

Nene Valley

news

Your local independent community newspaper for East Northamptonshire

Telephone:
01522 513515

We want to hear from you,
so please submit your
news story or event at
www.nenevalleynews.co.uk

Inside...



Pitsford School Sports Centre Grand Opening

Page 6



Diamonds Diary

Page 9

Chancery Lane given new lease of life

A much needed £3.7 million luxury retirement scheme has been officially opened in the centre of Thrapston.

Situated off Chancery Lane, the Castle Court scheme boasts 29 one and two-bedroom apartments that are designed for people in later life, with three available for shared ownership and the rest for outright ownership.

The scheme offers residents a hassle-free retirement as the external building maintenance and gardening is taken care of so they can make the most of their free time.

Built on the former site of a demolished care home, the

residents of Castle Court can enjoy easy access to the town centre and have a Scheme Manager on hand who can give advice and assistance whilst managing social activities, communal areas and maintaining the grounds.

Plans had been put in place to provide such a building after an Older Persons Survey completed in September 2010 by East Northamptonshire had highlighted growing

local need for older people's housing.

"Specialist retirement properties are like gold dust in East Northamptonshire, especially in Thrapston," said Cllr Marika Hillson, Chairman of East Northamptonshire Council. "We've seen rapidly growing demand for this kind of housing and are delighted to see Castle Court come to fruition."

The building uses traditional materials so that it fits into Thrapston's historic aesthetic. Whilst a traditional look and feel has been achieved, mod cons come as standard including wifi, CCTV and access to digital and cable television.

The specialist scheme has been built by Keystone Developments and Seagrave Developments in partnership with East Northamptonshire Council and Richard Julian Associates. Longhurst Group now manage the day-to-day running of Castle Court.

Ian Jackson, Executive Director of Portfolio Investment at Longhurst

Group said: "Our mission is to deliver high quality homes designed for life. We've drawn on the expertise across Longhurst Group and with our partners to make sure Castle Court's apartments really do offer luxury in retirement. We know that many people who are in retirement want to make the most of life and don't want to be tied down with looking after a building and gardens, so we provide a Scheme Manager to look after things and to provide assistance to residents if they need advice. On top of independent living in a prime location, having a Scheme Manager offers a huge benefit for residents as the hassle of maintaining a home is taken care of."

"Housing supply is crucial at the moment, which is why Longhurst Group has committed to building 2,500 homes across the midlands over the next five years. We're building houses of all shapes and sizes to meet the needs of local communities like in Peterborough and Northampton."



In Brief

New homes for local people at Islington

Are you or a family member interested in finding out more about renting, part owning or buying a property at the new development in Islington? Come along to a Drop-in Event on Thursday 12th May at the Titchmarsh Clubroom between 3.15pm and 6.45pm.

The rented homes and bungalows are specifically for people with a strong local connection to Titchmarsh. For more info contact Northamptonshire Rural Housing Association on 0300 1234 009.

Cashpoint raiders strike again

Cashpoint raiders struck again in Oundle in the early hours of 28th April. This time, though, they were unsuccessful.

It seems that the attempted theft from the machine at Waitrose was intended to be a more sophisticated means of relieving the machine of its cash than the agricultural methods used previously elsewhere in the town. Explosives were involved in this raid in the early hours of the morning causing a bang which was heard in Ashton. Police are pursuing a number of enquiries.

A new way of living...

The dream of owning your own home could be closer to reality than you think.

2, 3 & 4 bedroom homes available to purchase from just **£78,000**.

For more information call **01733 396406** or email sales@crosskeyshomes.co.uk

www.crosskeyshomes.co.uk/sharedownership

The Lodge, Herne Road, Oundle, PE8 4BS



Letters to the editor

If you would like to submit a letter to the editor please send it to news@nenevalleynews.co.uk for consideration. The maximum word count is 200 words.

Dear Editor,

I have been wondering why there are not Crafters' Markets to operate like Farmers' Markets do?

These would operate in the same way as Farmers' Markets but for local artists to connect directly with the public to sell their wares. There are many cottage industries beaver away in homes making cards, clothes, jewellery, mounting photographs and paintings, turning wood, sculpting and potting.

I am a wood carver with limited ways to sell my sculptures. I meet other stall holders

occasionally at the few and far between 'Craft Fairs'. They tell me they too have limited access to local selling venues and those that operate are too far away or charge costly stall fees.

Well I propose to get Crafters' Markets off the ground.

The definition, 'Crafters' Markets', is significant and distinct from 'Craft Markets' which are usually run indoors on middle management profit basis. Crafters' Markets would be outdoors and not for profit.

It is proposed that each stall holder must be selling handmade crafts. For example, handmade clothes, cards, jewellery, pottery, paintings, photographs and related items, wood turning, carving and sculpture.

The stallholders would need to erect their own stall with gazebo if necessary. The aim is to try to make the stalls free for the first three

months but when an established event is in place, a small charge (£5 or less) can be made for further advertising.

I have secured set-up permission in a car park area in the industrial compound opposite Lidl, outside the premises of 'Autopress Education', Brindley Close, Rushden, NN10 6EN and propose to start up on the first Sunday of the month, starting 1st May.

Who knows, it might take off all over the country in the same way that Farmers' Markets have.

Dear Editor,

Re: Oundle South Bridge

As you may be aware, a 3 tonne weight limit and width restriction has been placed on the structure since the water main leak in 2014. Anglian Water are currently on-site to divert the water main, removing it from the bridge, and we currently expect their work to be completed by 15th May 2016.

We will carry out further work very shortly after

this, which will require another closure of up to two weeks. During this second closure access will be maintained for pedestrian and cycle traffic, although the bridge will be closed to all vehicular traffic throughout this period. It is likely there will be a short period between the two closures when the bridge will re-open to traffic, subject to the current 3 tonne weight limit.

The structure has been assessed, which will allow us to increase the current capacity. As a result, an 18 tonne amenity weight limit will be introduced. During the second closure we will amend the signage accordingly and remove the bollards enforcing the width restriction, restoring the full working width of the carriageway. The carriageway will be resurfaced across the structure and the approaches to minimise any further need for maintenance work in the near future. We aim to mobilise as soon as possible after Anglian Water have completed their site works and we will be in operation for up to two weeks.

Northamptonshire County Council

Editor's notes

Publication of our first edition of May 2016 coincides with a few notable events on the same date but many years ago. The Penny Black stamp was introduced in 1840, and the Channel Tunnel was opened in 1994, two very different elements of improvements to communications.

The Penny Black is reputed to have been the world's first adhesive postage stamp used in a public postal system, although the idea had at least been suggested earlier in Austria, Sweden, and possibly Greece. Previously, British postal rates had been complicated and expensive with the recipient paying on delivery and being charged by the sheet and on distance travelled, whereas the Penny Black allowed letters of up to half an ounce (14g) to be delivered at a flat rate of one penny, regardless of distance.

Ideas for a tunnel or a bridge linking England and France were first mooted as far back as 1802, well before the Penny Black, but were confounded by concerns about the compromise of national security. There was a serious attempt to build a tunnel, starting in both England and France, in the late 19th century but after digging less than 2,000m on each side it was abandoned because of the same concerns about defence. Eventually, with the agreement of the British and French

governments and after considering a variety of options, Eurotunnel began construction in 1988 and opened in 1994. The 50.5km long tunnel has the longest undersea section of any in the world and is some 75m deep. However, the project was financially demanding and at £4.65 billion, came in 80% over its predicted budget.

So, the Penny Black, which was used for only a year or so before giving way to more secure alternatives, heralded a new era in postal systems and the Channel Tunnel, which has seen passenger numbers and freight volumes increase since it was built, has provided a speedy link to the continent. Nowadays, though, when electronic forms of communication offer such apparently attractive and swift alternatives, posting a letter is something of a novelty. Similarly, the Tunnel satisfies our appetites for being whisked off to destinations more quickly, and perhaps more comfortably, but ferry companies are still in business to provide a more leisurely and perhaps nostalgic means of crossing the Channel.

Finally, we can't let the exploits of our 'local' Premier League football team pass without note; congratulations to Leicester City on winning the League, particularly on such a comparatively small budget and by playing such attractive football.

Want to place an advertisement or submit an article?

If you wish to contribute or have any comments please email news@nenevalleynews.co.uk or call 01522 513515. To advertise, call 01522 513515. Alternatively you can email advertising@nenevalleynews.co.uk

If you are not receiving your copy of Nene Valley News, please email distribution@km-media.co.uk or telephone 01522 513515.

If you would like to receive this publication as a download, Nene Valley News is available online as a pdf at www.nenevalleynews.co.uk.

You can also subscribe to Nene Valley News for £39 per annum.

Nene Valley News is produced by KM Media & Marketing, County House, 9 Checkpoint Court, Sadler Road, Lincoln, LN6 3PW.

Copy dates for Nene Valley News

Publication date: Saturday 21st May
Articles to the editor by: Wednesday 11th May

Publication date: Saturday 4th June
Articles to the editor by: Wednesday 25th May

KM
KM Media & Marketing
Your partner in publishing
ONLINE | IN PRINT | IN DIGITAL

Rushden plans Queen's 90th party

Rushden Town Council is celebrating the Queen's 90th Birthday with a Garden Tea Party on Saturday 11th June in the Walled Garden of Rushden Hall Park.

Admission is FREE and the event will take place from 2pm until 5pm (Gates open at 1pm). During the afternoon there will be Live Entertainment from the Rushden Town Band, The Victory Dolls and music from local DJ Nathan. Activities during this family fun afternoon will include maypole dancing from pupils of Alfred Street Junior School,

a treasure hunt within the park along with Outdoor Games, and a Children's Fancy Dress Competition. Bring along your own picnic and enjoy a fun family day event.

If there is any resident of Rushden who will be celebrating their 90th birthday this year, the council would like to hear from them. Please call 01933 316216 or email info@rushdentowncouncil.gov.uk

For more information visit the website www.Rushdentowncouncil.gov.uk


Rushden Golf Club

Something for everyone at
Rushden Golf Club
One month's trial membership for £65
Membership from £56.88 per month
Pay and play on Monday, Wednesday or Friday
morning for £18.00 per person including a bar meal.

Not a Golfer?
Looking for somewhere new to eat at lunchtime?
With its pleasant surrounds and easy parking, why not
enjoy a meal at Rushden Golf Club.

Our 2 for £10 or 2 for £12
menus cover a range of popular meals.

Sunday lunch available -
£7.95 per person - alternate Sundays.

Rushden Golf Club, Kimbolton Road,
Chelveston, Wellingborough, Northants, NN9 6AN
01933 418511 • www.rushdengolfclub.org

The Foot Clinic
at
Images


128 Newton Road
Rushden
Northants

Rose Wesley
MCFHP MAFHP

All aspects of foot healthcare including:

- Nail Cutting
- Corn Removal
- Ingrowing Toenails
- Hard Skin Removal
- Fungal Nail Treatment
- Verruca Treatment

Open
Wednesday
to Saturday

07854 514323
01933 318902

46 Cartrill Street, Raunds, NN9 6ER


RAUNDS RAINBOW NURSERY SCHOOL

Free 15 hours or 11 hours per week

Free Entitlement:
Aged 2+
11 hrs 52 weeks
15 hrs 38 weeks



Worth over £2000 per year
Reserve your place for next term

01933 624500
www.raunds.org

Come & visit us • Open 8 till 6 • Children from 2 years

RUSHDEN TOWN BOWLING CLUB



OPEN DAY
SUNDAY 5TH JUNE
10.00am to 4.00pm
144 Northampton Road,
Rushden NN10 6AN
01933 312680

New look Oundle CE Primary School building project progresses

Building work to improve and reconfigure Oundle Church of England Primary School's Cotterstock Road site is right on schedule to be ready in time for the start of the 2016 autumn term.

"We are absolutely delighted with the way the project is going," said the school's Headteacher, Mrs Janet McMurdo. "Our building contractors Jenkins Weir are doing a brilliant job to complete a task to the highest possible standards."

About 20 per cent of the work has now been completed with some of the pupils already making use of parts of the converted building. The Year 3s, 4s and one class of Year 5s are temporarily occupying the new space which, from September, will become the home of the Year 6s.

The refurbishment work is being carried out in a

special way, whereby the workmen complete different sections of the building while the school community continues to operate as normal in other areas of the site. New fencing and playground areas have already been finished.

From September, Reception class children as well as Year 1s and 2s will transfer to the new-look school from its other site at Milton Road.

"This project keeps us at the cutting edge of primary education in the local area. We will be so glad when the whole school family is in one location," said Mrs McMurdo. "Everyone associated with our school is being so supportive and are looking forward

to the completion of this exciting phase in the school's history."

The school is celebrating,

following an 'Outstanding' grade awarded to them by church inspectors earlier this year.



Parents and carers are warmly invited to visit on any school day during term-time by making an appointment on 01832 272392. This invitation is especially aimed at those who wish their children to join the school family from September 2016.

Scouts to sleep out

The 1st Higham Ferrers Scout Group will tonight be sleeping out, without shelter, in the grounds of Chichele College, Higham Ferrers in order to raise funds for Shelterbox.

Shelterbox provides emergency shelter and vital supplies to support communities around the world overwhelmed by disaster and humanitarian crisis.

Our Scout group will be hiking from Stanwick Lakes with their sleeping bags, arriving at Chichele College Gardens in the evening to set up their base for the night.

As a group, we have been working to raise awareness of disaster relief and our young people want to work to raise enough funds to buy at least one Shelterbox. A box holds emergency supplies, from a tent and essential cooking equipment to books and pencils for children.

We are raising funds by asking local businesses and individuals to support us by contributing to our Just Giving page. Many local businesses in Higham Ferrers have shown their support in the form of donations or supplies for the sleepout. We are proud to be supported by Higham Tourism, English Heritage and local businesses in this fundraising event.

Anyone who would like to support our cause can donate by visiting our Just Giving page www.justgiving.com/1stHighamFerrersScouts

If you would like to contact 1st Higham Scouts regarding the sleepout or you are able to support us in any way please contact Martin Scudder (Group Scout Leader) at highamgs1@gmail.com

For more information on the work of Shelterbox, please take a look at their website: www.shelterbox.org

FOR THE LARGEST SELECTION OF SHOES IN YOUR AREA
why not visit your local

DB Factory SHOE SHOP

We stock Men's and Ladies' boots, shoes and slippers, as well as Children's styles including football boots and wellies!

Brands include: **Marco Tozzi, Skechers,**

Heavenly Feet, Earth Spirit, Dr Keller, Natureform and Dr Martens

Opening times: Monday to Saturday 10am-5pm Sunday 10am-4pm

Address: DB Shoes Ltd, 19-21 Irchester Road, Rushden, Northants, NN10 9XF

www.dbfactoryshop.co.uk

WIDE FEET?

Then why not VISIT OUR
SPECIALIST SHOE FITTING CENTRE

where our team of experienced shoe fitters will help you choose the style of footwear that is suitable for your needs!

Telephone: **01933 410 305**

Opening times: Monday to Saturday 10am-4pm

www.widerfitshoes.co.uk

Plus get an additional

10% OFF
(excluding sale items)

when you bring this advert and quote code NVX1602F.
Offer valid in both shops until 15th June 2016

Corby Outdoors Festival

It's not just about walking!

30 May – 5 June



The Corby Outdoors Festival starts with a free Family Fun Day on Monday 30 May, 12noon to 4pm at East Carlton Country Park. Join in the family fun with archery, bouncy castles, face painting, falconry and much more!

The Corby Walking Festival now in its 8th year and now with a new look continues to offer a diverse range of walking activities, which will include local history and evening walks.

For regular updates and a copy of the programme visit the website www.corbywalkingfestival.org.uk or contact Suzanne Preston, Rural Pride Officer on 01536 463177 or email Suzanne.preston@corby.gov.uk

THRAPSTON TANDOORI

27th anniversary
SPECIAL OFFERS

For a limited period

1/2 price meals
(7 days a week) *Sit in only.*

20% discount on collection orders

Free delivery on take-aways

Normal opening hours

Sunday – Thursday 5.30 to 11.00

Friday and Saturday 5.30 to 11.30

13 Bridge Street, Thrapston,
Kettering (next to Thrapston
garage, opposite the Bridge Hotel)
Telephone: 01832 732356/734698
www.thrapston-tandoori.co.uk

FOOD HYGIENING RATING

0 1 2 3 4 5

Very Good



New Customers Only!
Sign up today to receive

10% off

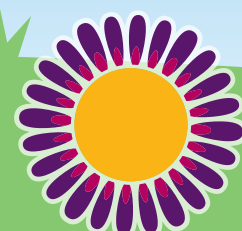
your annual subscription
using code GWC16E

Garden Waste? Let us recycle it for you

- Convenient kerbside collections
- Monthly payment options available
- Saves on trips to the local tip

This offer is not available to customers paying by monthly direct debit. Offer valid until 30/06/16.

**green
waste
club**



greenwasteclub.co.uk

0800 0858 286

Spotlight on weddings

The Bridge Hotel Wedding Open Evening Thursday 16th June 6-9pm

Join us for Bucks Fizz and canapés and see every function room set out for weddings, plus see our Bridal Suite.

The Bridge Hotel is based in the market town of Thrapston, Northamptonshire and has a wonderful mix of old and new, with old oak beams and period furniture combined with modern facilities to create a perfect venue for your special day. We are licensed to hold civil ceremonies and partnerships in our stunning ceremony room which will take your breath away and create the perfect romantic mood. We can cater for up to 100 guests for a sit down meal in our Rothwell Suite and up

to 150 guests for the evening reception with a private bar within the room. For a more intimate reception we have the Latimer Suite which can cater for up to 60 for a sit down meal and up to 100 in the evening.

Whether it's a Civil Ceremony in our beautiful ceremony room or a Church wedding with a reception at the hotel, you are assured that your special day is in experienced hands. The wedding coordinator and dedicated team will lead you through the whole process from the initial meeting, planning and through to the big day itself.

The Limelights Suite @ The Snooks

Situated upstairs in the Snooks Bar &

Restaurant on West Street, Raunds, is our luxurious and highly customisable Limelights Suite, an ideal setting for weddings, christenings, birthdays or any special occasion.

The Limelights Suite is dressed in an elegant marquee style and behind the drapes are LED backlights which can be changed to virtually any colour to perfectly suit the theme of your event. The bar area is also LED backlit and these can be tailored to your taste as well, to create the perfect ambience for your special day. We cater for formal elegant events and we offer use of our traditional round tables which can be dressed to suit the occasion and colour coordinates.

We are also able to supply food ranging from just a simple buffet to a full blown three course meal with a range of differing prices to suit your budget.

For any more information and to see our photo gallery, please visit our website www.thesnooks.co.uk/room-hire or if you have any enquiries please contact us on 01933 626437 and we'll be happy to hear from you.

Colemans

If you are planning a wedding this summer, then look no further than Coleman's Craft Warehouse for everything you need to make beautiful and unique wedding stationery.

From top quality cards and envelopes to exquisite embellishments, from ribbons and bows to jewels and crystals, Coleman's Craft Warehouse can supply all you need in your chosen colour scheme and theme for wedding invitations, orders of service, place cards and favour boxes.

There is also a comprehensive fabric and décor section so you can indulge your vintage chic ideas for gorgeous bunting, table decorations and unusual little extras and turn them into reality – all at very reasonable prices!

They are open on Thursdays, Fridays and Saturdays 8.30am-4pm and Sundays from 10am-4pm and always have plenty of helpful and knowledgeable staff on hand to give you individual advice and guidance on your chosen project. So come and browse at leisure in their welcoming surroundings. There is always a cup of tea or coffee on offer so you can plan this part of your Big Day in a relaxing and creative environment. Not to be missed!

Wedding Open Evening at THE BRIDGE HOTEL

Thursday 16th June, 6-9pm

- All function rooms set out for you to view
- See our Bridal Suite
- Bucks Fizz and canapés

For more information please call Helen on 01832 732128.
info@thebridge-hotel.com
www.thebridge-hotel.com



The Snooks
Wedding & Party Venue

Wedding & Party Venue

Introducing our superb Limelight Suite with fully customisable mood lighting system.

See our website and Facebook for more details and for Saturday night events.

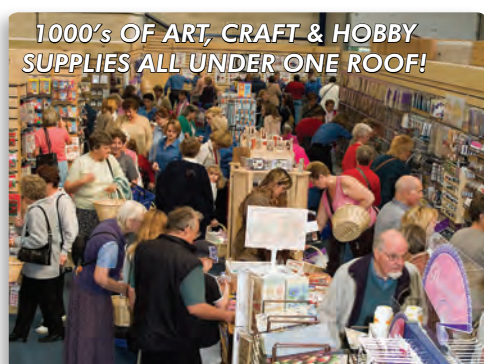
01933 626437
www.thesnooks.co.uk

The Snooks, The Old Cinema, West Street, Raunds, Northamptonshire NN9 6HR

Colemans
Craft
Warehouse

www.colemans-online.co.uk

Unit 6, Brindley Close,
Rushden, NN10 6EN.
T: 01933 355530



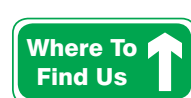
1000's OF ART, CRAFT & HOBBY
SUPPLIES ALL UNDER ONE ROOF!

FREE DEMONSTRATIONS!

SAVE 20%!

Off non-offer items

FREE PARKING



**Unit 6 Brindley Close
Rushden
Northants
NN10 6EN**

T: 01933 355530

E: craft@colemangroup.co.uk
www.colemans-online.co.uk

Please Note: the Craft Warehouse only opens for our Special Events, Craft Workshops & published Shopping Days.



1000's OF CRAFT & HOBBY SUPPLIES - ALL AT GREAT PRICES & ALL UNDER ONE ROOF!

At Rushden, Northants our 5000 sq. foot warehouse has 1000's of craft, card making, beading, fabric, fabric, wedding & haberdashery supplies - **all at great prices!**

On the **first Saturday of each month** we hold one of our famous **Big Craft Days**. We have simultaneous craft demonstrations by professional demonstrators which are continuous between 10.00am and 4.00pm. There are lots of **special offers** and **free refreshments**. We have plenty of helpful and knowledgeable staff on hand to give you advice on all the latest products. We open for shopping at 8.30am.

Are You Planning A Wedding This Summer?

If you or yours have a "Big Day" on the horizon make sure you visit us!

If you love the look of hand-crafted wedding stationery, but not the cost, we can help you make your own & achieve stunning, professional results at affordable prices.

Choose from our large range of cards blanks, envelopes and exquisite embellishments, from ribbons & bows to jewels & crystals, we can supply all you need in your chosen colour scheme and theme for invitations, orders of service, place cards and favour boxes.

We also offer a comprehensive fabric and décor section so you can indulge your vintage chic ideas for gorgeous bunting, table decorations and unusual little extras and turn them into reality – all at very reasonable prices!

We are open on Thursdays, Fridays and Saturdays 9.00 – 4.00 and Sundays from 10.00 – 4.00 and always have plenty of helpful and knowledgeable staff on hand to give you advice and guidance on your chosen project. So come and browse at leisure in our welcoming surroundings. There is always a cup of tea or coffee on offer so you can plan this part of your Big Day in a relaxing and creative environment!

Expanded Wedding Product Range

After many customer requests we have expanded our range of Wedding products & accessories. We now stock bridal posies, ring cushions, guest books, cup cake boxes, table sprinkles, confetti & much, much more!



Delicious homemade tomato sauce

Here's an everyday tomato sauce which tastes great, makes multiple meals and you can be sure of what's in each mouthful – no labels or health warnings required!

Ingredients:

- 1 medium onion
- 2 cloves garlic
- Knob of butter
- 2 x 400g tins of tomatoes
- Anchovy fillet (you won't taste it in finished sauce but it adds a depth of flavour)
- Couple of handfuls of mixed veg, all chopped quite small e.g. mushrooms, pepper, courgette, celery, olives, fresh tomato
- Teaspoon Marmite or bouillon powder
- Soy or Worcestershire sauce to taste
- Salt and pepper

By Catherine Burbage



Herbs - fresh basil or dried mixed herbs
Chilli if you like
Peel and chop an onion and garlic, then gently cook in the butter until soft. Add the tins of tomatoes, mixed vegetables, Marmite, anchovy, and any other seasonings. Bring to the boil then simmer for around 20-30 minutes until the vegetables are tender and the mixture is

reduced to about half its original volume. Season to taste.

Liquidise for a smoother sauce, add a tablespoon or two of cream cheese for a richer sauce, or reduce by about half again to make a thick sauce to top pizza. Tastes good hot or cold, microwaves and freezes perfectly. Just like mama (and papa!) can still make...

For news and views on food and eating, follow me on Twitter @nenevalleyfood

Swivel Club donates funds

The Swivel Club charity have recently provided funds for local individuals and good causes within our locality.

College Street Community Centre in Irthlingborough is one of the recipients of the Club's support. The centre provides Day Care facilities and are open on weekdays. The Centre is not funded by any authority and the volunteers work hard to get funds together, hence a request from them to The Swivel Club to help to buy new window blinds.

One community member, Irene Pugh of Irthlingborough, said: "Our old blinds weren't much good; they were bright orange and broken. These are very nice and much more pleasing to the eye and keep the sun out. We are all very happy with them, thanks to the Swivel Club's generosity."

The Manager, Janice Childs MBE, said: "There has been a community centre here for about 38 years and some of our members



have been coming here for many years. There are members now who used to be volunteers themselves. It is a long-term commitment with an army of volunteers and a lot of support from members of our community.

"There are no Local Authority Day Centres in our vicinity, so what we provide is essential to give Carers a break and also to get older people to socialise. We are very grateful to the Swivel Club for this donation, many thanks."

Protection sought for Fineshade

The Friends of Fineshade Wood have appealed to Natural England for protection for the entire woodland complex.

In an open letter, details of which are on their website at <http://www.fineshade.org.uk>, the Friends have asked for urgent designation of the area as a Site of Special Scientific Interest (SSSI). The trigger for this action was the initiation by Forest Holdings of yet another attempt to persuade local Councillors to support an application to develop a large holiday village of some 70 cabins in the wood.

Forest Holding's last application was

unanimously rejected by East Northants Councillors after they listened to hundreds of mostly local objectors supported by national conservation organisations and individuals across the country.

The Friends' letter to Natural England was co-signed by leading conservation groups including the RSPB and the local Wildlife Trust, by expert county wildlife recorders, by individual ecologists of national repute, by the local Parish Council and by former Forestry Commission employees who know Fineshade well; all agree that Fineshade Wood is a special place for wildlife which needs statutory protection.

East Northants Tennis report

For the first time in Men's Division One, Kettering can boast three teams in the top flight, so inter-club matches were the order of the day.

Kettering A were in fine form in their opening two clashes as they look to regain the title they so narrowly lost to Corby A last term. Phil Smith / Jordan Parker together with Chris Todd / Graham Pigott overwhelmed the C team dropping only seven games all evening. The same foursome then turned their attention to the B team. Smith / Parker encountered few problems in gaining a maximum but Todd / Pigott could feel a little fortunate in edging out Jon Burrows / Adam Brown in a second set tie-break while Niki Helbick / Jamie Hills gained some reward halving 1-6, 6-2 with

the same duo.

Kettering C then entertained the B team and it was the latter who flourished on the Northampton Road courts. Burrows / Brown beat Dermot Bailey / Josh Crawford 6-0, 6-1 and Matty Hutchinson / Andy Bland 6-1, 6-3. Wayne Tideswell / Chris Adams also produced similar scorelines beating Bailey / Crawford 6-0, 6-1 and Hutchinson / Bland 6-2, 6-2.

The league was saddened to learn of the death of Sandy Letman. Sandy was a well liked and familiar figure on the East Northants circuit playing regularly for Burton Latimer in the Ladies and Mixed divisions. She was also club secretary at Burton for many years. Our condolences go out to all her family and friends at this time.

Legion celebrates longevity

The Royal British Legion, Oundle Women's Section, recently celebrated a double anniversary: the Branch was formed 73 years ago and the current Secretary, Mrs Ruth Keens, has been a member for the past 70 years.

The celebration took the form of a lunch at the Red Lion in Warmington, attended by a dozen members including the Branch President, Lady Brassey, and the County Secretary, Mrs Mary Coleman; the Chairman, Mrs Eileen Broadbent, gave

the welcome address and Mrs Keens also spoke. After lunch coffee was served together with cake, made by Mrs Margaret Sauntson, which was decorated with icing commemorating the two noteworthy dates being celebrated.

Mrs Keen, who is a well-known figure around Oundle particularly at fundraising events for the British Legion, has held every office in the Branch but will retire in September this year; we take this opportunity to wish her a happy retirement.

Discover LINCOLNSHIRE

A top destination to visit in 2016

Lincolnshire is a hidden gem waiting to be discovered by you, your family and friends.

Order your copy of Discover Lincolnshire through our website www.discoverlincs.co.uk or call our offices on 01522 513515

• Window sashes • Door frames •

THRAPSTON GLAZING & JOINERY WORKSHOP

Est 85

FREE QUOTES
FREE GENUINE ADVICE

MANUFACTURERS OF HIGH QUALITY TRADITIONAL WINDOWS, DOORS & CONSERVATORIES IN HARDWOODS & SOFTWOODS

Manufacturers of replica windows, doors & mouldings for the older properties & houses of character.

WINDOWS • DOORS CONSERVATORIES UPVC and ALUMINIUM GLASS CUT TO SIZE WHILE YOU WAIT

We have been repairing customers existing windows and doors for over 15 years and this has become more and more popular, we now offer a dedicated, quality repair service with 1000s of spare parts for all makes of windows and doors, including, locks, hinges, handles, glass units, etc.

SAME INSTALLATION TEAM FOR LAST 25 YEARS.

All of this from a small local company offering a combined wealth of experience of over 150 years from our small workforce of six skilled craftsmen in the joinery, wood, aluminium & UPVC window and door industry.

UNIT 11, COTTINGHAM WAY, THRAPSTON
01832 734570 **FENSA**
www.thrapstonwindowsanddoors.co.uk
• Window sashes • Door frames •

Locks • Hinges • Sliding box sash windows • Doors • Hardwood Patios • Burglary repairs • Mouldings • Composite doors



East Northamptonshire Council

Notice of planning applications received

Notice is given that the following applications have been received together with the last date for making representations:

Aldwincle

16/00727/FUL (21/05/2016) (Info) Conversion and extension of garage to create detached dwelling with integral double garage at 110 Main Street Aldwincle NN14 3EP

Ashton

16/00660/FUL (21/05/2016) (Info) To raise the garden fence to 1.7m high to boundary edge adjacent to highway at 9 Laxton Drive Oundle PE8 5TW

16/00680/FUL and 16/00681/LBC (28/05/2016) (LB/CA) (LBRegs) Kitchen extension with outbuilding conversion and link back to rear extension. partial basement at Green Farm 21 The Green Ashton PE8 5LD

16/00718/FUL (28/05/2016) (LB/CA) Re-location of oil tank at Pantile Building The Green Ashton

16/00719/FUL (28/05/2016) (LB/CA) Re-location of oil tank at Chapel Farmhouse The Green Ashton Peterborough

16/00721/FUL (28/05/2016) (LB/CA) Relocation of oil tank at Chapel Manor The Green Ashton PE8 5LD

Brigstock

16/00654/OUT (28/05/2016) (Art8) Outline planning permission for up to 110 residential dwellings (include affordable housing) with all matters reserved, save for the main site access. Introduction of structural planting and landscaping, informal public open space and children's play area, surface water flood mitigation and attenuation, vehicular access point from Benefield Road and associated ancillary works at Land Off Benefield Road And Old Dry Lane Brigstock

16/00751/FUL (21/05/2016) (Info) Porch to front elevation, brickwork cladding to front, side and rear elevations, single storey rear extension to replace existing conservatory at 60 Lyveden Road Brigstock

Clopton

16/00725/VAR (21/05/2016) (Info) Variation of condition 2 to allow re-siting of dwelling and alterations to elevations pursuant to 15/01344/ FUL: Erection of two storey dwelling with garage and access alterations dated 26.10.16 to allow re-positioning for the dwelling further back at Navisford House 14 - 15 Main Street Clopton

Deene

15/00119/VAR (28/05/2016) (Art8) Variation of condition 4 to substitute approved Development Framework Plan (ref. BBD001/ DFD/01 Rev C) with drawing ref. BBD036-005 Rev T pursuant to application 04/01326/OUT: 'Mixed use: Urban extension to Corby, including residential (up to 5,100 units), Employment (up to 14ha, 1 District Centre, 2 neighbourhood centres, Schools (1 Secondary, 3 Primary), Hotel, Formal and Informal Open Space, together with changes to the operating regime at Rockingham Motor Speedway, at Priors Hall Site, Kirkby Lane, Deene, Corby', dated 10.02.2012 - Amended plan and Environmental Statement received at Priors Hall Site Kirby Lane Deene

Denford

16/00759/FUL (21/05/2016) (Info) Two new dwellings and a detached garage on land at Hill House Chapel Lane Denford NN14 4EA

Hargrave

16/00778/FUL (21/05/2016) (Info) Erection of a single storey oak framed garden room at Woodlands Church Road Hargrave NN9 6BQ

Higham Ferrers

16/00777/FUL (21/05/2016) (Info) Single storey rear extension at 34 Lancaster Street Higham Ferrers NN10 8HY

Irthlingborough

15/02198/OUT (28/05/2016) (Art8) Outline: Demolition of existing football stadium and associated infrastructure and erection of new retail and leisure development including retail (A1), cinema (D2), hotel (C1), restaurants (A3/ A5) and new community football facility along with access and parking (All matters reserved except access) (Re-submission of 14/02310/ OUT) (see also 15/02199/OUT) (application accompanied by amended Environmental Statement – EIA) at Nene Park Station Road Irthlingborough

16/00753/FUL (21/05/2016) (Info) Side first floor extension and rear two storey extension at 35 Randall Close Irthlingborough NN9 5HE

Kings Cliffe

16/00741/FUL (21/05/2016) (Info) Application of 90mm Envirowall Lambdatherm EPS insulation to the exterior of the dwelling. Finishes to match existing at 5 Blatherwycke Road Kings Cliffe

Lowick And Slipton

16/00784/FUL and 16/00786/LBC (28/05/2016) (LB/CA) (LBRegs) Erection of two storey side extension, waste storage area and provision of two extra parking spaces at Lowick Mill House 11 Mill Lane Lowick NN14 3BQ

Nassington

16/00656/FUL (21/05/2016) (Info) Erection of new industrial unit and associated offices, staff and visitor parking with services yard at Land South Of Unit 5 Kings Cliffe Industrial Estate Wansford Road Kings Cliffe

16/00678/FUL (28/05/2016) (Art8) Change of use from agricultural to paddock land at TL06477 95902 Church Street Nassington

16/00738/FUL (21/05/2016) (Info) Single storey rear sun room extension with chimney for log burner to the west elevation at 11 Church Street Nassington PE8 6QG

Oundle

16/00679/FUL (21/05/2016) (Info) Proposed bedroom extension at first floor over garage at 8 St Peters Road Oundle PE8 4NS

16/00709/FUL (28/05/2016) (LB/CA) Installation of 2no. rooflights, replacement of Juliet balcony and erection of timber fence at 78 South Road Oundle PE8 4BP

16/00720/LBC (28/05/2016) (LBRegs) Replace window frames and glazing to staircase turret at ground, first and second floor level at 4 Mill Road Oundle Peterborough PE8 4BW

16/00755/FUL (28/05/2016) (LB/CA) (Art8) Oundle Church of England Primary School Hybrid Planning Application comprising: Full application for the retention and conversion of original school building to form five townhouses and a studio apartment. Outline: Application for the demolition of school buildings and erection of six apartments and four mews cottages. at Oundle Church Of England Primary School Milton Road Oundle

Raunds

16/00723/FUL (21/05/2016) (Info) Two storey side extension - re-submission of 15/02253/FUL at 7 Windmill Avenue Raunds NN9 6JX

16/00761/FUL (21/05/2016) (Info) Two storey rear extension at 29 Nichols Way Raunds NN9 6SB

Ringstead

16/00739/FUL (21/05/2016) (Info) Application of 90mm SPS Envirowall Lambdatherm EPS Insulation to the exterior of the dwelling.Finishes to match existing at 30 Back Lane Ringstead NN14 4DR

16/00740/FUL (21/05/2016) (Info) Application of 90mm SPS Envirowall Lambdatherm EPS insulation to the exterior of the dwelling.Finishes to match existing at 35 Back Lane Ringstead NN14 4DR

Rushden

16/00488/FUL (28/05/2016) (LB/CA) First floor extension to provide a mezzanine floor for the storage of tyres at Orbit Tyre Co Skinners, Hill Rushden NN10 9YE

16/00737/FUL (21/05/2016) (Info) Demolition of existing garage and single storey side extension at 4 Drayton Close Rushden NN10 9HY

16/00758/FUL (21/05/2016) (Info) Change of use from sui generis to combined use class of A1/A4 at Rushden Delivery Office College Street Rushden NN10 0NW

16/00779/FUL (28/05/2016) (LB/CA) Single and second storey rear extension at 61 Higham Road Rushden NN10

16/00780/FUL (21/05/2016) (Info) Demolition of existing garage and construction of archway with ancillary accommodation above. at 127 Queen Street Rushden NN10 0AY

16/00803/ADV (21/05/2016) (Info) Four pole mounted vertical flag banners at DIY Store Crown Way Rushden NN10

Thrapston

16/00562/VAR (21/05/2016) (Info) Variation of condition 32 - approved plans - pursuant to application 13/02185/FUL - Proposed development of 4 detached properties and associated external works (Re-submission of 13/00858/FUL rec 20/5/2013) at Land South Of Mill Marina Midland Road Thrapston

Titchmarsh

16/00774/FUL and 16/00775/LBC (28/05/2016) (LB/CA) (LBRegs) Erection of a two storey rear extension at 13 High Street Titchmarsh

Warmington

16/00744/FUL (21/05/2016) (Info) Single storey rear extension and new pitched roof over existing flat roof conservatory at 4 Drapers Close Warmington PE8 6UQ

16/00750/FUL (21/05/2016) (Info) Bedroom, en-suite and conservatory extension at 16 Buntings Lane Warmington

Woodford

16/00742/FUL (21/05/2016) (Info) Application of 90mm Envirowall Lambdatherm EPS insulation to the exterior of the dwelling. Finishes to match existing at 16 Mill Road Woodford NN14 4HH

Woodnewton

16/00722/FUL (21/05/2016) (Info) Convert an existing double garage to a habitable room (children's playroom / lounge) at 2 Pridmore Close Woodnewton PE8

The reason for applications being advertised is as follows:

Part3 - Town and Country Planning (General Development Procedure) Order 2015.

Part16 - Town and Country Planning (General Development Procedure) Order 2015.

Info - Non-statutory - included for information only.

LB/CA - Planning (Listed Buildings and Conservation Areas Act 1990.

LBRegs - Planning (Listed Buildings and Conservation Areas) Regulations 1990.

Paul Bland, Head Of Planning Services

Dated 7 May 2016

Significant applications

All "significant" applications are highlighted in green. These are defined in the 2006 Statement of Community Involvement as those for:

- 100 dwellings and over
- residential development of 3ha or over if number of dwellings not known
- 1000 square metres of floor space or over
- commercial/industrial development of 1ha or over if floor area not known
- would, in the council's opinion, alter the overall character of the locality by means of scale, use or visual appearance
- would, in the council's opinion, be sensitive due to substantial demolition in a conservation area
- would, in the council's opinion, be sensitive due to development next to a listed building

For more information on "significant" planning applications, visit www.east-northamptonshire.gov.uk/dcnotification

Consultation deadlines will differ for each application. Please go to www.east-northamptonshire.gov.uk/planningapplications for details.

Olympic medallist unveils Pitsford School’s new sports centre

Pitsford School's brand new £2 million Sports Centre was officially opened by Colin Jackson CBE on Friday 29th April. The School also held a 24-hour inter-house cyclothon in the Sports Centre between 28th and 29th April.

Colin Jackson is an Olympic Silver Medalist, double World Champion, World Record Holder, 110-metre hurdler and star of Strictly Come Dancing!

He told the school: "It is absolutely fabulous to join you today and I am very pleased as a former international sportsman to see Pitsford School's new sporting facilities.

"The key thing about being a role model is helping make the dream happen by being motivated. I looked after Usain Bolt when he was 15 years old and he asked me what it was like to be a champion. I thought about what inspired me every day to be the best I could be. It is important to learn from your mistakes; not everything you do is perfect. When I was trying to win an Olympic Gold Medal, the qualifying round was easy and

so I didn't bother warming up for the next round. As I hadn't prepared, I got injured and although I got through to the final, I finished in seventh place. It was important to learn from that and ask why it happened.

"Preparation for anything you do in life is key. Remember to prepare well and deliver what you are capable of. Make good use of role models around you and ask them what got them to the top of their game. Many of you will be fantastic at whatever it is that you set your heart and mind to. Be the best that you can be and enjoy what you do; that is the most important thing."

Large enough to hold four full-sized badminton courts, plus a fully-equipped cardiovascular fitness suite, café area and changing facilities, the Sports Centre offers a wide choice of sports facilities including volleyball, badminton and 5-a-side football together with panoramic views across the School's 26 acres of parkland and sports fields.

Ranger Cadets explore the great outdoors

Ranger Cadets and leaders had a great day at Irchester Country Park on Sunday 24th April when they took part in a navigation exercise. Cadets and leaders walked the Ironstone Trail using compasses and maps and afterwards explored the woods and visited the dinosaur play area.

Mrs Eileen Mander, one of the group's leaders, commented: "This is the first trip we have arranged since the unit's formation last October and the day went well and we are now looking forward to a return visit in June. We are proud of our Cadets as they are new to navigation."

The Ranger Cadets formed its first unit at Crow Hill Community Centre, Fettleline Road, Irthlingborough in October 2015 and offers younger children as well as teenagers, the opportunity to become involved in adventure training and sporting activities. Membership is open to 8-13 year olds, as Junior Cadets, and 14-18 year olds.

Waterloo Contingent meets at Crow Hill Community Centre each Thursday evening 6.30pm–8.30pm. Activities include sports

and games, waterborne activities, camp-craft, ceremonial, Signals training (radios), weekend camps and musical activities with the marching band.

Information about joining or becoming an adult leader is available from: Telephone: 01933 412099, email: rangercadetsnorthants@gmail.com

Outdoor film events to return this summer

Steven Spielberg's thrilling blockbuster Jaws (12A) heads the return of open-air screenings at Stanwick Lakes, part of this summer's expansion of locations within the county for the popular LUNA FLIX Outdoor Cinema.

Organiser, Simon Hopkins said: "I'm delighted the idea has

caught on so well! Last year, local audiences sold out most of our classic movie shows so it's great to be at new sites, partnering with Kettering's Boughton House, Wellingborough School, Oundle and East Carlton Park as well as screening our main season again at Stanwick Lakes."

All of the summer's titles

are now open for online booking at www.lunaflix.co.uk, with screenings beginning from Friday 27th May at Stanwick Lakes.

First up is Spielberg's 70's thriller Jaws (12A), followed by the latest Star Wars blockbuster The Force Awakens (12A) and the ever-popular Abba musical 'Mamma Mia!' (PG). Due to the recent

tragic death of pop star Prince, a tribute screening of his smash-hit movie, 'Purple Rain' will play on Saturday 11th June.

Purchase tickets online only (see booking for prices at each location) with free parking included at all shows. Note: The

screenings each have limited attendance so book early to avoid disappointment: www.lunaflix.co.uk

Women's tennis league report

Early season matches in the Ladies Division of the East Northants Tennis took place recently and it was newcomers Corby C who began the campaign with a difficult match against defending champions Corby A, and despite several hard fought sets the A team always looked in control and Deborah Briggs / Juliet Croucher along with Karyn Slatter / Sam Chapman all secured maximum wins.

Market Harborough have always had a strong Ladies section, as shown last season when they fielded 17 different players over their eight matches. Adopting the same policy in their opening two fixtures this term brought them mixed fortunes.

A visit to Thrapston saw the home side in excellent form, winning 7-1. Lizzie Sloan / Rachel Wildman raced to

a clean sweep defeating Jane Cotterill / Liz Rothero 6-3, 6-0 and Julie Hunt / Chris Smith 6-4, 6-3. Vanessa Woodhead / Hillary Baseley also beat Hunt / Smith but had to settle for a 4-6, 6-3 half with Cotterill / Rothero.

Playing hosts to Corby A in their next match Harborough deployed a much stronger quartet and almost inflicted a rare defeat on the Corby team. The visitors started the better to lead 3-1 at the halfway point, with Slatter / Chapman beating Sarah Parr / Jacky Deans 6-0, 6-4 and Briggs / Susie Archer halving 6-4, 4-6 against Katie Gillanders / Christine Richardson. But the home side fought back as Parr / Deans produced a quality performance to beat Briggs / Archer 6-3, 6-3 while Gillanders / Richardson gained a 6-3, 1-6 half against Slatter / Chapman to leave matters all square at 4-4.

Voluntary service recognised

Congratulations to Flight Sergeant (ATC) Dominic Chisholm who has been awarded the Lord Lieutenant's Certificate for Meritorious Service.

This is in recognition of his long commitment to voluntary service within the Air Training Corps and young people within the county and wider areas and especially his involvement within Wing level training teams.

Dominic, from Rushden, joined the Air Training Corps back in 2000 at the age of 13. He joined 1101 (Kettering) Squadron and progressed through his cadet career gaining his Staff Cadet qualification, Gold Duke of Edinburgh, both flying and gliding scholarships. Progressing through the ranks and reaching Cadet Warrant Officer, Dominic went to University in Liverpool and joined 7F (1st City of Liverpool) Squadron.

Whilst at University, Dominic furthered his skills and qualifications and gained his Weapons Instructor and Weapons Handling Test Conductor qualifications. Reaching the age of 20, Dominic continued his service as a civilian instructor at 7F and once he graduated from University, he returned home to

Northamptonshire and rejoined 1101.

Dominic was promoted to Sergeant (ATC) in 2009 after successfully passing the Pre-Uniform Course with South and East Midlands Wing. Once appointed he moved to his current unit of 858 (Rushden) Squadron and has remained there since.

Dominic's role at Rushden has developed over the years as he has gained more qualifications. He is responsible for the Weapons training, First Aid, Shooting, Drill, Discipline and Ceremonial. He has helped many cadets that have attended 858 gain qualifications in all of the above.

Along with his high commitment to his unit, Dominic has also been a key member of South and East Midlands Wing's Cadet Development Team. Within the team he was tasked with providing a variety of training courses for the cadets within the Wing, notably the Initial NCO Course. Dominic assumed the role of the Principal Drill Instructor for the Initial NCO Course, delivering the Drill, Dress and Discipline aspects of the course.

The level of commitment that Dominic has and continues to show for his unit, the Wing and the wider Corps is why he has been duly awarded the Lord Lieutenant's Certificate for Meritorious Service.



A service provided throughout Northamptonshire by:



Approaching retirement?

Not sure what to do?

Talk to us about Pension Wise - a free and impartial government service providing guidance and information on the new pension freedoms.

For a local appointment call: 0300 323 9940



RB Travel
01536 791066

May

Wed 18 Oxford
Sat 21 Skegness
Sun 22 Camden Market
Sat 28 London Museums
Sat 28 London Free Time
Sun 29 Hunstanton
Mon 30 Bakewell Market
Mon 30 St Ives Bank Holiday Market
Tue 31 Legoland
Tue 31 Family Seaside Mystery

June

Wed 1 Buckinghamshire Railway Centre
Wed 1 Cotswold Tour
Thu 2 Savill Gardens
Thu 2 Windsor
Fri 3 Gloucester
Sat 4 Sheringham & NNRW
Sun 5 Great Yarmouth
Wed 8 Linc's Aviation Heritage Ctr
Sat 11 National Railway Museum
Sat 11 York
Sun 12 Mystery Tour
Fri 17 National Arboretum & Lichfield
Sat 18 Bridgnorth & SVRW
Sun 19 Skegness
Tue 21 Melton Mowbray
Sat 25 Woburn Abbey Garden Show
Sun 26 London Museums
Sun 26 London Free Time
Mon 27 Wroxham & Mississippi Paddle Boat

**The Perfect Gift
LUNCH & SHOW**

**Wed 14 September –
Kinky Boots or Lion King**

Call us to book or request a brochure
Check out our website for further days out
www.rbtravel.co.uk



WELSH WONDERS - 6 DAYS

The splendour of North Wales is always a surprise to first-timers, who come away saying 'We must go back.' Our six-day holiday takes in Caernarfon Castle where Prince Charles was invested Prince of Wales, lovely Llandudno, Portmeirion, where TV's 'The Prisoner' was staged, the magnificent Llangollen Canal and Chester, one of the seats of the Roman Empire. Not to mention some great shopping! We've even laid on some evening entertainment for you.



PORTBYHAN HOTEL - 5 DAYS

CORNWALL'S BAYS AND BEACHES
Based in a beautifully refurbished harbourside hotel in Looe, we'll be heading out to vibrant Mevagissey, the Lost Gardens of Heligan, and stepping back in time at the quaint fishing villages of Polperro and Fowey. Throughout your holiday you'll be looked after by an expert tour driver and to make the evenings whizz by, top-quality entertainment.

**CALL NOW ON
01536 791066**

GET OUR FREE BROCHURE!
Email taurus@rbtravel.co.uk
www.taurusholidays.co.uk

Local athletic club supports work of Cransley Hospice

The Wellingborough & District Athletic Club have continued their great work for local charities, recently presenting a cheque for £870 to the Cransley Hospice.

The cheque was accepted by Debbie Grant, who expressed her grateful thanks on behalf of the charity which provides hospice and palliative care services for the population of North Northamptonshire; further information about their fantastic work can be found on their website www.cransleyhospice.org.uk.

The Athletic Club adopts a different charity each year and donations have previously been made to the Deaf Children's Society, Mind and the Lakelands Hospice among others. The charity being supported this year is the Brain Tumour Charity. The Club draws its diverse membership from all over the county and

has running groups to suit almost anyone from the fastest 'elite' runners, who continually build bigger trophy cabinets, to successful beginners' groups; they also have an active junior section. So, no matter what your aims or goals, whether it is keeping fit, losing weight, joining a social group or running to be

competitive, they can help! Training sessions are held on Tuesday and Thursday nights at 6.30pm at Wrenn Academy, Doddington Road, Wellingborough, NN8 2JJ. For more details see the club's website www.wdac.org.uk



Sunday 17th April 2016			
Duston Sprint Triathlon			
Name	Position	Time	Category
Daniel Bates	44	01:09:03	V35
Julian Blackwell	53	01:10:25	V45
Christopher Jones	69	01:11:44	V35
Sally Richards	106	01:15:10	V35
Tony Hale	161	01:21:56	V65
Amy Vaughan	173	01:23:11	Senior Female
Stuart Rowse	182	01:24:14	V50
Trudi Knight	226	01:30:51	V40
Brighton Marathon			
Name	Position	Time	Category
Helen Etherington	167	03:40:57	V35
Tony Frain	3760	04:20:20	V50
Great Welsh Marathon			
Name	Position	Time	Category
James Terry	172	04:07:40	M40
Brecon Beacons Half Marathon Trail Run			
Name	Position	Time	Category
Grant Nixon	22	02:18:16	V45
Mark Boyce	53	02:36:41	Senior Male

Genealogy jottings

Have you ever considered museums as a source for discovering more about your ancestors? When I was rootling about amongst some old photographs, I found a postcard of Ashdon School, near Saffron Walden in Essex. Remarks on the reverse explained that it was the school which my grandmother and her siblings had attended – and it piqued my curiosity.

Ashdon has a lovely little museum and, like many of those that are not in large towns and cities, is open only on certain days. I was living in Hertfordshire at the time but made the foray out to the village to see what was there. It was a mine of information, set in what looked like an old Nissen Hut, with rooms laid out to depict a shop, a cottage front room, a bedroom etc. It had a little tea shop attached, which was run by volunteers and so, over my coffee and cake, I chatted to the ladies there. I mentioned the postcard, to which one of them said, “You need to show that to our Glenn as I know that he would be interested,” and went off in search of the chap.

The Ashdon Museum is run by Glenn Miller. Yes, that is his name! Glenn came

By Jan Pearson
Genealogy Specialists, Tracing Our Past, Discovering Our Genes (TOP DOG)
www.genealogy-specialists.com

out from his back office and greeted me enthusiastically. The conversation went rather like this:

Glenn: What is the family name that you are researching?

Me: Smith

Glenn: Okay... any first name?

Me: Erm... John...

Glenn: Okay... now, we had a couple of Smith families in the village so do you have any other names?

Me: Well, he had an older brother named Pharaoh....

At this point, this wonderful chap took a box file down off a shelf, had a rummage and produced a photograph of my great grandfather! I was absolutely amazed and Glenn and I have been in contact ever since.

Check out the museums in the areas where your ancestors came from. You never know – you might find a Glenn Miller of your own!

Harringworth gears up for month of special celebrations

Harringworth Village plans to hang its new Union Jack Bunting for the whole of June, with so many special occasions to mark!

The focus of the celebrations has to be the party to celebrate the Queen's 90th Birthday (4th June), with the return of the Flying Scotsman steaming over the viaduct (4th and 25th) a close second. With a Car Boot Sale and Village Fete on 25th June and Open Gardens on 12th there will be a great number of cakes to bake for the expected number of visitors!

The festivities for the Queen's 90th Birthday on Saturday 4th June will be a village affair, with family and friends welcome to join in the fun and games organised in the afternoon with a special aim to entertain the children. The Afternoon Tea and Games will be followed by a family BBQ in the evening with the guest of honour, a second visit from the Flying Scotsman, around 8pm.

Anyone interested in visiting the area to see the Flying Scotsman 'steaming' over the viaduct around 10am will be encouraged by local radio and the Police to make use of the free parking in the fields adjacent to the viaduct on the Seaton Road (NN17 3AF) rather than park on the local verges. Visitors will be able to purchase refreshments including

tea and coffee and bacon butties served by village volunteers.

After the success of the Harringworth Open Gardens two years ago, Sunday 12th June (2–5pm) promises to have a fine show of eight gardens with splendid Afternoon Teas served in the Village Hall and a Plant Sale. Tickets will be available from the Village Hall from 2pm and a map provided to gain access to the gardens.

The Car Boot Sale on the same day as the Fete on Saturday 25th June is another winning formula and this year Harringworth has even more to offer.

To complement the historic journey of the Flying Scotsman, the exhibition in Harringworth St John the Baptist Church will focus on the history of the famous Harringworth Viaduct which was opened in 1880 and spans the Welland Valley with its 82 magnificent arches as featured on the Harringworth Village website.

Updates on all the events in Harringworth this June will be posted on the Harringworth Website www.harringworthvillage.org village Facebook Page (Harringworth Village News) and Twitter page (@harringworth).

Switch Save Smile: the results

Hundreds of residents have saved money on their energy bills thanks to East Northamptonshire Council (ENC).

282 households are now paying less for their gas and/or electricity because they switched suppliers earlier this year.

99% of those who registered for 'Switch Save Smile' (a collective switching scheme run by ENC and iChoosr) were offered a better deal, with average savings per household of more than £350!

Energy companies SSE, E.ON and Ovo won the auction, putting forward the cheapest energy tariffs.

Rob from Higham Ferrers

has saved £572! He said: “We're getting married this month, so this easy way to save couldn't have come at a better time. All we needed to do was fill in the form with our gas and electricity statements to hand, then sit back and wait. Switching has been absolutely pain-free and we'd recommend it to anyone.”

Karen Pell, Interim Environmental Protection Manager at East Northamptonshire Council, added: “I hope everyone who switched is pleased with their savings and found the process as hassle-free as Rob. The majority of residents saved at least £100 and a few have pocketed over £1,000! Those of you

that switched in the first auction, remember to look out for the next winter round when it will be time to think about switching again.

“For those who missed out this time, don't worry, we're offering this great opportunity to you again. If you know someone who didn't switch, why not let them know they've got a second chance or even give them a hand to register? We want all your neighbours, friends and family to benefit from the scheme, so please help to put a smile on their face.”

To take part in the spring round, visit www.east-northamptonshire.gov.uk/ssss to register by 16th May.

Diamonds diary

AFC Rushden & Diamonds Under 13 Whites are League Champions

	P	W	D	L	GD	PTS
1 AFC Rushden & Diamonds Whites	14	11	1	2	31	34
Corby Kingswood White	14	10	1	3	35	31
Ise Lodge Youth	13	9	1	3	30	28
Stewart & Lloyds Tigers	13	8	0	5	22	24
Corby Warriors Spartans	14	7	1	6	-8	22
Irchester Romans	14	6	0	8	8	18
AFC Rushden & Diamonds Blues	13	1	0	12	-51	3
Great Doddington	13	0	0	13	-67	0

There are a couple of games yet to be played in the league but no one can now catch our Whites, they are the first team to win a league since South Rushden came together with AFC Rushden & Diamonds to form the community youth setup of AFC.

And finally to Dan Richards and Damian Millar for coaching the boys through the season, I know how proud you are of your team.

Dan spoke shortly after the league had confirmed his team had won the league.

"I'm very proud of the boys, it's taken two seasons and a lot of hard work to get to this point but we are finally champions! I think a lot of the credit should go to Mark Cullen for having the courage to take on the coaches, players and parents by challenging us to move to ability based teams when we changed from 9 to 11-a-side. As

difficult as it was at the time, ultimately this change has facilitated the development of both sets of players not just the Whites but the Blues too. When you consider that eight of the title winning team came from the Blues that's a pretty good advert for development of players at our club. We haven't got it right every time of course and I've made mistakes along the way but that's how we learn as coaches.

"It's not just me that has put time and effort into these lads, my co-coaches at this age group, Damian Millar, Darren Fisher and Scott Bayes also deserve equal praise for their dedication and application during their time with the club, thank you gentlemen.

"And to our players, thank you for your work over the last two years, I believed you could do it and I tried to instil in you the belief in you that you could, now you've gone one better and proved it to yourselves, you're an inspiration to me.

"Lastly to the parents of the players, thanks for standing in the rain, coming on sponsored walks, travelling around the county and supporting the team, the club and the coaches throughout. Special mention for the bearded Lino."

Reminder: Northamptonshire Women's & Girls' Under 12 League Cup Final, 28th May, AFC Rushden & Diamonds v Earls Barton FC, Visit www.afcdiamondsyouth.com more details.

The end of the playing season is almost upon us, a point where the preparations for next season start. We already have to get our kit orders ready as our kit is not 'off the



shelf' and requires that little bit longer to get ready. The end of season also brings with it our footy fun day, presentation evening for the first team, AFC youth at 'Party in the Park' as well as friendlies galore as some teams ready themselves for a change of format next year. There are now four formats for youth football, 5 v 5, 7 v 7, 9 v 9 and of course 11 v 11, ideal for helping with the development of young players, giving them pitches and goals in relation to their size – not rocket science I admit, but it still took us some years before we adopted it in this country.

At the time of writing the first team still have the NFA Hillier Senior Cup Final against Kettering to compete in. I will bring you details of what happened in a couple of weeks.

See you next time,
Mark Cullen, AFC Rushden & Diamonds Youth

Pupil shortlisted for prestigious national poetry competition

Oundle School pupil Ed Pryor (17) was shortlisted for this year's Christopher Tower Poetry Competition, with his poem 'Driving Lesson' receiving a prize of £250 awarded at a ceremony held in the McKenna Room in Christ Church College, Oxford on 20th April.

This year's theme of 'wonder' attracted over 1,100 entrants (all born between 1997 and 2000) for the UK's most prestigious poetry competition for 16-18 year olds. It has been running for 16 years, with many schools encouraging entrants for the first time this year.

The judges were Peter McDonald, Christopher Tower Student and Tutor in Poetry at Christ Church, Scottish poet and critic, Alan Gillis and Katherine Rundell, author and Fellow of All Souls College. Prizes were awarded by the Dean of Christ Church, after which the winners were interviewed by the media and filmed reading their poems.

Photographs after the presentation were taken in the Dean's garden, which was once Alice Liddell's garden, hence the theme of

'wonder'. The tree in the background is the Cheshire cat's tree and the doorway is the locked door to the students' garden that Alice was not allowed to open.

The Christopher Tower poetry competition has a reputation for discovering fresh and exciting poetry talent. Previous prizewinners such as Helen Mort, Caroline Bird, Richard O'Brien, Anna Lewis and Annie Katchinska, are now gaining further acclaim in other competitions or within the publishing/ writing world. The competition is just one of the initiatives developed by Tower Poetry at Christ Church to encourage the writing and reading of poetry by young adults. Other projects include summer schools (to which the first three winners are invited as part of their prize), poetry readings, conferences, an ongoing publication programme and website, which is used as an educational resource in schools.

Ashani Lewis, from The Tiffin Girls' School, Surrey, was awarded the £3,000 first prize for her poem 'Flowers From The Dark'. The winner of the second (£1,000) prize was Safah Ahmed (Newham Collegiate Sixth Form Centre, London) with 'Accent' and the third prize winner, Sophia West (Oxford High School) won £500 with 'The Awakening'. Their schools receive £150 each. Each of the three prizewinners are invited to the Tower Poetry Summer School, worth £750 approximately. The other two short-listed winners were: Natasha Blinder (South Hampstead High School, London) and Grace Fraser (Hartismere High School, Suffolk).

109 entrants (excluding the winners) from 97 schools were placed on the longest representing most regions of the UK.

Alan Gillis commented: "Reading through all the poems, I was struck first of all by the great

range and diversity of work in terms of voice, style and subject matter. But overwhelmingly, I was impressed by the consistency of excellence. The experience of judging has

been really uplifting because of the passion and daring, boldness and confidence of the poems entered. This is a wonderful competition."



You can see the winning entries on the Tower Poetry website where the talented young authors read their own poems (www.towerpoetry.org.uk), and further information on the competition and other Tower projects from info@towerpoetry.org.uk or on 01865 286591. Follow on Twitter @TowerPoetry; on Facebook at <http://on.fb.me/HrGdyZ> or on YouTube at <http://www.youtube.com/christophertower1>.

DEENE PARK

The Exclusive Wedding Venue

CORBY,
NORTHAMPTONSHIRE
NN17 3EW

Telephone: 01780 450278
Email: admin@deenepark.com
www.deenepark.com

Regent Wrought Iron Ltd

The Regent Street Wrought Iron Works
180-186 Regent Street Kettering Northants NN16 8QH Phone 01536 485892
High Quality Gates and Fencing Hand Made on the Premises since 1963

Single gates from £60.00
Side entry from £99.00
Double gates from £120.00

We have 18 styles to choose from
All on show in our showroom
Full fitting & painting service.

Visit our website for our Online catalogue
www.regentiron.co.uk

Automatic Estate Gates

- Highest Quality Equipment
- Up To 14' Opening
- Flat Draped or Bow topped
- Fully Installed & Painted
- FREE First Year Service
- Guaranteed for 2 Years
- Full back up & yearly service
- We have been installing automation since 1998
- Fully Pressure tested and certified to BS 12453

We can automate your existing gates (if suitable) or upgrade old equipment to meet BS 12453 safety regulations

Beat The Burglar

Free security locking bolts
Fitted to all our side entry gates
Or full range of mortise locks fitted

Has your garden wall / fence had it? Replace it with wrought iron!
LASTS A LIFETIME USUALLY FITTED IN A DAY.

Corby Outdoors Festival

Corby Walking Festival is in its 8th annual year and has a new look. The event is now being renamed the Corby Outdoors Festival and will be taking place from 30th May–5th June.

A wider range of outdoor activities will be offered, including cycling and outdoor cinema. It's hoped this will encourage more people to be involved with the Festival and experience the health and social benefits that walking and general outdoor activity offers.

As in previous years, the walk programme will still form an important part of the week-long event and will celebrate the wealth of walking opportunities in and around Corby, Northamptonshire.

Cllr Paul Beattie, Corby Borough Council member champion for Cycling and Walking said: "I'm pleased to be supporting this event. Corby borough is rich in open spaces in the town itself and also has the magnificent Rockingham Forest and Welland Valley on its doorstep. The

Festival showcases the fact that you don't have to travel far to enjoy a pleasant walk in one of our parks or woodland areas, like our medieval Kingswood. It's a great way to gain health benefits at the same time."

For regular updates and a copy of the programme visit the website www.corbywalkingfestival.org.uk or contact Suzanne Preston, Rural Pride Officer on 01536 463177 or email Suzanne.preston@corby.gov.uk

Running clubs combine in memory of Captain David Seath

Following the sad news of the death of Afghanistan veteran Captain David Seath, during the Virgin Money London Marathon on Sunday 24th April, Team Balancise of Higham Ferrers and Rushden Runners are planning to get together and run 3.2 miles to raise funds for his chosen charity.

Captain Seath (31) suffered a cardiac arrest near the 23-mile mark just 3.2 miles short of the finish line; he was running in aid of Help for Heroes and had hoped to raise £250 for the forces based charity.

The main run will take place on Sunday 8th May at Stanwick Lakes, a £1 donation will be collected from each runner and donated to Captain Seath's Just Giving page. The run will start by the toilet block near the main Stanwick Lakes building and will cover a 3.2 mile route. Runners are to

gather at 1.45pm for a prompt 2pm start. All members and their families are planning to join in to run or walk the 3.2 miles to honour Captain Seath, including children and dogs.

Keith Hall, the Chairman of Team Balancise, said: "One of our members brought to our attention the fact that Captain Seath's friends and family were finishing his race for him to raise money for his Just Giving page and suggested we may do the same. We thought it was a great idea and Rushden Runners kindly agreed to join us.

"If anyone else wants to join in and donate £1 they would be welcome but please note this is not an official event just a bunch of people getting together to contribute to a worthy cause on David Seath's behalf. All will be welcome."

Henry Chichele Primary School praised in latest Ofsted report

Staff and pupils at Henry Chichele Primary School have been praised by inspectors, as the school was awarded a glowing Ofsted report.

The school, based in Higham Ferrers, achieved a "good" status with inspectors praising the work of the Headteacher, Mr McClymont, and his partnership with teachers and governors resulting in a positive outcome.

Inspectors noted that, "there is a shared vision that enables good teaching to flourish

and pupils behave and achieve well."

Mr McClymont said: "I am delighted with our latest inspection result. The school as a whole has worked tremendously hard to improve in all areas. The children love learning and are well prepared for life and reaching their full potential."

The full report can be viewed here <http://henrychichele.northants.sch.uk/index.php/about-us/our-last-ofsted>

GARDEN DESIGN | LANDSCAPING | DRIVEWAYS



Matt Bettison
GARDEN DESIGN

Designer Gardens

Matt Bettison is based in Thrapston and serves throughout Northamptonshire and surrounding counties, providing Garden Design, Landscaping and Garden Maintenance.

Offering expert garden design which is original and affordable, a professional garden designer will work with you to achieve a stunning outdoor space.

In all of our high quality designs we feature full plant specifications and we tailor any of our designs to your full requirements. We are experienced in producing environments for gardens of any size and shape and can meet the needs for any outdoor space.

A professionally designed garden will not cost the earth and will last a lifetime.



→ Full & Partial Garden Designs
→ Professional, Original Designs
→ Hard & Soft Landscaping



Natural Sandstone

Grade & colour:
18-22mm calibrated Autumn Blend

Sizes (mm):
300x300, 300x600, 600x600, 600x900

Price:
£300 plus vat per pack
£15.63 per square metre plus vat

Pack size:
19.2 square metres

Mail@MattBettison.com

Matt Bettison BA (Hons) Garden Designer
www.MattBettison.com Mail@MattBettison.com Tel: 01832 733328 Mob: 07743 870420

Saturday 7th May Oundle Strollers

Leave Fletton House, Glapthorne Rd 12.30pm
Walk starts 1pm, Willbaston Village Hall
Leader Len Johnson
07796 916644
Explorer 224. Grid Ref. 815/885. Distance 6 miles.

Writing in Wonderland

Northampton Museum and Art Gallery, Guildhall Road, Northampton
10.30am–3pm with a break for lunch and cake!
£10
Tickets available from the museum.
01604 838111 or museums@northampton.gov.uk
Creative Writing Workshop inspired by Tenniel's Alice in Wonderland illustrations on exhibition at Northampton Museum.

Sunday 8th May Organ Recital – James Parsons

Oundle School Chapel
5.30pm
No tickets required
The second of a four part series of organ recitals with organist James Parsons.

All Age Morning Worship

Rushden Mission Church
Wellingborough Road
10.45am
Alan 01933 355302
Informal service led by the Music Group with children's activities.

Morning Service with Communion

Thrapston Baptist Church
10.30am
Preacher: Mat Hussain
Persecution begins. Acts 5:17-42.

Whitefriars Breakfast

Whitefriars Junior School, Boughton Drive, Rushden NN10 9HX
10.15am
Admission free
Simon King 01933 356871
Very informal church - come and share a second breakfast with us, and relax whilst the kids play.

Whitefriars Church Silver Service

The Bridge Community Office at Whitefriars Junior School, Rushden
10.30am
Melvyn Hunter 01933 222910
A traditional church service open to anyone of any age.

Whitefriars Church, Rushden, Countryside Walk – 'Nene Calling'

Central Northampton - details to be finalised: ring for details
10.30am
Andrew Presland 01933 316927
Walking near countryside near the River Nene on the edge of Northampton town centre
[Previously notified as bring at Nunn Mills Road but that is closed for building work].

Monday 9th May Monday Night Live for 7–11 year olds

Thrapston Baptist Church
6.15pm–8pm
£1 per child
Lively and fun group with

tuck, games, songs and bible based illustrations.

Oundle U3A Monthly Meeting

Queen Victoria Hall, West Street, Oundle
Doors open 2pm
Members £1, Non-members £2
01832 275933
“Life in Music” with Andy Smith, a songwriting multi-instrumentalist and singer.

Wednesday 11th May Oundle Strollers

Lower Benefield Church
Walk starts 6.30pm
Leader Brian Collis
01832 272659
Explorer 224. Grid Ref. 884/988. Distance 4 miles.

Open Social Tennis Club Night

Ferrers and Rushden Tennis Club, Higham Ferrers
Recreation Ground, Wharf Road, Higham Ferrers
6.30pm–8.30pm
Steve Roberts (Secretary)
01933 461028
Open, free night for non members at friendly club.
Only a little tennis experience needed.

Corby, A Northamptonshire Village

Methodist Church, Drummingwell Lane, Oundle PE8 4AA
7.30pm
Members free/ Visitors £2
www.northants-fhs.org/
oundleinfo@northants-fhs.org
A talk by Billy Dalziel covering the history of Old Corby Village and the Steelworks.

Bridge of Grace Food Bank

Thrapston Baptist Church
1.30pm–2.30pm
Help for any who are in desperate need of food.

Thursday 12th May Tiddlers Group for 0–3 year olds

Thrapston Baptist Church
9.30am–11.30am
£1 per carer – as many toddlers as you like!!
Friendly and welcoming with lots of toys and play equipment for the little ones to enjoy.

Lunchtime Concert – Pianists

St Peter's Church, Oundle
1.15pm
Free / Lunch can be purchased
Concerts in this beautiful church setting in Oundle.
Lunch is provided for £3.50.

Raunds WI

The Saxon Hall, Raunds
7.30pm
£3.50 for Visitors
Mary Harber 01933 624271
Evening to discuss Resolutions for 2016 with Malvina Keech. Coffee & Cakes.

Friday 13th May Music in Quiet Places: Julian Perkins, clavichord

St Mary Magdalene Church, Geddington
7.30pm
Admission: £14, £12 concessions, £4 under 18s,
Special offer – buy tickets to any three concerts at the same time and save £1 per ticket (applies to full price and

concessions only)

In Person: Oundle Box Office, 4 New Street, Oundle, PE8 4ED
Tel: 01832 274734 Opening hours: 10am–1pm
www.oundlefestival.org.uk
This recital includes works from Froberger, Herbert Howells, J S Bach and others.

Oundle Historical Society: The Princess and the Gunpowder Plot

Methodist Church, Drummingwell Lane, Oundle
7.30pm
Members free, non members £2
Perdita Cawthorne 01832 270372
The Princess and the Gunpowder Plot – Talk by Malcolm Deacon.

Saturday 14th May Oundle & District Care Spring Fair

Victoria Hall, Oundle
9am–12.30pm
Admission free
Toys, Books, Cakes, Bric a Brac, Plants, Tombola, Raffle, Refreshments.

Leilani Barratt sings Berlioz - Les Nuits d'ete

Church of St Mary the Virgin, Titchmarsh
7.30pm
Tickets £10 from berlioztickets@gmail.com, 07952 818235 or on the door.
Mezzo-soprano Leilani Barratt presents an evening of French Song with music by Berlioz, Debussy, Faure, Hahn and Poulenc.

Wellingborough Gospel Choir

St James Church Thrapston
7.30pm
£8 Adults £3 Children
Lindsey Burch 01832730019/
theburchbunch@btinternet.com
Glass of wine and nibbles included in ticket.

Spring Book Sale

Oundle Library
10am–2pm
Free admission
Ex-stock bargains and donated books at amazing prices!

Breakfast with the King

Rushden Mission Church
Wellingborough Road
9am–11am
£3 inc. breakfast buffet
Sandra Fall 01933 312919
Ladies meeting for teaching, prayer, reflection.

Sunday 15th May Evening Service

Rushden Mission Church
Wellingborough Road
5.30pm
Alan 01933 355302
Traditional service with well-known hymns led by Sharon Hollamby.

Whitefriars Church – Morning Worship

Whitefriars Church at Whitefriars Junior School, Rushden
10.15am

All Age Morning Worship

Rushden Mission Church
Wellingborough Road
10.45am
Alan 01933 355302
Informal service led by the Music Group with children's

activities.

Higham Ferrers Footpath Group

Saffron Road car park Higham Ferrers for car sharing
9.15am
Admission free
01858 465852
6.5 mile walk from Wilbarston.

Thrapston Bowls Club Open Day

Thrapston Bowls Club, The Green, Market Road, Thrapston NN14 4JP
2pm
Admission free
Jen Hetherington
01832 734230, email thrapstonbowlsclub@gmail.com
New players always welcome. Experience not necessary. Come along and roll a bowl or two.

Spring Book Sale

Oundle Library
11am–2pm
Free admission
Ex-stock bargains and donated books at amazing prices!

Morning Service Thrapston Baptist Church

10.30am
Preacher: Graham Timson
The value of serving at tables. Acts 6:1-7.

Monday 16th May Monday Night Live for 7–11 year olds

Thrapston Baptist Church
6.15pm–8pm
£1 per child
Lively and fun group with tuck, games, songs and bible based illustrations.

Lecture by Dr Robin Catchpole, University of Cambridge: "Are we alone?"

Chelveston Village Hall
8pm
£3 per person including tea/coffee and biscuits
Steve Williams 01933 650331 or chilernastro@yahoo.co.uk or Mrs Peta Jellis on 01933 356914 or pej@petaj26.me.uk
Dr Catchpole will consider why we might be the only self-aware observers of our universe.

Higham Ferrers WI Meeting

Ault School, Westfield Terrace, Higham Ferrers
2.15pm
Olga Earl 01933 412848
This month's subject will be 'Resolutions'. Tea and cake will be served. The competition will be a plate of 4 cakes. As always new members are always welcome.

Thursday 19th May Summer Tea Dance

Rushden Academy, Hayway, Rushden, Northants NN10 6AG
2pm–4pm
Jo Holmes 01933 350391
Traditional Tea Dance open to the public. Raffle and refreshments provided.

Tiddlers Group for 0–3 year olds

Thrapston Baptist Church
9.30am–11.30am
Friendly and welcoming with lots of toys and play equipment for the little ones



to enjoy. £1 per carer – as many toddlers as you like!

Friday 20th May Music in Quiet Places: The FB Pocket Orchestra

St Mary the Virgin & All Saints Church, Nassington
7.30pm
Admission: £14, £12 concessions, £4 under 18s
Tel: 01832 274734 Opening hours: 10am–1pm
www.oundlefestival.org.uk
A contemporary slant on popular acoustic music from the late 19th and early 20th Centuries.

Rushden Lams presents Northampton Male Voice Choir

Rushden Masonic Hall, Wellingborough Road, Rushden NN10 9YJ
6.45 for 7.15pm
Tickets £15 inc finger supper
Sheila 01933 665684
Proceeds in aid of Alzheimer's Society and Parkinson's UK.

Saturday 21st May Coffee Morning and Plant Sale

Oundle Primary School Hall, Milton Road Oundle
10.30am-12noon
£1 includes tea/coffee

Coffee Morning and Plant Sale

Glapthorn Village Hall PE8 5BE
10.30am–12noon
Admission free
Pauline Davidson 01832 273526

Spring Fete

Woodford CE Primary School
12noon–4pm
Admission free
Claire Clay 017717 696153
Please come along and support our local school. Stalls, games, tombola, refreshments and more.

Every Monday Headway East Northants Craft Club

The Baptist Chapel, Meeting Lane, Irthlingborough
1.30pm-3.30pm
£1 admission
Claire Phillips 01933 652311, claire.phillips@headwayeastnorthants.org.uk

Titchmarsh Folk Dance Club

The Club Room, High Street, Titchmarsh NN14 3DF
8pm-10pm
£1 inc tea/coffee

Julie Bubbles 01536 726858 or bubbles.folksinger@hotmail.com

Oundle Ladies Running Group

Oundle pool car park
6.45pm
Jane Walker 01832 272898, janewalkercakes@icloud.com

Wesley Centre Art Class

Irthlingborough Methodist Church
2pm-4pm Monday
01933 624847
Aqua Aerobic Classes (Term Time Only)
Oundle School Swimming Pool, Milton Road, Oundle
8.45am-9.30am
Admission: £25 for 5 sessions,
Tel: 01832 277208/277195

Baggy pants Yoga

Studio 2, Pemberton Centre, HE Bates Way, Rushden
10am-11am
Tel: 01933 382837 or 07873743256 email: Carole.wyatt@virginmedia.com
£5 per session, no block booking commitment.

Praise and Play (during term time)

St James' Church Thrapston
1.30pm-2.45pm
Free, refreshments available
Anita 735443

Every Monday, Friday & Saturday (Term Time Only) Otters Swim School Lessons

Oundle School Swimming Pool, Milton Road Oundle
Mondays 3.55pm-6.10pm, Fridays 3.55pm-6.10pm, Saturdays 8.30am-12noon
Booked in advance as a block (£5.50 per lesson)
Tel: 01832 277208/277195

1st Monday of the month Oundle Wives

Methodist Church, Oundle
7.45pm
01832 272178
£3 for refreshments and raffle.

Every 2nd Monday (except January & August) Thrapston & District Royal British Legion Branch Meeting

The Thrapston Centre, High Street, Thrapston
7.30pm
Veronica McCurdy 01832 735206

2nd Monday of the month Royal British Legion Rushden Branch Monthly

Meeting
Rushden Football & Social Club, Hayden Road, Rushden
7.15pm
Annual Fee £15
Jake Baker 07525 441267

3rd Monday of the month Diabetes Support Group Type 2
Barnwell Room, Fletton House, Fletton Way, Oundle PE8 4JA
2.30pm
01832 274526 or oundlediabetes@gmail.com

2nd & 4th Monday of the month Stitchat
No. 1 St Osyth's Lane
1pm-4pm
Free
Stephanie Bradley 01832 770011 mornings
managerno.1@oundlebaptist.org.uk

Once a month on a Monday evening Woodturning Club
Hardwick Village, Nr Wellingborough NN9 5AL
7pm-10pm
Paul Lawman 01933 674260

Every Monday & Thursday Oundle Bridge Club
Fletton House, Fletton Way, Oundle PE8 4JA
7pm Start
Tel: 01832 273044

Every Tuesday Coffee Stop
Rushden Mission Church, Wellingborough Road NN10 9TA
10am-12.30pm
Alan Richardson 01933 355302

East Northants Classic Motorcycle Club
New Inn Public House, Wymington
Meet around 7.30pm
Free

Sling Walk
11am
01933 410112
First Tuesday of the month there will be Sling Library at 10am prior to the walk. Second Tuesday meet at Rushden CC Hayway instead of Higham Ferrers)

Rushden Mission Training Band
Mission Church, Wellingborough Road, Rushden
7.30pm-8.45pm
Alan Richardson 01933 355302

Short Mat Bowls
Saxon Hall, Raunds
1.45pm-4pm
£3
Tel: 01933 624545

1st Tuesday of every month Great Companions
Rushden Bowls Club, Northampton Road
7pm-9pm
Yearly Membership £6
Pat Bazeley 07931 964360

2nd Tuesday of the month Tea Dance
Pemberton Centre, Rushden
Dancing to 'Music Box'
2pm-4pm
£3 per person including tea/coffee & cake

Higham Ferrers Guided Tour
Groups of 6-24 people.
Trained guides
Tea and cakes, optional extra
01933 411191

Wildlife Trust Little Bugs Club
10am-11.30am
£1 per child (adults are free)
Louise Tuffin 01604 774043
louise.tuffin@wildlifebcn.org

50+ Adventure Club
Tel: 01536 505548 for further information or visit:
www.fiftyplusnorthantsadventureclub.org.uk

Every Tuesday & Thursday Health Walks Stanwick Lakes
10am-11am
Free – normal car park charges apply.
01933 625522
www.stanwicklakes.org.uk

Every Wednesday Dog Training and Socialisation and Ringcraft
Halefield, Woodnewton, near Oundle
Classes from 6.45pm
01832 293432,
oundledogs@aol.com or www.oundledogs.co.uk

Rainbow Cafe for Tots
(aimed at up to age 5 and their adults)
Stanwick Lakes
10.30am-12noon
£2 per child – normal car park charges apply.
01933 625522
www.stanwicklakes.org.uk

Club Night
Apethorpe Tennis Club
From 6pm

Returners to Work
No.1 St. Osyth's Lane
10am-12noon
01832 770011

Art & Craft Class
Oundle Rural Mind
1 Herne Park, East Road, Oundle PE8 4BZ
Irene Issitt – Manager 01832 275020

Inflatable Fun Session (Times May Vary During School Holidays)
Oundle School Swimming Pool, Milton Road Oundle
5pm-6pm
£3 Adult & £2.25 Child
Tel: 01832 277208/277195

Cambridge First Certificate in English
The Old Town Hall, Market Place, Oundle
9.30am-12.30pm
£25 per week
01832 776336 or info@antierlanguages.co.uk

French Tuition
The Old Town Hall, Market Place, Oundle
From 6pm
Admission: £25 per week
01832 776336 or info@antierlanguages.co.uk

Every Wednesday (Term Time Only) Community ICT Classes
Needham Building, Oundle School SciTec, Glapthorn Road, Oundle
2.30pm-4pm

Yr 7 & 8 Sports Club
Sports Hall, Milton Rd, Oundle

7.45pm-8.45pm
Free admission
A Sports Club for Yr 7 & 8 children including football, badminton, lacrosse, hockey, tennis and basketball.

660 Club
Two Acre Club, off Milton Road
2.15pm–3.45pm
Free admission
Afternoon tea with entertainment for the over 60s hosted by Oundle pupils.

Community ITC Classes
Needham Building, Oundle School SciTec, Glapthorn Road, Oundle
2.30pm–4pm
Free admission
Free computer classes for everyone.

Every Wednesday (except school holidays) Allegra Singers – Three-part ladies choir
Music room at King John School, Thrapston
7.30pm-9.30pm
£3 per session
Veronica 01832 732611 or 07753 472225

1st Wednesday of the month Raunds Ladies Group
The Saxon Hall, Raunds
8pm-10pm
Visitors £3.50

1st and 3rd Wednesday of the month Thrapston Country Dancers
St Johns Ambulance Hall
2pm-3.30pm
ghearnden@tiscali.co.uk
G Hearnden 01933 622827

2nd Wednesday of the month Coffee Morning
Raunds Methodist Church
10am-12noon
01933 383378

2nd and 4th Wednesday of the month Northants Model Makers
Windmill Primary School, Raunds NN9 6LA
Main meeting starts 7.30ish
First couple of meetings free
Bob Humpage 07960 054405 modelmaker@tiscali.co.uk

3rd Wednesday of the month Wellingborough Flower Arrangement Society
St Mary's Church Hall, Knox Road, Wellingborough NN8 1HU
7.30pm
£5
Chairman 01933 222326 or Secretary 01604 870275

Higham and Rushden U3A
Pemberton Centre, Rushden
2pm-4pm
£2 for visitors
Membership Secretary 01933 314425

4th Wednesday of the month Rushden Pensioners Forum
St Peters Church Hall, Midland Road, Rushden
2pm-4pm
Mary Morby 01933 312476 or e.m.m@btinternet.com

Wednesday & Thursday Free Counselling
No.1 St. Osyth's Lane

Oundle
By appointment
01832 770011

Wednesday & Saturday East Northants Athletics Club – ‘Getting Kids Into Athletics’
The Ferrers School, Higham Ferrers
Wed 6-7pm, Sat 9-10am
£4 per session, or Wed & Sat £7
Graham Bufton 07788 698883, grahambufton.ena@gmail.com
Athletics club for ages 7–17.

Every Thursday Rushden Folk Dance Club
St Mary's Church Hall, Rushden
8pm-10pm
First visit free, £2 per night thereafter
Val 01933 387327

The Silverfox Turners Club
Dale End Scout Headquarters, Croyland Road, Wellingborough
10am-1pm
£2 all members
Secretary Trevor Rhodes 01933 382790

Free guided walk around Oundle
Oundle
11am
Admission free
oundlib@northamptonshire.gov.uk or call 0300 126 1000

Move for Health
No. 1 St Osyth's Lane, Oundle
2pm-3pm
Free
01832 770011 mornings.

Market Drop-in
No. 1 St Osyth's Lane, Oundle
10am-2pm
Free
01832 770011

Enjoy Yoga
Whitefriars Infant School, Rushden
7pm-8.30pm
£5 per session.
Gill Hughes 01933,313494 or Hughes-G17@sky.com

Adult & Child Swim Sessions (Term Time Only)
Oundle School Swimming Pool, Milton Road Oundle
9.15am-9.45am
Booked in advance as a block (£4.75 per lesson)
Tel: 01832 277208/277195

Every Thursday during school term time Music Makers
Titchmarsh Pavilion
9.30am-10.15am
£4 per child and £2 per sibling.
Naomi Cooper on music makersnorthants@gmail.com

Music Makers
Joan Strong Centre, Oundle
11.15am-12noon
£4 per child and £2 per sibling.
Naomi Cooper on music makersnorthants@gmail.com

Little Treasures Tots Group
St Laurence's Church, Stanwick
9.30am-11am
Donations to cover costs
Nicki 01933 625658

Music Makers
Stanwick Village Hall
2pm-2.45pm
£4 per child and £2 per sibling
Naomi Cooper on musicmakersnorthants@gmail.com

Community Art Classes
Oundle School Art Department
7.30pm–8.30pm
Free admission
Free Art Classes for people with a physical or learning disability.

1st Thursday of the month Raunds & District History Society
Saxon Hall, Raunds
7.30pm-9.30pm
£3 per visitor, includes refreshments
Secretary 01933 461480
raundshistory@btinternet.com

3rd Thursday of the month Painting Class with Nick Baldwin
Chelveston Village Hall, 10am-4pm
£17 per session
Kathy Gyngell 01933 389936

Every 3rd Thursday of the month Ise & Nene Valley Turners
Counties Community Centre, Hertford Rd, Kettering NN15 6LG
7pm
Members Free, Visitors £7
Peter Bond 01933 741835 or peterjbond@btinternet.com

Thursday Market Day Mornings No.1 Cafe - Free Drop-In
No.1 St, Osyth's Lane
10am-2pm
01832 770011

Every Friday ‘Tea + Tots’ Little Ducklings Pre-School
Barnwell
1.30pm-3pm
£1.50 per family
01832 358085

Walk and Chat
Rushden Hall Park, Under Flag Pole
10am
Sue Mckay 07739 327022, sue.mckay@groundwotrk.org.uk

Music Makers
Nene Centre, Thrapston
12.45pm-1.30pm and 1.45pm-2.30pm

£4 per child, £2 for siblings
musicmakersnorthants@gmail.com
Naomi Cooper 07815 293893

Every Friday (Term Time Only) Over 60s FREE swim
Oundle School Swimming Pool, Milton Road, Oundle
3pm-3.45pm
Free admission
Tel: 01832 277208/277195

Pre-School Swimming Lessons
Oundle School Swimming Pool, Milton Road, Oundle
1.55pm-2.25pm & 2.30pm-3pm
Booked in advance as a block (£6.75 per lesson)
Tel: 01832 277208/277195

1st Friday of the month (recommend checking before travelling) Craft Cafe
Stanwick Lakes
10.30am-1pm
Modest charges for some materials – normal car park charges apply.
01933 625522
www.stanwicklakes.org.uk

3rd Friday of the month Raunds Tea Dance
Saxon Hall, Raunds
2pm-4.15pm
£3 (plus 50p for Raffle)
Mrs Wicks 01933 312623

U3A Branch Meeting
The Plaza, Cosy Nook, Thrapston NN14 4PS
10am-12noon
£2 (Visitors) £1 (Members) includes refreshments

3rd Friday of the month (recommend checking before travelling) Stanwick Stitchers
Stanwick Lakes
10.30am
Free entry – normal car park charges apply.
01933 625522 or Pauline on 01933 229817
www.stanwicklakes.org.uk

1st Saturday of the month Coffee Morning
St Mary's Church, Ringstead
10am-12noon
01933 624262 for details

Thrapston Farmers' Market
Thrapston High Street
9am-1pm
www.thrapstonfarmersmarket.moonfruit.com



To submit your event please contact us via our website in the following format:
Date, event, place, time, admission fee (if applicable), contact information, 15 word description.

Nene Valley news Classifieds

Deadlines for all classifications: 5pm Monday prior to issue date.
A complete version of our Terms and Conditions can be found online at www.nenevalleynews.co.uk. Pay by credit/debit card or cheque.
All major credit/debit cards accepted.

To advertise in Nene Valley News please call **01522 513515**.

Family notices

*Nene Valley News
can help you make
those important family
announcements.*

BIRTHS

ENGAGEMENTS

MARRIAGES

ANNIVERSARIES

BIRTHDAYS

DEATH NOTICES

IN MEMORIAM

THANKS

For help and
information to place
your notice please call
01522 513515 or visit
www.nenevalleynews.co.uk



ACCOUNTANCY

Jon Essam & Co Ltd
Chartered Accountants

- Self Assessment Tax Returns
- Limited Company services
- VAT & CIS Returns
- New Business Start Ups and advice
- Payroll & Auto-enrolment services
- Sage & Xero specialists
- Free initial consultation

Tel: 01832 730280 Fax: 01832 730281
info@essamca.co.uk www.essamca.co.uk

23 Cottingham Way, Thrapston,
Kettering, Northants, NN14 4PL



CARE HOMES

Rose Cottage Residential Care Home Woodford

We are a small care home with eight residents only.
All rooms are single en-suite and ground floor.
We provide respite care and day care.
Telephone 01832 735417
www.rosecottagewoodford.co.uk

Follow us on Facebook



DRAUGHTSMANSHIP



MUNRO
DRAUGHTING Ltd.

LOCAL ENGINEERING CAD DRAUGHTING COMPANY

LAYERING STRUCTURES TO SUIT

PAPER DRAWINGS CONVERTED

ESTABLISHED 1998 www.munrocad.co.uk
OVER 45 YEARS EXPERIENCE CONTACT: 079 2978 7139



FOOD

IRTHLINGBOROUGH DOWNLOAD
KEBAB, PIZZA OUR NEW APP
& FRIED CHICKEN SEARCH
Since 2004 IRTHLINGBOROUGH
KEBAB IN YOUR APPS!
www.ikptakeaway.com • 01933 655655



GARAGES

Car Spares

Upper Benefield near Oundle.

Scrap cars wanted, good prices paid and
spares available. Decent caravans wanted.

Call us on: (01832) 205253 (closed Sundays)



HEALTH

Foot Care Services

Toe Nail Cutting, Hard Skin and
Corn Removals, Diabetic Footcare,
Fungal Infections, Cracked Heels,
Thickened & Ingrowing Toe Nails.

0772 306 0940 Home Visits Available

Happy Feet
the little foot clinic

At Newton Hall
Opposite
Rushden Library



HOME IMPROVEMENTS

Kevin Neil Chambers

RE-BOARD & SMOOTH CEILINGS
PLASTERING - COVING - PATIOS
GARDEN WALLS - FENCING - BLOCK PAVING
NO JOB TOO SMALL
01832 731087 OR 07713 890754
RELIABLE, CLEAN AND FRIENDLY SERVICE
kevinchambers07@btinternet.com

Kitchen Door Solutions

Replacement doors and kitchen refurbishment

Doors available in solid wood, painted and laminate finishes



Iain Smith

Tel: 01933 311310

Mob: 07583 869741

SPECIALISTS

SINCE 1980

The WOODWORKS

Kitchen service

SPECIALISTS IN ALL ASPECTS OF KITCHEN REFURBISHMENT

Replacement Kitchen doors

Worktops supplied & fitted

Sinks, Taps & Appliances

Wardrobes built & fitted

Made to measure

Bathroom furniture



Update your existing kitchen to give
you stunning looks, optimised storage
space and increased accessibility

WWW.WOODWORKS-KITCHENS.CO.UK Call now for a free no obligation quote

Family business est 1999

01933 449239

CONSERVATORIES

EG VICTORIAN 3500 BY 3500

FULLY INSTALLED INCLUDING

ALL BRICKWORK AND VAT

£7250

ALL OTHER DESIGNS AND SIZES AVAILABLE

UNBEATABLE PRICES

PHONE NICK ALLINGTON ON

(01832) 734070

WWW.CONSERVATORIESBUILT.CO.UK

ALAN TAYLOR

For your local plastering

Boarding, Covering, Rendering
All aspects of plastering. Enquiries welcome.
Call Alan for a free quotation or advice on
01933 430098 or 07977 926717

!!!GET PLASTERED!!!

For all your plastering needs.
No job too small, no fuss, no nonsense!
Reliable and trustworthy service
at the best possible price.
Call Steve for free, friendly
advice or a free quote.
07703 720138 • 01933 430051

Debbie Dawson & Son Interior Painters and Decorators

• Free estimates • Over 15 years experience
Tel: 01832 274652 Mobile: 07779 393458

10% OAP DISCOUNT



Ballast • Type1 MOT • Gravel • Sand • Topsoil
All aggregates available for delivery or collection
We also sell firewood & cement!
01933 628273 www.clark-aggregates.co.uk

Ashby's Allsorts

Home Improvement & Handyman Services

Free Estimates

No Job Too Small

Inside and Outside Work Undertaken

Public Liability Insurance

Quality Work at Competitive Prices

Tel: 01832 771020

Mobile: 07584 673767

Email: contact@ashbys-allsorts.co.uk

www.ashbys-allsorts.co.uk

Based in Thrapston, we service a radius of 30ish miles

Jon Spencer
Technical Drawing
Services
Plans drawn for planning and
building regulation applications
01933 316044



HOME SERVICES

AERIAL SERVICES.TV

AUDIO VISUAL & SECURITY SPECIALISTS

- Free-view
- Free-sat
- CCTV
- Wireless alarms
- Sky
- BT vision
- European satellites
- Wall mounted televisions
- Bird spikes
- Extra Television points
- Telephone points
- Special heights installation team
- Audio visual
- Home cinema
- HD anywhere

All professionally installed and maintained by qualified
and fully insured TrustMark approved engineers.



Call today: 07800 597060 or 01536 388073

Free phone: 03330 063003 Email: support@aerialservices.tv

www.aerialservices.tv

Victoria's Cleaning Services
One off cleans
General weekly cleans
Ironing services
Competitive prices
07731 860581
bokkie87@hotmail.com

DC Heating
SAFE IN OUR HANDS
YOUR LOCAL PROFESSIONAL
HEATING AND PLUMBING
ENGINEERS YOU CAN TRUST
REPAIRS • SERVICING • INSTALLATIONS
Which? Trusted trader safe Worcester 10 YEAR WARRANTY

Phone today for a free quotation on

Tel: 01933 392 719

www.dcheatingengineers.co.uk

Easyflow Plumbing

Plumbing & Heating Services

Bathroom Installations

Heating Systems

General Household Plumbing

Tel: 07840 254 025 or 01832 730 798
roberttradford77@gmail.com

POSITIVE ELECTRICAL & PLUMBING SERVICES

PART P APPROVED ELECTRICAL CONTRACTOR

RELIABLE & PROFESSIONAL

NEW BUILDS, EXTENSIONS, REWIRES

FUSE BOARD UPGRADES, SHOWERS & MORE

ALSO FIRE ALARMS & EMERGENCY LIGHTING

FOR A QUOTE OR ADVICE, CONTACT PAUL ON:

OFFICE: 01832 732881

MOBILE: 07939 088246

OR EMAIL: postve@hotmail.com

PGR
Plumbing & Heating
Tel: 01933 698116
24 Hr Emergency Service
Email: pgrplumbing@btinternet.com
Web: www.pgrplumbing.co.uk
Specialists in Gas Installations
Gas Servicing & Maintenance
Landlords Gas Safety Certificates
Central Heating Powerflushing
Household Plumbing & Drainage

HANDY HERBERTS

Home & Garden Maintenance

All garden and exterior maintenance work
undertaken including professional
gutter cleaning, graveling, fencing,
external painting and hedge trimming.
01933 563365 or 07725 225214
handyherberts@yahoo.co.uk

Plumber — local & fast!

RGJ PLUMBING AND HEATING

Plumbing

- Full bathroom installation (inc carpentry & tiling)
- Burst pipes & leaks
- Toilet repair/replace
- Taps, sinks repair/replace
- Showers repair/replace & pumps

Heating

- Full central heating installation
- Boiler servicing/breakdowns
- Landlord safety certificates
- Power flushing
- Radiators & valves
- Pumps & cylinders



No call-out charge!
City & Guilds Qualified
All work guaranteed



01933 588005 or 07921 469471

PLUMBER

All plumbing work undertaken - No call out charge

Toilet repairs - Dripping overflows - Leaks and bursts
Garden taps installed - Tap repairs and replacements
Radiators supplied and fitted

20 years' experience

Call Tim 01832 358248 or 07957 550660

CLEAR THE JUNK

The Rose Clearance Service

Full - Part - Single Items. Logs sold
Fully Registered and Insured. Est 30 years.
www.rose-clearance-services.co.uk
Tel: 01933 317113 or 07761 248266

Part P Registered **A. SEATON ELECTRICAL LTD**

- Rewires, fuse board replacements
- Fault finding, extra sockets & lights
- Testing, inspection & certification
- No job too small, free estimates given

Email: seatonsparky@gmail.com
T: 01933 778504 M: 07952 249885

ENSIGN GAS ENGINEERS
GAS FIRES, GAS COOKERS
INSTALLATION, SERVICE AND REPAIR
Recommended service agent for:
Focal Point Fires, Superior Fires and Eco Fires
NO CALL OUT CHARGE
Tel: 01933 318327

LADY TILER
WALLS AND FLOORS
Friendly advice. No job too big or too small.
Please contact Karen
Tel: 01933 461295 / 07975 752580

T.C. WHEATCROFT (ELECTRICAL)
For electrical and associated accessories
wide range • in depth • small quantities
Large range of fluorescent tubes
eg white 5 foot T8 tube - £5.50
Now open: Tuesday – Saturday, 8.30am until 5pm
4 Church Street, RUSHDEN NN10 9YT
Tel: 01933 312816 Email: david39cole@gmail.com

ITEMS FOR SALE

BEKO FREEZER, white upright as new, 5ft.
Buyer collects, £70. Ladies grey suede coat, fur lined, never used £30. Mens tan suede coat, fur lined, never used £30. Tel (01933) 356620.

PET SERVICES

Country Companions Pet Services

Services include:

- Doggy Day Care
- Dog Walking
- Puppy Visits
- Pet Sitting
- Cat Visits
- Home Boarding

Contact Sarah on:
07766 523292
www.ccpetservices.co.uk
sarah@ccpetservices.co.uk



REMOVALS

David Mallett

REMOVAL, STORAGE & GENERAL HAULAGE

HOME AND ABROAD

For a **FREE** quotation call

Mob: 0788 996 8064

Tel: 01832 731570

Local Friendly Service



SITUATIONS VACANT



Huxlow Science College

Finedon Road, Irthlingborough, NN9 5TY

Vacancies

EXAM INVIGILATORS REQUIRED

£8.43 PER HOUR

(Inclusive of statutory holiday and sick pay)

We require a team of Invigilators who are prepared to work on an on-call basis to meet the needs of a wide range of subjects and qualifications during this exam season and beyond.

Do you have spare time on weekdays during term time?

Are you organised, reliable and have good attention to detail?

Are you flexible enough to work on an on-call basis?

Can you follow instructions to the letter?

Are you keen to provide a structured and orderly environment to our pupils during their exam period?

If so, we would like to hear from you!

CASUAL COVER SUPERVISORS

£10.68 PER HOUR

(Inclusive of statutory holiday and sick pay)

Do you have GCSE English & Mathematics (Grade A*-C)?

Do you have spare time on weekdays during term time?

Do you have experience of working with young people?

Are you able to communicate with students of differing ages and abilities?

Do you have the ability to promote positive behaviour in young people?

Would you like to assist your local secondary College by supervising our students in lessons when Teachers are absent?

Are you flexible and reliable?

If so, we would like to hear from you!

These vacancies will close when the positions have been filled.

More information and application forms at:
www.huxlow.northants.sch.uk/vacancies

Tel: 01933 650496

Email: hr@huxlow.northants.sch.uk

Huxlow Science College is committed to safeguarding & promoting the welfare of children & young people and expects all staff & volunteers to share this commitment. DBS, Reference, Identity, Criminal Record and Medical checks are essential for all posts at the College.

Huxlow are an Equal Opportunities employer and welcome applications from all members of the community.



PUBLIC NOTICES

NORTHAMPTONSHIRE COUNTY COUNCIL

ROAD TRAFFIC REGULATION ACT 1984 - SECTION 14

THE NORTHAMPTONSHIRE COUNTY COUNCIL (PUBLIC BYWAY NH16 - PARISH OF LOWICK & PUBLIC FOOTPATHS ND10 & ND12 - PARISH OF ISLIP)

(TEMPORARY CLOSURE) ORDER 2016

NOTICE IS HEREBY GIVEN that the Northamptonshire County Council have made an Order the effect of which will be to temporarily prohibit all motorised vehicles, pedestrians, equestrians and cyclists from proceeding along that length of Public Byway NH16 in the Parish of Lowick and Public Footpaths ND10 and ND12 in the Parish of Islip as specified below. Access to land or premises adjacent to the said lengths of byway and footpaths is unaffected.

RIGHT OF WAY TO WHICH RESTRICTION APPLIES: The route of NH16 to be closed starts at point A on the map at National Grid Reference (NGR) SP97430 80409. The route travels generally south west for approximately 2107 metres to point B at NGR SP96707 78721. The route to be closed is shown by a solid black line between points A - B. The route of ND10 to be closed starts at point C on the map at National Grid Reference (NGR) SP98388 79001. The route travels generally west for approximately 1633 metres to point D at NGR SP96781 79077. The route to be closed is shown by a solid black line between points C - D. The route of ND12 to be closed starts at point F on the map at National Grid Reference (NGR) SP96793 79080. The route travels generally north for approximately 433 metres to point E at NGR SP96737 79508. The route to be closed is shown by a solid black line between points F - E.

REASONS FOR RESTRICTION: The restriction is required on the grounds of public health and safety.

PERIOD OF CLOSURE: The proposed Order will come into effect on 8th May 2016 and will continue in force for a period of six months. An application may be made for the approval of the Secretary of State for Transport for the Order to be extended if this proves necessary. However, the restriction specified will have effect only at such times and to such an extent as is indicated by the display of notices.

ALTERNATIVE ROUTE: There are no suitable alternative routes.

Dated this 7th day of May 2016
QUENTIN BAKER, Director of LGSS Law

PKG/ROW/073
If you require any further information please contact Katie Angel on 01604 883451.



PUBLIC NOTICE

TOWN AND COUNTRY PLANNING ACT 1990 (AMENDED BY THE LOCALISM ACT 2011) NEIGHBOURHOOD PLANNING (GENERAL) REGULATIONS 2012 (as amended)

DESIGNATION OF NEIGHBOURHOOD AREAS

Notice is given that an application has been made by the following parish council for the designation of a Neighbourhood Area, under Section 61G of the Town and Country Planning Act 1990 and Regulation 5 of the Neighbourhood Planning (General) Regulations 2012 (as amended):

• Glapthorn Parish Council (designation of a new Neighbourhood Area)

This will enable the Parish Council to undertake neighbourhood planning and in particular to prepare a Neighbourhood Plan for the parish. It is intended that wider, strategic planning issues will be addressed through the adopted Local Plan for East Northamptonshire Council, which consists of the North Northamptonshire Core Spatial Strategy (adopted June 2008); Rural North, Oundle and Thrapston Plan (adopted July 2011); and saved policies from the East Northamptonshire District Local Plan (adopted November 1996).

Preparation of a replacement Local Plan is already underway, which will consist of the North Northamptonshire Joint Core Strategy (JCS) 2011-2031 and relevant site specific Plan(s), prepared by East Northamptonshire Council. It is anticipated that the JCS will be adopted during summer 2016, when it will entirely replace the 2008 North Northamptonshire Core Spatial Strategy and saved policies from the East Northamptonshire District Local Plan. It will also replace a number of policies from the 2011 Rural North, Oundle and Thrapston Plan.

East Northamptonshire Council is seeking to designate a Neighbourhood Area boundary for the entire area of the parish of Glapthorn.



In accordance with Regulation 6 of the Neighbourhood Planning (General) Regulations 2012, the proposed boundary is now advertised for comments as to whether there is any reason why East Northamptonshire Council should not make the designation. Further information can be found online: www.east-northamptonshire.gov.uk/consultation

Copies of the proposed Neighbourhood Area boundary shall be available to view at the following locations, between **Friday, 6 May** and **Monday, 6 June 2016** inclusive:

- Customer Service Centre, Cedar Drive, Thrapston, NN14 4LZ (8:45am-5pm, Monday to Friday)
- Customer Service Centre, Newton Road, Rushden, NN10 0PT (9am-4:30pm, Monday to Friday)
- Customer Service Centre, Oundle Library, Glapthorn Road, Oundle, PE8 4JA (10am-1pm, Monday to Friday)
- Thrapston Library, High Street, Thrapston, NN14 4JJ (10am-6pm, Tuesday to Friday; 10am-2pm, Saturday; 11am-2pm, Sunday).

Any comments concerning the proposed neighbourhood planning boundary should be made, in writing, to: Planning Policy and Conservation, East Northamptonshire Council, Cedar Drive, Thrapston, Kettering, NN14 4LZ; or by e-mail to planningpolicy@east-northamptonshire.gov.uk no later than 4pm on **Monday, 6 June 2016**.

Paul Bland
Head of Planning Services
East Northamptonshire Council

KM Media & Marketing



To advertise in
Nene Valley News
please call
01522 513515

LICENSING ACT 2003

APPLICATION FOR A PREMISES LICENCE
(SECTION 17)

Notice is hereby given that Oliver Sharp/Robert Langridge have applied to East Northants District Council for the grant of a Premises Licence in respect of farmland between Elton and Warrington (Grid Reference 092926) and intend to carry on the following licensable activities: sale of alcohol, late night refreshment and provision of regulated entertainment. The premises licence is proposed to run from 12 noon on the second Friday in August until 12 noon the following Monday annually.

The Licensing register may be inspected at the Licensing Authority, East Northamptonshire Council, Cedar Drive, Thrapston, Northants NN14 4LZ Y, between 08.45am-5.00pm Monday to Friday.

Any representation by a Responsible Authority or interested party must be made in writing to the above address by 27th May 2016.

It is an offence knowingly to make a false statement in connection with an application punishable on summary conviction by a maximum fine of £5,000.

Oliver Sharp/Robert Langridge

NORTHAMPTONSHIRE COUNTY COUNCIL
ROAD TRAFFIC REGULATION ACT 1984 -
SECTION 14

THE NORTHAMPTONSHIRE COUNTY COUNCIL
(THE LANE, EASTON ON THE HILL)

(TEMPORARY PROHIBITION OF THROUGH
TRAFFIC) ORDER 2016

NOTICE IS HEREBY GIVEN that Northamptonshire County Council have made an Order the effect of which is to prohibit traffic from proceeding along that length of The Lane, Easton on the Hill as set out below.

LENGTH OF ROAD TO WHICH RESTRICTION APPLIES: That length of The Lane, Easton on the Hill from West Street to Church Street.

REASONS FOR RESTRICTION: The restriction is required for safety during new gas connection.

PERIOD OF CLOSURE: The proposed Order will come into effect on 23rd May 2016 and will continue in force for a period of eighteen months. An application may be made for the approval of the Secretary of State for Transport for the Order to be extended if this proves necessary. However, the restriction specified will have effect only at such times and to such an extent as is indicated by the display of signs prescribed by the Traffic Signs Regulations and General Directions 2002.

EXPECTED DURATION: It is expected that the road will be restricted for five days.

ALTERNATIVE ROUTES: use West Street, High Street and Church Street.

Dated this 7th day of May 2016
QUENTIN BAKER, Director of LGSS Law

PKG/T16/141
If you require any further information please contact Gary Thorp on 01604 883400.

NORTHAMPTONSHIRE COUNTY COUNCIL
ROAD TRAFFIC REGULATION ACT 1984 -
SECTION 14

THE NORTHAMPTONSHIRE COUNTY COUNCIL
(MARKET ROAD, THRAPSTON)

(TEMPORARY PROHIBITION OF THROUGH
TRAFFIC) ORDER 2016

NOTICE IS HEREBY GIVEN that Northamptonshire County Council have made an Order the effect of which is to prohibit traffic from proceeding along that length of Market Road, Thrapston as set out below.

LENGTH OF ROAD TO WHICH RESTRICTION APPLIES: That length of Market Road, Thrapston from Grove Road to Hortons Lane.

REASONS FOR RESTRICTION: The restriction is required for safety during BT works.

PERIOD OF CLOSURE: The proposed Order will come into effect on 5th June 2016 and will continue in force for a period of eighteen months. An application may be made for the approval of the Secretary of State for Transport for the Order to be extended if this proves necessary. However, the restriction specified will have effect only at such times and to such an extent as is indicated by the display of signs prescribed by the Traffic Signs Regulations and General Directions 2002.

EXPECTED DURATION: It is expected that the road will be restricted for one day.

ALTERNATIVE ROUTES: use Huntingdon Road, High Street and Midland Road.

Dated this 7th day of May 2016
QUENTIN BAKER, Director of LGSS Law

PKG/T16/146
If you require any further information please contact Gary Thorp on 01604 883400.

NORTHAMPTONSHIRE COUNTY COUNCIL
ROAD TRAFFIC REGULATION ACT 1984 -
SECTION 14

THE NORTHAMPTONSHIRE COUNTY COUNCIL
(HIGH STREET, LITTLE ADDINGTON)

(TEMPORARY PROHIBITION OF THROUGH
TRAFFIC) ORDER 2016

NOTICE IS HEREBY GIVEN that Northamptonshire County Council have made an Order the effect of which is to prohibit traffic from proceeding along that length of High Street, Little Addington as set out below.

LENGTH OF ROAD TO WHICH RESTRICTION APPLIES: That length of High Street, Little Addington from the junctions with Back Lane.

REASONS FOR RESTRICTION: The restriction is required for safety during repairs to leaking hydrant.

PERIOD OF CLOSURE: The proposed Order will come into effect on 17th May 2016 and will continue in force for a period of eighteen months. An application may be made for the approval of the Secretary of State for Transport for the Order to be extended if this proves necessary. However, the restriction specified will have effect only at such times and to such an extent as is indicated by the display of signs prescribed by the Traffic Signs Regulations and General Directions 2002.

EXPECTED DURATION: It is expected that the road will be restricted for three days.

ALTERNATIVE ROUTES: use Back Lane.

Dated this 7th day of May 2016
QUENTIN BAKER, Director of LGSS Law

PKG/T16/140
If you require any further information please contact Gary Thorp on 01604 883400.

Members' Allowances 2015/16

In accordance with the provisions of the Local Government and Housing Act 1989, the Local Government Act 2000 and the Local Authorities (Members Allowances) Regulations 2003, the following allowances and expenses were paid to or on behalf of councillors, as well as town or parish councillors who are members of the Joint Standards Complaints Committee and

the independent person (and their reserve) appointed to be consulted by the Monitoring Officer in respect of complaints over councillor conduct, in 2015/16. The value of the basic and special responsibility allowances and travel and subsistence expenses paid were in line with the adopted Members Allowances Scheme for East Northamptonshire.

COUNCILLORS	Allowances			Expenses			TOTAL
	Chairman of the council £	Basic £	Special responsibility £	Travel and subsistence £	IT provision £	Provision of car for civic duties £	
Baden P		447.04			20.84		467.88
Beattie R		4089.78			250.00		4,339.78
Boto T		4536.82	1,227.96	234.00	387.88		6,386.66
Brackenbury D		4536.82	3,683.04		250.00		8,469.86
Brackenbury W		4536.82			250.00		4,786.82
Bradberry P		447.04	376.22	227.70	22.05		1,073.01
Capp D		447.04			29.42		476.46
Carter V		4089.78		35.70			4,125.48
Farrar J		4536.82		59.40	407.20		5,003.42
Gell R		4536.82	3,118.70	273.60	266.40		8,195.52
Glithero M		4536.82	1,227.96	755.95	465.16		6,985.89
Greenwood-Smith G		4536.82	1,782.03	440.50	457.60		7,216.95
Harrison H		4089.78			250.00		4,339.78
Harwood G		4536.82	4,628.22	596.20	538.00		10,299.24
Hillson M	5,100.00	4536.82		435.10	250.00		10,321.92
Hobbs S		4536.82		147.60	144.00		4,828.42
Hollomon M		4536.82			119.88		4,656.70
Homer S		447.04			29.42		476.46
Howell H		4089.78		233.10	250.00		4,572.88
Hughes D		4536.82		117.00			4,653.82
Hughes SJ		4536.82		40.50			4,577.32
Jenney B		4536.82	777.25	1,168.20			6,482.27
Jenney JD		4536.82	917.06	346.50	250.00		6,050.38
Jones L		4089.78			250.00		4,339.78
Lewis R		4536.82	3,683.04	504.45	370.00		9,094.31
Lucille E		447.04			29.42		476.46
Maxwell D		4089.78		108.00	250.00		4,447.78
Mercer A		4536.82		190.80	433.72		5,161.34
Mercer G		4536.82	1,039.80	954.95	250.00		6,781.57
Nightingale R		447.04		40.50	26.75		514.29
North S J		4536.82	7,882.25	235.15	250.00		12,904.22
Northall B		447.04		8.10	20.72		475.86
Peacock S		4536.82	165.94		183.72		4,886.48
Pinnock J		4089.78		121.50	250.00		4,461.28
Pinnock R		4536.82		72.90	490.00		5,099.72
Powell R		4089.78			250.00		4,339.78
Raven-Hill V		4089.78		157.95	250.00		4,497.73
Read D H		447.04	376.22		29.42		852.68
Reichhold CR	850.00	4536.82		501.20			5,888.02
Sauntson A		4536.82		195.30	258.00		4,990.12
Shacklock G		4089.78		199.35	258.58		4,547.71
Smith A		4536.82					4,536.82
Stearn P		4536.82	3,616.68	257.40	409.72		8,820.62
Taylor C		447.04					447.04
Underwood R		4536.82		396.00	247.44		5,180.26
Vowles J		4536.82	2,751.98	37.35	538.00		7,864.15
Wathen P		4536.82	1,083.00	342.40	252.00		6,214.22
Whiting P		4536.82		200.70	90.00		4,827.52
Wood C		447.04					447.04
Wright C		4536.82	3,249.96	72.00	466.00		8,324.78
Joint Standards Complaints Committee							
Tyman R - Parish Council Representative							0.00
Munday D - Parish Council Representative							0.00
Cowan F - Parish Council Representative				59.40			59.40
Sparkes R - Parish Council Representative							0.00
Lawson D - Parish Council Representative							0.00
Whittaker A - Parish Council Representative							0.00
Others							
Owen E - Members Remuneration Panel							0.00
Haynes A - Members Remuneration Panel				31.50			31.50
Barnard V - Independent (non elected) Person		1,134.17		44.43			1,178.60
Sortwell A - Independent (non elected) Reserve		453.49					453.49
	5,950.00	183,060.46	41,587.31	9,842.38	10,491.34	0.00	250,931.49

Glenn Hammons, Chief Finance Officer. East Northamptonshire Council, Cedar Drive, Thrapston, Northamptonshire NN14 4LZ



KM Media & Marketing
Your partner in publishing
ONLINE | IN PRINT | IN DIGITAL



To advertise in
Nene Valley News
please call
**01522
513515**

Chess Corner



By Derrick Sims

It is just over 12 months since Rushden A were competing in the semi-final stage of the John Robinson Knockout competition. On that occasion they were up against the eventual winners, Chess Mates B. Although the game was drawn, Rushden were eliminated on the tiebreak rule. This year Rushden faced Chess Mates A in the battle for a place in the final.

Hugh Murphy was competing against Chess Mates' Chris Ross on board 1. Hugh developed a sound opening with extra space on the Queen side but in the end, in what Hugh admitted was a slightly reserved performance, a draw was agreed. James Gardner was progressing reasonably well on board 2 until he pushed his King forward, exposing it to attack by Kamau's pieces. James was unable to recover from this and resigned shortly afterwards. Rushden's Captain, Alan Lewis, had a good game on board 5 when Curran's Bishop was pinned in front of his King after Alan

captured his Knight. Alan maintained his piece advantage and Curran eventually conceded defeat. Nik seemed in trouble early on against Northampton's Eva Ressel when she pushed her pawns forward harrying his Knight. She then managed to gain and keep a pawn advantage. The final nail in the coffin for Nik was when he exchanged his Queen for a Knight and a Rook. Saj had a tight game against Jefta Jawi but skilfully engineered an endgame advantage, leading to Jefta's resignation and a tied result. As in the previous year Rushden were eliminated from the competition on the tiebreak rule. In the words of the immortal bard Rushden once again suffered the slings and arrows of outrageous fortune.

John Robinson Knockout Cup Match
Monday 18th April
Rushden A 2½ - 2½ Chess Mates A
 Bd1: Hugh Murphy (198) ½ Chris Ross

(197)
 Bd2: James Gardner (159) 0-1 Frank Kamau (167)
 Bd3: Nik Purver (139) 0-1 Eva Ressel (137)
 Bd4: Sajan Ganger (130) 1-0 Jefta Jawi (U)
 Bd5: Alan Lewis (131) 1-0 Dave Curran (117)
 Rushden knocked out on the tiebreak rule!

It was fascinating to watch Hugh Murphy and Chris Ross go through the post-match analysis of their game. This is normally undertaken on boards set out away from the match room. Chris is an exceptional player who despite blindness plays at the highest level of the game. In this instance

Hugh also demonstrated his ability to visualise the game and they carried out their analysis without a board and pieces whilst stood at the bar enjoying a well earned drink. I have only seen this ability demonstrated once before and that was when world champion Magnus Carlsen took on and beat three opponents while blindfolded. The official record held for most games played in a simultaneous blindfold exhibition was set in 1947 by Miguel Najdorf. Najdorf played against 45 opponents in São Paulo winning 39, drawing four and losing two games.

Chris has been selected to take part in the 16th Blind Chess Olympiad being held in Azerbaijan this September. I look forward to reporting on his progress later in the year.

Chess is a game for people of all abilities, disabilities, and lifestyles. Rushden Chess Club loves welcoming new members, so do come along to a meeting if you're interested in playing chess in a very friendly environment. The club opens most Mondays from 6pm for Junior players – for details please call the Club Secretary on 01933 625767, or visit the club website <http://rushdenchessclub.com> and for the NCA (County Association) it's <http://www.norchess.lloydbunday.co.uk>.

What can we do for you?

- Windows ■ Casements
- Vertical & Horizontal Sliding Windows
- Doors ■ Fly Screens
- Residential ■ Folding Sliding Doors
- Stable Doors ■ Conservatories/Orangeries
- Secondary Glazing



Recommendations are so important to us, 68% of our business is recommended to us by our customers, local people just like you, so if you've not used us before but are thinking of having some home improvements carried out, ask around, you are sure to know someone that is pleased with our work.



Tradell
Oundle Heritage
Windows Ltd

PVCU, Aluminium, Timber,
 Steel. All in styles and
 colours to suit your home

Give us a call now on:

01832
275790

Your local family business: Tradell, Barnwell, PE8 5PL Fax: 01832 275786