

26th April 2014

[www.nenevalleynews.co.uk](http://www.nenevalleynews.co.uk)



[facebook.com/NeneValleyNews](https://facebook.com/NeneValleyNews)

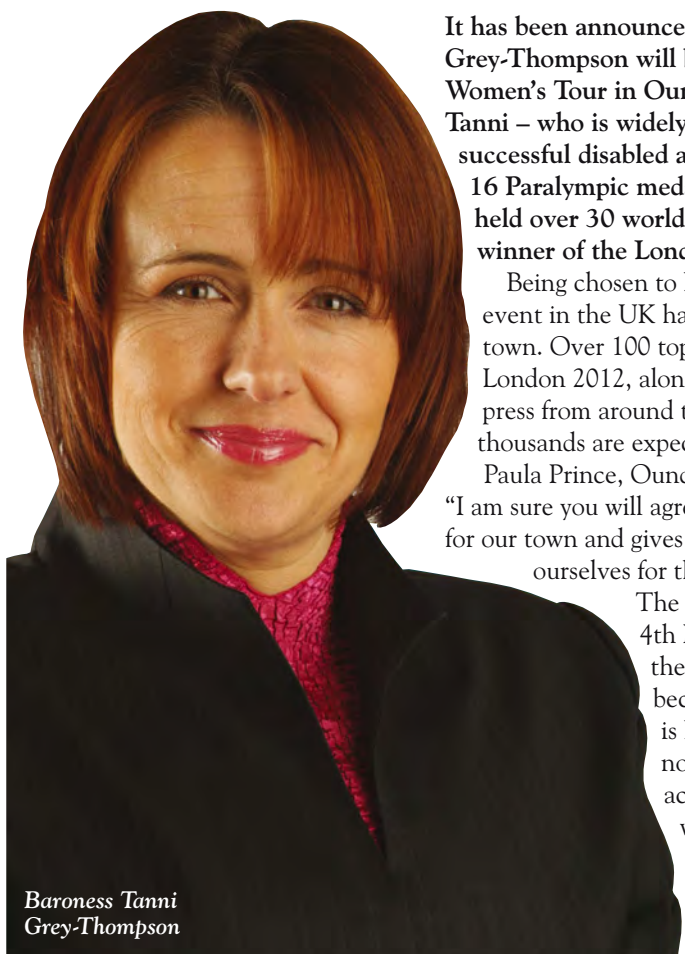


[@NeneValleyNews](https://twitter.com/NeneValleyNews)



**Souvenir Programme**  
**Grand Depart**  
**Oundle**

## Oundle welcomes Tanni Grey-Thompson for Grand Depart



Baroness Tanni Grey-Thompson

It has been announced that Baroness Tanni Grey-Thompson will be starting the FriendsLife Women's Tour in Oundle on Wednesday 7th May. Tanni – who is widely regarded as one of the most successful disabled athletes in the UK – has won 16 Paralympic medals including 11 golds and has held over 30 world records. She is also a six times winner of the London Marathon.

Being chosen to host the inaugural women's event in the UK has been a major boost for the town. Over 100 top riders, including stars of London 2012, along with their support teams, press from around the world and crowds of many thousands are expected.

Paula Prince, Oundle's Town Centre Manager said: "I am sure you will agree that this is wonderful news for our town and gives us a huge chance to showcase ourselves for the future."

The build-up will begin on Sunday 4th May and will continue for the next three days with Oundle becoming a hive of activity. It is hoped that the four days will not only be a celebration of the achievements of the professional women riders but also the opportunity to leave a legacy of fitness and wellness amongst the local community.

A packed programme of events is planned leading up to the Grand Depart when, over a course of 58 miles, the riders will cycle the first stage through the Northamptonshire countryside before arriving in Northampton.

In this issue of Nene Valley News we have included a four-page special souvenir programme to the FriendsLife Women's Tour. It contains a diary of events for the lead-up to the Grand Depart, as well as rider and team details, spectator tips and details of the route from the start in the Market Place.



### Inside your souvenir programme

- Meet the riders
- Oundle four-day event programme
- Road closures
- A look at local businesses

#### NEWS IN BRIEF

**New charity created to support county libraries**

A new trust aimed at supporting Northamptonshire's public library service has been launched.

The Charity Commission has approved the registration of the Northamptonshire Libraries Trust, which has been created as part of Northamptonshire County Council's strategy to safeguard the long-term future of libraries in the county.

Money raised through the Trust, which will also be known as the LibraryPlus Trust, will be allocated through grants to support specific projects, to purchase new equipment or enhance the facilities on offer.

The Trust's stated purpose is 'to support Northamptonshire public libraries and in doing so, enhance opportunities for the people of Northamptonshire to achieve prosperity and wellbeing for themselves and their communities.'

The Trust is one of the first new library charitable incorporated organisations to be set up under legislation introduced by the government last year.

We want to hear from you, so please submit your news story or event at [www.nenevalleynews.co.uk](http://www.nenevalleynews.co.uk)

## Laxton Junior School in Oundle

Independent Day School  
Co-educational  
aged from 4 - 11 years

[www.laxtonjunior.org.uk](http://www.laxtonjunior.org.uk)



## OPEN MORNING

Monday 5th May  
Bank Holiday  
9.30 to 11.30 a.m.

Enjoy a tour with our greatest ambassadors - our children

**01832 277159**

[lat@laxtonjunior.org.uk](mailto:lat@laxtonjunior.org.uk)



## Nene Valley News bulk delivery points

In rural village locations it has been cost prohibitive to continue the Royal Mail delivery of Nene Valley News.

Copies of Nene Valley News are available from the following drop points; if your village is not mentioned and you know of a suitable location for a delivery, please contact us at [distribution@nenevalleynews.co.uk](mailto:distribution@nenevalleynews.co.uk) with the details. We are keen to cover as many of the small communities as possible. Alternatively an e-version can be downloaded at [www.nenevalleynews.co.uk](http://www.nenevalleynews.co.uk) or a posted subscription is available at a cost of £39 per annum.

- **Aldwincle** - Peartree Farm Tearooms, Peartree Farm, Aldwincle
- **Apethorpe** - The Kings Head, Apethorpe
- **Barnwell** - Barn Garden Centre, Barnwell Road, Oundle; Barnwell Post Office, Church Lane, Barnwell
- **Brigstock** - The Green Dragon, 1 Hall Hill, Brigstock
- **Bulwick** - The Pickled Village, Main Street, Bulwick
- **Collyweston** - Collyweston Community Shop, 21 High Street, Collyweston
- **Duddington** - The Royal Oak, High Street, Duddington
- **Easton on the Hill** - Easton Stores and News, 3 Westfield, Easton on the Hill
- **Fotheringhay** - The Falcon Pub, Fotheringhay, Fotheringhay
- **Harringworth** - The White Swan, Seaton Road, Harringworth
- **Higham Ferrers** - Higham Council Offices, Market Square, Higham Ferrers
- **Kings Cliffe** - Kings Cliffe Costcutter, 47 West Street, Kings Cliffe
- **Lowick** - The Snooty Fox, 16 Main Street, Lowick
- **Nassington** - The Queens Head, Station Road, Nassington
- **Oundle** - Waitrose Oundle, 66 East Road, Oundle; Oundle Library, Glapthorn Road, Oundle
- **Polebrook** - Olive Grove Nursery, Oundle Road, Polebrook; The Kings Arms, Kings Arms Lane, Polebrook
- **Raunds** - Raunds Town Council, The Hall, Thorpe Street, Raunds
- **Rushden** - Waitrose Rushden, Crown Park Ind Estate, Rushden; Rushden Town Council, Rushden Hall, Rushden; Rushden Library, Rushden Centre, Newton Road, Rushden
- **Sudborough** - The Vane Arms, Main Street, Sudborough
- **Thorpe Waterville** - The Fox Inn, Thorpe Waterville
- **Titchmarsh** - Titchmarsh Village Shop, 1 The Green, Titchmarsh
- **Thrapston** - East Northamptonshire Council, Cedar Drive, Thrapston
- **Wadenhoe** - The Kings Head, Church Street, Wadenhoe
- **Wakerley** - Barrowden and Wakerley Community Shop, Wakerley Road, Barrowden
- **Warmington** - The Red Lion, Peterborough Road, Warmington
- **Woodford** - Duke's Arms, 83 High Street, Woodford
- **Yarwell** - The Angel Inn, 59 Main Street, Yarwell

# Giraffe racing for the blind

The Rotaract Club of Rushden is organising its Giraffe Race in aid of Wellingborough and District Talking Newspapers ([www.wdtn.org.uk](http://www.wdtn.org.uk)), a Wellingborough based charity that provides local news in audible format along with the required playing equipment to blind and partially sighted people in the district from Earls Barton, thorough Wellingborough, Ichester, Rushden, Higham Ferrers to Raunds and all smaller villages in between. The charity is run entirely by volunteers and receives no external funding, so relies on donations and the support of other organisations.

The Rotaract Club is made up of 18 to 30 year olds from the area and will be running its well established Giraffe Race event at the Carriage House in Higham Ferrers off the town square, where parking is available. The event will take place on Saturday 10th May with doors opening

at 7pm and races starting at 7:30pm. There is no entry fee and bets on any of the six giraffes that will be running in six races throughout the evening can be placed from £1. The club is also looking for sponsors for the races, which costs £10. Sponsoring a race means you get to name the race and the giraffes if you so wish.

The Club is grateful to the Carriage House for allowing the event to run free of charge, maximising the amount raised for the charity.

You can simply turn up on the night but the Rotaract Club would very much appreciate it if you can let them know you are coming. Please contact Simon on 07757 386042 or email [giraffe@rushdenrotaract.org.uk](mailto:giraffe@rushdenrotaract.org.uk) to book a race sponsorship or if you require further information.

More information about the Rotaract Club of Rushden can be found at [www.RushdenRotaract.org.uk](http://www.RushdenRotaract.org.uk)

## Want to place an advert or article?

If you wish to contribute or have any comments please email [news@nenevalleynews.co.uk](mailto:news@nenevalleynews.co.uk) or call 01522 513515.

To advertise, call 01522 513515 or 01832 272299. Alternatively you can email [advertising@nenevalleynews.co.uk](mailto:advertising@nenevalleynews.co.uk)

If you are not receiving your copy of Nene Valley News, please email [distribution@km-media.co.uk](mailto:distribution@km-media.co.uk) or telephone 01522 513515

If you would like to receive this publication as a download, Nene Valley News is available online as a pdf at [www.nenevalleynews.co.uk](http://www.nenevalleynews.co.uk).

You can also subscribe to Nene Valley News for £39 per annum.

Nene Valley News is produced for Nene Valley News Ltd, registered office Unit 4, Eastwood Road, Oundle PE8 4DF, by their agents KM Media & Marketing, County House, 9 Checkpoint Court, Sadler Road, Lincoln, LN6 3PW.

### Copy dates for Nene Valley News

Publication date: Saturday 10th May  
Articles to the editor by: Wednesday 30th April

Publication date: Saturday 24th May  
Articles to the editor by: Wednesday 14th May

Nene Valley News is an independent publication produced by Nene Valley News Ltd and has no association with East Northamptonshire Council



**KM Media & Marketing**  
Your partner in publishing  
ONLINE | IN PRINT | IN DIGITAL

## Check before you buy land

If you're thinking about buying land to develop or build on, there are a number of things you should consider. Firstly, you should find out whether planning permission is likely to be granted for what you want to do. East Northamptonshire Council offers a pre-application advice service to help you establish this and whether the land you're interested in has development potential. By using this service, you can check if you are on the right lines before you apply, which could save you time and money.

Some land has development potential whilst other land has very limited prospects. For example, land which is in the open countryside or is public open space has very limited potential for development.

There may be restrictions on use imposed on the title to the property by a former owner or other third party. You may therefore want to check if the land is subject to a covenant which might limit what you can do with it and take legal advice if it is. This is entirely separate from the planning process and East Northamptonshire Council cannot take such restrictions into account when advising on the planning merits of an application.

Find out more about the service and charges for pre-application advice on certain proposals at [www.east-northamptonshire.gov.uk/preapp](http://www.east-northamptonshire.gov.uk/preapp)

## Woodford needs you!

Woodford Diamond Jubilee Committee is seeking help from a local builder to generously offer their services to build a plinth on the village green to support the Woodford village sign.

Woodford villagers have raised funds via several village events to commission and purchase a village sign. We have the design specifications and the materials to build a plinth to support it but our plan to have a local retired builder complete the build have been undermined by regulations that require the builder to have £500,000 public liability insurance. This will require funds we do not have.

If you have the credentials and are willing to help us with our plight can you please get in touch – Woodford Diamond Jubilee Committee

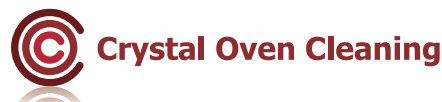
Contact: Judith 07546261860 or Mike 07894272534



**Monday and Friday morning offer**  
**£15 for 18 holes of golf and a bar meal**



Visit our new website at [www.rushdengolfclub.org](http://www.rushdengolfclub.org)  
Contact Ellie Williams on 01933 418511  
Rushden Golf Club, Kimbolton Road, Chelveston, Wellingborough, Northamptonshire NN9 6AN



• **Don't throw money away on a new oven**

• **Transform your kitchen, give your oven a facelift - professional cleans start from just £45!**

• **1000s of satisfied customers. Family owned business**

Direct (Lo Call): 0845 680 6836  
Office: 01832 734 076  
[www.crystalovencleaning.co.uk](http://www.crystalovencleaning.co.uk)

Member of the Association of Approved Oven Cleaners



46 Cartrill Street, Raunds, NN9 6ER



**Free 15 hours or 11 hours per week**

**Free Entitlement:**  
**Aged 3+**  
**11 hrs 52 weeks**  
**15 hrs 38 weeks**



Worth over £2000 per year  
Reserve your place for next term

01933 624500

[www.raunds.org](http://www.raunds.org)

Come & visit us • Open 8 till 6 • Children from 2 years

**Open Day**  
**7th June 10-12**

Are you looking for childcare for September 2014?

Come and have a look at what we have to offer at our open morning and speak to our wonderful staff.





# Retired Ringstead residents rake in rubbish and replace wrecked railings

In addition to Tidy Days organised by Ringstead Community Group a small group of retired Ringstead residents have for the last 12 months litter-picked the four miles of roads out of the village to the parish boundary. A total of 260 black sacks have been filled during this time.

The site of the former Ringstead & Addington railway station, used as a parking area to access Stanwick Lakes Trail, was not on the normal litter-picking run and a large amount of discarded rubbish had accumulated during the past year. The rubbish in 20 metres of ditch filled 12 black sacks and larger items such as bike wheels were also recovered. Central England Co-op provided smaller bags into which the rubbish was initially

collected and East Northamptonshire Council have removed all of the sacks. Following vehicle damage to railings at

the Peace Park, three sections have also been replaced by the same team. Residents of Ringstead continue in

their efforts to improve the appearance of the village and would encourage other villages to set up litter-picking teams.

Ringstead residents replace fence



## Help save lives on the River Nene

Young people in East Northamptonshire are invited to enter a competition which could help save lives on the River Nene.

East Northamptonshire Council is working with the Environment Agency and Northamptonshire County Council to prevent the misuse and vandalism of life-saving equipment at locks and weirs. This equipment costs thousands of pounds and theft or vandalism of it puts lives in danger.

The competition, for under 18s, is to design a message and/or a picture that will make a vandal or thief think twice before interfering with this essential life-saving equipment. The six winners will have their design

published and used on lifebelts along the River Nene in East Northamptonshire. They will also each win a £25 Amazon voucher.

Lucy Foster of East Northamptonshire Council says: "This is a great opportunity to play a part in preventing damage to this invaluable equipment and potentially saving lives. Your message or picture could play a key role in encouraging responsible behaviour on our waterways."

Sue Cant of the Environment Agency adds: "Drowning is the third highest cause of death in children and claims the lives of more than 400 people in the UK each year.

"This competition will instil in those taking part

an understanding of how to enjoy our inland waterways safely and, in particular, the importance of respecting essential life-saving equipment so that it is there when it is needed in an emergency. Pupils should feel proud that their winning designs will help to pass on this information in an innovative and imaginative way."

The challenge is to design something 26cm circular that will fit in the centre of a lifebelt. Please consider the colours of the life-saving equipment – orange and white. Entrants are advised to use contrasting colours and remember to include their name, age, and contact details on the reverse side.

Email entries to [lfoster@east-northamptonshire.gov](mailto:lfoster@east-northamptonshire.gov).

uk or post to Lucy Foster, Community Partnerships Team, East Northamptonshire Council, Cedar Drive, Thrapston, NN14 4LZ. The deadline for entries is 5pm on 16th May 2014.

The winning designs will be announced during the week commencing 26th May and unveiled on 20th June ready for National Drowning Prevention Week.

This is the first competition of its kind in the UK and if the scheme is successful, it may be rolled out nationally.

For queries about the competition, call Lucy Foster on 01832 742268 (Wed-Fri). For more information on Drowning Prevention Week, please visit [www.drowningpreventionweek.org.uk](http://www.drowningpreventionweek.org.uk)

### THE LARGEST SELECTION OF SHOES IN THE AREA



## DB Factory SHOE SHOP

We stock Men's, Ladies' and Children's styles

Marco Tozzi, Heavenly Feet, Earth Spirit, Dr Keller, Natureform and many other leading brands stocked!

Opening times: Monday to Saturday 10am-5pm Sunday 10am-4pm

Address: DB Shoes Ltd, 19-21 Irchester Road, Rushden, Northants, NN10 9XF

[www.dbfactoryshop.co.uk](http://www.dbfactoryshop.co.uk)

### WIDE FEET?

Then why not VISIT OUR SPECIALIST SHOE FITTING CENTRE

where our team of experienced shoe fitters will help you choose the style of footwear that is suitable for your needs!

Telephone: 01933 410 305

Opening times: Monday to Saturday 10am-4pm

[www.widerfitshoes.co.uk](http://www.widerfitshoes.co.uk)

Plus get an additional

**10% OFF**  
(excluding sale items)

when you bring this advert and quote code NV1514. Offer valid in both shops until 31st July 2014

### DOES YOUR KITCHEN NEED UPDATING?

We offer replacement or re-facing options to suit your budget!

Free consultation & clear written quotes!

Call RAY at ALBION on 07842 80 68 68

References from very happy customers, ALWAYS!



### LATE DEAL

Potters – Hopton on Sea – Norfolk  
9th – 12th May, 4 Days, Full Board  
Price £279 per person

If you are looking for the perfect weekend away, then look no further. Fantastic entertainment throughout the weekend that includes Chas & Dave Live on Sunday Evening. All meals included from your first arrival dinner to breakfast on departure day, whether it be a hearty breakfast, a lovely lunch, a three-course dinner, or hot midnight dish. Late bars open till the small hours and full use of sporting facilities. Price quoted is for standard bungalows. Upgrades available to bungalow plus, for £10 per person supplement.

### Days Out with Lunch

Wednesday 11th June – Potteries £47.50

Start with tea or coffee at our first stop, then take a guided tour around the Staffordshire Moorlands. Stop for lunch, then visit the Potteries Museum and Art Gallery. Price includes tea/coffee and two-course carvery lunch.

### 2 Day Breaks

7th – 8th June Mystery Weekend –

£95 per person sharing, £109 per single traveller

Sit back and let the driver take you to your destination. Mystery Hotel, Half Board basis includes attraction/entry fee

1st – 2nd June London Break – £89 per person sharing, £109 per single traveller

Enjoy one night in London on Bed & Breakfast basis. Shopping, show, or attractions – do as you please. Staying at the excellent Guoman Towers Hotel, Tower Bridge. Overlooking Thames, Tower of London & St Katherine Docks.

For all our Holidays & Day Trips please ring for Brochure

01933 624497 (Raunds) or

01832 720524 (Wadenhoe)

Local Pick ups Kettering, Corby, Wellingborough, Rushden, Higham Ferrers, Raunds, Thrapston

[www.buckitt-tours.com](http://www.buckitt-tours.com)

### WHITEHALL WINDOWS LTD



Supply only or supply and fit service – Trade welcome

Windows • Vertical Sliding Windows  
Bi-Fold Doors • Doors – Residential, French  
Doors & Inline-Sliders • Fascias, Soffits & Guttering • Decking • Extensions



Call now on our freephone number **0800 458 1521**

Office 8, Elm Court, Thrapston, Nr Kettering, Northants, NN14 4LG

Tel: 01832 737919

Factory Address: c/o Carr Brothers Ltd, Upper Higham Lane, Higham Ferrers, Northants NN10 0SU

Tel: 07753 911089

Email: [white\\_hall@uwclub.net](mailto:white_hall@uwclub.net)

Website: [www.whitehallwindowsltd.co.uk](http://www.whitehallwindowsltd.co.uk)

**certass**  
Self Assessment and Auditing Made Easy





# Oundle Party at the Wharf

It's back in town! Oundle International Festival's traditional outdoor concert returns this year, but this time the party is down at the Wharf. Where better to take a group of friends, a picnic and enjoy a warm summer's evening than at the waterfront near the centre of town?

Headlining the evening will be Ben

Smith, described by Time Out as 'one of the finest guitarists in Britain today.' Covering classics across the spectrum from blues to rock to swing, he'll sing something to get everyone on the dancefloor by the end of the night.

Getting the party started will be a line-up of local support bands in collaboration

with Prince William School, including Heroes and Cons, a Green Day tribute band and the Steradents, with a mixture of 70s and 80s songs. The concert will help to raise funds for a primary school in the Mbeqweni township in South Africa, as a group of Year 11 students from Prince William are visiting Mbeqweni this summer and will be working with the children at the school.

You will have a chance to buy your picnic ingredients from the Oundle Food Festival, taking place in Oundle marketplace the week before on Saturday 5th July. There will be a stack of street vendors on the night vying to tempt you with culinary delights such as Moroccan spiced wraps, paella, soups, bison, venison, handmade burgers, cakes, cookies and much, much more. The sponsors of the event are Waitrose and Nene Valley Brewery.

Gates open at 5pm on Saturday 12th July. Arrive early to pick your spot and guarantee the best view. To make the evening an even grander affair, you can

book a canopy pitch to give you even more room for a stylish picnic – but remember to book early to avoid disappointment, and arrive from 11am to set up your pitch.

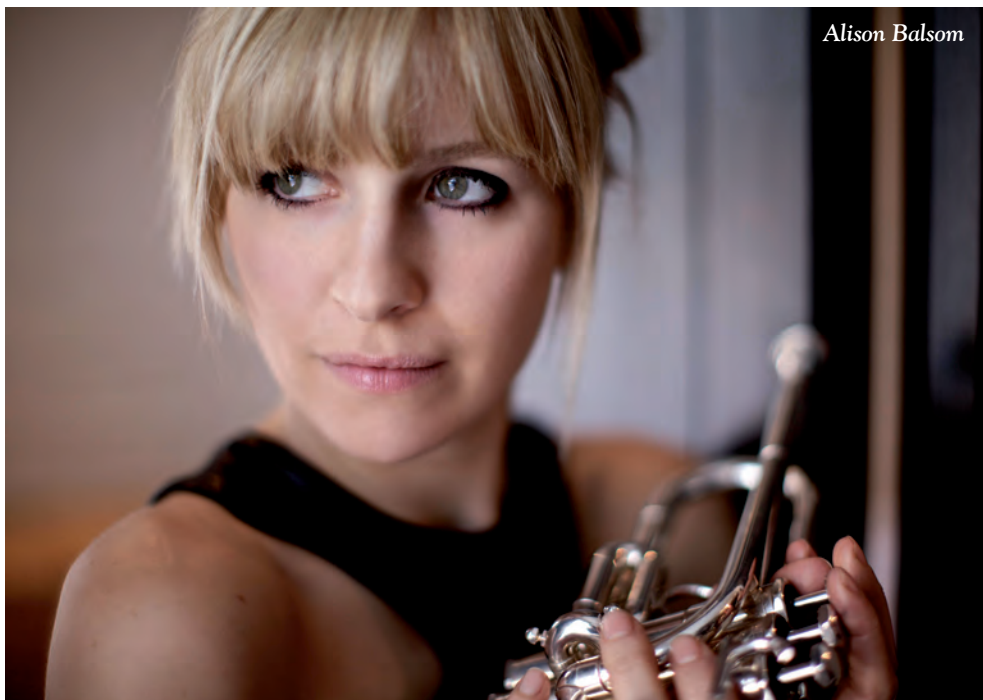
## Ticket Prices

Adult: £15 (if booked in advance)  
U18s: £10 (if booked in advance)  
U12s: Attend for FREE, but please book!

On the door (if available):  
Adult: £20 / U18s: £15  
Canopy Site: £20 (site only)  
If you book a Canopy ticket you are still required to buy individual concert tickets.

Tickets will be on sale from Easter. For more information, visit the website or phone the box office.

[www.oundlefestival.org.uk](http://www.oundlefestival.org.uk)  
Box Office: 01832 274734  
4 New Street, Oundle,  
Northamptonshire, PE8 4ED



Alison Balsom



Mina Middleton

## Register to vote to have your say in the European election 2014

Residents in East Northamptonshire Council are reminded to register to vote so they can have their say in the European election on 22nd May.

Those not yet registered to vote must apply by 6th May 2014 by

- calling 01832 742119 for an application form
- dropping into one of our three customer service centres:
- Cedar Drive, Thrapston, NN14 4LZ
- Newton Road, Rushden, NN10 0PT
- 4 New Street, Oundle, PE8 4ED

Once you have registered to vote, you will receive a polling card which states where you should go to vote on 22nd May.

Voters who used to go to Deenethorpe will now go to Deene Village Hall. Please check your polling card so you go to the right place.

You can request a postal vote which is particularly useful if you cannot get to a polling station – this must be with us by 7th May – or you can ask for a proxy vote which means that you appoint someone you trust to vote on your behalf. A request for a proxy vote must be with us by 14th May.

If you have any questions about electoral registration, email [elections@east-northamptonshire.gov.uk](mailto:elections@east-northamptonshire.gov.uk) or call 01832 742119.

Results of the election will be published on our website at [www.east-northamptonshire.gov.uk](http://www.east-northamptonshire.gov.uk) and in the local press.

To find out more about the European election, visit [www.elections2014.eu/en](http://www.elections2014.eu/en)



## From the East Northamptonshire Council Chairman Pam Whiting

April saw the return of the Wellingborough Gang Show at The Castle Theatre. We attended the Wednesday performance along with the Mayor and Mayoress of Wellingborough, the Mayor and Mayoress of Daventry, the Mayor of Raunds and the Chairman and Consort of Northamptonshire County Council. The show was first class, full of comedy, singing and dancing. The cast deserved all the praise they received; well done to all those involved.

On 4th April we visited Cambridgeshire for a concert by the Whittlesea Wind Ensemble. The band, formed two years ago, performed music from the shows, classical pieces and waltzes from Strauss. Whittlesea also held a duck race on Easter Monday. I

would like to have seen the 500 numbered plastic ducks pumped down the river by the Fire Brigade.

Many attended the Rushden Windmill Band concert at the Heritage Church, hosted by the Mayor and Mayoress of Higham Ferrers. The venue was highly praised by the conductor for its good acoustics. The band performed with the Northampton Male Voice Choir which really got us tapping our feet. A very enjoyable evening.

I am looking forward to visiting Kings Cliffe in the next few weeks to see the Heritage Centre that has now been completed. Back in December I was able to present Kings Cliffe with a grant from East Northamptonshire Council to carry out the work and I am really looking forward to seeing the results.

## Local horse wins national Performance Horse Awards

A pure bred Arabian, Binley Prince Salim, has won the Arab Horse Society's annual Performance Horse Awards for 2013.

Owned by Gadebrook Arabian Stud near Oundle, the nine-year old white stallion gained the title through his many successes in British Dressage and 75-mile endurance races.

The year-long competition attracts over 100 entries and is keenly fought.

Salim has also won the Eastern region Performance Horse Awards for 2013, against all breeds.

Anne Brown, owner of the stud based at Tansor Lodge Farm, has been breeding top performance horses for over 30 years, mainly for racing and endurance, including the 2005 world champion, Hachim, who completed the 100-mile race in the Dubai desert in the record time of seven hours, two minutes.

This year, Anne is President of the Arab Horse Society, so will have the dual task of presenting and receiving the Silver Salver with Salim at the Arabian Championships in the

summer! Salim's daughter Silver Sunbeam is due to foal at the end of April, so there should be double cause for celebration.



Binley Prince Salim



# Nene Valley Time Trail

Our regular feature by Janice Morris gives a flavour of the history of East Northamptonshire.

## WOODFORD MILL

The impressive limestone and ironstone building of Woodford Mill lies beside the bridge crossing the River Nene, between Ringstead and Great Addington. It is one of many watermills along the valley. There has been a watermill on the site since the eleventh century. Originally producing flour it has also been used for felting cloth, for paper making and grinding bones for fertilisers.

Today there are lakes opposite the Mill, but in the past there were expanses of meadows. Here on May Day village children would gather flowers, put them in a basket and go from door to door, singing and collecting pennies.

It was not always a tranquil scene. Even when the river was made navigable in the eighteenth century, floods would frequently swirl around the Mill. In 1845 the railway from Northampton to Peterborough opened and steam trains passed within 100 metres of the Mill. This was followed by the quarrying of ironstone beside the road to Great Addington, with tramways running from the quarries down to the main rail track. Gravel extraction in the twentieth century led to the

biggest change in the surrounding landscape and now Kinewell Lake and the fishing lake cover the area.

The Mill was once part of the possessions of Croyland (Crowland) Abbey. After Henry VIII dissolved the monasteries it had a number of owners and the Mill's fortunes fluctuated. In 1835 the miller drowned and a few years later the owner, Henry Shuttleworth, became bankrupt. Soon after this misfortune his wife died and within six months Henry was also dead, leaving six children as orphans. However, the last miller lived almost until the age of 100.

For five years in the mid-twentieth century the Mill became a guest house and licensed restaurant before reverting to residential use. The two water wheels were no longer used and deteriorated. Then in 2005 Clive and Emily Hodgson-Jones purchased the Mill and began its restoration and conversion to flats, holiday flats and tea room. The water wheels now drive generators to produce electricity. Very recently, another phase in the Mill's long history has begun with the extension of its kitchen and eating area to provide a restaurant.



## Rising stars at Raunds Music Festival

Raunds Music Festival has an outstanding reputation for spotting up and coming acts and this year is no exception. Over the holiday weekend of 2nd – 4th May, music fans will have the opportunity to see five great young acts that are really causing a stir in musical circles: a folk supergroup, The Gavin Davenport Band, 3 Daft Monkeys, singer-songwriter Fabian Holland, The Teacups and local rising stars on the ceilidh scene, Tautas Roks.

Also featured are international festival favourites Grace Notes with Maggie Boyle, Doughboy Zydecadun, The Roberts & Exall Jazz Quintet and performances from talented musicians drawn from the Raunds community. These include the Temperance

Band, Community Choir, Ukulele Orchestra and Raunds Manor School.

As if that's not enough there are song and tune sessions, traditional dancers on Raunds Square and one of the best festival real ale bars in the country.

Bob Fisher, festival chairman commented: "This small festival really punches above its weight, not only providing high quality entertainment for East Northants residents but also attracting music enthusiasts from across the country. Full Festival Saver tickets represent incredible value for money and a chance to see outstanding acts in the intimate setting of the Saxon Hall."

More information is available on the festival website [www.raundsfestival.com](http://www.raundsfestival.com)

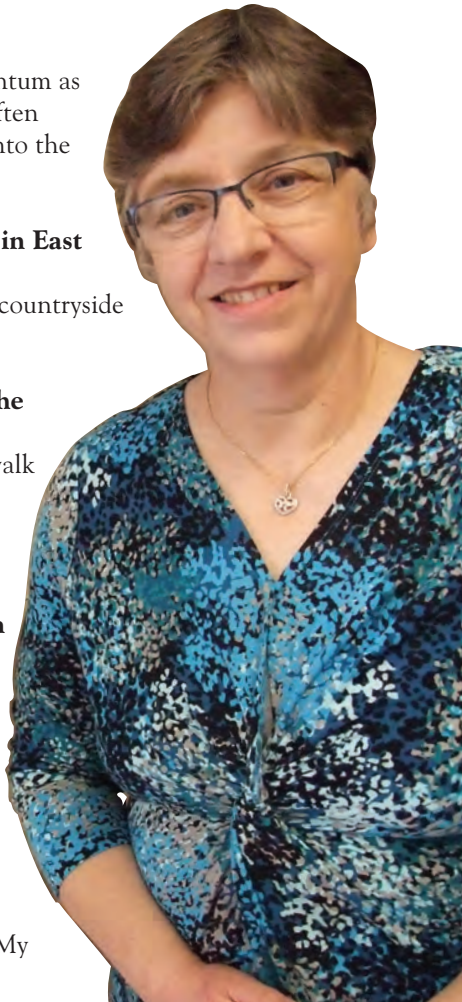
## My day in East Northants

Name: Christine Twell

Organisation: NeneView Dairy

Job title: Artisan Cheesemaker

- **How long have you lived and worked in East Northamptonshire?**  
I have lived in East Northamptonshire all my life but have worked here for three years since retiring from teaching.
- **How would you describe a typical day?**  
A typical day begins calmly but gains momentum as the cheese develops. I start at 7.00am and often finish at 6.30pm once the cheese has gone into the press.
- **What do you enjoy most about working in East Northamptonshire?**  
Being able to spend my time working in the countryside and rural areas of East Northamptonshire.
- **What is your favourite place to visit in the district?**  
I love visiting Stanwick Lakes. It is easy to walk there and I love sitting in the visitor centre with a coffee, looking out over the lake watching the wide variety of birds.
- **What does East Northamptonshire mean to you?**  
Home. I can't imagine living anywhere else.
- **Is there anything which would improve your life in the district?**  
Improving some of the roads e.g. Thrapston to Peterborough.
- **What is your favourite food and drink?**  
It is a job to beat a tender steak with chips. My favourite drink is tea.



## Ask your MP

Surgeries are open to members of the public who need information and advice.

MP Peter Bone holds weekly Friday surgeries in his Wellingborough office, 21 High Street NN8 4JZ. Fourth Friday of each month, surgery held at St Mary's Church Hall, Rushden. Make an appointment by calling 01933 279343. You can email Peter Bone at [bonep@parliament.uk](mailto:bonep@parliament.uk)

Andy Sawford MP will hold surgeries in East Northamptonshire on the fourth Friday of each month at:

- Irthlingborough Children's Centre, 10am-11am (March, May, July)
- Raunds Library, 11.30am-12.30pm (March, May, July)
- Thrapston Library, 10am-11am (April, June)
- Number 1, St Osyth's Lane, Oundle, 11.30am-12.30pm (April, June)

His constituency office can be contacted on 01536 264194



### THE BRIDGE HOTEL

#### New Beginnings at The Bridge Hotel

- New Chef
- New Dinner & Lounge Menu
- Revamped Afternoon Tea
- Take advantage of our Special Offers at the moment such as Cream Tea and Lunch Time Desserts

Call 01832 732128 or email [info@thebridge-hotel.com](mailto:info@thebridge-hotel.com)







Bedford College  
Learning Centre  
Rushden

## Computer training for everyone At Rushden Learning Centre

- Microsoft Office 2010
- Beginner to advanced levels
- Fully accredited and OCR certificated courses
- **Full Course £20.00 or FREE** to those who are unemployed, seeking work and claiming eligible benefits.

Drop in or call us today on **01933 358684**

### Opening Hours:

**Monday to Thursday 10am - 8pm**

**Friday 10am - 4pm**

**Saturday 9am - 1pm**

Rushden Learning Centre  
Rectory Road, Rushden, Northants  
NN10 0PW

[www.thelearningcentres.co.uk](http://www.thelearningcentres.co.uk)



**Open Week**  
**12th - 17th May 2014**



- ▶ Paving
- ▶ Block Paving
- ▶ Brickwork
- ▶ Fencing
- ▶ Decking
- ▶ Turfing
- ▶ Pergolas and Bespoke Garden Structures
- ▶ Ponds and Water Features
- ▶ Sleepers and Raised Beds
- ▶ Planting Schemes
- ▶ Land Drainage
- ▶ Lighting



## JOHNSON'S Landscape Design and Construction

Johnson's Landscape Design and Construction is based in Northamptonshire. Perfectly situated within easy access of the M1, A1 and A14 allowing us to cover Northamptonshire and the surrounding counties with ease.

We offer a variety of different services to suit all your needs from small maintenance projects to full scale design and build Makeovers. With over 15 years of experience within the Professional Landscaping Industry the highest of standards in Creativity, Quality, Craftsmanship, Professionalism and Customer care can be assured.

Contact:

Matthew Johnson

Tel: 01933389002

Tel: 07908210820

[www.johnsonslandscapeandconstruction.com](http://www.johnsonslandscapeandconstruction.com)



[www.colemans-online.co.uk](http://www.colemans-online.co.uk)

Unit 6, Brindley Close,  
Rushden, NN10 6EN.  
T: 01933 355530



1000's OF ART, CRAFT & HOBBY  
SUPPLIES ALL UNDER ONE ROOF!



FREE DEMONSTRATIONS!

SAVE  
20%!

Off non-offer items



FREE PARKING

### 1000's OF CRAFT & HOBBY SUPPLIES - ALL AT GREAT PRICES & ALL UNDER ONE ROOF!

At Rushden, Northants our 5000 sq. foot warehouse has 1000's of craft, card making, beading, baking & cake decorating supplies - **all at great prices!**

On the **first Saturday of each month** we hold one of our famous **Big Craft Days**. We have simultaneous craft demonstrations by professional demonstrators which are continuous between 10.00am and 4.00pm. There are lots of **special offers** and **free refreshments**. We have plenty of helpful and knowledgeable staff on hand to give you advice on all the latest products. We open for shopping at 8.30am.

Our next Big Craft Day is on **Saturday 3rd May** & will feature the following demonstrations:-

**Paul Church** : Cardmaking with dies & stamps from Sue Wilson's new range - **NEW!**

**Kay Rutter** : will be demonstrating her unique embossing boards & accompanying project books

**Julie Eaves** : Cake Decorating with a new range of icing moulds from Katie Sue Designs - **NEW!**

**Bonnie McGough** : how to create Fimo characters & beautiful jewellery

**Trish Ablett** : will be using our new fabric designs to make fabulous cushion covers - **NEW!**

#### Some comments from our visitors' book:-

My wife gets to come here & I get to play golf! - Don't close! - P.S., Northants

A brilliant place with even better bargains - S.P., Northants

Inspiring! - P.G. Swindon

Superb selection and excellent service - J.H., Crick

Unbelievable - such a choice! - M.S., Northants

Wickedly tempting! - D.C., Enfield

Heaven!, staffed by Angels! - F.L., Moreton In Marsh

As usual, a great day, lovely friendly staff & great demonstrations - S.Y., Wigston

Just what I wanted & all under one roof! - P.H. Northants

## Craft workshops

Our Craft Workshops are great value at £7.50 to £30.00 per session!

Unless otherwise stated, this includes refreshments plus all the equipment and materials required for your chosen project.

There are over 70 Workshops to choose from & all are held at the Craft Warehouse in an informal, fun atmosphere.



To book, check availability or to request a leaflet detailing the dates and content of our workshops please tel: 01933 355530, ask at any Colemans branch or look online at [www.colemans-online.co.uk](http://www.colemans-online.co.uk)

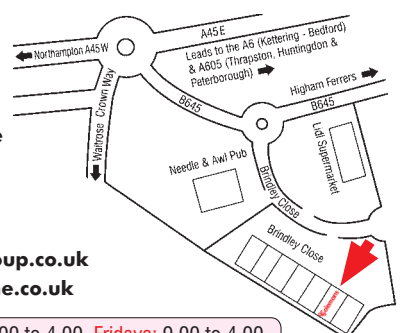
Where To  
Find Us

Unit 6 Brindley Close  
Rushden  
Northants  
NN10 6EN

T: 01933 355530

E: [craft@colemangroup.co.uk](mailto:craft@colemangroup.co.uk)

[www.colemans-online.co.uk](http://www.colemans-online.co.uk)



Thursdays: 9.00 to 4.00  
Fridays: 9.00 to 4.00  
Saturdays: 8.30 to 4.00  
Sundays: 10.00 to 4.00





# FriendsLife Women's Tour

The Women's Tour is Britain's first International level stage race for women in the UK, taking place for the first time from 7th to 11th May 2014. One hundred and two of the best female riders, including past and current Olympic medallists and World Champions, from across the world will be representing 17 trade and national teams. Spearheaded by top British riders, plus the world's top professional teams, the event is ranked at the 2.1 level by the UCI, the sport's governing body, putting it alongside the Ladies Tour of Qatar, Giro Rosa and La Route de France, as one of the world's top ranked multi-day races for women.

The event will be televised with a one-hour highlights programme being shown at the end of each day on ITV4. The whole event is a family friendly cycling festival with a focus on active lifestyles. The organisers are SweetSpot, who also organise the Tour of Britain, the Tour Series, the Tour Ride and Ride London.



Celebrating victory

## THE ROUTE

The Women's Tour will consist of five point-to-point road stages in the East of England, beginning in Oundle in Northamptonshire and finishing five days later in Bury St Edmunds. Each stage is approximately 100kms (60 miles) long and will take around three hours to complete. Along the way stages will take place in Northamptonshire, Leicestershire, Bedfordshire, Hertfordshire, Essex and Suffolk.

Stage 1	Wednesday 7th May	Oundle to Northampton
Stage 2	Thursday 8th May	Hinckley to Bedford
Stage 3	Friday 9th May	Felixstowe to Clacton
Stage 4	Saturday 10th May	Cheshunt to Welwyn Garden City
Stage 5	Sunday 11th May	Harwich to Bury St Edmunds

## THE TEAMS

Eleven of the world's top 14 professional women's teams will race in a star-studded field. Joining the already confirmed Marianne Vos and her Rabo Liv team will be the likes of Orica – AIS, Boels Dolmans, Specialized Lululemon and the Wiggle Honda team of British Olympians Laura Trott, Joanna Rowsell and Dani King.

There are 16 teams competing in the Friends Life Women's Tour. In total teams from 10 countries will take part. The full list is:

Astana Bepink Women's Team (Ita)  
Boels Dolmans Cycling Team (Ned)  
Estado de Mexico Faren (Mex)  
Great Britain (GBR)  
Hitec Products (Nor)  
Lointek (Esp)  
Lotto Belisol Ladies (Bel)  
Matrix Fitness – Vulpine (GBR)  
Netherlands (Ned)  
Optum P/B Kelly Benefit Strategies (USA)  
Orica – AIS (Aus)  
Rabo Liv Women's Cycling Team (Ned)  
Specialized – Lululemon (USA)  
Switzerland (Sui)  
UnitedHealthcare Professional Cycling Team (USA)  
Wiggle Honda (GBR)

## THE GRAND DEPART – OUNDLE

Wednesday 7th May

Start Time 11.00am

Northamptonshire is very proud to be hosting stage one of the inaugural Women's Tour. This first stage will begin in the market town of Oundle and finish in the county town of Northampton.

Situated on the River Nene, the historic surroundings of Oundle will provide a stunning backdrop to the Grand Depart at the start of stage one. The ancient town has been inhabited since the Iron Age and is famous for its Georgian streetscapes and impressive limestone buildings. The market place is still well used with a busy farmers' market every month as well a regular local market which has existed since 972 AD. This pretty town is also home to a range of independent shops, coffee houses, pubs and eateries and of course, one of the largest independent schools in England. The town has a thriving cultural scene, an international music festival, a fringe festival, a music and drama festival and an all-year-round programme of literature events. Oundle town centre will be transformed for The Women's Tour, with a host of activities and events planned in the lead-up to the event and on the day itself. Thousands of people are expected to line the streets to cheer on the cyclists as they begin the race.

In the build-up to the Grand Depart, Oundle is planning a whole range of activities to celebrate the arrival of the race. See over for further details.

medal in the team pursuit and the Omnium.

Laura has also proven her strength as a road rider and for the past two years has been a guest riding for the Dutch teams Moving Ladies and Team IBIS Cycles whilst preparing for the Olympic Games.

## RESULTS:

2012 Olympic Track Champion – Omnium  
2012 Olympic Track Champion – Teams Pursuit  
2012 World Track Champion – Omnium  
2012 World Track Champion – Teams Pursuit  
2012 British National Track Champion – Teams Pursuit  
2011 European Track Champion – Omnium  
2011 European Track Champion – Teams Pursuit  
2011 European U23 Track Champion – Omnium  
2011 European U23 Track Champion – Scratch Race  
2011 European U23 Track Champion – Individual Pursuit  
2011 British U23 National Road Race Champion  
2010 European Track Champion – Teams Pursuit  
2010 British Junior Track Champion – Individual Pursuit  
2010 British Junior Track Champion 500m Time Trial

## WOMEN'S TOUR ROAD CLOSURES



Road closures in Oundle for the Women's Tour cycling event have now been finalised.

### Oundle closures

\* (Highlighted in red) Due to the Tour Party on the eve of the Women's Tour, closures will be in place from 9.30am on Tuesday 6th May until approximately 1.30pm on Wednesday 7th May. The following roads will be closed to traffic: West Street, Market Place, New Street, North Street (from the junction with Blackpot Lane to Market Place), St Osyth's Lane.

\* There will also be a secondary closure along Milton Road to accommodate a procession of the riders prior to their departure from Oundle. This will be in place from 10.30am until approximately 11.15am.

Between Oundle and Northampton there will be a rolling road closure managed by a team of police and specialist cycle race motorcyclists travelling in advance of the riders to ensure that the route is clear and safe. It is anticipated to take up to 30 minutes for the race convoy to pass any given point along the route.



Through the race



## LAURA TROTT (GBR) RIDER PROFILE

### RIDER INFORMATION:

Date of Birth: 27/04/92

Place of Birth: Harlow, Essex, United Kingdom

2013 Team: Wiggle Honda Pro Cycling

Disciplines: Track and Road Cycling

### Rider Bio:

Laura Trott was born on 24th April 1992 in Harlow, United Kingdom and has managed to make her mark on the international circuit whilst still only being 20 years of age.

Despite being born with a collapsed lung and being diagnosed with asthma, Trott has overcome these obstacles and claimed multiple titles as World Champion, European Champion and National Champion on the track.

One of her biggest career wins came in August at the London 2012 Olympic Games when she took a double gold

### Sponsors:

**Handelsbanken**  
**Waitrose Oundle**



**pumpkinprint**  
sign & display





# Supporting local business

## THE COMPLETE BUSINESS & FINANCIAL SUPPORT SERVICE

Bulley Davey is a successful, forward thinking provider of accounting, tax and business advice services. Operating through a number of local offices, we work closely within our communities to ensure the service we provide is a cost-effective, high value solution to meet all of your financial needs.

We work hard to get to know you in order to deliver timely, individual advice on how to improve your business and personal wealth. The service we provide will give you the peace of mind that you are receiving accurate advice specific to your personal objectives. Whether

advising on the efficient management of your tax affairs to create opportunities for you to minimise your tax liabilities, guiding you through the current capital gains tax legislation or completing and filing income tax returns on your behalf, the Bulley Davey team is here to assist.

We also have a number of dedicated specialist departments dealing with a range of matters such as tax planning, corporate finance, wealth management, insolvency and business recovery.

Visit our website at [www.bulleydavey.co.uk](http://www.bulleydavey.co.uk) or contact the Oundle team on 01832 273150, or email us on [bdoundle@bulleydavey.co.uk](mailto:bdoundle@bulleydavey.co.uk)

## GOLDSMITHS CHARTERED SURVEYORS

Goldsmiths Charter Surveyors and Auctioneers moved to a new purpose-built premises in September 2013 so as to further progress the development of the auction surveying and property management business. Goldsmiths have a bespoke auction service tailored to cater for clients' individual requirements. The new auction centre incorporates a large car park, stores, offices and two auction warehouses. Visit the Auction Centre on Eastwood Road or call 01832 372349

## HR FROM OUNDLE

Based in Oundle, JKR Human Resources provides Human Resources services to clients. This service can be anything from providing hands-on support with individual employment issues to supporting companies through change,

restructuring and redundancies.

In many cases the people side of a business has a direct impact on the success of an organisation – for example good customer service, high productivity, low absence rates, low disciplinary issues, high morale or motivation. So having the right HR support can help to make a difference to the profitability of a company.

JKR Human Resources prides itself on the close working relationships it has with clients. This enables us to get to know and understand the business and the people in it. It also helps us to develop tailored solutions which are unique to the business and their needs and requirements.

We work with organisations that require HR support, whether it be providing advice and support or taking on specific HR projects.

So if you would like to enquire about any assistance regarding your staff, employment issues or a free HR health check please contact: [www.jkrhumanresources.co.uk](http://www.jkrhumanresources.co.uk) or email: [Judith@jkrhumanresources.co.uk](mailto:Judith@jkrhumanresources.co.uk) telephone: Judith Rowntree 01832 273722 or 07738 286876

## OUNDLE CARPET WEAVERS

Peter Peel has over 40 years' experience within the carpet industry, as well as a vast knowledge of the last 500 years of carpet history. After starting off as a salesman for Waring & Gallow he learnt his trade as a fitter and designer. Peter's business in Oundle started off just

# Events

## Sunday 4th May 10.00am–4.00pm Health and Wellness Fair in The Queen Victoria Hall

A range of stalls offering education information on local services, taster sessions and opportunities to sign up or book with practitioners, therapists or fitness professionals. [www.oundle.info](http://www.oundle.info)

## Monday 5th May 10.00am–4.00pm Have a Go Day at the Recreation Ground, Market Place, Queen Victoria Hall, Sports Club

Sports and activities for all the family for a great day out on Bank Holiday Monday – so turn up and 'have a go'. [www.oundle.info](http://www.oundle.info)

## Tuesday 6th May 4.00pm–8.00pm Health and Wellness Fair at The Queen Victoria Hall

A range of stalls offering education information on local services, taster sessions and opportunities to sign up or book with practitioners, therapists or fitness professionals. [www.oundle.info](http://www.oundle.info)

## Tuesday 6th May 4.00pm–10.00pm Party Day – Zone 1: Music, Food and Entertainment in The Market Place

Zone 1 of the Oundle Party Day is located in the Market Place and centres around Music, Food and Entertainment. [www.oundle.info](http://www.oundle.info)



Graham Darbourne  
of Bulley Davey

## THE BEST TEACHERS & CLASSES IN TOWN!

### SPINNING, PILATES, CIRCUITS BOOTCAMP, YOGA AND MORE...!



#### FEATURES & BENEFITS

- Suitable for all abilities
- Guaranteed results
- Empowering expert coaching
- Varied workouts: never get bored
- Motivates to reach your potential
- Burn loads of calories
- Increase your energy levels
- Lose weight fast...& safely
- Shape & tone your muscles
- Dramatically improve your fitness

T: 01832 273337 | E: [info@oundleftfitness.com](mailto:info@oundleftfitness.com)



## Time for a change?

For a fresh approach to your tax, accounting and business needs call the Bulley Davey team on 01832 273150 or email [bdoundle@bulleydavey.co.uk](mailto:bdoundle@bulleydavey.co.uk)

[www.bulleydavey.co.uk](http://www.bulleydavey.co.uk)

Corby Hitchin Holbeach Huntingdon Melton Mowbray  
Oundle Peterborough Spalding Wisbech

For excellent tenants and happy landlords



### Residential Property Management

Oundle's only dedicated Letting and Management Agent  
25 years experience in the Oundle area  
Competitive fees

A complete professional service - managed or tenant find only  
Member of The Property Ombudsman and The Guild of Letting and Management

88 West Street, Oundle PE8 4EF / Tel: 01832 275158  
[oundle@justlets.com](mailto:oundle@justlets.com) / [www.justlets.com](http://www.justlets.com)

**Oundle festival**  
5-20 JULY 2014

**Celebrating 30 Years**

ALISON BALSOM • DAVID GOODE • CHOIR OF KING'S COLLEGE, LONDON  
FESTIVAL CHORUS • ARONOWITZ ENSEMBLE • THE LORD CHAMBERLAIN'S MEN  
CALEFAX • SING-A-LONG-A 'DIRTY DANCING' • ILLYRIA • EARLY OPERA COMPANY

FOR MORE INFORMATION VISIT [WWW.OUNDLEFESTIVAL.ORG.UK](http://WWW.OUNDLEFESTIVAL.ORG.UK)

**JKR**  
HUMAN RESOURCES

JKR Human Resources is an HR consultancy based in Oundle, providing advice and support to businesses on all matters regarding staff.

Employees are a vital part to the success of many organisations and we work closely with employers to develop best practice for their Company, to help them achieve success through their staff.

For further information please contact [judith@jkrhumanresources.co.uk](mailto:judith@jkrhumanresources.co.uk)

Or telephone  
01832 273722 / 07738 286876  
[www.jkrhumanresources.co.uk](http://www.jkrhumanresources.co.uk)

**Goldsmiths**  
Chartered Surveyors Established 1964

Estate Agents  
Surveyors  
Property Managers  
Auctioneers  
Valuers

The Auction Centre, Eastwood Road,  
Oundle, Peterborough PE8 4DF  
Tel: (01832) 272349  
[www.goldsmithsofoundle.com](http://www.goldsmithsofoundle.com) or  
email [mail@goldsmithsofoundle.com](mailto:mail@goldsmithsofoundle.com)

**Nene Valley news**

The team at Nene Valley News Ltd would like to wish all the riders taking part in the FriendsLife Women's Tour the best of luck.

**Tel: 01522 513515**  
**Email: [advertising@nenevalleynews.co.uk](mailto:advertising@nenevalleynews.co.uk)**  
**Web: [www.nenevalleynews.co.uk](http://www.nenevalleynews.co.uk)**





selling roll ends and rugs on the Peterborough Market. However, Peter has always been one for a challenge, so when he discovered that Suffolk Carpet Weavers was to close down, he bought their looms and decided to start his own weaving in Oundle with the help of his factory manager Jack Ray.

Giving local people the choice to have their carpets locally made is important to Peter and he endeavours to create something unique and environmentally friendly for every person who walks through his door. But this doesn't mean that you have to spend a fortune; Oundle Carpet Weavers offers the perfect carpet whatever your budget, including end of rolls as well as carpets direct from the manufacturer, to the uniquely designed made to order carpets. Oundle Carpet Weavers also offer a range of furniture and beds. For more information call 01832 275009

#### OUNDLE FOOD FESTIVAL

The Oundle Food Festival will, once again, launch the festival fortnight with a Street Market on Saturday 5th July. The line-up for this year's Street Market is terrific, with around 70 stalls providing an amazing diversity of produce and producers, and giving opportunities for people to reconnect with their food – tasting it as it really should be – and meeting the people who grow, nurture and produce it. Street theatre and the Fringe Festival will add to the carnival atmosphere at the market on the day. In addition there will be all kinds of events taking place in Oundle and surrounding villages during the week. Master baker Dan Lepard will be returning by popular demand; a whole host of cookery

demonstrations and masterclasses will take place in The Small Bread Company's brand new cookery school, and there will be masses of children's activities at Barnwell Country Park.

Tickets will be on sale from Easter and for more information, visit the website or phone the box office.

<http://www.oundlefestival.org.uk>, Box Office: 01832 274734, 4 New Street, Oundle, Northamptonshire PE8 4ED

#### OUNDLE GOLF CLUB



Oundle Golf Club has a busy few days planned leading up to and immediately after The Women's Tour.

On Monday 5th May, as part of the 'Sport for All' programme, free 'taster' sessions are being offered to anyone who might be thinking of taking up the game.

For Tuesday 6th May, the Club will have a pitch in West Street from 4pm to 10pm as part of the 'Oundle Party Day'. Information about the club, its fantastic membership offers and how to learn for nothing will be available on the stall and people will be able to swing a club right there on West Street!

The race starts on the morning of Wednesday

## Events

#### Tuesday 6th May 4.00pm–10.00pm Party Day – Zone 2: The Racing Strip in The Market Place

Zone 2 of Oundle Party Day is located along West Street and features sports, speed and competition.  
[www.oundle.info](http://www.oundle.info)

#### Tuesday 6th May 4.00pm–10.00pm Party Day – Zone 4: Bike World at New Street

With Oundle going bike crazy, make sure you visit the Bike World Zone where you will find bike shows, challenges, a bike fix area, bikes, bits and kit sales and bike & triathlon clubs.  
[www.oundle.info](http://www.oundle.info)

#### Tuesday 6th May 4.00pm–10.00pm Party Day – Zone 5: Down in the Nene Valley at St Osyth's Lane

Zone 5 of Oundle Party Day is located on St Osyth's Lane and is themed to display some of the many attractions to residents and tourists of the Nene Valley.  
[www.oundle.info](http://www.oundle.info)

7th May, when everyone and anyone is invited up to the Clubhouse to see the point at which the race starts in earnest, right outside the entrance to the club. Afterwards, a number of activities will be on offer, including walking tours of this beautiful course right on our doorstep. Local residents taking the tour

#### Tuesday 6th May 7.30pm Van Pulling Competition at West Street

As part of the Oundle Party for The Women's Tour there will be a 60-metre Van Pulling Competition on West Street.  
[www.oundle.info](http://www.oundle.info)

#### Tuesday 6th May 7.45pm Cycling journalist and author William Fotheringham talks about his latest book, *Cycling Hard*, at St Peter's Church.

William is coming to Oundle the day before the Women's Tour sets off from this historic market town. Come and hear about his fascinating career in the cycling world and get into the cycling frame of mind ready for the race.  
[www.oundle.info](http://www.oundle.info)

#### Wednesday 7th May 11.00am The Grand Depart – The Womens Tour Race start

17 teams, 102 riders, 150 vehicles with 400 people start Stage 1 of the inaugural Women's Tour from the centre of Oundle. Get in early to find the perfect viewing spot!  
[www.oundle.info](http://www.oundle.info)

will perhaps be surprised to see quite how undulating the terrain is.

Camping, caravan and parking facilities are available for the three days.

For more information telephone 01832 273267 (option 2) or visit [www.oundle.info/womens-tour/](http://www.oundle.info/womens-tour/)

*Let us design*  
**your perfect carpet**  
Bespoke carpets at High Street prices

**NOW**  
**OPEN SUNDAYS**  
**10am-4pm**



**OUNDLE CARPET WEAVERS**  
Manufacturers of Fine Carpets

**SPECIAL OFFER**  
**4M WIDE HEAVY DOMESTIC 80% WOOL TWIST PILE**  
**CARPETS IN 6 FANTASTIC COLOURWAYS.**  
**ONLY £15 per sqm**

**We can now offer carpets with no joins up to 7 metres wide made on our looms.**

*Now your carpet can be as individual as you are.*

WHERE TO FIND US Units 4/6 Eastwood Road, Oundle PE8 4DF T. 01832 275009  
OPENING TIMES Monday to Saturday 8.30am-5.30pm or please book an appointment  
[www.oundlecarpetweavers.com](http://www.oundlecarpetweavers.com)





Oundle Market Place

#### THE BARN AT OUNDLE

Just outside Oundle, near Barnwell Country Park is The Barn Garden Centre and it is packed full of tempting plants for the garden. From trees, conifers and shrubs, herbaceous and alpiners, roses and climbers to seasonal bedding

and vegetables, you will find it at The Barn. With eye catching displays and fresh deliveries every week there is always something new to see. The Barn also provides a full range of gardening products and with summer around the corner they even stock garden furniture and BBQs.

#### THE SPIN SENSATION SWEEPS OUNDLE FITNESS

It is no secret around town that Oundle Fitness is the place to be when it comes to the continually popular Indoor Cycle or 'Spin' classes.

The club initially brought to life just over two years ago has seen its gym membership base grow, as well as its class timetable and now boasts 16 spin classes throughout the week for those keen to take part.

All the Staff at Oundle Fitness are level 3 qualified personal trainers and the club is a staff-run business; customer fitness goals and needs are of the highest concern. The latest big incentive is the new Gold membership which

offers all classes for free. There have been recent investments into the club, with brand new E-series Matrix bikes with monitor screens fitted for that extra experience.

The club aims to provide facilities and classes for all to take part in, regardless of your fitness levels. With our latest push to support the exercise referral scheme through GPs at Oundle Surgery, the team at Oundle Fitness are really helping to improve the health of the community for all shapes and sizes.

The website for Oundle fitness contains all of the information on classes and opening hours. So why not have a look today and visit [www.oundlefitness.com](http://www.oundlefitness.com). Why let your health and fitness wait until tomorrow?



The Women's Cycle Tour's official timed start on May 7th is in front of the entrance to Oundle Golf Club. Parking, toilets & catering available onsite (plus camping & caravanning for the nights of 5th & 6th) - see the cycle tour webpage (accommodation section) of [www.oundle.info](http://www.oundle.info) for details.

Oundle Golf Club's new Lifestyle membership package offers full playing benefits for as little as £250. This gives you 100 'credits' which can be spent whenever you can find time to play on our beautiful course. You can get an official handicap, play in club competitions, or play with other members in regular 'roll-up' sessions – or just play with friends who can play as guests. Call our ProShop 01832 273267 (ext. 2) or visit our website for details.

## the barn

GARDEN CENTRE

Visit The Barn for all your garden needs

- Trees, Conifers & Shrubs
- Perennials & Alpines
- Bedding & Seasonal Plants
- Fruit, Veg & Herbs
- Roses & Climbers
- Grasses & Ferns

The Barn Garden Centre, Barnwell Road, Oundle. PE8 5PB  
01832 273310 - [www.thebarngardencentre.co.uk](http://www.thebarngardencentre.co.uk)  
Find us on facebook

Great Plants, Great Choice, Great Value



#### New Lodge Veterinary Centre

Reception Opening Times  
Mon-Fri 8.30am-6.30pm Sat 8.30am-12.45pm

Getting a puppy or a kitten?

Our vaccinations include  
a free health check

Life stage health and nutrition advice

Free worming and flea treatment

Free 4 weeks insurance

And reduced cost microchipping

Call us today for further details

Modern purpose-built diagnostic  
medical and surgical facilities

Companion Animal Healthcare –  
treatment and advice

Preventative healthcare including  
vaccinations, neutering and dentistry

Consultations by appointment  
Laboratory Facilities and Microchipping

Nurse consultations for advice  
and minor procedures

Pet passports

Spacious car park

Tours of facilities available on request

Pet accessories, leads, collars  
and Royal Canin food for sale

**T • 01832 270 201**

New Lodge Veterinary Centre,  
Red Lodge Rd, Polebrook, Oundle,  
Nr Peterborough PE8 5LL

## Car Spares & Caravans

Upper Benefield near Oundle.

Breaking a good selection of  
vehicles. Vehicles always wanted,  
good prices paid. We also have a  
nice selection of touring caravans  
available from £400. Second-hand  
caravan spares available.

Caravans wanted.

Call us on: 01832 205253  
(closed Sunday)

## Oundle TOOL HIRE

Don't replace it... repair it!

Tool Hire or Buy • Sales • Spares • Ironmongery



Your one stop  
local shop for all  
your tool hire needs.

Local collection and delivery  
service. For details please  
call us on **01832 274009**

All major credit  
cards accepted

2 Eastwood Road, Oundle,  
Peterborough PE8 4DF

[www.oundle-spares-repairs.co.uk](http://www.oundle-spares-repairs.co.uk)

Honda • Stihl • Bosch Industrial • Husqvarna  
Kubota • Takeuchi JCB • Robin • Hitachi  
Makita • Camon • Belle • Oregon





**Saturday 26th April**  
**Pop-up Spring Fayre**  
11am–2pm  
St Mary's Church Hall  
Rushden  
Join St George's Day celebrations lots of 'not on the high street' items tea served.

**Sunday 27th April**  
**Morning Worship with Holy Communion**  
Whitefriars Church at Whitefriars Junior School, Boughton Drive, Rushden 10.15am  
Free  
Andrew Presland 01933 316927  
An informal church service to which everyone is welcome.

**New 'Bluebell & Woodland Exploration' booklet**  
Raunds Library  
From 1.15 pm. Short drive and walk at 2pm, depending on weather.  
Free  
01933 461480  
Buy & try maps for driving or cycling or walking, from £2.50 Suitable for everyone.

**Tuesday 29th April**  
**Button Art Craft Workshop**  
Stanwick Lakes  
10.30am–1pm  
£15 including all materials – book a place with Pauline Procter on 01933 229817  
Normal car park charges apply  
01933 625522  
[www.stanwicklakes.org.uk](http://www.stanwicklakes.org.uk)  
Learn how to make a unique and personal button art card or picture.

**Railways Home and Abroad**  
Rushden Conservative Club, High Street South, Rushden 8pm  
Non members £3, members £2 includes buffet  
01933 350287  
British Rail diesel driver David Smith will give a film, show and lecture on steam and locomotives in the UK and abroad.

**Wednesday 30th April**  
**Roundhouse springclean**  
Stanwick Lakes  
10am–1pm  
Free – book your place with Liz on [l.williams@rfrtrust.org.uk](mailto:l.williams@rfrtrust.org.uk) – normal car park charges apply  
01933 625522

[www.stanwicklakes.org.uk](http://www.stanwicklakes.org.uk)  
Help spring clean the Roundhouse ready for the coming season.

**Thursday 1st May**  
**Discovery Walks**  
Meet at Loddington Church  
2pm £1.50, no need to book.  
01780 782747 [www.weanorthamptonshire.org](http://www.weanorthamptonshire.org)  
Exploring Northamptonshire – Loddington and Cransley 4.5 miles.

**May Time Celebrations Presentation**  
Raunds Library  
10.30–11.15am  
Free  
01933 461480  
Find out more about local celebrations & events.  
Informative maps to buy from £2.50 each.

**Meeting of Raunds and District History Society**  
Raunds Saxon Hall  
7.30pm  
Visitors £3  
Contact Rachel Henderson at: [raundshistory@btinternet.com](mailto:raundshistory@btinternet.com)  
Mike Leonard presents 'Nurseryrama 2', origins and history of popular nursery rhymes, with music.

**Thursday 1st – Sunday 4th May**  
**Raunds Music Festival**  
The Saxon Hall, Thorpe St, Raunds, NN9 6LS  
8pm onwards  
From £5, Full Weekend £55  
[contact@raundsfestival.com](mailto:contact@raundsfestival.com) 07756 015 615  
Top-line international folk, jazz and roots musicians and dancers. Info and tickets from [www.raundsfestival.com](http://www.raundsfestival.com)

**Friday 2nd May**  
**Retireds' Group – with Michael Phillips talking on housing advice for older people**  
The Bridge Community Office at Whitefriars Junior School, Boughton Drive, Rushden  
1.30pm–3pm  
Free  
John & Celia Underwood (01933 676989)  
A friendly group to which all at retirement age are welcome.

**Oundle Cinema presents Film 'Saving Mr Banks' (12A)**  
Stahl Theatre, West Street, Oundle PE8 4EJ  
7.45pm  
Tickets £5 adults, £3 under 18s  
[www.oundlecinema.org.uk](http://www.oundlecinema.org.uk)  
Oundle Festival Office, 4 New Street, Oundle PE8 4ED 01832 274734.  
The engaging story of Mary Poppins starring Emma Thompson and Tom Hanks.

**Saturday May 3rd**  
**Coffee Morning and Bric-a-Brac stall**  
Irthlingborough Methodist Church College Street NN9 5TU  
10am–12 noon  
07757 072210  
Variety of items for sale with refreshments available, everybody welcome.

**Alice in Wonderland Spring Fair**  
St Peter's Church, Irthlingborough.  
2pm–4:30pm  
Bottle Stall, Refreshments, Plants, Cakes, Games and so much more!  
All Welcome – hope to see you there.

**Craft, Gift & Vintage Fayre**  
Masonic Hall, Wellingborough Road, Rushden  
10am–4pm  
Free & free parking  
[kaytandmick@hotmail.co.uk](mailto:kaytandmick@hotmail.co.uk)  
Lots of lovely items made by local people at affordable prices. Refreshments available.

**Baby/Kids Nearly New Sale**  
The Pemberton Centre H E Bates Way, NN10 9YP  
Rushden  
10am–12noon  
£1 (Kids free)  
[Karen\\_aves@hotmail.co.uk](mailto:Karen_aves@hotmail.co.uk)  
Lots of stalls with baby and kids' clothes, toys and equipment. Come and pick up some bargains!



**Coffee Morning**  
St Mary's Church, Ringstead  
10am–12noon, Free  
Rosemarie Coles 01933 624262  
Coffee morning including book stall, bric-a-brac and raffle. Proceeds towards new church facilities. All welcome.

**Sunday 4th May**  
**Morning Worship**  
Whitefriars Church at Whitefriars Junior School, Boughton Drive, Rushden  
10.15am, Free  
Andrew Presland 01933 316927  
An informal church service to which everyone is welcome.

**Dawn Chorus Walk**  
St Peter's Church car park, Irthlingborough

5.15am–7.45am  
Free  
Claire Wylde 01604 405285  
[claire.wylde@wildlifebcn.org](mailto:claire.wylde@wildlifebcn.org)  
Join the Wildlife Trust for a magical and musical early morning walk.

**Monday 5th May**  
**Table Top Sale**  
Sudborough  
11am–3pm  
Free  
Stalls £5/£10 call Sue 01832 735623 in Marquee – cream teas served.

**Open Garden**  
Rectory Gardens  
Sudborough  
11am–3pm  
£3  
Famous Rectory Gardens, cream teas, call Sue 01832 735623

**Tuesday 6th May**  
**Monthly meeting of Great Companions**  
Rushden Town Bowls Club, Northampton Road, Rushden NN10 0XG.  
7pm.  
Free (£5 annual subscription)  
01933 356006, 01933 674755, 01933 229942.  
Rushden based social group for active single men and women over 60.

**Wednesday 7th May**  
**Oundle Horticultural Society talk**  
Methodist Church Hall, Drummingwell Lane, Oundle  
7.45pm  
£2 patrons, £3 visitors  
01832 272623  
An illustrated talk on the care and cultivation of fuchsias, free light refreshments.

**Monthly Meeting of Raunds Ladies Group**  
The Saxon Hall, Raunds.  
8pm–10pm.  
Visitors £3.50 includes raffle & refreshment.  
Linda 01933 622926 Judy 01933 622451  
Speaker Wendy Smith, 'The Ancient Art of Knotting'

**Thursday 8th May**  
**Raunds WI**  
The Saxon Hall, Raunds  
7.30pm  
£3.50 Includes tea/coffee and cake  
Mary Harber 01933 624271  
This is a meeting to discuss the Resolution for 2014 with Christine Farmer from WI House.

**Saturday 10th May**  
**A Coffee Morning**  
St Mary's Church Hall  
Rushden  
10am–12noon, 50p  
Various Stalls. Proceeds for

the Children's Society.

**Village Organ Recital**  
All Saints Church Elton  
7:30pm, £10  
Chris Milton (Church Warden) 01832 280415  
[milton\\_chris\\_j@btinternet.com](mailto:milton_chris_j@btinternet.com)  
Organist: Marc Murray, director of music, St Botolph's Boston; musical director Peterborough Opera.

**Baby and Child Table Top Sale**  
Stanwick Village Hall  
9.30am–11.30am  
[nicola\\_bassett80@yahoo.co.uk](mailto:nicola_bassett80@yahoo.co.uk)  
A table top sale of nearly new baby and children's clothes, toys and accessories.

**Sunday 11th May**  
**Oundle Cinema presents Film 'All is Lost' (15)**  
Stahl Theatre, West Street, Oundle PE8 4EJ  
7.45pm  
Tickets £5 adults, £3 under 18s  
[www.oundlecinema.org.uk](http://www.oundlecinema.org.uk)  
Oundle Festival Office, 4 New Street, Oundle PE8 4ED 01832 274734.  
Gripping, tense, exciting ocean based drama starring Robert Redford. Bar and Ticket Office open 7.15pm, Programme starts 7.45pm

**Three County Crawl – countryside walk**  
Near Hargrave Church (NN9 6BW)  
10.30am  
Free  
Andrew Presland 01933 316927  
A three-mile in countryside organised by Whitefriars Church, Rushden. All are welcome.

**Every Thursday during school term time**  
**Music Makers**  
Titchmarsh Pavilion  
9.30am–10.15am  
£4 per child and £2 per sibling  
Naomi Cooper on [musicmakersnorthants@gmail.com](mailto:musicmakersnorthants@gmail.com)  
Funky music and movement group for 0-5 years with parachute, puppets, balls, bubbles and more.

**Music Makers**  
Joan Strong Centre, Oundle  
11.15am–12noon  
£4 per child and £2 per sibling  
Naomi Cooper on [musicmakersnorthants@gmail.com](mailto:musicmakersnorthants@gmail.com)  
Funky music and movement group for 0-5 years with parachute, puppets, balls, bubbles and more.

**Little Treasures Tots group**  
St Laurence's Church, Stanwick  
9.30am–11.00am

Donations to cover costs.  
Nicki 01933 625658  
For pre-schoolchildren and their guardians. Bible stories, song, craft and fun – all welcome.

**Every Tuesday and Thursday (except Christmas and New Year)**  
**Health Walks**  
Stanwick Lakes  
10am–11am  
Free – normal car park charges apply  
01933 625522 [www.stanwicklakes.org.uk](http://www.stanwicklakes.org.uk)  
Regular walking can help improve your health. Join us in our regular walks.

**Every Wednesday (except December)**  
**Rainbow Cafe for Tots (aimed at up to age 5) and their guardians**  
Stanwick Lakes  
10.30am–12noon  
£2 per child – normal car park charges apply  
01933 625522 [www.stanwicklakes.org.uk](http://www.stanwicklakes.org.uk)  
Make new and exciting crafts then join Lisa from Music and Movement to play, sing and dance.

**First Friday of the month**  
**Craft Cafe (recommend checking before travelling)**  
Stanwick Lakes  
10.30am– pm  
Modest charges for some materials – normal car park charges apply  
01933 625522 [www.stanwicklakes.org.uk](http://www.stanwicklakes.org.uk)  
Learn new craft skills, share your experience and meet up with crafty friends.

**Last Sunday of the month (except December)**  
**Local Producers' and Farmers' Market (recommend checking before travelling)**  
Stanwick Lakes  
10am–2pm  
Free entry to market – normal car park charges apply  
01933 625522  
[www.stanwicklakes.org.uk](http://www.stanwicklakes.org.uk)  
Browse through tempting treats and gifts made and farmed by local businesses.







East  
Northamptonshire  
Council

## Notice of planning applications received

**Notice is given that the following applications have been received together with the last date for making representations:**

### Apethorpe

**14/00619/LBC (17/05/2014) (LBRegs)** Installation of new door to existing arched opening at rear of the Hall Range; and the restoration of the Great Hall screen frieze to include the reinstatement of the columnar screen at Apethorpe Hall Hunting Way Apethorpe Peterborough Northants PE8 5DG

### Ashton

**14/00501/LDE (10/05/2014) (Info)** Use as small car park for Ashton Mill Museum and 1 and 2 Mill Cottages (as per planning approval 94/00649/FUL) at Ashton Mill Oundle Road Ashton Peterborough Northants PE8 5LB  
**14/00603/FUL (17/05/2014) (LB/CA)** To erect two timber framed double garages with log store lean-to and associated hard landscape to give access of existing parking area at Mill Cottages Oundle Road Ashton Northants PE8 5LB

**14/00604/LBC (17/05/2014) (LBRegs)** To erect two timber framed double garages with log store lean-to and associated hard landscape to give access of existing parking area at Mill Cottages Oundle Road Ashton Northants PE8 5LB

**14/00672/FUL (17/05/2014) (LB/CA) (LBRegs)** To erect a wood shed with hardstanding in a corner of the back garden at 27 The Green Ashton Peterborough Northants PE8 5LD

**14/00673/LBC (17/05/2014) (LBRegs)** Formation of a new 1st floor bathroom and associated window at rear elevation at Acacia Cottage 26 The Green Ashton Peterborough Northants PE8 5LD

### Barnwell

**14/00675/OUT (17/05/2014) (Art8)** Outline: Redevelopment to provide a mixed use scheme to include improved marina facilities, residential moorings, permanent floating accommodation (C3), 2 x pub / restaurant (A3 / A4), retail (A1), business accommodation (B1), workshop units (B2), holiday accommodation (C3), boatyard, boat clubhouse, parking and associated infrastructure (all matters reserved) at Oundle Marina Village Barnwell Road Oundle Northants

### Benefield

**14/00621/FUL (17/05/2014) (LB/CA)** Conversion and change of use of The Wheatsheaf Coaching Inn to provide five residential units together with enabling development comprising the erection of four detached dwellings with garages at The Benefield Wheatsheaf Main Street Upper Benefield Northants PE8 5AN

### Duddington With Fineshade

**14/00516/FUL (17/05/2014) (LB/CA)(Info)** Proposed conversion of and extension to former wash house to create a new dwelling at

The Wash House Stamford Road Fineshade Northants

### Easton-on-the-Hill

**14/00640/FUL (17/05/2014) (LB/CA) (LBRegs)** Replacement of existing first floor window, replace glass in existing velux. Retile potting shed and carport roof at 11 Church Street Easton On The Hill Stamford Northants PE9 3LL

**14/00641/LBC (17/05/2014) (LB/CA) (LBRegs)** Replacement of existing first floor window, replace glass in existing velux. Retile potting shed and carport roof at 11 Church Street Easton On The Hill Stamford Northants PE9 3LL

### Great Addington

**14/00648/FUL (17/05/2014) (Art8)** Demolition of existing barn B and erection of replacement building to form 1 no dwelling at Rectory Farm Cranford Road Great Addington Kettering Northants NN14 4BQ

### Higham Ferrers

**14/00567/FUL (10/05/2014) (Info)** Construction and siting of large shed in back garden (Retrospective) at 3 Vine Hill Drive Higham Ferrers Rushden Northants NN10 8EF  
**14/00701/FUL (10/05/2014) (Info)** Flat roof dormer to rear and side and loft conversion at 97 Wharf Road Higham Ferrers Rushden Northants NN10 8BH  
**14/00717/VAR (17/05/2014) (Art8)** Variation of condition 1 to allow for several plot substitutions and minor amendments pursuant to application 13/01072/REM Reserved matters: Appearance, landscaping, layout and scale in relation to eighty eight new homes and associated works (pursuant to outline planning permission EN/12/00648/OUT) at land between A6 Higham Ferrers Bypass and A5028 Station Road Higham Ferrers Northants

### Irthlingborough

**14/00652/LDP (17/05/2014) (LBRegs)** Loft conversion with build up of gable and dormer to rear at 9 Spinney Road Irthlingborough Wellingborough Northants NN9 5RY  
**14/00715/LDE (10/05/2014) (Info)** Use of bungalow as C3 dwelling at Bungalow A6 Irthlingborough Bypass Irthlingborough Northants NN9

### Kings Cliffe

**14/00731/LBC (17/05/2014) (LBRegs)** To replace all windows and external doors at 22 West Street Kings Cliffe Peterborough Northants PE8

### Luddington

**14/00677/FUL (10/05/2014) (Info)** Double garage and workshop with first floor flatlet over at 15 Luddington In The Brook Northants PE8

### Oundle

**14/00616/FUL (17/05/2014) (LBRegs)** Change of use from A1 to A3 at 6 West Street Oundle Peterborough Northants PE8 4EF  
**14/00647/FUL (10/05/2014) (Info)** Proposed single storey extension to rear of existing

dwelling at 19 Warren Bridge Oundle Peterborough Northants PE8 4DQ  
**14/00664/LBC (17/05/2014) (LBRegs)** To fix 9 x pv solar panels to the South South West inner roof at North Jericho 42A Market Place Oundle Peterborough Northants PE8 4AJ  
**14/00666/FUL (10/05/2014) (Info)** Extension to side of house for garage at 29 St Peters Road Oundle Peterborough Northants PE8 4NU

### Raunds

**14/00646/FUL (10/05/2014) (Info)** Two detached dwellings with garages to replace previously existing dwelling at 45 Brook Street Raunds Northants  
**14/00721/FUL (10/05/2014) (Info)** Conservatory to front elevation of side extension to act as porch with improved access for disabled occupant at 105 Langham Road Raunds Wellingborough Northants NN9 6LB

### Ringstead

**14/00710/FUL (10/05/2014) (Info)** Single storey front extension at 26 Northfield Avenue Ringstead Kettering Northants NN14 4DX

### Rushden

**13/01948/REM (10/05/2014) (Info)** Reserved matters: Details of access, appearance, landscaping, layout and scale pursuant to outline planning application 11/00721/OUT: 'Demolition of garages and construction of a 1x3 bedroom 5 person house, with associated parking and additional off street parking' dated 18.08.11 at garages between 16 and 18 Tennyson Road Rushden Northants  
**14/00477/FUL (10/05/2014) (Info)** Erection of 4-bedroom detached dwelling at 283 Wellingborough Road Rushden Northants  
**14/00639/FUL (10/05/2014) (Info)** Single storey extension to side of house to include porch to the front elevation and demolition of existing garage at 1 Dean Close Rushden Northants NN10 9EH  
**14/00676/FUL (10/05/2014) (Info)** Conversion and extension of existing garage to form bedroom and shower room facility at 26 Chapel Close Rushden Northants NN10 0FH

**14/00692/FUL (17/05/2014) (Art8)** Redevelopment of existing retail site to retain existing building and the erection of 2 nos. additional retail (Class A 1) units on the footprint of the existing outdoor garden centre (one of the new units to incorporate a mezzanine floor for mixed use retail purposes (Class A 1) and as use as a veterinary/grooming facility (sui generis)) at DIY Store Crown Way Rushden Northants NN10 6AX  
**14/00693/FUL (17/05/2014) (LB/CA)(Info)** Change of use from travel agent (A1) to betting shop (A2) and installation of air conditioning condenser and satellite dish to rear of premises at 46 High Street Rushden Northants  
**14/00695/ADV (10/05/2014) (Info)** Replacement signage (illuminated) at 46 High Street Rushden Northants  
**14/00700/FUL (10/05/2014) (Info)** Construction of a first floor bedroom and construction of new double garage (Resubmission of 14/00039/FUL) at 71 Northampton Road Rushden Northants NN10 6AJ

**14/00706/SCR (10/05/2014) (Info)** Screening opinion for erection of forty-nine dwellings with associated access road including demolition of extensions and sheds to the rear of listed building at Grenson Shoes Ltd Queen Street Rushden Northants  
**14/00716/FUL (10/05/2014) (Info)** Removal of prefabricated single garage and the erection of a brick built single garage at 2 Wildacre Road Rushden Northants NN10 6UQ

### Stanwick

**14/00661/FUL (10/05/2014) (Info)** Demolition of existing conservatory, proposed single storey extension to rear of property and new window to existing kitchen at 32 Raunds Road Stanwick Wellingborough Northants NN9 6PP  
**14/00665/FUL (10/05/2014) (Info)** Two storey side and rear extensions (resubmission of previous applications) at 14 Raunds Road Stanwick Wellingborough Northants NN9 6PP

### Sudborough

**14/00704/FUL (17/05/2014) (LB/CA)** New automated access gates, stone piers and walls. Remove existing timber gates retaining piers at Brook House Main Street Sudborough Kettering Northants NN14 3BX  
**14/00705/LBC (17/05/2014) (LBRegs)** New automated access gates, stone piers and walls. Remove existing timber gates retaining piers at Brook House Main Street Sudborough Kettering Northants NN14 3BX

### Thrapston

**14/00694/VAR (10/05/2014) (Info)** Variation of condition 12 - final certificate - pursuant to application 09/00071/FUL: Demolition of existing bungalow and erection of new dwelling at 68 Oundle Road Thrapston Kettering Northants NN14 4PE  
**14/00703/FUL (10/05/2014) (Info)** Dropped kerb and replacing grass on property with tarmac or paving and removing front hedge at 102 Oundle Road Thrapston Kettering Northants NN14 4PF

### Woodnewton

**14/00657/FUL (17/05/2014) (LB/CA)** Extension to rear of dwelling at 19 Orchard Lane Woodnewton Peterborough Northants PE8 5EE  
**14/00658/FUL (17/05/2014) (LB/CA)** Alterations and rear extension, replacement of car port roof and addition of frontage window at Porlock Place 33A Main Street Woodnewton Peterborough Northants PE8 5EB

**The reason for applications being advertised is as follows:**

**Art8 – Town and Country Planning (General Development Procedure) Order 1995.**

**Info – Non-statutory – included for information only.**

**LB/CA – Planning (Listed Buildings and Conservation Areas Act 1990.**

**LBRegs – Planning (Listed Buildings and Conservation Areas) Regulations 1990.**

**David Reed**  
**Head of Planning Services**  
**Dated 26 April 2014**

Consultation deadlines will differ for each application. Please go to [www.east-Northants.gov.uk/planningapplications](http://www.east-Northants.gov.uk/planningapplications) for details.

## Experience the magic of the Dawn Chorus

Come and join the Wildlife Trust for a Dawn Chorus Walk on International Dawn Chorus Day, to celebrate nature's most wonderful wake-up call!

Meeting at St Peter's Church, Irthlingborough at 5.15am on Sunday 4th May, the guided walk will take place around Irthlingborough Lakes and Meadows nature reserve, where

you will be joined by a Wildlife Trust expert to help identify the bird songs you hear. After the walk, warm up with a hot drink and a pastry indoors, just as the rest of the world is beginning to wake up!

This is a free event but booking is required. Please make sure you are warmly dressed and bring along a pair of binoculars if you

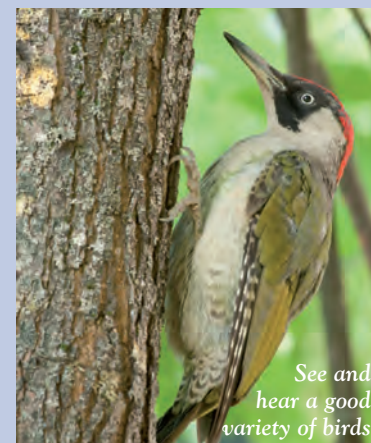
have them.

Louise Tuffin, Nene Valley Education and Community Manager at the Wildlife Trust said: "We should see and hear a good variety of birds on the walk such as cuckoo, sedge warbler and Cetti's warbler, as well as familiar garden birds such as robin, blue tit and green woodpecker.

"Although it may be difficult

to drag yourself out of bed, the dawn chorus is worth witnessing and especially enjoyable with an expert guide on hand to help identify the birds as they sing."

To book your place please contact Claire Wylde on 01604 405285 or email [claire.wylde@wildlifebcn.org](mailto:claire.wylde@wildlifebcn.org). For more information visit [www.wildlifebcn.org](http://www.wildlifebcn.org)



See and hear a good variety of birds



**Taurus Holidays**

**4 DAYS**

**JUST £299!**  
FOUR-STAR HOTEL

**KEUKENHOF AND AMSTERDAM DEPARTS 15 MAY**

The spectacle of Holland's bulbfields and the beautiful Keukenhof Gardens are only the start of this four-star tour, which is based at a luxury hotel which has just been refurbished, complete with sauna and large bedrooms. We will also be visiting Amsterdam, with an optional canal trip or Chinese meal on the floating Sea Palace restaurant. Two evening meals are included in the price.

**OR**

**5 DAYS**

**JUST £269**  
INCLUDES DINNERS!

**EASTBOURNE DEPARTS 23 JUNE**

The doyen of South East resorts, Eastbourne is set in the lovely rolling downlands of Sussex, which we'll pass through on our journey. Based at the Shore View Hotel, we'll leave you to relax and shop on your first day, then we'll show you around, with excursions to Hastings and Rye, the South Downs and Brighton, with plenty to see and do. We've even thrown in two nights' entertainment back 'at base'!

**CALL NOW ON**  
**01933 439362**

**Get our FREE brochure!**  
Email [Taurus@rbtravel.co.uk](mailto:Taurus@rbtravel.co.uk)  
[www.taurusholidays.co.uk](http://www.taurusholidays.co.uk)

• Window sashes • Door frames • Locks • Hinges • Sliding box sash windows • Doors • Hardwood Patios • Burglary repairs • Mouldings • Composite doors

**THRAPSTON GLAZING & JOINERY WORKSHOP**

*Est 85*

**FREE QUOTES** **FREE GENUINE ADVICE**

**MANUFACTURERS OF HIGH QUALITY TRADITIONAL WINDOWS, DOORS & CONSERVATORIES IN HARDWOODS & SOFTWOODS**

Manufacturers of replica windows, doors & mouldings for the older properties & houses of character.

**WINDOWS • DOORS CONSERVATORIES UPVC and ALUMINIUM GLASS CUT TO SIZE WHILE YOU WAIT**

We have been repairing customers existing windows and doors for over 15 years and this has become more and more popular, we now offer a dedicated, quality repair service with 1000s of spare parts for all makes of windows and doors, including, locks, hinges, handles, glass units, etc.

**SAME INSTALLATION TEAM FOR LAST 25 YEARS.**

*All of this from a small local company offering a combined wealth of experience of over 150 years from our small workforce of six skilled craftsmen in the joinery, wood, aluminium & UPVC window and door industry.*

UNIT 11, COTTINGHAM WAY, THRAPSTON  
**01832 734570** **FENSA**  
[www.thrapstonwindowsanddoors.co.uk](http://www.thrapstonwindowsanddoors.co.uk)  
• Window sashes • Door frames •

# Your Garage Only Beautiful

The largest selection in the UK is in Wellingborough, with 126 models of Garage Doors for you to look at, touch, feel and test. With 88 different colours and a huge variety of handles and fittings, you are bound to find exactly what you want for your home.

**Your 6 point guide to help you decide what you need**

1. Will your garage door need extra locks?
2. How much room do you want or need for your car?
3. Would you like to have a maintenance free material?
4. Do you use your garage as part of your living space?
5. Would you like an automatic door with a remote control?
6. How would you prefer it to open: upward, outward around the corner, on side hinges or otherwise?

**Simply book a survey, make your choice and leave the rest to us!**

## SPRING sale

Over 200 garage doors at **KNOCK DOWN PRICES**, All Must Go!!!

With 88 different colours and a huge variety of handles and fittings, you are bound to find exactly what you want for your home.

**THE GARAGE DOOR CENTRE**

**Tel: 01933 229135**

Opening Hours:  
Monday-Friday 8.30 - 5.30, Saturday 9.00 - 4.00

**HEAD OFFICE & MAIN SHOWROOM**  
6-8 Meadow Close, Finedon Road, Wellingborough, NN8 4BH



# VetSavers

**44 High Street, Thrapston**  
**T: 01832 731731**

**Puppy & Kitten Vaccine Courses from Under £15**

**Neutering**  
Cats from **£27.99**  
Dogs from **£59.99**  
Rabbits from **£34.99**

**We wont be beaten on price!**

**VET SAVERS**  
Excellent Value - Quality Care

**Open: 9am - 7pm Weekdays**





# Classifieds

Deadlines for all classifications: 5pm Monday prior to issue date.

A complete version of our Terms and Conditions can be found online at [www.nenevalleynews.co.uk](http://www.nenevalleynews.co.uk)  
Pay by credit/debit card or cheque. All major credit/debit cards accepted.

## Births, Marriages, Deaths and other family announcements

### THANKS

**WARBURTON** – The family of the late Dennis Warburton would like to thank everyone who came to the funeral and have donated so much to the WNAA, we raised £627. Thank you all very much.

All messages contained in this section of the newspaper and published on line are taken in good faith and any incorrect information remains the supplier's liability. It is assumed that all notices submitted are factually correct. By submitting a family announcement you agree to and are bound by the fact that you confirm the validity of the information supplied.



### ACCOUNTANCY

#### Jon Essam & Co Ltd

Chartered Accountants

Self Assessment • Personal & Corporate Tax Planning  
Book Keeping & VAT • New Business Start Ups  
Payroll Services/CIS • Sage Software & Support  
Free initial consultation

Tel: 01832 730280 Fax: 01832 730281  
jon@essamca.co.uk [www.essamca.co.uk](http://www.essamca.co.uk)

23 Cottingham Way, Thrapston,  
Kettering, Northants, NN14 4PL  
(Onsite parking available)



### CHIMNEY SWEEPS



Sweeping chimneys across  
Northants, Beds, Pboro, Hunts, Cambs

- ✓ Prompt, Reliable, Clean & Efficient
- ✓ Fully Insured
- ✓ Bird Guards & Cows Fitted



Thrapston 01832 734 598 Call 24hr 07805 261 065  
Email steve@sweptservices.co.uk

**TOP SWEEP**  
CERTIFIED CHIMNEY SWEEP  
FULLY INSURED, SERVICE CERTIFICATE ISSUED.  
We feel the need, the need to sweep  
★ 01536 523511 ★  
[www.topswEEP-kettering.co.uk](http://www.topswEEP-kettering.co.uk)



### GARDENING

**NO JOB TOO SMALL**

- Garden Design and Landscaping • Consultancy basis if required
- Grass Cutting • Hedge trimming • Lawn Care • Weed Control
- Planting • Patio/decking cleaning • Garden clearance
- All aspects of garden maintenance • Regular or one-offs
- Competitive rates • Domestic and commercial

Quality reliable service from a local friendly gardener  
Winter, Spring, Summer and Autumn  
07825 789521

**Lentons Garden Services**  
QUALITY AS STANDARD  
36 Lyveden Road, Brigstock NN14 3HE  
[lentonsgarden@btinternet.com](mailto:lentonsgarden@btinternet.com)



### HOME IMPROVEMENTS

**Ashby's Allsorts**  
Home Improvement & Handyman Services  
Free Estimates  
No Job Too Small  
Inside and Outside Work Undertaken  
Public Liability Insurance  
Quality Work at Competitive Prices  
Tel: 01832 771020  
Mobile: 07584 673767  
Email: [contact@ashbys-allsorts.co.uk](mailto:contact@ashbys-allsorts.co.uk)  
[www.ashbys-allsorts.co.uk](http://www.ashbys-allsorts.co.uk)  
Based in Thrapston, we service a radius of 30ish miles.

**DENFORD CONSTRUCTION**

No job too small, all trades covered  
We carry out new builds, extensions, refurbishments, alterations & any home improvements required.

1 Spinney Rise, Denford, Kettering NN14 4AR  
Email: [ian.polson@btinternet.com](mailto:ian.polson@btinternet.com) • Mobile: 07970 760 349

**!!!GET PLASTERED!!!**

For all your plastering needs.  
No job too small, no fuss, no nonsense!  
Reliable and trustworthy service at the best possible price.  
Call Steve for free, friendly advice or a free quote.

30 years' experience  
Qualified tradesman

07703 720138 • 01933 430051

Andrew Porter BSc. (Hons)  
Architectural Consultant

PLANS DRAWN FOR PLANNING & BUILDING REGULATION APPROVAL

Telephone: 01933 626 183 Mobile: 07544 207218  
e-mail: [andrewporter282@btinternet.com](mailto:andrewporter282@btinternet.com)

**Kevin Neil Chambers**  
RE-BOARD & SMOOTH CEILINGS  
PLASTERING – COVING – PATIOS  
GARDEN WALLS – FENCING – BLOCK PAVING  
NO JOB TOO SMALL  
01832 731087 OR 07713 890754  
RELIABLE, CLEAN AND FRIENDLY SERVICE  
[kevinchambers07@btinternet.com](mailto:kevinchambers07@btinternet.com)

**Debbie Dawson Interior Painter and Decorator**

- Free estimates • Over 15 years experience

Tel: 01832 274652 Mobile: 07779 393458

**10% OAP DISCOUNT**

**Jon Spencer Technical Drawing Services**  
Plans drawn for planning and building regulation applications  
01933 316044

**CONSERVATORIES**

EG VICTORIAN 3500 BY 3500  
FULLY INSTALLED INCLUDING ALL BRICKWORK AND VAT

**£7250**

ALL OTHER DESIGNS AND SIZES AVAILABLE  
UNBEATABLE PRICES  
PHONE NICK ALLINGTON ON (01832) 734070  
[WWW.CONSERVATORIESBUILT.CO.UK](http://WWW.CONSERVATORIESBUILT.CO.UK)



### HOME SERVICES

**FIREWOOD**

- Loose loads of hardwood logs  
1 m3 £80.00  
1 1/4 m3 £95.00  
2 m3 £150.00  
2 1/2 m3 £185.00  
3 m3 £220.00  
Logs are cut and split 8-9" or customers' required lengths.
- Loose loads of softwood logs
- Pre-packed coal & smokeless coal
- Kindling stick and Log nets
- TRADE WELCOME

01832 293070 / 01775 630011 / 07850 200517  
[rusticsleepers@hotmail.co.uk](mailto:rusticsleepers@hotmail.co.uk)

**DONNO R G TV/AERIAL SERVICES**  
Est 1981  
TV/DVD repairs, servicing at your home if possible  
Full installation service available.  
Freesat and Freeview digital aerials supplied and installed from £80. All work guaranteed.  
No call out charge locally. Free estimates on repairs.

**Tel: 01933 356680**

**PGR Plumbing & Heating**  
Tel: 01933 698116  
24 Hr Emergency Service  
Email: [pgrplumbing@btinternet.com](mailto:pgrplumbing@btinternet.com)  
Web: [www.pgrplumbing.co.uk](http://www.pgrplumbing.co.uk)

Specialists in Gas Installations  
Gas Servicing & Maintenance  
Landlords Gas Safety Certificates  
Central Heating Powerflushing  
Household Plumbing & Drainage

**POSITIVE ELECTRICAL & PLUMBING SERVICES**

PART P APPROVED ELECTRICAL CONTRACTOR  
RELIABLE & PROFESSIONAL  
NEW BUILDS, EXTENSIONS, REWIRES  
FUSE BOARD UPGRADES, SHOWERS & MORE  
ALSO FIRE ALARMS & EMERGENCY LIGHTING  
FOR A QUOTE OR ADVICE, CONTACT PAUL ON:

OFFICE: 01832 732881  
MOBILE: 07939 088246  
OR EMAIL: [postve@hotmail.com](mailto:postve@hotmail.com)

**ENSIGN GAS ENGINEERS**  
GAS FIRES, GAS COOKERS  
INSTALLATION, SERVICE AND REPAIR  
Recommended service agent for:  
Focal Point Fires, Superior Fires and Eco Fires

**NO CALL OUT CHARGE**

**Tel: 01933 318327**

**Wet room and bathroom installers**

**AGUA**  
We love water

Plumbing, Heating & Tiling  
Porcelanosa Tile & Bathroom products available  
Repairs and installations  
We also stock taps  
Boiler service from £79.00  
Radiators installed

**01933 625 231**  
[aguainstallations@gmail.com](mailto:aguainstallations@gmail.com)

**Part P Registered**

**A. SEATON ELECTRICAL LTD**

- Rewires, fuse board replacements
- Fault finding, extra sockets & lights
- Testing, inspection & certification
- No job too small, free estimates given

Email: [seatonsparky@gmail.com](mailto:seatonsparky@gmail.com)  
T: 01933 778504 M: 07952 249885

**CLEAR THE JUNK**  
The Rose Clearance Service

Full - Part - Single Items.  
Fully Registered and Insured. Est 30 years.  
[www.rose-clearance-services.co.uk](http://www.rose-clearance-services.co.uk)  
Tel: 01933 317113 or 07761 248266

**PLUMBER**

All plumbing work undertaken - No call out charge  
Toilet repairs - Dripping overflows - Leaks and bursts  
Garden taps installed - Tap repairs and replacements  
Radiators supplied and fitted  
20 years' experience  
Call Tim 01832 358248 or 07957 550660

**HUNT PLUMBING & HEATING**

Please call Matthew for a quote  
Tel/Fax: 01933 394442  
Mobile: 07919 485458  
e-mail: [info@huntplumbing.co.uk](mailto:info@huntplumbing.co.uk)

[www.huntplumbing.co.uk](http://www.huntplumbing.co.uk)

**COSTUME JEWELLERY AND ALL UNWANTED JEWELLERY**  
BROKEN OR PERFECT BOUGHT.  
ALSO OLD WATCHES AND COINS.  
ANY QUANTITY. JILL WILDING 01832 737803.

**HOUSE CLEARANCE SERVICE**

Whole or part house contents bought and cleared thoroughly, rubbish included.  
Richard Wilding 01832 737803

**Greys Painting & Decorating**

All Aspects Reliable Clean Professional Service  
Competitive Rates  
References Available  
Free Quotes  
Fully Insured  
All Small Jobs Welcome

01933 383 505  
07734 462 091

**Paul Lawes PLASTERING**

Re-boarding to smooth ceilings  
Artexing • Rendering • Coving  
20 years' experience

Call Paul for free and friendly advice  
01933 316817 • 07731 649628

**Ablehire**

TOOLS & EQUIPMENT HIRE  
Trade, DIY & Industry

**HIRE, SALES & REPAIR**

11 Washbrook Road, Rushden Tel: 01933 350304

**KM Media & Marketing**  
Your partner in publishing  
ONLINE | IN PRINT | IN DIGITAL



## Plumber Local & Fast!

### Plumbing

Leaks & bursts • Toilets & taps  
Pumps & valves • Cylinders & sinks

### Bathrooms

Design & build • Supply & fitting  
Carpentry & tiling  
+ heating systems

- No call-out charge!
- City & Guilds Qualified
- All work guaranteed



01933 450004 or 07921 469471

## LADY TILER

### WALLS AND FLOORS

Friendly advice. No job too big or too small.

Please contact Karen

Tel: 01933 461295 / 07975 752580



## IT



### Computer Slowed Down and Playing Up?

Broadband a Nightmare?

Just need a bit of help but don't know what to do or who to turn to?

Contact Gordon Monk 01832 293505

## Computer Repair Northamptonshire and surrounding areas

All areas covered, call now:  
Tel: 01933 698 911 Mob: 07980 149 455  
[www.computerrepairrushden.co.uk](http://www.computerrepairrushden.co.uk)

All customers also receive 500GB secure online storage absolutely free of charge - never lose a document or picture again

No fix no fee. No call out charge.  
We beat any quote. Laptops repaired.  
Computers repaired. Custom built PCs. No job too small.

AWARD WINNING SERVICE | AWARD WINNING PCS



## REMOVALS

## David Mallett

REMOVAL, STORAGE & GENERAL HAULAGE

### HOME AND ABROAD

For a FREE quotation call

Mob: 0788 996 8064

Tel: 01832 731570

Local Friendly Service



## RETAIL



Morphy Richards mixer  
was £499.99 now £199.99

We also do knife sharpening,  
key cutting, a selection of  
cookware, light bulbs, glass  
bottling and preserving.

36 Market Place, Oundle,  
Peterborough PE8 4BE  
Tel/Fax: 01832 275414



## RESIDENTIAL CARE

### Rose Cottage Residential Care Home Woodford

We are a small care home with eight residents only.  
All rooms are single en-suite and ground floor.  
We provide respite care and day care.  
Telephone 01832 735417  
[www.rosecottagewoodford.co.uk](http://www.rosecottagewoodford.co.uk)



## PROPERTY

### VACANCY AT THE JOHN WHITE MEMORIAL HOMES HIGHAM FERRERS

Applications are now invited, preferably from married couples, for the occupancy of one of these dwellings, from persons who have had a period of residence within Higham Ferrers.

Applications must be made on forms which may be obtained from The Trust Secretary, Town Hall, Market Square, Higham Ferrers NN10 8BT and returned no later than 12 noon on 30th May 2014.

01933 312075

Previous applicants should re-apply.



## JOBS BOARD

### Jon Essam & Co Ltd

Chartered Accountants

#### Payroll Administrator

The role requires a person who has had recent experience processing payroll using Sage Software, preferably within an accountancy practice environment. Duties of the role will include dealing with all aspects of a weekly and monthly payroll. Calculating holiday pay, SSP, SMP and SPP. Maintaining Real Time Information requirements. Assisting with CIS Returns. Liaising with clients and HM Revenue & Customs. Must be able to work under pressure, be hands on and flexible in their approach to work along with good attention to detail. Hours and salary to be negotiated.

If you would like to apply for this position please send your CV to  
Jon Essam & Co Limited, 23 Cottingham Way,  
Thrapston, Northants, NN14 4PL or  
[info@essamca.co.uk](mailto:info@essamca.co.uk)



### NEW STAFF MEMBER

Experienced Level 3  
Early Years Practitioner required  
Part time  
Mon-Fri 8.30-12.30  
May lead to a permanent position  
in September  
Closing date 30 April 2014

For more information  
please contact Lisa on  
01780 783844

## TNT Post

Distributors needed to deliver  
Nene Valley News in your area

### Looking for some extra income?

We have vacancies for enthusiastic weekend workers

Door to door distributors required in Oundle & Higham Ferrers on Saturday/Sunday fortnightly.

For all vacancies, please call: 01933 626229 or email your details to: [christine.charlton@tntpost.co.uk](mailto:christine.charlton@tntpost.co.uk)

Please include name, address, telephone number and date of birth if under 18



## PUBLIC NOTICES

NORTHAMPTONSHIRE COUNTY COUNCIL  
ROAD TRAFFIC REGULATION ACT 1984 - SECTION 14  
THE NORTHAMPTONSHIRE COUNTY COUNCIL  
(LOWICK LANE, ALDWINCLE)  
(TEMPORARY PROHIBITION OF THROUGH TRAFFIC)  
ORDER 2014

NOTICE IS HEREBY GIVEN that Northamptonshire County Council intend, not less than seven days from the date of this Notice, to make an Order the effect of which will be to prohibit traffic from proceeding along that length of Lowick Lane, Aldwincle as set out below.

LENGTH OF ROAD TO WHICH RESTRICTION APPLIES: That length of Lowick Lane, Aldwincle from Main Street to Bulwick Lane footpath.

REASONS FOR RESTRICTION: The restriction is required during the removal of vegetation from power lines.

PERIOD OF CLOSURE: The proposed Order will come into effect on 29th May 2014 and will continue in force for a period of eighteen months. An application may be made for the approval of the Secretary of State for Transport for the Order to be extended if this proves necessary. However, the restriction specified will have effect only at such times and to such an extent as is indicated by the display of signs prescribed by the Traffic Signs Regulations and General Directions 2002.

EXPECTED DURATION: It is expected that the road will be restricted for one day.

ALTERNATIVE ROUTES: Use Main Street and Lowick Road.

Dated this 26th day of April 2014  
QUENTIN BAKER  
Director of LGSS Law  
PKG/T14/086  
If you require any further information please contact Gary Thorp on 01604-364359.

NORTHAMPTONSHIRE COUNTY COUNCIL  
ROAD TRAFFIC REGULATION ACT 1984 - SECTION 14  
THE NORTHAMPTONSHIRE COUNTY COUNCIL  
(HIGH STREET, DENFORD)  
(TEMPORARY PROHIBITION OF THROUGH TRAFFIC)  
ORDER 2014

NOTICE IS HEREBY GIVEN that Northamptonshire County Council intend, not less than seven days from the date of this Notice, to make an Order the effect of which will be to prohibit traffic from proceeding along that length of High Street, Denford as set out below.

LENGTH OF ROAD TO WHICH RESTRICTION APPLIES: That length of High Street, Denford from Church Lane and Childs Street.

REASONS FOR RESTRICTION: The restriction is required for installation of gas supply.

PERIOD OF CLOSURE: The proposed Order will come into effect on 19th May 2014 and will continue in force for a period of eighteen months. An application may be made for the approval of the Secretary of State for Transport for the Order to be extended if this proves necessary. However, the restriction specified will have effect only at such times and to such an extent as is indicated by the display of signs prescribed by the Traffic Signs Regulations and General Directions 2002.

EXPECTED DURATION: It is expected that the road will be restricted for up to four days.

ALTERNATIVE ROUTES: Use Midland Road, Bridge Street, Kettering Road, Woodford Road, Thrapston Road, High Street, Addington Road, Woodford Road, Main Street, Ringstead Road, Addington Road, Church Street, Denford Road and Ringstead Road.

Dated this 26th day of April 2014  
QUENTIN BAKER  
Director of LGSS Law  
If you require any further information please contact Gary Thorp on 01604-364359.

NORTHAMPTONSHIRE COUNTY COUNCIL  
ROAD TRAFFIC REGULATION ACT 1984 - SECTION 14  
THE NORTHAMPTONSHIRE COUNTY COUNCIL  
(MIDLAND ROAD, THRAPSTON)  
(TEMPORARY PROHIBITION OF THROUGH TRAFFIC)  
ORDER 2014

NOTICE IS HEREBY GIVEN that Northamptonshire County Council intend, not less than seven days from the date of this Notice, to make an Order the effect of which will be to prohibit traffic from proceeding along that length of Midland Road, Thrapston as set out below.

LENGTH OF ROAD TO WHICH RESTRICTION APPLIES: That length of Midland Road, Thrapston from Hawthorn Road to A14 Bridge.

REASONS FOR RESTRICTION: The restriction is required for demolition of bridge abutment and construction of retaining wall structure.

PERIOD OF CLOSURE: The proposed Order will come into effect on 26th May 2014 and will continue in force for a period of eighteen months. An application may be made for the approval of the Secretary of State for Transport for the Order to be extended if this proves necessary. However, the restriction specified will have effect only at such times and to such an extent as is indicated by the display of signs prescribed by the Traffic Signs Regulations and General Directions 2002.

EXPECTED DURATION: It is expected that the road will be restricted until 4th July 2014.

ALTERNATIVE ROUTES: Use Bridge Street, Kettering Road, Woodford Road, Thrapston Road, High Street, Addington Road, Woodford Road, Main Street, Ringstead Road, Addington Road, Church Street, Denford Road and Ringstead Road and High Street.

Dated this 26th day of April 2014  
QUENTIN BAKER  
Director of LGSS Law  
If you require any further information please contact Gary Thorp on 01604-364359.



## Tennyson Road Infant School

Highfield Road, Rushden, Northants NN10 9QD Tel: 01933 314161

Headteacher: Miss Caroline Hall B.A. Hons P.G.C.E NPQH

Email: [head@tennysonrd.northants-ecl.gov.uk](mailto:head@tennysonrd.northants-ecl.gov.uk)

### Open Day Tuesday 13th May, 2014

Do you have a child who will be 4 years old by 31st August 2014 or 2015? If so, they will be due to start school in September 2014 or September 2015.

Tennyson Road Infant School will be holding an Open Day on Tuesday 13th May. You are welcome to call in any time from 9.15am-11.15am or 1.15pm-2.15pm. You will be free to visit any of the classrooms and especially our Reception area where your child would start.

We run a Breakfast Club at school each

If you are unable to attend but would like to visit please call the school office to make an appointment.

01933 314161 or e-mail [bursar@tennysonrd.northants-ecl.gov.uk](mailto:bursar@tennysonrd.northants-ecl.gov.uk)

morning from 8.10am until 8.45am and most evenings there are after school clubs taking place including multiskills, choir, basketball etc. The Jackanory Mums & Tots group (0-5 years) is held in the school hall during term time on a Tuesday morning from 9.00-11.00. (cost £1.00 per family)

We are very proud of our school and of our recent Ofsted report - why not come along and see for yourself how good our school is!

We look forward to seeing you.



## THRAPSTON FARM AND GARDEN

23-25 Midland Road, Thrapston,  
Northants NN14 4JS  
Traditional Hardware Store

- Gardening Products & Tools • Tool Hire
- Rutland Electric Fencing • Key Cutting
- Wellingtons & Clothing • Paint • DIY • Pet Food

Seed potatoes, onions sets, peas and beans while stocks last

01832 732516 / 01832 735111



Spring Fair and Square offers in store now

Find us on Facebook

Come and find out about our exciting new product line:

FloodSax  
The modern sandbag



# Thrapston Town 0 – 3 Potton United

Chancery Lane, Monday 21st April



Thrapston's Cory James tackled by Potton's defence



Thrapston's Jedd Whiteman tussles for the ball against Potton

The game had a Bank Holiday end of season mood particularly for the first 45 minutes, where no goal attempts from either side were really worthy of comment. Both sides had half-chances but neither really stretched the keepers. An ill Stef Gatting was replaced at half-time by Kaine Clinton but the game continued in the same fashion until just after the hour when James Fitzgibson neatly curled a low shot around Thrapston keeper Liam

Fox to give the visitors the lead. One minute later and a similar move ended in Callum Forster doubling Potton's lead.

The third Potton goal was the best of the three, as a

curler again from Forster sailed into Fox's net.

Thrapston's day was summed up when Louis Dupree had a spot kick saved late in the second half.

## ChromaSport United Counties Football League results

21st April

United Counties League Premier				
AFC Rushden & Diamonds	4	–	1	Wellingborough Town
United Counties League Division One				
Irchester United	1	–	1	Bugbooke St Michaels
Raunds Town	2	–	1	Rothwell Corinthians
Rushden & Higham	1	–	1	Wellingborough Whitworth
Thrapston Town	0	–	3	Potton United

## Cricket fixtures

3rd May

Northamptonshire Cricket League Premier		
Oundle	v	Peterborough
Rushton	v	Finedon Dolben
Wollaston	v	Rushden
Northamptonshire Cricket League Division One		
Finedon Dolben 2nd	v	Irthlingborough Town
Old Wellingburians	v	Wellingborough Town

## Chess Corner

As spring arrives we find the Northamptonshire league drawing towards its conclusion. Kettering A are currently battling it out with Peterborough at the top of the Silver King Division I.

Corby are heading up Division II with Oundle School in a creditable third place. Rushden B are hot on their heels being only a point behind. New boy Tom Murts has made a good start in his first year in the league with a win on board 5 against Kettering C, giving a much needed boost to the team.

The County Championship for the Cole Trophy is being run for the first time in three years, at Kettering in May. Tel: 01536 482238 or email: [norchess@talktalk.net](mailto:norchess@talktalk.net).

In addition to the County Championships there are also internal tournaments held by local chess clubs. Rushden Chess Club is coming to the end of its tournaments for 2014. Now is a good time to join as clubs are keen to recruit new members for tournament and league games or just for fun!

For more information [rushdenchessclub.com](http://rushdenchessclub.com) & [http://www.norchess.lloydbunday.co.uk/league\\_table.html](http://www.norchess.lloydbunday.co.uk/league_table.html).

# TRADELL

(A trading name of Oundle Heritage Windows Ltd.)

Why choosing a local family business is important, just see what our customers have to say!

“Thank you for all the help and attention you have given us over the construction of the conservatory, we are both very pleased with the outcome.”  
Yours sincerely  
G.H (Oundle)

“We are very pleased with the finished work and would like to thank you all and in particular the fitting crew who were efficient, professional and courteous in carrying out the job.”  
Yours Faithfully  
Mr & Mrs G. (Wilbarston)

**YES!! We use Planitherm Glass as seen on TV!!**

Give us a call now for a free quotation:  
**01832 275790**

Windows,  
Doors,  
Conservatories  
in  
PVCu  
Timber  
Aluminium  
Steel

# TRADELL

(A trading name of Oundle Heritage Windows Ltd.)

Units 9 & 10 The Workshops, Barnwell Manor Estate, Armston Road, Barnwell, Peterborough PE8 5PL  
Fax: 01832 275786 [dweber@tradell.co.uk](mailto:dweber@tradell.co.uk)