



Oundle Classic Sprint

– Page 7



Duo raise £1,700

– Page 10



NEWS IN BRIEF

Changes to the Code of Conduct for Councillors

East Northamptonshire Council adopted a revised Code of Conduct for its Councillors on 6th October 2014.

You can view the revised code on the council's website www.east-northamptonshire.gov.uk – search for Constitution, the code is Part 5.1.

Some local town and parish councils have also adopted the same revised code and others are expected to follow. Please check out the relevant council website for further details of the code adopted.

Salvation Army open for prayer

Rushden Salvation Army, Church Street, Rushden are pleased to announce that The Sanctuary Prayer Room is now prepared for the Christmas season, so why not call in and pray the prayers of the carols?

It is open 9am to 2pm Monday to Friday and also during the Carol Service on Sunday 21st December at 6pm.

There will also be a Candlelight Service on Christmas Eve at 6pm at which all are welcome.

Children's writing competition – the results

We're delighted to announce the winners of the Nene Valley News children's writing competition and pleased to report a very good overall standard throughout the entries.

In the 6 to 9 age group first prize went to Maddy White for her piece 'The Udders of Great Addington', the runner-up was Ruby Wignall who wrote 'The Night of Terror' and third prize went to Mollie Verrion for 'The Missing Wish List'.

In the 10 to 12 age category the winner was Sammy Harrison with 'Meerkats Overrun Town', the runner-up was Milly Machinchy who wrote 'L'il Croc Saves Drowning Lion' and a third prize was won by Holly Fake for 'The Truth About Telepathy'.

In the age 13 to 15 group the judges were able to award only one prize and that went to Owain Derbyshire for his work 'Survivor Finds Artefact'.

The winners each receive a £50 voucher to spend in Colemans shops, the runners-up get vouchers worth £25 and the those in third place get £10 vouchers. Hopefully all the prizes will have been received before Christmas.

In this edition we are printing the winning entry in the youngest age group but all the stories listed above will be published over the next few editions, together with comments from the judges on each entry.

The judges said of 'The Udders of Great Addington' by Maddy White:

'an excellent portrayal of a lovely fictional adventure; there's potential to turn this story into an illustrated children's book with the further opportunity to develop the theme into a set of other fictional adventures.'



THE UDDERS OF GREAT ADDINGTON

Maddy and her friends Laura, Daisy, Lydia and Chloe were watching the news. "Calling, calling a herd of cows has been spotted in Irthlingborough. I'm not sure but I think they're heading towards Great Addington."

"Humph that is so not true, that news reporter Mr Lincon Lodds is never right," said Maddy.

The next morning was Sunday and Maddy was lying in, when she heard a faint Moooooooo in the distance. She got up, drew back her curtains and suddenly... MOOO right in her face cow spit everywhere! It was true. Cows in Great Addington. "URGH I wish I'd closed the window last night!" Maddy yawned.

"Breakfast sweetie pie," shouted Maddy's Mum. She got dressed and raced to the kitchen of their little bungalow. Maddy had a hard time eating her waffles and toast that morning. "Whats up honey?" Maddy's

Mum asked. "Hmm cows in Great Addington," Maddy muttered.

"Ha Ha Ha nonsense – aaaarrrrggggghh!" cried Mum as the door burst open and in came three or four cows, including the one Maddy had seen that very morning.

Maddy ran to her room and locked the door. She switched on her tablet only to find it not charged! She tried reading, too noisy. She tried playing with Lego, but the cow's stomping shook the ground making her model fall apart!

Maddy gave up. She decided to jump out the open window and leave for Daisy's house. Little did she know it was twice as bad there! Daisy had done the same thing and left for Chloe's house leaving Daisy's Mum Jess and two younger brothers James and Charlie behind. Maddy asked Jess to drive her to Chloe's. She said yes, so off they went.

At Chloe's house it was a lot lot quieter but smelt a whole lot more of cow plop, since some of the cows probably stayed there overnight on their way to Great Addington.

The girls went out in the garden just as another group of cows walked up. One cow was wearing a map around its neck with a big red arrow pointing to a village called...Great

Uddington!!!

"Um excuse me," exclaimed Daisy in her politest voice, "it's Great Addington!" The cow just looked confused and continued on its way.

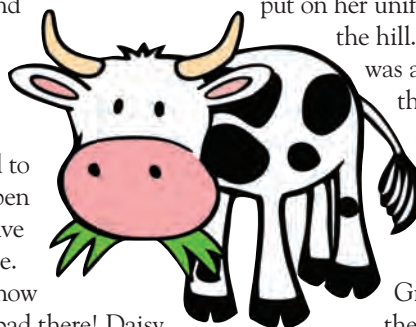
When Maddy and Daisy returned to Great Addington that night they found cows on the Addington playing field, the green, the church graveyard and even the school playground – all munching on grass.

The next day was school. Maddy put on her uniform and walked up the hill. In assembly there was a discussion about the cow problem. "You see children, it seems the cows were looking for Great Uddington and by mistake came to Great Addington, but they like the grass here so we think they are going to stay." It had been a long assembly and Maddy was relieved when Mr Meekings said, "Go to the playground for play."

From then on, the cows helped the villagers for ever more. When Years 5 and 6 learnt about farms the cows took lessons. The cows ate everyone's grass so nobody had to cut their lawns. They also gave riding lessons and provided free milk every week. The villagers and cows were friends for ever.

The End

By Maddy White age 7



COINS WANTED!

ALL WORLD COINS BOUGHT FOR CASH!

We need **Sovereigns & Krugerrands** & British silver coins dated pre-1947
Highest cash prices paid – no obligation

WANTED

We urgently need to buy for cash

All Silverware: Cutlery & Trays, Teapots & Jugs etc plus
Trophy Cups & Toast Racks, Photo Frames, Candlesticks +
We pay thousands of pounds for some items we need!
(We paid over £20,000 last week for one single trophy cup)

We deal in pre-1930 Dolls & Toys * Porcelain & Glass items.
Boxes of all kinds * Collectables * Inkwells & Fountain Pens
Medals & Badges * Corkscrews * Unusual Oddments * Scales
Postcards – plus... what have you that's interesting for sale?

Our expert professional buying team are at both
HIGHAM ANTIQUES & The **CRANBERRY HOUSE**
The High Street Higham Ferrers NN10 8BL
No appointment necessary or we can make home visits by arrangement
TEL: 01933 315400 Open most days – not Sundays 01933 319200
www.HighamAntiques.com wanted@HighamAntiques.com



JEWELLERY WANTED

URGENTLY REQUIRED!

Any condition as have own workshop.

GOLD SILVER OR COSTUME

Old or new – broken or perfect!
You may be surprised at our high offer!
No obligation – strict confidence.
www.highamantiques.com/sell-to-us.htm

We want to hear from you, so please submit your news story or event at www.nenevalleynews.co.uk

Lapwing by Gillian Day



Habitat restoration project is a great success for Nene Valley wildlife

Increasing numbers of overwintering birds have been sighted over recent weeks at Irthlingborough Lakes and Meadows Nature Reserve, owned and managed by the Wildlife Trust for Bedfordshire, Cambridgeshire and Northamptonshire (BCN), thanks to habitat improvements being made at the site.

With the help of funding from the SITA Trust and Heritage Lottery Fund, the Wildlife Trust BCN has been busy making important improvements for wildlife and visitors at the reserve which is a nature conservation site of international significance. Over the summer an island was created in one of the lakes to make an ideal habitat for ground-nesting

birds like common tern and lapwing. Shallow scrapes and pools have also been developed at the lake edge which support a wide variety of invertebrates and will provide important feeding areas for wading birds such as redshank and snipe.

Heather Procter, Nene Valley Project Manager at the Wildlife Trust BCN, said: "The newly created islands and scrapes have already proven to be very popular with many of the overwintering bird species that we are trying to attract to the site. It's so rewarding to see that our hard work is now starting to pay off."

"Hundreds of lapwing and wigeon can often be seen at any one time, as well as greylag and Canada geese, as they graze for food in the wet muddy lake edges. In recent weeks we have

also seen large numbers of starlings forming some impressive murmuration displays over the reserve before dusk, which is really very exciting."

The best places to see the new island, which is in 'Dragonfly Lake', are from the disused railway line and from the footpath around 'Wader Flats'. A map of the nature reserve can be found on the Wildlife Trust's website, www.wildlifebcn.org/reserves/irthlingborough-lakes-and-meadows.

If you are interested in getting involved with ongoing management of the nature reserve there are plenty of ways that you can help. Please contact the Wildlife Trust BCN on 01604 405285, email claire.wylde@wildlifebcn.org or visit www.wildlifebcn.org for more information.

Letters to the editor

If you would like to submit a letter to the editor please send it to news@nenevalleynews.co.uk for consideration. The maximum word count is 200 words.

Dear Editor

On 4th December, we held a Christmas Quiz at The Windmill Club in Rushden, raising money for Autism Concern. My husband Adam White wrote and hosted the quiz and we had a brilliant turnout. A total of £630.41 was raised for the charity with 11 teams taking part. We also had a raffle and would like to thank all companies that donated prizes, including a Kindle Fire from Redpalm Technology Services.

I am running the London Marathon for Autism Concern in April. I train with Rushden Runners who meet on Tuesdays and Thursdays at 6.30pm in the Splash Pool car park. My eight-year-old son Dylan has autism, and the charity do fantastic work!

My justgiving page is www.justgiving.com/vixrunslondon

Dear Editor

I read the letter on [Waitrose Oundle – Employee Parking] in the 6th December edition with much bemusement.

I live in Ashton Road, Oundle and either drive or walk along East Road every day, at differing times. I have not witnessed any increase in car parking in East Road since Waitrose opened. From my experience East Road has always suffered from over-parking. All legal parking areas have always been fully utilised by residents or non-residents. I do not understand how Waitrose employees can be accused of causing additional problems.

My problem with East Road focuses on the stretch of road between Ashton Road and Laxton School. This stretch seems to be continually occupied by parked cars belonging to employees of the Oundle School kitchens. Their virtual permanent occupancy of the road means it never gets cleaned. Also only one of the pair of speed humps here is ever crossed over by traffic, moving in either direction. This has resulted in excess wear and tear to the one speed hump and also to the approach road surfaces. The other speed hump is in pristine condition!

I think it is time to stop blaming Waitrose for everything negative that happens in Oundle.

David Cook, Ashton Road, Oundle

Dear Editor

Referring to the letter from the Oundle East Road Residents' Assoc. It would have helped the writer's cause more if they quantified the nature of the issue. How many cars do Waitrose employees have on average, how many are using the Waitrose car park and how many cars are they actually objecting to parking on public streets?

Since the town centre's limited time parking has been more rigorously enforced, I have noticed much more peripheral daytime parking, presumably by many people working in Oundle, not just Waitrose.

Geoff Harrop, Oundle resident

The views expressed in our Letters to the Editor are not necessarily those of Nene Valley News Ltd or any of its employees. Whilst we try to ensure the information provided is correct, mistakes do occur and we cannot guarantee the accuracy of the material.

46 Cartrill Street, Raunds, NN9 6ER

RAUNDS RAINBOW NURSERY SCHOOL

Free 15 hours or 11 hours per week

Free Entitlement:
Aged 2+
11 hrs 52 weeks
15 hrs 38 weeks

Ofsted Outstanding 2010/2011

Worth over £2000 per year
Reserve your place for next term

01933 624500
www.raunds.org

Come & visit us • Open 8 till 6 • Children from 2 years

The Foot Clinic
at
Images

128 Newton Road
Rushden
Northants

Rose Wesley
MCFHP MAFHP

All aspects of foot healthcare including:

- Nail Cutting
- Corn Removal
- Ingrowing Toenails
- Hard Skin Removal
- Fungal Nail Treatment
- Verruca Treatment

Home Visits Available

07854 814323
01933 318902

Want to place an advertisement or submit an article?

If you wish to contribute or have any comments please email news@nenevalleynews.co.uk or call 01522 513515. To advertise, call 01522 513515. Alternatively you can email advertising@nenevalleynews.co.uk

If you are not receiving your copy of Nene Valley News, please email distribution@km-media.co.uk or telephone 01522 513515.

If you would like to receive this publication as a download, Nene Valley

News is available online as a pdf at www.nenevalleynews.co.uk.

You can also subscribe to Nene Valley News for £39 per annum.

Nene Valley News is produced for Nene Valley News Ltd, registered office Unit 4, Eastwood Road, Oundle PE8 4DF, by their agents KM Media & Marketing, County House, 9 Checkpoint Court, Sadler Road, Lincoln, LN6 3PW.

Copy dates for Nene Valley News

Publication date: Saturday 17th January
Articles to the editor by: Wednesday 7th January

Publication date: Saturday 31st January
Articles to the editor by: Wednesday 21st January

km
KM Media & Marketing
Your partner in publishing
ONLINE | IN PRINT | IN DIGITAL

Rushden Golf Club

LUNCH TIME SPECIAL 2 FOR £10
Looking for somewhere new to eat at lunchtime? With its pleasant surrounds and easy parking, why not enjoy a meal at Rushden Golf Club?

Our 2 for £10 special covers a range of popular meals.

Prefer a lighter bite? Then we also have a choice of teacakes, sandwiches, baguettes and jacket potatoes.

Open from 10.30am
Rushden Golf Club, Kimbolton Road,
Chelveston, Wellingborough, Northants, NN9 6AN
01933 418511
www.rushdengolfclub.org

ABC carpet cleaning co

Quality Professional Carpet & Upholstery Cleaning

FREE no obligation quotations • Knowledgeable advice given
Fully trained staff • Fully insured • All work guaranteed
Cleaning carpets, rugs & upholstery
Specialist Oriental & Chinese rug cleaning
Stain removal & protection • End of tenancy cleaning
Open 7 days per week • 24hr Emergency call out
Flood damage/recovery • Eco friendly products used

ABC Carpet Cleaning Co, 9 Hyacinth Way, Rushden Northants NN10 0UR
Tel: 01933 450047 Mobile: 07449 622188
andrew@abccarpetcleaning.co.uk

www.abccarpetcleaning.co.uk

Mark Hunter comes to Oundle Town Rowing Club

On Friday 28th November, the Olympic Medal winning rower Mark Hunter paid a visit to Oundle Town Rowing Club on the River Nene.

Mark, who won Gold in his lightweight double at Beijing in 2008 and Silver in London in 2012, came to provide expert coaching and advice to a group of young rowers.

The rowers were 11–16 year olds from Lodge Park Academy (part of the David Ross Education Trust). The youngsters have been receiving rowing coaching from Oundle Town Rowing Club's Outreach Programme for over a year – on indoor rowing machines in the winter and on the water at the Club's facilities on the Nene during the summer term.

The group of Year 7–11 pupils competed against other Academy schools in the Trust and received the visit from Mark as a prize for winning the indoor rowing competition.

A great, but all too short, afternoon was spent on the water, with the pupils enjoying some top class tips on rowing techniques. Thank you, Mark!



Mark Hunter at Oundle Town Rowing Club

Over £50,000 raised by Swivel Club

As a charity which raises money for local good causes for some considerable years, the Higham Ferrers based Swivel Club (registered local charity No 1138750) has managed to raise and redistribute over £50,000 pounds back to the local community.

Hosting regular music events has been the key to unlocking the local fundraising, as well as support from local businesses. More visibility online and through social media has helped to raise the profile of the charity too.

The money raised has helped those locally with cancer, MS, motor neurone disease and other debilitating diseases. It has helped other

groups in need of funds like Macmillan nurses, Cransley Hospice and Rowan Gate School.

Funds have also been used to buy specialised equipment like lifts, hoists and wheelchairs. The club has even sent a group of disabled young people from Wellingborough on holiday to Blackpool.

Colin Wright, Swivel Club Chairman said: "I'm thrilled with how well the fundraising has gone recently. We are now raising significant amounts on a regular basis that can really make a difference. It makes me proud to see the people the club has helped being able to get on with their lives thanks to a little bit of help. Our projects are getting more

adventurous, like our work with Alpha Pre-School and we want to do more within our community. I have to thank all our regular supporters because without them we couldn't do what we do."

The Swivel Club works closely with Rushden Bowls Club, who assist by providing a venue for all kinds of entertainment. For those who want an evening of good music and fun, without having to spend a fortune, all contained within great surroundings, it is the perfect answer!

With the support from local people the Swivel Club really is able to 'turn lives around.'

For more information or to book tickets go to www.swivelclub.com.

East Northamptonshire residents keep landfill levels low

Thanks to the recycling efforts of residents, East Northamptonshire has been rated as one of the best in the country for low landfill levels.

The Department for Environment, Food and Rural Affairs (Defra) released a report this month confirming East Northamptonshire is in the top 10 for the Lowest Household Waste Generation per Head (2013/14).

Collected household waste for East Northamptonshire came in at 292kg per person, with the lowest in

the whole country at 255kg. The next best result in Northamptonshire came from Northampton Borough Council at 357kg per head, more than 65kg heavier than in this district.

Steven North, Leader of East Northamptonshire Council, said: "This is great news. Thank you to everyone for helping to achieve these excellent results. Your support really does matter and is making a real difference. We're now asking our residents to rise to the challenge and recycle even more of their waste, by ensuring that they don't put

anything into their grey-lidded bin which can be recycled."

In 2011, the Council launched a new rubbish and recycling scheme which, amongst other changes, saw residents receive larger bins for recyclables. It is believed that changes in the service, including a bigger opportunity to recycle, have contributed to this result.

For more information about refuse and recycling, visit www.east-northamptonshire.gov.uk/waste, email waste@east-northamptonshire.gov.uk or call 01832 742026.

Visit your local

DB Factory SHOE SHOP

FOR THE LARGEST SELECTION OF SHOES IN YOUR AREA

BEST VALUE IN YOUR AREA!

We stock Men's and Ladies' boots, shoes and slippers, as well as Children's styles including football boots and wellies!

Brands include: Marco Tozzi, Heavenly Feet, Skechers, Earth Spirit, Dr Keller, Natureform and Dr Martens

Opening times: Monday to Saturday 10am-5pm Sunday 10am-4pm

Address: DB Shoes Ltd, 19-21 Irchester Road, Rushden, Northants, NN10 9XF

www.dbfactoryshop.co.uk

WIDE FEET?

Then why not VISIT OUR SPECIALIST SHOE FITTING CENTRE where our team of experienced shoe fitters will help you choose the style of footwear that is suitable for your needs!

Telephone: 01933 410 305

Opening times: Monday to Saturday 10am-4pm

www.widerfitshoes.co.uk

FREE ROADSIDE PARKING

Plus get an additional **10% OFF** (excluding sale items) when you bring this advert and quote code NV4114. Offer valid in both shops until 30th January 2015

THE ROCK FOUNDATION YOUTH CLUB

Charity No. 304242

During 2015 the Trustees will be considering the distribution of small grants to youth groups and individuals for developmental activities.

For information and application form please telephone:- The Secretary The Rock Foundation 01933-314457

DODSON & HORRELL COUNTRY STORE

Dodson & Horrell Feed Specialist for over 70 years

Open hours Mon-Sat 8.30-5.30 Sun & Bank holidays 9.00 - 2.00 Tel 01933 461539 1-2 Spencer Street Ringstead, Kettering, NN14 4 BX www.dodsonandhorrellcountrystore.co.uk

HAC-TAC

Complete range of Dodson & Horrell feeds Countryside range, Horse, Chudleys dog feed Manor farm Granaries caged & wild bird feed Raptor feed & small animal feed & accessories Everything for the Horse & Rider Poultry feeders & drinkers Electric Fencing, Stable Equipment Excellent range of fishing equipment plus over 400 baits to choose from Gift area equestrian jewellery, Bryn parry Fishing & shooting gifts fresh cakes, honey, pies, preserves & Faringtons mellow yellow

FOX **ESP** **MIDY** **MARUKYU** **Sensas** **UK** **WATER** **GURU**

action2mobility.co.uk

Action²Mobility

THE REGION'S LEADING MOBILITY AID CENTRE

10% OFF BRING THIS AD WITH YOU AND GET 10% OFF ANY PURCHASE*

* MINIMUM PURCHASE £10. OFFER ENDS 14.04.2013

'BOOT' SCOOTERS

FROM ONLY **£595**

RECONDITIONED SCOOTERS AVAILABLE

ELECTRIC RECLINERS

TRI-WALKERS

FROM ONLY **£49.99**

STAIRLIFTS

FULLY GUARANTEED

FREE HOME SURVEY

COSYFEET FOOTWEAR

LARGE STOCK: SHOES & SLIPPERS

FOR SWOLLEN & TROUBLESOME FEET

ADJUSTABLE BEDS

FROM **£795**

CALL FREE: 0800 698 2588 **MON-FRI 8AM-4PM** **FREE PARKING**

SHOWROOMS: 69-71 WASHBROOK RD · RUSHDEN · NORTHANTS NN10 6UR

Merry Christmas 2014 in East Northamptonshire



CHRISTMAS AT COLEMANS

Colemans has been in business in Northamptonshire for more than 45 years.

Whilst many other businesses in our local High Streets have come and gone, Colemans has continued to survive and thrive by offering exceptional customer service and a fantastic range of products at highly competitive prices.

If you are looking for a gift this Christmas, then look no further than Colemans.

In your local town, with a superb selection of children's craft and activity sets, traditional gifts such as jigsaws and games, beautiful art materials and high quality fountain pens and Filofaxes. You are welcome to browse at leisure – there really is something for all the family.

And you don't even have to worry about carrying your shopping home – Colemans offer free delivery in their own vans at your convenience – and even have a free gift wrapping service in December! They really have thought of everything!

But if you really can't choose then consider giving a Colemans gift voucher, available in any value and redeemable at all Colemans branches – including the Oundle Bookshop – where you can also purchase National Book Tokens.

If you want to buy locally this Christmas – and from a "real" shop from people who really care about their customers – then look no further than Colemans. Traditional gifts which are great value – in lovely surroundings with a truly festive feel.

And don't forget Colemans Craft Warehouse – a 5000 square foot Aladdin's cave of craft and hobby products at fantastic prices just off the A45 at Higham Ferrers.

And finally, The Oundle Bookshop is also part of the Colemans "family". A rare treat – a wonderful traditional bookshop in the middle of the historic town of Oundle. In addition to a superb selection of books in categories like cookery, biography, history, gardening, humour and travel, they also stock some really original gifts and greetings cards.

So this Christmas Colemans have it all wrapped up!

CHRISTMAS @ THE KINGS ARMS, THRAPSTON

New Year's Eve – An Evening of Jazz

We will be serving our usual menu, throughout the pub, book early to secure a place in the restaurant! The Fabulous Katherine McLean will be providing the entertainment in the bar, a wonderful up and coming jazz singer featuring hits from throughout the eras, performing in the bar from 8.30pm through to midnight!

Open & Serving Food

Throughout the Christmas Period we will be serving food every day.

Boxing Day

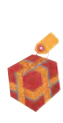
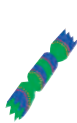
Three courses £22.50, booking and pre-ordering essential, with real Boxing Day treats on the menu such as Honey Roasted Ham & Sticky Toffee Pudding! All Fresh Homemade Food.

For the remainder of the Christmas period we will be serving our usual menu served in the bar and our restaurant. Booking recommended throughout the festive season.

Real Ales

Here at The Kings Arms we are passionate about serving great quality ales. We source our ales from a range of suppliers, with local and national ales available.

The Kings Arms



With **FREE LOCAL DELIVERY** & **FREE GIFT WRAPPING** (during December)



• Bedford
78 High Street,
T: (01234) 328891

• Higham Ferrers
28 High Street,
T: (01933) 314600

• Huntingdon
107 High Street,
T: (01480) 450304

• Kettering
9-11 Newland Street,
T: (01536) 410261

• Northampton
34-36 St Giles Street,
T: (01604) 636708

• Oakham
46 High Street,
T: (01572) 770883

• Oundle
10 New Street,
T: (01832) 272868

• Peterborough
12 Cowgate,
T: (01733) 343201

• Stamford
1-2 St Pauls Street,
T: (01780) 762324

• Towcester
193 Watling Street
T: (01327) 350435

• Kettering
9-11 Newland Street,
T: (01536) 410261



CHRISTMAS CELEBRATION FOR LOCAL CHARITY SERVE

Tuesday 9th December 2014 marked the seventh year the local community has come together to celebrate its local charity, at the 'Sing for Serve' annual Christmas Carol Service, held at Park Road Baptist Church in Rushden.

It was two hours of hymns, sketches and performances from local talented young people. Mike Neville was compere and introduced each performance from local schools including Southend Infants, Whitefriars Infants, Risdene Academy and The Rushden Academy Folk Band. It was a mixture of Christmas songs

and classic modern songs.

Mike Neville's talented granddaughter Ellie McAspurn, only 11 years old, sang songs from Les Misérables and the popular Disney film Frozen. Ellie won The Rotary District 1070 Young Musician of the Year Junior Singer and is currently training at a theatrical dance and singing school in the West End.

The Salvation Army 60s Club Band played throughout the hymns and performed some wonderful Christmas instrumentals.

Every year the Susan Hollowell Memorial Trophy is awarded to a community volunteer for their outstanding efforts in supporting the local community. Volunteer Rick Watson, pictured, was

awarded the trophy this year for his volunteer work with Serve as a minibus driver and escorting local people on day trips and essential supermarket shopping trips.

Barbara Nichols, Serve's volunteer receptionist was nominated and received a certificate for her commitment and hard work; a further six volunteers in the local community were also nominated. This is the thirteenth year the Susan Hollowell Memorial Trophy has been awarded to a volunteer in the local community and it is through the efforts of everyone involved with the organising of this annual event that this can be celebrated. Serve provides homecare,

transport services, well-being activities including day trips, shopping trips, IT training, mobility aids and various other activities in the community of East

Northants. If you would like any further information on any of the services please contact the Serve Head Office on 01933 315555 or email info@serve.org.uk.



Diane Eaton, Rick Watson, Nicky Brinkworth, Jessica Slater

CHRISTMAS GREETINGS

**Merry Christmas
to all our
customers from
Whistl - your
deliverers of
Nene Valley News**



KM Media & Marketing

**Merry Christmas
from everyone at
KM Media & Marketing**



**Wishing all of our customers
a Merry Christmas and a
Happy New Year.**



**Thanking all of our new and
regular customers for their
support and wishing them
a Merry Christmas and a
peaceful New Year.**

83-85 Brook Street,
Raunds, Northants,
NN9 6LL

**RAUNDS
HARDWARE
&
PET SUPPLIES**

01933 626261
Mon - Fri 8:30am - 5:30pm
Sat 9:00am - 5:00pm

**WISHING ALL OUR
CUSTOMERS A MERRY
CHRISTMAS AND A
HAPPY NEW YEAR**

KEEP IT LOCAL!



THE KINGS ARMS THRAPSTON



Pub & Restaurant

Freshly prepared, homemade food
and quality local ingredients

Christmas Parties

Few spaces left! £25pp three courses of delicious homemade festive food. Served in the restaurant, bookings only.

Restaurant

Open throughout December, why not treat your self to a great night out, booking always recommended.

Boxing Day

Sit down 12.30pm enjoy a wonderful three course meal for only £22.50pp save on the stress and the washing up! Limited availability book soon!

Dine in the Bar or Restaurant

59 High Street, Thrapston 01832 733911

Please remember to visit: www.kingsarmsthrapston.co.uk

WELLINGBOROUGH PANTOMIME SOCIETY
PROUDLY PRESENTS...

**Dick
Whittington
AND HIS MAGICAL CAT**

20TH - 25TH JANUARY 2015

AT THE CASTLE

CALL THE BOX OFFICE AND BOOK YOUR TICKETS TODAY
ON 01933 270 007 OR BOOK ONLINE AT WWW.THECASTLE.ORG.UK



East
Northamptonshire
Council

Notice of planning applications received

Notice is given that the following applications have been received together with the last date for making representations:

Benefield

14/02262/FUL (03/01/2015) (Info) To strip the complete Collyweston roof. To felt roof using Permo Forte breathable felt and tanalised battens. To tile roof using new tiles – colour to match the roof of no. 35 next door at Grey Stones Cottage 33 Main St Upper Benefield PE8 5AN

Glaphthorn

14/02294/FUL (03/01/2015) (Info) Rear single storey extension and alterations to existing windows after removal of garden room at Longfield House Main St Glaphthorn PE8 5BE

Harringworth

14/02230/FUL (03/01/2015) (Info) Proposed extension to existing garage to accommodate studio and replacement log store at Shotley House Shotley Harringworth NN17 3AG

Higham Ferrers

14/02254/VAR (03/01/2015) (Info) Variation of condition 3 – plans amended to include a permanent structure enclosing the external escape stair pursuant to application 14/00234/FUL – ‘Two storey rear extension to commercial premises (care home)’ at 50 North End Higham Ferrers NN10 8JB

14/02257/VAR (03/01/2015) (Info) Removal of condition 7 – footpath details pursuant to application 10/00499/OUT: ‘Outline: Redevelopment of land and premises for up to 36 dwellings (all matters reserved)’ dated 27.11.14 at The Midland Business Centre Midland Rd Higham Ferrers NN10 8DN

Irthlingborough

14/02300/FUL (03/01/2015) (Info) Erection of single storey rear extension with balcony above at 126 Addington Rd Irthlingborough NN9 5UP

Islip

14/02297/FUL (03/01/2015) (Info) Proposed first floor bedroom extension at Elmsley 8 Old Farm Lane Islip NN14 3LY

Kings Cliffe

14/02186/FUL (10/01/2015) (Info) (Art8) Toilet facility for visitors at 27 Bridge St Kings Cliffe PE8 6XH

Nassington

14/02259/FUL (03/01/2015) (Info) Demolish existing garage and build detached dwelling and garage using existing access. Form new vehicle access from Church St for existing dwelling at 62 Church St Nassington PE8 6QG

14/02301/FUL (10/01/2015) (LB/CA) Demolish existing double garage and shed and construct detached dwelling with single garage. Form new vehicle access for existing dwelling with double garage at 35 Church St Nassington PE8 6QG

14/02302/LBC (10/01/2015) (LBRegs) Demolish existing double garage and shed and construct detached dwelling with single garage. Part demolition of front boundary wall to form new vehicle access for existing dwelling with double garage at 35 Church St Nassington PE8 6QG

Raunds

14/02170/FUL (03/01/2015) (Info)

Infill extension to link two warehouse units at M C ODonnell Joinery Enterprise Rd Raunds NN9 6JE

14/02287/FUL (03/01/2015) (Info)

Amended house type of plot F pursuant to application 14/00962/FUL: ‘Erection of six dwellings (part re-application of planning approval 11/00573/FUL); new access; highway works to junction of Brook St; part demolition of No 43 Brook St’ dated 15.07.2014 at 45 Brook St Raunds

14/02295/FUL (03/01/2015) (Info) Proposed single storey extension to rear of existing semi detached dwelling with internal alterations at 52 London Rd Raunds NN9 6EJ

14/02296/VAR (03/01/2015) (Info) Variation of conditions 22 – amended design – pursuant to planning permission 14/00358/FUL dated 24.4.14 – Construction of 2 no. semi-detached dwellings on land adjacent to existing dwelling at 47 Holmes Avenue Raunds NN9 6SZ

Rushden

14/02046/FUL (10/01/2015) (LB/CA)

Proposed change of use from home office in domestic garage space to (B1) Offices at 20 Griffith St Rushden NN10 0RL

14/02096/FUL (03/01/2015) (Info) To convert garage into a home office development and garage door to be replaced with the same size glaze door at 18 Tees Ave Rushden NN10 0GZ

14/02118/ADV (03/01/2015) (Info) A circular GE Corporation logo sign x 2 at 2 Spire Rd Rushden NN10 0FN

14/02228/FUL (03/01/2015) (Info) Demolition of existing building and erection of five detached dwellings pursuant to planning permission 13/01585/FUL at High Beech 8 Hayway Rushden NN10 6AG

14/02255/FUL (03/01/2015) (Info) First floor extension to existing offices and stores, new roof construction above at Unit 14 Norris Way Rushden NN10 6BP

14/02258/FUL (03/01/2015) (Info) Front porch at 53 Allen Rd Rushden NN10 0DY

14/02288/FUL (03/01/2015) (Info) Conversion of former King Edward public house to form six residential apartments at King Edward VII 158 Queen St Rushden NN10 0AZ

Thrapston

14/02279/FUL (03/01/2015) (Info) Proposed single storey extension to provide a hobby room and garage for a disabled person at 19 Washington Court Thrapston NN14 4TF

Titchmarsh

14/02292/FUL (03/01/2015) (Info) Demolition of existing sanitary accommodation and erection of new sanitary accommodation and meeting room at 19 High St Titchmarsh NN14 3DF

The reason for applications being advertised is as follows:

Art8 – Town and Country Planning (General Development Procedure) Order 1995.

Info – Non-statutory – included for information only.

LB/CA – Planning (Listed Buildings and Conservation Areas Act 1990.

LBRegs – Planning (Listed Buildings and Conservation Areas) Regulations 1990.

David Reed

Head of Planning Services

Dated 20 December 2014

Santa's little helpers begin their good deeds

Staff from Spire Homes and Keepmoat have taken the season of goodwill to heart this year and played Santa's little helpers to deliver the first of their 12 Good Christmas Deeds.

Nominations had been collected from the public with the final few selected at the end of November. People relished the chance to recognise unsung heroes and spread extra Christmas cheer in their community. The first four deeds were delivered to the lucky few who had made it onto the final ‘nice’ list.

Sharon Boot, Customer Engagement Officer at Spire Homes said: “We were really overwhelmed with the nominations for our 12 Good Christmas Deeds. There were some lovely suggestions. Spire Homes is all about building stronger communities so it’s great to be giving a little something to those who are going the extra mile to make a difference as well as doing something for community groups to make their Christmas special.

It’s great to be working with our contractor Keepmoat on this as well; we share a passion for making a difference and Christmas is the perfect time of year to do just that.”

First to receive a good deed were staff at Cando Care in Raunds. The not-for-profit organisation provides day care for elderly and vulnerable people in the local community. The group is run by two qualified carers and lots of volunteers who provide a hot meal and activities five days a week. A hamper filled with tea, coffee, sugar, hot chocolate, biscuits and cakes, were given to the volunteers in recognition of their dedication to supporting others in their community.

Maria nominated the volunteers to receive a good deed. “I work with a lot of people in sheltered accommodation in the area and I know that Cando Care is a lifeline for so many in the community. The people there are fantastic, they have loads of energy and are always willing to go the extra mile to make a difference. I hope the hamper gives them a chance to enjoy some time to sit down with a good cuppa, have a good chat and relax.”

Second was Sharon, a nurse at the Harborough Fields Surgery who was nominated by one of her patients, Roger, for the excellent, caring service she gives to everyone. Sharon received some flowers as a special thank you for her dedication to her patients.



Cando Care Raunds



“Sharon has always been a wonderful nurse,” said Roger. “She’s battled through adversity to maintain a fantastic service that’s warm and friendly, which is just what you need when you have to go to the doctors. I’m delighted Spire Homes and Keepmoat have been able to do a good deed for Sharon. She thoroughly deserves it.”

The third good deed was delivered to the Rushden Veterans Companions and Friends Group’s Christmas party. The group was set up for veterans of WW2 and the younger generation to meet up once a month for coffee and a chat, encouraging people who live on their own to meet others and give them a sense of companionship. Spire Homes and Keepmoat were able to add an extra bit of festivity to their party with a visit from Santa, played by Spire Homes Chairman, John Farrar, who came prepared with after dinner chocolates for everyone to enjoy.

Anna, who runs the group, explains her nomination: “Our veterans really enjoy Christmas so I wanted to try and organise something a little special for them. A visit from Santa and some after-dinner sweets have added a lovely finishing touch to the party. I’m really grateful to Spire Homes and Keepmoat for their good deed, it’s a lovely surprise.”

A final good deed on the day was to deliver a beautiful bouquet of flowers to Lissette who was nominated for her tireless work to look after others.

“Lissette definitely deserves a good deed,” said a neighbor, Marion, who put in the nomination. “She is all about looking after others; she cares for her uncle and dad whilst juggling working in a crèche full-time. It doesn’t matter when they need help, she’s always available. My grandson goes to the crèche and I know she does a brilliant job there. I think this deed is a lovely way to show Lissette how much she means to people; thank you Spire Homes and Keepmoat.”

Julie Baker, Community Liaison Manager at Keepmoat said: “Keepmoat always look at how they can make a difference in the community. Working with Spire Homes we’ve done numerous schemes to help people find work with training and apprenticeships. Now our 12 deeds have given us a chance to bring a little extra cheer to the community and meet people who are going the extra mile every day.”



The Rushden Veterans Companions and Friends Group

Consultation deadlines will differ for each application. Please go to www.east-northamptonshire.gov.uk/planningapplications for details.

Oundle Classic Sprint

On Sunday 28th December, the centre of the historic market town of Oundle will reverberate to the sound of racing engines as the inaugural Oundle Classic Sprint gets underway. Over 140 entries have been received for what is believed to be the first ever motorsport event to take advantage of the change in the law that allows public roads to be closed and speed limits suspended.

With the full cooperation of the local council, roads around the picturesque Northamptonshire town will be closed to allow over 100 classic cars and motorbikes to make demonstration runs over a quarter-mile course. This family day out will also include a children's funfair, trade stands and displays of classic cars and will raise money for local charities and Help for Heroes.

Six months in the planning, the Oundle Classic Sprint has been jointly created by two local motorsport enthusiasts, Quentin Nicholls of Qprep and Paul Kneeshaw of Lunar Training, and was triggered by the law change.

"We thought it would be brilliant to run cars through the streets of Oundle and raise money for charity," says Nicholls, Course Director of the Sprint. They were quick off the mark and believe that the Oundle Classic Sprint will be the first event to run on derestricted public roads since the law change. "It's not the Birmingham Superprix," says Kneeshaw, who takes on the role of Event Director, "but we have been overwhelmed with the level of interest and impressed with the quality of the entries."

Gaining Government approval to close roads is only half of the job, though, because it's the local council that has to give permission to suspend the speed limits. Happily, Oundle Town Council could see the benefits of the sprint and was confident that the town could cope with closed roads – it successfully hosted the Women's Tour cycling event back in May. An early supporter of the sprint was local councilor Moira Clark, a resident of North Street, which forms part of the sprint course.

Despite limited exposure, over 100 entries were received within a month and now include a 1908 Daimler Grand Prix car, a Panther M100 motorbike, a Lola T70 and even a racing sidecar outfit. Entries should be of historic



significance or interest, and the organisers will allocate places on this basis. On the day, cars and bikes will run in four classes:

- Class A – pre-1960
- Class B – post-1960
- Class C – racing machines of all eras
- Class D – rally machines of all eras

The first run will be at 11am and it's hoped that all competitors will get two runs, with the last batch – the rally cars – leaving the line lights ablaze, just as darkness has fallen. Safety is the key concern and there will be no timing of runs while, as at The Goodwood Festival of Speed, the course will be laid out with straw bales and metal barriers. MSA (Motor Sports Association) approved marshals generously supplied by the Peterborough Motor Club will administer the event.

The paddock area will be in New Street and West Street and will be open to the public, allowing them to see all the fabulous cars and bikes close up and talk to their



owners and drivers. There will be trade stands too and St Osyth's Lane just off the Market Place will host a children's funfair.

The ambition of the organisers is that if

the event is a success it will run in 2015 as a fully sanctioned and timed MSA event.

For more details visit www.oundleclassicsprint.org

Sponsored by Oundle Carpet Weavers – supporting the inaugural Oundle Classic Sprint



OUNDLE CARPET WEAVERS
MANUFACTURERS OF FINE CARPETS

Christmas crackers for Oundle's seniors

Scores of local people are looking forward to more 'Munch Club' events in 2015 following a successful past year which culminated with the annual Christmas Lunch staged at Oundle

and King's Cliffe Middle School. Father Christmas handed out goodies to the diners while the school's choir and musicians entertained them with a selection of festive songs.



The event marks the second anniversary of the Oundle Munch Club, which is sponsored by Age UK and the local Waitrose store in Oundle through its Green Coin Scheme. "It is wonderful to be able to host so many older members of the community at events like this," commented the organiser Sarah Lee. "We are so fortunate to have such good helpers for these lunches and we're so grateful to Age UK and Waitrose for their support and encouragement," she added. The meal caters for elderly and disabled folk in Oundle and the

surrounding villages. Future lunches will be held at the Middle School in Oundle

on Monday 19th January, Monday 9th February and Monday 16th March 2015.

If you would like to attend, please contact Pat Bird on 01832 275353.

Oundle CE Primary School Nativity play

Oundle CE Primary School has been staging an alternative production of the Nativity play this year – traditional with a modern twist! 'Whoops-A-Daisy Angel' is the story of an angel who is different from the rest. She makes mistakes, is forgetful, clumsy and dresses untidily. Because she is not as perfect as all the other angels, she only gets simple and monotonous jobs to do. However, she has a heart of gold and never complains, so one day she is given a very important job to do and manages to do it perfectly; she has to spread the word about the new baby Jesus. The play was staged in a packed St Peter's Church in front of proud parents and relatives

and the cast did a great job, reflecting all the hard work of the pupils and staff during rehearsals.



Have a merry and safe holiday

Christmas and New Year is the perfect time to indulge in lots of food and drink! We want you to stay safe while you celebrate so please take a few minutes to read through our top tips for a safe and happy Christmas and New Year celebration.

- Don't drink on an empty stomach:** eat before you go out – a full stomach absorbs alcohol more slowly, reducing the chance of vomiting.
- Plan your journeys in advance:** book a taxi or arrange a lift before you go out. Store taxi and contact numbers in your phone in case your plans change.
- Have a plan B if you're driving:** it's easy to get swept up in the atmosphere, so make an advance taxi booking or ensure you can stay at a hotel or friend's house in case you do decide to drink.
- Stay close to friends:** don't let them wander off on their own, especially if they've had a lot to drink.

- Don't leave your drink unattended:** drinks can be spiked with drugs or extra alcohol, so keep an eye on your drink and don't accept drinks from people you don't know.
- Top up with water:** if you're drinking alcohol, have a glass of water between drinks and before you go to bed.
- Pace yourself:** everyone has a different tolerance for alcohol, so don't be pressured into keeping up with other people who are drinking more than you.
- Give yourself a break:** you might feel slightly weary the morning after you've been drinking, so allow your body to recover by steering clear of alcohol for 48 hours.

A lot of these tips are just common sense, but it never hurts to remind yourself and others around you to stay safe this New Year, and for the rest of 2015.

The following organisations can provide more information or advice about alcohol safety:

Organisation	Contact details
Alcoholics Anonymous	08457 697555 / www.alcoholics-anonymous.org.uk
Drinkline	0800 917 8282
NHS	www.nhs.uk/units
Service Six	03332 400716 / help@servicesix.co.uk
FRANK (Advice on drugs and alcohol)	0800 123 6600 / www.talktofrank.com
Community Safety Team	01832 742204 / communitysafety@east-northamptonshire.gov.uk

ENC opening times over Christmas and New Year

The East Northamptonshire Council office in Thrapston and Customer Service Centres at Thrapston, Rushden and Oundle will close for Christmas on Wednesday 24th December 2014 and will reopen on Monday 5th January 2015.

The closing/opening times for each Customer Service Centre are:

Customer Service Centre	Closes 24/12/14	Reopens 05/01/15
Thrapston, Cedar Drive	5pm	8.45am
Rushden, Newton Road	4.30pm	9am
Oundle, Oundle Library	1pm	10am

Irthlingborough Library – no council service on Wed 24th Dec 2014, reopens on Wed 7th Jan 2014.

You can access many of the council services at www.east-northamptonshire.gov.uk

You can still pay council bills on the payment line (24 hours) on 01832 742259.

If you have an urgent problem which cannot wait, you can call the out-of-hours service on 01832 733530.

Bin collections over Christmas and New Year

East Northamptonshire Council is reminding residents that for Christmas and New Year, there will be some changes to normal bin collection dates.

Because of the way the bank holidays fall over this year's Christmas and New Year period, some collections will be made earlier than the usual day and some later.

Normal collection day	Revised collection day
Monday 22nd December	Saturday 20th December
Tuesday 23rd December	Monday 22nd December
Wednesday 24th December	Tuesday 23rd December
Thursday 25th December	Wednesday 24th December
Friday 26th December	Saturday 27th December
Monday 29th December	Monday 29th December*
Tuesday 30th December	Tuesday 30th December*
Wednesday 31st December	Wednesday 31st December*
Thursday 1st January 2015	Friday 2nd January
Friday 2nd January	Saturday 3rd January

***PLEASE NOTE: Monday 29th, Tuesday 30th and Wednesday 31st December are the only days collected as normal.** Please ensure the correct bin is out on the changed collection day.

Remember to use your food recycling caddy for your turkey carcass and other Christmas food waste.

Garden Waste Service bins will not be collected between 20th December and 4th January.

Any requests for household bulky waste collection received before 3pm on 22nd December will be guaranteed before Christmas. Requests received after this date will be arranged for collection in the New Year.

To find out your bin collection day, visit the waste and recycling page.

If you have any questions about bin collections over the holiday period, email customerservices@east-northamptonshire.gov.uk or call 01832 742026.

Consultation gets underway on proposed changes to marriage and civil partnership registrations

People in Northamptonshire are being invited to have their say on proposed changes to the availability of statutory marriage and civil partnership registrations.

Northamptonshire County Council's Registration Service is seeking to amend the current system and provide registrations at Northampton, Kettering and Wellingborough registration offices only, on Monday, Tuesday and Wednesday mornings.

The Registration Service would provide a total of seven appointments per week for customers to book, exceeding the current demand which is an average of 5.6 registrations conducted per week

across the county.

The changes are being proposed in order to deliver the service in the council's larger registration offices and to keep more afternoon appointments available for customers wishing to register deaths or other events.

The consultation launched on 9th December and continues until 20th January. To have their say, people can visit www.northamptonshire.gov.uk/consultations, email registrationservice@northamptonshire.gov.uk, or write to Registration Consultation, Registration Service, c/o Trading Standards, Wootton Hall Park, Northampton, NN4 0GB.

Don't let fire ruin festive cheer this Christmas

Christmas dinner, wrapping presents, decorating your home – there's lots to think about this Christmas. But one thing Northamptonshire Fire and Rescue Service and the Fire Kills campaign are urging Northamptonshire residents to put top of their Christmas lists this year is fire safety.

Fire statistics show that, in December, 20 people a day are either killed or injured in accidental fires in the home in England. In December 2013, there were around 2,700 accidental fires in the home in England – more than any other month of the year.

Whilst fire safety is important throughout the year, the extra distractions of Christmas make it especially important to be vigilant during the festive season.

Baz Fox, Prevention and Community Protection Manager for Northamptonshire Fire and Rescue, said: "Christmas is a time for festive cheer with family and friends, but fairy lights, candles and decorations can pose a fire risk if we don't use them safely and we should all plan to take extra care to keep our loved ones safe from fire."

To ensure you have the merriest of Christmases, keep fire safety at the top of your list and follow a few simple tips from the Fire Kills campaign to help you and your family enjoy the joys Christmas safely:

- Ensure you have working smoke alarms installed on all levels of your home. A working alarm can give you the vital time

needed to escape from a fire. Test your smoke alarms regularly and never remove batteries!

- Never leave cooking unattended. The majority of fires start in the kitchen, so this is a high risk area. Many of us enjoy a merry tittle over the festive season but avoid cooking whilst under the influence of alcohol. Always remember to turn off kitchen appliances when you have finished cooking.
- Never leave burning candles unattended. Keep candles out of the reach of children, and away from decorations, cards and wrapping paper, fires, lights and heaters. Ensure you place candles and tealights in suitable holders to avoid dripping hot wax on flammable items and keep them away from curtains.
- Put your cigarette out, right out. Make sure your cigarette is fully extinguished and take care when under the influence of alcohol or tired. It's very easy to fall asleep while your cigarette is still burning and set furniture alight.
- Don't overload sockets. Ensure only one plug per socket. Remember Extension leads are meant for temporary use, not as a regular solution to a lack of sockets. Always turn off plugs when they are not in use, except those that are designed to be left on, like freezers.
- Ensure you switch off fairy lights and unplug them before you go to bed, or leave the house. Check your Christmas tree lights conform to the British Standard (BS EN 60598) and are in good working order

before use.

- Always use an RCD (residual current device) on outdoor electrical equipment. This safety device can save lives by instantly switching off the power if there is a fault and can be found in any DIY store.
- Community Spirit – help someone out this Christmas. Offer to test the smoke alarms of

someone you know who may need help such as an older relative or neighbour to ensure their safety, as they may be at greater risk from fire, especially if they have decreased mobility.

Make sure that everyone in your home knows what to do in a fire – in the event of fire you should get out, stay out and call 999.

Oundle Festival of Music

On Thursday 6th November, President of the British and International Federation of Festivals, Margaret Venables came to Oundle to present the Gold Award Certificate of Good Practice to Oundle Festival of Music and Drama at a reception at the Courthouse.

This is the second such award that Oundle has received, the first being in 2008. The Festival personnel pride themselves on keeping up the high standards that this award demands and are so pleased that this is again recognised.

Oundle is one of the festivals older than the Federation, holding its first festival in 1909 on 21st April. As with most of these early organisations set up by local gentry, Oundle's was instigated by the Lady Millicent Lilford from nearby Lilford Hall. She was then joined by Lady Ethel Wickham who lived at Barnwell Manor.

To begin with, the competitions were for local choirs and ensembles, a solo class for boys under 17 and an open piano class, a



Committee members and helpers

total of 15. Thus it was named a Musical Competition. Since those days although the demise of the local village choirs sees fewer choral entries, with the advent of instrumental groups in schools the field has widened considerably.

In 1968, in common with a good many other festivals, it was decided to offer classes in Speech and Drama. Today there are over 200 classes on offer.

The syllabus for the 2015 festival, 15th–18th April, is now available at Oundle Bookshop or online www.ofmd.org.uk. Entries close 28th January.

The 2014 Poppy Appeal in Higham Ferrers

The Higham Ferrers Branch of the Royal British Legion (H.F.RBL) saw a most welcome increase in donations to The Poppy Appeal this year – the year in which we commemorated the outbreak of the First World War 100 years ago.

Lt Col (Retd) Glenn Harwood MBE, Chairman of the Branch said: "The final amount donated by local people and businesses exceeded £4,500. That is a superb amount and a record for the Branch. It also reflects the kindness and generosity of local residents in this most special of years for the RBL. Donations help with the various events and just general support to the Poppy Appeal all contributed to this year's success. Well done one and all."

Mr Andrew Evans, Poppy Organiser said: "Thank you to all who have donated, our volunteer collectors and all the local businesses and schools who kindly allowed collecting tins on their premises. Without their sterling efforts those serving and ex-serving members, and their families, who received assistance from the RBL, would not have received help when they needed it."

Mr Joe Granfield Higham Ferrers Branch Secretary said: "In a year that marks the centenary of the conflict which gave birth to the poppy as a symbol of Remembrance and hope, the Legion's role remains as contemporary and as vital as ever, supporting today's generation of Armed Forces families and veterans."

This year also marks the introduction of 'The Poppy Bowl Award'. This award will be presented annually by the Branch to the group of local youngsters who, in the view of the Branch Committee, have done the most to promote and support The Poppy Appeal. The recipient of this year's award is the Higham

Ferrers Junior School.

The Bowl has been sponsored this year by Freightroute, SMDL, Internet Solutions and J&P Fruit & Veg and the Branch is extremely grateful to them. If you are a local business and would like to be a future sponsor please contact the Branch.

For details on joining or helping the Royal British Legion as part of the Higham Ferrers Branch, please contact Mr Joe Granfield, Branch Secretary on: 07940 745594.



Royal British Legion. (Left to right) Glenn Harwood MBE (Chairman), Mr Ron Granfield (Standard Bearer) and Mr Roger Townsend (Welfare Rep) at the Farmers' Market Stall

Mortgages

Friendly, efficient service
Local, ethical business
Independent, whole of market
Home visits available

15 years experience with all sorts of mortgages, including purchases, remortgages and buy-to-let.

Your property may be repossessed if you do not keep up repayments on your mortgage.

For mortgages we can be paid by commission, or a fee of usually £600 against which we will offset any commission we receive. Fees are payable upon completion.

ALSO... expert advice on life insurance, critical illness cover, income protection etc.

bowerock financial advice

01832 734464, 07779 847915, john@bowerock.co.uk

49a High Street, Thrapston, Northants, NN14 4JJ

Nuts about Christmas

By Catherine Burbage

I hope by now you have the decorations up and the presents sorted, if not wrapped! Here are a couple of ideas you can use as last-minute presents, hostess gifts or drinks party nibbles.

If you don't have time to make anything now, just tuck away a couple of bags of mixed nuts, some chocolate and find the end of a packet of dried fruit. Then, in the time it takes for an advert break during a James Bond film, you'll have whipped up one of these recipes. I'm going to make some to leave out for Father Christmas, as I know he likes both recipes. Merry Christmas!

CHOCOLATE BARK OR PUDDLES

Melt 100g of chocolate (can be white, milk or dark). You can do this in the microwave, but it always goes wrong if I do that. I find that a Pyrex bowl over a pan of simmering water is a lot gentler and more reliable. Take the chocolate off the heat whilst there are still a couple of lumps and

the residual heat will do the best without burning the chocolate.

Line a flat baking tray or similar with greaseproof paper. Pour the chocolate onto the paper and spread it evenly into an oblong, about 18 x 24cm. If you prefer, you can drop small 'puddles' of chocolate onto the paper instead.

Roughly chop 75g of mixed fruit and nuts and sprinkle evenly over the chocolate. Sprinkle some coarse sea salt over it too, and put in the fridge to set. Once it's set, the chocolate will come away easily from the paper. If you've not made puddles, roughly break it into pieces. Pop some into a festive bag and you have a very nice little gift.

SPICY NUTS

250g mixed nuts
2 tbsp mixed seeds
Pinch chilli flakes
1 tsp curry powder
1 tbsp olive oil
2 tsp runny honey
To finish – sea salt

Mix all the ingredients, except the salt, together. Line

a baking tray with greaseproof paper and spread the nut mixture over it. Bake in a medium oven for around 10 minutes – keep a close eye on it as if the nuts have skins on these can burn easily and taste unpleasant. Once lightly coloured, sprinkle with salt and allow to cool.



The Education Fellowship appoints 'expert' Human Resources Officer

The Education Fellowship based in Titchmarsh has appointed Julie Prescott as its Human Resources Officer.

Lizzie Rowe, Deputy CEO, said: "A crucial element in delivering outstanding education to all our students and pupils is ensuring all our Academies are able to achieve their HR priorities by supporting the achievement of the strategic aims of the organisation, to influence and instigate change and to add value to the educational outcomes, whilst ensuring current legislation and best practice. We are delighted that Julie joins us and brings a wealth of knowledge, experience and talent. She will encourage, implement and provide

a pro-active HR Service throughout the Fellowship and its Academies."

Julie joins the Fellowship with over 20 years' HR experience working within the public sector and a secondary school. She spent the past six-and-a-half years working for Strictly Education Ltd where she undertook the role of HR Consultant, working with client schools on a wealth of HR matters, from reviewing of staffing structures to employee relations. She gained the reputation of being an expert in conducting investigations and resolving complex HR cases. Her good working relationships with her customers and her knowledge and professionalism led to high levels of customer retention.

Julie Prescott



Think green this Christmas

For many people, Christmas is a time of excitement and celebration, with lots of parties, family get-togethers, food and presents.

However, it's also the time of year which creates the most waste, so we're asking residents to 'think green' this Christmas and recycle as much as possible.

The main sources of extra rubbish are food, cardboard boxes, bottles and jars, drinks cans, plastic packaging and cards, all of which can be recycled.

Make the most of your green-lidded bin to recycle:

- Glass bottles and jars
- Metal cans and tins, including empty aerosol cans
- Plastic bottles and containers, including ice cream tubs, yoghurt pots and margarine tubs
- Paper, including wrapping paper and party hats
- Card and cardboard, including Christmas cards and boxes
- Food and drink cartons (Tetrapaks)
- Clean tin foil

If you've got too much recycling to fit into your green-lidded bin, Northamptonshire County Council will collect extra recyclable waste which is left out in cardboard boxes or clear sacks beside the bin.



Love your leftovers with a recipe from www.lovefoodhatewaste.com

For any food which is past its best, and for food waste

like the turkey carcass which can't be eaten, use your food waste caddy to recycle it. All the food which is collected in the food waste caddies is used to create an agricultural fertiliser, so it's a really green way to get rid of your excess food.

Compost your peelings and help your garden grow. Visit www.recyclenow.com/reduce/home-composting for tips and advice on how to get composting. It's really easy.

Recycle your Christmas tree at your local Household Waste Recycling Centre (HWRC). See contact details at the end of this article.

If you're a member of the Garden Waste Service, then it's even easier to recycle your tree – just cut it up and place in your brown-lidded bin for collection. Garden Waste Service bins will not be collected between 20th December and 4th January 2015.

We want THE BEST recycling. Bins which contain large amounts of contaminant material can't be



collected. To help keep your recycling pure:

- **Don't** place recycling in carrier bags or black sacks – place it loosely into your green-lidded bin
- **Don't** put food waste into the green-lidded bin (use your food waste caddy) and make sure that the recycling you do put in is clean
- **Don't** put expanded polystyrene (used a lot in packaging) in your green-lidded bin
- **Don't** put dirty nappies or animal waste into the green-lidded bin; put them in your black-lidded bin
- **Don't** put old toys, clothes or shoes into the green lidded bin; place them in a clothes bank

- **Don't** put old or broken electrical items into your green-lidded bin – take these to your nearest Household Waste Recycling Centre.

If you've got lots of extra recyclable waste, you can take it to a Household Waste Recycling Centre (HWRC). Visit www.northamptonshire.gov.uk/hwrc to find your nearest centre – there are sites in Rushden, Wellingborough, Kettering and Northampton. Check the website for opening times or call Northamptonshire County Council on 0300 126 1000, Mon–Fri 8am to 6pm. This number is charged at local rate and inclusive mobile phone minutes can be used.

Duo raise £1,700 for Help for Heroes

Over the course of 2014 two local men have completed 21 performances of poetry and songs from the First World War for local societies and groups and in the process have raised £1,700 for the Help for Heroes charity.

Audiences from Rushden and Higham Ferrers as well as from further afield appreciated their moving renderings of favourite war poems and some newly discovered ones. "I was in tears several times," said a lady from Bedford and another listener praised the choice of poems and the historical information that was presented.

Rotarian David Wilson and his great friend Richard Oberman, both academics formerly from Higham Ferrers, have been well known on the speaking and entertaining circuit for the past 14 years with their programmes of poetry and prose. Dickens, local dialect, amusing language, and local authors are among the many subjects covered by them either solo or as a duo. After 10 years they had raised £17,000 for Macmillan Cancer Support. Last year they brought their humorous touch to the life and times of Henry Chichele (Higham's 14th-century Archbishop of

Canterbury).

The programme of War Poetry was their swan song. They have retired from public entertaining twice before but this time it is the real thing and unlike Frank Sinatra they will not be doing any more comeback tours!

Richard said: "We have enjoyed the last 14 years because we enjoy performing and giving pleasure and education to our audiences. Now we are finding the late night travelling difficult and in any case we wanted to finish while audiences still wanted more."



Rotarian David Wilson and Richard Oberman



**Saturday 20th December
Carols in the Kitchen**
Lyveden New Bield
2.30pm–3.30pm
Normal property admission charges
Tel: 01832 205158
www.nationaltrust.org.uk/lyveden
Wrap up warm for a special festive carol service in the New Bield.

**Sunday 21st December
Carol Service**
Irthlingborough Methodist Church, College Street
10.30am
Tel: 01933 651643
Carol Service. All welcome.

**Sunday 21st December
Whitefriars Church
Christmas Service**
Whitefriars Church at Whitefriars Junior School, Boughton Drive, Rushden NN10 9HX
10.15am
Free admission.
Andrew Presland 01933 316927
A fun time for kids and adults as we celebrate Christmas together as a community.

**Wednesday 24th December
Midnight Communion Service**
Raunds Methodist Church, Brook Street, Raunds
11.30pm. Quiet service of Holy Communion to welcome Christmas Day

**Wednesday 24th December
Christmas Eve Holy Communion**
Irthlingborough Methodist Church, College Street
4pm. Tel: 01933 651643.
Everyone will be made most welcome.

**Thursday 25th December
Christmas Day Family Worship**
Irthlingborough Methodist Church, College Street
10am
Tel: 01933 651643
Everyone welcome to join with us to celebrate this very special day

**Thursday 25th December
All Age Christmas**

Celebration
Whitefriars Church at Whitefriars Junior School, Boughton Drive, Rushden NN10 9HX
10.15am
Free admission.
Andrew Presland 01933 316927
Including Holy Communion. Children are encouraged to bring a present to show.

**Thursday 25th December
Family Worship for Christmas Day**
Raunds Methodist Church, Brook Street, Raunds
10am–11am

**Sunday 28th December,
Mince Pie Special – A family trip on the train after Christmas.**
Rushden Transport Museum, The Railway Station, Station Approach, Rushden, Northants NN10 0AW
First train: 11am, last train 4pm.
Train fares: Adult £4, Child £2
Contact information: www.rhts.co.uk 01933 353111

**First Monday of month
Wildlife Trust Little Bugs Club**
Irthlingborough Library
1.30pm–3pm
Free, donations welcome.
Louise Tuffin 01604 405285 louise.tuffin@wildlifebcn.org
A fun monthly session for under 5s and their parents to discover local wildlife.

**Every Monday
Wesley Centre Art Class**
Irthlingborough Methodist Church
2pm–4pm
Tel: 01933 650195
Experienced teacher, all abilities welcome.

**Every Tuesday and Thursday (except Christmas and New Year)
Health Walks**
Stanwick Lakes
10am–11am
Free – normal car park charges apply.
Tel: 01933 625522
www.stanwicklakes.org.uk
Regular walking can help

improve your health. Join us in our regular walks.

**Tuesdays, Wednesdays, or Fridays
Exploring Northamptonshire by Bus** (refreshments optional)
Various villages & countryside
From 10am
£2.50 per map.
Tel: 01933 461480 (answerphone available)
Suitable for everyone.
Various journeys just to see more; short stroll or a longer walk.

**Every Wednesday evening
Dog Training and Socialisation and Ringcraft**
Halefield, Woodnewton, near Oundle
Classes from 6.45pm
Tel: 01832 293432
oundledogs@aol.com or website www.oundledogs.co.uk
Dog training classes following the KC Good Citizen Scheme and Ringcraft. New members always welcome.

**Alternate Wednesdays
U3A Country Dancing**
St James' Church hall
Thrapston
2pm–3.30pm
ghearnden@tiscali.co.uk
Tel: 01933 622827
The U3A Country Dance Group meets on alternate Wednesdays. All are welcome. Non U3A members are welcome for a taster.

**Third Wednesday of month (except December, different date)
Higham and Rushden U3A**
Pemberton Centre, Rushden
2pm–4pm
£2 for visitors
Tel: Membership Secretary 01933 314425
Monthly speaker followed by beverages and mixing for social chat.

**Every Wednesday (except December)
Rainbow Cafe for Tots** (aimed at up to age 5 and their adults)
Stanwick Lakes
10.30am–12noon
£2 per child – normal car park charges apply.
Tel: 01933 625522
www.stanwicklakes.org.uk
Make new and exciting crafts, then join Lisa from Music and Movement to play, sing and dance.

**Every Thursday
Folk Dancing**
St Mary's Church Hall
8pm–10pm
First visit free, £2 per night thereafter.
If you enjoy folk dancing come and join us.

**Every Thursday
The Silverfox Turners Club**
Dale End Scout Headquarters, Croyland Road, Wellingborough
Bet 10am–1pm
£2 all members
Secretary Trevor Rhodes
Tel: 01933 382790
Newly formed wood turning club. Open to all levels of wood turners.
Warm welcome guaranteed.

**Every Thursday during school term time
Music Makers**
Titchmarsh Pavilion
9.30am–10.15am
£4 per child and £2 per sibling.
Naomi Cooper on musicmakersnorthants@gmail.com
Funky music and movement group for 0–5 years with parachute, puppets, balls, bubbles and more.

Music Makers
Joan Strong Centre, Oundle
11.15am–12noon
£4 per child and £2 per sibling.
Naomi Cooper on musicmakersnorthants@gmail.com
Funky music and movement group for 0–5 years with parachute, puppets, balls, bubbles and more.

Little Treasures Tots Group
St Laurence's Church, Stanwick
9.30am–11am
Donations to cover costs
Tel: Nicki 01933 625658
For pre-schoolchildren and their adult carer – Bible story, song, craft and fun. All welcome.

**Third Thursday of the month
Painting Class**
St John Ambulance Hall
Raunds
10am–4pm
£15 per session
Phone 01933 389936
Drawing and painting class using mixed media. Very friendly class - all abilities welcome.

**First Friday of the month (recommend checking before travelling)
Craft Cafe**
Stanwick Lakes
10.30am–1pm
Modest charges for some materials – normal car park charges apply.
Tel: 01933 625522
www.stanwicklakes.org.uk
Learn new craft skills, share your experience and meet up with crafty friends.

**Third Friday of the month
The Poetry Group**
Raunds Library
2.30pm

Free
Tel: 01933 622151

**Third Friday of the month (recommend checking before travelling)
Stanwick Stitchers**
Stanwick Lakes
10.30am
Free entry – normal car park charges apply.
Tel: 01933 625522 or Pauline on 01933 229817
www.stanwicklakes.org.uk
Come and join this informal friendly group of stitchers to chat, stitch and eat cake!

**First Saturday of the month
Thrapston Farmers' Market**
Thrapston High Street
9am–1pm
Free
www.thrapstonfarmersmarket.moonfruit.com
Every first Saturday of the month. Local meat, beer, cider, cheese, eggs, deli, preserves etc.

**Second Saturday of the month
WE Watch and Phoenix Group**
Stanwick Lakes
For more information email wewatchstanwick@hotmail.co.uk
Tel: 01933 625522
Two clubs for keen young nature lovers. WE Watch for ages 8–3 and Phoenix for ages 13–18. Supported by RSPB and Wildlife Trust.

**Second Saturday of the month (Same Saturday as Oundle Farmers' Market)
Coffee 'n' Cakes**
Oundle Methodist Church, Drummingwell Lane (behind the Talbot Hotel)
10am–12noon
Tel: John Hewitson 01832 272209
Filter coffee, tea, squash. (free refills)
homemade cakes.
Warm welcome.
Proceeds to various charities.

**Last Saturday of the month (except December)
Farmer's Market**
Market Square, Higham Ferrers
9am–1pm
danielle@highamferrers-tc.gov.uk
Aberdeen Angus beef, organic eggs, vegetables, Italian peppers, organic pork and lamb, free range poultry, beer, pork in all its forms in addition to pickles, pies, herbs, fresh fish, fruit and honey, preserves, traditional bread, plants & cheese.

Last Sunday of the month (except December) (recommend checking before travelling)

Local Producers' and Farmers' Market
Stanwick Lakes
10am–2pm
Free entry to market – normal car park charges apply.
Tel: 01933 625522
www.stanwicklakes.org.uk
Browse through tempting treats and gifts made and farmed by local businesses.

**Every first Sunday
Priceless – for young children and their families**
St Laurence's Church
Stanwick
9.30am–10.15am
Join Tanya and Nicki for 45 minutes of fun, craft and prayer.

**Every third Sunday
All Age Worship**
St Laurence's Church
Stanwick
9.30am
Join us for our All Age Worship designed for people of all ages. Teas/coffees served after the service.

**Ongoing
Drawing and Painting Classes**
Ecton Village Hall, Chelveston Village Hall, Warkton Village Hall, Kingsthorpe Community Centre
Various (see my website) dgartweb.sharepoint.com
£65 per term
Tel: Derek Geater 01933 381848
Drawing and painting, mainly working in watercolour with some soft pastels.



More events
can be found at
www.nenevalleynews.co.uk

To submit your event please contact us via our website in the following format: Date, event, place, time, admission fee (if applicable), contact information, 15 word description.

From the East Northamptonshire Chairman

'Tis the season to have lots of fun, something I'll be doing at my next fundraiser where I hope you'll join me. It will be a concert with a fabulous Queen tribute band, Queen B. It starts at 8pm on Saturday, 27th December at the Rushden Bowls Club, Northampton Road, Rushden and is kindly being organised by the Swivel Club.

It's a joint event between myself and the Mayors of Rushden and Higham Ferrers and you can get tickets (£15 each) from mayor@rushdentowncouncil.gov.uk or by calling 01933 316216. After 24th December, you can buy them online at www.swivelclub.com Queen B came to Rushden last year and put on a magnificent show. Please do come along, I'm sure you'll have a great time.

At the end of November it is Thanksgiving, a famous American tradition and I enjoyed a visit to the USAF base in Alconbury to celebrate the occasion with a church service followed by a pie

bake off. I enjoyed the traditional pumpkin and pecan pies. It was a very pleasant evening and a wonderful tribute to Anglo-American co-operation.

Another task which was very pleasurable was touring the district to see the first tranche of the projects which have received community grants from East Northamptonshire Council via the New Homes Bonus scheme. First stop was the site of a new skate park in Rushden, to replace the one which had to be dismantled as it was becoming dangerous.

Next up was the Rushden Historical Transport Museum, which is trying to purchase the old Goods Shed as a community facility to extend their museum. Then we went on to Ringstead where a community group is planning a fabulous new park for the village.

Our next stop was Kings Cliffe which has fantastic sports facilities. Their grant will enable them to extend these further still, with three tennis courts and two netball courts and possible bowls facilities.

Finally, we went to Irthlingborough to the fantastic Diamonds gymnastics club. Their gym has a sprung floor, fabulous gym equipment, balance beams, pommel horse, rings, vaulting boxes, the list goes on. Over 250 young people belong to this very active club and this grant will enable them to extend their new flooring to be safer and more protective.

East Northamptonshire Council is to be congratulated for using the New Homes Bonus funding to help communities benefit from the new homes that are being built and to build up the infrastructure for future generations. I look forward to seeing these projects develop and local people being able to make use of them.

It's a busy time for all in the run-up to Christmas and I've had the pleasure of attending a civic Christmas dinner in Huntingdon, a civic service in Daventry and a carol service in Market Harborough.

I also attended the lights switch on and fair in Rushden. I would like

to congratulate the town council events committee for an excellent day of entertainment. It certainly brought many families into the town centre. I would also like to thank the people of Rushden for their magnificent support. From the stage, there were no gaps in any

direction in the sea of heads.

I'd like to take this opportunity to wish you all a very Merry Christmas and Happy New Year. I look forward to visiting more of the district in 2015.

Best wishes
ENC Chairman, Cllr Gill Mercer



Chairman Cllr Gill Mercer celebrating Christmas at a civic event in the area

Rushden Academy pupils excel at chess

The Rushden Academy recently took part in the third Intergenerational Chess Challenge against Rushden Chess Club (RCC). The matches took place on Monday evenings over a period of four weeks.

The previous two challenges had taken place at the school with victories for the Chess Club. It was therefore with some trepidation that the students embarked on the weekly trip over to the Bowls Club, the home of RCC.

The competition was organised by the Learning Resources Centre Manager, Tracey Frohawk and Club Secretary, Nik Puryer. RCC took an early lead winning the first two matches; the Academy's

team were undaunted by this early show of strength and went on to win the third match. Everything hinged on a good performance from the school in the fourth match. The students were clearly up for the game when they arrived and soon entered into the spirit of it.

Lucy Boulton, a veteran of the two earlier challenges and victorious in the previous two weeks, fell to an on-form Pete Halifax. It was left to new boys Scott Wills and Hayden Langwith to salvage the match with convincing victories over their Club opponents. This left school and club honours even after four matches.

After a tense count back of boards won the school were

declared overall victors with a board score of 12.5 against RCC's 11.5.

Lucy Boulton, Scott Wills and Hayden Langwith had all scored eight points during the Challenge and were declared equal first. Owen Turner also turned in a creditable performance having scored seven points.

Nik Puryer presented the students with mementoes from the Chess Club and congratulated them on their performance. RCC fielded two junior members, nine-year-old Lily Boulton – who managed to chalk up two draws – and Fortis Diksas, aged seven, who played his first ever competitive matches.

The students enjoyed the experience of playing in an adult

environment and were a credit to the school with their behaviour. Certificates and trophies were presented to the victorious team

by Tracey. Nik said that the Club was looking forward to the next challenge and hopefully an RCC victory.



L to R: Derrick Sims, Hayden Langwith, Lucy Boulton, Owen Turner, Tracey Frohawk & Scott Wills

Don't invite thieves round this Christmas

Christmas is a time for joy and merriment, so nobody wants the hassle and heartbreak of a burglary over the holiday period.

Unfortunately, though, all the gifts and gadgets which we buy each other for Christmas can be a big attraction for thieves. As we go off to visit family and friends for the festive period, many of us leave our houses empty for long periods.

Dark windows, open gates, and visible valuables are all an invitation for thieves. So this Christmas, ask yourself what a burglar might be thinking when they look at your house.

There are things which you can do to help make your property less attractive to criminals. Follow these simple tips to help keep the

burglars at bay this Christmas and New Year:

- **Keep presents out of sight:** don't leave gifts under the tree or near windows in the run-up to Christmas.
- **Lock up:** even when you're in the house, keep all external doors and accessible windows shut and locked to deter burglars.
- **Don't leave valuables lying around:** make sure that cash and keys are stored safely out of sight and reach of doors, windows, letterboxes and cat flaps.
- **Fit mortice locks:** if you don't use your back door as a fire escape route, fit top and bottom mortice bolts for extra security.
- **Install gates and fences:** keep the back and sides of your home secure by fitting strong fencing or gates which don't provide a climbing aid.

- **Keep hedges neat and tidy:** ensure that your property is visible from the street by keeping hedges and fences low at the front.
- **Make your house look occupied:** if you're out or on holiday, use a timer switch to turn on lamps and lights so it looks like someone's in. Use a dusk to dawn light to keep your front door lit after dark.
- **Cancel deliveries:** remember to cancel any milk or newspaper deliveries if you're going away.
- **Don't forget the outbuildings:** lock and secure garages and sheds.

To find out more about crime prevention in Northamptonshire, visit www.northants.police.uk/crimeprevention. If you have information about crime or criminals, call 101 or phone Crimestoppers anonymously on 0800 555 111.



THE WINTER SALE STARTS 3rd JANUARY



OUNDLE CARPET WEAVERS MANUFACTURERS OF FINE CARPETS

STOCK ROLLS OF CARPET

We stock over 110 full rolls of carpet in our factory warehouse.
All at sale prices for our **winter sale**.

	NORMAL PRICE Per square metre	SALE PRICE Per square metre
Lano Pembroke Twist 4 colours 4m wide	£16.20	NOW ONLY £8
Brockway Aspen 50oz Wool Twist 3 colours 4m wide	£35	NOW ONLY £18
OCW 45oz Wool Stripe 6 colour ways 4m wide	£29	NOW ONLY £16
OCW 45oz Wool Twist 6 exciting colours 4m wide	£29	NOW ONLY £18
Telenzo 100% Wool 2 colours 4m wide Scotchgard	£38.25	NOW ONLY £10
HEAVY CONTRACT WOOL AXMINSTER 2 DESIGNS	£65	NOW ONLY £20

WE HAVE 250 Carpet & VINYL END OF ROLLS

All priced to clear.
Just look at these prices.

	NORMAL PRICE	CLEARANCE PRICE
Heavy Domestic Twist Pile 2.07m x 3.53m	£124	NOW ONLY £53
Heavy Domestic Brown Twist 3.93m x 4m	£254	NOW ONLY £125
Heavy Domestic Beige 100% Wool Natural 2.92m x 5m	£259	NOW ONLY £130
100% Wool Natural Heavy Domestic Beige 2.92m x 4m	£443	NOW ONLY £159
Tintawn, Simply Natural Heavy Duty 3.65m x 5m	£693	NOW ONLY £222
OCW Wool Twist Heavy Duty Grey 3.77m x 4m	£302	NOW ONLY £185
OCW Wool Twist Heavy Duty Cream 4.23m x 4m	£508	NOW ONLY £210
Tintawn, Simply Natural Heavy Duty 6.92m x 4m	£1051	NOW ONLY £323

OUR END OF ROLLS IN VINYL 2m x 2m from Just **£10**

STOCK VINYL

3 metres wide 5 Designs

Normal Price £19.95 per square metre

SALE PRICE £8 per square metre

LVT Vinyl Flooring

Wood Planks & TILES

Normal Price £18 per square metre

SALE PRICE £10 per square metre

GREAT SAVINGS ON BEDS

4'6" Divan set starts from JUST **£179**

4'6" Metal Bedstead from **£99**

We have many many more beds in stock

Dining Chairs in oak
both side and carver

NOW ONLY £15 each

HANDMADE TABLES to Clear from £199

WE HAVE LOTS MORE BARGAINS IN STORE YOU MUST COME & SEE

WHERE TO FIND US: Units 4/6 Eastwood Road, Oundle PE8 4DF

**OPENING TIMES: Monday to Saturday 9am – 5.30pm or please book an appointment
01832 275009 • www.oundlecarpetweavers.com**

Classifieds

Deadlines for all classifications: 5pm Monday prior to issue date.

A complete version of our Terms and Conditions can be found online at www.nenevalleynews.co.uk
Pay by credit/debit card or cheque. All major credit/debit cards accepted.

Family notices

Nene Valley News can help you make those important family announcements.

For help and information to place your notice please call 01522 513515 or visit www.nenevalleynews.co.uk



CARE HOMES

Rose Cottage Residential Care Home Woodford

We are a small care home with eight residents only. All rooms are single en-suite and ground floor. We provide respite care and day care.
Telephone 01832 735417
www.rosecottagewoodford.co.uk

Follow us on Facebook



HOME IMPROVEMENTS

KitchenDoor Solutions

Replacement doors and kitchen refurbishment
Doors available in solid wood, painted and laminate finishes

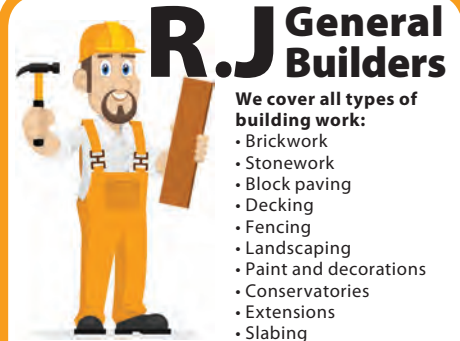


Iain Smith

Tel: 01933 311310

Mob: 07583 869741

SPECIALISTS SINCE 1980



R.J. General Builders

We cover all types of building work:

- Brickwork
- Stonework
- Block paving
- Decking
- Fencing
- Landscaping
- Paint and decorations
- Conservatories
- Extensions
- Slabbing

Free quotes and advice
07415 508 306 or 01933 623212
jjcoloughlin@gmail.com

CONSERVATORIES

EG VICTORIAN 3500 BY 3500
FULLY INSTALLED INCLUDING
ALL BRICKWORK AND VAT

£7250

ALL OTHER DESIGNS AND SIZES AVAILABLE
UNBEATABLE PRICES
PHONE NICK ALLINGTON ON
(01832) 734070
WWW.CONSERVATORIESBUILT.CO.UK

Kevin Neil Chambers

RE-BOARD & SMOOTH CEILINGS
PLASTERING - COVING - PATIOS
GARDEN WALLS - FENCING - BLOCK PAVING
NO JOB TOO SMALL
01832 731087 OR 07713 890754
RELIABLE, CLEAN AND FRIENDLY SERVICE
kevinchambers07@btinternet.com

Jon Spencer
Technical Drawing Services
Plans drawn for planning and building regulation applications
01933 316044

ALAN TAYLOR

For your local plastering

Boarding, Covering, Rendering
All aspects of plastering. Enquiries welcome.
Call Alan for a free quotation or advice on
01933 430098 or 07977 926717

DENFORD CONSTRUCTION

No job too small, all trades covered
We carry out new builds, extensions, refurbishments, alterations & any home improvements required.

1 Spinney Rise, Denford, Kettering NN14 4AR
Email: ian.polson@btinternet.com • Mobile: 07970 760 349

Debbie Dawson & Son Interior Painters and Decorators

• Free estimates • Over 15 years experience
Tel: 01832 274652 Mobile: 07779 393458

10% OAP DISCOUNT

!!!GET PLASTERED!!!

For all your plastering needs.
No job too small, no fuss, no nonsense!
Reliable and trustworthy service at the best possible price.
Call Steve for free, friendly advice or a free quote.

07703 720138 • 01933 430051

Andrew Porter BSc. (Hons)
Architectural Consultant

PLANS DRAWN FOR PLANNING & BUILDING REGULATION APPROVAL

Telephone: 01933 626 183 Mobile: 07544 207218
e-mail: andrewporter282@btinternet.com

Ashby's Allsorts

Home Improvement & Handyman Services

Free Estimates

No Job Too Small

Inside and Outside Work Undertaken

Public Liability Insurance

Quality Work at Competitive Prices

Tel: 01832 771020

Mobile: 07584 673767

Email: contact@ashbys-allsorts.co.uk

www.ashbys-allsorts.co.uk

Based in Thrapston, we service a radius of 30ish miles.



GARDENING

James Rowlett Tree Care

Maintaining trees for the next generation

Call James for a free site visit with advice and a no obligation quotation

- + Tree felling, pruning and reducing
- + Hazardous / storm damaged trees
- + Sectional dismantling of small and large trees
- + Hedge trimming
- + Site clearance
- + Stump grinding
- + Wood chip available



01832 226 333 james@jr-tc.co.uk
07963 758934 www.jr-tc.co.uk

All work carried out to BS3998 by qualified and insured craftsmen
JW & MA ROWLETT



HOME SERVICES

CLARK COAL SUPPLIES

DELIVERED FREE TO RUSHDEN, HIGHAM FERRERS AND SURROUNDING VILLAGES

MINIMUM DELIVERY 5 BAGS
CASH ON DELIVERY

TELEPHONE 01933 314742

ENSIGN GAS ENGINEERS

GAS FIRES, GAS COOKERS
INSTALLATION, SERVICE AND REPAIR
Recommended service agent for:
Focal Point Fires, Superior Fires and Eco Fires

NO CALL OUT CHARGE

Tel: 01933 318327



Part P Registered ELECTRICAL LTD

- Rewires, fuse board replacements
- Fault finding, extra sockets & lights
- Testing, inspection & certification
- No job too small, free estimates given

Email: seatonsparky@gmail.com
T: 01933 778504 M: 07952 249885

POSITIVE ELECTRICAL & PLUMBING SERVICES

PART P APPROVED ELECTRICAL CONTRACTOR
RELIABLE & PROFESSIONAL
NEW BUILDS, EXTENSIONS, REWIRES
FUSE BOARD UPGRADES, SHOWERS & MORE
ALSO FIRE ALARMS & EMERGENCY LIGHTING
FOR A QUOTE OR ADVICE, CONTACT PAUL ON:

OFFICE: 01832 732881
MOBILE: 07939 088246
OR EMAIL: posive@hotmail.com

PGR Plumbing & Heating

Tel: 01933 698116

24 Hr Emergency Service
Email: pgrplumbing@btinternet.com
Web: www.pgrplumbing.co.uk

Specialists in Gas Installations
Gas Servicing & Maintenance
Landlords Gas Safety Certificates
Central Heating Powerflushing
Household Plumbing & Drainage

CLEAR THE JUNK

The Rose Clearance Service

Full - Part - Single Items.

Fully Registered and Insured. Est 30 years.
www.rose-clearance-services.co.uk

Tel: 01933 317113 or 07761 248266

DONNO R G TV/AERIAL SERVICES

Est 1981

TV/DVD repairs, servicing at your home if possible
Full installation service available.
Freesat and Freeview digital aerials supplied and installed from £80. All work guaranteed.
No call out charge locally. Free estimates on repairs.

Tel: 01933 356680

COSTUME JEWELLERY AND ALL UNWANTED JEWELLERY
BROKEN OR PERFECT BOUGHT.
ALSO OLD WATCHES AND COINS.
ANY QUANTITY. JILL WILDING 01832 737803.

SPENCER LOGS

Pick-up load £70 - Builder's bag £50

Tel: 01933 317113
or 07761 248266



Why clean my wheelie bin?
Your wheelie bin can become a breeding ground for HARMFUL GERMS and BACTERIA which can lead to maggots, flies and other UNWANTED PESTS and some UNPLEASANT SMELLS!!!

Residential and Commercial Wheelie Bin Cleaning Service
Prices from £3.75 per month

07950877137 / 01933 382882

www.reallywheelieclean.co.uk
info@reallywheelieclean.co.uk

Plumber Local & Fast!

Plumbing

Leaks & bursts • Toilets & taps
Pumps & valves • Cylinders & sinks

Bathrooms

Design & build • Supply & fitting
Carpentry & tiling
+ heating systems

- No call-out charge!
- City & Guilds Qualified
- All work guaranteed



01933 450004 or 07921 469471

DC Heating
SAFE IN OUR HANDS

YOUR LOCAL PROFESSIONAL HEATING AND PLUMBING ENGINEERS YOU CAN TRUST

REPAIRS • SERVICING • INSTALLATIONS

Phone today for a free quotation on
Tel: 01933 392 719
www.dcheatingengineers.co.uk



LADY TILER

WALLS AND FLOORS

Friendly advice. No job too big or too small.
Please contact Karen

Tel: 01933 461295 / 07975 752580

PLUMBER

All plumbing work undertaken - No call out charge

Toilet repairs - Dripping overflows - Leaks and bursts
Garden taps installed - Tap repairs and replacements
Radiators supplied and fitted

20 years' experience
Call Tim 01832 358248 or 07957 550660

HANDY HERBERTS

Home & Garden Maintenance

All garden and exterior maintenance work undertaken including professional gutter cleaning

01933 563365 or 07725 225214



Classifieds continued



IT

Thrapston's Only Computer Repair Shop

Thrapston Computer Repair Service
Helping you and your tech get along

SET UP
SUPPORT
SERVICING
REPAIRS

Computers & Gadgets
We support home and business users
9 High Street, Islip NN14 3JS
☎ 01832 238037
www.thrapstonIT.com



REMOVALS

David Mallett
REMOVAL, STORAGE & GENERAL HAULAGE
HOME AND ABROAD

For a **FREE** quotation call
Mob: 0788 996 8064
Tel: 01832 731570

Local Friendly Service



PUBLIC NOTICES

NORTHAMPTONSHIRE COUNTY COUNCIL
ROAD TRAFFIC REGULATION ACT 1984
THE NORTHAMPTONSHIRE COUNTY COUNCIL
(PRESCRIBED ROUTES AND TRAFFIC REGULATION)
CONSOLIDATION TRAFFIC ORDER 2007
(AMENDMENT NO. 1) ORDER 2014

MARKET PLACE, OUNDLE
ONE-WAY TRAFFIC

NOTICE IS HEREBY GIVEN that Northamptonshire County Council have made an Order under Sections 1 to 5 and Schedule 9 of the Road Traffic Regulation Act 1984, to prohibit traffic from travelling in an eastbound direction along the southern side of Market Place, Oundle between its junction with the northern side of Market Place and its junction with St Osyth's Lane.

A COPY of the Order, together with a plan showing the exact lengths of road to which it relates may be inspected at Oundle Library, Glaphorn Road, Oundle or at the offices of The Traffic Order Section, Riverside House, Bedford Road, Northampton, NN1 5NX during normal office hours.

If you wish to question the validity of the Order or of any provisions contained in it on the grounds that it is not within the powers conferred by the Road Traffic Regulation Act 1984, or on the grounds that any requirement of that Act, or of any instrument made under it has not been complied with in relation to the Order, you may, within six weeks from the date of this Notice apply to the High Court for this purpose.

This Order will become effective on the 21st December 2014.

Dated this 20th day of December 2014

QUENTIN BAKER, Director of LGSS Law JCM/P1405-A

NORTHAMPTONSHIRE COUNTY COUNCIL
ROAD TRAFFIC REGULATION ACT 1984
THE NORTHAMPTONSHIRE COUNTY COUNCIL
(VARIOUS ROADS, OUNDLE TOWN CENTRE)
(20 MPH SPEED LIMIT) ORDER 2014

NOTICE IS HEREBY GIVEN that Northamptonshire County Council have made an Order under Sections 84 and Schedule 9 of the Road Traffic Regulation Act 1984 to prohibit any motor vehicle from travelling at a speed exceeding 20 mph along those lengths of roads as specified in the Schedule below.

A COPY of the Order, together with a plan showing the exact lengths of road to which it relates may be inspected at Oundle Library, Glaphorn Road, Oundle or at the offices of The Traffic Order Section, Riverside House, Bedford Road, Northampton, NN1 5NX during normal office hours.

If you wish to question the validity of the Order or of any provisions contained in it on the grounds that it is not within the powers conferred by the Road Traffic Regulation Act 1984, or on the grounds that any requirement of that Act, or of any instrument made under it has not been complied with in relation to the Order, you may, within six weeks from the date of this Notice apply to the High Court for this purpose.

This Order will become effective on the 21st December 2014.

Dated this 20th day of December 2014

QUENTIN BAKER, Director of LGSS Law JCM/P1405-B

SCHEDULE 1

1. New Street – between its junction with West Street and a point 205 metres north of that junction.
2. West Street – between its junction with New Street and a point 85 metres west of that junction.
3. Market Place – entire length
4. Church Street – entire length
5. Jericho – entire length
6. North Street – between its junction with Market Place and a point 55 metres north of that junction.



TOP SWEEP

CERTIFIED CHIMNEY SWEEP
FULLY INSURED, SERVICE CERTIFICATE ISSUED.
We feel the need, the need to sweep

★ 01536 523511 ★
www.topsweep-kettering.co.uk

swept Sweeping chimneys across
the chimney sweep company Northants, Beds, Pboro, Hunts, Cambs

- ✓ Prompt, Reliable, Clean & Efficient
- ✓ Fully Insured
- ✓ Bird Guards & Cows Fitted

Thrapston 01832 734 598 Call 24hr 07805 261 065
Email steve@sweptservices.co.uk



ACCOUNTANCY

Jon Essam & Co Ltd
Chartered Accountants

Self Assessment • Personal & Corporate Tax Planning
Book Keeping & VAT • New Business Start Ups
Payroll Services/CIS • Sage Software & Support
Free initial consultation

Tel: 01832 730280 Fax: 01832 730281
jon@essamca.co.uk www.essamca.co.uk

23 Cottingham Way, Thrapston,
Kettering, Northants, NN14 4PL
(Onsite parking available)



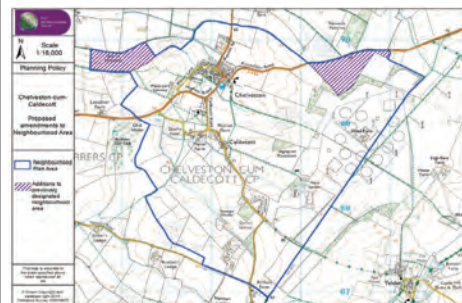
PUBLIC NOTICE

TOWN AND COUNTRY PLANNING ACT 1990
(AMENDED BY THE LOCALISM ACT 2011)
NEIGHBOURHOOD PLANNING (GENERAL)
REGULATIONS 2012

PROPOSED REVISION TO THE DESIGNATED
CHELVESTON CUM CALDECOTT
NEIGHBOURHOOD AREA

Notice is given that an application has been made by Chelveston cum Caldecott Parish Council for a revision to the Chelveston cum Caldecott Neighbourhood Area (previously designated on 12 February 2014); under Section 61G of the Town and Country Planning Act 1990 and Regulation 5 of the Neighbourhood Planning (General) Regulations 2012.

This proposed revision to the designated Neighbourhood Area will enable Chelveston cum Caldecott Parish Council to continue with the preparation of a Neighbourhood Plan for the new parish area (which came into effect on 15 October 2014), as shown on the map below.



Chelveston cum Caldecott Parish Council is a 'relevant body' for the purposes of Section 61G of the 1990 Act, and is therefore qualified to undertake neighbourhood planning. In accordance with Regulation 6 of the Neighbourhood Planning (General) Regulations 2012, the proposed revision to the designated Chelveston cum Caldecott Neighbourhood Area is now advertised for comments as to whether there is any reason why East Northamptonshire Council should not revise the designation. Further information can be found at www.east-northamptonshire.gov.uk/consultation.

Copies of the proposed Chelveston cum Caldecott Neighbourhood Area, including revisions to the current (designated) area, will be available to view at the following locations, between **Friday, 19 December 2014** and **Monday, 16 February 2015** inclusive:

- Customer Service Centre, Cedar Drive, Thrapston, NN14 4LZ (8:45am-5pm, Monday to Friday)
- Customer Service Centre, Newton Road, Rushden, NN10 0PT (9am-4:30pm, Monday to Friday)
- Customer Service Centre, Oundle Library, Glaphorn Road, Oundle, PE8 4JA (10am-1pm, Monday to Saturday)
- Raunds Town Council, The Hall, Thorpe Street, Raunds, NN9 6LT (9:30am-2pm, Monday to Friday)
- Libraries at Higham Ferrers, Irthlingborough, Oundle, Raunds, Rushden and Thrapston (opening times and other details are available from www.northamptonshire.gov.uk)

Any comments concerning the proposed revision to the Chelveston cum Caldecott Neighbourhood Area should be made, in writing:

- by e-mail to planningpolicy@east-northamptonshire.gov.uk by 4pm on Monday, 16 February 2015
- to Planning Policy and Conservation, East Northamptonshire Council, Cedar Drive, Thrapston, NN14 4LZ

David Reed
Head of Planning Services, East Northamptonshire Council

• Window sashes • Door frames •

THRAPSTON GLAZING
Est 85 **& JOINERY WORKSHOP**

FREE QUOTES
FREE GENUINE ADVICE

MANUFACTURERS OF HIGH QUALITY TRADITIONAL WINDOWS, DOORS & CONSERVATORIES IN HARDWOODS & SOFTWOODS

Manufacturers of replica windows, doors & mouldings for the older properties & houses of character.

WINDOWS • DOORS CONSERVATORIES UPVC and ALUMINIUM GLASS CUT TO SIZE WHILE YOU WAIT

We have been repairing customers existing windows and doors for over 15 years and this has become more and more popular, we now offer a dedicated, quality repair service with 1000s of spare parts for all makes of windows and doors, including, locks, hinges, handles, glass units, etc.

SAME INSTALLATION TEAM FOR LAST 25 YEARS.

All of this from a small local company offering a combined wealth of experience of over 150 years from our small workforce of six skilled craftsmen in the joinery, wood, aluminium & UPVC window and door industry.

UNIT 11, COTTINGHAM WAY, THRAPSTON
01832 734570 FENSA
www.thrapstonwindowsanddoors.co.uk
• Window sashes • Door frames •

Locks • Hinges • Sliding box sash windows • Doors • Hardwood Patios • Burglary repairs • Mouldings • Composite doors

new lodge
VETERINARY CENTRE

New Lodge Veterinary Centre
Reception Opening Times
Mon-Fri 8.30am-6.30pm Sat 8.30am-12.45pm

Getting a puppy or a kitten?
Our vaccinations include a free health check

Life stage health and nutrition advice
Free worming and flea treatment
Free 4 weeks insurance
And reduced cost microchipping
Call us today for further details

Modern purpose-built diagnostic medical and surgical facilities
Companion Animal Healthcare – treatment and advice
Preventative healthcare including vaccinations, neutering and dentistry
Consultations by appointment
Laboratory Facilities and Microchipping
Nurse consultations for advice and minor procedures
Pet passports
Spacious car park
Tours of facilities available on request
Pet accessories, leads, collars and Royal Canin food for sale

T • 01832 270 201
New Lodge Veterinary Centre,
Red Lodge Rd, Polebrook, Oundle,
Nr Peterborough PE8 5LL

THE BRIDGE HOTEL

The Bridge Hotel would like to wish everyone a very Happy Christmas and New Year!

Upcoming events in January

Want to know what's in store for you in 2015!
Come along to the Psychic Evening
Friday 16th January 2015

Light Supper of Lasagne & Salad
Including Admission £12.95 per person

Wedding Open Evening
Thursday 22nd January 2015, 6-9pm
Come and see the hotel set up in all its glory for that special day. Thinking of getting married, why not come have a look round and have a chat with our experience wedding team?

Bridge Street, Thrapston, Northamptonshire NN14 4JP
T: 01832 732128 • E: info@thebridge-hotel.com • W: www.thebridge-hotel.com

INDEPENDENT HARDWARE STORE

Thrapston Farm Garden

GET READY FOR WINTER
Rock Salt, Coal, Logs, Kindling, Sledges and Snow Scoops
IN STOCK NOW

Winter Fair and Square offers now in-store

Key Cutting

27th-31st December New Year's Fireworks on sale

Come and find out about our exciting new product line:
FloodSax
The modern sandbag

01832 735111
01832 732516

23-25 Midland Road, Thrapston, Northants NN14 4JS

Chess corner

By Derrick Sims

As we eat and drink our way through the festive season, now's the moment to sit back and relax, to take stock of the year past and think about the one to come.

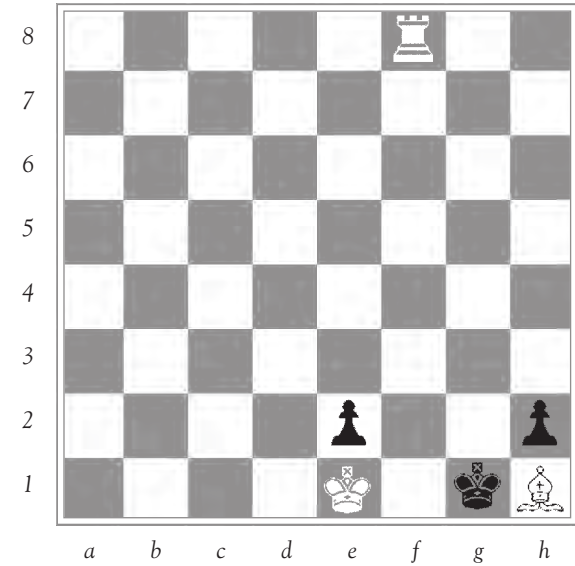
It's been a positive year here at Rushden Chess Club with new members strengthening our league teams and adding diversity to the club. One of the most welcoming aspects has been the increase in female membership both young and more mature.

The involvement of younger players has also added a new vitality to the club. We have been able to pit our younger members against the Chess players of Rushden Academy through the series of Intergenerational Matches (IGMs) that have been played.

As I sit in the warm glow of a wood fire cradling a glass of beer I think it's the time to exercise the brain with a chess puzzle. The diagram shows that white has the possibility of achieving mate in 3



moves. Why not dig out the chessboard that's sat in your cupboard for ages and see if you can work out how to do it. Maybe while the board's out you can play a game or two with friends and relatives. The solution will be published in the next edition of the Nene Valley News.



White to move, mate in three

Chess is a game for people of all abilities, disabilities and lifestyles. Rushden Chess Club loves welcoming new members, so do come along to a meeting if you're interested in playing chess in a very friendly environment – for details please call the Club Secretary on 07810 474969, or visit the club website <http://rushdenchessclub.com> and for the NCA (County Association) it's <http://www.norchess.lloydbunday.co.uk>.

ChromaSport & Trophies United Counties League results

Saturday 13th December
Premier Division
AFC Rushden & Diamonds 5–0 Harrowby United

Division One
Olney Town 3–2 Rushden & Higham United
Raunds Town 7–1 Stewarts & Lloyds Corby
Woodford United 5–2 Burton Park Wanderers

Reserves Division
Whitworths 2–1 Raunds Town

Under-21 Division
Football C V Reds 3–3 AFC Kempston Rovers
Wootton Blue Cross P Histon

Midweek Results
Tuesday 9th December
Division One
Northampton Spencer 3–0 Raunds Town
Potton United 1–1 Olney Town

Reserves Division
Thrapston Town 2–1 Huntingdon Town

Wednesday 10th December
Division One
Buckingham Town 2–2 Irchester United

Friday 12th December
Division One
Thrapston Town P Irchester United

Confirmation
Saturday 6th December
Northants Lower Junior Cup
Irchester United Res 11–0 Harpole Res
(not 12–0 or 9–0 as variously posted)

LEARN

and play

Small Wonders

day nursery & out of school club

Open 7.30am until 6pm

Funded places available, please call to check availability

We offer an award winning purpose built day nursery and out of school club

- ★ We have places available to enrol children immediately who have been attending another local nursery that has closed in Thrapston. We will offer those parents free registration, which would normally cost £50. We would welcome the opportunity to show you our nursery at any time.
- ★ Highly experienced professional and caring team
- ★ Focused activity room access with qualified teacher every day for those children going to school in this calendar year - focusing on Numeracy, Phonics, ICT and 'getting ready for school'
- ★ Close links with all local schools including Laxton Junior School and Oundle Primary School
- ★ Forest School included in fees throughout the year - working with Northamptonshire Rangers
- ★ Yoga for PreSchool with a professional instructor included in fees
- ★ Newly renovated nursery, Out of School and Holiday Club - over £40,000 spent on new equipment. Recent events include Mobile Planetarium, Popdance Workshop, Zumba and Sublime Science.

We would really welcome the opportunity to show you around our Nursery so please call us or email at smallwondersnursery@firstforchildcare.com to arrange a visit. We look forward to your call.

Unit 2A, Eastwood Road, Oundle PE8 4DF

Tel: 01832 274929