

# Nene Valley

## news

Your local independent community newspaper for East Northamptonshire

**Tel: 01522 513515/  
01832 272299**

We want to hear from you,  
so please submit your  
news story or event at  
[www.nenevalleynews.co.uk](http://www.nenevalleynews.co.uk)

Inside...



## Spotlight on Weddings

Page 4



## Stanwick WI raises funds for a defibrillator

Page 10

## In Brief

### Rotary Club of Oundle

The Rotary Club  
of Oundle were  
delighted to

welcome some very  
special guests to their  
recent meeting at the  
Chequered Skipper in  
Ashton.

Rob Sadler, President  
of the club was pleased  
to present a cheque for  
£500 to the Peterborough  
based Salvation Army and  
it was gratefully received  
on their behalf by David  
Ledger. The Salvation  
Army support the Rotary  
Club of Oundle at their  
annual Christmas Concert  
held at St Peter's Church.

A fantastic presentation  
was given by Sam Harvey  
who had recently returned  
from an exciting week at  
The Calvert Trust. Rotary  
sponsored Sam to attend  
and from the feedback  
received, it sounded as  
though Sam had a very  
rewarding and memorable  
week. The Calvert Trust  
offers young people  
with various disabilities,  
the opportunity to  
explore their spirit of  
adventure in a safe caring  
environment.

If you would like to learn  
more about the activities,  
fundraising and the social  
element of the Oundle  
Rotary Club, visit [www.oundlerotary.org](http://www.oundlerotary.org).

Rotary meet on the first  
and third Monday of every  
month at the Chequered  
Skipper in Ashton.

# Make the most of your local area



A picnic is the  
perfect way to while  
away an afternoon  
in the sunshine.

of a summer picnic hasn't  
changed over the years the  
types of food and how it was  
served has. For example  
the humble sandwich  
wasn't introduced until the  
eighteenth century and there  
is some evidence of different  
picnicking paraphernalia in  
National Trust collections.

Alison Mitchelson,  
National Trust Collections  
Registrar in the Midlands,  
says: "There are lots of  
unusual, quirky things in  
National Trust houses in  
the Midlands and these  
include a number of objects  
connected with picnics.  
From photos and paintings,  
to picnic baskets and tea  
services. You'll be amazed  
at what you can discover  
when you visit."

Not sure where to go on  
the next summer picnic?  
Visit <http://www.nationaltrust.org.uk/Midlands-picnics>  
to see the National Trust's  
top ten picnic spots in the  
Midlands. Alternatively,  
just pack up a hamper,  
backpack or cool box with  
all your favourite treats and  
check out the National Trust  
places near you to find your  
own top spots!

With such a variety  
of National Trust  
places across  
Northamptonshire it's easy  
to be spoilt for choice when  
trying to pick a spot to lay  
down a blanket and enjoy  
a summer feast. Will it be in  
the shade of the mysterious

garden lodge at Lyveden  
New Bield or amongst the  
giant topiary in the Green  
Court at Canons Ashby?

Most of us think of a  
picnic simply as a meal with  
friends and family outside,  
but did you know that in  
years gone by it meant a

gathering of people in any  
location where they would  
share a meal that they had  
all contributed to? It wasn't  
until the early nineteenth  
century that the word picnic  
had stronger links to a meal  
eaten outdoors. Of course  
the concept of alfresco

dining dates back much  
further to the medieval  
hunting parties of the  
fourteenth century, where  
they would have enjoyed  
cold meats and game and  
celebrated for days rather  
than just a sunny afternoon!  
Although the enjoyment



YOUR

# Perfect wedding outfit

Frocks – the dress and accessories boutique in Thrapston, caters for all your special occasions.  
Our extensive range of Mother of the Bride/Groom outfits, wedding guest and bridesmaid  
dresses are available in sizes 6 through to 22. Plus we can also help with those all-important  
finishing touches - with stunning accessories to help complete your outfit.

66 High Street, Thrapston, NN14 4JH. T: 01832 733100 E: [info@frocks.co.uk](mailto:info@frocks.co.uk) W: [frocks.co.uk](http://frocks.co.uk)





# Awards celebrate best of Northamptonshire's heritage

Heritage organisations from Northamptonshire were recognised recently at the Northamptonshire Museums and Historic Houses Forum's Heritage Awards, which celebrate the county's outstanding heritage through the work of almost 50 museums, historic houses and other historic organisations.

Northamptonshire has the highest concentration of historic houses in England, as well as almost 50 museums, most of which are run by passionate volunteers. This sector plays a vital role in attracting visitors to the county each year.

At the ceremony, held at St Peter's Church, Oundle on Thursday 16th July, winners included Oundle Museum who won Best Exhibition and Kettering Museum and Art Gallery who won Heritage Site of the year. Desborough Heritage Centre scooped the People's Choice Award, a publicly voted category reflecting the population of

Northamptonshire's favourite heritage destination supported by BBC Radio Northampton.

The awards are organised by a sub-committee of the Northamptonshire Museums and Historic Houses Forum (NMHHF) a network, run by a volunteer committee, dedicated to supporting and developing heritage organisations in the county. The Awards ceremony was hosted by BBC Radio Northampton's John Griff and was also attended by many VIPs including Councillor Heather Smith and the Mayor of Oundle, Councillor Paul King. The awards were sponsored by Museum Development East Midlands, the County Council, the Northamptonshire Community Foundation and supported by BBC Radio Northampton.

The winners of the 2015 Northamptonshire Heritage Awards are:

- **Best Exhibition:** Highly Commended Kettering Museum and Art Gallery for

#selfies exhibition, WINNER Oundle Museum for 'Oundle 1851' Exhibition

- **Best Event:** WINNER Canons Ashby (National Trust) for A Victorian Christmas at Canons Ashby
- **Community Award:** Highly Commended Desborough Heritage Centre for 'Exchanging Museums' WINNER Kettering Museum and Art Gallery for 'Kettering Faces of the First World War'
- **Best Volunteer Project:** Highly Commended Rushden Museum for 'Rushden's Journey

## Northamptonshire Heritage Awards announce the winners

through the First World War' WINNER Towcester Museum for 'Volunteers Celebrating the History of Towcester'

- **Best Special Project:** Highly Commended Kettering Museum and Art Gallery for 'On the Wagon: Kettering's Temperance Portraits' WINNER Canons Ashby for the 'Brew House Bookshop'
- **People's Choice Award:** Desborough Heritage Centre
- **Heritage Site of the Year:** Kettering Museum and Art Gallery

## Genealogy jottings

Picture the scene... It is the height of World War Two and you are a young man, trained as a radio operator in the RAF.

Although you are able to read and send Morse code at 34 words per minute, the last thing that you expected was to be stuck inside an old Halifax Bomber, flying up and down the Norfolk coast, listening to codes sent from the Russians who had used their Enigma machine to create messages. Well, that's what my Dad did! You can actually read about his exploits – and how he once told HM the Queen to get off the telephone – if you visit connected-earth.com, the website that tells the history of communications.

Such websites are wonderful tools to use to enhance our knowledge of

**By Jan Pearson Genealogy Specialists**  
*Tracing Our Past, Discovering Our Genes (TOP DOG)*  
[www.genealogy-specialists.com](http://www.genealogy-specialists.com)

the lives of our forebears. Sometimes you can find an actual snippet about your ancestor but in any case, they will help you to understand and appreciate what life was like at the time. If you have laid your hands on a certificate as mentioned in previous jottings, you could well come across the occupation of the father of the baby whose birth is being registered or that of the father of the bride or groom – and it does not just say 'Labourer' or 'Ag. Lab.'! If, like me, your grandfather was a soldier when he married, you should find his army number recorded on

the certificate. This can then lead you to his army record, where he was stationed, where he fought and what his occupation was during that time.

Maybe he was in the Air Force based at one of the local airfields such as Polebrook, Kings Cliffe or Deenethorpe, all of which have memorials to those in the RAF, American and other Allied Air Forces. Living so close to these memorials, I wonder how many of us have actually visited them – if we knew about them to begin with! The next time that we have a nice day, why not visit them and see if any of your family is recorded.

## Want to place an advertisement or submit an article?

If you wish to contribute or have any comments please email [news@nenevalleynews.co.uk](mailto:news@nenevalleynews.co.uk) or call 01522 513515. To advertise, call 01522 513515 or 01832 27229. Alternatively you can email [advertising@nenevalleynews.co.uk](mailto:advertising@nenevalleynews.co.uk)

If you are not receiving your copy of Nene Valley News, please email [distribution@km-media.co.uk](mailto:distribution@km-media.co.uk) or telephone 01522 513515.

If you would like to receive this

publication as a download, Nene Valley News is available online as a pdf at [www.nenevalleynews.co.uk](http://www.nenevalleynews.co.uk).

You can also subscribe to Nene Valley News for £39 per annum.

Nene Valley News is produced for Nene Valley News Ltd, registered office Unit 4, Eastwood Road, Oundle PE8 4DF, by their agents KM Media & Marketing, County House, 9 Checkpoint Court, Sadler Road, Lincoln, LN6 3PW.

### Copy dates for Nene Valley News

**Publication date: Saturday 15th August**  
**Articles to the editor by: Wednesday 5th August**

**Publication date: Saturday 29th August**  
**Articles to the editor by: Wednesday 19th August**

**KM**  
**KM Media & Marketing**  
Your partner in publishing  
ONLINE | IN PRINT | IN DIGITAL

## Letters to the editor

If you would like to submit a letter to the editor please send it to [news@nenevalleynews.co.uk](mailto:news@nenevalleynews.co.uk) for consideration. The maximum word count is 200 words.

Dear editor,  
Do your readers realise that Corby Magistrates' Court is one of the courts listed for closure under current plans?

Our area, as one of the fastest growing in the country, needs access to good local services. Local justice, which is seen to be done by local people to local offenders in a local court, is one of those key services. The closure of Corby Magistrates' Court would mean victims, witnesses and offenders making expensive, lengthy and difficult journeys to court in Wellingborough or Northampton from areas of rural north

Northamptonshire which are not well served by public transport.

We are fighting the erosion of local justice by opposing the closure of Corby Magistrates' Court and have launched a petition 'Stop the Closure of Corby Magistrates' Court' via [www.change.org](http://www.change.org), [https://www.change.org/p/terry-knights-stop-the-closure-of-corby-magistrates-court-d4aa4520-4a76-49ce-85b6-cacba11b581d?recruiter=166694874&utm\\_source=share\\_petition&utm\\_medium=email&utm\\_campaign=share\\_email\\_responsive&rp\\_sharecordion\\_checklist=control](https://www.change.org/p/terry-knights-stop-the-closure-of-corby-magistrates-court-d4aa4520-4a76-49ce-85b6-cacba11b581d?recruiter=166694874&utm_source=share_petition&utm_medium=email&utm_campaign=share_email_responsive&rp_sharecordion_checklist=control)

We urge your readers to join our campaign.

Yours faithfully,  
Terry Knights, Chairman  
Corby Magistrates' Bench

## The Foot Clinic at Images

128 Newton Road  
Rushden  
Northants

Rose Wesley  
MCFHP MAFHP

All aspects of foot healthcare including:

- Nail Cutting
- Corn Removal
- Ingrowing Toenails
- Hard Skin Removal
- Fungal Nail Treatment
- Verruca Treatment

Open  
Wednesday  
to Saturday

07854 514323  
01933 318902

46 Cartrill Street, Raunds, NN9 6ER

**RAUNDS RAINBOW NURSERY SCHOOL**

**Free 15 hours or 11 hours per week**

**Free Entitlement:**  
**Aged 2+**  
**11 hrs 52 weeks**  
**15 hrs 38 weeks**



Worth over £2000 per year  
Reserve your place for next term

01933 624500

[www.raunds.org](http://www.raunds.org)

Come & visit us • Open 8 till 6 • Children from 2 years



## Rushden Golf Club

Monday, Wednesday & Friday Special –  
18 Holes of Golf & Bar Meal: £18

Membership available from £54.69 per month

Looking for somewhere new to eat?  
With its pleasant surrounds and easy parking, why not enjoy a meal at Rushden Golf Club. Our 2 for £10 special covers a range of popular meals.

Wednesday & Thursday evenings enjoy a 2 course meal for £7.95 or 3 course meal for £9.95

Open from 10.30am daily  
Rushden Golf Club, Kimbolton Road,  
Chelveston, Wellingborough, Northants NN9 6AN  
01933 418511  
[www.rushdengolfclub.org](http://www.rushdengolfclub.org)

## WASP

### NEST REMOVAL & MANAGEMENT



**Oundle based. Qualified Experienced**  
**All pest problems tackled**

**Call Colin on**  
**01832 770483 / 07538 688106**



# Young business brains take on the 'Dragons'

The competition, organised by The East Northamptonshire College, saw teams of entrepreneurs from four local schools (Rushden Academy, The Ferrers School, Huxlow Science College and Manor School) pitch their ideas and business plans to a panel of local Business Dragons.

The 'Dragons' included Peter Waddup (Director of Scotts of Thrapston), James Maziak (Managing Director of Maziak Compressor Services Limited), Katherine Dillon (Director of Seeds of Change) and Emily Carrington (Solicitor of Borneo Martell Turner Coulston).

The final, which was held in the Council Chamber on 17th July, gave

**East Northamptonshire's finest young business brains put their skills to the test at the final of the 9th Business Dragons event, hosted by East Northamptonshire Council.**

the young people the opportunity to present their original business ideas to the panel, having considered the design of the product, finance, staffing, manufacture, competition and profitability.

The Best Overall Winner trophy (supplied by East Northamptonshire Council and presented by the Chairman) went to Pillihod, Rushden Academy. Their idea is to produce a contact lens featuring transitional technology that would replace the

need for sunglasses and could be used by companies to give to their employees to prevent glare while driving.

The Best Presentation trophy (supplied by Scotts of Thrapston) was awarded to Easy Roll, Huxlow Science College, for their pitch of having a contraption that aids with putting up wallpaper to make redecorating easier.

LEGC, Rushden Academy, won the Best Innovation trophy (supplied by Maziak Compressor Services Limited). Their idea is for a smart date sticker that can be put on food packaging and changes colour to represent the best before date, use by date and when the food item is out of date.

Chairman of East Northamptonshire Council, Marika Hillson, said: "I never expected such a high standard of business ideas to be offered to the Dragons at this event. Each and every student should be very proud of themselves. Well done to everyone."



The 'Dragons' and Chairman Marika Hillson with Pillihod, Rushden Academy



Rushden Children's Centre staff raising money at Rushden's Party in the Park

## Children's charity gives families a well-deserved beach break this summer

East Northants Children's Centres, run by children's charity Spurgeons, are raising money to take targeted families – who may not otherwise have been able to enjoy a visit or break – on a seaside day trip this summer.

The trip is being organised by staff at Rushden Children's Centre and is an invite-only event. Only targeted families from the local community are invited to visit Hunstanton on 18th August. The families have been selected based on their level of need and include single parent families and those living in poverty.

More than 100 people will go on the trip so the aim is to raise £850 to cover the cost and £100 of this was recently raised at Rushden's

Party in the Park through their tombola stall.

Rob Hunter, Family Support Worker at the centre who is organising the trip, said: "The idea of a summer day trip was put forward by a parent during a home visit. Trips like these are incredibly important as they give us the opportunity to take families with small children who may not have been to the seaside before or would have found it incredibly difficult to do so singlehandedly.

"With our help and support, we can offer targeted families within East Northants the chance to spend some quality family time together and to allow them to make many wonderful memories on the day, that they can then treasure for the rest of their lives."

Visit your local

## DB Factory SHOE SHOP

**FOR THE LARGEST SELECTION OF SHOES IN YOUR AREA**

**BEST VALUE IN YOUR AREA!**

We stock Men's and Ladies' boots, shoes and slippers, as well as Children's styles including football boots and wellies!

**Brands include: Marco Tozzi, Heavenly Feet, Skechers, Earth Spirit, Dr Keller, Natureform and Dr Martens**

**Opening times: Monday to Saturday 10am-5pm Sunday 10am-4pm**

Address: DB Shoes Ltd, 19-21 Irchester Road, Rushden, Northants, NN10 9XF

[www.dbfactoryshop.co.uk](http://www.dbfactoryshop.co.uk)

**FREE ROADSIDE PARKING**

**WIDE FEET?**

Then why not VISIT OUR **SPECIALIST SHOE FITTING CENTRE** where our team of experienced shoe fitters will help you choose the style of footwear that is suitable for your needs!

Telephone: **01933 410 305**

Opening times: Monday to Saturday 10am-4pm

[www.widerfitshoes.co.uk](http://www.widerfitshoes.co.uk)

**Plus get an additional 10% OFF** (excluding sale items)

when you bring this advert and quote code 1513FNV. Offer valid in both shops until 1st September 2015

**Regent Wrought Iron Ltd** The Regent Street Wrought Iron Works

180-186 Regent Street Kettering Northants NN16 8QH Phone 01534 495892

High Quality Gates and Fencing Hand Made on the Premises since 1963

Visit our website for our Online catalogue [www.regentiron.co.uk](http://www.regentiron.co.uk)

Single gates from £80.00  
Side entry from £90.00  
Double gates from £120.00

We have 18 styles to choose from  
All on show in our showroom  
Full fitting & painting service.

**Automatic Estate Gates**

- Highest Quality Equipment
- Up To 14" Opening
- Flat Draped or Bow topped
- Fully Installed & Painted
- **FREE** First Year Service
- Guaranteed for 2 Years
- Full back up & yearly service
- We have been installing automation since 1998
- Fully Pressure tested and certified to BS 12453

**We can automate your existing gates (if suitable) or upgrade old equipment to meet BS 12453 safety regulations**

**Beat The Burglar**  
Free security locking bolts  
Fitted to all our side entry gates  
Or full range of mortise locks fitted

Has your garden wall / fence had it? Replace it with wrought iron!  
**LASTS A LIFETIME USUALLY FITTED IN A DAY.**

**Kings Arms**

Pub & Restaurant

Alongside our menu we also offer some fabulous deals...

**Tuesdays – Beer & Burger**

**Wednesday – 10% OFF ALL FOOD!**

**Thursday – STEAK NIGHT! 20% off Wines & Steaks!**

**Sundays – Normal Menu & Roasts!**

**Lunchtimes – 2 for £12 menu**

**PUB QUIZ - 7pm**  
Every other Sunday £1pp  
Win a round of drinks & a chance for the rolling jackpot!

**Next quizzes 2nd August & 16th August**

**Dine in the bar or restaurant**

59 High Street, Thrapston  
01832 733911

**NENE COURT SHOPPING**

SEVEN DAYS A WEEK OPEN

Bringing shopping & people together

## FANTASTIC SHOPPING FOR ALL AGES!

**JUST OFF THE A45 WELLINGBOROUGH**

Photographs by Bob Caddick [www.bobcaddickphotography.com](http://www.bobcaddickphotography.com)

- Austintacious Hair Salon
- Bella Barista
- Bestbuys Outdoor Store
- Bob Caddick Photography
- Burditts Electrical Store
- Elements Interiors
- Fab Footwear
- Hart Family Brewers
- Hunters Emporium
- Mochaberry Gift Boutique
- Sportsframe
- The Craftworks
- The Garden Deli
- The Gun Cupboard
- The Pump House Cafe
- Wellingborough Cycles
- When I Was A Kid
- Wholesale Kitchen Direct

Nene Court, The Embankment, Wellingborough NN8 1LD [nenecourt.com](http://nenecourt.com)



# Spotlight on weddings

## The Great Thrapston Wedding!

A year of planning saw Helen Davis of [www.nenelocal.co.uk](http://www.nenelocal.co.uk) try to use as many Thrapston businesses as she could to plan her wedding. The Great Thrapston Wedding Challenge was 'Anything bought for the wedding MUST come from Thrapston'.

The story began in Tasty Bite Thrapston. The couple married in Tasty Bite's courtyard garden and their reception was an afternoon tea party in the café itself. The Tasty Bite Café is one of the rare remaining cast iron fronted Victorian buildings in the UK, and is a listed building.

Owner, Sarah Whiteside and her team planned and cooked the fantastic wedding banquet, and guests gave them a resounding cheer and all said they would return at their earliest opportunity to Tasty Bite Thrapston.

The wedding gown was a Sorella Vita from Gowns & Garters, but as Nene Local Magazine loves Frocks they recommended them to all the female guests and Mother of the Groom for their wedding outfits and accessories.

The happy couple have used a huge amount of local businesses from Thrapston and documented each purchase they made – Read

**T.B.T.**  
TASTY BITE THRAPSTON  
CAFÉ & TEA SHOPPE



  
**Colemans**  
**Craft**  
*Warehouse*  
[www.colemans-online.co.uk](http://www.colemans-online.co.uk)  
Unit 6, Brindley Close,  
Rushden, NN10 6EN.  
T: 01933 355530

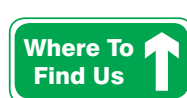


1000's OF ART, CRAFT & HOBBY  
SUPPLIES ALL UNDER ONE ROOF!

**FREE DEMONSTRATIONS!**

**SAVE 20%!**  
Off non-offer items

**FREE PARKING**



Unit 6 Brindley Close  
Rushden  
Northants  
NN10 6EN

T: 01933 355530

E: [craft@colemangroup.co.uk](mailto:craft@colemangroup.co.uk)  
[www.colemans-online.co.uk](http://www.colemans-online.co.uk)

Please Note: the Craft Warehouse only opens for our Special Events, Craft Workshops & published Shopping Days.



## 1000's OF CRAFT & HOBBY SUPPLIES - ALL AT GREAT PRICES & ALL UNDER ONE ROOF!

At Rushden, Northants our 5000 sq. foot warehouse has 1000's of craft, card making, beading, fabric, needlecraft & cake decorating supplies - **all at great prices!**

On the **first Saturday of each month** we hold one of our famous **Big Craft Days**. We have simultaneous craft demonstrations by professional demonstrators which are continuous between 10.00am and 4.00pm. There are lots of **special offers** and **free refreshments**. We have plenty of helpful and knowledgeable staff on hand to give you advice on all the latest products. We open for shopping at 8.30am.

**FREE EVENT**

## Are You Planning A Wedding This Summer?

If you or yours have a "Big Day" on the horizon make sure you visit us!

If you love the look of hand-crafted wedding stationery, but not the cost, we can help you make your own & achieve stunning, professional results at affordable prices.

Choose from our large range of cards blanks, envelopes and exquisite embellishments, from ribbons & bows to jewels & crystals, we can supply all you need in your chosen colour scheme and theme for invitations, orders of service, place cards and favour boxes.

We also offer a comprehensive fabric and décor section so you can indulge your vintage chic ideas for gorgeous bunting, table decorations and unusual little extras and turn them into reality – all at very reasonable prices!

We are open on Thursdays, Fridays and Saturdays 9.00 – 4.00 and Sundays from 10.00 – 4.00 and always have plenty of helpful and knowledgeable staff on hand to give you advice and guidance on your chosen project. So come and browse at leisure in our welcoming surroundings. There is always a cup of tea or coffee on offer so you can plan this part of your Big Day in a relaxing and creative environment!

## Expanded Wedding Product Range

After many customer requests we have expanded our range of Wedding products & accessories. We now stock bridal posies, ring cushions, guest books, cup cake boxes, table sprinkles, confetti & much, much more!





the whole story at [www.nenelocal.co.uk/2015/07/wedding2015](http://www.nenelocal.co.uk/2015/07/wedding2015) on Nene Local Magazine.



#### The Bridge Hotel



The Bridge Hotel is based in the market town of Thrapston, Northamptonshire and has a wonderful mix of old and new, with old oak beams and period furniture combined with modern facilities to create a perfect venue for your special day. We are licensed to hold civil ceremonies and partnerships in our stunning ceremony room which will take your breath away and create the perfect romantic mood. We can cater for up to 100 guests for a sit down meal

in our Rothwell Suite and up to 150 guests for the evening reception with a private bar within the room. For a more intimate reception we have the Latimer Suite which can cater for up to 60 for a sit down meal and up to 100 in the evening.

Whether it's a Civil Ceremony in our beautiful ceremony room or a Church wedding with a reception at the hotel, you are assured that your special day is in experienced hands. The wedding coordinator and dedicated team will lead you through the whole process from the initial meeting, planning and through to the big day itself.

Deals start from £1999.

#### Colemans Craft Warehouse



If you are planning a wedding this summer, then look no further than Colemans Craft Warehouse for everything you need to

make beautiful and unique wedding stationery.

From top quality cards and envelopes to exquisite embellishments, from ribbons and bows to jewels and crystals, Colemans Craft Warehouse can supply all you need in your chosen colour scheme and theme for wedding invitations, orders of service, place cards and favour boxes.

There is also a comprehensive fabric and décor section so you can indulge your vintage chic ideas for gorgeous bunting, table decorations and unusual little extras and turn them into reality – all at very reasonable prices!

They are open on Thursdays, Fridays and Saturdays 9am-4pm and Sundays from 10am-4pm and always have plenty of helpful and knowledgeable staff on hand to give you individual advice and guidance on your chosen project. So come and browse at leisure in their welcoming surroundings. There is always a cup of tea or coffee on offer so you can plan this part of your Big Day in a relaxing and creative environment. Not to be missed!



## Weddings at THE BRIDGE HOTEL

- Deals start from £1,999
- Brand new wedding menu options
- Fantastic wedding deals
- Book now for 2016

For more information about our wedding brochures and deals please call our wedding team on 01832 732128.



# Need a new garage door?

– THE LARGEST SELECTION IN THE UK IS IN WELLINGBOROUGH, WITH 126 MODELS OF GARAGE DOORS FOR YOU TO LOOK AT, TOUCH, TEST & FEEL

BOOK  
YOUR  
SURVEY  
TODAY

YOUR 6 POINT  
GUIDE TO  
HELP DECIDE  
WHAT YOU  
NEED

1. WILL YOUR GARAGE DOOR NEED EXTRA LOCKS?
2. HOW MUCH ROOM DO YOU NEED FOR YOUR CAR?
3. WOULD YOU LIKE TO HAVE A MAINTENANCE FREE MATERIAL?
4. DO YOU USE YOUR GARAGE AS PART OF YOUR LIVING SPACE?
5. WOULD YOU LIKE AN AUTOMATIC DOOR WITH A REMOTE CONTROL?
6. HOW WOULD YOU PREFER IT OPEN : UPWARD, OUTWARD, AROUND THE CORNER, ON SIDE HINGES OR OTHERWISE?



HEAD OFFICE & MAIN SHOWROOM  
6-8 MEADOW CLOSE, FINEDON ROAD,  
WELLINGBOROUGH, NN8 4BH

OPEN HOURS: MONDAY-FRIDAY 8.30-5.30, SATURDAY 9-4

**01933 229135**  
[www.thegaragedoorcentre.co.uk](http://www.thegaragedoorcentre.co.uk)





East  
Northamptonshire  
Council

## Notice of planning applications received

**Notice is given that the following applications have been received together with the last date for making representations.**

### Ashton

**15/01283/FUL (15/08/2015) (Info)**

Change of use of agricultural barn to single residential dwelling, creation of noise attenuation bund and associated landscaping together with provision of car park for adjacent rifle range at Farm Buildings Adjacent Elmington Top Lodge Ashton Wold Ashton PE8 5LZ

**15/01299/LBC (22/08/2015) (LBRegs)**

Internal alterations to listed building as follows: ground floor - remove old bathroom, remove wall between lounge and build cupboard. First floor - change bedroom to bathroom, build new wardrobe on landing and remove all plumbing, cylinder and tank in existing cupboard in bedroom 2 at Chestnut Cottage 14 The Green Ashton PE8 5LD

### Easton-on-the-Hill

**15/01296/FUL (15/08/2015) (Info)**

Erection of first floor rear extension for proposed bedroom and en-suite at 8 The Retreat Easton on the Hill Stamford PE9 3NE

### Higham Ferrers

**15/01268/ADV (22/08/2015) (LB/CA)**

1 x non illuminated fascia  
1 x non illuminated staff information panel  
1 x non illuminated hanging treatment panel  
5 x A1 non illuminated poster holders at 40 High Street Higham Ferrers Rushden NN10 8BL

**15/01269/LBC (22/08/2015) (LBRegs)**

Proposed new signage and method of fixing: non illuminated fascia sign 1 x non illuminated staff information panel 1 x non illuminated hanging treatment panel 5 x A1 non illuminated poster holders to Grade II Listed Building at 40 High Street Higham Ferrers Rushden

**15/01301/FUL (22/08/2015) (Info)**

**(LB/CA)** New pitched roof to replace existing flat roof and single storey side extension at 8 Lancaster Street Higham Ferrers NN10 8HY

### Irthlingborough

**15/01249/FUL (22/08/2015)**

**(LB/CA) (Info) and 15/01250/LBC (22/08/2015) (LBRegs)(LB/CA)**

Change of use of business suite (B1) to health suite (D1) including internal partitioning at Studio 3 Diamond Business Centre Attley Way Irthlingborough NN9 5GF

### Islip

**15/01158/VAR (15/08/2015) (Info)**

Variation of Condition 2 to use a new roof tile pursuant to application 14/02206/FUL: Demolition of existing Pavilion and erection of replacement Pavilion Facility and ancillary works (revised scheme following approval 14/00008/FUL) at Islip Cricket and Football Ground Toll Bar Road Islip

### Luddington

**15/01265/FUL (15/08/2015) (Info)**

Alterations and extensions to dwelling, new detached garage and new access at Ashtree Cottage Luddington in the Brook Peterborough PE8 5QU

### Oundle

**15/01237/FUL (22/08/2015) (Info) (LB/CA)**

1 extension to existing building to provide a new industrial office and retail space. Extension to have a single ridged roof at The Wharf Station Road Oundle

**15/01254/FUL (22/08/2015) (LB/CA)**

Redevelopment of part of the existing natural turf playing fields and an adjacent unused overgrown section of the natural turf sports field into two synthetic grass surfaced sports pitches with perimeter fencing, floodlighting and associated features including new paths and warm up areas at land off Pavilion Drive Oundle PE8 4JA

**15/01285/LBC (22/08/2015) (LBRegs)**

Replace existing joinery including doors and windows to east and west elevations, replace failing stonework and re-point west street facade at 5 Mill Road Oundle

### Raunds

**15/01112/OUT (15/08/2015) (Info)** Outline:

erection of three detached dwellings (all matters reserved except access and scale)

at The Willows House Brooks Road Raunds NN9 6NS

### Ringstead

**15/01295/FUL (15/08/2015) (Info)** Erection of temporary mobile home for agricultural worker together with livestock building at Tithe Farm 3 Ham Lane Ringstead NN14 4AT

### Rushden

**15/01262/FUL (15/08/2015) (Info)** Two storey front and side extension at 14 Dean Close Rushden NN10 9EH

**15/01273/FUL (15/08/2015) (Info)** Single storey rear extension at 140 St Margarets Avenue Rushden NN10 9PN

**15/01284/FUL (15/08/2015) (Info)** Change of use and modification of existing dwelling (C3) to church meeting hall (D1) with associated car parking and modified highway access at 131 Bedford Road Rushden

**15/01286/FUL (15/08/2015) (Info)** Proposed two storey side extension, single storey rear extension and alterations to the existing home office at 152 Hall Avenue Rushden NN10 9EU

**15/01291/FUL (15/08/2015) (Info)**

Demolition of conservatory and new single storey rear and side extension at 23 Fairmead Crescent Rushden NN10 9NB  
**15/01327/FUL (15/08/2015) (Info)** Provision of an area of staff car parking and associated point of access at Former Recycling Centre Car Park and Council Depot Newton Road Rushden

### Stanwick

**15/01302/FUL (15/08/2015) (Info)** Single storey and two storey rear extension at 10 Grange Road Stanwick NN9 6PZ

### Sudborough

**15/00948/FUL (22/08/2015) (LB/CA) (Info)** Change of use of farmland to domestic grounds, construction of residential access drive and erection of new gates to Newton Lane at Manor Farmhouse Newton Lane Sudborough NN14 3BF

**15/00949/LBC (22/08/2015) (LBRegs)**

Part demolition of two sections of boundary walls, installation of pedestrian gate in garden wall, removal of farmyard wooden gates and railings at Manor Farmhouse Newton Lane Sudborough NN14 3BF

### Titchmarsh

**15/01290/FUL (22/08/2015) (LB/CA)**

Two storey extension to existing cottage at 25 High Street Titchmarsh NN14 3DF

**The reason for applications being advertised is as follows:**

**Art8 - Town and Country Planning (General Development Procedure) Order 1995.**

**Info - Non-statutory - included for information only.**

**LB/CA - Planning (Listed Buildings and Conservation Areas Act 1990.**

**LBRegs - Planning (Listed Buildings and Conservation Areas) Regulations 1990.**

### Significant applications

**All "significant" applications are highlighted in green. These are defined in the 2006 Statement of Community Involvement as those for:**

- 100 dwellings and over
- residential development of 3ha or over if number of dwellings not known
- 1000 square metres of floor space or over
- commercial/industrial development of 1ha or over if floor area not known
- would, in the council's opinion, alter the overall character of the locality by means of scale, use or visual appearance
- would, in the council's opinion, be sensitive due to substantial demolition in a conservation area
- would, in the council's opinion, be sensitive due to development next to a listed building

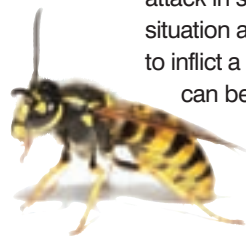
**For more information on "significant" planning applications, visit [www.east-northamptonshire.gov.uk/dcnofication](http://www.east-northamptonshire.gov.uk/dcnofication)**

**David Reed, Head of Planning Services  
Dated 1 August 2015**

**Consultation deadlines will differ for each application. Please go to [www.east-northamptonshire.gov.uk/planningapplications](http://www.east-northamptonshire.gov.uk/planningapplications) for details.**

## Invasion of the wasps!

The common wasp lives in colonies which grow throughout the summer and can cause serious alarm when present in larger numbers, or when colonies are close to humans. Many thousands of wasps can serve a single queen and commonly their nests are concealed in hard-to-reach places, sometimes underground or in cavities in properties of loft spaces.



Wasps react aggressively to being disturbed and can attack in swarms in this situation and are very likely to inflict a painful sting, which can be dangerous to those with allergies. Indeed a sting in the throat can be fatal. Under no circumstances should anyone but a qualified pest controller attempt the removal of a wasp nest.

### Identification

This is rarely a problem

with wasps, which have a black and yellow abdomen pattern, black head and thorax, six legs and heavily-veined wings. An adult wasp is similar in size to a worker honey bee at 12-15mm in length. Queens are larger, at around 20mm.

### The Difference Between Wasps And Hornets?

Hornets are larger than wasps at 20-30cm. Wasps are black and yellow with little hair, whereas hornets are more normally chestnut brown and

**A wet spring followed by a long, hot summer is great news for those of us with fruit trees. But it's also pretty exciting if you happen to be a wasp, and we can be expecting to encounter plenty of them over the coming weeks.**

yellow with some hair. Wasps tend to feast on food waste, fruit and sugary substances and some insects, and can swarm when provoked. Hornets mainly feed on insects and do not swarm. Wasps are quick to sting and can sting repeatedly, and are common in late summer. Hornets usually sting only when provoked and are seen between May and September.

### Wasp Nest Removal

Never tackle a wasp nest yourself. Wasp nest removal should only ever be tackled by an experienced and qualified pest controller who has the right protective clothing and the correct professional strength extermination products. One visit is usually enough to exterminate a wasp nest colony.

British Bug Control is a local company that is highly experienced in wasp nest removal and also specialises in re-homing bee colonies. If you are having problems with wasps, or any other pests, around your home or business, give Colin a call on 01832 770483, or 07538 688106.



# Glaphorn teenager sheds locks

Annabel's hair has been donated to the Trust, which provides real hair wigs for children in the UK and Ireland who have lost their own hair as a result of cancer treatment.

The Oundle and King's Cliffe Middle School pupil is delighted with her new look, which was created free of charge at The Cutting Company salon in Stamford.

She said: "I'd had long hair since I was little and thought it would be nice to have a change. I researched the pixie cut and thought there was no point in wasting my hair when I had it done, so I decided to help the Little Princess Trust.

"As a girl always having long hair I realise how awful it must be to lose

**Thirteen-year-old Annabel Ivens had 16 inches cut from her below-the-shoulder hair to take on a new pixie-look and raise over £500 for the Little Princess Trust.**

your hair, so that's why I wanted to do something for the Trust.

"In addition to hair for the wigs, fundraising is really important, too, because the Trust has to pay around £350 for each special wig it supplies.

"I spoke to my schoolmates at a year group assembly and set up a JustGiving page, hoping to raise £350 – but I've had so much support I've reached £550 and money is still coming in.

"I'm really happy with my new style and quite proud that I've raised a lot more than my target. I know

my friends are going to donate, too – but I think they were waiting to see that I would have it cut, first!

"I had been thinking about having it done for quite a long time, so when the day came round

I was quite positive about it."

Mum, Jane said: "Me, her dad Karl and brother Will are all very proud of her. As a teenager it was a really brave thing to do – it can feel quite embarrassing at that age

with your hair.

"It was a very selfless thing to do and she has had a lot of compliments from a lot of people who said how nice and thoughtful it was.

"John Goldsmith and his team at the salon were amazing and so supportive – they even sponsored Annabel, too!"

## The annual canvass is here!

East Northamptonshire Council (ENC) will send a letter, known as a Household Enquiry Form (HEF), to every home in the district. The letter will be addressed to the occupier and will contain the details of all those in the household who are registered to vote.

Residents are being asked to confirm the details of those living at that address are correct. Anyone in the household can respond.

If the details are correct, there are four ways to confirm this. The easiest way to let the council know is by text, online or telephone. There is also the option to post the form back using a prepaid envelope.

If the details on the form are wrong, for example, someone has moved away or moved in, you can go online to let ENC know the

**East Northamptonshire residents will start receiving their annual electoral registration canvass forms from Friday 31st July 2015.**

changes. A prepaid envelope will also be provided.

The HEF is vital for local authorities to keep their electoral registers up to date. Not being registered can affect applications for loans, mortgages and even mobile phone contracts. You will also lose the right to have your say at the ballot box.

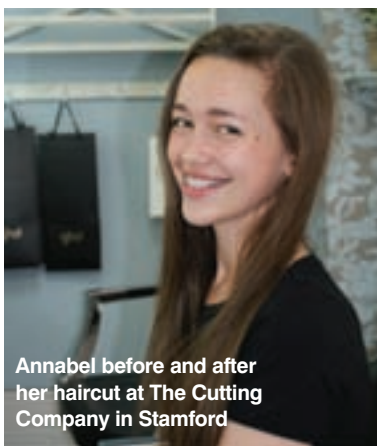
The information requested is required by law. Not responding or providing false information on the form can result in a £1,000 fine.

Residents who do not reply by the end of August will be sent a reminder, then another at the end

of September. If a reply has still not been received by this time, a canvasser will visit you to collect the information on your doorstep.

Steven North, Leader of East Northamptonshire Council said: "The annual canvass is an essential part of local democracy and we urge residents not to ignore the letter when it comes through their door. The elections team will once again be working hard to ensure our residents' details are current."

For more information about the electoral register visit [www.gov.uk/electoral-register/overview](http://www.gov.uk/electoral-register/overview)



Annabel before and after her haircut at The Cutting Company in Stamford



If you would like to support her efforts, go to [www.justgiving.com](http://www.justgiving.com) and search for Annabel Ivens The Great Chop.








Showroom Open  
Monday - Saturday  
9:00 am to 4:30 pm



## PeterCrisp

Design Studio

Quality Kitchens, Bathrooms and Bedrooms

The Name You Can Trust

25/27 Church Street  
Rushden  
NN10 9YU  
01933 356424

[www.petercrisp.co.uk](http://www.petercrisp.co.uk)



# Ciao Glapthorn!

Glapthorn C.E. Lower School sprang a pop-up Italian restaurant on Thursday 16th July. The Year 1 and 2 children had been growing tomatoes, basil, onions and salad leaves all term in their allotment to 'grow their own pizzas'.

They have been learning all about Italy as well as developing their gardening skills in preparation for their classroom transformation into a restaurant. The school was lucky enough to host five Italian schoolchildren

the previous week and so received some great tips about making sure their restaurant was authentic. The children designed and made their own pizzas and then transformed into waiters and waitresses to take orders and serve food to family and friends.

The restaurant was a great success and customers are keen to return! Customer comments included:-

"Food – excellent; Drink – very fruity; Service – fantastic; Helpfulness – amazing! Can't wait to come

back!"

"What a wonderful meal! It was delicious. We were very impressed with the fantastic service from all the waiters and waitresses too. We will recommend your restaurant to all our friends! Thank you!"

Charlotte, aged 7, said: "It was brilliant fun making the pizzas in the morning using some of the things we had grown! Mummy came with her friend from work and had bruschetta, and best of all we got to eat some pizza at the end!"



## Your ABC guide to driving safely

**Driving tips supplied by your local Advanced Motorists Group.**

- J.** When Joining a motorway use the slip road to assess the speed on the main carriageway and to accelerate to match that speed as you enter. If necessary give a clear and early signal to other road users who may pull over to another lane to allow you access. Keep using your mirrors.
- K.** Keep your distance on motorways. An alert driver, when travelling at 70mph in good driving conditions, can stop in a minimum of 96 meters (24 car lengths). Keep between 2-3 seconds behind the car in front. Increase the distance in adverse weather.
- L.** Unfortunately, daylight hours are getting shorter. Regularly check your

Lights are in good working order: Full and dipped beam headlights, side, fog, reversing and hazard warning lights – also number plate and door courtesy lights. Get someone to check outside the car that they are working properly.



For more information visit [www.corby-advancedmotorists.org](http://www.corby-advancedmotorists.org), Facebook: [corbyadvancedmotorists](https://www.facebook.com/corbyadvancedmotorists) or on Twitter@corbyadvanced.

## Quick and easy holiday fruit cake

Packing for a British holiday never seems complete to me without taking a fruit cake. Maybe it's just a childhood habit born of beach huts and long walks, but there's a lot to be said for a cake which can stand heat and cold, rain or shine, be forgotten for a week and still be delicious and sustaining. At the top of a mountain, a slice with a hunk of cheese and an apple makes a satisfying snack, and seems just right with a hot cup of tea when you're freezing from the sea. This is one of the quickest and easiest recipes for it I know.

### Ingredients

6oz butter  
6oz caster sugar  
3 large or 4 small eggs  
9oz self-raising flour  
1 jar of mincemeat  
Splash of milk (if needed)  
NB: Cakes seem to prefer being made in imperial

**By Catherine Burbage**

measurements – eggs just won't go metric!

### Method

Line and grease an 8" to 9" loose bottom cake tin. Cream butter and sugar together until pale. Beat eggs in one at a time with a spoonful of flour each time to avoid curdling. Add the remaining flour and combine gently. Fold in mincemeat and add a drop of milk if the mixture seems dry. Turn the mixture into the cake tin and cook for



around 45 mins in a medium oven. Reduce to a low heat and continue cooking until a skewer comes out clean – about another 45 mins. This will vary depending on your oven, but err on the side of under rather than over cooking. If the top is getting too dark, cover it with greaseproof paper or foil. As soon as you take the cake out of the oven, sprinkle a little more sugar over the top. Allow the cake to cool in the tin.

To comment on any of my articles or if you'd like to see a particular product featured, email me at: [nenevalleyfood@btinternet.com](mailto:nenevalleyfood@btinternet.com)

## We are the champions

**Auction, Dinner & Entertainment Evening.**

AF C Rushden & Diamonds and Community Youth are inviting you to a formal black tie evening event of good food, great fundraising and wonderful entertainment by a live Freddie Mercury Tribute act, 'Mr Mercury', who is from the QEII band – who are the UK's No1 Queen Tribute Band. You can find promotional videos of them on YouTube.

The hosts for the evening are Kettering Park Hotel and the date for your diary is

Friday 4th September. The evening starts at 6.30pm for a 7pm sit down to a delicious three-course meal, raffle and auction at 8.30pm and then entertainment at 9.30pm with a live performance and music to take you to through to midnight.

Tables of 10 are available at £400 or single tickets at £40. Please get in touch with Glenis on 07870 332606 or Tracy on 07912 437057 or simply visit the website to buy tickets direct: <https://www.goldengiving.com/event/wearethechampions>

When booking please state any dietary requirements so that the hosts can be informed prior to the event.

## Parkinson's research uncovered for Rushden, Raunds and Wellingborough area

Parkinson's UK – the support and research charity – is committed to finding better treatments and a cure for Parkinson's. That is why the local branch of the charity is inviting the public to find out more about scientific breakthroughs in Parkinson's research.

People of Rushden, Raunds, Wellingborough and the surrounding area are invited to

a special presentation about the new groundbreaking research funded by Parkinson's. This will be at Irchester Village Hall at 7.30pm on 12th August.

The local group offers information, friendship and support to carers and sufferers. Hannah Churchill, Research Communications Officer from the charity's research team will be the guest speaker and

people will be able to ask questions and find out more about living with Parkinson's.

David Hudson, Chair of the Local Group said: "Every hour someone in the UK is told they have Parkinson's. At the moment there is no cure but we are here to help as best we can. Our work is dependent on donations and it is the generosity of the area that

enables us to continue our work and help to improve the lives of everyone affected."

For more information contact the local group on 01933 353878 or contact the main office on 0808 800 0303 or visit [parkinsons.org.uk](http://parkinsons.org.uk) Parkinson's UK is the new name for the Parkinson's Disease Society of the United Kingdom.





# From the East Northants Council Chairman

We joined Rushden Mayor Cllr Kaye Rawlins at the Armed Forces Day band concert on 27th June. This was hosted by the British Legion and featured the Rushden Town Band and Alfred Street Junior School Choir. I had the pleasure of meeting Marion, a local resident who had her 90th birthday that week.

On 2nd July I witnessed my first American Independence Day when we were welcomed by the Commander to RAF Alconbury's Independence Day firework celebrations which was quite an experience.

We were honoured to be invited by the High Sheriff of Northampton to Boughton House for a drinks reception on 3rd July. His guests included other distinguished High Sheriffs, the Earl Spencer and the Duke of Buccleuch.

On 4th July we were invited by the Mayor of St Neots, Cllr Corley, to an Armed Forces Day gala themed boat parade. We and other members of the chain gang were unexpectedly

**On 19th June I had the pleasure of attending the 3rd stage of the Women's Tour, hosted by Oundle (for the second time), which had 100 international cyclists competing in 16 different teams from nine different countries.**

entered into the Best Dressed Mayor contest, which was rightly won by the Mayoress of St Neots. We were then treated to a 28 boat flotilla cruise along the Ouse, where we were spectacularly waved off by thousands of visitors.

I conclude my report with my first Chairman's charity event held on 11th July at the Frontier Centre in Irthlingborough to mark the 75th anniversary of the Battle of Britain.

We captured the atmosphere of a 1940s Victory party and Glenn Miller music drifted out to greet the visitors as they arrived. Some of our guests were even dressed in 1940s clothing.

We raised the roof in tribute to the heroes of the Battle of Britain to much loved wartime songs and well known military anthems played by the excellent

Thrapston Town Brass band, conducted by the musical director Kevin Spencer. The band was supported by the equally gifted classical voice of Tracey Barker and locally based Michelle Randles Dancers.

A tribute to Sir Winston Churchill's 'Their Finest Hour' speech was delivered by Irthlingborough's finest orator, district Councillor John Farrar, and the poem 'High Flight' (written by Spitfire pilot John Gillespie Magee) was eloquently delivered by Susan Stowe.

The Irthlingborough Historic Society put on an excellent exhibition which documented an astonishing £30,000 raised in the Second World War by the residents of Irthlingborough. This money paid for six Spitfires.

We had quite a few dignitaries attending from as far as Grantham. The cracking first prize in the raffle, a limited edition framed picture of a Spitfire signed by the local artist Keith Hill (and also by a Battle of Britain Pilot) was won by a delighted Cllr Isabella Rollings. We were fortunate to have had donated many Battle of Britain themed raffle prizes, which raised £500.

The event was a great success which saw a donation made to the Royal British Legion for £1,000 on

the night. This was presented to the widow of the former Royal British Legion Chairman, Mrs Julie Walker, and Irthlingborough Mayor and present British Legion Chairman Cllr Alan Short.

Presentations were also made to Barbara Wiggins, the East Northants Council Chairman's PA, who was retiring, and a thank you presentation to the volunteers Cllr Caroline Cross, Sue Walker and Paul Hudson who gave up their time to make this sold out event a success.

I want to thank Phil Watts, who was our dedicated photographer for the night, and everyone who supported the event and made the night a memorable one.

*Kindest Regards,  
Cllr Marika Hillson,  
Chairman of East Northants Council*



## Summertime and the parking is free in East Northants

The summer holidays are here, which can be an expensive time for those with children to entertain. But if you're visiting East Northamptonshire, parking is one cost you don't have to worry about.

East Northamptonshire boasts 11 free car parks with generous time allowances, so families can take their time exploring the district.

Steven North, East Northamptonshire Council Leader, says: "We want to encourage families and visitors to enjoy our towns in the summertime without parking costs hitting their pocket. So, whether you're following the HE Bates trail in Rushden or exploring George Washington's ancestry in Thrapston, a parking fee is something you don't have to factor into your day."

Residents and visitors may also be

interested to know that five of our car parks have received the prestigious Park Mark award which is given by the Police to car parks that have achieved the standards of the Safer Parking Scheme. The scheme aims to reduce crime and the fear of crime in car parks.

The Duck Street, John Street, Rectory Road (Orchard Place) and Station Road (Splash Pool) car parks in Rushden and the Sackville Street car park in Thrapston have met strict criteria demonstrating a safe, clean, quality parking environment – an important assurance for many families and visitors.

For more information about car parks in East Northamptonshire visit [www.east-northamptonshire.gov.uk/carparking](http://www.east-northamptonshire.gov.uk/carparking)

• Window sashes • Door frames •

**THRAPSTON GLAZING & JOINERY WORKSHOP**

Est 85

FREE QUOTES

FREE GENUINE ADVICE

**MANUFACTURERS OF HIGH QUALITY TRADITIONAL WINDOWS, DOORS & CONSERVATORIES IN HARDWOODS & SOFTWOODS**

Manufacturers of replica windows, doors & mouldings for the older properties & houses of character.

**WINDOWS • DOORS CONSERVATORIES UPVC and ALUMINIUM GLASS CUT TO SIZE WHILE YOU WAIT**

We have been repairing customers existing windows and doors for over 15 years and this has become more and more popular, we now offer a dedicated, quality repair service with 1000s of spare parts for all makes of windows and doors, including, locks, hinges, handles, glass units, etc.

**SAME INSTALLATION TEAM FOR LAST 25 YEARS.**

*All of this from a small local company offering a combined wealth of experience of over 150 years from our small workforce of six skilled craftsmen in the joinery, wood, aluminium & UPVC window and door industry.*

UNIT 11, COTTINGHAM WAY, THRAPSTON  
**01832 734570** FENSA  
[www.thrapstonwindowsanddoors.co.uk](http://www.thrapstonwindowsanddoors.co.uk)  
• Window sashes • Door frames •

Locks • Hinges • Sliding box sash windows • Composite doors • Burglary repairs • Mouldings • Hardwood Patios • Doors • Burglary repairs • Mouldings • Composite doors

**Pisces**

**Take away and restaurant**

We have achieved 'The best in Northants' as judged by Seafish, the authority on Seafood.

**10% off your total order. Take away and restaurant.**

Come and try the best.  
Offer ends 21st August 2015

Open: Tuesday-Saturday

Come and visit us at  
**21 High Street, Thrapston, Northants NN14 4JJ**  
01832 733303

**Knights Farm**

**PREMIUM OFFICES TO LET**

Just available – desirable offices situated in Rushden, Northamptonshire

- Flexible tenancies – short and long term available
- Competitive terms
- Well situated in rural location
- 24 hour access
- CCTV security with password protected automatic gates
- Free parking
- Close to main transport links

Knights Farm Estates – space to realise your dreams.

Call us now on **01933 357797** or email [farm@geminikarts.co.uk](mailto:farm@geminikarts.co.uk) for a no obligation viewing



# Stanwick WI aids first responders

It was unanimously accepted and agreed upon by all members that a defibrillator would be beneficial, so from then on the fundraising began.

The British Heart Foundation was approached and an application for a part-funded defibrillator was made and accepted. The application also included the supply of a training kit to enable the WI to run local classes on CPR. Cllr Helen Howell said: "As a first responder for the local area, I am all too aware of the benefit of these units and would like to encourage more towns and villages to consider installing one. We will be arranging the training in the coming months and encourage the community to come along and have a go."

During the year members of Stanwick WI have enthusiastically raised funds with various activities, including baking and selling cakes for the local school's Christmas fair and summer fete, raffles and hosting a Fashion Show. One of the WI committee, Teresa Puckle, raised over £300 by abseiling 127m down the inside of the

**Each year Stanwick Women's Institute raises money for an agreed local charity or worthwhile cause. At last year's AGM in October it was suggested by one of their Committee members, Councillor Helen Howell, that funds be raised for a public access defibrillator and external weatherproof case for the village.**

National Lift Tower in Northampton and Chairman Jean Mole contributed £200 from a charity dinner dance.

Northamptonshire County Councillor Dudley Hughes was approached and was able to contribute towards the cost of the defibrillator through his empowerment funding, saying: "I was delighted to be asked to contribute towards this defibrillator for Stanwick, I think the WI and all concerned have done a great job in raising the funds for this project, I just hope it won't be needed!"

The Shop @ Stanwick was seen as the best place to site a defibrillator and, when Vernon, one of the owners, was contacted, it was discovered that they had been collecting for Scott 'Skip' Bradbury, a well-known and loved local village postman, who sadly died of a heart attack last December aged just 40.

Money had been collected by Scott's friends and family and their plan was for a bench in his memory and a defibrillator. Vernon said: "When we were approached by Stanwick WI, it just seemed right that both collections were put together to achieve the best outcome for the village and for Scott. We are really pleased to be part of this fantastic project and to be able to facilitate the siting of the defibrillator. It makes it really special that our community has pulled together to make this happen, and is a fitting tribute to our friend and colleague, Scott".

The bench now has pride of place outside the Shop, with the defibrillator to its side. There is also a commemorative plaque on the wall.

Stanwick WI's Chairman, Jean Mole, and Cllr Helen Howell met with Scott's parents, who were delighted

with the project. Scott's father, Stuart Bradbury said: "It will be the little things you remember about Scott, the laughter and the memories that bring the smiles back again. Scott would have been so proud to see this defibrillator, dedicated in his honour, and given to the people of Stanwick whom he

loved."

The whole project was overseen by Cllr Helen Howell, and the other members of the Stanwick WI committee, Jean Mole, Jacqui Hughes, Teresa Puckle, Tanya Semple, Helena McLean and Liz Watts.

Jean Mole, President of

Stanwick WI said: "I am delighted that all the members of Stanwick WI have contributed to such a worthwhile cause, I want to particularly thank our Committee and members for their fundraising, Cllr Dudley Hughes for his NCC contribution and the owners of the Shop @ Stanwick, Vernon, Steve and Neil, all of whom have been especially helpful in arranging for the installation of the defibrillator cabinet and the wiring of the box at no cost to the overall fund."



Stanwick WI with the village's new defibrillator

# KM

**KM Media & Marketing**  
Your partner in publishing  
ONLINE | IN PRINT | IN DIGITAL



To advertise in  
Nene Valley News call  
**01522 513515**  
**01832 272299**

## WHITEHALL WINDOWS LTD



Supply only or supply and fit service –  
Trade welcome

Windows • Vertical Sliding Windows  
Bi-Fold Doors • Doors – Residential, French  
Doors & Inline-Sliders • Fascias, Soffits &  
Guttering • Decking • Extensions



Call now on our freephone number  
**0800 458 1521**

Office 8, Elm Court, Thrapston, Nr Kettering,  
Northants, NN14 4LG

Tel: 01832 737919

Factory Address: c/o Carr Brothers Ltd,  
Upper Higham Lane, Higham Ferrers,  
Northants NN10 0SU

Tel: 07753 911089

Email: [white\\_hall@uwclub.net](mailto:white_hall@uwclub.net)

Website: [www.whitehallwindowsltd.co.uk](http://www.whitehallwindowsltd.co.uk)



THE BRIDGE HOTEL  
*So much on offer*

**So much on offer**



**Afternoon  
Teas 2 for £12**

**Sunday Lunch  
2 course carvery  
£14.95 per head**



**SUMMER  
RESTAURANT OFFER**

**2 courses for £12.50 per head  
from our restaurant menu.**

Served Monday-Friday 7pm-9.15pm

Terms and conditions apply



Bridge Street, Thrapston, Northamptonshire NN14 4JP  
T: 01832 732128 • E: [info@thebridge-hotel.com](mailto:info@thebridge-hotel.com) • W: [www.thebridge-hotel.com](http://www.thebridge-hotel.com)



### Saturday 1st August

#### Afternoon Tea

60 Station Road,  
Irthlingborough  
2.30pm–5pm  
£3.50  
Tel: Margaret Bull 01933  
651360

Afternoon Tea in the  
garden with Plants and  
Cards for sale, Raffle.

### Flea Market/Bric A Brac Table Top Sale

Wesleyan Church Hall,  
Queen Street, Rushden  
From 10am to 2pm  
With Refreshments,  
homemade cakes, bacon  
rolls, ice cream etc.  
Proceeds to East  
Northants Child  
Contact Services – CIC  
(Community Interest  
Company – Non-profit  
Making).

### 2nd, 9th, 16th, 23rd & 30th August Cream Teas

Parson Latham's Chapel  
Hall, Church Hill, Barnwell  
PE8 5PG  
2pm–4.30pm  
Tel: Mrs Pat Rutterford  
01832 272496  
Enjoy a relaxing afternoon  
in our Chapel Hall &  
Gardens.

### Monday 3rd August Quiz Night

Finedon Bowls Club  
7:30pm  
Admission: £3 pp inc  
cheese and a glass of wine  
Contact: David  
07411337171 to book a  
table  
Teams of 4 or 6. There will  
also be a raffle.

### Saturday 8th August Craft Fair

The Pemberton Centre  
10am–2pm  
Lots of stalls to browse!  
Free Entry! A lovely variety  
of goods from homemade  
gifts to unique products.  
Refreshments available.

### St Laurence Church Fete and Teddy Bear Parachute Jump

From 2pm  
Tel: Peter 01933 623590  
Featuring all the usual

village church fete stalls  
along with other village  
charities, several notable  
national charities and as  
usual the Rushden Mission  
Band. In addition this  
year for the first time we  
are having a barbeque by  
Potters the Butchers and  
a licensed bar. Stanwick  
intrepid teddy bears will  
be taking to the sky for the  
eighteenth year from the  
church tower.

### Acacia Lodge Summer Fete

Bupa Acacia Lodge  
Residential & Nursing  
Home, 15 Wellingborough  
Road, Irthlingborough  
2pm–4pm  
Admission free  
Bouncy Castle, Face  
Painting, Raffle, Tombola,  
Bric-a-Brac, Lucky Dip and  
lots more.

### Oundle Book Fair

Queen Victoria Hall, 7  
West Street, Oundle PE8  
4EJ  
10am–4pm  
Admission: £1  
Tel: Derek Gilbert 01733  
261978, email derekgilbrt@  
btinternet.com  
Wide variety of interesting  
antiquarian and  
secondhand books and  
other printed material  
offered for sale.

### Saturday 8th & Sunday 9th August RHTS Decorated Bicycles & Cycling Festival (No trains)

Rushden Station, Station  
Approach, Rushden,  
Northants NN100AW  
11am–4pm  
Tel: Catherine Young  
01933 353111  
www.rhts.co.uk  
Saturday: Decorated  
Bicycle and Wheelchair  
Parade, Vintage Cycles  
& more. Sunday: Guided  
cycle rides (helmets must  
be worn at all times).

### Sunday 9th August Music in the Park

Rushden Hall Walled  
Garden  
3pm–5pm  
Admission free

Contact information:  
rushdeneventsgroup@  
gmail.com  
Split Whiskers, a blues/  
rock band who play 60s  
and 70s music. Bring own  
seating.

### Monday 10th August Oundle U3A Open Day

Victoria Hall  
2pm–4pm  
Free Entry for Members  
and Non-members  
Tel: 01832 274778  
An opportunity to see what  
the U3A gets up to with  
displays and activities.

### Wednesday 12th August Oundle Strollers

Leave Drill Hall Car Park  
Oundle 6pm  
Walk starts Wadenhoe  
Village Hall Car Park  
6.30pm  
Leader: David Wills 07722  
297097  
5 miles.

### Thursday 13th August Messy Church Plus

St Peter's Church,  
Irthlingborough  
10.30am–12noon  
Free fun, crafts, games  
and picnic lunch. Come  
along and join the fun.  
Everyone welcome.

### Saturday 15th August Messy Church

The Salvation Army,  
Church Street, Rushden  
4pm–5.30pm  
Admission free  
Tel: Gill Valentine 01933  
353528  
One hour and a half of  
games, stories, craft and  
food for all the family.

### Murder Mystery Evening

Rushden Station, Station  
Approach, Rushden,  
Northants NN100AW  
The fun starts at 6pm.  
Tickets: £35 each  
includes meal on the train,  
complimentary drink, quiz  
and prize for the most  
imaginative fancy dress!  
Booking required – online  
at www.rhts.co.uk  
It's 1935 and a tragic event  
has occurred. Question  
the suspects and watch  
the plot unfold.

### Thursdays & Fridays throughout August Oundle Museum Exhibition: 'Oundle 1851'

The Courthouse  
11am–4pm  
History of 1851, Chimney  
Sweeps, the 1950s Steam  
Engine simulation and a  
quiz for the children.

### Every Monday Headway East Northants Craft Club

The Baptist Chapel,  
Meeting Lane,  
Irthlingborough  
1.30pm–3.30pm  
£1 admission  
Tel: Claire Phillips 01933  
652311 E: claire.phillips@  
headwayeastnorthants.  
org.uk  
Informal, friendly group  
making small items for  
fundraising purposes  
(knitting/crochet/cards).  
Materials can be provided.

### Titchmarsh Folk Dance Club

The Club Room, High  
Street, Titchmarsh NN14  
3DF  
8pm–10pm  
£1 inc tea/coffee  
Tel: Julie Bubbles  
01536 726858  
or email bubbles.  
folksinger@hotmail.com  
Country dancing from  
the 1600s to the modern,  
sociable and fun. No  
partner needed.

### Oundle Ladies Running Group

Oundle pool car park  
6.45pm  
Tel: Jane Walker 01832  
272898  
janewalkercakes@icloud.  
com  
All levels welcome. Come  
and give us a try, it's free.

### Wesley Centre Art Class

Irthlingborough Methodist  
Church  
2pm–4pm  
Tel: 01933 650195  
Experienced teacher, all  
abilities welcome.

### First Monday of the month Oundle Wives

Methodist Church, Oundle  
7.45pm  
Tel: 01832 272178  
£3 for refreshments and  
raffle.  
New members very  
welcome. Friendly, social  
group.

### Wildlife Trust Little Bugs Club

Irthlingborough Library  
1.30pm–3pm  
Free, donations welcome  
Tel: Louise Tuffin 01604  
405285  
louise.tuffin@wildlifebcn.  
org  
A fun monthly session for  
Under 5s and their parents  
to discover local wildlife.

### Second Monday of the month Royal British Legion

Rushden Branch Monthly

Meeting  
Rushden Football & Social  
Club, Hayden Road,  
Rushden  
7.15pm  
Annual Fee £15  
Tel: Jake Baker 07525  
441267  
Not necessary to have  
served in the Armed  
Forces to be a member.

### Every Tuesday Coffee Stop Rushden Mission Church,

Wellingborough  
Road NN10 9TA  
10am–12.30pm  
Tel: Alan Richardson 01933  
355302  
A warm welcome awaits  
all, for a drink, snack and  
chat.

### Second Tuesday of the month An Afternoon of Nostalgia Dancing to the Sounds of David Hawkes

Pemberton Centre, HE  
Bates Way, Rushden,  
Northants  
2pm–4pm  
£3 per person plus  
refreshments  
Tel: Diane Eaton  
01933 315555  
Tea dance.

### Higham Ferrers Guided Tour

Groups of 6–24 people  
Trained guides  
Tea and Cakes an  
Optional extra  
Tel: 01933 411191  
Irene Hawkins – Tourism  
Book a guided tour of this  
historic town.

### Second and fourth Tuesday of the month Social group for widows and widowers in their 50s and 60s

Rushden Bowls Club,  
Northampton Road,  
Rushden  
7.30pm–9.30pm  
£1 per meeting  
Tel: Jayne 01933 315030 /  
Rose 01933 315756  
Social group for widows/  
widowers in their 50s and  
60s. Meals out, day trips  
etc.

### Every Tuesday and Thursday Health Walks Stanwick Lakes

10am–11am  
Free – normal car park  
charges apply.  
Tel: 01933 625522  
www.stanwicklakes.org.uk  
Regular walking can help  
improve your health. Join  
us in our regular walks.

### Every Wednesday Dog Training and Socialisation and Ringcraft

Halefield, Woodnewton,  
near Oundle  
Classes from 6.45pm  
Tel: 01832 293432  
oundledogs@aol.com or  
website www.oundledogs.  
co.uk  
Dog training classes  
following the KC Good  
Citizen Scheme and

Ringcraft. New members  
always welcome.

### Rainbow Cafe for Tots

(aimed at up to age 5 and  
their adults)  
Stanwick Lakes  
10.30am–12noon  
£2 per child – normal car  
park charges apply.  
Tel: 01933 625522  
www.stanwicklakes.org.uk  
Make new and exciting  
crafts then join Lisa from  
Music and Movement to  
play, sing and dance.

### Club Night

Apethorpe Tennis Club  
From 6pm  
All standards welcomed.

### Every Wednesday (except school holidays) Allegra Singers – Three- part ladies choir

Music room at King John  
School, Thrapston  
7.30pm–9.30pm  
£3 per session  
Tel: Veronica 01832  
732611 or 07753 472225  
If you enjoy singing, come  
and join us in singing  
modern/show songs. New  
members welcome.

### First Wednesday of the month Raunds Ladies Group

The Saxon Hall, Raunds  
8pm–10pm.  
Visitors £3.50  
Guest speaker,  
refreshments.

### Alternate Wednesdays U3A Country Dancing

St James' Church Hall,  
Thrapston  
2pm–3.30pm  
Tel: 01933 622827  
ghearnden@tiscali.co.uk  
The U3A Country Dance  
Group meets on alternate  
Wednesdays. All are  
welcome. Non-U3A  
members are welcome for  
a taster.

### Second and fourth Wednesdays of the month Northants Model Makers

Windmill Primary School,  
Raunds NN9 6LA  
Main meeting starts  
7.30ish  
First couple of meetings  
free  
Tel: Bob Humpage 07960  
054405 modelmaker@  
tiscali.co.uk  
Social based model  
building club open to  
all ages and levels of  
experience.

### Third Wednesday of each month Wellingborough Flower Arrangement Society

St Mary's Church Hall,  
Knox Road,  
Wellingborough NN8 1HU  
7.30pm  
£5  
Tel: Chairman on 01933  
222326 or Secretary on  
01604 870275  
Car park available.

Continued on page 12







Continued from page 11

### Higham and Rushden U3A

Pemberton Centre, Rushden  
2pm–4pm  
£2 for visitors  
Tel: Membership Secretary 01933 314425  
Monthly speaker followed by beverages and mixing for social chat.

### Every Thursday Rushden Folk Dance Club

St Mary's Church Hall, Rushden  
8pm–10pm  
First visit free, £2 per night thereafter  
Tel: Val 01933 387327  
Everyone will be made welcome, singles or couples.

### The Silverfox Turners Club

Dale End Scout Headquarters, Croyland Road, Wellingborough  
10am–1pm  
£2 all members

Tel: Secretary Trevor Rhodes 01933 382790  
Newly formed wood turning club. Open to all levels of wood turners. Warm welcome guaranteed.

### Free guided walk around Oundle

Oundle  
11am  
Admission free  
Email: [oundlib@northamptonshire.gov.uk](mailto:oundlib@northamptonshire.gov.uk) or call 0300 126 1000  
Explore Oundle on foot. Walks last 60–90 minutes. Booking essential.

### Every Thursday during school term time Music Makers

Titchmarsh Pavilion  
9.30am–10.15am  
£4 per child and £2 per sibling.  
Naomi Cooper on [musicmakersnorthants@gmail.com](mailto:musicmakersnorthants@gmail.com)  
Funky music and movement group for 0–5 years with parachute, puppets, balls, bubbles and more.

### Music Makers

Joan Strong Centre, Oundle  
11.15am–12noon  
£4 per child and £2 per sibling.  
Naomi Cooper on [musicmakersnorthants@gmail.com](mailto:musicmakersnorthants@gmail.com)  
Funky music and movement group for 0–5 years with parachute, puppets, balls, bubbles and more.

### Little Treasures Tots Group

St Laurence's Church, Stanwick  
9.30am–11am  
Donations to cover costs  
Tel: Nicki 01933 625658  
For pre-schoolchildren and their adult carer – Bible story, song, craft and fun. All welcome.

### Music Makers

Stanwick Village Hall  
2pm–2.45pm  
£4 per child and £2 per sibling  
Naomi Cooper on [musicmakersnorthants@gmail.com](mailto:musicmakersnorthants@gmail.com)  
Funky music and movement group for 0–5 years with parachute, balls, bubbles and more. FREE taster sessions up for grabs.

### Third Thursday of the month Painting Class with Nick Baldwin

St John Ambulance Hall, Raunds  
10am–4pm  
£15 per session  
Tel: Kathy Gyngell 01933 389936  
Friendly class seeks new members to learn painting with mixed media. All abilities welcome.

### Every Friday 'Tea + Tots' Little Ducklings Pre-School, Barnwell

1.30pm–3pm  
£1.50 per family  
Tel: 01832 358085  
Come and enjoy a nice relaxing cup of tea whilst watching your children play.

### First Friday of the month (recommend checking before travelling) Craft Cafe Stanwick Lakes

10.30am–1pm  
Modest charges for some materials – normal car park charges apply.  
Tel: 01933 625522  
[www.stanwicklakes.org.uk](http://www.stanwicklakes.org.uk)  
Learn new craft skills, share your experience and meet up with crafty friends.

### Third Friday of the month Raunds Tea Dance

Saxon Hall, Raunds  
2pm–4.15pm  
£3 (plus 50p for Raffle)  
Tel: Mrs Wicks 01933 312623  
Tea dance and raffle with music by Dave Hawkes.

### Third Friday of the month (recommend checking before travelling) Stanwick Stitchers

Stanwick Lakes  
10.30am  
Free entry – normal car park charges apply.  
Tel: 01933 625522 or Pauline on 01933 229817  
[www.stanwicklakes.org.uk](http://www.stanwicklakes.org.uk)  
Come and join this informal friendly group of stitchers to chat, stitch and eat cake!

### First Saturday of the month Coffee Morning

St Mary's Church, Ringstead  
10am–12noon  
Tel: 01933 624262 for details  
A warm welcome to all, proceeds to church projects and charities.

### Thrapston Farmers' Market

Thrapston High Street  
9am–1pm  
Free  
[www.thrapstonfarmersmarket.moonfruit.com](http://www.thrapstonfarmersmarket.moonfruit.com)  
Every first Saturday of the month. Local meat, beer, cider, cheese, eggs, deli, preserves etc.

### Second Saturday of the month (Same Saturday as Oundle Farmers' Market) Coffee 'n' Cakes

Oundle Methodist Church, Drummingwell Lane (behind the Talbot Hotel)  
10am–12noon  
Tel: John Hewitson 01832 272209  
Filter coffee, tea, squash (free refills) homemade cakes. Warm welcome. Proceeds to various charities.

### Second Saturday of the month WE Watch and Phoenix Group

Stanwick Lakes  
For more information email [wewatchstanwick@hotmail.co.uk](mailto:wewatchstanwick@hotmail.co.uk)  
Tel: 01933 625522  
Two clubs for keen young nature lovers. WE Watch for ages 8–13 and Phoenix for ages 13–18. Supported by RSPB and Wildlife Trust.

### Every third Saturday of the month Messy Church

Rushden Salvation Army, Church Street, Rushden  
4pm  
Further details from Gill Valentine on 01933 353528  
Messy Church – fun for all the family.

### Last Saturday of the month except December Farmers' Market

Market Square, Higham Ferrers  
9am–1pm  
[danielle@highamferrers-tc.gov.uk](mailto:danielle@highamferrers-tc.gov.uk)  
Aberdeen Angus beef, organic eggs, vegetables, Italian peppers, organic pork and lamb, free range poultry, beer, pork in all its forms in addition to pickles, pies, herbs, fresh fish, fruit and honey, preserves, traditional bread, plants & cheese.

### Every Sunday Morning Worship Rushden Mission Church

Wellingborough Road  
10.45am  
Tel: Alan 01933 355302  
All age family service with the Music Group and children's activities.

### Morning Church Service

The Cafe Church, The Heritage Chapel and Halls, Park Rd, Rushden NN100RG  
10.30am  
Church service followed by refreshments and fellowship.

### Every Sunday (19th July–20th September) Afternoon Teas

King's Cliffe Village Hall (Pedestrian access via Eagle Lane off West Street; vehicle access via Orchard Lane and Church Walk at west end of the village. Parking at rear of hall.)  
Open 2pm–4.30pm  
Pots of tea or coffee, homemade cakes and scones. Sale of homemade preserves and Secondhand Book Corner.

### First Sunday of the month Priceless – for young children and their families

St Laurence's Church, Stanwick  
9.30am–10.15am  
Join Tanya and Nicki for 45 minutes of fun, craft and prayer.

### Third Sunday of the month All Age Worship St Laurence's Church, Stanwick

9.30am  
Join us for our All Age Worship designed for people of all ages. Teas/coffees served after the service.

### Leisurely, Sociable Strolls

Pub start – if not lunching please do not use pub car park  
10am for 10.30am prompt start.  
Guests £2 or join for the year £8  
[secretary@northamptonshireshamblers.org.uk](mailto:secretary@northamptonshireshamblers.org.uk)  
Circular walks enjoying our beautiful countryside. A week's notice to secretary please if wanting lunch.

### Last Sunday of the month (recommend checking before travelling) Local Producers' and Farmers' Market

Stanwick Lakes  
10am–2pm  
Free entry to market – normal car park charges apply.  
Tel: 01933 625522  
[www.stanwicklakes.org.uk](http://www.stanwicklakes.org.uk)  
Browse through tempting treats and gifts made and farmed by local businesses.

### Every Sunday during July, August and September Sunday teas

Fotheringhay Village Hall  
3pm–5.30pm  
Tea or coffee and cake  
£2.50  
Tel: 07713 654385

### Every Sunday in June, July and August House, Museum and Exhibition open

The Priests House, 38 West Street, Easton on the Hill, near Stamford, Northamptonshire PE9 3LS  
2pm–4.30pm  
Free. Donations welcome.  
Contact: Paul Way 01780 762619 email: [paulway39@hotmail.com](mailto:paulway39@hotmail.com)  
A delightful small 15th century building with a museum exploring Easton's industrial past including the local Collyweston slate mining industry which ended in the 1950s.

### Ongoing Drawing and Painting Classes

Ecton Village Hall, Chelveston Village Hall, Warkton Village Hall, Kingsthorpe Community Centre  
Various (see my website) [dgartweb.sharepoint.com](http://dgartweb.sharepoint.com)  
£65 per term  
Tel: Derek Geater 01933 381848  
Drawing and painting, mainly working in watercolour with some soft pastels.

**More events can be found at**  
**[www.nenevalleynews.co.uk](http://www.nenevalleynews.co.uk)**

To submit your event please contact us via our website in the following format: Date, event, place, time, admission fee (if applicable), contact information, 15 word description.





# Welly 5 race report

On Sunday 26th July, the Wellingborough and District Athletics Club (W&DAC) held its annual 5 mile road race, the Wellingborough 5. A fantastic number of runners braved the rain for a great morning of running which saw a lot of new personal bests for the club!

A huge well done to all of the runners on the day. As always, it was great to see so many families taking part with a Toddler Dash and 1 Mile Fun Run on offer for the younger runners.

The cold and wet conditions meant the tea and cake stall went down a storm with over £250 raised for the team's charity, Cransley Hospice. Thank you to everyone for your donations.

Want to get involved? As a club, we are always looking for new members and welcome runners of all ages and abilities. No matter what your aims or goals are, whether it is for keeping fit, losing weight, joining in our social groups or running to be competitive, we can help! Training sessions are held on Tuesday and Thursday nights at 6.30 at Wrenn School, Doddington Road, Wellingborough, NN8 2JJ. For more information, please visit our website [www.wdac.org.uk](http://www.wdac.org.uk)

Pos	Name	Time	Cat	
14	Richard Loader	00:28:39	SM	
23	Edward Frain	00:29:33	SM	PB
24	Keith Molloy	00:29:34	M40	PB
29	Jon Kemp	00:30:08	M40	
33	Anthony Saynor	00:30:25	SM	PB
38	Craig Shackleton	00:31:12	SM	PB
40	Kelly Barnett	00:31:17	SF	
44	Dariusz Gertchen	00:31:39	M40	PB
45	Nicholas Sinnott	00:31:46	M40	PB
46	Ben Shirley	00:31:53	SM	PB
47	Jason French	00:32:00	SM	PB
50	Mike Gooch	00:32:06	M40	PB
53	Andrew Redden	00:32:26	SM	
54	Lisa Smith	00:32:34	SF	PB
58	Roger Bullen	00:32:51	M50	
62	Josh Coulson	00:33:02	SM	
63	Michael Quinn	00:33:03	M50	PB
64	Neil McDonald	00:33:11	M50	
68	Henry Griffiths	00:33:20	SM	
69	Alan Griffiths	00:33:24	M40	
71	Steve Kearns	00:33:35	SM	PB
96	Sarah Ellwood	00:35:19	F35	
105	Mike Farrow	00:36:07	M50	
111	Niteen Sawant	00:36:30	M40	
117	Kelly Wedge	00:36:47	F35	PB
129	Stuart Humphrey	00:37:39	M40	PB
128	Simon Callow	00:37:43	M40	PB
143	Kim Geeves	00:38:20	SF	PB
186	Jill Shinnick	00:42:42	F35	PB
189	Sarah Scanlon	00:43:04	F35	PB
206	Amos Hill	00:44:27	M40	
213	Sally Hewitt	00:46:37	F55	
229	Peter Bardell	00:49:40	M40	PB
242	Joanna Bates	00:53:30	SF	PB
250	Katy Pengilley	00:57:07	SF	PB
256	Zoe White	01:01:39		



## Busy first day for new Chief Constable Simon Edens

Northamptonshire's new Chief Constable, Simon Edens, joined the force's latest recruits as they were sworn in as special constables.

Mr Edens and the six volunteer police officers took their attestation before Justice of the Peace, Steven Marsh, at a ceremony held at the police headquarters in Northampton.

The attestation was the culmination of Mr Edens' busy first day with Northamptonshire Police, which he spent out and about meeting officers and staff across the county.

Mr Edens began the day with colleagues at Kettering for an early shift briefing, before going to Oundle to meet officers working as part of the Futures Programme.

Following a visit to the 'pop-up' community shop in Oundle town centre, where officers were spending the day meeting local people and finding out about local issues and priorities, he went on to meet colleagues at Wellingborough and Weston Favell police stations.

He said: "I have very much enjoyed my first day with Northamptonshire Police, meeting many officers and staff as well as members of the public.

"In Oundle, I met with officers working on

the Futures Programme, which is finding new and innovative ways to deliver policing services.

"I saw with the pop-up shop that it gives people who live, work and travel through the area, the opportunity to speak with us and tell us what their priorities are, so we can find ways to address those priorities and keep people safe, not necessarily on our own but with partners and the community too.

"Then yesterday evening, I took the attestation with a number of special constables, taking the oath myself. I think it was important to renew my vows so to speak and to be able to do that alongside new colleagues in the special constabulary was something I dearly wanted to do."

Mr Edens emphasised that his main purpose, and those of his fellow officers and staff, was to protect people from harm and keep communities safe.

"For me, that core purpose, protecting people from harm is at the heart of what I do, at the heart of what policing does. I think the ambition of creating the safest county in England is an extremely exciting, exhilarating and indeed motivating ambition and it's one that we're committed to and one that we will pursue."

Let us design  
your perfect carpet

Bespoke carpets at High Street prices



**OUNDLE CARPET WEAVERS**  
Manufacturers of Fine Carpets

**100% wool Naturals**  
**Heavy Domestic**  
**4 & 5 metre widths**  
**12 Natural Colours**  
**ONLY**  
**£15 per sq metre**

**Don't forget we  
sell beds and  
mattresses**

**WHERE TO FIND US** Units 4/6  
Eastwood Road, Oundle PE8 4DF  
T. 01832 275009

**OPENING TIMES** Monday to Saturday  
8.30am-5.30pm or please  
book an appointment  
[www.oundlecarpetweavers.com](http://www.oundlecarpetweavers.com)  
[ocweavers@gmail.com](mailto:ocweavers@gmail.com)



# Classifieds

Deadlines for all classifications: 5pm Monday prior to issue date. A complete version of our Terms and Conditions can be found online at [www.nenevalleynews.co.uk](http://www.nenevalleynews.co.uk). Pay by credit/debit card or cheque. All major credit/debit cards accepted.

## Family notices

Nene Valley News can help you make those important family announcements.



**Walker, Aaron/  
Hunt, Nicola**  
Married on April 2 2014,  
at St Andrews Church.  
The couple had their  
honeymoon in Paris.

Happy 1st  
birthday



Chloe Booth have a  
wonderful day.  
Love from Mummy, Daddy,  
Nanna & Grandad xxx

**Chloe Booth**  
On April 2nd, 2014,  
Chloe Booth passed away peacefully  
surrounded by loved ones.  
Sadly missed by Jane, Ian,  
Sally and Alan. Funeral  
to take place at All Saints'  
Church, Rushden, on  
Monday April 7 at 2.30pm.

### BIRTHS

### ENGAGEMENTS

### MARRIAGES

### ANNIVERSARIES

### BIRTHDAYS

### DEATH NOTICES

### IN MEMORIAM

### THANKS

For help and information to place your notice please call  
**01522 513515/01832 272299** or  
visit [www.nenevalleynews.co.uk](http://www.nenevalleynews.co.uk)



**KM Media & Marketing**  
Your partner in publishing  
ONLINE | IN PRINT | IN DIGITAL

To advertise in  
Nene Valley News call  
**01522 513515**  
**01832 272299**



### ACCOUNTANCY

**Jon Essam & Co Ltd**  
Chartered Accountants

- Self Assessment Tax Returns
- Limited Company services
- VAT & CIS Returns
- New Business Start Ups and advice
- Payroll & Auto-enrolment services
- Sage & Xero specialists
- Free initial consultation

Tel: **01832 730280** Fax: **01832 730281**  
info@essamca.co.uk [www.essamca.co.uk](http://www.essamca.co.uk)

23 Cottingham Way, Thrapston,  
Kettering, Northants, NN14 4PL



### CARE HOMES

*Rose Cottage Residential  
Care Home Woodford*

We are a small care home with eight residents only.  
All rooms are single en-suite and ground floor.  
We provide respite care and day care.  
Telephone **01832 735417**  
[www.rosecottagewoodford.co.uk](http://www.rosecottagewoodford.co.uk)

Follow us on Facebook



### CHIMNEY SWEEPS



CERTIFIED CHIMNEY SWEEP  
FULLY INSURED, SERVICE CERTIFICATE ISSUED.

We feel the need, the need to sweep

★ **01536 523511** ★

[www.topsweep-kettering.co.uk](http://www.topsweep-kettering.co.uk)



### GARDENING

**SCS Gardening Services**

All work undertaken  
Hedge cutting  
General tidying  
Regular grass cutting

**01933 316 212**



### HOME IMPROVEMENTS



Free quotes and advice  
**07415 508 306** or **01933 623212**  
jjcoloughlin@gmail.com



No job too small, all trades covered  
We carry out new builds, extensions,  
refurbishments, alterations & any  
home improvements required.

1 Spinney Rise, Denford, Kettering NN14 4AR  
Email: [ian.polson@btinternet.com](mailto:ian.polson@btinternet.com) • Mobile: 07970 760 349

[www.denfordconstruction.co.uk](http://www.denfordconstruction.co.uk)



**Kitchen Door Solutions**  
Replacement doors and kitchen refurbishment  
Doors available in solid wood, painted and laminate finishes



**Iain Smith**  
Tel: **01933 311310** SPECIALISTS  
Mob: **07583 869741** SINCE 1980

### CONSERVATORIES

EG VICTORIAN 3500 BY 3500  
FULLY INSTALLED INCLUDING  
ALL BRICKWORK AND VAT

**£7250**

ALL OTHER DESIGNS AND SIZES AVAILABLE  
UNBEATABLE PRICES  
PHONE NICK ALLINGTON ON  
(01832) 734070  
[WWW.CONSERVATORIESBUILT.CO.UK](http://WWW.CONSERVATORIESBUILT.CO.UK)

### Debbie Dawson & Son Interior Painters and Decorators

• Free estimates • Over 15 years experience  
Tel: **01832 274652** Mobile: **07779 393458**

**10% OAP DISCOUNT**

### Kevin Neil Chambers

RE-BEAD & SMOOTH CEILINGS  
PLASTERING - COVING - PATIOS  
GARDEN WALLS - FENCING - BLOCK PAVING  
**NO JOB TOO SMALL**  
01832 731087 OR 07713 890754  
RELIABLE, CLEAN AND FRIENDLY SERVICE  
[kevinchambers07@btinternet.com](mailto:kevinchambers07@btinternet.com)



**Andrew Porter BSc. (Hons)**  
Architectural Consultant

PLANS DRAWN FOR PLANNING &  
BUILDING REGULATION APPROVAL

Telephone: **01933 626 183** Mobile: **07544 207218**  
e-mail: [andrewporter282@btinternet.com](mailto:andrewporter282@btinternet.com)



### HOME SERVICES





**Plumber Local & Fast!****Plumbing**Leaks & bursts • Oillets & taps  
Pumps & valves • Cylinders & sinks**Bathrooms**Design & build • Supply & fitting  
Carpentry & tiling  
+ heating systems

- No call-out charge!
- City & Guilds Qualified
- All work guaranteed

01933 450004 or 07921 469471

**HANDY HERBERTS**  
Home & Garden MaintenanceAll garden and exterior  
maintenance work undertaken  
including professional gutter cleaning,  
graveling, fencing and external painting.01933 563365 or 07725 225214  
[handyherberts@yahoo.co.uk](mailto:handyherberts@yahoo.co.uk)**DC Heating**  
SAFE IN OUR HANDSYOUR LOCAL PROFESSIONAL  
HEATING AND PLUMBING  
ENGINEERS YOU CAN TRUST

REPAIRS • SERVICING • INSTALLATIONS



Phone today for a free quotation on

**Tel: 01933 392 719**[www.dcheatingengineers.co.uk](http://www.dcheatingengineers.co.uk)**LADY TILER**

WALLS AND FLOORS

Friendly advice. No job too big or too small.  
Please contact Karen**Tel: 01933 461295 / 07975 752580****Victoria's Cleaning Services**One off cleans  
General weekly cleans  
Ironing services  
Competitive prices

07731 860581

[bokkie87@hotmail.com](mailto:bokkie87@hotmail.com)**DONNO R G**  
TV/AERIAL SERVICES

Est 1981

TV/DVD repairs, servicing at your home if possible  
Full installation service available.  
Freesat and Freeview digital aerials supplied and  
installed from £80. All work guaranteed.  
No call out charge locally. Free estimates on repairs.**Tel: 01933 356680****A. SEATON**  
ELECTRICAL LTD

- Rewires, fuse board replacements
- Fault finding, extra sockets & lights
- Testing, inspection & certification
- No job too small, free estimates given

Email: [seatonsparky@gmail.com](mailto:seatonsparky@gmail.com)  
T: 01933 778504 M: 07952 249885**Why clean my  
wheelie bin?**Your wheelie bin can  
become a breeding  
ground for HARMFUL  
GERMS and BACTERIA  
which can lead to  
maggots, flies and  
other UNWANTED  
PESTS and some  
UNPLEASANT SMELLS!!!Residential and Commercial Wheelie Bin Cleaning Service  
Prices from £3.75 per month**07950877137 / 01933 382882**[www.reallywheelieclean.co.uk](http://www.reallywheelieclean.co.uk)  
[info@reallywheelieclean.co.uk](mailto:info@reallywheelieclean.co.uk)**Easyflow Plumbing**

Plumbing &amp; Heating Services

Bathroom Installations  
Heating Systems  
General Household PlumbingTel: 07840 254 025 or 01832 730 798  
[roberttradford77@gmail.com](mailto:roberttradford77@gmail.com)**POSITIVE ELECTRICAL  
& PLUMBING SERVICES**PART P APPROVED ELECTRICAL CONTRACTOR  
RELIABLE & PROFESSIONAL  
NEW BUILDS, EXTENSIONS, REWIRES  
FUSE BOARD UPGRADES, SHOWERS & MORE  
ALSO FIRE ALARMS & EMERGENCY LIGHTING  
FOR A QUOTE OR ADVICE, CONTACT PAUL ON:

OFFICE: 01832 732881

MOBILE: 07939 088246

OR EMAIL: [postve@hotmail.com](mailto:postve@hotmail.com)**CLARK COAL SUPPLIES**DELIVERED FREE TO RUSHDEN, HIGHAM FERRERS  
AND SURROUNDING VILLAGESMINIMUM DELIVERY 5 BAGS  
CASH ON DELIVERY**TELEPHONE 01933 314742****ENSIGN GAS ENGINEERS****GAS FIRES, GAS COOKERS  
INSTALLATION, SERVICE AND REPAIR**Recommended service agent for:  
Focal Point Fires, Superior Fires and Eco Fires**NO CALL OUT CHARGE****Tel: 01933 318327**

165893



IT

Thrapston's Only Computer Repair Shop

**Thrapston Computer  
Repair Service**

Helping you and your tech get along

SET UP  
SUPPORT  
SERVICING  
REPAIRS**Computers & Gadgets**

We support home and business users

9 High Street, Islip NN14 3JS

01832 238037

[www.thrapstonIT.com](http://www.thrapstonIT.com)**PET SERVICES**

Services include:

- Doggy Day Care
- Dog Walking
- Puppy Visits
- Pet Sitting
- Cat Visits
- Home Boarding

Contact Sarah on:

07766 523292

[www.ccpetservices.co.uk](http://www.ccpetservices.co.uk)[sarah@ccpetservices.co.uk](mailto:sarah@ccpetservices.co.uk)**REMOVALS****David Mallett**

REMOVAL, STORAGE &amp; GENERAL HAULAGE

**HOME AND ABROAD**For a **FREE** quotation call**Mob: 0788 996 8064****Tel: 01832 731570**

Local Friendly Service

**PUBLIC NOTICES****GOODS VEHICLE OPERATOR'S LICENSE**Fairline Boats Ltd of Nene Valley Business Park, Oundle PE8 4HN is  
applying to change an existing licence as follows:To add an operating centre to keep 1 goods vehicle and 0 trailers at Nene  
Valley Business Park, Oundle PE8 4HN.Owners or occupiers of land (including buildings) near the operating  
centre(s) who believe that their use or enjoyment of that land would be  
affected, should make written representations to the Traffic Commissioner  
at Hillcrest House, 386 Harehills Lane, Leeds, LS9 6NF, stating their  
reasons, within 21 days of this notice. Representors must at the same time  
send a copy of their representations to the applicant at the address given at  
the top of this notice. A Guide to Making Representations is available from  
the Traffic Commissioner's Office.**NORTHAMPTONSHIRE COUNTY COUNCIL****ROAD TRAFFIC REGULATION ACT 1984****THE NORTHAMPTONSHIRE COUNTY COUNCIL  
(VARIOUS BYWAYS, EAST  
NORTHAMPTONSHIRE DISTRICT)  
(PROHIBITION OF VEHICLES) ORDER 2015**NOTICE IS HEREBY GIVEN that Northamptonshire County  
Council intend to make an Order under Sections 1 to 5 of the Road  
Traffic Regulation Act 1984. The general effect of the Order will be to  
prohibit any motor vehicle (except two wheeled motor vehicles) or horse  
drawn vehicle from proceeding along those lengths of Byways as  
specified in the schedule below from 1st October to 31st December  
inclusive each year and from 1st January to 30th April inclusive each  
year.**REASON FOR RESTRICTION:** This Order is required to reduce  
damage to the said lengths of Byways during the winter months. Vehicles  
proceeding to or from any premises, property or land which is situated on  
or adjacent to the said lengths of Byways will be exempt from the Order.A COPY of the proposed Order, together with plans showing the exact  
lengths of Byways to which it relates and a statement of the Council's  
reasons for proposing to make the Order, may be inspected at Oundle  
Library, Glapthorn Road, Oundle or Thrapston Library, High Street,  
Thrapston during their normal opening hours or at the offices of the  
Traffic Orders Section, Riverside House, Bedford Road, Northampton  
during normal office hours.**OBJECTIONS** to the proposed Order, stating the grounds on which  
they are made should be sent in writing to the Traffic Orders Section,  
Riverside House, Bedford Road, Northampton NN1 5NX by 22nd  
August 2015.

Dated this 1st day of August 2015.

**QUENTIN BAKER,**  
Director of LGSS Law  
DSW/1524**SCHEDULE****Byway MC17 Aldwinckle**Byway MC17 beginning off Northampton Way at National Grid  
Reference ("NGR") TL 0001 8332, travelling south-west for  
approximately 2720 metres to NGR SP 9886 8094 at Lowick Road.**Byway MG24 Benefield**Byway MG24 beginning off Stocks Hill at NGR SP 9955 8789, travelling  
south for approximately 994 metres to NGR SP 9970 8692 at Harley  
Way.**Byways MN8 Clopton, MF15 Barnwell, NY13 Thurning  
and NK2 Luddington**Byway MN8 beginning off Gibbets Lane at NGR TL 0820 8061,  
travelling north-east to NGR TL 0837 8068, continuing as Byway MF15  
to NGR TL 0862 8080, continuing as Byway NY13 to NGR TL 0907  
8126, and continuing as Byway NK2 to NGR TL 0959 8163 at Winwick  
Road.**Byway NB27 Harringworth**Byway NB27 beginning off Wakerley Road at NGR SP 9323 9793,  
travelling north-west for approximately 707 metres to NGR SP 9280  
9849 at the County Boundary with Rutland.**Byways NM32, NM40 Nassington and PG14 Yarwell**Byway NM40 beginning off Sulchey Road at NGR TL 0539 9802,  
travelling south to NGR TL 0537 9763, and continuing as Byway PG14  
to NGR TL 0529 9729, and continuing as Byway NM32 to NGR TL 0508  
9669 at Apethorpe Road.**Byway NN9 Pilton**Byway NN9 beginning at NGR SP 9950 8673, travelling south-east for  
approximately 868 metres to NGR SP 9980 8592 at Bear Shank Wood  
Road.**Byways NV9 Tansor and ME9 Ashton**Byway NV9 beginning off Luton Road at NGR TL 0689 8984, travelling  
south-west to NGR TL 0666 8942, and continuing as Byway ME9 to  
NGR TL 0646 8890.**Byway NZ19 Titchmarsh**Byway NZ19 beginning off Warren Lane at NGR TL 0654 7804,  
travelling south-west for approximately 484 metres to NGR TL 0630  
7762 at Warren Lane and the county boundary.**Byways PF12 Woodnewton and NM34 Nassington**Byway PF12 beginning off Nassington Road at NGR TL 0554 9506,  
travelling north to NGR TL 0520 9570, and continuing as Byway NM34  
to NGR TL 0508 9667 at Apethorpe Road.**Byways PG15 Yarwell and NM33 Nassington**Byway PG15 beginning off Nassington Road at NGR TL 0676 9735,  
travelling south-west to NGR TL 0659 9716, and continuing as Byway  
NM33 to NGR TL 0623 9673 at Northfield Lane.**JOBS BOARD****Agents required to organise the  
distribution of Nene Valley News**Part-time self-employed agents required for Rushden  
& Higham Ferrers to organise the distribution and  
deliver the newspaper and associated leaflets to the  
distributors on a Friday afternoon fortnightly.Duties will include a small amount of admin  
so must be reasonably computer literate.  
Car and telephone essential.Please email or call [Christine.charlton@whistl.co.uk](mailto:Christine.charlton@whistl.co.uk)  
07933 484154 01933 626229**Inn Farm Private Day Nursery**

is looking to recruit two level 3

qualified nursery nurses to join our

'outstanding' nursery (OFSTED 2014).

You must be familiar with all aspects of  
a busy day nursery and an enthusiastic  
team member. We are located 5 miles  
from Rushden in a rural location.Please call **Joanne** on **07961 291058** for  
an initial discussion or please email your  
CV to [kate@innfarmdaynursery.co.uk](mailto:kate@innfarmdaynursery.co.uk)**Oundle  
Town  
Council****'Oundle Town Council's vision for  
Oundle is that it remains a beautiful  
thriving market town renowned for  
being a fantastic place to live, work  
and a joy to visit.'**Three vacancies exist for Caretakers to work at  
The Courthouse and Fletton House, the new  
community building in Oundle refurbished by  
Oundle Town Council and due to open on 1st  
September 2015.Under the overall direction of the Town  
Clerk, the Caretakers shall be responsible  
for helping to deliver the Council's vision  
through effectively and efficiently caretaking  
the Council's public buildings to ensure the  
buildings are well presented, maintained  
and secure.The hours of work will be from 6am to 8am at  
Fletton House, to include opening the  
building, plus half an hour per evening to lock  
up, plus 8.30am to 9am at The Courthouse.Work patterns to be agreed with successful  
candidates.The hourly rate of pay is £7.21 per hour (SCP8),  
with the opportunity to participate in the  
Local Government pension scheme.If you are interested in this position,  
please contact us on 01832 272055 or visit  
[www.oundle.gov.uk](http://www.oundle.gov.uk) or [www.oundle.info](http://www.oundle.info) or  
call in at The Courthouse to obtain a Job  
Description and Person Specification.  
Applications should be made in writing  
and received by 17 August 2015.*Oundle Town Council operates an Equal Opportunities  
Policy and all applicants will be given equal opportunities  
in employment regardless of gender, age, race, disabilities,  
caring responsibilities, ethnic origin, sexual orientation,  
religious beliefs and / or trade union membership.***RELIEF MATRONS****£10.61 ph — term time only**

Role 1: 8 hours in house Thursdays

Role 2: 9 hours in house Wednesdays

Both roles include standby occasions

**Closing date: 24/08/2015****First interviews: w/c 31/08/2015****POT WASH ASSISTANT****£11,729 pa — 36.4 working weeks**

80 hours over a two week rota

**Closing date: 07/08/2015****Interview date: 11/08/2015****CHEF****£17,302 pa — 36.4 working weeks**

80 hours over a two week rota

**Closing date: 07/08/2015****Interview date: 11/08/2015**

To apply visit:

**[www.oundleschool.org.uk/  
employment-opportunities](http://www.oundleschool.org.uk/employment-opportunities)***The School is committed to safeguarding and promoting the welfare of  
children and young people and expects all staff and volunteers to share  
this commitment. The successful applicant will be required to undergo  
child protection screening appropriate to the post including checks with  
past employers and the Disclosure and Barring Service.*



# Chess corner

In the centre of Riga, the capital city of Latvia, there is a building called the Tal Residence with luxurious apartments in an upmarket area of the city. This building was designed by a talented architect called Ingurds Lazdins. It would appear that Lazdins is a chess enthusiast from the way this impressive building has been designed and decorated.

Chess motifs adorn the façade of the building with the geometry of the bay windows representing chess figures of different heights. A combination of light and dark toned glass in the windows symbolise chess boards.

The whole building is a tribute to the genius that was Mikhail Tal; a chess superstar from the Soviet era. Monolithic pillars on the first floor reaching high and skyward represent Tal holding up the Champion Cup. The building which is affectionately known as the 'Tal Palace' has recently hosted a series of six games between former world champion Anatoly Karpov and Latvian Grandmaster Evgeny Sveshnikov. Karpov won three games, drew two and lost one, showing that he's still a formidable force at the age of 64.

So who was Mikhail Tal and why was he considered deserving of

having a prestigious building designed in his honour? Tal was born in Riga in 1936 and learned to play chess at the age of eight. At the age of 11 he joined the Riga Palace of Young Pioneers chess club and was coached by Latvian chess master Alexander Koblencs when he was 13. Tal improved rapidly under Koblencs's instruction, qualifying for the Latvian Championship at the age of 15 and becoming the Latvian Champion two years later. He won the USSR Chess Championship final at the age of 20 but did not become a Grandmaster, as he had not played in enough international tournaments. This changed the following year when FIDE (the ruling body of chess) decided to waive the normal restrictions and make him a Grandmaster.

Mikhail had a very distinctive style of chess and has been called the best attacking player of all time; his game was noted for improvisation and unpredictability leading to him becoming known as The Magician from Riga. In



By  
**Derrick Sims**

1959 he played the talented American, Bobby Fischer, and beat him in all four games. The following year at the age of 23 Tal became the youngest-ever world champion by beating Mikhail Botvinnik 12½ - 8½.

Tal suffered from poor health as a result of smoking and drinking and died in 1992 at the age of 55. He still retains the records for both the first and second longest unbeaten runs in competitive chess history. He is rightly regarded by many as a genius.

Chess is a game for people of all abilities, disabilities, and lifestyles. Rushden Chess Club loves welcoming new members, so do come along to a meeting if you're interested in playing chess in a very friendly environment. The club opens most Mondays from 6pm for Junior players – for details please call the Club Secretary on 07810 474969, or visit the club website <http://rushdenchessclub.com> and for the NCA (County Association) it's <http://www.norchess.lloydbunday.co.uk>.

## Student organises football fundraising event for the Teenage Cancer Trust

Adam Fernley, 14, set about organising a day full of inter-year football tournaments for students on Monday 20th July. The team sign-up sheets were soon filled up, with an amazing nine teams submitting themselves from Years 7 and 8. Supported by fellow classmates and members of the school's Sparks leadership team, Adam oversaw proceedings and awarded medals and a trophy to the winning team in each tournament.

At the end of the school day a staff versus students match took place, complete with singing the national anthem before kick-off. The game lasted 70 minutes and saw some spectacular shots at goal, sliding tackles and many shouts of encouragement from the sidelines. Not one to shy away from the action, the Principal, Mrs Brooks, also took part and was more than happy to face the student opposition. The final score was 3-1 to the staff following goals from maths teacher Mr Essam and PE and science teacher Mr Somers.

Students donated £1 to either

**Staff and students from Manor School, Raunds, have rallied behind a Year 9 student who organised a day of football in order to raise money for the Teenage Cancer Trust.**

participate in the football tournaments or wear non-uniform for the day, which built on the earlier fundraising by Adam and his friends who sold wristbands and tickets for a prize draw during the week before the event. Staff also contributed in a closed auction for a bottle of wine signed by the Prime Minister. The total raised by the school for the Teenage Cancer Trust was £863.

Principal Linda Brooks commented: "Adam organised an excellent day of sporting activity to raise money for such a worthy cause. I am delighted that his efforts have been rewarded with a significant amount of money being raised to support the Teenage Cancer Trust."

## TRADELL

Drafts & damp?  
Don't suffer in  
silence, **you can**  
make your home  
**cosy, warm & secure!**

"Thank you for such a beautiful conservatory, we are totally thrilled"

"May we take this opportunity to thank you for your kind attention throughout this contract, and may we particularly extend our thanks and appreciation to Dave, Dale and John for their exemplary standards of courtesy, consideration and workmanship on site"

**Tel: 01832 275790**  
Office: Barnwell PE8 5PL  
Fax: 01832 275786



## Oundle Heritage Windows

PVCu • Timber • Aluminium

Traditional & Modern

**Windows • Doors • Conservatories**

10 year Insurance Backed Guarantees

Family Business



**Order your New Windows NOW**  
Call us now for a free quotation – with no obligation!