

# Nene Valley

## news

Your local independent community newspaper for East Northamptonshire

**Telephone:**  
**01522 513515**

We want to hear from you, so please submit your news story or event at [www.nenevalleynews.co.uk](http://www.nenevalleynews.co.uk)

Inside...



## Spotlight on Christmas

Page 4



## Jamie Poole – Winter paintings

Page 8

# Nene Valley Business News

In the latest installment of her column focusing on local businesses, **Marika Hillson visits Wychwood Cabinet Makers in Woodford, producers of traditional handmade kitchens and furniture.**

As the leaves on the trees turn red and gold, I find myself this month in the delightful

grounds of the Manor House Farm in Woodford. Since 2004, in an old stone building facing the paddocks,

traditional handmade kitchens, bedroom furniture and other hand crafted wooden furniture have been manufactured by Wychwood Cabinet Makers.

I am met by one of the partners, Jonathan Coleman, who shares with James Stuart over 30 years of traditional cabinet making experience. Oddly this month's feature ties in nicely with last month's, as Jonathan previously worked for Fairline Boats, hand crafting quality furniture for the yachts.

Looking at the impressive bespoke sample kitchen units and bedroom furniture on show, I note the range of styles from the traditional to the modern with handmade fittings that are unusual and beautiful in various metals and woods.

If you are shopping for a kitchen or bedroom furnishings and looking for something special, this is a one-stop shop. The business offers a design and installation service, a fine selection of natural stone flooring, an English Heritage range of paints and wallpapers by Little Greene which are environmentally friendly. The wallpaper range draws on vintage designs.

There is also a great range of marble, granite and quartz worktops to choose from. Wychwood are also agents for Aga and Miele, who supply cookers etc, and for your curtains they can recommend a local business with a range of fabric ideas.

They also manufacture furniture for your office or study and can craft unusual one-off bespoke cabinets.

The business has manufactured and supplied quality bespoke furniture as far afield as London and business has been generated mainly by word of mouth by satisfied customers.

One-to-one consultations are available by appointment to design the kitchen or bedroom of your dreams. The turnaround for a bedroom is approximately 6-8 weeks and for kitchens it's around 3-4 months.

Over the years Wychwood have employed local apprentices who have qualified as cabinet makers and now work for the business, and have also welcomed school pupils for work experience.

### A special offer

Wychwood Cabinet Makers would like to make this special offer to all our readers: Any bedroom enquiry made before the end of February 2017 for fitting during 2017 will qualify for free fitting. A very nice way to start the New Year!

Next month I will be visiting a local international award-winning business based in Rushden. Until then my best wishes to you all from your local business champion.

Marika Hillson

## In Brief

### Paralympian visits local school

Paralympian Laura Sugar visited Irchester Community Primary School on 4th October. As well as visiting the classes, Laura gave an inspirational assembly to the school. The school's sports leaders were lucky enough to have a chat with her too.

Year 5 children even had a lesson on sprinting and thoroughly enjoyed it. The whole school had a great time and really appreciated the efforts Laura made to make it fun and inspire the children, reminding them that if you set your mind to it you can achieve anything through hard work and determination!

### Rushden Town Band

On Saturday 10th December, 7-9pm, at Park Road Baptist Church, Rushden, the Rushden Town Band will be putting on a Family Christmas Concert.

The band will be joined by the Hawthorn Key Stage 2 Choir from Kettering. Tickets cost £5 and children under 16 go free. Tickets are available from Osborne's in the High Street, Rushden.



**LEARN and play**

Small Wonders

day nursery & out of school club

t: 01832 274929

Unit 2A Eastwood Road

Oundle PE8 4DF

Ofsted Outstanding Early years provider 2015

Free registration in November

Funded places available, please call to check availability

## We offer an award winning purpose built day nursery and out of school club

- ★ Now open on Saturdays for Oundle School staff
- ★ Free weekly Forest School for Pre-School children
- ★ Free weekly swimming lessons at Oundle Pool
- ★ Full Time Teacher
- ★ State of the art equipment
- ★ Focused activity room activities in preparation for School
- ★ Baby-signing
- ★ Term-time only places
- ★ Two, three and four year old funding accepted
- ★ Out of School and Holiday Club for Laxton and Oundle Primary term dates



We would really welcome the opportunity to show you around our Nursery so please call us or email at [smallwondersnursery@firstforchildcare.com](mailto:smallwondersnursery@firstforchildcare.com) to arrange a visit. We look forward to your call.





## Letters to the editor

If you would like to submit a letter to the editor please send it to [news@nenevalleynews.co.uk](mailto:news@nenevalleynews.co.uk) for consideration. The maximum word count is 200 words.

Dear Editor,  
We at Rushden's Branch of the Royal British Legion wish to express our utter disgust following the theft of a Poppy Collection Box and its contents from a Legion member's home. Whilst it was an exception to take the Poppy Collection Box home this time, it was obvious that whoever saw the collector – who is well known in the town and seen every year standing outside the shops on the High Street – knew where he lived. By way of other activities he does, the collector always attracts great attention and as a result, donations from members of the public are unquestionably

often more generous and plentiful. Those who donated on Wednesday 2nd November in the High Street will be equally appalled that their donation has fallen into the wrong hands. RBL Rushden Branch's message to the perpetrator(s) who broke in and took the money is this: Theft is bad on any occasion, but to steal money donated from the public and collected for the purpose of helping our service personnel, veterans and their families and dependants in their moment of need, is both a heinous and sickening act, especially in this month of Remembrance; you cannot get any lower; your actions are despicable and you should be utterly ashamed of yourself!

No other items appear to have been stolen and the Police are investigating the matter. The victim was out of his home at the time doing more voluntary work for another organisation.

*Rushden Branch of the Royal British Legion*

## Genealogy jottings

How do you record your sources? Do you just write 'found in 1881 census' for instance or do you quote the full census reference? Those references can be rather confusing at first if you are not sure what they mean, so here is a brief guide:

The census records are classified under the following: 1841 HO107, 1851 HO107, 1861 RG9, 1871 RG10, 1881 RG11, 1891 RG12, 1901 RG13, 1911 RG14.

### Census Pieces and Folios

Knowing the right reference for a census page lets you go straight to that page. But censuses are not referenced by book and page numbers. The references are by Piece and Folio; for example 2422/25, or more accurately, RG9 2422/25, as the RG9 tells us that it is the 1861 census.

A census Piece is a collection of many individual enumerators' books for a district.

A census Folio is a sheet within one of those books (note: not a 'page' – a folio is the

### By Jan Pearson

*Genealogy Specialists, Tracing Our Past, Discovering Our Genes (TOP DOG)*  
[www.genealogy-specialists.com](http://www.genealogy-specialists.com)

front and back of a sheet; in other words, two pages).

Each enumerator had a pre-printed book that he had to fill in. A book may have anything from about 20 sheets up to about 40 (double-sided). Those books were collected, and were later bound into combined books of between about 50 and 200 leaves. It is this combined book that is a census Piece. After binding, the books had the folio number stamped on the upper right corner of every sheet.

So, if you make sure that you have the full census references for your ancestors, you will be able to find them again should you need to check something out. Not only that, if you need to flag up an entry to someone else, then they will be able to find it quickly as well.

## Want to place an advertisement or submit an article?

If you wish to contribute or have any comments please email [news@nenevalleynews.co.uk](mailto:news@nenevalleynews.co.uk) or call 01522 513515. To advertise, call 01522 513515. Alternatively you can email [advertising@nenevalleynews.co.uk](mailto:advertising@nenevalleynews.co.uk)

If you are not receiving your copy of Nene Valley News, please email [distribution@km-media.co.uk](mailto:distribution@km-media.co.uk) or telephone 01522 513515.

If you would like to receive this publication as a download, Nene Valley News is available online as a pdf at [www.nenevalleynews.co.uk](http://www.nenevalleynews.co.uk).

You can also subscribe to Nene Valley News for £39 per annum.

Nene Valley News is produced by KM Media & Marketing, County House, 9 Checkpoint Court, Sadler Road, Lincoln, LN6 3PW.

### Copy dates for Nene Valley News

Publication date: Saturday 3rd December  
Articles to the editor by: Wednesday 23rd November

Publication date: Saturday 17th December  
Articles to the editor by: Wednesday 7th December



**KM Media & Marketing**  
Your partner in publishing  
ONLINE | IN PRINT | IN DIGITAL

## Editor's notes

There has been a deal of coverage of the recent event dubbed the 'Supermoon' and many of us were fortunate to have clear skies so that we could see it. And generally disappointing it was too!

A number of commentators had warned that this would not be a spectacular happening and bearing in mind the facts they were of course correct; apparently, at its closest the moon can be 14% closer to the earth and thus look 14% larger than when it is at its most distant. In other words, it varies 7% from its average size appearing at times larger and at times smaller.

If you have recollections of the moon appearing to be much larger, perhaps at the time of a harvest moon, the explanation is quite simple; when the moon is high overhead, it's dwarfed by the vast hemisphere of the heavens but in contrast when the moon is low, we see it in proximity to earthly

objects, such as chimneys or trees, whose size and shape provide scale. This is known as the 'Moon Illusion'.

Across the East Northants District, BT is proposing to remove 29 public payphones. Obviously, with most people having easy access to their own phones, be they mobile or fixed, there is far less call for phone boxes and it appears that of the 29 under consideration 12 have not been used in the last 12 months. However, there has been significantly greater use of a couple of those on the list. Public consultation about removing the boxes ends on 29th November, so if you wish to see which boxes might be removed, or to make a comment, go to this web address: <http://www.east-northamptonshire.gov.uk/news>.

It's worth a comment about the fact that this edition has rather more

copy relating to Oundle than anywhere else (again!); the reason for that is quite simple, we get more copy from the good people of Oundle than we do from those in other areas. We would love to balance the paper's content with more items from other parts of the District, so if you have something of interest going on locally please let us know. Ideally, we would like Word-based text ready to be inserted into the paper plus high resolution photographs but given notice we can arrange a visit to an event or to speak to a potential contributor.

Finally, early warning of our arrangements for publication over the Christmas and New Year period: our final edition for 2016 will be published on 17th December and the first edition of next year will be on 14th January 2017. Please take this into account in planning any contributions and advertising requirements.

46 Cartrill Street, Raunds, NN9 6ER  
**RAUNDS RAINBOW NURSERY SCHOOL**

**Free 15 hours or 11 hours per week**

**Free Entitlement:**

**Aged 2+**

**11 hrs 52 weeks**

**15 hrs 38 weeks**

**Worth over £2000 per year**  
**Reserve your place for next term**

**01933 624500**

**[www.raunds.org](http://www.raunds.org)**

Come & visit us • Open 8 till 6 • Children from 2 years

### Cake Decorating Supplies

For Amateurs, Professionals and Enthusiasts alike



Cake Boards, Boxes, Dummies, Cutters, Tools, Edible Glitters, Glues, Toppers, Picks, Plungers, Stencils, Pens, Brushes, Icing, Ribbons, Wires, Decorations, Accessories & much more. Come and have a browse!

From the basics - Sugar Paste, Cake Boxes and Boards to Cake Lace, Moulds and Cutters  
We have all the Baking and Cake Decorating supplies to complete your Wonderful Creations!

**SCS packaging** Shop open 7am till 5pm Monday to Friday  
Orchard Road, Finedon, Northants NN9 5JG  
Tel 01933 681 681 [www.scspackaging.co.uk](http://www.scspackaging.co.uk)



### Rushden Golf Club

Membership available from £56.88 per month.

Special offer - 15 months for the price of 12!

Still undecided? Try before you buy – Enjoy one month's trial membership for £65.

### Not a Golfer?

Looking for somewhere new to eat at lunchtime? With its pleasant surrounds and easy parking, why not enjoy a meal at Rushden Golf Club – select from our 2 for £10 or 2 for £12 menus.

Rushden Golf Club, Kimbolton Road, Chelveston, Wellingborough, Northants NN9 6AN  
01933 418511 – option 1 • [www.rushdengolfclub.org](http://www.rushdengolfclub.org)



**KM Media & Marketing**  
Your partner in publishing  
ONLINE | IN PRINT | IN DIGITAL

To advertise in  
Nene Valley News call  
**01522 513515**



# Advice Column

The Citizens Advice service is a network of charities, local and national, that between them provide advice to millions of people each year. Here, experts from Central and East Northamptonshire Citizens Advice provide answers to typical questions.

Readers willing to have their enquiry anonymously published (editor's decision final) can email Nene Valley News direct [news@nenevalleynews.co.uk](mailto:news@nenevalleynews.co.uk). Please mark such enquiries "Citizens Advice Column" in the subject.

**"My father has recently been diagnosed with cancer and I have cut down my working hours to care for him. He receives sick pay, but we are struggling financially. Is**

**there any help available for us?"**

We're sorry to hear of this – it's a very worrying time. We have a local partnership with Macmillan Cancer Support. This enables us to offer extra support to people with a diagnosis, as we know that the financial effect can be very difficult to deal with. Financial support is available for people when they become ill, as well as for their carers. What is available will depend on your circumstances.

Your father may be eligible for Personal Independence Payments (PIP) to help with his daily living and mobility costs. His eligibility will be assessed on how his condition affects him, and what support he needs.

To apply for PIP, your father can call the Department for Work and Pensions (DWP) and then complete the form he is sent. He can request a form by post, but it is usually better to start the claim over the phone, as PIP payments are backdated from the day you made your claim.

There may also be help available for you as his carer. Carer's Allowance is a financial assistance for people who have less time

to work because they are caring for someone. If you earn £110 a week or less from your job after tax, and care for your father for 35 hours a week, you may be eligible.

You can make an application on the gov.uk

By  
**Martin Lord**



website. To claim Carer's Allowance, your father needs to be in receipt of the

component of PIP which covers living costs (as opposed to mobility costs).

You may find that ongoing advice from one of our Macmillan Funded Caseworkers would be useful – to go through his options in detail and offer ongoing support. They can be contacted at our Northampton office (but cover the whole county). Call 01604 235080 and ask to speak to a member of the Macmillan team.

**citizens  
advice**

**Central & East  
Northamptonshire**

## WANTED: Stallholders in Higham Ferrers!

On Saturday 26th November, Rainbow Craft Events will be holding the first of two Christmas Craft & Vintage Fairs in Higham Ferrers. This event runs at the same time as the monthly Farmers' Market on the last Saturday of each month 9am-1pm and will be held at the Working Men's Club in November and at the Band Club on Wharf Road on 17th December. These events are always free entry and there are refreshments and an activity table to keep little ones amused while you browse.

We have a fantastic selection of stalls, making this an ideal opportunity to buy

unique Christmas gifts and decorations. Stalls include vintage clothes and jewellery, crochet, yarn and needles, children's clocks, fabric gifts, homewares, wood carvings, sand art, bespoke lamps made from pipes, handmade jewellery and upcycled furniture amongst many others! Check out the Facebook page for more information [www.facebook.com/rainbowcraftevents](http://www.facebook.com/rainbowcraftevents)

I'm currently taking bookings for 2017, especially the first 3 months of the year, so if you are interested, please send me an email to [rainbowcraftevents@yahoo.co.uk](mailto:rainbowcraftevents@yahoo.co.uk)

For the **Best Value** selection of shoes in your area why not visit your local  
**DB Factory Shoe Shop**

**NEW  
RANGES  
NOW  
IN STOCK!**

We stock the **largest range** of **Men's** and **Ladies'** boots, shoes and slippers, as well as **Children's** styles including football boots and wellies!

Opening times: Monday to Saturday 10am-5pm Sunday 10am-4pm  
Address: DB Shoes Ltd, 19-21 Irchester Road, Rushden, Northants, NN10 9XF  
Online [www.dbfactoryshop.co.uk](http://www.dbfactoryshop.co.uk)

**FREE  
ROADSIDE  
PARKING**

### Wide Feet?

Then why not visit our specialist shoe fitting centre where our team of experienced shoe fitters will help you choose the style of footwear that is suitable for your needs!

Call **01933 410 305**  
Online [www.widerfitshoes.co.uk](http://www.widerfitshoes.co.uk)  
Opening times: Monday - Saturday 10am - 4pm

**Plus 10% OFF**  
get an additional

When you bring this advert and quote code **NVX1642F**.

Offer valid in both shops until 15th April 2017

## Dale Musson

**uPVC Windows and Door Repair Specialist**

- Glass misting up units replaced with full guarantee
- Handles Broken
- Draughty Windows
- Doors not Locking/Unlocking
- Replacement Letter Boxes
- Window and Door Gearing and Hinges Replaced

Personal service from a small independent company at competitive prices



**01733 762912 /  
07860 358 400**

Having problems with condensation between your double glazed units?



## Russian Ice Stars Snow White on Ice



**WED 14 - FRI 30 DEC**  
01933 270 007 [castletheatre.co.uk](http://castletheatre.co.uk)

Castle Theatre, Wellingborough

@castle\_WEL

**CASTLE  
THEATRE**  
Wellingborough



# Spotlight on Christmas

## Oundle Town Council

HO, HO, HO it's that time of year again! The beautiful historic town of Oundle will be holding its annual Christmas Market on Saturday 3rd December from 12noon to 7pm.

The afternoon/evening will be full of Christmas cheer, with an array of stalls to cater for all your Christmas gift needs: sweet and savoury food, wine, spirits, handmade jewellery, crafts, flowers, wreaths, soft furnishings, the list goes on – everything you could possibly need to make your family Christmas extra special.

There will be Princess and Superhero characters visiting, the Yarwell & Nassington brass band, carols around the tree and all the usual Christmas Market fun.

The lights will be switched on by our Town Mayor, assisted by Telling

Tales Theatre Pantomime characters at 5.30pm, lighting up our beautiful town and adding that special feeling to help all enjoy their Christmas shopping experience.

There's FREE car parking at St Osyth's Lane – short stay, long stay parking off East Road and Laxton Junior School.

Entry is FREE and all are welcome to come along and get involved.

Road closures will be in place.

See you there.

For more information please contact lisa@oundle.gov.uk

## IndiTree

IndiTree is a young local company that manufactures clothing and soft furnishings. Our exciting designs take inspiration from the Indian region of Rajasthan, bringing warm, vibrant and colourful patterns into your

home.

Our beautiful range of hand-made products provide the perfect Christmas gifts for children, and decorations for the house. The intricacies of the pattern and production method ensure each batch of fabric is unique. The skilled construction of each printing block, through to the fabric selection and assembly by our craftsman give a truly personal flair. We look forward to your visit!

## Motorsport Vision

Struggling to come up with a Christmas gift that will leave the young ones beaming from ear to ear this Christmas? Then we may have just the solution to your problem: YoungDrive!

A renowned driving school for 11-17 year olds which allows them to sample a MINI One at Bedford Autodrome.

12-month YoungDrive! Vouchers cost just £85 and can be redeemed for an unforgettable experience which allows children and teenagers to learn the basics of car control behind the wheel of the latest dual-controlled MINI One, under the supervision of a DSA-approved instructor and in a safe, friendly and, most importantly, fun environment!

[www.motorsportvision.co.uk](http://www.motorsportvision.co.uk)

## The Bridge Hotel, Thrapston

The Bridge Hotel is open to both residents and non-residents. Whether it's our buffet lunch, afternoon tea, à la carte meal or Sunday roast, you will not be disappointed. With the talented team of chefs in the kitchen, the food is better than ever. This Christmas time we have a number of events at The

Bridge Hotel including Christmas Day from 12noon – Price £55.95 per head (Prices vary for children); Christmas Party Nights 2nd & 10th December – £26.95 per head; Robbie Williams Tribute Night 22nd December – £26.95 per head and Cabaret Evening 23rd December – £26.95 per head. To book please call 01832 732128.

## Colemans

If you are looking for lovely, traditional Christmas gifts for your family this year, then look no further than Colemans, who have been trading across the county for nearly 50 years.

Their shops are an Aladdin's cave of all things Christmassy – from beautiful pens, leather Filofaxes, traditional jigsaws, children's craft kits and sets for serious artists. As well

as wonderful products, they also offer excellent customer service and are always happy to help and advise. There is even a free delivery service, so if you are unable to carry your shopping home don't worry – Colemans will deliver! Colemans also sell gift vouchers to any value, which can be exchanged in any of their stores, so if you really can't decide they have that covered too!

In addition to the 10 retail shops, there is also the Colemans Craft Warehouse at Rushden which is open six days a week (closed Mondays). This 5,500 square foot warehouse caters for everything a crafter could need, from cardmaking to scrapbooking, patchwork and quilting to parchment craft and decoupage.

For full branch details and opening times go to [www.colemans-online.co.uk](http://www.colemans-online.co.uk)

## Nene Valley news

### UPCOMING FEATURES

**3rd December**  
Spotlight on Thrapston

**17th December**  
Christmas greetings

**14th January**  
Spotlight on Rushden

**28th January**  
Valentines/Weddings

For more information contact  
Fiona on 01522 513515 or email  
[advertising@nenevalleynews.co.uk](mailto:advertising@nenevalleynews.co.uk)



## ART Classes

Get Creative In 2017!

Knuston Hall, Tuesday 7- 9pm  
Thrapston, Wednesday 10am-12

Both Classes - 10 lessons

Contact Jamie: 07899 676769  
Email: [Jamie@jamie-poole.com](mailto:Jamie@jamie-poole.com)  
Learn to paint in the New Year!



## INDITREE

Free delivery online to Mainland UK using DELIVERY PROMO at checkout until 19<sup>th</sup> December 2016  
20% OFF EVERYTHING ALL DAY ON BLACK FRIDAY

[WWW.INDITREE.CO.UK](http://WWW.INDITREE.CO.UK)



## Oundle Christmas MARKET

Saturday 3rd December 12noon - 7pm

The beautiful town of Oundle will hold its annual Christmas Market on Saturday 3rd December from 12 noon until 7pm.

Oundle Town Council will fill the town with a traditional Christmas Market selling a wonderful array of food, gifts and goodies - everything you need for Christmas from cakes and chocolate to cheese and charcuterie.

There will also be carols, a brass band, mulled wine, mince pies and a variety of street food. To top off the excitement, the town's Christmas lights will be turned on at 5.30pm.

Free parking and the town's fabulous independent shops and cafes will be open for late night shopping, so come along and join the fun!

Oundle Town Council



## THE BRIDGE HOTEL

THRAPSTON

### Mouthwatering Sunday Carvery

**Only £14.95 for 2 Courses**  
Kids eat FREE (Terms & conditions apply)

Lunches Monday to Saturday, 12pm to 2pm  
2 courses, £11.90 for two (£5.95 per person).

Christmas brochure available now

Why not come along and try our exciting new dinner menu now available

T: 01832 732128 • E: [info@thebridge-hotel.com](mailto:info@thebridge-hotel.com)



# YoungDrive!

## AT BEDFORD AUTODROME

Your first driving lesson...  
...at Bedford Autodrome

12 month gift  
vouchers available  
for...

£85

AGES  
FROM

11-17

Get off to a winning start with our unique YoungDrive! experience. Anyone 11 and over and taller than 4'8" can take their first driving lesson in a new MINI One on the racetrack - without any of the risks associated with the public road. A DSA-approved instructor will teach you all the basics of driving as you build up to speeds of 40mph.

**TO BOOK CALL 0843 453 1000  
OR VISIT [WWW.YOUNGDRIVE.COM](http://WWW.YOUNGDRIVE.COM)**

*Calls will cost 7p per minute plus your telephone company's access charge.*

**BedfordAutodrome**

Bedford Autodrome, Thurleigh Airfield  
Business Park, Thurleigh, Bedford, MK44 2YP

# Solemans

With **FREE LOCAL DELIVERY**  
& **FREE GIFT WRAPPING**  
(during December)

**FILOFAX**

In stock or to order



SAVE  
30%!

**Jigsaws**



From  
£10.49

**Boxed Art Sets** Watercolour, Acrylic or Oil.

DALER ROWNEY Each  
£29.99



**Tool Pen** Great Dad Present!!



Each  
£15.99

Stylus, Pen, Rulers, Spirit Level & Screwdrivers!

**Gift Vouchers**



In 6 card designs

**Prestige Writing Instruments**

From Parker, Cross, Waterman & Sheaffer.

SAVE  
20%!



**Adult Colouring Books**



From  
£6.99

**Duracell Plus Batteries**

Buy 5 & Get 3 FREE

AA & AAA



Pack of 8  
£39.99

6 Tubes £2.49

**Glitter**



**Gold & Silver Sprays**



Each  
£1.99

**Oscar Deskware**

From £3.99 To £21.99



**Colour Inkjet Printer**

Scans & copies



Each  
£24.99

**Complete Art Set**



Contents worth over £100!

Each  
£39.99

**Educational Kits**



From  
£5.99

**A4 Trimmers**

Save 56%



Each  
£19.99

**Metallic Markers**

Gold Bronze & Silver

Pack of 3  
£4.99



**Shredders**



From  
£19.99

**Racing Chair**



Also in Black or Blue & Black

RRP £169

Each  
£129.99

**Colouring Pens & Pencils**



40 Felt-Tips  
£12.99



12 Colouring Pencils  
£4.69

**Tape Dispenser**



Wrapping made easy!

Each  
£2.95

• Bedford • Higham Ferrers • Kettering • Northampton • Oakham • Oundle • Peterborough • Stamford • Towcester • Wellingborough - please see [www.colemans-online](http://www.colemans-online) for full branch details

**Solemans**

**Christmas Gifts**

For all







East  
Northamptonshire  
Council

## Notice of planning applications received

**Notice is given that the following applications have been received together with the last date for making representations:**

### Ashton

**16/02122/LBC (10/12/2016) (LBRegs)**  
To convert existing ground floor store into a bathroom, return the current first floor bathroom back into a bedroom. Install a new shower room to first floor. Enlarge existing rear elevation lounge window and incorporate opening light into side elevation store door. Open up existing chimney breast to kitchen to allow installation of cooker, open up existing chimney breast to lounge to allow installation of wood burning stove at Broom Cottage 29 The Green Ashton

### Collyweston

**16/02080/FUL (03/12/2016) (Info)** Proposed diversion of an existing subterranean pipeline at OS2755 TF0001 Collyweston Great Wood Peterborough Road Duddington

### Duddington with Fineshade

**16/02093/LBC (10/12/2016) (LBRegs)**  
Replace roof lights to main house, internal alterations to barn used as office/store, re-roof, re-clad garden store and kennels and erection of new greenhouse attached to existing garden walls at The Manor High Street Duddington PE9 3QE

### Easton-on-the-Hill

**16/01505/FUL (10/12/2016) (LB/CA)**  
Installation of generator to be housed in timber fenced/gated compound at Easton House 54 Church Street Easton On The Hill PE9 3LL

### Glaphthorn

**16/02055/VAR (03/12/2016) (Info)** Variation of condition 2 - Approved plans, pursuant to Application 15/02079/FUL: Erection of five dwellings following demolition of the existing dwelling from the site including the demolition and removal of all associated outbuildings, structures, equipment, machinery and vehicles dated 11.08.16 at Braesby Southwick Road Glaphthorn PE8 5BD

### Lowick and Slipton

**16/02120/LBC (10/12/2016) (LBRegs)**  
Removal of fireplace, reinstate stone wall

with double doors and removal of kitchen walls at Lowick Mill House 11 Mill Lane Lowick NN14 3BQ

### Nassington

**16/02079/VAR (10/12/2016) (Art8)**  
Variation of condition 1 - extension of time limit for works accommodation pursuant to planning permission 13/01040/FUL at Lyveden Farm Fotheringhay Road Nassington

### Newton Bromswold

**16/01914/FUL (10/12/2016) (LB/CA)**  
Change of use of part of paddock to incorporate all-weather manege 40m x 20m for the purpose of exercising horses (Resubmission of application no. 16/00929/FUL at land rear of Newton Farmhouse 12 Church Lane Newton Bromswold

### Oundle

**16/02038/LBC (10/12/2016) (LBRegs)**  
Internal alterations to form ensuite, including new partition wall, door and associated drainage works at 12 New Street Oundle PE8 4EA  
**16/02082/PNT (03/12/2016) (Info)**  
Installation of 15m high monopole supporting 6 antennas and 1 dish, 2 equipment cabinets and development ancillary at Telephone Exchange Glaphthorn Road Oundle  
**16/02137/FUL (10/12/2016) (LB/CA)**  
Replacement of first and second floor windows at 21-23 West Street Oundle PE8 4EJ

### Raunds

**16/01488/FUL (03/12/2016) (Info)** Erection of a pair of semi-detached dwellings at 36 London Road Raunds NN9  
**16/02067/FUL (03/12/2016) (Info)** Proposed single storey rear extension at 6 Shelmerdine Gardens Raunds NN9  
**16/02074/FUL (03/12/2016) (Info)** Two storey side extension at 16 Langham Road Raunds NN9  
**16/02119/FUL (10/12/2016) (Art8)**  
**Development of two distribution buildings containing B8 warehousing space with ancillary office, B1 office and research and development space (B1c) together with vehicular access from Warth Park Way and London Road, earthworks and landscaping including the creation of drainage features**

**with green infrastructure and landscaping provision including along Meadow Lane at Land End of Scalley Way Raunds**

### Ringstead

**16/02054/FUL (03/12/2016) (Info)** Change garage roof from a flat felt roof to a pitched roof with concrete tiles to match house, create storage space from single garage parking space (1 parking space remains) at 5 Tithe Close Ringstead NN14 4TY  
**16/02150/FUL (03/12/2016) (Info)** To remove existing garage and build larger replacement at 61A Denford Road Ringstead NN14 4DF

### Rushden

**16/02003/FUL (03/12/2016) (Info)** First Floor side extension and loft conversion to include balcony area at 174 Irchester Road Rushden NN10 9QU  
**16/02004/FUL (03/12/2016) (Info)** Garage conversion incorporating a new bedroom, level access shower room facility, door widening and access ramp to rear garden at 17 Wisteria Close Rushden NN10 0XJ  
**16/02016/FUL (03/12/2016) (Info)** Demolition of existing rear conservatory, erection of rear extension and all ancillary works at 6 Aintree Drive Rushden NN10 0YS  
**16/02035/FUL (03/12/2016) (Info)** Conversion of garage to a habitable room at 12 Campion Close Rushden  
**16/02091/FUL (03/12/2016) (Info)** To erect porch on front of garage with bay to match house front at 106 Wymington Road Rushden NN10 9LA  
**16/02100/FUL (03/12/2016) (Info)** Demolition of existing 1.5 storey side extension and erection of 2 storey side extension. Demolition of rear conservatory and erection of single storey rear extension at 65 Northampton Road Rushden NN10 6AJ  
**16/02105/FUL (03/12/2016) (Info)** Proposed loft conversion to usable space at Asholme 102 Hayway Rushden  
**16/02132/ADV (03/12/2016) (Info)** Erection of 3 x illuminated external signs. White letters on black panel; 1 x 800mm, 1 x 700mm, 1 x 500mm at Unit 3 Northwalk Rushden Lakes Rushden NN10 6FG

### Stanwick

**16/02125/FUL (03/12/2016) (Info)**  
Demolition of existing single storey

extension and replacement with new single storey extension at 19 Cleburne Close Stanwick NN9 6TN

### Tansor

**16/02116/FUL (10/12/2016) (LB/CA)**  
Proposed tennis court with chainlink fencing at Tansor Court Fotheringhay Road Tansor PE8 5HP

### Thrapston

**16/02101/FUL (03/12/2016) (Info)**  
Proposed re-cladding of existing office building, installation of new windows and installation of new fascia and coping at Joinery Works Bridge Street Thrapston NN14  
**16/02104/FUL (03/12/2016) (Info)**  
Demolition of existing garage block and erection of replacement garage/annexe at 8 Swan Close Thrapston NN14 4TP

### Warmington

**16/02063/FUL (03/12/2016) (Info)** Replace existing part width rear lean to conservatory with larger mono pitched extension at 32 Acremead Warmington PE8 6TP  
**16/02072/FUL (03/12/2016) (Info)**  
Retrospective Application for conservatory, small rear extension and proposed erection of a shed at 10 St Marys Lane Warmington PE8 6UA

### Woodford

**16/02124/FUL (10/12/2016) (LB/CA)** Raise the roof level of the existing outbuilding attached to the rear of the dwelling at 1 Sunnyside Woodford NN14 4HX

**The reason for applications being advertised is as follows:**

**Part3 - Town and Country Planning (General Development Procedure) Order 2015.**

**Part16 - Town and Country Planning (General Development Procedure) Order 2015.**

**Info - Non-statutory - included for information only.**

**LB/CA - Planning (Listed Buildings and Conservation Areas Act 1990.**

**LBRegs - Planning (Listed Buildings and Conservation Areas) Regulations 1990.**

**Significant applications**

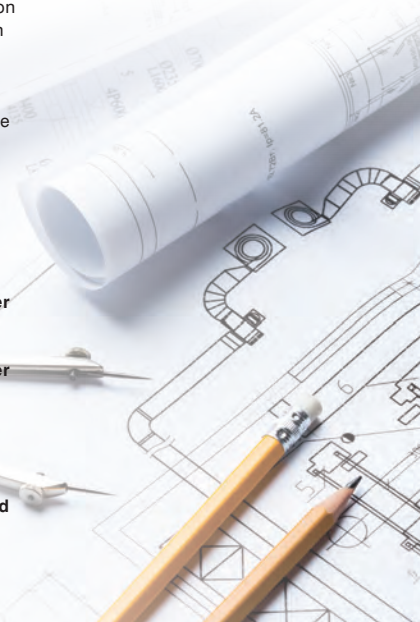
**All "significant" applications are**

**highlighted in green. These are defined in the 2006 Statement of Community Involvement as those for:**

- 100 dwellings and over
- residential development of 3ha or over if number of dwellings not known
- 1000 square metres of floor space or over
- commercial/industrial development of 1ha or over if floor area not known
- would, in the council's opinion, alter the overall character of the locality by means of scale, use or visual appearance
- would, in the council's opinion, be sensitive due to substantial demolition in a conservation area
- would, in the council's opinion, be sensitive due to development next to a listed building

**For more information on "significant" planning applications, visit [www.east-northamptonshire.gov.uk/dcnotification](http://www.east-northamptonshire.gov.uk/dcnotification)**

**Paul Bland, Head Of Planning Services  
Dated 19 November 2016**



**Consultation deadlines will differ for each application. Please go to [www.east-northamptonshire.gov.uk/planningapplications](http://www.east-northamptonshire.gov.uk/planningapplications) for details.**

# From the ENC Chairman

**On 9th November in Rushden, at the 6th East Northamptonshire annual Youth Conference, I made the opening speech. The conferences are for students from the schools in our district.**

The theme of this year's Conference was community safety in general and healthy relationships in particular. In my speech I emphasised that hate crime is a crime; that insulting people from other countries is also out of order; and that we should treat others as we would want to be treated, whether in Britain or overseas. This is an important point which needs to be repeated often at this time following the EU Referendum result and the uncertainty inevitable while

the Government is beginning negotiations for sensible future relations with other present EU states, which has led to some restiveness which is open to exploitation by extremists. In our Northamptonshire communities we have a good record for good relations between people long settled here and more recent arrivals and I am confident that this will continue.

This Youth Conference included group discussions and presentations by the students:

competing teams were invited to design innovative projects for raising awareness of the importance of healthy relationships, individual and communities. I was impressed by the idealism and creative initiative shown by the competing teams.

On 13th November, Remembrance Sunday, at the Oundle War Memorial, I laid a wreath on behalf of East Northamptonshire Council. It is important that we all remember the Northamptonshire, all British/Imperial/Commonwealth and also

allied Servicemen and women who gave their lives in the world wars and subsequently. While our Government will, by sensible and when necessary robust diplomacy, try and ensure that differences with other states are settled peacefully, it is essential that we have armed services, professionals, who will fight when wars are necessary.

Battalions of the Northamptonshire Regiment fought with courage and endurance during the Italian campaign in the Second World War. Its successor, the Royal Anglian Regiment's TAVR units have more recently been engaged in Afghanistan – with NATO including German allies.

*Cllr Rupert Reichhold  
Chairman of ENC*





# Local cinema treats for a variety of tastes

Over 11 years ago, Oundle Cinema (which includes dOCs+ and local village cinemas in Brigstock, Offord, Orton Waterville, Warmington, Stanwick, Catworth, Ringstead, Woodnewton and Thrapston) was founded by a group of volunteers to show carefully selected enjoyable films in friendly venues at a fraction of the cost of seeing them in mainstream cinemas.

Whilst the Oundle International Festival team have taken over the management of it, Oundle Cinema still operates on the same basis and makes

an invaluable contribution to the local area's cultural fabric. Those who continue to give their time to run it should be thanked for their dedication.

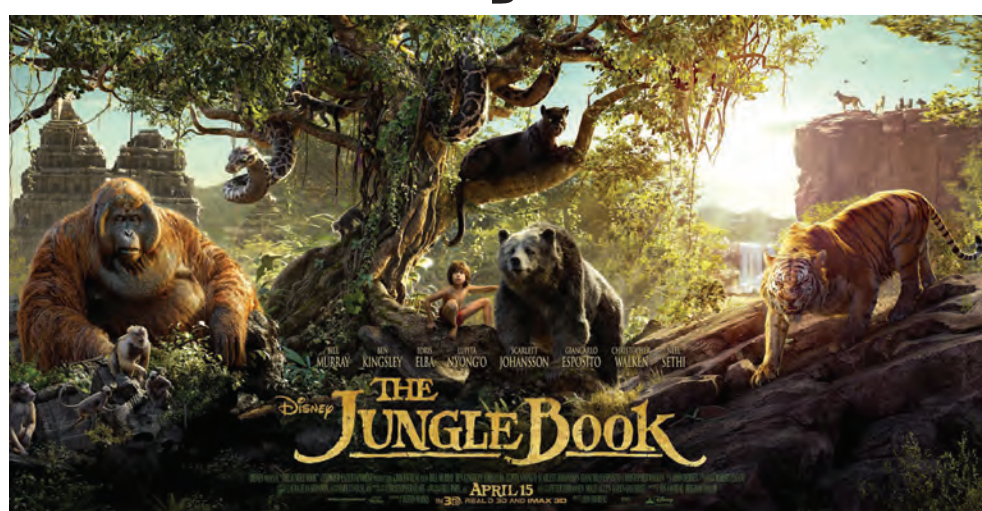
As the nights draw in, there are some excellent films being shown in Oundle and across the village cinemas, some of which are not available to download or hire through normal channels.

A screening of Matthew Bourne's smash-hit production of **Sleeping Beauty** is one such film. This brilliantly choreographed, sumptuously set, visual treat won the hearts of

thousands and smashed box-office records when performed live. It will be shown at 6pm on Sunday 27th November at The Stahl Theatre. This is another dance masterpiece, set to Tchaikovsky's glorious score, from the man who directed the all-male Swan Lake and a very entertaining production of The Nutcracker.

There are also two brilliant films on offer over the festive period. Meryl Streep and Hugh Grant star in **Florence Foster Jenkins** – the true story of an early 20th century New York socialite whose dreams of giving world class operatic performances far exceeded her talent. Stephen Frears directed this warm look at a lady whose singing was so awful, it was legendary. It will be shown on Thursday 15th December at 7.45pm.

To end the 2016 season, director Jon Favreau's magical reworking of Kipling's classic **The Jungle Book** will be



screened at 6pm on Thursday 29th December at The Stahl Theatre. Incredible CGI, some much loved songs and a host of shrewdly cast actors lending their voices to the creature characters come together to delight film fans, young and old.

dOCs+ is the documentary strand of Oundle Cinema. Its final screening of 2016 tackles one of the most pertinent issues of our age. **The Divide** looks at the growing disparity in the distribution of wealth worldwide. It

follows the lives of several UK and US citizens and highlights the many points which relate to this topic.

The local 'outreach' cinemas have a host of great films lined up to show before Christmas. They include the Le Carre classic **Our Kind of**

**Traitor**, the Austen based period comedy of **Love & Friendship**, the oldie but goodie **White Christmas**, and **45 Years** starring Tom Courtenay and Charlotte Rampling. And who could resist the fun of the recently released film of **Dad's Army**?

Film trailers, further information and advance tickets are available at [www.oundlecinema.org.uk](http://www.oundlecinema.org.uk) or through the Oundle Festival Box Office, 4 New Street, Oundle, PE8 4ED or over the phone on 01832 274734.

Email [information@oundlefestival.org.uk](mailto:information@oundlefestival.org.uk) to receive email updates about forthcoming films, follow us on facebook. [com/oundleinternationalfestival](https://www.facebook.com/oundleinternationalfestival) and @Oundlecinema.

**10% OFF WINTER SERVICING** (Valid until the end of December)

## Mowerman

### GARDEN MACHINES

DOMESTIC & COMMERCIAL

- SERVICE & REPAIR • INHOUSE WORKSHOP
- SUPPLIERS OF STIHL, HAYTER, JOHN DEERE, WOLF TOOLS AND MUCH MORE • PARTS AVAILABLE
- HIRE EQUIPMENT ALSO AVAILABLE

**MOWERMAN GARDEN MACHINES LTD**  
 UNIT 120 • LEYLAND TRADING ESTATE • IRTHLINGBOROUGH ROAD  
 WELLINGBOROUGH • NORTHAMPTONSHIRE NN8 1RT  
 TELEPHONE 01933 274410  
[enquiries@mowermanlawnservices.co.uk](mailto:enquiries@mowermanlawnservices.co.uk)

## NENE & WELLAND CALLCONNECT

Serving Oundle, Peterborough, Stamford, Thrapston and surrounding villages

CallConnect is a unique bus service whose timetable is not fixed but responds to passenger requests. The service runs from 7am - 7pm Monday - Saturday. Routes are different each day depending on the bookings made by passengers. Journey requests can be made by telephone or online. The service is designed to improve transport links in the Oundle & Thrapston areas.

For more information & to book a journey:  
**0345 2638153**  
[www.wellandcallconnect.co.uk](http://www.wellandcallconnect.co.uk)

Follow us on Twitter @CallConnectbus

Availability becoming limited - search NVR Santa for details

# SANTA & STEAM!

## SANTA SPECIALS

### 2016

A MEMORABLE CHRISTMAS EXPERIENCE FOR THE WHOLE FAMILY!

From 26th November up to & including Christmas Eve

To Book visit [www.nvr.org.uk](http://www.nvr.org.uk) or call 01780 782833



# Rotary Club of Oundle urges locals to go Purple4Polio for a polio-free world

The Rotary Club of Oundle is helping to rid the world of polio by supporting the nationwide initiative, Purple4Polio.

The campaign, which was launched by Rotary International in Great Britain and Ireland, is being supported by legendary singer-songwriter Donovan and TV presenter Konnie Huq, to encourage everyone to join together in the final push to eradicate polio worldwide.

The Rotary Club of Oundle will be holding a whole host of events in the town to raise funds and awareness of the deadly disease, which is on the brink of eradication. This started with the planting of 5,000 purple crocus bulbs at the Pocket Park in Oundle on Saturday, 5th November, with help from the local Scout Group.

There have been promising steps, with just 27 cases of polio recorded

this year. To make a polio-free world a reality, Rotary – who started the campaign to eradicate polio more than 30 years ago and has spearheaded this major health initiative ever since – is determined to raise awareness and funds to finish the job.

Adrian Simpson, President of The Rotary Club of Oundle, said: "As a club we have worked tirelessly to ensure that polio is eradicated for good, and with fewer cases being reported we believe we can end this deadly disease forever."

The colour purple has been chosen as it represents the colour of the dye which is placed on the little finger of a child on mass immunisation days, when millions of children across entire countries are protected against the disease.

Donovan is supporting this campaign because he contracted polio himself at a young age. Konnie Huq travelled to India to take part in administering immunisations against the crippling disease in 2009 and has seen first hand its devastating consequences.

For more than 30 years, Rotarians have been committed to fighting polio across the world. The amount of polio-endemic countries has dropped from 125 to just 3, with over 2.5 billion children receiving vaccinations thanks to the help of Rotary. With eradication now closer than ever, Rotary's latest campaign is designed to unite communities to engage in activities as part of what the world is hoping will be the final efforts to eradicate polio

forever.

The campaign importantly ties in with the 100th anniversary of The Rotary Foundation, Rotary's own and only charity, which has played a key role in making polio eradication close to a reality, along with thousands of other humanitarian projects both locally in Great Britain and Ireland and internationally.

President of Rotary International in Great Britain and Ireland Eve Conway says: "The world stands on the brink of an historic milestone and we must focus our efforts on the final push to eradicate this disease to ensure a polio-free world. We are now so close to finishing

the job with only three remaining countries where polio is still endemic, Pakistan, Afghanistan and Nigeria. That is why the Purple4Polio campaign is so important to raise awareness and funds. Let's join together to make history and End Polio Now and Forever."

For more information visit [www.rotarygbi.org](http://www.rotarygbi.org) and see the Purple4Polio information.

## Posada: a new Advent experience comes to Oundle

The Advent journey of Mary, Joseph and their donkey is at the heart of Posada, a tradition which originated in South America, and which is coming to Oundle. For the last 400 years or so, nations like Mexico and Guatemala have marked this special time of the year with a visual reminder of the journey of 80 long miles which Mary, heavily pregnant and in need of special care, travelled with Joseph from Nazareth to Bethlehem on the first Christmas.

Posada brings the story out of the church and into the community. Mary, Joseph and the donkey, represented by knitted figures, 'travel' during the Advent period and need places to stay along the way. Look out for them in Oundle's shops, schools and care homes as they provide shelter for a day and a night. Each day, the figures will move from one posada (Spanish for 'lodging place' or 'inn') to another, stopping where there is a place for them and a warm welcome

waiting. Through posada, we are invited to reflect on true hospitality and on what Advent really means: the time of the year when we think about the coming of Emmanuel, 'God with us', at Christmas.

Oundle's Posada begins on the first Sunday in Advent, 27th November, and will end at Carols by Candlelight at Oundle Baptist Church, Oundle Primary School, Cotterstock Road, Oundle, on Sunday 18th December at 6pm, at which all are welcome.

## Northamptonshire Macmillan County Ball

The Northampton and the Wellingborough & Rushden Fundraising Committees have come together to organise the Inaugural Macmillan Northamptonshire County Ball, which will take place on the evening of 11th March 2017 in The Grand Pavilion at Wicksteed Park. All monies raised from the event will stay in the county to fund cancer care for local patients.

"Sadly, year upon year the demand for Macmillan Cancer Support's services increases in Northamptonshire. We would love the people in the county to get behind this event to help us ensure that we can help to provide the care that is needed by local patients," says committee member

Sally Fordyce.

The guests will be welcomed on the evening with a drinks reception followed by a four-course dinner. Throughout the evening there will be music and dancing with a live band and a disco. A silent auction will also be held using iPads on the tables, with some amazing lots on offer – holidays, sporting events and experiences. There will also be a raffle for which local businesses have already donated some fantastic prizes as well as casino tables.

Local companies

are being offered the opportunity to provide some sponsorship for the event in return for advertising on the Ball website and social media beforehand and on the auction iPads on the evening. If you would be interested, please see contact information below.

Tickets for the black-tie event cost £75 or £700 for a table of 10 people and can be purchased via [macmillancountyball@gmail.com](mailto:macmillancountyball@gmail.com). Demand will be high so please book as soon as possible to avoid disappointment.

If you would like any further information about the event or are able to offer sponsorship, please call Yvonne on 01604 846666 or Sally on 07873274514. More details can also be found on our website [www.northantscountyball.com](http://www.northantscountyball.com) and updates can be found on our Facebook page Northants Macmillan County Ball.

## Poems inspire paintings

The poetry of John Clare (1793–1864) 'The Northamptonshire Peasant Poet', has been the inspiration for my new winter paintings. Reading Clare's joyous poems reminds us of how beautiful the world outside is – even in the dark winter months. Using poems such as 'The Winter's Spring', I have created text art that captures the atmosphere of the season.

View my new paintings at Kettering Alfred East Art Gallery at the Winter Glory Art Exhibition from 7th December to 7th January.

Also: Stanwick Village Hall Art Fair, on Saturday 26th November 12noon–5pm. The Northampton Town and County Art Exhibition at Northampton Museum and Art Gallery from 3rd December to 18th February. Contact me: [Jamie@jamie-poole.com](mailto:Jamie@jamie-poole.com)





# Santa, Solstice and Scandinavian wildlife at Stanwick Lakes

**As the days turn colder, Stanwick Lakes welcomes birds such as wigeon, lapwing and golden plover who over-winter in the reed beds and lakes of the nature reserve.**

These, and other species of birds, fly south from their summer breeding grounds in Scandinavia to the warmer climate of the Nene Valley where food is more plentiful. To discover more about these birds and see them for yourself, book your place on the Family

RSPB Bird Walk which takes place on Sunday 4th December between 10am and 12 noon.

Of course it is not just the birds that will be flocking to Stanwick Lakes over the next few weeks. Rockingham Forest Trust, the environmental charity

## District council committee asks for constituencies to be renamed as part of Boundary Commission Review

East Northamptonshire Council's Policy and Resources Committee agreed the Council's submission to the Local Government Boundary Commission on future warding arrangements for the Parliamentary constituencies at its meeting this week 7th November.

Members agreed to respond to the current Boundary Commission Review consultation with two requests:

- That there should be minimum disruption to electors across North Northamptonshire as a result of any boundary changes
- That the two constituencies covering East Northamptonshire should be renamed 'Corby & East Northamptonshire' and 'Wellingborough & Rushden'

Council Leader, Steven North, explained: "We believe that, unless absolutely necessary, constituencies should remain as close to how they are currently configured

as possible to avoid confusion for residents and that the two constituencies in our district should be properly recognised in council and geographical terms. A more accurate naming of the constituencies would help to identify the invaluable contribution that local residents and our communities make to constituency life."

Town and parish councils in East Northamptonshire will be contacted shortly to make them aware of the boundary review, of the district council's proposals and to encourage them to take part in the consultation.

The Commission will publish its draft recommendations on 9th February 2017 and a further period of consultation will last until 4th April. Final recommendations will be published in July 2017. New wards will apply for the Council elections in 2018.

Visit the Boundary Commission website [www.bce2018.org.uk/](http://www.bce2018.org.uk/) for more details of the review.

which manages the site, will be hosting seasonal activities sure to delight visitors. On Sunday 27th November drop into the Visitor Centre to help decorate the Christmas tree and make decorations to take home. Then between 10am and 4pm on Saturday 17th December, a festive indoor market, carols and children's craft activities combine to make a fantastic family Christmas celebration. Santa and Mrs Claus will be at Stanwick Lakes throughout the festive season and will be welcoming children into their grotto between 11am and 4pm on the 3rd and 4th, 10th and 11th and 17th and 18th of December. Tickets are £4.50 per child and include a present. And on weekdays, from Monday 5th until Wednesday 21st December, the Stanwick Lakes cafe will be serving two and three course Christmas lunches, booking for which is essential on 01933 625522.



The final event of the year will mark the Winter Solstice – the shortest day of the year. Wrap up warm to take part in the Stanwick Lakes Solstice Walk lantern procession and carols on Wednesday 21st December from 5pm. Bring a torch to light your way, or book a place to make a willow lantern at a craft workshop on either the 2nd, 3rd or 4th December. Booking is essential for the Solstice Walk and for details of all of these festive events and how to book, visit [www.stanwicklakes.org.uk](http://www.stanwicklakes.org.uk), the Stanwick Lakes facebook page or ring the Visitor Centre on 01933 625522.

## Belinda Bauer: The Beautiful Dead

*Tuesday 6th December, 7.45-8.45pm, at St Peter's Church, Oundle, PE8 4AL*

Hear about the highly anticipated and extraordinary new crime novel from Belinda Bauer, twice winner of Crime Novelist of the Year.

The Beautiful Dead is Belinda's seventh book.

Eve Singer needs death. With her career as a TV crime reporter flagging and increasing pressures at home, she'll do anything to satisfy her ghoulish audience. Her career is built on the bones of the dead; her one aim to secure that perfect shot of the body bag. And luckily for Eve, there is a serial killer at work in London...

The killer needs death too. He sees beauty in death and revels in watching his victims take their final breath. For the killer, the line between artist and executioner is irrevocably blurred. He even advertises his macabre public performances, inviting the public to see his 'show'.

When he contacts Eve and offers her unrepresented access to his plans, she welcomes the chance to be first with the news from every gory scene. Until she realizes that the killer has two obsessions.

One is public murder.  
And the other one is her...

Our best ever Christmas display is Now Open...



19/20th Nov: Festive Food & Artisan Market. Over 45 crafts, foods, gifts and oodles of loveliness. Our biggest ever market.

End Nov: Real trees on sale

The return of our Giant Snowglobe, book now at [bosworthsgc.co.uk/snowglobe](http://bosworthsgc.co.uk/snowglobe)



Bosworth's Garden Centre, Finedon Road,  
Burton Latimer NN15 5QA  
T: 01536 722635 • E: [info@bosworthsgc.co.uk](mailto:info@bosworthsgc.co.uk)

From 26th Nov: Santa's Grotto –  
book now at [bosworthsgc.co.uk/grotto](http://bosworthsgc.co.uk/grotto)





# Don't put off getting the flu vaccination – it's free because you need it

**Cold weather doesn't have to go hand in hand with illness. Getting the flu jab is one way to help you and your loved ones stay well this winter.**

**F**lu vaccination is part of the Stay Well This Winter campaign, a joint initiative from NHS England and Public Health England, to help the public ward off common winter illnesses.

Flu is a highly infectious disease and can lead to serious complications if you have a long-term health condition like: COPD; bronchitis, emphysema; diabetes; heart, kidney or liver disease or have suffered a stroke. Flu on top of health conditions like these can easily develop into something very serious and could land you in hospital.



People with these and other long-term health conditions are eligible for a free flu jab through their GP or pharmacist.

The flu campaign also targets pregnant women and parents of children aged 2, 3 and 4 and in school years 1, 2 and 3. For eligible children, the flu vaccine is not an injection, just a quick nasal spray.

Flu can be horrible for

little children, and if they get it, they can spread it around the whole family.

Children who get the flu have the same symptoms as adults – including fever, chills, aching muscles, headache, stuffy nose, dry cough and sore throat. Some children develop a very

high fever or complications of flu, such as bronchitis or pneumonia and may need hospital treatment.

The flu vaccine can help protect your child from flu and also reduce the chance of flu spreading to others.

If you have a child aged 2, 3 or 4, get their free nasal spray flu vaccine from their GP. Children in school years 1, 2 or 3 will get their vaccinations through their

school in most parts of the country.

Pregnancy naturally weakens the body's immune system and so flu can cause serious complications for you and your baby. Pregnant women who get the flu may be less

able to fight off infections, increasing the risk of becoming ill. The flu jab is the safest way to protect you and your baby against flu and you can have it at

any stage of pregnancy, however fit and healthy you might feel.

If you are eligible for the flu vaccine get it now – it's free because you need it.

Contact your GP, pharmacist or midwife to get the flu jab. Visit [www.nhs.uk/staywell](http://www.nhs.uk/staywell) for more information.

## Oundle artists exhibit

**T**he wonderful Yarrow Gallery in Oundle will once again host the 'Whisper Through The Trees' Art Exhibition. From Saturday 3rd through to Saturday 10th December, this event will exhibit art from some of the most talented 'creatives' working in the surrounding area.

Open daily from 10am until 4pm, visitors will be able to view and purchase high quality unique artwork, ranging from paintings, ceramics, sculpture, jewellery, monoprints, linocuts, textiles, mosaics and greeting cards. The work covers a wide mix of genres, mediums and styles, providing a rich variety of art.

The Yarrow is a particularly fine gallery, having been purpose-built in the early 20th century as a museum for the arts. Its architecture and grandeur are a treat for exhibiting artists and visitors alike.

Entry to the exhibition is entirely free and all are welcome. Free car parking is available in the surrounding streets and town car parks. Oundle town has much to offer any visitor, with many independent retailers, wonderful historical architecture and a wide selection of fine eateries. The gallery is situated on Glapthorn Road (near to the Great Hall), PE8 4JF.

  
www.colemans-online.co.uk  
Unit 6, Brindley Close,  
Rushden, NN10 6EN.  
T: 01933 355530

**Now Open 6 Days A Week!**

Monday: Closed  
Tuesday to Saturday: 9.00 to 5.00  
Thursday - Late Night: 9.00 to 8.00  
Sunday: 10.00 to 4.00

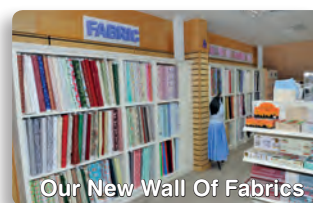
### VISIT THE NEWLY REFURBISHED COLEMANS CRAFT WAREHOUSE!



Our New-Look Craft Warehouse



Same Great Staff!



Our New Wall Of Fabrics



New Weddings Section



Embellishments Galore!



New Café



New Demonstrations & Workshops Area

Colemans Craft Warehouse has just re-opened, completely re-furbished with a new mezzanine floor for Workshops & Demonstrations, a brand new Café area & wonderful new displays to show off all your favourite craft & haberdashery supplies! Also, we now **OPEN 6 DAYS A WEEK!**

Although the layout has changed we are pleased to report that we still have the same team of dedicated & knowledgeable crafters to give you inspiration & advice.

### Our Next Big Craft Day Is On Saturday 3rd December - FREE EVENT!

On the **first Saturday of each month** we hold one of our famous **Big Craft Days**. We have simultaneous craft demonstrations by professional demonstrators which are continuous between 10.00am and 4.00pm. There are lots of **special offers** and **free refreshments**. We open for shopping at 8.30am. Demonstrations start at 10.00am. Our next Big Craft Day will feature the following demonstrations:-

**Creative Expressions** – **John Lockwood** will show us his own range of rubber stamps, **Sue Wilson's** latest dies and **Cosmic Shimmer** products.

**Clarity Stamps** – **Paul Church** is in the 'Groovi' mode once again! Bringing us the most recently released plates, he will demonstrate the many variations when creating beautiful parchment cards.

**Sherry Calvert** is our beading expert & will be showing us different techniques in seed bead work.

**Helen Jennings** will be making some quick and easy Christmas cards.

## Craft workshops



Our popular Craft Workshops are great value at £7.50 to £30.00 per session.

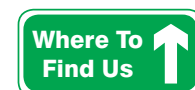
Unless otherwise stated, this includes refreshments plus all the equipment and materials required for your chosen project.

There are over 50 Workshops to choose from & all are held in an informal, fun atmosphere.

To book, check availability or to request a leaflet detailing the dates and content of our workshops please tel: 01933 355530, ask at any Colemans branch or look online at [www.colemans-online.co.uk](http://www.colemans-online.co.uk)

### Recent comments from our visitors' book:-

Wow! What hard work you have all put in. Amazing.  
Thank you!! – R. W., Yaxley  
Lovely – even more tempting! – T. B., Barton Seagrave  
Better than ever!! – J.C., Felmersham  
First visit – won't be my last – S. R., Sawby

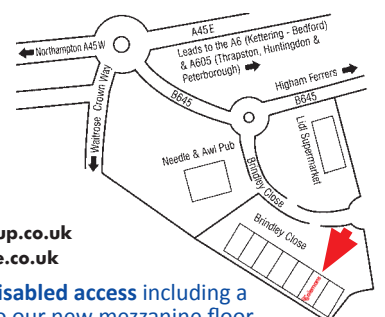


Unit 6 Brindley Close  
Rushden  
Northants  
NN10 6EN

T: 01933 355530

E: [craft@colemangroup.co.uk](mailto:craft@colemangroup.co.uk)  
[www.colemans-online.co.uk](http://www.colemans-online.co.uk)

 We offer full disabled access including a passenger lift to our new mezzanine floor





### Sunday 20th November Morning Service

Thrapston Baptist Church  
10.30am  
Preacher: Andy Saunders – Baptist  
Missionary Society.

### Monday 21st November

**Lecture by Dr Jonathan Shanklin, Emeritus Fellow, British Antarctic Survey, Cambridge on 'A Comet's Tale'**  
Chelveston Village Hall, Caldecott Road, Chelveston NN9 6AT  
8pm  
Visitors and Members welcome. £3 per person including tea/coffee and biscuits. Further information from Steve Williams on 01933 650331 or email: [chilternastro@yahoo.co.uk](mailto:chilternastro@yahoo.co.uk) or Mrs Peta Jellis on 01933 356914 or email: [pej@petaj26.me.uk](mailto:pej@petaj26.me.uk) Learn about great comets of the past and those that may become visible in the future.

### Painted Wooden Christmas Garland Project

Ringstead Village Social Club  
10am-4pm, £35 booking essential  
01933 460676  
As a beginner, complete this project in a day and take home the full pattern pack with instructions.

### Higham Ferrers W I Meeting

Adult School, Westfield Terrace, Rushden  
2.15pm  
Olga Earl 01933 412848  
Speaker on the day Polly Feeley (memories of the 60s), followed by competition. All are welcome.

### Tuesday 22nd November

#### Four Seasons Mini Frames Project

Ringstead Village Social Club  
10am-1.30pm, £20 booking essential  
01933 460676  
For complete beginners, no painting skills required. Decorate four small frames to match the seasons.

### Wednesday 23rd November

#### Bridge of Grace Food Bank

Thrapston Baptist Church  
1.30pm-2.30pm  
Help for any who are in desperate need of food.

### Thursday 24th November

**Tiddlers Group for 0-3 year olds**  
Thrapston Baptist Church  
9.30am-11.30am  
Friendly and welcoming with lots of toys and play equipment for the little ones to enjoy. £1 per carer – as many toddlers as you like!

### Lunchtime Concert – Singers

St Peter's Church, Oundle  
1.15pm  
Free/Lunch can be purchased  
Concerts in this beautiful church setting in Oundle. Lunch is provided for £3.

### Acrylic Painting

Ringstead Village Social Club  
10am-2pm, £18 Booking essential  
01933 460676  
For complete beginners, a stunning winter landscape using acrylics – no drawing involved.

### Joanne MacGregor

Oundle School's Great Hall  
5pm – Masterclass / 7.45pm – Piano Recital  
£10 adults £8 Concessions (free under 18s)  
Joanna MacGregor is one of the world's most innovative musicians, appearing as a concert pianist, curator and collaborator.

### Rushden Area Refugee Support Meeting

The Bridge Community Office at

Whitefriars Junior School, Boughton Drive, Rushden  
NN10 9HX  
7.30pm, free admission  
Andrew Presland 01933 316927  
Looking at several ways in which local people can support refugees – all welcome.

### Friday 25th November

#### Fusion for 7-11 year olds

Thrapston Baptist Church  
6.30pm-8pm, £1 per child  
Lively and fun group with games, songs and bible based illustrations.

### Christmas Rose Box & Card

Ringstead Village Social Club  
10am-2pm, £20 Booking essential  
01933 460676  
Paint a gift at this class. Includes project book to paint more at home.

### Saturday 26th November

#### Creative Writers @ The Museum

Northampton Museum and Art Gallery, Guildhall Road, Northampton NN1 1DP  
10.30am-3pm, £10  
01604 837397 to book  
Creative writing workshop to mark the 10th Anniversary of CW@M

### Christmas Fayre

Saint Mary's Church, Little Addington (NN14 4BD)  
2pm-5pm, free admission  
To book a stall contact Jean 01933 650245 or Lesley on 650788  
Stalls including Crafts, Christmas Table Decorations, Cakes, White-Elephant, Children's Games and Books, Tombola, Giant Raffle. Teas and Cakes etc. (Disabled toilet facilities)

### The Swivel Club presents Live

**'Forever in Blue Jeans'**  
**50s/60s/70s Rock and Roll Show**  
Rushden Bowls Club Northampton Road NN10 6AN  
8pm till late, tickets £15 from [www.swivelclub.org.uk](http://www.swivelclub.org.uk) or 07738080470 or Rushden Bowls Club 01933 312680  
Check website for next two events: Typically Tina and The Searchers, 17th and 27th December.

### Craft & Vintage Fair

Working Men's Club, Westfield Terrace, Higham Ferrers  
NN10 8BB  
9am-1pm, free admission  
[Louise.rainbowcraftevents@yahoo.co.uk](mailto:Louise.rainbowcraftevents@yahoo.co.uk)  
A fabulous monthly event during the Farmers' Market. Unique Christmas gifts and decorations!

### WPHSA Xmas Fayre

Brigstock Village Hall  
2pm, admission: 50p  
01536 330324  
Stalls include cakes, preserves, tombola, bric-a-brac, books, toys, Christmas items, gifts, raffle. Refreshments available.

### Rutland Sinfonia

**Orchestral Concert**  
St Peter's Church, Oundle  
7.30pm, tickets in advance from Oundle Box Office – 01832 274734, [www.oundlefestival.org.uk](http://www.oundlefestival.org.uk)  
Tickets on the door £13 (£11 in advance), Concessions on the door £11 (£9 in advance), Children and Students in full time education £3  
Paul Hilliam (Conductor), Robert Markham (Piano): Sibelius – Finlandia; Grieg – Piano Concerto; Beethoven – Symphony No 5.

### Thrapston Christmas Lights Festival

High Street, Thrapston  
3.30pm-6.30pm, free entry  
Funfair, side stalls, live music and

entertainment, meet Santa, street food, fun for all!

### Christmas Bazaar

Stanwick Primary School  
2pm-4.30pm, free entry  
Email [foss.commitee@gmail.com](mailto:foss.commitee@gmail.com)  
Christmas Bazaar to raise funds for Stanwick Primary: raffle, gifts, crafts, tombola, Santa's Grotto.

### Sunday 27th November

#### Ringstead Shared Church

NN14 4DA  
10.30am Advent Sunday Service – Revd Jo Williams. 6pm Evening Meeting – Revd Robert Shehane  
Prepare for Christmas with us. [www.ringsteadsharedchurch.org.uk](http://www.ringsteadsharedchurch.org.uk)

### Whitefriars Church – Morning Worship with Holy Communion

Whitefriars Junior School, Boughton Drive, Rushden  
NN10 9HX  
10.15am  
Chris Youngman 01933 551769  
An informal church service open to all.

### Oundle International Festival & Oundle Cinema: Matthew Bourne's Sleeping Beauty (U)

Stahl Theatre West Street Oundle Peterborough PE8 4EJ  
6pm, £12/£5 under 18s  
Oundle Festival, 4 West Street, Oundle, PE8 4ED. Tel.01832 274734 [www.oundlefestival.org.uk](http://www.oundlefestival.org.uk), [information@oundlefestival.org.uk](mailto:information@oundlefestival.org.uk)  
Smash-hit production set to Tchaikovsky's music, with humour, contemporary references and accessible theatrical dance.

### All-Age Family Service – one hour service for all ages

Thrapston Baptist Church  
10.30am  
Preacher: Mat Hussain  
The Miracle of the moment.

### Sunday@6 Informal Sunday

Evening Event  
Thrapston Baptist Church  
6pm  
Neil Mathieson: 'Why Should the Devil have Jug Band Music?' Free admission, refreshments provided.

### Monday 28th November

#### Evening Snowfall in Watercolours

Ringstead Village Social Club  
10am-2pm, £18 Booking essential  
01933 460676  
For complete beginners a lovely watercolour no drawing skills required.

### Wednesday 30th November

#### Bird on a Milk Churn in Acrylics

Ringstead Village Social Club  
10am-4pm, £25 booking essential  
No drawing skills needed for this charming subject, use easy acrylic paints.

### Thursday 1st December

#### Lunchtime Concert – Woodwind

St Peter's Church, Oundle  
1.15pm, free/Lunch can be purchased  
Concerts in this beautiful church setting in Oundle. Lunch is provided for £3.

### Ringstead Shared Church Thursday Club

2.30pm, £1 including tea and cakes  
Craft for Christmas

### Tiddlers Group for 0-3 year olds

Thrapston Baptist Church  
9.30am-11.30am  
Friendly and welcoming with lots of toys and play equipment for the little ones to enjoy. £1 per carer – as many toddlers as you like!

### Friday 2nd December

#### Fusion for 7-11 year olds

Thrapston Baptist Church  
6.30pm-8pm, £1 per child  
Lively and fun group with games, songs and bible based illustrations.

### A Musical Celebration of Christmas

St Mary's Church, Burton Latimer NN15 5LU  
7.30pm, tickets £7 including refreshments  
Pippa 01536 391778 or from Fuller Coffee House, Newland St, Kettering (Monday & Friday mornings only).  
Our annual charity Christmas Concert this year in support of Kettering & District Samaritans.

### Whitefriars Church Retireds' Group: Christmas Songs with Gill & Jeff Crow

Whitefriars Junior School, Boughton Drive, Rushden  
NN10 9HX  
1.30pm-3pm, free  
John & Celia Underwood  
01933 676989  
A friendly group to which all of retirement age are welcome.

### Saturday 3rd December

#### Advent Fayre and Coffee Morning

Warmington Village Hall  
10am-12noon, £1 to include coffee and mince pie  
Kathryn Baird 01832 280249  
Popular event in preparation for Christmas and fund raising for St Mary's Church, Warmington.

### Christingle Service

St Mary's Church, Rushden  
2.30pm  
All Welcome, in aid of The Children's Society.

### Christmas Fayre

Wesleyan Church Hall, Queen Street, Rushden  
10am-12noon, to book a stall for £5 email [eastnorthantscontactservices@gmail.com](mailto:eastnorthantscontactservices@gmail.com)  
Bacon rolls, cakes, various stalls, Father Christmas in his Grotto. In aid of ENCCS-CIC Child Contact Centre based in Rushden.

### Treasure Island

Saxon Hall, Raunds  
7pm-9pm, child: £6, adult: £7, family (2+2): £22, tickets available in Raunds Post Office. Traditional family pantomime from Broken Pipe Productions. Full of laughs, mishaps and slapstick – a show not to be missed!

### Sunday 4th December

#### Christingle

St Peter's Church, Newton Bromswold  
10am  
Helen Lines 03301531059  
Raising funds for The Children's Society.

### Ringstead Shared Church

10.30am  
Communion Service led by Revd Robert Shehane Group for younger children. A warm welcome awaits you.

### OBC at the Movies

Oundle Baptist Church  
10.30am  
Oundle Primary School, Cotterstock Road  
Free tea, coffee and cakes as we look at the Big Questions of life using clips from the film 'Homeward Bound', as we look at the theme of Journeys. All welcome.



### Morning Service

Thrapston Baptist Church  
10.30am  
Preacher: Mike Elcome  
The Miracle of the Message (Hebrews 1:1-3)

### Higham Ferrers Footpath Group

Saffron Road Car Park, Higham Ferrers for car sharing  
9.30am, Free  
01933 386839  
5 mile walk from Easton Maudit.

### Sunday 4th December

#### Event First Sunday Event

The Salvation Army Church Street, Rushden  
6pm  
George Ellitson 01933 313106  
Guests for the evening, Gary and Suzanne Rose (vocal and instrumental) with complimentary refreshments at 5pm.

### By Appointment

#### Counselling and Listening Service

No 1 St Osyth's Lane, Oundle, Northants PE8 4BG  
These services are free  
Marilyn 07936015965

### Housing, Benefits and Employment Advice

No 1 St Osyth's Lane, Oundle PE8 4BG  
Free  
[office@oundlebaptist.org.uk](mailto:office@oundlebaptist.org.uk) or 01832 770010

### Every Weekend until 30th October

#### What's In Store – Exhibition

Oundle Museum, at The Courthouse, Mill Road PE8  
Sat 11am-5pm, Sun 2pm-5pm

### Half-Term

#### All-age Touch Typing Club

9.30am-10.30am Mon-Fri  
Diane Gifford 07432 123 438  
Learn or Refresh your skill £15 course intro with coffee refreshment.

### Every Monday

#### Titchmarsh Folk Dance Club

The Club Room, High Street, Titchmarsh NN14 3DF  
8pm-10pm, £1 inc tea/coffee  
Kev Prigmore 01536 514023/[titchmarshfdc@gmail.com](mailto:titchmarshfdc@gmail.com)

### Oundle Ladies Running Group

Oundle pool car park  
6.45pm  
Jane Walker 01832 272898/[janewalkercakes@icloud.com](mailto:janewalkercakes@icloud.com)

### Baggy pants Yoga

Studio 2, Pemberton Centre, HE Bates Way, Rushden  
10am-11am  
01933 382837/07873 743256/[carole.wyatt@virginmedia.com](mailto:carole.wyatt@virginmedia.com)  
£5 per session.

### Every Monday (term time)

#### Praise and Play

St James' Church Thrapston  
1.30pm-2.45pm, refreshments available  
Anita 735443

### Aqua Aerobic Classes

Oundle School Swimming Pool, Milton Road, Oundle  
8.45-9.30am, £25 for 5 sessions  
01832 277208/277195

### Every Monday, Friday & Saturday (term time)

#### Otters Swim School Lessons

Oundle School Swimming Pool, Milton Road Oundle  
Mon 3.55pm-6.10pm, Fri 3.55pm-6.10pm, Sat 8.30am-12noon, booked in advance as a block (£5.50 per lesson)  
01832 277208/277195

### 1st Monday of the month

#### Oundle Wives

Methodist Church, Oundle  
7.45pm, £3 refreshments/raffle  
01832 272178

### Oundle & District Royal British Legion Meeting

The Talbot Hotel, Oundle  
7pm  
Les Starks 01832 270073

### Every 2nd Monday (except January & August)

#### Thrapston & District Royal British Legion Branch Meeting

The Thrapston Centre, High Street, Thrapston  
7.30pm  
Veronica McCurdy 01832 735206

### 2nd Monday of the month

#### Royal British Legion Rushden Branch Monthly Meeting

Rushden Football & Social Club, Hayden Road, Rushden  
7.15pm, annual fee £17  
Jake Baker 07525 441267

### 2nd & 4th Mondays of the month

#### StitChat

No 1 St Osyth's Lane, Oundle  
1.30pm-3.30pm  
01832 770010/office@oundlebaptist.org.uk

### Monday once a month

#### Woodturning Club

Hardwick Village, Nr Wellingborough NN9 5AL  
7pm-10pm  
Paul Lawman 01933 674260

### Every Monday & Thursday

#### Oundle Bridge Club

Fletton House, Fletton Way, Oundle PE8 4JA  
7pm start  
01832 273044

### Every Tuesday

#### Coffee Stop

Rushden Mission Church, Wellingborough Road NN10 9TA



10am-12.30pm  
Alan Richardson 01933 355302

**East Northants Classic Motorcycle Club**  
New Inn Public House, Wymington  
Meet around 7.30pm

**Sling Walk**  
11am  
01933 410112  
First Tuesday of the month there will be Sling Library at 10am prior to the walk. Second Tuesday meet at Rushden CC Hayway instead of Higham Ferrers.

**Rushden Mission Training Band**  
Mission Church, Wellingborough Road, Rushden  
7.30pm-8.45pm  
Alan Richardson 01933 355302

**Short Mat Bowls**  
Saxon Hall, Raunds  
1.45pm-4pm, £3  
01933 624545

**Yoga Class**  
Whitefriars Infant School, Boughton Drive, Rushden  
7.15pm-8.15pm, £5 per session  
Carole 07873743256 or email carole.wyatt@virginmedia.com

**Every Tuesday (term time) Toddlers' Drop In**  
No 1 St Osyth's Lane, Oundle  
9.15am to 11.30am, free  
office@oundlebaptist.org.uk or 01832 770010

**Tuesday Toddlers**  
No 1 St Osyth's Lane, Oundle PE8 4BG  
9.15am, free  
Judith Brshaw on 01832 770010

**1st Tuesday of every month Great Companions (single people 55+)**  
Rushden Bowls Club, Northampton Road  
7-9pm, yearly membership £6  
Pat Bazeley 07931 964360

**2nd Tuesday of the month Tea Dance**  
Pemberton Centre, Rushden  
Dancing to 'Music Box'  
2pm-4pm, £3 per person including tea/coffee & cake

**Higham Ferrers Guided Tour**  
Groups of 6 minimum. Trained guides. Tea & cakes, optional.  
01933 411191

**Wildlife Trust Little Bugs Club**  
10am-11.30am, £1 per child (adults are free)  
Louise Tuffin 01604 774043/louise.tuffin@wildlifebcn.org

**50+ Adventure Club**  
For further information  
01536 505548/www.fiftyplusnorthantsadventureclub.org.uk

**Every Tuesday & Thursday Health Walks Stanwick Lakes**  
10am-11am, free – car park charges apply.  
01933 625522  
www.stanwicklakes.org.uk

**Short Mat Bowls**  
Saxon Hall, Raunds  
1.45pm-4pm, £3  
01933 624545

**Every Tuesday, Thursday & Friday Whist Drive**  
Rushden Bowls Club  
Northampton Road, Rushden  
7.30pm, £2  
01933 313714

**Every Tuesday & Saturday Coffee Mornings**  
St James Church Thrapston  
10am-12noon  
01832 730019

**Every Wednesday Dog Training and Socialisation and Ringcraft**  
Halefield, Woodnewton, near Oundle  
Classes from 6.45pm  
01832 293432/oundledogs@aol.com/www.oundledogs.co.uk

**Rainbow Cafe for Tots**  
(aimed up to 5 and their adults)  
Stanwick Lakes  
10.30am-12noon, £2.50 per child – car park charges apply.  
01933 625522  
www.stanwicklakes.org.uk

**Club Night**  
Apethorpe Tennis Club  
From 6pm

**Returners to Work**  
No.1 St. Osyth's Lane  
10am-12noon  
01832 770011

**Art & Craft Class**  
Oundle Rural Mind, 1 Herne Park, East Road, Oundle PE8 4BZ  
Irene Issitt – Manager  
01832 275020

**Inflatable Fun Session** (Times may vary during school holidays)  
Oundle School Swimming Pool, Milton Road Oundle  
5-6pm, £3 Adult & £2.25 Child  
01832 277208/277195

**Cambridge First Certificate in English**  
The Old Town Hall,

Market Place, Oundle  
9.30am-12.30pm, £25 per week  
01832 776336/  
info@antlerlanguages.co.uk

**French Tuition**  
The Old Town Hall, Market Place, Oundle  
From 6pm, £25 per week  
01832 776336/  
info@antlerlanguages.co.uk

**Every Wednesday (term time) Community ICT Classes**  
Needham Building, Oundle  
School SciTec, Glapthorn Road, Oundle  
2.30pm-4pm

**Yr 7 & 8 Sports Club**  
Sports Hall, Milton Rd, Oundle  
7.45pm-8.45pm

**660 Club**  
Two Acre Club, off Milton Road  
2.15pm-3.45pm  
Afternoon tea and entertainment for 60+ hosted by Oundle pupils.

**Community ITC Classes**  
Needham Building, Oundle  
School SciTec, Glapthorn Road, Oundle  
2.30pm-4pm

**Allegra Singers – Three-part ladies choir**  
Music room at Sports Pavilion, Islip  
7.30-9.30pm, £3 per session  
Veronica 01832 732611/  
07753 472225

**1st Wednesday of the month Raunds Ladies Group**  
The Saxon Hall, Raunds  
8pm-10pm, Visitors £3.50

**1st & 3rd Wednesday of the month Thrapston Country Dancers**  
St Johns Ambulance Hall  
2pm-3.30pm  
G Hearnden 01933 622827/  
ghearnden@tiscali.co.uk

**2nd Wednesday of the month Coffee Morning**  
Raunds Methodist Church  
10am-12noon  
01933 383378

**2nd & 4th Wednesday 1of the month Northants Model Makers**  
Windmill Primary School, Raunds NN9 6LA  
Main meeting starts 7.30ish  
First couple of meetings free  
Bob Humpage 07960 054405/  
modelmaker@tiscali.co.uk

**NWR – linking lively minded women**  
Dovedale, 1 Herne Park, East Rd, Oundle  
7.30pm-7.45pm  
Phone Carol 01832 270061 for more info.

**3rd Wednesday of the month Wellingborough Flower Arrangement Society**  
St Mary's Church Hall, Knox Road, Wellingborough NN8 1HU  
7.30pm, £5  
Chairman 01933 222326/  
Secretary 01604 870275

**Higham and Rushden U3A**  
Pemberton Centre, Rushden  
2pm-4pm, £2 for visitors  
Membership Secretary  
01933 418653

**4th Wednesday of the month Rushden Pensioners Forum**  
St Peters Church Hall, Midland Road, Rushden  
2pm-4pm  
Mary Morby 01933 312476/  
e.m.m@btinternet.com

**Wednesday & Thursday Free Counselling**  
No.1 St. Osyth's Lane Oundle  
By appointment 0793 6015965

**Wednesday & Saturday East Northants Athletics Club – 'Getting Kids Into Athletics'**  
The Ferrers School, Higham Ferrers  
Wed 6-7pm, Sat 9-10am, £4 per session or Wed & Sat £7  
Graham Bufton 07788 698883/  
grahambufton.ena@gmail.com

**Every Thursday Rushden Folk Dance Club**  
St Mary's Church Hall, Rushden  
8-10pm, first visit free, £2 thereafter  
Val 01933 387327

**The Silver Fox Woodturning Club**  
Dale End Scout Headquarters, Croyland Rd, Wellingborough  
10am-1pm, £2 all members  
Secretary Mick Webb 01933 682517.

**Move to Health**  
No 1 St Osyth's Lane, Oundle  
2.15pm-3pm  
office@oundlebaptist.org.uk/  
01832 770010

**Thursday Drop-In**  
No 1 St Osyth's Lane, Oundle  
10am-2pm  
office@oundlebaptist.org.uk/  
01832 770010

**Enjoy Yoga**  
Whitefriars Infant School, Rushden  
7pm-8.30pm, £5 per session.  
Gill Hughes 01933 313494/  
Hughes-G17@sky.com

**Little Ducklings Pre-School Stay and Play 'Tea and Tots' Sessions**  
1.30pm-3pm, £1.50 per family.  
01832 358085

**Short Mat Bowls**  
Wymington Memorial Hall  
1.45pm-4pm, £2 admission  
Mrs Smith 01933 355960

**Every Thursday (term time) Music Makers**  
Titchmarsh Pavilion  
9.30am-10.15am, £4 per child, £2 for siblings  
Naomi Cooper on musicmakersnorthants@gmail.com

**Music Makers**  
Joan Strong Centre, Oundle  
11.15am-12noon, £4 per child, £2 for siblings  
Naomi Cooper on musicmakersnorthants@gmail.com

**Little Treasures Tots Group**  
St Laurence's Church, Stanwick  
9.30am-11am, donations to cover costs  
Nicki 01933 625658

**Music Makers**  
Stanwick Village Hall  
2pm-2.45pm, £4 per child, £2 for siblings  
Naomi Cooper on musicmakersnorthants@gmail.com

**Community Art Classes**  
Oundle School Art Department  
7.30pm-8.30pm, free classes for people with a physical or learning disability.

**Coffee/Tea and Biscuits in the Bede House**  
St Mary's Church, Higham Ferrers  
10am-12noon, no charge just a donation to cover costs.

**Adult & Child Swim Sessions**  
Oundle School Swimming Pool, Milton Road Oundle  
9.15-9.45am, booked in advance

as a block (£4.75 per lesson)  
01832 277208/277195

**3rd Thursday of the month Painting Class with Nick Baldwin**  
Chelveston Village Hall,  
10am-4pm, £17 per session  
Kathy Gyngeell 01933 389936

**Ise & Nene Valley Turners**  
Counties Community Centre, Hertford Rd, Kettering NN15 6LG  
7pm, members free, visitors £7  
Peter Bond 01933 741835/  
peterjbond@btinternet.com

**Thursday Market Day No.1 Cafe - Free Drop-In**  
No.1 St, Osyth's Lane  
10am-2pm  
01832 770011

**Every Friday Walk and Chat**  
Rushden Hall Park, under Flag Pole  
10am  
Sue McKay 07739 327022/  
sue.mckay@groundwotrk.org.uk

**Music Makers**  
Nene Centre, Thrapston  
12.45-1.30pm & 1.45-2.30pm,  
£4 per child, £2 for siblings  
Naomi Cooper 07815 293893/  
musicmakersnorthants@gmail.com

**Every Friday (term time) Over 60s FREE swim**  
Oundle School Swimming Pool, Milton Road, Oundle  
3pm-3.45pm  
01832 277208/277195

**Pre-School Swimming Lessons**  
Oundle School Swimming Pool, Milton Road, Oundle  
1.55-2.25pm & 2.30-3pm  
Booked in advance as a block (£6.75 per lesson)  
01832 277208/277195

**1st Friday of the month (Checking before travelling) Craft Cafe**  
Stanwick Lakes  
10.30am-1pm, modest charge for some materials – car park charges apply.  
01933 625522/  
www.stanwicklakes.org.uk

**Oundle Evergreen Club**  
2.30pm in the Victoria Hall for tea and cakes plus entertainment. Just turn up or ring 01832 273826 or 272340 for further details.

**3rd Friday of the month Raunds Tea Dance**  
Saxon Hall, Raunds  
2-4.15pm, £3 (50p for raffle)  
Mrs Wicks 01933 312623

**U3A Branch Meeting**  
The Plaza, Cosy Nook, Thrapston NN14 4PS  
10am-12noon, £2 (visitors), £1 (members) includes refreshments

**Former Carers Group**  
No 1 St Osyth's Lane, Oundle PE8 4BG  
2pm-3.30pm, free  
01832 770010 or office@oundlebaptist.org.uk  
Coffee, tea, cake, sharing memories, cares and concerns.

**3rd Friday of the month (Checking before travelling) Stanwick Stitchers**  
Stanwick Lakes  
10.30am, free – car park charges apply.  
01933 625522 or Pauline on 01933 229817/www.stanwicklakes.org.uk

**1st Saturday of the month Coffee Morning**  
St Mary's Church, Ringstead

10am-12noon  
01933 624262

**Thrapston Farmers' Market**  
Thrapston High Street  
9am-1pm  
www.thrapstonfarmersmarket.moonfruit.com

**2nd Saturday of the month (Same Saturday as Oundle Farmers' Market) Coffee 'n' Cakes**  
Oundle Methodist Church, Drummingwell Lane (behind the Talbot Hotel)  
10am-12noon  
John Hewitson 01832 272209

**2nd Saturday of the month WE Watch**  
Stanwick Lakes  
01933 625522/  
wewatchstanwick@hotmail.co.uk

**Oundle Farmers' Market**  
Market Place, Oundle  
8am-1.30pm  
Oundle Town Council  
01832 272055

**3rd Saturday of the month Phoenix Group**  
Stanwick Lakes  
01933 625522/  
wewatchstanwick@hotmail.co.uk

**Messy Church**  
Rushden Salvation Army, Church Street, Rushden  
4pm  
George Ellitson 01933 313106

**Last Saturday of the month except December Farmers' Market**  
Market Square, Higham Ferrers  
9am-1pm  
danielle@highamferrers-tc.gov.uk

**Every Sunday Morning Worship Rushden Parish Church**  
Wellingborough Road  
10.45am  
Alan 01933 355302

**Morning Church Service**  
Rushden Heritage Chapel Hall, Park Road, Rushden NN10 0RG  
10.30am

**Church Service**  
The Heritage Chapel and Halls, Park Road, Rushden NN10 0RW  
10.30am  
Cheryl 07969 603958/  
cheze49@gmail.com

**Ringstead Shared Church**  
10.30am  
Angela Davis 01933 622316 or rbc-rsc@angeladavis.net  
Service for All (Communion first Sunday each month) led by Revd Robert Shehane

**1st Sunday of the month Priceless – for young children and their families**  
St Laurence's Church, Stanwick  
9.30am-10.15am

**3rd Sunday of the month All Age Worship**  
St Laurence's Church, Stanwick  
9.30am

**Leisurely, Sociable Strolls**  
Pub start – if not lunching do not use pub car park  
10am for 10.30am start.  
Guests £2 or join for year £8  
secretary@northamptonshireshamblers.org.uk

**4th Sunday of the month (except December) King's Cliffe Heritage Centre**  
Bridge Street. (Hanging sign when we're open).  
Open 2pm-5pm





# furniture centre

stylish home furniture

**Visit our showroom**  
Monday to Saturday  
9am - 5pm  
Sunday  
10am - 4pm



**Malvern  
Electric  
Recliner**  
£749



**Belvedere  
Electric  
Recliner**  
£749



**Windsor  
Armchair**  
£275



**Barclay  
Recliner  
Armchair**  
From £369\*



**Cheltenham  
2 Seater  
Sofa**  
£499



**Blake Armchair**  
From £499\*

**Blake  
3 Seater  
Sofa**  
From £899\*



**\*Recliners  
available  
in manual  
and  
electric**



**T:** 01536 414121 **W:** [www.thefurniturecentre.com](http://www.thefurniturecentre.com) **E:** [sales@thefurniturecentre.com](mailto:sales@thefurniturecentre.com)



Save the  
**DATE!**

**Friday 2nd December**  
**10 am – 4pm**

# Christmas Charity Open Day

**nab**  
NORTHAMPTONSHIRE  
ASSOCIATION  
FOR THE BLIND

**Peter Crisp**  
Design Studio

[www.petercrisp.co.uk](http://www.petercrisp.co.uk)

Christmas Gifts  
Jewellery  
Handbags  
Stalls  
Scarves  
Homemade Cakes



Peter Crisp Design Studio, 25/27 Church St Rushden

01933 356424



# Family notices

Nene Valley News can help you make those important family announcements.



**Walker, Aaron/  
Hunt, Nicola**  
Married on April 2 2014,  
at St Andrews Church.  
The couple had their  
honeymoon in Paris.



Chloe Booth have a  
wonderful day.  
Love from Mummy, Daddy,  
Nanna & Grandad xxx

For help and information  
to place your notice please  
call **01522 513515** or visit  
**[www.nenevalleynews.co.uk](http://www.nenevalleynews.co.uk)**

## Nene Valley news Classifieds

Deadlines for all classifications: 5pm  
Monday prior to issue date. A complete  
version of our Terms and Conditions can be  
found online at [www.nenevalleynews.co.uk](http://www.nenevalleynews.co.uk).  
Pay by credit/debit card or cheque. All  
major credit/debit cards accepted. For help  
and information please call **01522 513515**  
or visit **[www.nenevalleynews.co.uk](http://www.nenevalleynews.co.uk)**



### ACCOUNTANCY

#### Jon Essam & Co Ltd

Chartered Accountants

- Self Assessment Tax Returns
- Limited Company services
- VAT & CIS Returns
- New Business Start Ups and advice
- Payroll & Auto-enrolment services
- Sage & Xero specialists
- Free initial consultation

Tel: **01832 730280** Fax: **01832 730281**  
info@essamca.co.uk [www.essamca.co.uk](http://www.essamca.co.uk)

23 Cottingham Way, Thrapston,  
Kettering, Northants, NN14 4PL

#### FAYREHAVEN ACCOUNTANCY SERVICES CHARTERED CERTIFIED ACCOUNTANTS

4c Stanwick Rd, Higham Ferrers, NN10 8JG  
Tel: 01933 312080 / Mobile: 07905730623  
E-Mail: [neil.perera@accamail.com](mailto:neil.perera@accamail.com) / [neil.perera777@gmail.com](mailto:neil.perera777@gmail.com)

Book Keeping & Accounts Preparation  
Self Assessment & CT returns

Please call me to discuss your business needs.  
Thanks - Neil Perera



### CARE HOMES

#### Rose Cottage Residential Care Home Woodford

For the elderly and dementia

We are a small care home with eight residents only.  
All rooms are single en-suite and ground floor.  
We provide respite care and day care.

Telephone **01832 735417**  
[www.rosecottagewoodford.co.uk](http://www.rosecottagewoodford.co.uk)

Follow us on Facebook



### DRAUGHTSMANSHIP



MUNRO  
DRAUGHTING Ltd.

LOCAL ENGINEERING CAD DRAUGHTING COMPANY

LAYERING STRUCTURES TO SUIT

PAPER DRAWINGS CONVERTED

ESTABLISHED 1998 [www.munrocad.co.uk](http://www.munrocad.co.uk)  
OVER 45 YEARS EXPERIENCE CONTACT: 079 2978 7139



### FOOD

**IRTHLINGBOROUGH**  
KEBAB, PIZZA & FRIED CHICKEN  
Since 2004  
PROUDLY SERVING DELICIOUS FOOD  
DOWNLOAD OUR NEW APP  
SEARCH IRTHLINGBOROUGH KEBAB IN YOUR APPS!  
[www.ikptakeaway.com](http://www.ikptakeaway.com) • 01933 655655



### HOME IMPROVEMENTS

**Ashby's Allsorts**  
Home Improvement & Handyman Services  
Free Estimates  
No Job Too Small  
Inside and Outside Work Undertaken  
Public Liability Insurance  
Quality Work at Competitive Prices  
Tel: **01832 771020**  
Mobile: **07584 673767**  
Email: [contact@ashbys-allsorts.co.uk](mailto:contact@ashbys-allsorts.co.uk)  
[www.ashbys-allsorts.co.uk](http://www.ashbys-allsorts.co.uk)  
Based in Thrapston, we service a radius of 30ish miles

### CONSERVATORIES

EG VICTORIAN 3500 BY 3500  
FULLY INSTALLED INCLUDING  
ALL BRICKWORK AND VAT

**£7250**

ALL OTHER DESIGNS AND SIZES AVAILABLE  
UNBEATABLE PRICES  
PHONE NICK ALLINGTON ON  
(01832) 734070  
[WWW.CONSERVATORIESBUILT.CO.UK](http://WWW.CONSERVATORIESBUILT.CO.UK)

**!!!GET PLASTERED!!!**  
For all your plastering needs.  
No job too small, no fuss, no nonsense!  
Reliable and trustworthy service  
at the best possible price.  
Call Steve for free, friendly  
advice or a free quote.  
07703 720138 • 01933 430051

### Simon Vale

Painter & Decorator

High quality • Competitive prices  
Free estimates

07568 587367 or 01933 228671



Chowns Mill  
IRTHLINGBOROUGH  
NN9 5QQ  
Behind 'The Old Mill'  
furniture warehouse  
Ballast • Type1 MOT • Gravel • Sand • Topsoil  
All aggregates available for delivery or collection  
We also sell firewood & cement!  
01933 628273 [www.clark-aggregates.co.uk](http://www.clark-aggregates.co.uk)

### Kevin Neil Chambers

RE-BOARD & SMOOTH CEILINGS  
PLASTERING - COVING - PATIOS  
GARDEN WALLS - FENCING - BLOCK PAVING  
NO JOB TOO SMALL  
01832 731087 OR 07713 890754  
RELIABLE, CLEAN AND FRIENDLY SERVICE  
[kevinchambers07@btinternet.com](mailto:kevinchambers07@btinternet.com)

**Jon Spencer**  
Technical Drawing  
Services  
Plans drawn for planning and  
building regulation applications  
**01933 316044**

### MP BUILDER

Home Improvements and Maintenance

Reliable, professional and trustworthy

Extensions • Bathrooms/Wetrooms • Plumbing • Kitchens  
UPVC Windows & Doors • Roofing & Guttering  
Painting & Decorating • Carpentry

Free Competitive Quotes

Tel: 01933 353508 • Mob: 07710 337071  
Email: [buildwithmp@gmail.com](mailto:buildwithmp@gmail.com) • Web: [www.mpbuilder.co.uk](http://www.mpbuilder.co.uk)

### ALAN TAYLOR

For your local plastering

Boarding, Covering, Rendering  
All aspects of plastering. Enquiries welcome.  
Call Alan for a free quotation or advice on  
**01933 430098 or 07977 926717**

### The WOODWORKS

Kitchen service

SPECIALISTS IN ALL ASPECTS OF KITCHEN REFURBISHMENT

Replacement Kitchen doors  
Worktops supplied & fitted  
Sinks, Taps & Appliances  
Wardrobes built & fitted  
Made to measure  
Bathroom furniture



Update your existing kitchen to give  
you stunning looks, optimised storage  
space and increased accessibility

[WWW.WOODWORKS-KITCHENS.CO.UK](http://WWW.WOODWORKS-KITCHENS.CO.UK) Call now for a free no obligation quote  
Family business est 1999 **01933 449239**

### Debbie Dawson & Son Interior Painters and Decorators

• Free estimates • Over 15 years experience  
Tel: 01832 274652 Mobile: 07779 393458

**10% OAP DISCOUNT**

### Kitchen Door Solutions

Replacement doors and kitchen refurbishment

Doors available in solid wood, painted and laminate finishes



**Iain Smith**  
Tel: 01933 311310 **SPECIALISTS**  
Mob: 07583 869741 **SINCE 1980**



### HOME SERVICES

Part P Registered **A.SEATON**  
**ELECTRICAL LTD**

- Rewires, fuse board replacements
- Fault finding, extra sockets & lights
- Testing, inspection & certification
- No job too small, free estimates given

Email: [seatonsparky@gmail.com](mailto:seatonsparky@gmail.com)  
T: 01933 778504 M: 07952 249885

### LADY TILER

WALLS AND FLOORS

Friendly advice. No job too big or too small.  
Please contact Karen

Tel: **01933 461295 / 07975 752580**

**COSTUME JEWELLERY AND  
ALL UNWANTED JEWELLERY  
BROKEN OR PERFECT BOUGHT.  
ALSO OLD WATCHES AND COINS.  
ANY QUANTITY. JILL WILDING 01832 737803.**

• uPVC Windows • uPVC doors •  
**THRAPSTON GLAZING**  
**& JOINERY WORKSHOP**  
Est 85  
FREE QUOTES  
FREE GENUINE ADVICE  
SUPPLIERS AND INSTALLERS OF  
QUALITY uPVC WINDOWS, DOORS  
AND CONSERVATORIES - WHITE,  
COLOURED AND WOODGRAINED  
FINISHES AVAILABLE  
WINDOWS • DOORS  
CONSERVATORIES  
UPVC and ALUMINIUM  
GLASS CUT TO SIZE  
WHILE YOU WAIT  
We have been repairing customers  
existing windows and doors for over  
15 years and this has become more  
and more popular. We now offer a  
dedicated, quality repair service with  
1000s of spare parts for all makes of  
windows and doors, including locks,  
hinges, handles, glass units, etc.  
SAME INSTALLATION TEAM  
FOR LAST 28 YEARS.  
All of this from a small local  
company offering a combined  
wealth of experience of over 150  
years from our small workforce  
of six skilled craftsmen in the  
window and door industry.  
UNIT 11, COTTINGHAM WAY, THRAPSTON  
**01832 734570** **FENSA**  
[www.thrapstonglazingandjoinery.co.uk](http://www.thrapstonglazingandjoinery.co.uk)  
[www.windowanddoorrepairs.co.uk](http://www.windowanddoorrepairs.co.uk)  
Quality Repairs To Windows & Doors



**Easyflow Plumbing**  
Plumbing & Heating Services

Bathroom Installations  
Heating Systems  
General Household Plumbing

Tel: 07840 254 025 or 01604 946896  
roberttradford77@gmail.com

YOUR LOCAL PROFESSIONAL  
HEATING AND PLUMBING  
ENGINEERS YOU CAN TRUST

**DC Heating**  
SAFE IN OUR HANDS

REPAIRS • SERVICING • INSTALLATIONS

Which? Trusted trader

10 YEAR GUARANTEE

Phone today for a free quotation on  
**Tel: 01933 392 719**  
[www.dcheatingengineers.co.uk](http://www.dcheatingengineers.co.uk)

**PGR**  
Plumbing & Heating  
Tel: 01933 698116  
24 Hr Emergency Service  
Email: [pgrplumbing@btinternet.com](mailto:pgrplumbing@btinternet.com)  
Web: [www.pgrplumbing.co.uk](http://www.pgrplumbing.co.uk)

Specialists in  
Gas Installations

Gas Servicing & Maintenance  
Landlords Gas Safety Certificates

Central Heating Powerflushing  
Household Plumbing & Drainage

**PLUMBER**  
All plumbing work undertaken - No call out charge

Toilet repairs - Dripping overflows - Leaks and bursts  
Garden taps installed - Tap repairs and replacements  
Radiators supplied and fitted

20 years' experience  
Call Tim 01832 358248 or 07957 550660

**CLEAR THE JUNK**  
The Rose Clearance Service

Full - Part - Single Items. Logs sold  
Fully Registered and Insured. Est 30 years.  
[www.rose-clearance-services.co.uk](http://www.rose-clearance-services.co.uk)  
Tel: 01933 317113 or 07761 248266

**CLARK COAL SUPPLIES**  
DELIVERED FREE TO RUSHDEN, HIGHAM FERRERS  
AND SURROUNDING VILLAGES

MINIMUM DELIVERY 5 BAGS  
CASH ON DELIVERY

TELEPHONE 01933 314742

**DONNO R G**  
TV/AERIAL SERVICES  
Est 1981

TV/DVD repairs, servicing at your home if possible.  
Full installation service available. Freesat and Freeview digital  
aerials supplied and installed from £80. All work guaranteed.  
No call out charge locally. Free estimates on repairs.

**Tel: 01933 356680**

**ENSIGN GAS ENGINEERS**  
GAS FIRES, GAS COOKERS  
INSTALLATION, SERVICE AND REPAIR

Recommended service agent for:  
Focal Point Fires, Superior Fires and Eco Fires

**NO CALL OUT CHARGE**  
**Tel: 01933 318327**

**POSITIVE ELECTRICAL & PLUMBING SERVICES**

PART P APPROVED ELECTRICAL CONTRACTOR  
RELIABLE & PROFESSIONAL  
NEW BUILDS, EXTENSIONS, REWIRES  
FUSE BOARD UPGRADES, SHOWERS & MORE  
ALSO FIRE ALARMS & EMERGENCY LIGHTING  
FOR A QUOTE OR ADVICE, CONTACT PAUL ON:

OFFICE: 01832 732881  
MOBILE: 07939 088246  
OR EMAIL: [postve@hotmail.com](mailto:postve@hotmail.com)

*Plumber — local & fast!*

**RGJ PLUMBING AND HEATING**

*Plumbing*

- Full bathroom installation (inc carpentry & tiling)
- Burst pipes & leaks
- Toilet repair/replace
- Taps, sinks repair/replace
- Showers repair/replace & pumps

*Heating*

- Full central heating installation
- Boiler servicing/breakdowns
- Landlord safety certificates
- Power flushing
- Radiators & valves
- Pumps & cylinders

No call-out charge!  
City & Guilds Qualified  
All work guaranteed

564016

01933 588005 or 07921 469471

## PUBLIC NOTICES

**NORTHAMPTONSHIRE COUNTY COUNCIL**  
**ROAD TRAFFIC REGULATION ACT 1984 - SECTION 14**

**THE NORTHAMPTONSHIRE COUNTY COUNCIL**  
**(GRETTON ROAD, HARRINGWORTH)**

**(TEMPORARY PROHIBITION OF THROUGH TRAFFIC) ORDER 2016**

NOTICE IS HEREBY GIVEN that Northamptonshire County Council intend, not less than seven days from the date of this Notice, to make an Order the effect of which will be to prohibit traffic from proceeding along that length of Gretton Road, Harringworth as set out below.

LENGTH OF ROAD TO WHICH RESTRICTION APPLIES: That length of Gretton Road, Harringworth from Netherfield Farm to parish boundary.

REASONS FOR RESTRICTION: The restriction is required for safety during repairs to bridge structure.

PERIOD OF CLOSURE: The proposed Order will come into effect on 14th December 2016 and will continue in force for a period of eighteen months. An application may be made for the approval of the Secretary of State for Transport for the Order to be extended if this proves necessary. However, the restriction specified will have effect only at such times and to such an extent as is indicated by the display of signs prescribed by the Traffic Signs Regulations and General Directions 2016.

EXPECTED DURATION: It is expected that the road will be restricted for one day.

ALTERNATIVE ROUTES: use Deene Road, Harringworth Road, Kirby Lane, Gretton Road, Corby Road, High Street and Harringworth Road.

Dated this 19th day of November 2016  
QUENTIN BAKER  
Director of Law & Governance  
PKG/T16/516

If you require any further information please contact Gary Thorp on 01604 883400.

**NORTHAMPTONSHIRE COUNTY COUNCIL**  
**ROAD TRAFFIC REGULATION ACT 1984 - SECTION 14**

**THE NORTHAMPTONSHIRE COUNTY COUNCIL**  
**(THE SYKE & HALL HILL, BRIGSTOCK)**

**(TEMPORARY PROHIBITION OF THROUGH TRAFFIC) ORDER 2016**

NOTICE IS HEREBY GIVEN that Northamptonshire County Council intend, not less than seven days from the date of this Notice, to make an Order the effect of which will be to prohibit traffic from proceeding along those lengths of The Syke and Hall Hill, Brigstock as specified in the Schedule below.

REASONS FOR RESTRICTION: The restriction is required for safety during upgrading of telegraph poles and conductors.

PERIOD OF CLOSURE: The proposed Order will come into effect on 6th December 2016 and will continue in force for a period of eighteen months. An application may be made for the approval of the Secretary of State for Transport for the Order to be extended if this proves necessary. However, the restriction specified will have effect only at such times and to such an extent as is indicated by the display of signs prescribed by the Traffic Signs Regulations and General Directions 2016.

EXPECTED DURATION: It is expected that the roads will be restricted for three days.

ALTERNATIVE ROUTES: use Stable Hill and Church Street.

Dated this 19th day of November 2016  
QUENTIN BAKER  
Director of Law & Governance  
PKG/T16/339

If you require any further information please contact Gary Thorp on 01604 883400.

**NORTHAMPTONSHIRE COUNTY COUNCIL**  
**ROAD TRAFFIC REGULATION ACT 1984 - SECTION 14**

**THE NORTHAMPTONSHIRE COUNTY COUNCIL**  
**(BACK LANE, BRIGSTOCK)**

**(TEMPORARY PROHIBITION OF THROUGH TRAFFIC) ORDER 2016**

NOTICE IS HEREBY GIVEN that Northamptonshire County Council have made an Order the effect of which is to prohibit traffic from proceeding along that length of Back Lane, Brigstock as set out below.

LENGTH OF ROAD TO WHICH RESTRICTION APPLIES: That length of Back Lane, Brigstock from the junction of Benefield Road to High Street.

REASONS FOR RESTRICTION: The restriction is required for safety during a gas connection.

PERIOD OF CLOSURE: The proposed Order will come into effect on 28th November 2016 and will continue in force for a period of eighteen months. An application may be made for the approval of the Secretary of State for Transport for the Order to be extended if this proves necessary. However, the restriction specified will have effect only at such times and to such an extent as is indicated by the display of signs prescribed by the Traffic Signs Regulations and General Directions 2016.

EXPECTED DURATION: It is expected that the road will be restricted for four days.

ALTERNATIVE ROUTES: Use Benefield Road and High Street.

Dated this 19th day of November 2016  
QUENTIN BAKER, Director of Law & Governance  
PKG/T16/412

If you require any further information please contact Gary Thorp on 01604 883400.

**REMOVALS**

**David Mallett**  
REMOVAL, STORAGE & GENERAL HAULAGE  
HOME AND ABROAD

For a **FREE** quotation call  
**Mob: 0788 996 8064**  
**Tel: 01832 731570**

Local Friendly Service

## SITUATIONS VACANT

**Get paid to deliver the newspaper**

Good rates of pay £££'s

Flexible hours (on allocated day)

Regular fortnightly work in Rushden and Oundle

Must be over 13 years

Telephone 0800 917 4124  
or visit [www.whistl.co.uk/careers](http://www.whistl.co.uk/careers)  
and see newspaper delivery

**whistl**  
doordrop media

**East Northamptonshire Council**

**DEMOCRATIC SERVICES ASSISTANT**

Salary £18,094 - £20,436 per annum (pro rata)  
Initially 12 months FTC - 22 hours 'per week'

We are looking for someone competent at organising meetings and taking minutes to provide administrative support at council meetings. You will need to be organised and have a positive 'can do' attitude. The role is offered on a part time basis, however flexibility is essential as the number of hours demanded each week will fluctuate.

For more information and/or to apply visit [www.east-northamptonshire.gov.uk/jobs](http://www.east-northamptonshire.gov.uk/jobs)

**Closing date: Noon on Wednesday 30th November 2016.**

Expected interview dates: Week commencing 12th December 2016.

If you'd like an informal discussion about this role please call Lindsay Tomlinson, Democratic and Electoral Services Manager, on 01832 742213.

**Customer Service and Business Support Assistant**

**KM**

KM Packaging is a highly successful private business in Oundle Northamptonshire – supplying flexible packaging to the International Food Processing Industry.

This is a challenging role involving Buying, Expediting, Customer Service and Business Support - you will require the ability to work within a team whilst employing significant levels of personal initiative; you will enjoy multi-tasking and be happy to accept responsibility for your performance.

If you have any of the above skills we would like to hear from you.

By developing intimate relationships with international suppliers and customers, you will help deliver an exemplary standard of customer service.

In addition to computer literacy, and a high level of numeracy, the successful candidate will possess excellent inter-personal and listening skills, and will demonstrate flexibility, integrity and a mature working style. An additional European language would be an advantage to support our growing European business.

If you work at KM we expect you to share our passion in making the business a success and you can expect us to be committed to providing you with the opportunities, development and support to enable your career to grow.

KM Packaging would also be interested to hear from recent Graduates wishing to commence a business career who, while not fulfilling some of the criteria above, are well educated, articulate, motivated and most importantly, are keen to learn.

To the right individual we will offer a highly competitive salary.

If you feel you could thrive within our dynamic and compact organisation, where skills are valued, then please forward your CV with a covering letter highlighting relevant experience to:

[recruitment@kmpack.co.uk](mailto:recruitment@kmpack.co.uk)

Closing date 18 December 2016

Mr Graham Holding, Commercial Director  
KM Packaging Services Ltd, 44 West Street, Oundle, Peterborough PE8 4EF

Our Values and Behaviours –  
Innovation: Passion: Trust: Ownership

**Huxlow Science College**  
Opening Doors to Brighter Futures

Finedon Road, Irthlingborough, NN9 5TY

**We are looking for a Clerk to Governors!**

FTE Salary £17,169 - £17,891 per annum.  
Actual Salary £7,937 - £8,271 per annum.  
20 hours a week/39 weeks per year  
(term time plus training days)  
HOURS NEGOTIABLE

Applications for flexible working / job share welcomed – including applications for either daytime or evening hours  
Must cover approx. 6 evening meetings (6.00pm onwards) per term

**We are looking for a Clerk to Governors to support our Governors in the execution of their duties.**

**Are you looking for a flexible, part-time role to fit around other commitments?**  
**Do you have experience of minute taking, arranging meetings, maintaining accurate records or Company Secretary Experience?**  
**Are you reliable, flexible and proactive?**  
**If so, we would like to hear from you!**

**More information and application forms at:**  
**[www.huxlow.northants.sch.uk/vacancies](http://www.huxlow.northants.sch.uk/vacancies)**  
**Tel: 01933 650496 ext 1229**  
**Email: [hr@huxlow.northants.sch.uk](mailto:hr@huxlow.northants.sch.uk)**  
**Closing date: 30 November 2016 at 12 noon**  
**Interviews: 08 December 2016**

*Huxlow Science College is committed to safeguarding & promoting the welfare of children & young people and expects all staff & volunteers to share this commitment. DBS, Reference, Identity, Criminal Record and Medical checks are essential for all posts at the College.*

*Huxlow are an Equal Opportunities employer and welcome applications from all members of the community.*



# Chess Corner

The night of Halloween was witness to a spooky event at Rushden Chess Club. Things were not looking too good when the devil turned up to spread his mischief! There was relief all round, though, when it turned out to be Kavish Raagavan dressed for the Halloween Blitz competition.

This was the inaugural Blitz competition and resulted from a suggestion by one of the juniors at the Annual General Meeting. In the end only six players turned up to play chess as some of the other juniors preferred to terrorise their local neighbourhoods with 'Trick & Treat' fun. The chess was fiercely contested with some of the players taking a while to get to grips with the time controls. In the end the competition was won by Shabnavee Jeffrey, who showed herself master of both chess and time. Her only defeat in six games was against Keziah Lesly, who is showing herself to be an accomplished player after only a very short time with the Club. Despite all his devilish endeavours, Kavish in the end came fourth but will undoubtedly take some consolation in winning the prize for best fancy dress.

## Halloween Blitz Results

1st Shabnavee Jeffrey	5 points
2nd Gershon Lesly	4 points
3rd Keziah Lesly	3½ points

## Northants SKL Division I Match

Rushden A travelled to Kettering to play against their A team. James Gardner was the

first to suffer at the hands of Kettering's finest in a rare trouncing after only 13 moves. James was not the only shell shocked A-teamer, with Hugh Murphy suffering defeat at the hands of Kettering's Peter Jaszkiwskyj.

With the top two boards annihilated hopes rested on Saj recovering his good form against the much higher graded David Walker. He created a reasonable position but not good enough to prevent David gaining a passed pawn advantage thus taking the game. With the match now lost it was left to Richard Ellis on board 5 to get a consolation victory against Chris Keech. Richard took a pawn advantage early on which Chris struggled to recover from; after much prevarication he didn't even make the first time control and gifted the game to Richard. On board 4 Alan Lewis (aka the Drawmeister) was engaged in a game of nip and tuck against Jonny Martin. Jonny gained a pawn advantage that Alan managed to recover after several moves. Both players created passed pawns and the resulting Queens were then subsequently captured leaving just the two Kings on the board.

## Monday 24th October

### Kettering A 3½ - 1½ Rushden A

Bd1: Peter Jaszkiwskyj (178)	1-0
Hugh Murphy (194)	
Bd2: Michael Meadows (165)	1-0
James Gardner (167)	
Bd3: David Walker (164)	1-0
Sajan Ganger (134)	

Bd4: Jonny Martin (161) ½ Alan Lewis (131)  
Bd5: Chris Keech (156) 0-1 Richard Ellis (129)

## Northants SKL Division II Matches

Rushden C played Oundle School at Rushden Bowling Club on Halloween. As it happened most of the treats ended up Rushden's way, starting off with a masterful display by Barbara Gray against a decidedly jaded William Caskey. On Board 2 Tom Murts fought his way to victory in a tight game against Thomas Caskey. The other Rushden win was once again delivered by Nagenthini (Nancy) Jeffrey on Board 5. All in all this was a convincing performance by Rushden C in securing their first victory of the season.

## Monday 31st October

### Rushden C 3 - 2 Oundle School

Bd1: James Wicks (39)	0-1	Sam Gallant (U)
Bd2: Tom Murts (60)	1-0	Thomas Caskey (U)
Bd3: Barbara Gray (U)	1-0	William Caskey (U)
Bd4: Eddie Francolini (39)	0-1	Jeremy Leong (U)
Bd5: Nagenthini Jeffrey (U)	1-0	Brandon Ingle (U)

Rushden B's journey to Northampton on All Hallows' Day proved to be a fruitful one, with the Saints looking down favourably on Rushden. They managed to secure draws on boards 1 & 2 with victories on the other 3 boards. Keith Bristow may have considered himself a little fortunate on Board 2 when his opponent accidentally moved the King instead of his Queen. In accordance with the rules Daniel Shaw was obliged to abide by his mistaken move which left his King stranded in



By Derrick Sims

mid-board. This enabled Keith to offer a draw which Daniel was relieved to accept.

## Tuesday 1st November

### Chess Mates C 1 - 4 Rushden B

Bd1: Shane Ashley (U)	½	Richard Ellis (129)
Bd2: Daniel Shaw (U)	½	Keith Bristow (113)
Bd3: Reg Tomalin (92)	0-1	Bob Ellam (108)
Bd4: Briony Tomkins (72)	0-1	Jeff Owen (105)
Bd5: Aneurin Tomkins (57)	0-1	Tom Murts (60)

Chess is a game for people of all abilities, disabilities, and lifestyles. Rushden Chess Club loves welcoming new members, so do come along to a meeting if you're interested in playing chess in a very friendly environment. The club opens most Mondays from 6pm for Junior players – for details please call the Club Secretary on 01933 625767, or visit the club website [www.rushdenchessclub.com](http://www.rushdenchessclub.com) and for the NCA (County Association) it's [www.norchess.lloydbunday.co.uk](http://www.norchess.lloydbunday.co.uk).

# TRADELL

(A trading name of Oundle Heritage Windows Ltd.)

## Why choosing a local family business is important, just see what our customers have to say!

"May we take this opportunity to thank you for your kind attention throughout this contract, and may we particularly extend our thanks and appreciation to Dave, Dale and John for their exemplary standards of courtesy, consideration and workmanship on site"  
Yours sincerely  
K.S



Windows,  
Doors,  
Conservatories  
in  
PVCu  
Timber  
Aluminium  
Steel

"We are very pleased with the windows and the installation team did an excellent job, they were very careful and cleaned up thoroughly afterwards."  
Best wishes  
T&H.H

Need more space but like where you live? Give yourself more living space by adding a conservatory, these can offer various uses and with the advancement of glass thermal qualities they no longer have to be a cold box!

Maybe you need somewhere to wine & dine family & friends, a playroom for the kids or just somewhere to relax and watch the world go by!

Give us a call now for a free quotation:

# 01832 275790

# TRADELL

(A trading name of Oundle Heritage Windows Ltd.)

Units 9 & 10 The Workshops, Barnwell Manor Estate, Armston Road, Barnwell, Peterborough PE8 5PL  
Fax: 01832 275786 [dweber@tradell.co.uk](mailto:dweber@tradell.co.uk)