

# Nene Valley

## news

Your local independent community newspaper for East Northamptonshire

**Telephone:**  
**01522 513515**

We want to hear from you,  
so please submit your  
news story or event at  
[www.nenevalleynews.co.uk](http://www.nenevalleynews.co.uk)

Inside...



**Legendary hip hop stars to headline local festival**

**Page 5**



**Swim in aid of WaterAid**

**Page 8**

### In Brief

#### Successful season

**T**hrapston Ladies FC have completed a Double this season winning the Northamptonshire Women's League and League Cup. The league Cup final was preceded by a minute's applause for Thrapston Junior Ben Walker who tragically passed away playing for his club and the players wore shirts bearing his name and number in his memory. The club welcomes any enquiries from potential new players aged 16 and above.

#### Motorcyclist injured

**A** motorcyclist sustained serious injuries during a collision on the A45 between Raunds and the A14 on Sunday, 28th May. The collision took place at about 3pm and involved the motorcyclist and two cars. The motorcyclist was taken to hospital with serious injuries. Nobody else was injured. Officers would like to speak to anyone who may have witnessed this collision or who may have any information regarding it, and are asked to call the Drivewatch Hotline on 0800 174615.

## Music in the Park 2017 at Barnwell Country Park, Oundle

The Friends of Barnwell Country Park are hosting another Brass Band Festival on Sunday 16th July. Starting at around 10.30am to early evening, Music in the Park is now bigger with five bands each playing a 50 minute selection of music from light to classical.

**L**ast year's Massed Bands performance is back and will close

the event. With five bands playing, the sound should be thrilling!

There is a new piece of music especially for the Massed Bands, composed



by a locally born rising star, Christian Overhead. This has been generously underwritten by Steve Driver. Steve said, "When I was asked to help I couldn't resist. I've always loved brass music. I'm proud to get involved." Christian's work will immortalise him. It's called Driver's Walk! Before it's played, Christian will say what it's like composing. Also, for those interested, there will be an "introduce the instruments" section.

The visiting bands are Raunds, Rushden, Stamford, Thrapston and Yarwell & Nassington. There will be activities for all ages: bungee, climbing

wall, BBQ, artisan stalls, face painting and plenty of liquid refreshment – with the welcome return of Digfield Ales as well as a Pimms tent to celebrate summer.

The Friends sincerely thank The Roe Group for committing to be a sponsor and Persimmon has generously joined in. This list will grow!

In keeping with the Friends' Access for All and Embracing Our Community, they have adopted this year Peterborough Special Olympics Swimming Group. PSOSG strives to create a better world by fostering the acceptance and inclusion of all people.

Follow events at the Park on: [www.facebook.com/pages/Barnwell-Country-Park](https://www.facebook.com/pages/Barnwell-Country-Park)

**Become a Friend of the Park**  
[www.barnwellcountryparkfriends.org.uk](http://www.barnwellcountryparkfriends.org.uk)  
[secretary@barnwellcountryparkfriends.org.uk](mailto:secretary@barnwellcountryparkfriends.org.uk)

**FIXED  
MONTHLY COSTS  
NO MORE THAN  
£50**

**STEVENSON**  
PROPERTY MANAGEMENT LTD  
*'Letting Made Simple'*

**NO  
VAT**

**LANDLORDS, ARE YOU FED UP  
WITH PAYING HIGH FEES?**

**Come and See Us in Higham Ferrers High Street**

**Telephone: 01933 426500**



Stevenson Property Management Ltd. 46 High Street, Higham Ferrers, Rushden, Northants, NN10 8BL





## Letters to the editor

If you would like to submit a letter to the editor please send it to [news@nenevalleynews.co.uk](mailto:news@nenevalleynews.co.uk) for consideration. The maximum word count is 200 words.

Dear Editor,  
Rushden Park is a disgrace. The paths are cracked and potentially dangerous while patches of grass have been turned into a muddy lump by heavy duty vehicles. But worst of all is the litter. Everywhere you look there are pizza cartons, empty crisp packets, squashed cigarettes, crumpled cans, sweet wrappers, used tissues and plastic bottles. Debris is scattered over what's left of the grass or dumped less than a few inches from the nearest bin.

Laziness may be one explanation for this

anti-social behaviour but there is another factor too: the failure to understand the nature and meaning of the term 'public space'.

So what's to be done? The council seem unconcerned about the matter. They are reluctant to erect signs reminding people to dispose of their assorted jumble in a bin because it will spoil the look of the park. That's right. To them litter is a more attractive feature than a container to put it in. Unbelievable. It makes you wonder why they don't take down those notices reminding dog owners to pick up after their pooch. One of the criteria for Green Flag status, which Rushden Park has mysteriously managed to retain, is 'a good level of management in all areas'. In the matter of refuse, it is failing miserably.

We owe it to each other, to our children and to nature herself.

## Genealogy jottings

All you need is a notebook, a pencil and computer. Yes? Not quite... There is nothing more infuriating than knowing that you have written something down about an ancestor called James Brown but it is somewhere in the middle of your notebook that has Smith, Jones, Abercrombie, Cowling, Webb and goodness knows what other names surrounding it. Handy hint: have a different notebook for each surname that you are researching. Okay, I know that it can end up as more notebooks than you can shake a stick at, but at least you will have a better idea of how to lay your hands on that important piece of information!

Do you work at the dining room table or do you have a dedicated area? Although tempting to leave paperwork out as you know just where you have got to when the starving spouse or children start clamouring for food, it really is best to clear it away – in an orderly manner, of course! It also saves sticky fingers handling documents and ruining them for ever.

Sources. It is so inviting that, once on

**By Jan Pearson**  
*Genealogy Specialists, Tracing Our Past, Discovering Our Genes (TOP DOG)*  
[www.genealogy-specialists.com](http://www.genealogy-specialists.com)

the trail of something or someone that you forget to note where you found that snippet of information. I must admit that, when I first started recording my family's history, I was not as diligent as I could have been. Oh how I regret that now! Don't just write "1871 census" but record the piece, folio and page numbers. That way, it will be easier to find the elusive ancestor in the years to come.

What do you do with all the stuff that you have in your notebooks? Transfer it to folders – ring-binders and plastic inserts is the easiest way. I have different colour folders for each branch of my family – the colours then are in different shades for each generation or two. But that's just how I work. You could try a card index system or even an electronic database, the latter making searching your records a lot easier. Just don't forget to make a back-up!

## Want to place an advertisement or submit an article?

If you wish to contribute or have any comments please email [news@nenevalleynews.co.uk](mailto:news@nenevalleynews.co.uk) or call 01522 513515. To advertise, call 01522 513515. Alternatively you can email [advertising@nenevalleynews.co.uk](mailto:advertising@nenevalleynews.co.uk)

If you are not receiving your copy of Nene Valley News, please email [distribution@km-media.co.uk](mailto:distribution@km-media.co.uk) or telephone 01522 513515.

If you would like to receive this publication as a download, Nene Valley News is available online as a pdf at [www.nenevalleynews.co.uk](http://www.nenevalleynews.co.uk).

You can also subscribe to Nene Valley News for £39 per annum.

Nene Valley News is produced by KM Media & Marketing, County House, 9 Checkpoint Court, Sadler Road, Lincoln, LN6 3PW.

### Copy dates for Nene Valley News

Publication date: Saturday 17th June  
Articles to the editor by: Wednesday 7th June

Publication date: Saturday 1st July  
Articles to the editor by: Wednesday 21st June



**KM Media & Marketing**  
Your partner in publishing  
ONLINE | IN PRINT | IN DIGITAL

## Editor's notes

By the time you read this, the general election will almost be upon us and you will have the opportunity to exercise your right to choose who is going to represent you in Parliament, hopefully for the next 5 years. Obviously, the results will impact a wide range of issues and, despite the more Presidential flavour which campaigning has brought to this election, the consequences will be felt at all levels of society. While choosing not to vote is also a democratic right, it hardly carries the same weight as a cross against the name of a candidate on a ballot paper; the likely 30 or 40% of the electorate who don't vote will be only an afterthought in the post-election debates. So do make the effort, get to the polling stations on 8th June and make a positive contribution to the election.

Perhaps because of

the Bank Holiday and the schools' half term break we have not exactly been inundated with copy for this edition. So, we start with a plea to get your news to us to help us keep your local communities up to date, or take the opportunity to let off steam, and perhaps encourage debate, about a perceived problem. One contributor has raised the question of rubbish being left in Rushden Park and we would welcome comment from the local Council about their views on how best to combat this problem.

The bridge over the Willow Brook at Fotheringhay was finally opened again last week bringing relief to local residents and businesses. Our thanks go to those who have joined our efforts to hasten the repairs, notably the local MP Tom Pursglove and the Chair of the County Council Heather Smith. Doubtless,

those of you living elsewhere in the district will be relieved at not having to endure our ongoing comments about the state of the repair work.

We welcome Councillor Colin Wright to the Chair of the District Council and look forward to receiving his comments about the Council's work and his own activities over the coming year. Our thanks go to the outgoing Chairman, Councillor Rupert Reichhold, for his contributions over the past year.

Finally, there is an opportunity to do your own good deed in this edition by enlisting with the Nene Valley Community Action group who are appealing for volunteers to help them with their "Befriending Service". Your contribution need be as little as 2 hours each week and all the necessary training is provided as well as travel expenses.

## The Foot Clinic at Images



128 Newton Road  
Rushden  
Northants

Rose Wesley  
MCFHP MAFHP

All aspects of foot healthcare including:

- Nail Cutting
- Corn Removal
- Ingrowing Toenails
- Hard Skin Removal
- Fungal Nail Treatment
- Verruca Treatment

Open  
Wednesday  
to Saturday

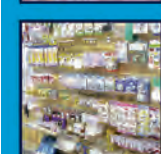
07854 514323  
01933 318902

## Cake Decorating Supplies

For Amateurs, Professionals and Enthusiasts alike



Cake Boards,  
Boxes, Dummies  
Cutters, Tools  
Edible Glitters  
Glues, Toppers  
Picks, Plungers  
Stencils, Pens  
Brushes, Icing  
Ribbons, Wires  
Decorations  
Accessories  
& much more.  
Come and have  
a browse!



From the basics - Sugar Paste, Cake Boxes and Boards to Cake Lace, Moulds and Cutters  
We have all the Baking and Cake Decorating supplies to complete your Wonderful Creations!

**SCS**  
packaging

Shop open 7am till 5pm Monday to Friday  
Orchard Road, Finedon, Northants NN9 5JG  
Tel 01933 681 681 [www.scspackaging.co.uk](http://www.scspackaging.co.uk)

46 Cartrill Street, Raunds, NN9 6ER  
**RAUNDS RAINBOW NURSERY SCHOOL**

**Free 15 hours or 11 hours per week**

Free Entitlement:

Aged 2+

11 hrs 52 weeks

15 hrs 38 weeks

Worth over £2000 per year

Reserve your place for next term

01933 624500

[www.raunds.org](http://www.raunds.org)

Come & visit us • Open 8 till 6 • Children from 2 years

**EAST MIDLANDS MUSIC**



**01733 788 733**

[info@eastmidlandsmusic.com](mailto:info@eastmidlandsmusic.com)  
[www.eastmidlandsmusic.com](http://www.eastmidlandsmusic.com)

The Stables, Rectory Farm Offices,  
Warmington PE8 6UT



# FutureDJs x Ferrers Academy

The Ferrers School was delighted to welcome FutureDJs - A revolutionary new DJ tutoring service to perform from a 'pop-up' DJ booth to excited students during their lunchtime on Friday 12th May.

The idea behind the event was to gauge the level of interest of students who would like to learn DJ and Music Production skills. These skills will be delivered by FutureDJs as a 12 module peripatetic course, something the school are very excited about getting on board with as they continue to extend their varied and exciting instrumental lesson opportunities to all students.

Future DJs, established by two sets of brothers, Shaun & Joe Marsden and Austen & Scott Smart aim to deliver a national program of service. Professional DJs Austen and Scott Smart have previously had Radio 1 'Essential New Tune', licensed music to Sony UK and performed at iconic nightclubs such as fabric (London), The Warehouse Project (Manchester) and Space (Ibiza).

Co-founder, Austen Smart, said, "With over



120 students at The Ferrers registering an interest to apply for the course on the day the response has been overwhelming but not surprising, this has been needed for a long time".

Mr Chris Gammon, subject lead for Music at The Ferrers stated, "As we now enter a digital age in all aspects of life, supporting students to explore new skills such as DJing and electronic music production is paramount in developing and nurturing their ability to tap into their personal expression, which grows self confidence and social skills. We need to encourage all students to embrace any interest they have in music whether it be with contemporary or modern tools for both creation and performance. FutureDJs provides this additional exposure to any student who wishes to learn a new skill".

Head of Performing Arts, Mrs Lindsey Atkins, said, "We are delighted to have welcomed the FutureDJs roadshow launch in line with AQA. We are very much looking forward to watching our students hone and develop their skills on the turntables - who knows what new talents will emerge from the school!"

If your child is enrolled at The Ferrers, or will be coming to the school in September, contact Mr Gammon for more information. Alternatively, find out more about DJing and/or music production lessons at [www.futuredjs.org](http://www.futuredjs.org)

## Benefield Summer Fête and Flower Festival

On Sunday 11th June 2017, the grounds of Benefield House and St Mary's Church will be holding their Summer Fête and Flower Festival.

The Summer Fête is filled with fun and enjoyment for all the family. There will be Children's Fancy Dress (at 2.15pm), many games to play together with a handsome barbeque, Pimms, beer, soft drinks and ice cream on the lawn of Benefield House. Furthermore, there are several stalls to visit selling a variety of home grown or cooked preserves, jams, cakes and more.

A raffle will be drawn at 4.30pm.

The Flower Festival is to be held in the adjacent St Mary's where you can admire our beautiful parish church, look at the flowers, and take cream teas in its enjoyable surroundings.

For further information contact Mary or Andrew Prosser on 01832 205055. All proceeds of the fete and festival will be in support of St Mary's Church.



For the **Best Value** selection of shoes in your area why not visit your local

## DB Factory Shoe Shop

**NEW RANGES NOW IN STOCK!**

We stock the **largest range of Men's and Ladies' boots, shoes and slippers, as well as Children's styles and wellies!**

**Opening times: Monday to Saturday 10am-5pm Sunday 10am-4pm**

Address: DB Shoes Ltd, 19-21 Irchester Road, Rushden, Northants, NN10 9XF

Online [www.dbfactoryshop.co.uk](http://www.dbfactoryshop.co.uk)

**FREE ROADSIDE PARKING**

### Wide Feet?

Then why not visit our specialist shoe fitting centre where our team of experienced shoe fitters will help you choose the style of footwear that is suitable for your needs!

Call **01933 410 305**

Online [www.widerfitshoes.co.uk](http://www.widerfitshoes.co.uk)

Opening times: Monday - Saturday 10am - 4pm

**Plus 10% OFF**

get an additional

When you bring this advert and quote code NVX1712F.

Offer valid in both shops until 1st September 2017

## WANTED HOUSEKEEPER/S

To assist two elderly residents in their Ringstead home

### Main duties will be:

Cooking lunch on a daily basis seven days a week.  
Preparing a light cold supper snack each day.  
Planning of menus and shopping for them (Internet help available).  
Laundry (no ironing) washing machine and tumble dryer available.  
Assisting with housework.

### Experience required:

Evidence of ability to cook a variety of different meals.  
Supporting elderly people in their home environment.  
Supporting a person with mild dementia.

### Requirement:

**Essential:** Permitted to work in England.  
References from previous employers/agency.  
**Desirable:** A valid Disclosure and Barring Certification.

**Working hours:** Normally 10am to 2pm.  
28 hours per week (minimum) with possibility of mutually agreed extra hours from time to time.

**Rate of pay:** £9 per hour.

Suitable for two people sharing to cover sickness or vacation.

If you think this might be of interest to you, please give us a call on **01933 460303** preferably in the afternoon

**sunseeker WINDOW SYSTEMS**

Factory & showroom at 72-84 Station Road, Burton Latimer, NN15 5NX

Call today to arrange your FREE no obligation survey

**(01536) 722316**

Email: [laura@sunseekerwindows.co.uk](mailto:laura@sunseekerwindows.co.uk)

**FENSA** Registered Company

- Manufacturer & installer of windows, doors and conservatories
- Over 25 years local manufacturing and repair experience
- Complete repair service available on all locks, handles, hinges, gaskets, and adjustments along with replacement double glazed units.
- Full range of coloured profiles
- Composite doors
- Aluminium Bi-Folds
- French doors & Patio doors

## NENE & WELLAND CALLCONNECT

Serving Oundle, Peterborough, Stamford, Thrapston and surrounding villages

CallConnect is a unique bus service whose timetable is not fixed but responds to passenger requests. The service runs from 7am - 7pm Monday - Saturday. Routes are different each day depending on the bookings made by passengers. Journey requests can be made by telephone or online. The service is designed to improve transport links in the Oundle & Thrapston areas.

For more information & to book a journey: **0345 2638153**

[www.wellandcallconnect.co.uk](http://www.wellandcallconnect.co.uk)

Follow us on Twitter @CallConnectbus



# Northamptonshire County Schools Challenge 2017: Huxlow prepare for semi-finals



The Northamptonshire County Schools Challenge (NCSC) is an annual competition in which students across the county are asked to develop an enterprising idea which will help other young people who are struggling with a specific social issue. This year's theme is Drugs and Psychoactive Substances.

All Year 8 students have participated. Each form voted for a winning group to represent them in the Huxlow final,

held on Wednesday 24th May 2017. The groups pitched their ideas in a "Dragon's Den" style to a judging panel and their peers. The entries were of an outstanding quality and were skilfully presented. Congratulations to the winning group, 8LHB, who will also be assisted by the runners-up in refining their presentation over the coming weeks. The group will represent the College at the semi-finals to be held in June, and hopefully progress to the finals as last year's Huxlow team did.

## Families invited to get on their bikes for the Tour Ride Northamptonshire!

The OVO Energy Tour Ride Northamptonshire returns to the county this summer and families are being invited to sign up for the 10-mile fun ride.

The Tour Ride is a community cycling event inspired by the OVO Energy Women's Tour race, which returns to Northamptonshire next month for the fourth consecutive year.

The Tour Ride, the official sportive of the race, takes place on Sunday 18th June and aims to encourage more people to get active and take up cycling.

Offering a choice of 10, 40 and 80-mile routes, the Tour Ride has been created with both amateur cyclists and families in mind. The gentle 10-mile fun ride is ideal for families, starting and finishing at Delapre Abbey and taking riders alongside the canal path on quiet, marshalled and well-signposted cycle lanes.

The ride is suitable for riders aged seven and above, or five and above on a trailer or a tag along, and costs £5 per adult to enter and children under 16 ride for free.

Cllr Matthew Golby, deputy leader of Northamptonshire County Council, which is responsible for bringing the OVO Energy Women's Tour and Tour Ride back to the county this year, said: "The Tour Ride is a fantastic, fun event for both families and more committed cyclists.

"I took part with my own family last year and it was a great event. The atmosphere was incredible and the fun ride route was very well marshalled and signposted, making it safe and easy to follow for young and inexperienced riders.

"I shall certainly be signing up again this year and can't wait to get back on the saddle!"

To enter, visit [www.tourride.co.uk](http://www.tourride.co.uk) or just come along on the day.

## Volunteer Befrienders needed

Nene Valley Community Action is appealing for volunteers to help them with their "Befriending Service". NVCA are looking for people to visit elderly and frail adults in their own homes who may be isolated from the community.

Volunteers would need to have a sympathetic ear and a caring nature, be able to maintain client confidentiality and

be reliable. The minimum commitment would be approximately 2 hours per week. NVCA would provide initial training for the volunteer, ongoing back up and travel expenses.

Anyone who is interested in supporting this much needed programme should contact NVCA to arrange a one to one informal chat about the opportunity by telephoning 01933 396382/313526.

## THE COURTYARD RESTAURANT AND BAR

The Courtyard Restaurant at The Stanwick Hotel is open to residents and non-residents alike. Our specialty is helping cater for celebrations such as birthdays, wedding anniversaries, leaving parties and much, much more.

The Restaurant gains its name from the two courtyards that the hotel is built around and overlooks our beautiful gardens in its conservatory setting.

You are sure to get a warm welcome in the bar, with a range

of spirits, whiskeys and personally selected wines and premium beers & lager. The Bar is also open to non residents and residents alike.

All our food is prepared using fresh and where possible local ingredients, which are freshly cooked to order with skills from our talented team of Chefs.

**RESTAURANT OPENING HOURS**  
Monday-Thursday: 12-2pm, 6pm-9pm  
Friday: 12pm-2pm, 7pm-9:30pm  
Saturday: 7pm-9:30pm  
Sunday: 12pm-6pm  
Bar: Open 12pm til late, 7 days a week



The Stanwick Hotel, West Street, Stanwick, Northamptonshire NN9 6QY

To find out more or to make a booking, please call 01933 622233

Email: [bookings@stanwickhotel.co.uk](mailto:bookings@stanwickhotel.co.uk) • [www.thestanwickhotel.co.uk](http://www.thestanwickhotel.co.uk)



# Pisces

## Take away and restaurant

Cod, chips and mushy peas are **94.3% fat free**.  
Light bite cod available at all times for only £3.25.

Light bite options to include cod, home-made fishcakes and 100% chicken breast nuggets. Lunch time offers on daily.

**Summer salads now available.**  
**Good food and service is our priority.**

**Open: Tuesday-Saturday**





**Come and visit us at 21 High Street, Thrapston, Northants NN14 4JJ**  
**01832 733303 • facebook.com/piscesthrapston**

## Spotlight on Good Food

### The Stanwick Hotel

The Courtyard Restaurant at The Stanwick Hotel is open to residents and non-residents alike. Their specialty is helping cater for celebrations such as birthdays, wedding anniversaries, leaving parties and much, much more.

The Restaurant gains its name from the two courtyards that the hotel is built around and overlooks our beautiful gardens in its conservatory setting.

All food is prepared using fresh and where possible local ingredients, which are freshly cooked to order with skills from the talented team of Chefs.

The restaurant takes

pride in the quality and precision provided to customers ensuring that the food is presented, and more importantly tastes, a way that make the customers taste buds come alive.

You are sure to get a warm welcome in the bar, with a range of spirits, whiskeys and personally selected wines and premium beers & lager.

### Pisces Fish & Chips

With healthy fish and chips, sourced responsibly from fishing grounds, and many homemade items, Pisces is the county's Number One Fish & Chip Shop. This accolade was awarded by the Governing body,

Seafish. They put their success down to the high passion for the industry.

Owner, Adam Smith says: "We only use the highest quality foods, and offer many homemade items, so you know our food is as fresh as it gets. We are very health conscious too, our regular fish, chips and peas is 94.35% fat free.

"We also offer a dine-in service, so come along and try our freshly cooked fish straight from the pan.

"Our customers love our food and come back time and time again, often bringing friends and relatives with them. What are you waiting for? Come and try the best fish and chips in the county!"





## New Chairman elected at East Northamptonshire Council

East Northamptonshire Council (ENC) welcomed a new Chairman for the next Civic Year.

On 17th May Cllr Colin Wright, a district councillor for Rushden, took over from outgoing chairman, Cllr Rupert Reichhold, at the Annual Meeting of the Council for 2017/18.

Cllr Wright has been a district councillor since 2002 and is currently the Ward Member for Rushden Pemberton Ward.

He is looking forward to representing the district and the work of the Council at events over the next 12 months, meeting as many people as possible from the towns and parishes in East Northants. His consort is his wife, Mrs Linda Wright.

Cllr Wright said: "I am pleased to have been nominated and elected Chairman for the forthcoming year and want to

thank Members for their confidence and support.

"My aim is for people to see me as the representative of ENC, representing those that work within the organisation as being contactable and committed to enhancing the lives of those that live within the district.

"East Northamptonshire is the hidden dream and I want all residents to know more about what it has to offer and I hope my time as Chairman will achieve this."

Events already planned for the year include a hog roast and an evening with an ABBA tribute band to raise money for the Chairman's charities - the Swivel Club and Dogs Trust.

District councillor for Thrapston Lakes Ward, Cllr Councillor Wendy Brackenbury, was named as Vice-Chairman for this year.

To find out what the Chairman is up to, please visit [www.east-northamptonshire.gov.uk/chairmansdiary](http://www.east-northamptonshire.gov.uk/chairmansdiary) and/or follow him on Twitter @ENCChairman

## Oundle Town v Rushden & Diamonds Walking Football

Rushden & Diamonds WF are pleased to announce they will be playing at Oundle Town on the evening of 23rd June.

Walking Football has become a major sport in the UK in recent years. Over 50's have found the sport accessible and a great way of enjoying both the game and the social interaction.

R&DWF with the support of Rushden &

Diamonds Football Club, have become a well established team over the past 3 years, with 30+ players registered. Oundle Town are in their formative stages having only commenced playing early this year. R&D have a number of invite games planned through the summer against Bedford, Stamford, Bedworth and now Oundle.

'We see these games as a great way of reaching

out to the Community and attracting interest from others interested in playing Walking Football' says Mark Rogers, Committee member at R&DWF, 'the sport is open to all over 50's, and is the perfect excuse for fat old men to get off the settee. It would be great to see new faces at Oundle on the 23rd'

The game is scheduled to kick off at 6pm on the 23rd.

## Legendary hip hop stars to headline local festival

Hip Hop act The Sugarhill Gang will be joined by Reverend and the Makers and Stereo MCs at the Green Meadows Festival in August.

The Sugarhill Gang penned the first Hip-hop hit Rappers Delight and they will be joined on stage by rapper Melle Mel who wrote two of the most influential records of the 1980s – White Lines and The Message.

The festival takes place near Elton between 11-13th August and features a wide range of live acts and DJs across four stages including Radio 1 legend Danny Rampling and million selling act The Stanton Warriors.

During the festival there are plenty of free activities for children including animal encounters with Bugtopia The Zoo! and live science experiments as well as inflatables and circus skills.

Hungry festival goers can enjoy award winning food and there are also cocktail and real ale bars.

Festival founder Ollie Sharp said: "We are delighted to have secured the best line up in the festival's history. We are really excited to have The

Sugarhill Gang and Melle Mel – it is a chance to see artists who changed the history of music close up.

"The event is going from strength to strength after last year's sell out and as we say – kids play in the day – adults at night!"

The festival has been held annually since 2012 and supports Teenage Cancer Trust. Weekend tickets start at £10 for kids and £70 for adults. For more information visit [www.greenmeadowsfestival.org](http://www.greenmeadowsfestival.org).

For press passes, further interviews with artists etc please contact [ollie@greenmeadowsfestival.org](mailto:ollie@greenmeadowsfestival.org) 07904099757

## Have you been suffering from SPORTS INJURIES OR BACK PAIN? It's time to do something about it and get back to your sport!

Before I went to The Ashgrove Clinic I was unable to do any physical exercise at all. I was struggling to walk more than 100 yards without spasms. I'm now back in training: they fix me when I'm broken!

I Anderton (Boxer)

”

BOOK YOUR  
FREE  
20 MINUTE  
CONSULTATION  
TODAY



### Take action now...

You can get a **FREE consultation** (normally £45) with The Ashgrove Clinic and make the first step to a pain-free life today!

Your 20 minute consultation with one of our friendly osteopaths will...

- Offer bespoke advice
- Give you 1:1 individual analysis on how to improve

And we'll get started right away.

So, if you're in pain, if you're not competing as well as you should be, if an old injury is nagging at you, or if you keep pulling a muscle, make the first step to your recovery today.

At The Ashgrove Clinic we work to find the cause of your discomfort, **treating your injury at the source, not just the symptoms**. To fix your injury we have specialists in sports therapy, osteopathy, massage, gait analysis, ultrasound, kinesio taping, TENS, acupuncture, cupping, rehab exercises and myofascial work.

Call 01933 328020  
now to book your  
FREE consultation!

The  
**Ashgrove**  
Clinic

[www.ashgrovehealth.co.uk](http://www.ashgrovehealth.co.uk) | 01933 328 020

13 Lancaster Street, Higham Ferrers, Rushden, Northamptonshire, NN10 8HY





East  
Northamptonshire  
Council

## Notice of planning applications received

Notice is given that the following applications have been received together with the last date for making representations:

### Apethorpe

**17/00936/FUL (17/06/2017) (Info)** Detached timber barn at Bluefield Farm Nassington Rd Apethorpe PE8 5DW

### Benefield

**17/01027/FUL (24/06/2017) (LB/CA)** Single storey side extension to provide new toilets and disabled toilet facilities and ramped entrance, additional hall space and internal remodelling of existing hall to provide better changing, kitchen and bar facilities for the village. Creation of associated parking and play area. At Benefield Cricket Club Main St Upper Benefield PE8 5AN

### Glapthorn

**17/00929/FUL (17/06/2017) (Info)** Erection of new retirement dormer bungalow within applicants garden for applicant at Highfield Lodge Main St Glapthorn PE8 5BT

### Great Addington

**17/00958/FUL (17/06/2017) (Info)** Proposed single storey rear extension incorporating flat roof, plus Juliet balcony to first floor bedroom at The Spinneys Woodford Rd Great Addington NN14 4BS

### Hargrave

**17/00992/VAR (17/06/2017) (Info)** Variation of condition 7 - to allow integrated solar pv panels on south side of barn and two new windows pursuant to application number 16/02254/FUL - Conversion of existing stone barn into two accommodation units to provide Bed and Breakfast accommodation and erection of a new four bay detached timber framed garage with games room above at Top Farm Church St Hargrave NN9 6BW

### Higham Ferrers

**17/00953/ADV (24/06/2017) (LB/CA)** 1 X fascia only logo illuminated 1 X internally illuminated projector 2 X non illuminated wall mounted aluminium panels at 26 High St Higham Ferrers NN10

### Irthlingborough

**17/00836/FUL (17/06/2017) (Info)** New build dormer bungalow including access at land adjacent 11 Manor Drive Irthlingborough

**17/00865/FUL (17/06/2017) (Info)** Build new store to side of property forward of existing garage. Convert existing garage into new kitchen. Build open porch and re position front door with two side windows and clad in stone. Change two front downstairs windows to bow at 9 Manor Drive Irthlingborough

### Little Addington

**17/00946/FUL (17/06/2017) (Info)** Retrospective: Change of use of land to residential garden at The Beeches High St Little Addington NN14 4BD

### Oundle

**17/00912/FUL and 17/00913/LBC (24/06/2017) (LB/CA)(LBRegs)** Removal of old conservatory from rear wall of the house and re-facing of that wall together with installation of a casement door at 51 North St Oundle  
**17/00918/FUL (17/06/2017) (Info)** Removal of existing single storey garage to side of the existing house and replace with two storey extension. New stand alone single storey garage to front of house at 20 Ashton Rd Oundle PE8 4HP

**17/00955/FUL (17/06/2017) (Info)** Single storey extension to the side and rear of dwelling and conversion of garage to Study/Bedroom at 10 Millfields Oundle PE8 4LF

**17/00974/FUL (17/06/2017) (Info)** Erection of gates to driveway at 4 Riverside Close Oundle PE8

**17/00975/FUL (17/06/2017) (Info)** Proposed demolition of existing single storey extension and erection of two storey rear extension at 62 Glapthorn Rd Oundle PE8 4PT  
**17/00988/LBC (24/06/2017) (LBRegs)** Replacement single door and adjacent windows on ground floor rear elevation of property at 44 West St Oundle PE8 4EF

### Pilton

**17/00940/FUL (17/06/2017) (Info)** Single storey rear extension at 1 Pilton Lodge Cottages Lodge Rd Pilton PE8 5TD

### Raunds

**17/00906/FUL (17/06/2017) (Info)** To demolish hall and garage and construct a bungalow at St John

Ambulance Hall High St Raunds NN9 6HT

**17/00921/FUL (17/06/2017) (Info)** Demolition of utility room, construction of new kitchen and utility room, roof alterations at Bilsdale Chelveston Rd Raunds NN9 6DA

### Rushden

**17/00616/FUL (24/06/2017) (Art8)** Part demolition part retention and conversion of former print works with additional new houses and flats to create fourteen new residential dwellings at Printing Workshop Midland Rd Rushden NN10 9UJ

**17/00873/FUL (24/06/2017) (LB/CA)** Change of use from shop (A1) to restaurant (A3) and new signage at 110 High Street Rushden NN10 0PQ

**17/00938/FUL (17/06/2017) (Info)** Two storey side extension at 4 Kenilworth Close Rushden NN10 0QH

**17/00952/ADV (17/06/2017) (Info)** 9No fascia signs consisting of 1No illuminated rectangular sign and eight No round signs for the purpose of advertising a business at 49 Duck St Rushden NN10 9YD

**17/00954/FUL (17/06/2017) (Info)** Proposed double garage at 184 Avenue Rd Rushden NN10 0SW

**17/00956/FUL (17/06/2017) (Info)** The installation of 2 no. two storey Portakabin buildings for use as office facilities at Quotient Bioresearch (Rushden) Ltd Pegasus Way Rushden NN10 6ER

**17/00986/ADV (17/06/2017) (Info)** Internally illuminated fascia sign at Unit 1D South Terrace Rushden Lakes Rushden NN10 6FS

**17/00997/ADV (17/06/2017) (Info)** 1 off single sided illuminated fascia sign at Unit 1 Northwalk Rushden Lakes Rushden NN10 6FG

**17/01001/FUL (17/06/2017) (Info)** Single storey rear extension and raised decking at 2 Yelden Close Rushden

### Stanwick

**17/00964/FUL (17/06/2017) (Info)** Conversion of garage to wet room, remove garage door, install window with brick surround, tile floor and walls, install shower, disabled toilet and basin at 16 Courtman Rd Stanwick NN9 6TG

### Thorpe Achurch

**17/00933/FUL (17/06/2017) (Info)** Proposed triple garage and games room over at Fourways Cottage Oundle Rd Lilford PE8 5SG

### Thrapston

**17/00999/FUL (17/06/2017) (Info)** Removal of existing wall acting as boundary and replacing it with new wall and railings to enclose property at 31 Springfield Avenue Thrapston NN14 4TL

**The reason for applications being advertised is as follows:**

**Part3 - Town and Country Planning (General Development Procedure) Order 2015.**

**Part16 - Town and Country Planning (General Development Procedure) Order 2015.**

**Info - Non-statutory - included for information only.**

**LB/CA - Planning (Listed Buildings and Conservation Areas Act 1990.**

**LBRegs - Planning (Listed Buildings and Conservation Areas) Regulations 1990.**

**Paul Bland, Head Of Planning Services  
Dated 3 June 2017**

Consultation deadlines will differ for each application. Please go to [www.east-northamptonshire.gov.uk/planningapplications](http://www.east-northamptonshire.gov.uk/planningapplications) for details.

# From the Chairman

**I'm delighted to have been nominated and elected as the Chairman of East Northamptonshire Council for 2017/18 and am really looking forward to getting out in the district and meeting as many of you as possible.**

I've been a councillor since 2000 starting with Rushden Town Council and being elected to ENC in 2002 where I'm Ward Member for Rushden Pemberton Ward.

As well as my council duties, I'm also Chairman of the Swivel Club Charity which helps local people by fundraising with live music and many top groups performing on a monthly basis. Find out more at [www.swivelclub.org.uk](http://www.swivelclub.org.uk) and come along to one of our events, you'll have a great time.

I love talking to people and I want to meet as many of you as I can within the district, from Rushden to Easton on the Hill, Oundle to Stanwick, Raunds to Kings Cliffe and all the parishes in between. If you're planning a public or community event and would like me to attend, please drop me a line with some details and we'll see what can be arranged:

- twitter @ENCChairman
- email [chairman@east-northamptonshire.gov.uk](mailto:chairman@east-northamptonshire.gov.uk)
- phone 01832 742198
- write to ENC Chairman,

Cedar Drive, Thrapston, NN14 4LZ

I also want to meet those of you who have dogs because one of my chosen charities for the year (as well as the Swivel Club) is The Dogs Trust. So I look forward to meeting you and your best friend as I visit various parts of the district. I'd also love you to tweet photos of you and your pooch to my new twitter account @ENCChairman. I'm new to social media so do bear with me but I understand that many of you love it

and I'm really quite excited about seeing your dog photos appear on my timeline. And do share any stores about dogs that have gone beyond the duty of being man's best friend as The Dog's Trust would love to hear them too.

Nene Valley News remains important to the people of East Northamptonshire and I plan to share my adventures with you via a regular column (subject to the editor's approval). I hope you enjoy reading about my visits and the people I have met. My aim is for people to see me as the representative of East Northamptonshire Council and to advocate the work we do as well as feed back any concerns the public may have so please do



come and talk to me.

I'm very proud of our district and believe that East Northamptonshire is the hidden dream. I will do all I can to promote the

district and the special qualities it has to offer and I look forward to sharing my year with you all.

*ENC Chairman  
Cllr Colin Wright*



# Titchmarsh Church of England Primary School Ofsted Report

The pupils, staff and governors of Titchmarsh Church of England Primary School are delighted to announce the outcome of their recent Ofsted inspection on March 28th 2017.

This school continues to be good'. The report outlines the successes of the school in maintaining the 'good quality of education' since its last inspection five years ago, stating that 'parents and staff value the school's positive and encouraging culture. Their pride, in being part of the Titchmarsh Primary School community, is striking.'

The report also looks at the leadership of the school, saying 'high ambition characterises leadership at all levels' with the new Executive Headteacher, Mr Ed Carlyle 'wisely continuing to work through the leadership and management systems that have served the school

successfully in recent years' whilst using his 'own skills and experience to bring fresh impetus to the school's drive for continuous improvement' and noting 'the rigour with which you check on the effectiveness of additional support being provided for pupils'.

The report notes the 'range of expertise' of the governing body and the impact of their contribution was noted as 'governors are scrupulous in carrying out their responsibilities' and have 'an accurate understanding of (the school's) strengths and relative weaknesses.' Safeguarding was also highlighted as being effective.

Titchmarsh's close links

with Warmington School were described as being 'an important factor in improving the quality of leadership and teaching

throughout Titchmarsh' and that the school 'values the opportunities the Unity provides for sharing best practice.'

Mr Carlyle paid tribute to the staff and pupils at the school – 'The staff at Titchmarsh are a highly-skilled and dedicated team who always strive for the very best for our children and I am delighted that the report reflects their hard work so clearly. Our pupils made the inspector very welcome and

were keen to share how much they love their school with him and he was clearly impressed by their enthusiasm and love of learning.'

The school's report is now available on the Ofsted website and its next Open Week for prospective parents is the week commencing June 26th.

## Rangers Cadets have exciting time

The Ranger Cadets entertained the Mayor of Rushden, Councillor Tracey Smith and Consort Councillor Paul Harley, at their Open evening at Highfield Community Baptist Hall, Rushden, on the evening of Thursday 4th May. The Mayor was an immediate hit when the Rangers learnt the Mayor was a former cadet and knew how to wear a beret properly!

This event was followed on Saturday 6th May, by a tour of Northamptonshire Police Control Room at Wootton

Hall and in the afternoon, by a visit to Wellingborough Museum for the WW1 Trench Experience, when they were joined by cadets from Training Ship Collingwood, based in Raunds. Future events include a coach trip to HMS Belfast in July and a weekend camp in September.

The Ranger Cadets meet each Thursday evening at Rushden's Highfield Road Community Baptist

Hall NN9 9QD, from 6.30-8.30pm. Membership is open to all young people, Juniors 6-8 years, Cadets 9-17 years.

The Rangers are an independent tri-service cadet corps offering adventure training, sailing, camping, Olympic style air rifle target, plus sport and games and they are just about to form their own marching band too.

Further details are available from 01933 412099 or email: [Rangercadetsnorthants@gmail.com](mailto:Rangercadetsnorthants@gmail.com)

Quality petrol  
lawnmowers from £169

**Mowerman**  
GARDEN MACHINES  
DOMESTIC & COMMERCIAL

SERVICE & REPAIR

INHOUSE WORKSHOP

SUPPLIERS OF STIHL, HAYTER,  
JOHN DEERE, WOLF TOOLS  
AND MUCH MORE

PARTS AVAILABLE

HIRE EQUIPMENT ALSO AVAILABLE



**MOWERMAN GARDEN MACHINES LTD**  
UNIT 120 • LEYLAND TRADING ESTATE  
IRTHLINGBOROUGH ROAD WELLINGBOROUGH  
NORTHAMPTONSHIRE NN8 1RT  
TELEPHONE 01933 274410  
[enquiries@mowermanlawnservices.co.uk](mailto:enquiries@mowermanlawnservices.co.uk)



• uPVC Windows • uPVC doors •

**THRAPSTON GLAZING**  
Est 85 & JOINERY WORKSHOP

FREE  
QUOTES

FREE  
GENUINE  
ADVICE

SUPPLIERS AND INSTALLERS OF  
QUALITY uPVC WINDOWS, DOORS  
AND CONSERVATORIES – WHITE,  
COLOURED AND WOODGRAINED  
FINISHES AVAILABLE

**WINDOWS • DOORS  
CONSERVATORIES  
UPVC and ALUMINIUM  
GLASS CUT TO SIZE  
WHILE YOU WAIT**

We have been repairing customers  
existing windows and doors for over  
15 years and this has become more  
and more popular. We now offer a  
dedicated, quality repair service with  
1000s of spare parts for all makes of  
windows and doors, including locks,  
hinges, handles, glass units, etc.

**SAME INSTALLATION TEAM  
FOR LAST 28 YEARS.**

*All of this from a small local  
company offering a combined  
wealth of experience of over 150  
years from our small workforce  
of six skilled craftsmen in the  
window and door industry.*

UNIT 11, COTTINGHAM WAY, THRAPSTON  
**01832 734570** **FENSA**  
[www.thrapstonglazingandjoinery.co.uk](http://www.thrapstonglazingandjoinery.co.uk)  
[www.windowanddoorrepairs.co.uk](http://www.windowanddoorrepairs.co.uk)  
Quality Repairs To Windows & Doors

**TAURUS** Holidays **Buckitt** Tours

**Sidmouth Devon 28 – 31 July,  
4 Days, £299 per person**

Another of our favourites, situated right on the beautiful Sidmouth sea front. This regency town lies in a sheltered bay, there is an eclectic array of architecture, the earliest buildings dating from 1820s when Sidmouth became a popular summer resort.

**Telemark and the Fjords, 31st August,  
12 Days, £1247 per person**

The Fjord Norway area is said to be one of the most beautiful destinations in the world. Telemark is a relatively unchartered area of Norway. It offers magnificent scenery with a high mountain plateau, deep valleys, forests, rivers and crystal clear lakes. It has a very rich cultural heritage. By contrast Norway's Western Fjords offer some of the world's most dramatic scenery. The Fjords in this area are some of the longest, deepest, narrowest and most beautiful in the world.

**Scottish Safari 18 – 22 September  
5 days, £415 per person**

Crieff is a little market town set amidst magnificent Perthshire scenery in the heart of Scotland. The region's breath-taking variety in scenery is simply splendid. From serene glens and endless expanses of forest to beautiful moors, rushing rivers and tumbling waterfalls. Scotland's most iconic species can be observed here in their natural environment including the majestic red deer stags. Castle Menzies adds some history as it is a great renaissance example of the transition in Scottish castles from rugged Highland fortresses to mansion houses.

**CALL NOW ON 01536 791066  
GET OUR FREE BROCHURE!**  
[taurus@rbtravel.co.uk](mailto:taurus@rbtravel.co.uk)  
[www.taurusholidays.co.uk](http://www.taurusholidays.co.uk)



**RB Travel**  
**01536 791066**

### June

**Sun 4** Cromer  
**Sun 4** Brighton  
**Tue 6** Melton Mowbray  
**Sat 24** Severn Valley Railway  
**Sun 25** Great Yarmouth  
**Sun 25** Blenheim Palace Flower Show  
**Fri 30** National Memorial Arboretum

### July

**Sun 2** Mystery Trip  
**Sat 8** Hampton Court Flower Show  
**Sun 9** Lowestoft  
**Sat 15** Bath  
**Sat 15** RAF Fairford Int Tattoo  
**Sun 16** Hunstanton  
**Wed 19** Highclere Castle  
**Sat 22** Skegness  
**Sat 22** Sheringham  
**Sun 23** Great Yarmouth  
**Sun 23** Whitby  
**Mon 24** Bakewell Market

**BIRMINGHAM INTERNATIONAL  
TATTOO**



**SUNDAY 26 NOVEMBER – Barclaycard Arena**  
Adult £45.40 • Senior £42.25 • Child £37.25

**Call us to book or request a brochure**  
Check out our website for further days out  
**[www.rbtravel.co.uk](http://www.rbtravel.co.uk)**



# Longhurst Group and Axiom Housing Association announce exciting new partnership

A housing association which owns and manages over 4,000 homes across Northamptonshire has announced an exciting new partnership. The

agreement will see Longhurst Group, which includes Spire Homes, merge with the Peterborough-based Axiom Housing Association. The

partnership will help deliver 700 new homes and maintain the provision of comprehensive care and support services. Longhurst Group currently owns and

manages over 19,000 properties across the Midlands and the East of England, while Axiom has more than 2,200 homes across Peterborough, Cambridgeshire and Lincolnshire and provides housing and services to over 5,500 people.

Longhurst Group Chief Executive, Julie Doyle, said: "The most satisfying aspect of this partnership is that it will help us to deliver exactly what the country needs. We believe that it is integral for housing associations to not only build more homes, but to ensure that people have access to the best quality care."

The agreement, which has been formally signed

off by shareholders, will see Axiom join the Group on 3rd July 2017. The partnership brings together two organisations recognised for high levels of performance and governance and is expected to grow the Group's turnover to over £160m within five years and result in a healthy 30 per cent operating margin.

The partnership means that Longhurst Group, which currently comprises L&H Homes, Friendship Care and Housing (FCH), Spire Homes and Keystone – the organisation's commercial development arm, will be responsible for over 22,000 properties

across almost 50 local authorities. The Group currently has 4,073 homes in Northamptonshire and by working in partnership with other organisations and developers they will help to combat the UK housing crisis. In Northamptonshire, the average house price is eight times the average salary and the average cost of private rent is £630 a month.

According to National Housing Federation research, an increasing number of people are being priced out of home ownership and turning to the more affordable options provided by housing associations like Longhurst Group.

Alan Lewin and Julie Doyle



## Popular food festival returns to Kelmarsh Hall, Northamptonshire

**The Great British Food Festival is back at the stunning Kelmarsh Hall this summer! The popular event is back on the 8th and 9th July.**

The festival is even bigger and better this year, featuring new additions such as plant your own area for kids and cooking in a camper demonstrations.

The recipe for the weekend? Well take over 60 top artisan producers, a big serving of stunning hot food, real ale and wine bars, add a dash of craft and gift stalls, lots of activities for the kids, top chef demonstrations from the likes of Great British Bake Off finalist Luis Troyano and Howard Middleton, stir in a cake competition and the popular Men V's Food, with lashings of excellent live music and mix

together to make a lovely foodie family day out.

The main chef demonstration area hosts great local and tv chefs, all demonstrations are free to enter so everyone can pick up top foodie tips. There are also regular Artisan Foodie talks and the popular Great British Cake off and Men V's Food for you to get involved with! The Great British Food Festival has attracted lots of producers showcasing the best in local, seasonal and specialty food and drink. It's a great opportunity to get a real taste of the best of Northamptonshire and Great British produce

– sample, enjoy and buy. With Great Britain's amazing mix of cultures and cuisines we thought it would be a shame to overlook some more exotic elements – so you can try Thai, Mexican, Asian as well as pulled pork, prime steak, and the best local burgers and sausages, for those with more traditional tastes! After you've done your foodie shopping, sit out enjoying tasty hot food, a refreshing drink (or two), with great live music in the stunning surroundings of Kelmarsh Hall

The perfect recipe for a fun, foodie day out for the whole family.

## Swim in aid of WaterAid

On Sunday 21st May, pupils from Oundle School's Sidney Boys' Boarding House took part in a relay swim, with the goal of swimming the width of the channel in support of WaterAid.

Forty-four pupils in total, drawn from every year group, swam over the course of the event, and together they achieved a remarkable total of 850 lengths or 25.2 miles.

WaterAid is a global charity, with teams in over thirty countries working to provide clean, safe water to those in need. It has the highest percentage of donations going directly to its cause of any large charity,

and can make a huge difference with a small amount of money: £15 donated to WaterAid will provide someone with safe drinking water for a year; long enough to seek education and employment, and break the cycle of poverty.

Pupil organiser, Will Johnson (17) commented, "This was made possible by the efforts of some pupils who swam extra lengths in addition to the number they had signed up and special mention must go to Tom Riegels (16), Sam To (16), Linus Lam (17), Egan Pashley (18) and Ruben Sector (16), all of whom swam over a mile."



With Gift Aid, the boys have raised just over £1,600. To sponsor the boys please visit: [uk.virginmoneygiving.com/fundraiser-web/fundraiser/showFundraiserProfilePage.action?userUrl=SidneySwim2017](http://uk.virginmoneygiving.com/fundraiser-web/fundraiser/showFundraiserProfilePage.action?userUrl=SidneySwim2017)



# Nene Valley Business News

Welcome to my June 2017 business column. Every month I will be visiting a wide diverse range of businesses across the district. I will be in a different town every month featuring a different business with a view to promoting and giving a boost to our local hard working industries.



successful Captains of New Zealand cricket. I bet that has surprised our readers, come to Irthlingborough and you might bump into a sporting legend!

## A lifetime passion

Robert was introduced to cricket at a young age by his grandfather who took him to matches and it became a lifetime passion for Robert who played cricket and football at school.

Robert's dreams were fulfilled when he played cricket three times at Lords, Marylebone Cricket Club or the MCC to you and me, which is the world's most active cricket club and founded in 1787. MCC has 18,000 full members and 5,000 associate members who own all the grounds and MCC assets including the most famous of which is the Ashes Urn. Robert is currently the Vice Chairman of the Northamptonshire League at NCC and has travelled the world as a player and is also area manager for the MCC, a busy man!

Robert Pack Cricket has a central location in Irthlingborough and Robert has manufactured cricket bats for national and international cricket players which include clients from Canada, Dubai, New Zealand, Australia and Austria. Originally a carpenter by trade, Robert had an apprenticeship with Marriott's where he went onto train as a master bat maker and was mentored by Bernie Facer from BB Bats, who was famous for the quality of his bats in the cricketing world.

## Manufacturing & custom made specials

Cricket bats are made from English willow which is a light weight wood that doesn't splinter and can be pressed. The trunk of the tree is used which is getting harder to source. Robert's extensive



experience can tell at a glance if the wood is going to produce a good bat as every piece of willow wood is different. A top grade piece of wood can give a great sweet spot which is the area the ball hits the bat.

Sometimes Robert is commissioned to make a specially designed cricket bat.

Recently he crafted a bat with a diamond set into it for George Fox who is a designer and developer, which when finished was

valued at £15,000. Wow! That's something you don't see every day.

The business also has a shop on site which supplies cricket equipment to professionals and amateurs along with expert advice needed to assist you in finding the best equipment

to suit your cricketing needs

Next month I will be visiting a business which involves a lot of healing and relaxing which is located in Rushden. Until then best wishes to all our readers from your local business champion Marika Hillson.

Marika Hillson

If you wish to contact or visit Robert Pack Cricket, contact details are as follows: Robert Pack Cricket, 103 High Street, Irthlingborough NN9 5PU, Tel: 01933 650484, Web: [www.robertpackcricket.co.uk](http://www.robertpackcricket.co.uk). Opening hours: Mon-Fri: 10am-5.30pm, late night Wed & Thu: 10am-7pm, Sat: 9am-2pm.

This month I am back in my home town of Irthlingborough visiting a specialist business tucked away off the High Street with a celebrity sporting connection. In fact this month's featured business ties up very well with a grant I was successful in recently landing to upgrade Irthlingborough's Cricket Club to a Premier League Standard. I was met by the owner, Mr Robert Pack who offers a bespoke service and who hand crafts the cricket bats in his onsite workshop.

## A specialised niche business

Established since 2003, Robert Pack is a master bat maker and he also repairs and refurbishes cricket bats and offers a knocking in service. This is a cricket term meaning he compresses the fibres of the willow wood used to make a cricket bat to knit them together, so they become tough enough to withstand the impact of a cricket ball.

Effective "knocking-in" will dramatically improve performance and increase the lifespan of the bat;

I bet you didn't know that!

Robert has 28 years' experience covering all areas of manufacturing through to customer service in the industry. He has worked with many famous brand names such as Kookaburra, Alfred Readers and presently Blueroom and has 11 years of experience working for Puma UK as their production manager.

Irthlingborough has had many famous cricketing clients visiting Robert Pack Cricket or RPC over the years which include famous cricketers such as giant of English Cricket, presenter and broadcaster Andrew "Freddy" Flintoff, Australian Legend, Adam Gilchrist, who is regarded as the greatest wicketkeeper and batsman of all time and former New Zealand International cricketer, Brendan "Baz" McCullum, who is considered to be one of the most



## Fully Serviced Offices to Rent in Rushden

- Flexible lease terms from **£250** per person per month
- No hidden costs
- Entry phone and key fobs to main entrance
- An ideal solution for meeting small office requirements
- There are 5 separate offices dedicated, private or share workspaces
- Fully furnished
- Broadband and Wi-Fi
- Polycom phone system
- Security and CCTV
- WC (separate male/female)
- Shared lounge and kitchen area
- Cleaner/janitor services



The building is within walking distance of amenities and town centre and the office space is available in a variety of combinations to suit the needs of your business. These are one, two, three and four serviced offices (larger suites also available).

**Contact: Prem Nahr**

E: [prem.nahr@gplabslimited.com](mailto:prem.nahr@gplabslimited.com)

T: 07487 508739



# Man sentenced for drug offences

A man has been sent to prison for two and a half years after an investigation was launched by Operation Worcester, a police drive to tackle gang related offences.

Russell Danes, 40, of Rushden was sentenced at Northampton Crown Court on Friday, 12th May, after pleading guilty to Possession with Intent to Supply Class A and Possession of Criminal Property.

Danes was arrested after a drugs warrant was executed at the Wheatsheaf Public House, High

Street South, Rushden, on 19th February 2016.

Detective Inspector Lee McBride from Operation Worcester, said:

"We continue to pursue those people who deal drugs in our towns and there was very clear evidence that Russell Danes was supplying high purity cocaine when we arrested him.

"We are working hard to disrupt those people who are involved in drug and violence offences and securing convictions against people such as Danes takes us another step towards a safer Northamptonshire."

Officers from Operation Worcester are committed to tackling those people involved in

gang-related crime. If you have any information about people responsible for dealing drugs or committing acts of violence, please call police on 101 or Crimestoppers anonymously on 0800 111 555.

If you're concerned about someone you know, who you believe may be involved in a gang, you can find out what support is available here or by calling 101.



## Art exhibition in Higham Ferrers

Over the weekend of 24th and 25th of June 2017 Finedon Creative Art Studio will be holding their first art exhibition, showcasing their watercolour paintings, collage work and beaded jewellery.

The studio members are Melanie, Jill, Sheree and Stephanie who meet regularly in Finedon to paint, create and each explore their own unique watercolour style. From landscapes to flowers, wildlife and imaginative fantasy pictures to finely

crafted beaded jewellery and 3D collage there is bound to be something to suit all visitors tastes.

Melanie Henson who started the group is an art teacher specialising in watercolour painting and drawing. She runs classes from Finedon and workshops at Coleman's Stationers in Wellingborough. She and other members of the group will be there to talk to visitors, answer questions about their work and creative process and to encourage would be artists to take the

plunge and pick up the paintbrush!

The backdrop to this art will be the beautiful medieval Chichele College and its gardens in Higham Ferrers, Northamptonshire. Admission is free to

the exhibition and gardens. Free parking is available in nearby car parks and on street parking at the rear of the college in Saffron Road. Disabled access is limited to the ground floor and gardens.

The exhibition will be open on Saturday and Sunday from 10am-4pm.

Chichele College is on College Street, Higham Ferrers, NN10 8DX.

There will also be a Farmers' Market on the Saturday morning in the town square.

For more information please contact Melanie, [melaniehensonart@outlook.com](mailto:melaniehensonart@outlook.com), [www.abrushwithpaper.co.uk](http://www.abrushwithpaper.co.uk).



### Quality Kitchens, Bathrooms and Bedrooms

Showroom Open  
Monday - Saturday  
9:00 am to 4:30 pm

**PeterCrisp**  
Design Studio  
*The Name You Can Trust*

25/27 Church Street, Rushden  
Northamptonshire, NN10 9YU  
01933 356424

[www.petercrisp.co.uk](http://www.petercrisp.co.uk)

### Beautifully Crafted - designed by experts, fitted by craftsmen



Free Design, Planning and Quoting

Inclusive Start to Finish Project Management



**Sunday 4th June****Morning Service**

Thrapston Baptist Church  
10:30am

Preacher: Mat Hussain  
Theme - Knowing Jesus:  
Demolishing Strongholds

**Monday 5th June****Flower Wreath on a black cotton shopping bag**

Ringstead Village Social Club  
10am to 1.30pm

£20 booking essential  
01933 460676

For beginners paint a circle of flowers onto a black shopping bag makes a lovely present.

**Thursday 8th June****Tiddlers Group for 0-3 year olds**

Thrapston Baptist Church  
9:30am to 11:30am

NO TIDDLERS this week due to the church being used as a Polling Station.

**Lunchtime Concert – Junior Ensembles**

St Peter's Church, Oundle  
1.15pm, free/lunch can be purchased  
Concerts in this beautiful church setting in Oundle. Lunch is provided for £3.50

**Friday 9th June****Fusion for 7-11 year olds**

Thrapston Baptist Church  
6.30pm-8pm  
Lively and fun group with games, songs and bible based illustrations.

**The Toll**

The Stahl  
7.45pm  
£12 Adults, £10 Concessions.  
After winning Fringe First, Luke Wright is back with a stunning new spoken word show.

**Saturday 10th June****Church Fete in Church Grounds**

Rushden St.Mary's Church  
2-4pm Admission  
£1 per adult children free  
Contact Edna Wadsworth  
01933357253

**Saturday 10th & Sunday 11th June****Twywell Festival**

Twywell  
10am-5pm  
Activities and entertainment for all ages including stalls, games, food, beer, BBQ and music.

**Art Exhibition**

Chichele College,  
Higham Ferrers  
10am-4pm, free admission.  
Jacqui Tomlin FFPAA and Jean Daker FFPAA  
After popular request will be holding another exhibition of their latest works in oil, acrylic, pastel and watercolour.  
Our subjects, which are varied to suit everyone, are landscapes, seascapes, wildlife and flora. These are framed professionally, using the best frames available to suit the paintings. Viewing under no obligation, not to be missed.

**Sunday 11th June****Communion Service**

Thrapston Baptist Church  
10.30am  
Preacher: Mat Hussain  
Theme - Knowing Jesus:  
Battle for our minds

**Monday 12th June****Oundle U3A Monthly Meeting**

Queen Victoria Hall,  
West Street, Oundle  
Doors open 2pm, members £1,

non-members £2

Contact 01832 275933

Tracing our Past with Jan Pearson

**Tuesday 13th June****Spring Flowers with****Butterfly in acrylics**

Ringstead Village Social Club  
11am-3pm, £19 booking essential  
01933 460676

A lovely painting of Spring flowers with Butterfly an easy first time painting for complete beginners.

**Wednesday 14th June****Walking Group**

Leader Keith Dixon ( 01823 275532)  
Walk starts at Oundle Long Stay car park East Rd. at 6.30pm grid ref 045/884 map Explorer 227 distance 4 miles

**Military Tribunal Records in World War**

Fletton House,  
Fletton Way, Oundle  
7.30pm Visitors £2/members free  
D Humpherson 01832 270061  
A talk by Angela Malin, Vice-Chairman of Northamptonshire Family History Society

**Thursday 15th June****Tiddlers Group for 0-3 year olds**

Thrapston Baptist Church  
9.30am-11.30am  
Friendly and welcoming with lots of toys and play equipment for the little ones to enjoy. £1 per carer – as many toddlers as you like!

**Lunchtime Concert – Junior Strings, Songsters and Choirs**

St Peter's Church, Oundle  
1.15pm  
Free, lunch can be purchased  
Concerts in this beautiful church setting in Oundle. Lunch is provided for £3.50

**Friday 16th June****Thrapston and District U3A monthly meeting**

The Plaza, Cosy Nook,  
Thrapston N14 4PS  
10-12 noon, visitors £2, includes refreshments  
07542 775 603  
School Holiday Fiascos with Mike Rosen

**Fusion for 7-11 year olds**

Thrapston Baptist Church  
6.30pm-8pm  
Lively and fun group with games, songs and bible based illustrations.

**Gentle Waterfall in acrylics**

Ringstead Village Social Club  
10am to 3pm  
£23 booking essential  
01933 460676  
A pretty landscape painting of a small waterfall an easy acrylic panting for first time painters.

**Saturday 17th June****Messy Church at St Peter's Church Oundle.**

Creativity, food and fun for people of all ages in a Christian setting.

**Morning Glory painting on slate using acrylics**

Ringstead Village Social Club  
10am-2pm, £20 booking essential  
Never painted on slate before this is an easy one for first timers who will produce a pleasing result.  
Children's book sale  
Oundle Library  
10am-2pm, free admission  
Come and grab yourself a bargain, large range of children's books for sale.

**Islip Bowls Club**

Quiz Night with Fish & Chip

Supper

£6

Islip Workingmen's Club  
6.30pm for 7pm  
To Book call Barbara 01832 733154, or Gill 01832 733475  
Everyone very welcome

**A family talk about the Rutland Water Ospreys**

Oundle Library, Glapthorn Road,  
PE8 4AJ  
4pm-5pm, free admission but donations to the project very welcome.  
hilary.hoyle@gmail.com  
Children's author and osprey expert, Ken Davies, talks about the amazing life of local ospreys.

**Sunday 18th June****Morning Service**

Thrapston Baptist Church  
10:30am  
Preacher: Mike Elcome

**Higham Ferrers Footpath Group**

Saffron Road car park Higham  
Ferrers for car sharing  
9.30am, free  
01933 314032  
5.7 mile walk from Yelden

**By Appointment****Counselling & Listening Service**

No 1 St Osyth's Lane,  
Oundle, Northants PE8 4BG  
These services are free  
Marilyn 07936015965

**Housing, benefits and employment advice**

No 1 St Osyth's Lane,  
Oundle, Northants PE8 4BG  
01832 770010/  
office@oundlebaptist.org.uk

**Half-Term****All-age Touch Typing Club**

Mon-Fri, 9.30am-10.30am  
Diane Gifford 07432 123 438  
Learn or Refresh your skill £15 course intro with coffee.

**Every Monday****Baggy pants Yoga Class**

Masonic Hall, Wellingborough  
Road, Rushden  
8.30am-9.30am, £5 per class  
perfect for all ages/abilities  
07873743256/  
carole.wyatt@virginmedia.com

**Islip Ladies Choir**

Thrapston Church Hall  
2pm-3.30pm  
Barbara 01536 394431

**Yoga Classes**

Denford Village Hall  
9am-10am, £4 per session  
Anita Hackney 01832 733274

**Titchmarsh Folk Dance Club**

The Club Room, High Street,  
Titchmarsh NN14 3DF  
8pm-10pm, £1 inc tea/coffee  
Kev Prigmore 01536 514023/  
titchmarshfdc@gmail.com

**Oundle Ladies****Running Group**

Oundle pool car park  
6.45pm  
Jane Walker 01832 272898/  
janewalkercakes@icloud.com

**Baggy pants Yoga**

Masonic Hall, Wellingborough  
Road, Rushden  
10am-11am, £5 per session  
01933 382837/07873 743256/  
carole.wyatt@virginmedia.com

**Spanish Tuition**

The Old Town Hall,  
Market Place, Oundle  
9am-8pm, £25 per class  
01832 776336/  
info@antlerlanguages.co.uk

**Every Monday (term time)****Praise and Play**

St James' Church Thrapston  
1.30pm-2.45pm,  
refreshments available  
Anita 735443

**Aqua Aerobic Classes**

Oundle School Swimming Pool,  
Milton Road, Oundle  
8.45-9.30am, £25 for 5 sessions  
01832 277208/277195

**Every Monday, Friday & Saturday (term time)****Otters Swim School Lessons**

Oundle School Swimming Pool,  
Milton Road, Oundle  
Mon 3.55pm-6.10pm,  
Fri 3.55pm-6.10pm,  
Sat 8.30am-12noon, booked in  
advance as a block (£5.50 per  
lesson)  
01832 277208/277195

**1st Monday of the month****Oundle Wives**

Methodist Church, Oundle  
7.45pm, £3 refreshments/raffle  
01832 272178

**Oundle & District Royal****British Legion Meeting**

The Talbot Hotel, Oundle  
7pm  
Les Starks 01832 270073

**Finedon Irthingborough & District Branch Royal British Legion Branch Meeting**

Finedon Bowls Club  
7.30pm  
Peter Eames 07434328237

**Every 2nd Monday (except January & August)****Thrapston & District Royal British Legion Branch Meeting**

The Thrapston Centre,  
High Street, Thrapston  
7.30pm  
Veronica McCurdy 01832 735206

**2nd Monday of the month****Royal British Legion Rushden Branch Monthly Meeting**

Rushden Football & Social Club,  
Hayden Road, Rushden  
7.15pm, annual fee £17  
Jake Baker 07525 441267

**2nd & 4th Mondays of the month****StitChat**

No 1 St Osyth's Lane, Oundle  
1.30pm-3.30pm  
01832 770010/  
office@oundlebaptist.org.uk

**Monday once a month****Woodturning Club**

Hardwick Village, Near  
Wellingborough NN9 5AL

7pm-10pm

Paul Lawman 01933 674260

**Every Monday & Thursday****Oundle Bridge Club**

Fletton House, Fletton Way,  
Oundle PE8 4JA  
7pm start  
01832 273044

**Every Tuesday****Short Mat Bowls**

Islip Village Hall  
10am-12noon, £3  
Barbara Finch 01832 733154

**Phoenix Gaming Club (Age 12+)**

The Rushden Scouts Hall,  
Brooke Close behind Orbit Tyres  
(Skinners Lane, Rushden  
NN10 OXH)  
7pm-11pm, membership £5 pa  
Aron 07739563657/  
aron.phoenix@virginmedia.com

**Art Classes (10 weeks)**

Knuston Hall, Knuston  
7-9pm, 10 Lessons £100  
Jamie 07899 676769

**East Northants Classic Motorcycle Club**

New Inn Public House, Wymington  
Meet around 7.30pm

**Sling Walk**

11am  
First Tuesday of the month there will be Sling Library at 10am prior to the walk. Second Tuesday meet at Rushden CC Hayway instead of Higham Ferrers. 01933 410112

**Rushden Mission Training Band**

Mission Church, Wellingborough  
Road, Rushden  
7.30pm-8.45pm  
Alan Richardson 01933 355302

**Short Mat Bowls**

Saxon Hall, Raunds  
1.45pm-4pm, £3  
01933 624545

**Yoga Class**

Whitefriars Infant School,  
Boughton Drive, Rushden  
7.15pm-8.15pm, £5 per session  
Carole 07873743256/  
carole.wyatt@virginmedia.com

**Ringstead's Jolly Good Company**

Ringstead Shared Church  
10am-11am, £4  
Music & Movement for over-55s.

**Every Tuesday (term time)****Toddlers' Drop In**

No 1 St Osyth's Lane, Oundle  
9.15am-11.30am, free  
01832 770010/  
office@oundlebaptist.org.uk

**1st Tuesday of every month****Great Companions (singles 55+)**

Rushden Bowls Club,  
Northampton Road  
7-9pm, yearly membership £6  
Pat Bazeley 07931 964360

**2nd Tuesday of the month****Woodford WI Meeting**

Woodford Sports and Social Club  
7.30pm  
Lynn Sortwell 01832 732740

**Tea Dance**

Pemberton Centre, Rushden  
Dancing to 'Music Box'  
2pm-4pm, £3 per person including  
tea/coffee & cake

**Higham Ferrers Guided Tour**

Groups of 6 minimum. Trained  
guides. Tea & cakes, optional.  
01933 411191

**Wildlife Trust Little Bugs Club**

10am-11.30am,  
£1 per child (adults are free)  
Louise Tuffin 01604 774043/  
louise.tuffin@wildlifebcn.org

**50+ Adventure Club**

For further information  
01536 505548/www.fiftyplus  
northantsadventureclub.org.uk

**Every Tuesday & Thursday****Health Walks Stanwick Lakes**

10am-11am, free, car park charges  
01933 625522/  
www.stanwicklakes.org.uk

**Every Tuesday, Thursday & Friday Whist Drive**

Rushden Bowls Club  
Northampton Road, Rushden  
7.30pm, £2  
01933 313714

**Every Tuesday & Saturday****Coffee Mornings**

St James Church, Thrapston  
10am-12noon  
01832 730019

**Every Wednesday****Ladies Archery****Pemberton Maid Marions**

The Pemberton Centre,  
H E Bates Way NN10 9YP  
Diane 01933 314032 or  
Nicki 01933 395913

**Tai Chi**

Chelveston Village Hall  
2pm-3pm, £5

**Dog Training and Socialisation and Ringcraft**

Halefield, Woodnewton, nr Oundle  
Classes from 6.45pm  
01832 293432/oundledogs@aol.  
com/www.oundledogs.co.uk



**Rainbow Cafe for Tots**

Stanwick Lakes  
10.30am-12noon and 1.30pm  
(term time only), £2.50 per child –  
car park charges apply.  
01933 625522/  
[www.stanwicklakes.org.uk](http://www.stanwicklakes.org.uk)

**Club Night**

Apethorpe Tennis Club  
From 6pm

**Returners to Work**

No.1 St. Osyth's Lane  
10am-12noon  
01832 770011

**Art & Craft Class**

Oundle Rural Mind, 1 Herne Park,  
East Road, Oundle PE8 4BZ  
Irene Issitt 01832 275020

**Inflatable Fun Session**

Oundle School Swimming Pool,  
Milton Road Oundle  
5-6pm (May vary during school  
holidays), £3 adult & £2.25 child  
01832 277208/277195

**Cambridge First  
Certificate in English**

The Old Town Hall,  
Market Place, Oundle  
9.30am-12.30pm, £25 per week  
01832 776336/  
[info@antlerlanguages.co.uk](mailto:info@antlerlanguages.co.uk)

**French Tuition**

The Old Town Hall,  
Market Place, Oundle  
From 6pm, £25 per week  
01832 776336/  
[info@antlerlanguages.co.uk](mailto:info@antlerlanguages.co.uk)

**Ringstead's Beat Bugs**

Ringstead Shared Church  
NN14 4DA  
2pm-2.45pm, £21/6-week session  
(£3.50 per week)  
Angela 01933 622316/  
[rbc-rsc@angeladavis.net](mailto:rbc-rsc@angeladavis.net)

**Jelly Babes Toddler Group**

Rushden Independent  
Wesleyan Church  
9.15am

**Every Wednesday (term time)  
Community ICT Classes**

Needham Building,  
Oundle School SciTec, Glapthorn  
Road, Oundle  
2.30pm-4pm  
01832 277267 to enrol

**Tiny Tots**

Oundle Cof E Primary School,  
Glapthorn Road  
1.45pm

**660 Club (Age 60+)**

Two Acre Club, off Milton Road  
2.15pm-3.45pm  
Afternoon tea and entertainment  
hosted by Oundle pupils.

**Allegra Singers –**

**Three-part ladies choir**  
Music room, Sports Pavilion, Islip  
7.30-9.30pm, £3 per session  
Veronica 01832 732611/  
07753 472225

**Every alternate Wednesday  
Psychic & Spiritual Awareness  
Development Group**

Rushden  
1pm-3pm or 7.30pm-9.30pm,  
£7 per session  
Renalta Hall 07712 740495

**1st Wednesday of the month**

**Raunds Ladies Group**  
The Saxon Hall, Raunds  
8pm-10pm, Visitors £3.50

**1st & 3rd Wednesday of the  
month**

**Thrapston Country Dancers**  
St Johns Ambulance Hall  
2pm-3.30pm  
G Hearnden 01933 622827/  
[ghearnden@tiscali.co.uk](mailto:ghearnden@tiscali.co.uk)

**2nd Wednesday of the month**

**Coffee Morning**  
Raunds Methodist Church  
10am-12noon  
01933 383378

**2nd & 4th Wednesday of the  
month**

**Northants Model Makers**  
Windmill Primary School,  
Raunds NN9 6LA  
Main meeting starts 7.30ish  
First couple of meetings free  
Bob Humpage 07960 054405/  
[modelmaker@tiscali.co.uk](mailto:modelmaker@tiscali.co.uk)

**NWR – linking lively  
minded women**

Dovedale, 1 Herne Park,  
East Road, Oundle  
7.30pm-7.45pm  
Carol 01832 270061

**3rd Wednesday of the month**

**Wellingborough Flower**

**Arrangement Society**

St Mary's Church Hall, Knox Road,  
Wellingborough NN8 1HU  
7.30pm, £5  
Chairman 01933 222326/  
Secretary 01604 870275

**Higham and Rushden U3A**

Pemberton Centre, Rushden  
2pm, visitors always welcome to  
attend (£3 charge)  
[www.highamandrushdenu3a.org.uk](http://www.highamandrushdenu3a.org.uk)

**4th Wednesday of the month**

**Rushden Pensioners Forum**  
St Peters Church Hall,  
Midland Road, Rushden  
2pm-4pm  
Mary Morby 01933 312476/  
[e.m.m@btinternet.com](mailto:e.m.m@btinternet.com)

**Wednesday & Thursday**

**Free Counselling**  
No.1 St. Osyth's Lane Oundle  
By appointment 0793 6015965

**Wednesday & Saturday**

**East Northants Athletics Club**  
– ‘Getting Kids Into Athletics’  
The Ferrers School,  
Higham Ferrers  
Wed 6-7pm, Sat 9-10am,  
£4 per session or Wed & Sat £7  
Graham Bufton 07788 698883/  
[grahambufton.ena@gmail.com](mailto:grahambufton.ena@gmail.com)

**Wednesday evenings and  
Sunday mornings**

**Ferrers & Rushden Tennis Club**  
Higham Ferrers Recreation  
Ground, off Wharf Road  
10am-12noon (Sun); 6.30pm-  
8.30pm (Wed). Per club session £2  
adults/£1 junior (youngest aged 10)  
Steve Roberts 01933 461028/  
07960 846092

**Every Thursday**

**Rushden Folk Dance Club**  
St Mary's Church Hall, Rushden  
8-10pm, first visit free, £2 thereafter  
Val 01933 387327

**The Silver Fox  
Woodturning Club**

Dale End Scout Headquarters,  
Croyland Road, Wellingborough  
10am-1pm, £2 all members  
Mick Webb 01933 682517

**Move to Health**

No 1 St Osyth's Lane, Oundle  
2.15pm-3pm  
[office@oundlebaptist.org.uk](mailto:office@oundlebaptist.org.uk)/  
01832 770010

**Thursday Drop-In**

No 1 St Osyth's Lane, Oundle  
10am-2pm  
01832 770010/  
[office@oundlebaptist.org.uk](mailto:office@oundlebaptist.org.uk)

**Little Ducklings Pre-School  
Stay & Play 'Tea & Tots' Sessions**

1.30pm-3pm, £1.50 per family.  
01832 358085

**Short Mat Bowls**

Wymington Memorial Hall  
1.45pm-4pm, £2 admission  
Mrs Smith 01933 355960

**Olde and Sequence Dancing**

Woodford Sports and Social Club  
7.30pm-9.30pm, £2  
Dorothy 01832 732534 or  
Keith 01832 731896

**Every Thursday (term time)  
Music Makers**

Titchmarsh Pavilion  
9.30am-10.15am, £4 per child,  
£2 for siblings  
Naomi Cooper on  
[musicmakersnorthants@gmail.com](mailto:musicmakersnorthants@gmail.com)

**Music Makers**

Joan Strong Centre, Oundle  
11.15am-12noon, £4 per child,  
£2 for siblings

Naomi Cooper on  
[musicmakersnorthants@gmail.com](mailto:musicmakersnorthants@gmail.com)

**Little Treasures Tots Group**

St Laurence's Church, Stanwick  
9.30am-11am,  
donations to cover costs  
Nicki 01933 625658

**Music Makers**

Stanwick Village Hall  
2pm-2.45pm, £4 per child,  
£2 for siblings  
Naomi Cooper on  
[musicmakersnorthants@gmail.com](mailto:musicmakersnorthants@gmail.com)

**Community Art Classes**

Oundle School Art Department  
7.30pm-8.30pm, free classes for  
people with a disability.

**Coffee/tea and biscuits  
in the Bede House**

St Mary's Church, Higham Ferrers  
10am-12noon, no charge just a  
donation to cover costs.

**Adult & Child Swim Sessions**

Oundle School Swimming Pool,  
Milton Road Oundle  
9.15-9.45am, booked in advance  
as a block (£4.75 per lesson)  
01832 277208/277195

**1st Thursday of the month**

**Raunds District History Society**  
Saxon Hall, Raunds  
7.30pm-9.30pm, £3 each,  
includes refreshments  
Secretary 01933 461480

**3rd Thursday of the month**

**Painting Class with Nick Baldwin**  
Chelveston Village Hall,  
10am-4pm, £17 per session  
Janet Lowe 01933 389647.

**Ise & Nene Valley Turners**

Counties Community Centre,  
Hertford Rd, Kettering NN15 6LG  
7pm, members free, visitors £7  
Peter Bond 01933 741835/  
[peterjbond@btinternet.com](mailto:peterjbond@btinternet.com)

**Thursday Market Day**

**No.1 Cafe - Free Drop-In**  
No.1 St, Osyth's Lane  
10am-2pm  
01832 770011

**Every Friday**

**Walk and Chat**  
Rushden Hall Park, under flag pole  
10am  
Sue Mckay 07739 327022/  
[sue.mckay@groundwork.org.uk](mailto:sue.mckay@groundwork.org.uk)

**Music Makers**

Nene Centre, Thrapston  
12.45-1.30pm & 1.45-2.30pm,  
£4 per child, £2 for siblings  
Naomi Cooper 07815 293893/  
[musicmakersnorthants@gmail.com](mailto:musicmakersnorthants@gmail.com)

**French Beginners**

The Old Town Hall,  
Market Place, Oundle  
6pm-7.30pm, £25 per class  
01832 776336/  
[info@antlerlanguages.co.uk](mailto:info@antlerlanguages.co.uk)

**Every Friday (term time)  
Over 60s FREE swim**

Oundle School Swimming Pool,  
Milton Road, Oundle  
3pm-3.45pm  
01832 277208/277195

**Pre-School Swimming Lessons**

Oundle School Swimming Pool,  
Milton Road, Oundle  
1.55-2.25pm & 2.30-3pm  
Booked in advance as a block  
(£6.75 per lesson)  
01832 277208/277195

**Most Fridays**

**Local Focus 'explorations'**  
Various East Northants locations  
9.30am-12.30pm/2.30pm

£3 per re-usable map  
01933 461480

**1st Friday of the month  
(Check before travelling)****Craft Cafe**

Stanwick Lakes  
10.30am-1pm, modest charge for  
some materials – car park charges  
01933 625522/  
[www.stanwicklakes.org.uk](http://www.stanwicklakes.org.uk)

**Oundle Evergreen Club**

2.30pm in the Victoria Hall for tea  
and cakes plus entertainment.  
01832 273826/272340

**3rd Friday of the month**

**Raunds Tea Dance**  
Saxon Hall, Raunds  
2pm-4.15pm, £3 (50p for raffle)  
Mrs Wicks 01933 312623

**U3A Branch Meeting**

The Plaza, Cosy Nook,  
Thrapston NN14 4PS  
10am-12noon, £2 (visitors), £1  
(members) includes refreshments

**Former Carers Group**

No 1 St Osyth's Lane,  
Oundle PE8 4BG  
2pm-3.30pm, free  
01832 770010/  
[office@oundlebaptist.org.uk](mailto:office@oundlebaptist.org.uk)

**3rd Friday of the month  
(Check before travelling)**

**Stanwick Stitchers**  
Stanwick Lakes  
10.30am, free, car park charges.  
01933 625522 or Pauline on  
01933 229817/  
[www.stanwicklakes.org.uk](http://www.stanwicklakes.org.uk)

**1st Saturday of the month**

**Coffee Morning**  
St Mary's Church, Ringstead  
10am-12noon  
01933 624262

**Thrapston Farmers' Market**

Thrapston High Street  
9am-1pm  
[www.thrapstonfarmersmarket.moonfruit.com](http://www.thrapstonfarmersmarket.moonfruit.com)

**2nd Saturday of the month**

**It's All Greek to Me –  
Greek cookery classes**  
Fletton House, Oundle  
9am-3pm  
Andreas Panos 01832 720043

**Coffee 'n' Cakes**

Oundle Methodist Church,  
Drummingwell Lane  
(behind the Talbot Hotel)  
10am-12noon  
John Hewitson 01832 272209

**WE Watch**

Stanwick Lakes  
01933 625522/  
[wewatchstanwick@hotmail.co.uk](mailto:wewatchstanwick@hotmail.co.uk)

**Oundle Farmers' Market**

Market Place, Oundle  
8am-1.30pm  
Oundle Town Council  
01832 272055

**3rd Saturday of the month**

**Greek cookery classes &  
pop up Taverna**  
Wadenhoe Village Hall, Church  
Street, Wadenhoe PE8 5ST  
11am-11pm  
Andreas Panos 01832 720043

**Phoenix Group**

Stanwick Lakes  
01933 625522/  
[wewatchstanwick@hotmail.co.uk](mailto:wewatchstanwick@hotmail.co.uk)

**Messy Church**

Rushden Salvation Army,  
Church Street, Rushden  
4pm  
George Ellitson 01933 313106

**Last Saturday of the month  
(except December)****Farmers' Market**

Market Square, Higham Ferrers  
9am-1pm  
[danielle@highamferrers-tc.gov.uk](mailto:danielle@highamferrers-tc.gov.uk)

**Every Saturday & Sunday****Coffee & cakes/  
Sunday worship**

Rushden Independent Wesleyan  
Church (Entrance Queen St)  
Saturday coffee & cakes  
10am-11.30am, Sunday worship  
10.45am with children's activities  
2nd Sunday in the month 4pm.

**Every Sunday****Morning Worship  
Rushden Mission Church**

Wellingborough Road  
10.45am  
Alan 01933 355302

**Morning Church Service**

Rushden Heritage Chapel Hall,  
Park Road, Rushden NN10 0RG  
10.30am

**Church Service**

The Heritage Chapel and Halls,  
Park Road, Rushden NN10 0RW  
10.30am  
Cheryl 07969 603958/  
[cheze49@gmail.com](mailto:cheze49@gmail.com)

**Ringstead Shared Church**

10.30am  
Mike Freeman 01933 389796/  
[rbc-rsc@angeladavis.net](mailto:rbc-rsc@angeladavis.net)  
Service for all (Communion first  
Sunday each month)

**1st Sunday of the month**

**Priceless – for young children  
and their families**  
St Laurence's Church, Stanwick  
9.30am-10.15am

**Every 2nd, 4th & 5th Sunday****Pete's Pack**

St Peter's Church,  
Newton Bromswold  
10am-11am  
Helen Lines 07917001924  
Bible based activities for children  
aged 3 years and over.

**3rd Sunday of the month**

**All Age Worship**  
St Laurence's Church, Stanwick  
9.30am

**Leisurely, Sociable Strolls**

Pub start – if not lunching do  
not use pub car park  
10am for 10.30am start.  
Guests £2 or join for year £8  
[secretary@northamptonshireshamblers.org.uk](mailto:secretary@northamptonshireshamblers.org.uk)

**4th Sunday of the month**

**(except December)**  
**King's Cliffe Heritage Centre**  
Bridge Street. (Hanging sign  
when we're open). Open  
2pm-5pm

**Last Sunday of the month  
(Check before travelling)**

**Local Producers' and  
Farmers' Market**  
Stanwick Lakes  
10am-2pm, free, car park charges.  
01933 625522/  
[www.stanwicklakes.org.uk](http://www.stanwicklakes.org.uk)

**Ongoing****Drawing & Painting Classes**

Ecton Village Hall, Chelveston  
Village Hall, Warkton Village Hall &  
Kingsthorpe Community Centre  
£65 per term  
Derek Geater 01933 381848/  
[dgartweb.sharepoint.com](mailto:dgartweb.sharepoint.com)

**German Tutorials**

Oundle area  
Gudrun 07710 189906/  
[gudvolk@gmail.com](mailto:gudvolk@gmail.com)





# DEENE PARK



www.lunaflix.co.uk

Online tickets: £13.00

Friday July 21

DEENE PARK OUTDOOR CINEMA



PRETTY WOMAN



OUTDOOR CINEMA IN THE WALLED GARDEN  
AT DEENE PARK, CORBY, NN17 3EW

**FRIDAY 21ST JULY 'PRETTY WOMAN' (15)**

Iconic, romantic and not to be missed – Tickets: £13.00

**SATURDAY 22ND JULY 'DIRTY DANCING' (12A)**

A cult classic celebrating its 30th anniversary –  
Tickets: Adult £13.00 Child (over 9yrs) £9.00

**For tickets visit: [www.lunaflix.co.uk](http://www.lunaflix.co.uk)**

Gates open at 8:00pm screening starts at 9:45pm

*Bring a seat, picnic and your favourite people.  
Pimm's bar, refreshments & BBQ available.*



**Oundle CURTAINS**

**HANDMADE  
READYMADE  
CURTAINS**

Prices are for a Pencil Pleat heading

Using our stock fabrics

*Examples:*

1 Pair 128cm width x 137cm drop  
**FROM ONLY £49.00**

1 Pair 192cm width x 160cm drop  
**FROM ONLY £79.00**

1 Pair 256cm width x 216cm drop  
**FROM ONLY £140.00**

Many more sizes in stock  
And only while stocks last

Don't forget our fantastic ranges of  
fabrics, blinds, poles and Swish fittings.

**COME AND SEE US AT**

Units 4/6 Eastwood Road,

Oundle PE8 4DF

**T: 01832 273078**

Opening Times

Monday to Friday 10am-5.30pm,

Saturday 10am to 4.30pm

or please book an appointment.

## Last Chance to Buy!

## Apartments for sale

*Luxury Living for the over 55s*

Keystone

Castle  
| COURT

Enjoy a complimentary two night stay  
in one of our exclusive apartments\*

\*Terms and conditions apply.

To book a viewing and for  
further details please  
contact Connells on:

**01536 411811**

**[castle.court@connells.co.uk](mailto:castle.court@connells.co.uk)**

Castle Court, Chancery Lane, Thrapston, NN14 4LL

**Connells**







# INVITATION TO SELL YOUR HOME

If you are thinking of selling your home, contact us now and we will arrange for one of our experienced valuers to visit at a time that is convenient for you.

**For a limited time only**  
**0.75% + VAT**  
selling fee's with  
**this advert**

Call our office in Rushden on:  
**01933 417317**  
[www.barkerandsmart.co.uk](http://www.barkerandsmart.co.uk)



[www.proadviceinsurance.co.uk](http://www.proadviceinsurance.co.uk)

**01933 417300**

It is not Barker and Smart's policy to accept instructions where there is already a Sole Agency Agreement in existence, until that Agreement has expired or is terminated.

## Classifieds

Deadlines for all classifications: 5pm Monday prior to issue date. A complete version of our Terms and Conditions can be found online at [www.nenevalleynews.co.uk](http://www.nenevalleynews.co.uk). Pay by credit/debit card or cheque. All major credit/debit cards accepted. For help and information please call 01522 513515 or visit [www.nenevalleynews.co.uk](http://www.nenevalleynews.co.uk)



### ACCOUNTANCY

#### Jon Essam & Co Ltd

Chartered Accountants

- Self Assessment Tax Returns
- Limited Company services
- VAT & CIS Returns
- New Business Start Ups and advice
- Payroll & Auto-enrolment services
- Sage & Xero specialists
- Free initial consultation

Tel: 01832 730280 Fax: 01832 730281  
[info@essamca.co.uk](mailto:info@essamca.co.uk) [www.essamca.co.uk](http://www.essamca.co.uk)

23 Cottingham Way, Thrapston,  
Kettering, Northants, NN14 4PL



### CARE HOMES

#### Rose Cottage Residential Care Home Woodford

For the elderly and dementia

We are a small care home with eight residents only.  
All rooms are single en-suite and ground floor.  
We provide respite care and day care.  
Telephone 01832 735417  
[www.rosecottagewoodford.co.uk](http://www.rosecottagewoodford.co.uk)

Follow us on Facebook



### HOLIDAYS

#### J&MB Travel

Coach Holidays

Date	Destination	Days	Hotel		Price
3 July	Lake District	5	Damson Dene	Lakeland Glory	£ 330
10 July	Scotland	5	Arrochar Hotel	Lochs, Rails & Nature	£ 365
14 July	Hayling Island	4	Mill Rythe HC	Tribute to the Greats	£ 195
17 July	Llandudno	5	Four Oaks Hotel		£ 240
23 July	Eastbourne	6	Alexandra Hotel		£ 315
28 July	Sandown	5	Trouville Hotel		£ 305
7 Aug	Weymouth	5	Crown Hotel		£ 290
13 Aug	Southport	5	Royal Clifton		£ 295
18 Aug	Paignton	4	Queens Hotel		£ 215
28 Aug	Huddersfield	5	Cedar Court Hotel	Moors & Merseyside	£ 269
4 Sep	Hemsby	5	Seacroft HC		£ 180

BOOK NOW FOR AUTUMN  
Bournemouth • Paignton • Blackpool  
All our Holidays depart from  
Corby • Kettering • Rushden • Wellingborough  
Prices are per person when sharing a double or twin room.  
Single room supplements are charged on some holidays.

Please Call for our Brochure  
**01536 202660**



### HOME IMPROVEMENTS

#### ALAN TAYLOR

For your local plastering

Boarding, Covering, Rendering  
All aspects of plastering. Enquiries welcome.  
Call Alan for a free quotation or advice on  
**01933 430098 or 07977 926717**

### KitchenDoor Solutions

Replacement doors and kitchen refurbishment  
Doors available in solid wood, painted and laminate finishes



Iain Smith

Tel: 01933 311310

Mob: 07583 869741

**SPECIALISTS**

**SINCE 1980**

### The WOODWORKS

Kitchen service

SPECIALISTS IN ALL ASPECTS OF KITCHEN REFURBISHMENT

Replacement Kitchen doors

Worktops supplied & fitted

Sinks, Taps & Appliances

Wardrobes built & fitted

Made to measure

Bathroom furniture



Update your existing kitchen to give  
you stunning looks, optimised storage  
space and increased accessibility

[WWW.WOODWORKS-KITCHENS.CO.UK](http://WWW.WOODWORKS-KITCHENS.CO.UK) Call now for a free no obligation quote  
Family business est 1999 **01933 449239**

### Simon Vale

Painter & Decorator

High quality • Competitive prices  
Free estimates

**07568 587367 or 01933 228671**

### Debbie Dawson & Son Interior Painters and Decorators

• Free estimates • Over 15 years experience

Tel: 01832 274652 Mobile: 07779 393458

**10% OAP DISCOUNT**

### !!!GET PLASTERED!!!

For all your plastering needs.  
No job too small, no fuss, no nonsense!  
Reliable and trustworthy service  
at the best possible price.  
Call Steve for free, friendly  
advice or a free quote.

**07703 720138 • 01933 430051**

### Ashby's Allsorts

Home Improvement & Handyman Services

Free Estimates

No Job Too Small

Inside and Outside Work Undertaken

Public Liability Insurance

Quality Work at Competitive Prices

Tel: 01832 771020

Mobile: 07584 673767

Email: [contact@ashbys-allsorts.co.uk](mailto:contact@ashbys-allsorts.co.uk)

[www.ashbys-allsorts.co.uk](http://www.ashbys-allsorts.co.uk)

Based in Thrapston, we service a radius of 30ish miles



Jon Spencer  
Technical Drawing  
Services

Plans drawn for planning and  
building regulation applications

**01933 316044**



**JW CLARK DRIVE IN & COLLECT**

Chowns Mill  
IRTHLINGBOROUGH  
NN9 5QQ  
Behind  
'The Old Mill'  
furniture warehouse

Ballast • Type1 MOT • Gravel • Sand • Topsoil  
All aggregates available for delivery or collection  
We also sell firewood & cement!  
01933 628273 [www.clark-aggregates.co.uk](http://www.clark-aggregates.co.uk)

**HOME SERVICES**

**PLUMBER**

All plumbing work undertaken - No call out charge

Toilet repairs - Dripping overflows - Leaks and bursts  
Garden taps installed - Tap repairs and replacements  
Radiators supplied and fitted  
20 years' experience  
Call Tim 01832 358248 or 07957 550660

**COSTUME JEWELLERY AND ALL UNWANTED JEWELLERY BROKEN OR PERFECT BOUGHT. ALSO OLD WATCHES AND COINS. ANY QUANTITY. JILL WILDING 01832 737803.**

**Easyflow Plumbing**  
Plumbing & Heating Services

Bathroom Installations  
Heating Systems  
General Household Plumbing

Tel: 07840 254 025 or 01604 946896  
roberttradford77@gmail.com

**Plumber — local & fast!**

**RGJ PLUMBING AND HEATING**

*Plumbing*

- Full bathroom installation (inc carpentry & tiling)
- Burst pipes & leaks
- Toilet repair/replace
- Taps, sinks repair/replace
- Showers repair/replace & pumps

*Heating*

- Full central heating installation
- Boiler servicing/breakdowns
- Landlord safety certificates
- Power flushing
- Radiators & valves
- Pumps & cylinders

No call-out charge!  
City & Guilds Qualified  
All work guaranteed

564016

01933 588005 or 07921 469471

**DONNO R G TV/AERIAL SERVICES**  
Est 1981

TV/DVD repairs, servicing at your home if possible.  
Full installation service available. Freesat and Freeview digital aeriels supplied and installed from £80. All work guaranteed.  
No call out charge locally. Free estimates on repairs.

**Tel: 01933 356680**

**Greys Painting & Decorating**

All Aspects Reliable Clean Professional Service  
Competitive Rates  
References Available  
Free Quotes  
Fully Insured  
All Small Jobs Welcome

01933 383 505  
07734 462 091

**PGR Plumbing & Heating**  
Tel: 01933 698116  
24 Hr Emergency Service  
Email: [pgrplumbing@btinternet.com](mailto:pgrplumbing@btinternet.com)  
Web: [www.pgrplumbing.co.uk](http://www.pgrplumbing.co.uk)

Specialists in  
Gas Installations

Gas Servicing & Maintenance  
Landlords Gas Safety Certificates

Central Heating Powerflushing  
Household Plumbing & Drainage

**CLEAR THE JUNK**  
**The Rose Clearance Service**

Full - Part - Single Items.  
Fully Registered and Insured. Est 30 years.  
[www.rose-clearance-services.co.uk](http://www.rose-clearance-services.co.uk)  
Tel: 07761 248266/01766 762671

**Part P Registered**

**A. SEATON ELECTRICAL LTD**

- Rewires, fuse board replacements
- Fault finding, extra sockets & lights
- Testing, inspection & certification
- No job too small, free estimates given

Email: [seatonsparky@gmail.com](mailto:seatonsparky@gmail.com)  
T: 01933 778504 M: 07952 249885

**LADY TILER**  
WALLS AND FLOORS

Friendly advice. No job too big or too small.  
Please contact Karen  
Tel: 01933 461295 / 07975 752580

**HANDY HERBERTS**  
Home & Garden Maintenance

All garden and exterior maintenance work undertaken including professional gutter cleaning, graveling, fencing, external painting and hedge trimming.

01933 563365 or 07725 225214  
[handyherberts@yahoo.co.uk](mailto:handyherberts@yahoo.co.uk)

**HOUSE CLEARANCE SERVICE**  
Saleable contents bought and cleared thoroughly, rubbish included.  
**Richard Wilding - 01832 737803**

**DC Heating**  
SAFE IN OUR HANDS

YOUR LOCAL PROFESSIONAL HEATING AND PLUMBING ENGINEERS YOU CAN TRUST

REPAIRS  
SERVICING  
INSTALLATIONS

Phone today for a free quotation on  
Tel: 01933 392 719  
[www.dcheatingengineers.co.uk](http://www.dcheatingengineers.co.uk)

**PET SERVICES**

*Country Companions Pet Services*

Services include:  
Doggy Day Care  
Dog Walking  
Puppy Visits  
Pet Sitting  
Cat Visits  
Home Boarding

Contact Sarah on:  
07766 523292  
[www.ccpetservices.co.uk](http://www.ccpetservices.co.uk)  
[sarah@ccpetservices.co.uk](mailto:sarah@ccpetservices.co.uk)

**REMOVALS**

**David Mallett**  
REMOVALS & GENERAL HAULAGE

For a **FREE** quotation call  
**Mob: 0788 996 8064**  
**Tel: 01832 731570**

Local Friendly Service

**JOBS BOARD**

**The Ferrers School**  
*"Aspire, achieve, acclaim"*

**HIGHER LEVEL TEACHING ASSISTANT (HLTA)**  
Grade G points 19 - 22,  
(actual salary £14,587.00 - £16,077.00)  
34 hours per week, 39 weeks per year  
(school term time plus five training days)

You will complement the work of teachers by assisting in both curriculum and pastoral areas of the college. Duties will include covering lessons if necessary for up to 50% of your time, providing support in faculty areas and mentoring individual students.

**TEACHING ASSISTANT (Level 2)**  
29 hours per week, 39 weeks per year,  
to cover school terms plus 5 training days  
Grade E points 10 - 12,  
(actual salary £10,215.00 - £10,607.00)

Candidates must have the ability to work well within a team, have good interpersonal skills and be able to communicate effectively with staff and students. You will provide support to students with additional needs including learning, behavioural, emotional, social and physical difficulties.

We are committed to the professional development of all staff and training will be provided.

**Closing date: 9.00am Monday, 5th June 2017**  
**Interview date: Week commencing 5th June 2017**

An application form and job description are available on our website: [www.theferrers.org](http://www.theferrers.org)

We are committed to safeguarding and promoting the welfare of young people and expect all staff to share this commitment. All posts will be subject to an enhanced DBS, medical and reference checks.

**PUBLIC NOTICES**

**NORTHAMPTONSHIRE COUNTY COUNCIL**  
**HIGHWAYS ACT 1980 — SECTIONS 65 AND 66**  
**SHARED USE CYCLEWAY / FOOTWAY**

NOTICE IS HEREBY GIVEN pursuant to Sections 65 and 66 of the Highways Act 1980 that Northamptonshire County Council proposes to install a shared use cycleway / footway at the locations detailed below:

**LOCATIONS**

- RUSHDEN LAKES ACCESS ROAD, RUSHDEN** — NORTH-WEST SIDE — FROM A POINT 210 METRES FROM ITS JUNCTION WITH SKEW BRIDGE ROUNDABOUT CONTINUING SOUTH-EAST TO THE PEDESTRIAN LINK AND A45 OVERBRIDGE (80 METRES IN LENGTH).
- NORTHAMPTON ROAD RUSHDEN** — SOUTH & EAST SIDE — FROM A POINT 30 METRES WEST OF THE JUNCTION WITH CROWN WAY CONTINUING EAST (ALONG NEW LINK ROAD) TO THE JUNCTION WITH BRINDLEY CLOSE (220 METRES IN LENGTH).
- BRINDLEY CLOSE, RUSHDEN** — BOTH SIDES — FROM THE JUNCTION WITH NORTHAMPTON ROAD CONTINUING IN A SOUTHERLY DIRECTION FOR A DISTANCE OF 19 METRES (19 METRES IN LENGTH).
- NORTHAMPTON ROAD, RUSHDEN** — SOUTH SIDE — FROM THE JUNCTION WITH BRINDLEY CLOSE, CONTINUING EAST FOR A DISTANCE OF 46 METRES (46 METRES IN LENGTH).
- NORTHAMPTON ROAD, RUSHDEN** — NORTH SIDE — FROM THE EASTBOUND EXIT OF THE ROUNDABOUT WITH BRINDLEY CLOSE FOR A DISTANCE OF 76 METRES (76 METRES IN LENGTH).
- CROWN WAY, RUSHDEN** — NORTH & EAST SIDE — FROM THE JUNCTION WITH NORTHAMPTON ROAD CONTINUING SOUTH-EAST FOR A DISTANCE OF 198 METRES (198 METRES IN LENGTH).
- CROWN WAY, RUSHDEN** — SOUTH SIDE — FROM A POINT 198 METRES SOUTH-EAST OF THE JUNCTION WITH NORTHAMPTON ROAD, CONTINUING SOUTH-EAST FOR A DISTANCE OF 55 METRES (55 METRES IN LENGTH).

A copy of the plans showing the precise locations of the proposed cycleway / footway may be inspected at Rushden Library, Newton Road, Rushden during normal opening hours or at The Traffic Orders Section, Riverside House, Riverside Way, Bedford Road, Northampton during normal office hours.

Any person wishing to make any comments regarding this proposal should forward them in writing, by 24th June 2017, to the Traffic Orders Section, Northamptonshire Highways, Riverside House, Riverside Way, Bedford Road, Northampton, NN1 5NX.

Dated this 3rd day of June 2017 PKG / N-325

To advertise in  
Nene Valley News  
please call  
**01522 513515**

**NORTHAMPTONSHIRE COUNTY COUNCIL**  
**ROAD TRAFFIC REGULATION ACT 1984 — SECTION 23**  
**PROVISION OF TOUCAN CROSSING**  
**NORTHAMPTON ROAD, RUSHDEN**

NOTICE IS HEREBY GIVEN that Northamptonshire County Council, in exercise of the powers conferred by Section 23 of the Road Traffic Regulation Act 1984, proposes to install a toucan crossing on the A5001 Northampton Road, Rushden as specified in the Schedule below.

A plan showing the exact location of the proposed toucan crossing is available for inspection until 24th June 2017 at Rushden Library, Newton Road, Rushden during normal opening hours or at the offices of the Traffic Orders Section, Riverside House, Riverside Way, Bedford Road, Northampton during normal office hours.

If you have any comments regarding the provision of the new crossing please write, by 24th June 2017, to The Traffic Orders Section, Riverside House, Riverside Way, Bedford Road, Northampton NN1 5NX.

Dated this 3rd day of June 2017 Ref:- PKG/N/326

**SCHEDULE**

Road	Location	Type of crossing
A5001 Northampton Road, Rushden	At a point approximately 30 metres west of the junction with Crown Way	Toucan Crossing

**NORTHAMPTONSHIRE COUNTY COUNCIL**  
**ROAD TRAFFIC REGULATION ACT 1984**  
**THE NORTHAMPTONSHIRE COUNTY COUNCIL (RUSHDEN LAKES, RUSHDEN)**  
**(30 MPH SPEED LIMIT) ORDER 2017**

NOTICE IS HEREBY GIVEN that Northamptonshire County Council propose to make an Order under Sections 82, 83, 84 and Schedule 9 of the Road Traffic Regulation Act 1984 ("the Act") to prohibit any motor vehicle from travelling at a speed exceeding 30 mph along those lengths of roads as specified in the Schedule below.

A COPY of the proposed Order, together with a plan showing the exact lengths of roads to which it relates and a statement of the Council's reasons for proposing to make the Order, may be inspected at Rushden Library, Newton Road, Rushden or at the offices of the Traffic Orders Section, Riverside House, Riverside Way, Bedford Road, Northampton during normal office hours.

**OBJECTIONS** to the proposed Order, stating the grounds on which they are made should be sent in writing to the Traffic Orders Section, Riverside House, Riverside Way, Bedford Road, Northampton NN1 5NX by 24th June 2017.

Dated this 3rd day of June 2017

**QUENTIN BAKER**  
Director of Law & Governance PKG/1713

**SCHEDULE**  
**30 MPH SPEED LIMIT**

**Rushden:**

- Northampton Road from a point 250 metres west of its junction with Hayway to a point 19 metres east of its junction with Skew Bridge roundabout.
- Northampton Road from a point 25 metres south of its junction with Skew Bridge roundabout to a point 20 metres northwest of the roundabout with Wellingborough Road.
- Northampton Road (new link road) from its entry point 40 metres southwest of the junction with Skew Bridge roundabout to its entry 50 metres southeast of its junction with Skew Bridge roundabout.
- Rushden Lakes Access Road from its junction with Skew Bridge roundabout for its entire length.

**NORTHAMPTONSHIRE COUNTY COUNCIL**  
**ROAD TRAFFIC REGULATION ACT 1984 - SECTION 14**  
**THE NORTHAMPTONSHIRE COUNTY COUNCIL (EAST ROAD, OUNDLE)**  
**(TEMPORARY PROHIBITION OF THROUGH TRAFFIC) ORDER 2017**

NOTICE IS HEREBY GIVEN that Northamptonshire County Council intend, not less than seven days from the date of this Notice, to make an Order the effect of which will be to prohibit traffic from proceeding along that length of East Road, Oundle as specified in the Schedule below.

**REASONS FOR RESTRICTION:** The restriction is required for safety during installation of BT ducting and manhole works.

**PERIOD OF CLOSURE:** The proposed Order will come into effect on 27th June 2017 and will continue in force for a period of eighteen months. An application may be made for the approval of the Secretary of State for Transport for the Order to be extended if this proves necessary. However, the restriction specified will have effect only at such times and to such an extent as is indicated by the display of signs prescribed by the Traffic Signs Regulations and General Directions 2016.

**EXPECTED DURATION:** It is expected that the road will be restricted in two sections for two days per section.

**ALTERNATIVE ROUTES:** use South Road, Mill Road, West Street, Market Place, North Street and Station Road.

Dated this 3rd day of June 2017

**QUENTIN BAKER**  
Director of Law & Governance PKG/T17/184

If you require any further information please contact Gary Thorp on 01604 883400.

**SCHEDULE**  
(Lengths of roads to be closed)

East Road, Oundle — section 1 — from St Osyth's Lane to Taney Court.  
section 2 — from Station Road to Ashton Road.





By Derrick Sims

**NCA Quickplay Competition**

The NCA Quickplay Championship was held this year at Kingsley Park WMC, Chess Mates' venue in Northampton. The tournament was organised by Northampton Chess Supremo Greg Smith. Greg was responsible for resurrecting the competition back in 2014 after it had been allowed to lapse many years ago, making this the fourth time it has been played since then.

The format of the competition is four-man teams with each player having a flat time control of 15 minutes. 2014 saw six teams competing and last year there was a record entry with ten teams taking part. This year the numbers of entries were down to eight due to Corby being unable to field a team

and Rushden only managing to raise one team as opposed to two last year. A total of four rounds were played.

The 'inaugural' Championship held in 2014 saw Chess Mates taking the honours, 2015 proved to be Kettering's year as they defeated teams from Chess Mates and Chesspoints. Last year Rushden's A team swept the board with victory in all five rounds, they were greatly helped by a first rate performance from Nik Puryer. This year Nik was transformed 'Dr Who' style into James Gardner, who was victorious in all his games. Hugh Murphy also performed well with two victories and two draws. Despite these excellent performances Rushden could only manage sixth place on the evening. The spoils of

war went Kettering's way who claimed the top two places. It is reported that Kettering 'borrowed' a couple of players from Chess Mates on the evening and one can only congratulate the Northampton Club's generosity and selflessness in ensuring their own defeat!

Chess is a game for people of all abilities, disabilities, and life styles. Rushden Chess Club loves welcoming new members, so do come along to a meeting if you're interested in playing chess in a very friendly environment. The club opens most Monday's from 6pm for Junior players – for details please call the Club Secretary on 01933 625767, or visit the club website <http://rushdenchessclub.com>.

Team	Won	Lost	Drew	Boards +	Boards -	Points Total
Kettering C	2	0	2	10	6	6
Kettering A	2	1	1	9	7	5
Chess Mates A	2	1	1	8½	7½	5
Kettering B	1	1	2	8½	7½	4
Chess Mates C	1	1	2	8	8	4
Rushden	1	2	1	7½	8½	3
Northampton	1	2	1	6	10	3
Chess Mates B	1	3	0	6½	9½	2

Celebrating 40 Years in Business

gsiinsurance

Commercial And Personal Insurance Experts

Motor Insurance

Home Insurance

Landlord Insurance

Fleet Insurance

Motortrade Insurance

Commercial combined

Offices open 9.00am till 6.00pm Monday to Friday, with extended hours on Wednesdays till 8.00pm

01933 411 888

[www.gsiinsurance.co.uk](http://www.gsiinsurance.co.uk)

16 North Street - Rushden - Northamptonshire - NN10 6BU

GSI Ltd is authorised and regulated by the Financial Conduct Authority (FCA). Our FCA registration number is 304766 and this can be confirmed on the FCA register at [www.fsa.gov.uk/register](http://www.fsa.gov.uk/register)