

Nene Valley

news

Your local independent community newspaper for East Northamptonshire

Telephone:
01522 513515

We want to hear from you, so please submit your news story or event at www.nenevalleynews.co.uk

Inside...



Spotlight on Rushden

Page 4



East Northamptonshire Council helps with Woodford path work

Page 8

Volunteers sought to boost Scouting activities in the district

Looking for a 2018 Challenge? Scouting offers fun, friendship and everyday adventure to 400,000 young people and 100,000 volunteers across the UK.

The Scout Association helps 6 to 25 year olds grow in confidence, achieve their full potential and become active citizens of the future.

Scouting happens right here in this community too, so you can be part of it. You are rarely more than

10 miles from your nearest scout group. So, are you active? The Scouts certainly are.

With over 200 adventurous activities from archery to zorbing there's rarely a dull moment. Scouts are regularly involved in camping, canoeing, climbing and abseiling

but also get to try arts and crafts, musical activities, drama and photography too. There are many community focused projects, from tree planting to recycling and helping older people get online. Scouts are active members of their communities.

Scouting is growing, offering everyday adventure to young people aged 6-25, so the Scouts are always looking for adults to join the adventure. Scouting is for everyone regardless of class, religion, colour, gender or sexual orientation.

All Scout leaders are volunteers; they have as much fun as our young people, gaining qualifications and improving their CVs. They offer flexible leadership roles and if you can give as little as an hour a month, you can volunteer for Scouting.

From behind the scenes roles to helping directly with young people, there's room for everyone. Why not find out more, and see where

new opportunities are by emailing nenevalleydc@northantsscouts.org.uk

An 'Open Evening' will be held on Wednesday 24th January for prospective young people and adults looking to become leaders. The venue for this event will be Thrapston Primary School, Market Road, NN14 4JU.

There will be what's called the 'Four Week Challenge', where volunteers come along assisted by current leaders from Nene Valley District and run a programme for the young people.

Nene Valley Scout District is growing rapidly and more adults are needed to join the adventure. So, whether you live in Rushden, Higham, Raunds, Irthlingborough, Ringstead, Woodford, Thrapston, Oundle or Nassington & Kings Cliffe, or anywhere else in Nene Valley, get in touch if you feel you could volunteer as a leader, parent helper, executive member, quartermaster or as a specialist activity person.

For the Scouts to keep growing, more adult support is needed.



In Brief

Looking for something new?

Got an interest in local heritage? Nene Valley Community Action is looking for volunteers to take part in its 1918-2018 'Then & Now' project. Small groups of young and old people will look back over the past 100 years and see what changes have taken place. Each group will share memories and stories and take part in simple activities. Starts Monday 15th January in Rushden, looking at food and cooking. To join in, email info@nvca.org.uk or Tel: 01933 396382.

Donation for hospice

Peter Crisp has presented a cheque for £1,320 to Shelley Green, the Fundraising and Development Manager at Cransley Hospice, following their annual Christmas Charity Day held in December. The craft stalls in the kitchen showroom sold everything from handmade cards and pottery, Christmas gifts and decorations, handbags, scarves and jewellery. Alongside this, they had a cake stall, raffle and silent auction.

**RECEPTION CLASS
OPEN MORNING**
Friday 9th February 2018

9.30am-10.00am - Arrival

10.00am - Head's Address followed by a presentation

10.30am-11.30am - Time with our Reception classes

Call or email Ms Lesley Taylor, Registrar

T: 01832 277159 E: lat@laxtonjunior.org.uk www.laxtonjunior.org.uk



Laxton
Junior School

OUNDE



Talented local through to the Grand Final of Britain Does Variety 2018

Tracey Barker from East Northamptonshire has been given the big thumbs up by judges at the Britain Does Variety Regional Final. Along with other impressive acts, classical singer Tracey has made it through to the Grand Final.

Britain Does Variety has been touring the nation looking for the greatest talent Britain has to offer and finalists from the different regions are now set to perform in the National Grand Finals at Castle Theatre, Wellingborough on Saturday

13th January.

From contortionists to singers and vocal groups, dancers to jugglers, beatboxers to illusionists, comedians to magicians... there's a huge variety of acts showcasing their talents in front of a panel of industry and TV judges, plus a variety of agency talent scouts.

Britain Does Variety is about showcasing real talent – there are so many unique entertainers in the UK, but so few chances for them to perform. Britain Does Variety aims to put that right.

Genealogy jottings

Scottish birth certificates were covered last time but now we come to marriage certificates.

For both the bride and groom it will show:

- Name and surname
- Usual or present residence address
- Age
- Rank or profession
- Condition (bachelor, spinster etc)*
- Birthplace and when/where it was registered
- Parents' names (including mother's maiden name) and their occupation
- If a Regular marriage, the signature of the minister and witnesses
- If an Irregular marriage, the date of extract sentence of conviction or decree of declaration and in what court pronounced **
- When and where registered and signature of registrar

The wonderful difference between the English/Welsh marriage certificates and those from Scotland is that they contain details of the happy couple's mothers – including the mother's maiden name. This helps considerably when trying to track down the correct birth certificates.

The certificate will also provide details of when and where the marriage took place,

By Jan Pearson
Genealogy Specialists, Tracing Our Past, Discovering Our Genes (TOP DOG)
www.genealogy-specialists.com

whether or not Banns were read or if it was by licence.

*If the person was a widow or widower, it was also stated if this is their second or third marriage. A note of the number of children (living or dead) from any previous marriage was also recorded.

**An Irregular marriage could result from mutual agreement, by a public promise followed by consummation, or by cohabitation.

A few words about Irregular marriages: Some people think that 'living in sin' was invented in the 1960s, but it is an age-old practice – especially before matrimonial laws made divorce more accessible. Bigamy was known as the 'poor man's divorce'!

A Regular marriage meant that Banns were read on three consecutive Sundays in Church and a licence obtained. An Irregular Marriage was with a mutual agreement and couples presented themselves as husband and wife. They would just make a public promise.

Want to place an advertisement or submit an article?

If you wish to contribute or have any comments please email news@nenevalleynews.co.uk or call 01522 513515. To advertise, call 01522 513515. Alternatively you can email advertising@nenevalleynews.co.uk

If you are not receiving your copy of Nene Valley News, please email distribution@km-media.co.uk or telephone 01522 513515.

If you would like to receive this publication as a download, Nene Valley News is available online as a pdf at www.nenevalleynews.co.uk.

You can also subscribe to Nene Valley News for £39 per annum.

Nene Valley News is produced by KM Media & Marketing, County House, 9 Checkpoint Court, Sadler Road, Lincoln, LN6 3PW.

Copy dates for Nene Valley News

Publication date: Saturday 27th January
Articles to the editor by: Wednesday 17th January

Publication date: Saturday 10th February
Articles to the editor by: Wednesday 31st January

KM
KM Media & Marketing
Your partner in publishing
ONLINE | IN PRINT | IN DIGITAL

Editor's notes

Another New Year and we hope it will be happy and prosperous for all our readers! How are the resolutions faring? Most people seem to focus on diet and exercise but this edition of the Nene Valley News offers plenty of opportunities to expand your activities and help others by giving a little of your time to things like Scouting, Community Action, the Walking Scheme or helping out at Fineshade Wood. Why not add another dimension to your activities in 2018?

Perhaps this year will bring changes in the way Northamptonshire County Council manages its finances! The Secretary of State for Housing, Communities and Local Government, Sajid Javid, has announced that there is to be an investigation into financial management at County Hall. This after concerns were raised by Conservative MPs in Northamptonshire following Northampton North MP Michael Ellis speaking out for the first time about the County's financial position. The Secretary of State can commission an independent inspection to better understand whether a council is complying with its duty of 'Best Value', which is a legal requirement to ensure good governance and effective management of resources. The Secretary of State has now has appointed Max Caller CBE to complete a report.

Sajid Javid said: "My decision to appoint

an inspector is not taken lightly. I hope it sends a strong signal that robust processes are in place to investigate allegations of failures in financial management and governance in local government. I have asked the inspector to report findings to me by 16th March 2018, or such later date as the inspector agrees with me."

Leader of the council Councillor Heather Smith said: "We welcome the announcement that the government will be conducting a best value inspection in Northamptonshire. We have been very clear with senior government ministers and civil servants about the issues facing the county and the growing financial pressures we are facing. This announcement means they will be coming to the county to assess the situation for themselves and be able to see how we have continued to deliver public services in an ever-challenging financial context.

"We have been fully open and transparent with the government about our situation and have been direct in our request for assistance. We have also been clear that our proposed funding settlement from them includes no recognition of the pressures we face with the escalating cost of, and demand for, adult social care and children's services respectively. We look forward to the next stage of the conversation that this inspection will necessitate."

The Foot Clinic
at
Images

128 Newton Road
Rushden
Northants

Rose Wesley
MCFHP MAFHP

All aspects of foot healthcare including:

- Nail Cutting
- Corn Removal
- Ingrowing Toenails
- Hard Skin Removal
- Fungal Nail Treatment
- Verruca Treatment

Open
Wednesday to Saturday

07854 514323
01933 318902

BODY BALANCE

The Yoga, Tai Chi, Pilates workout that builds flexibility and strength and leaves you feeling centred and calm.

First class free when you mention this advert

Classes at Manor School, Raunds

Tuesdays 7-8, Thursdays 7.30-8.30
£5 per class or 10 classes for £45

For info call **07525 816911** or email manorfitness@hotmail.co.uk

Rushden Golf Club

Membership Available
7, 6 and 5½ day memberships available
Special Rates for under 30's

Members Lunch Time Specials – 2 FOR £12
Our 2 for £12 specials covers a range of popular meals. Prefer a lighter bite then we also have a choice of teacakes, sandwiches, baguettes and jacket potatoes.

Open from 10.30am daily, Rushden Golf Club, Kimbolton Road, Chelveston, Wellingborough, Northants, NN9 6AN

01933 418511
www.rushdengolfclub.org

EAST MIDLANDS MUSIC

Guitar accessories now in stock

01733 788 733

The Stables, Rectory Farm Offices, Warmington PE8 6UT

info@eastmidlandsmusic.com
www.eastmidlandsmusic.com

Lights, Camel, Action!

Pupils from Years 1 and 2 at Laxton Junior School delighted family and friends with a superb performance of their Christmas play.

Broadcast directly from Bethlehem, Lights, Camel, Action! celebrated the birth of Jesus and included a cast jam-packed with nativity

celebrities, including innkeepers, funky camels, the disco star, angels, shepherds and sheep who tangoed, balleted and Morris danced in order to

wow the judges.

The audience were also treated to a wonderful song led by Joseph. Performing for three judges, Caesar, the innkeeper's wife and the donkey, each act was scored on its artistic flair and the retelling of its role in this traditional story of the birth of Jesus.

Head, Mr Robertson commented: "Once again, our children and staff have raised the bar and produced a show that soared beyond our expectations; our young, talented performers sang, danced and acted their hearts out, and had the audience of families and special guests captivated throughout. As a school, we could not be prouder of their efforts as they have shown that, even when you are 5, 6 and 7 years old, you can still dazzle on the big stage!"



Neighbourhood planning update: Rushden and Glapthorn

Progress continues to be made within Neighbourhood Plans throughout East Northamptonshire. Neighbourhood Plans allow communities (led by Town and Parish Councils) to set their own (Town/ Parish) level planning policies for determining planning applications, adding local direction and distinctiveness to East Northamptonshire Local Plan and national planning policies.

The Raunds Neighbourhood Plan was 'made' (adopted) by East Northamptonshire Council on 27th November 2017. Other Neighbourhood Plans have now reached significant milestones.

- Rushden Neighbourhood Plan was submitted on 26th October 2017. This was followed by a statutory (procedural) consultation under Regulation 16 of the Neighbourhood Planning (General) Regulations 2012; 3rd November – 18th December 2017 (inclusive). The examination for the Rushden Neighbourhood Plan has now started and it is anticipated that the Examiner will finalise his report by the spring, which should enable the Plan to go to referendum in May 2018.
- Glapthorn Neighbourhood Plan 2016-2031 was submitted on 14th December 2017. It is now the subject of a statutory (procedural) consultation under Regulation 16 of the Neighbourhood Planning (General)

Regulations 2012; due to finish on Monday 26th February 2018. If successfully passed at Examination (anticipated by early summer), it is likely that this will go to referendum late in the summer.

- Consultation for the Oundle Neighbourhood Plan 2011-2031 (1st draft/ Regulation version) is expected to start in January (<http://www.oundle.gov.uk/neighbourhood-plan.html>). This is the first stage consultation, which relates to the content and details of the Plan.

The Neighbourhood Plans for Brigstock and King's Cliffe (first draft versions were published for consultation last year) are also likely to be submitted for Examination during 2018. Other draft Neighbourhood Plans may also be published over the coming months.

Meanwhile, communities continue to express an interest in neighbourhood planning. To date, 17 Neighbourhood Areas have been designated; most recently the Parish of Ringstead, which was confirmed on 4th December 2017.

Further information regarding neighbourhood planning is available through East Northamptonshire Council's Planning Policy and Conservation team: Tel: 01832 742010, Email: planningpolicy@east-northamptonshire.gov.uk, www.east-northamptonshire.gov.uk/neighbourhoodplanning

Regent Wrought Iron Ltd The Regent Street Wrought Iron Works
180-186 Regent Street Kettering Northants NN16 8QH Phone 01536 485892
High Quality Gates and Fencing Hand Made on the Premises since 1963

Visit our website for our Online catalogue www.regentiron.co.uk

Single gates from	£80.00
Side entry from	£99.00
Double gates from	£120.00

We have 18 styles to choose from
All on show in our showroom
Full fitting & painting service.

Automatic Estate Gates

- Highest Quality Equipment
- Up To 14' Opening
- Flat Draped or Bow topped
- Fully Installed & Painted
- FREE First Year Service
- Guaranteed for 2 Years
- Full back up & yearly service
- We have been installing automation since 1998
- Fully Pressure tested and certified to BS 12453

We can automate your existing gates (if suitable) or upgrade old equipment to meet BS 12453 safety regulations

Beat The Burglar
Free security locking bolts
Fitted to all our side entry gates
Or full range of mortise locks fitted

Has your garden wall / fence had it? Replace it with wrought iron!
LASTS A LIFETIME USUALLY FITTED IN A DAY.

Quality Repairs To Windows & Doors

THRAPSTON GLAZING
Est 85 **WINDOW & DOOR REPAIRS**

FREE QUOTES FREE GENUINE ADVICE

QUALITY REPAIRS TO ALL MAKES OF WINDOWS, DOORS AND CONSERVATORIES SUPPLIED AND FITTED BY ANY COMPANY.

REPLACEMENT GLASS UNITS, NEW LOCKS, NEW HINGES, NEW LETTERBOXES, NEW HANDLES ETC... WITH COMPLETE FITTING SERVICE

WE ALSO SERVICE WINDOWS, DOORS AND PATIO DOORS ADJUSTING AND LUBRICATING AS WE GO, BADLY ADJUSTED DOORS ARE THE MAIN REASON FOR LOCK FAILURE.

WE STOCK AND SOURCE THOUSANDS OF SPARE PARTS TO SUIT ALL MAKES OF WINDOWS AND DOORS

OTHER SERVICES INCLUDE, CUT GLASS, TOUGHENED GLASS AND GREENHOUSE GLASS ALL DELIVERED TO YOUR DOOR WITH FITTING SERVICES IF REQUIRED.

ALL OUR FITTING ENGINEERS HAVE OVER 30 YEARS EXPERIENCE WORKING FOR US.

PLEASE CALL OR EMAIL US FOR A FREE QUOTATION

01832 734570
www.thrapstonglazing.co.uk
windowanddoorrepairs@talktalk.net

Free Quotations • No Obligation

Locks • Hinges • Glass Units • Adjustments • Servicing • Letterboxes • Handles • Window Locks • Door Locks

Cake Decorating Supplies
For Amateurs, Professionals and Enthusiasts

Cake Boards, Boxes, Dummies, Cutters, Tools, Edible Glitters, Glues, Toppers, Picks, Plungers, Stencils, Pens, Brushes, Icing, Ribbons, Wires, Decorations, Accessories and more. Come & browse!

From the basics - Sugar Paste, Cake Boxes and Boards to Cake Lace, Moulds and Cutters
We have all the Baking and Cake Decorating supplies to complete your Wonderful Creations!

SCS packaging Shop open 7am till 5pm Monday to Friday
Orchard Road, Finedon, Northants NN9 5JG
Tel 01933 681 681 www.scspackaging.co.uk

DB FACTORY SHOE STORE

LARGEST CHOICE & BEST PRICES

New Styles NOW IN

Wide feet or foot problems?
WE CAN HELP! Visit our specialist shoe fitting centre (on the same site)
Call 01933 410305
www.widerfitshoes.co.uk
Opening times: Mon - Sat 10am - 4pm

Opening times: Mon - Sat 10am - 5pm.
Sun 10am - 4pm.
www.dbfactoryshop.co.uk
DB Shoes Ltd, 19-21 Irchester Road, Rushden, Northants NN10 9XF

Heavenly Feet

10% OFF WITH THIS ADVERT
Quote: NVX1750F
Valid until 15/05/18

FREE ROADSIDE PARKING

SKECHERS **DUNLOP**

IT4me.UK
Home & small business IT support, training & consulting

- Slow computer speed boost
- 2nd hand internet ready computers for sale
- Family safety and online privacy help
- Training to get more out of your computer
- Virus removal
- PC reincarnation for old machines
- IT guy for small businesses

0750 77 555 15 • grant@it4me.co.uk
www.it4me.uk • www.fb.me/it4meuk2
Like our Facebook page for discounts

Spotlight on Rushden



Cenotaph and Church

Rushden is the largest town in East Northamptonshire with a population of 30,000 people. The town has a wealth of history dating back thousands of years with indications of there being Bronze and Iron Age settlements in the area as well as Roman sites found nearby.

Rushden Town Council is working jointly with the centre management team at Rushden Lakes to pull together ideas that encourage visitors to not only visit Rushden Lakes but to venture further afield and explore the culture and heritage within Rushden. The Explore More campaign includes the installation of new signage focussing on access routes in and around Rushden; the project also highlights the offer from the traditional independent high street shops. Rushden high street provides a variety of services that are not available from the national retail stores – services such as the local banks, post office, libraries, craft and haberdashery shops, shoe repairs, clothing alterations, tailoring services and more. The project is growing all the time and is set to encourage business and visitor crossover throughout all areas of the town. The scheme includes opportunities for local businesses to promote themselves from Rushden Lakes.

A community board is available at Rushden Lakes (near the visitor centre)



High Street

for use by the local community, Rushden Town Council make excellent use of this opportunity, visiting on a weekly basis to update the information on all local events and activities. Anyone wishing to have a poster or information displayed in the community board please email info@rushdentowncouncil.gov.uk

Rushden Town Council has recently launched its own official Facebook page @rushdencouncil. Please like and share the page and we will keep you updated on local events.

Rushden has an abundance of community groups and charitable organisations, all of which offer fun and activity for all the family. Here are some of the many exciting activities and events that are planned for 2018.

Events in Rushden in 2018:

- The Mayor's Civic Charity Concert by the Band of her Majesty's Royal Marines Collingwood at Rushden Bowling Club on Saturday 3rd February
- St George's Day celebrations on Saturday 21st April
- Rushden Cavalcade will be celebrating its big 40th year on 5th–7th May
- A week long Celebration of Rushden to

include the annual Soap Box Derby in Hall Park takes place 9th–16th June

- Rushden Armed Forces Day on Saturday 23rd June
- Rushden's Party in the Park on Saturday 14th July in Hall Park
- SwivelFest 2018 in Hall Park on Saturday 11th August
- Proms in the Park on Saturday 1st September
- Bark in the Park Dog Show in Hall Park Walled Garden on Sunday 2nd September
- Rushden Feast 14th–22nd September
- Bernard Vann Memorial Service on Saturday 29th September
- Rushden Fireworks night organised by Nene Valley District Scouts Association on Saturday 3rd November
- The Royal British Legion Remembrance Service and Parade on Sunday 11th November
- Annual Christmas Lights Switch-On in the High Street on Saturday 24th November

Rushden Town Partnership

Rushden Town Council works closely with Rushden Town Partnership (RTP),



Wesleyan Church

RUSHDEN TRANSPORT MUSEUM & RAILWAY

UPCOMING 2018 EVENTS

- MARCH 11TH - MOTHERS DAY
- APRIL 1ST - 2ND - EASTER SPECIAL
- APRIL 7TH - 8TH - RC TRUCK WEEKEND
- APRIL 7TH - FISH & CHIP SUPPER
- APRIL 21ST - MURDER MYSTERY
- MAY 5TH - 7TH - CAVALCADE OF TRANSPORT
- JUNE 17TH - FATHER'S DAY / WHAT YOUR DAD DROVE
- JUNE 23RD - ARMED FORCES AFTERNOON
- JULY 7TH - 8TH - TEDDY BEARS PICNIC
- AUGUST 24TH - 27TH - SAUSAGE & CIDER FESTIVAL
- SEPTEMBER 8TH - 9TH - MODEL WEEKEND
- SEPTEMBER 28TH - 30TH - MUSIC & REAL ALE FESTIVAL
- OCTOBER 6TH - FISH & CHIP SUPPER
- OCTOBER 20TH - 21ST - LMS BRANCHLINE AT WAR
- OCTOBER 27TH - HALLOWEEN SPECIAL
- NOVEMBER 10TH - CURRY NIGHT
- DECEMBER 8TH - 9TH - SANTA SPECIAL
- DECEMBER 15TH - BRUNCH WITH SANTA
- DECEMBER 28TH - MINCE PIE SPECIAL

FOR MORE INFORMATION SEE
WWW.RHTS.CO.UK

RUSHDEN TRANSPORT MUSEUM
RUSHDEN STATION
STATION APPROACH
RUSHDEN
NORTHAMPTONSHIRE
NN10 0AW
0300 3023 150



Samantha Civil BSc (Hons) MChS HCPC Reg Podiatrist

We offer treatment and advice for a wide range of foot and lower limb conditions including:

- Corns and calluses
- Dry, cracked heels
- Thick, discoloured or painful toe-nails
- Verrucae
- Heel pain
- Arch & ball of foot pain
- Bunions & other toe deformities
- Fungal infections
- Nail surgery for ingrown nails

We also offer biomechanical examinations for both adults and children and can prescribe insoles and orthotics, where appropriate.

Knights Farm, Newton Road,
Rushden NN10 0SX
Tel: 01933 353732
Mob: 07786 265192
rushdenpodiatry.co.uk

a community organisation that was set up to develop a genuine and effective partnership with businesses and community groups in Rushden. Details of how businesses and organisations can join the partnership can be found at www.rushdentown.org.uk. RTP organise regular networking opportunities for local businesses and community groups, the next business networking meeting is scheduled for Tuesday 23rd January 2018 at The Sally Ann Café 16-20 Church Street, Rushden.

Shop Front Grants Scheme

Rushden Town Council are pleased to continue their support for local businesses through a Shop Front Grants scheme. The scheme is open to all businesses who need help with the refurbishment of shop fronts up to a maximum of £500. To obtain further details please visit <http://www.rushdentowncouncil.gov.uk/> or contact the town clerk for an application form.

For more information about the town please contact Rushden Town Council, Rushden Hall, Hall Park, Rushden NN10 9NG. Tel: 01933 316216 or email info@rushdentowncouncil.gov.uk

Jewkes Bridal

Looking for that special gown? Why not pay a visit to Jewkes Bridal.

We are a friendly, family run business dedicated to providing a memorable experience for our brides.

Our bridal gown prices range from £200 to £800 and our bridesmaid range starts at £115.

All of our alterations are done in house to ensure our high quality.

Our opening times are as follows: Tuesday-Friday: 10am-2pm and 6pm-8.30pm, Saturday: 10am-5pm.

Why not come along to our shop: 20 High Street, Rushden NN10 0PW or give us a call on; 07553 187128, www.facebook.com/jewkesbridalsales

Shoulder Solutions

Shoulder pain is a real nuisance. You can't lift your arms above your head to put cups in the cupboard, putting your arms into your winter jerseys is awkward, the pain at night is terrible, and you can't hug anyone!

Good news for shoulder sufferers in Rushden and Higham: The Ashgrove Clinic might have the solution for you.

Owners of the clinic, Claire Short and Steven Bruce, managed to get internationally renowned shoulder expert Simeon Niel Asher to come to the UK last year to teach his well researched shoulder technique. Osteopath Ruth Walker says: "It's really exciting seeing patients improve using this technique. They've usually been told that nothing can be done to help them. As the pain decreases and the movement increases patients look so happy."

Rushden resident Mariann Turff says, "After treatment it was such a relief to be able to sleep again!"

At the clinic you find easy parking, evening appointments to fit with your many commitments, experienced and friendly osteopaths, and good coffee for the relatives who bring you when you're in too much pain to drive.

They also offer a FREE 20-minute consultation to see if treatment can help you.

Claire Short, Registered Osteopath, Ashgrove Health, 01933 469043, www.ashgrovehealth.co.uk, claire.short@ashgrovehealth.co.uk

Rushden Transport Museum

When you visit Rushden Transport Museum don't forget to visit our 1930s restored Gresley Buffet Carriage situated at the far end of the site, just beyond the signal box. We are open on event days offering hot and cold drinks plus sandwiches and rolls made to order. We are especially well known for our delicious homemade cakes and scones. Vintage



Rushden Transport Museum

Afternoon Teas are also offered but need to be booked in advance.

Our carriage is also available to hire for private functions and we can cater for most dietary needs and disabled access is always available.

For further information please contact us on catering@rhts.co.uk or 07821 269043.

Rushden Podiatry

What is a Podiatrist? This is simply the modern name for a chiropodist and is the internationally recognised title for a foot specialist. Podiatrists diagnose and treat conditions of the feet and lower limbs. Registration with the Health and Care Professions Council is achieved after completing a three-year degree course in

Podiatry.

Rushden Podiatry recently relocated from Raunds to Knights Farm. Samantha has over 20 years of experience in a variety of specialities and believes in providing patients of all ages with a thorough and holistic approach to treatment. The clinic is modern and well equipped with ample parking and easy access. We open every day and offer evening and weekend appointments also.

If you would like a chat about any foot health concerns please give us a call on 01933 353732 or email us on samantha@rushdenpodiatry.co.uk

Further information about the services we offer is available on our website Rushdenpodiatry.co.uk.

Jewkes Bridal
20 High Street,
Rushden NN10 0PW

**Wedding dresses
from £200 to £800**

07553 187128
www.facebook.com/jewkesbridalsales

Have you been suffering from SPORTS INJURIES OR BACK PAIN? It's time to do something about it and get back to your sport!

Before I went to The Ashgrove Clinic I was unable to do any physical exercise at all. I was struggling to walk more than 100 yards without spasms. I'm now back in training: they fix me when I'm broken!

I Anderton (Boxer)

”

**BOOK YOUR
FREE
20 MINUTE
CONSULTATION
TODAY**



Take action now...

You can get a FREE initial consultation with The Ashgrove Clinic and make the first step to a pain-free life today!

Your 20 minute consultation with one of our friendly osteopaths will...

- Offer bespoke advice
- Give you 1:1 individual analysis on how to improve

And we'll get started right away.

So, if you're in pain, if you're not competing as well as you should be, if an old injury is nagging at you, or if you keep pulling a muscle, make the first step to your recovery today.

At The Ashgrove Clinic we work to find the cause of your discomfort, **treating your injury at the source, not just the symptoms.** To fix your injury we have specialists in sports therapy, osteopathy, massage, gait analysis, ultrasound, kinesio taping, TENS, acupuncture, cupping, rehab exercises and myofascial work.

**Call 01933 328020
now to book your
FREE consultation!**

The
Ashgrove
Clinic

www.ashgrovehealth.co.uk | 01933 328 020

13 Lancaster Street, Higham Ferrers, Rushden, Northamptonshire, NN10 8HY



MAYOR'S AWARDS 2017-2018

Rushden Town Council is seeking nominations for the Mayor's Awards for Services to the Community for the year 2017 / 2018. The Mayor's Award is given to an individual for their work and commitment within the community of Rushden over a number of years. (Group nominations will not be eligible for an award.)

Please submit the name and address of nominees, together with details of the reason for their nomination, to the Town Clerk at Rushden Town Council, Rushden Hall, Hall Park, Rushden, Northants, NN10 9NG, or e-mail the Town Clerk at info@rushdentowncouncil.gov.uk. All nominations should be received by **Friday 23rd February 2018.**



Notice of planning applications received

<p>Notice is given that the following applications have been received together with the last date for making representations:</p> <p>Aldwincle 17/02560/FUL (27/01/2018) (Info) Two 2 storey dwellings with access path, Access drive and six parking spaces including 2 for existing bungalow. Proposed dwellings to be sited at bottom of rear garden at 10 Cross Lane Aldwincle NN14 3EG</p> <p>Ashton 17/02502/FUL (27/01/2018) (Info) Erection of an agricultural barn and access track from the public highway (part retrospective) at TL05603 87657 Polebrook Road Ashton</p> <p>Benefield 17/02445/FUL (03/02/2018) (LB/CA) Dutch barn for storage of corn, hay, straw and farm machinery in existing farmyard to replace old pig shed at Hill Farm Glapthorn Road Upper Benefield PE8 5AL</p> <p>Brigstock 17/02567/FUL (27/01/2018) (Info) Erection of detached dwelling and detached triple garage with studio above at 1 Hunter Rise, Brigstock</p> <p>Duddington With Fineshade 17/02040/FUL (03/02/2018) (LB/CA) New gated pedestrian access in existing boundary wall (retrospective) and new stone dwarf wall to planter at The Manor High Street Duddington PE9 3QE 17/02561/FUL (27/01/2018) (Info) Change of use from agricultural to residential to be associated with The Manor, High Street, Duddington of existing yard to include re-surfacing with granite setts and new dwarf wall Yard re-surfacing with granite setts and new dwarf wall at yard adjacent barns north of Home Farm High Street, Duddington</p> <p>Glapthorn 17/02437/OUT (27/01/2018) (Info) Outline: Erection of three new dwellings to form a terrace of 2no 3 bedroom cottages and 1no 2 bedroom cottage (all matters reserved reserved) at land adjacent The Cottage Benefield Road Glapthorn PE8 5BQ</p> <p>Hargrave 17/02405/FUL (27/01/2018) (Info) Erection of single storey tiled roof Oak Glazed Garden Room and connecting corridor along side of house at Xanadu Church Road Hargrave NN9 6BQ</p>	<p>Higham Ferrers 17/02592/FUL (03/02/2018) (LB/CA) Single storey rear extension with glazed lantern. Conversion of garage/store to store/ first floor home office and replace garage door with door and window. Erection of detached oak car port. Changes to fenestration and associated works (retrospective) at 22 College Street Higham Ferrers 17/02593/LBC (03/02/2018) (LBRegs) Ground Floor: Single storey rear extension with glazed lantern; replacement external patio doors to lounge and window to study; and raising of dining room floor. First Floor: Install en suite and vaulted ceiling to Main Bedroom; replacement window to Bedroom 1 and boiler installation, modification of partition and creation of en suite to bedroom 2; modification of partition and balustrade to main staircase. Conversion of garage/store to store/home office including replacing garage door with door and window, replacement of the first floor joists and installation of staircase; create wc; replacement of door with window to first floor. Erection of detached oak car port and associated works at 22 College Street Higham Ferrers NN10 8DZ</p> <p>Islip 17/02094/FUL (27/01/2018) (Info) Extension to form accessible WC access and conversion of bar area to letting bedrooms at The Woolpack Inn 6 Kettering Road Islip NN14 3JU 17/02456/FUL (03/02/2018) (LB/CA) Automatic entrance gates at 3 Chapel Hill Islip Kettering NN14 3JP</p> <p>Kings Cliffe 17/02426/OUT (03/02/2018) (Art8) Outline: Proposed residential development, of up to 20 affordable homes and 10 market homes, allotments and landscaping (all matters reserved except access) at OP0512 TL0097, Blatherwycke Road Kings Cliffe</p> <p>Laxton 17/02482/FUL (03/02/2018) (LB/CA) Detached dwelling utilising existing vehicle access and new vehicle access to existing dwelling at Mandaley Main Street Laxton NN17 3AT</p> <p>Little Addington 17/02551/FUL (27/01/2018) (Info) Proposed orangery to side / rear at The Old Farmhouse Burrows Farm Lane Little Addington NN14 4RD</p> <p>Nassington 17/02484/FUL (03/02/2018) (LB/CA) One and a half storey extension to the side of a</p>	<p>dwelling following demolition of garage and associated alteration works at 24 Woodnewton Road Nassington</p> <p>Newton Bromswold 17/02544/FUL (27/01/2018) (Info) Erection of building for indoor dog training at 66 Rushden Road Newton Bromswold Rushden NN10 0SP</p> <p>Oundle 17/02473/FUL (27/01/2018) (Info) Proposed single storey rear and side extensions at 1 Tilley Hill Close Oundle PE8 4PU 17/02550/FUL (27/01/2018) (Info) Garage conversion with new porch to front and single-storey extension to rear. Accessibility upgrades across the ground floor and replacement of roof covering at 9 Millfields Oundle PE8 4LF</p> <p>Pilton 17/02563/LBC (03/02/2018) (LB/CA) Replacement windows and infestation treatment to timber at The Chestnuts Main Street Pilton PE8 5SN</p> <p>Raunds 17/00266/FUL (03/02/2018) (Art8) Proposed distribution centre (B8 Use Class) together with ancillary offices, parking, servicing and site landscaping at West End land north of Brick Kiln Road Raunds 17/02242/FUL (27/01/2018) (Info) Proposed demolition of existing timber garage and construction of replacement garage. Revisions to previously approved annexe layout. at 2 London Road Raunds NN9 6EJ 17/02583/FUL (27/01/2018) (Info) Part demolition of existing garage and construction of two storey side extension at 2 Belmont, Gardens Raunds NN9 6RN</p> <p>Ringstead 17/02386/FUL (27/01/2018) (Info) A Steel building over the dry dock and work area at Blackthorn Lake Marina Station Road Ringstead</p> <p>Rushden 17/02333/ADV (27/01/2018) (Info) 1no existing totem to be relocated and new installation of 1no pedestrian directional sign at 1 Crown Way Rushden NN10 6AX 17/02382/FUL (27/01/2018) (Info) Change of use from a class C3 dwelling to a large house of multiple occupancy (6-8 occupants). Addition of dormer extension to rear at 54 Station Road Rushden NN10 9SG 17/02487/FUL (27/01/2018) (Info) Overclad existing Duraclad with folded and PPC</p>	<p>aluminium tray panels. Panels are to be powder coated RAL 7006 (matching the existing store front framework) at Unit 8A South Terrace Rushden Lakes Rushden NN10 6FS 17/02492/ADV (27/01/2018) (Info) Revised signage to rear elevation to include the addition of a painted metal pan back panel with illuminated 'Fatface' letters at Unit 1 Southwalk Rushden Lakes Rushden NN10 17/02514/FUL (27/01/2018) (Info) Two storey front and single storey rear extensions at 154 Avenue Road Rushden NN10 0SW 17/02540/FUL (27/01/2018) (Info) Combined front and rear extensions balcony to side elevation at 102 Avenue Road Rushden NN10 0SW 17/02558/FUL (27/01/2018)(Info) Remove the garage door, infill the opening with window and wall. The garage space will then be incorporated into the domestic premises as a habitable room at 14 Yarrow Close Rushden NN10 0XL 17/02559/FUL (03/02/2018) (Art8) Erection of retail and restaurant units together with proposals for access, parking and servicing, hard and soft landscaping and other associated works at land adjacent Skew Bridge Ski Slope, Rushden Lakes, Rushden 17/02596/ADV (27/01/2018) (Info) Replacement internally illuminated 'Pandora' sign to front of building at Unit 4, South Terrace, Rushden Lakes, Rushden NN10 6FS</p> <p>Thrapston 17/02027/FUL and 17/02028/LBC (03/02/2018) (LB/CA)(LBRegs) Alterations to existing building to form two dwellings with new garage at The Corner House 15, Chancery Lane Thrapston NN14 4JL 17/02351/REM (03/02/2018) (Art8) Reserved Matters: Appearance, landscaping layout and scale pursuant to outline planning approval 07/02457/OUT Outline application for residential development (all matters reserved except for means of access) (consisting of a partial re-plan of 16/01690/REM) comprising 105 units at land off Huntingdon and Market Road Thrapston 17/02557/LBC (03/02/2018) (LBRegs) Change two windows facing garden into hardwood patio doors at The Old Rectory 78 High Street, Thrapston NN14 4JH 17/02562/FUL (27/01/2018) (Info) Demolition of existing shop and construction of new shop building and relocation of LPG tank and creation of new parking at A14 Service Station Huntingdon Road Thrapston 17/02574/FUL (27/01/2018) (Info) Re-instatement of car park and new access door into no 23 Cottingham Way at Land Rear Of 22 And 23 Cottingham Way, Thrapston NN14 4PL</p>	<p>17/02576/FUL (27/01/2018) (Info) Two storey side extension for the provision of garage study and domestic annexe at 23 Spinney, Close Thrapston NN14 4LB</p> <p>Titchmarsh 17/02440/FUL (03/02/2018) (LB/CA) Two storey side and first floor rear extensions, replacement of windows at 14 Chapel Street, Titchmarsh NN14 3DA 17/02441/FUL (03/02/2018) (LB/CA) Single storey rear shower room extension at 30 Chapel Street Titchmarsh NN14 3DA 17/02495/FUL (27/01/2018) (Info) Single storey extension at 18 Polopit Titchmarsh NN14 3DL</p> <p>Warmington 17/02219/OUT (27/01/2018) (Info) Outline: Erection of detached chalet bungalow (All matters reserved except access) at 21 Broadgate Way Warmington PE8 6UN</p> <p>Woodford 17/02241/FUL (03/02/2018) (LB/CA) Install automated front driveway gates at Churchfield House Church Street Woodford NN14 4EX 17/02595/FUL (27/01/2018) (Info) Conversion of garages to ancillary annexe accommodation at Woodford Lodge Farm Cranford Road, Woodford NN14 4AP 17/02602/FUL (27/01/2018) (Info) Proposed two storey rear extension at 91 Mill Road Woodford NN14</p> <p>The reason for applications being advertised is as follows: Part3 - Town and Country Planning (General Development Procedure) Order 2015. Part16 - Town and Country Planning (General Development Procedure) Order 2015. Info - Non-statutory - included for information only. LB/CA - Planning (Listed Buildings and Conservation Areas Act 1990. LBRegs - Planning (Listed Buildings and Conservation Areas) Regulations 1990.</p> <p>Paul Bland, Head Of Planning Services Dated 13 January 2018</p>
---	--	--	--	---

Consultation deadlines will differ for each application. Please go to www.east-northamptonshire.gov.uk/planningapplications for details.

From the ENC Chairman

By the time this editorial reaches you Christmas will have passed and I do hope you received all those things you wanted. We are now into 2018 and must consider the New Year a new page in the book of life.

For me, being selected in 2017 to be your Chairman of East Northamptonshire has been an experience and I still have five months left to meet and visit many people and organisations and experience the beauty of where we live. When a New Year starts we

tend to set new goals and fulfil our dreams and desires. I made a list before January 2018 and here is an update on how things are progressing:

- Lose weight – again!!!
- Go to the gym and get fit – date yet to be confirmed, I'll have to give Freedom Leisure a call to

see what offers they have on

- Count my blessings – I'm not good at maths
- Drink at least eight glasses of water a day – I have managed two – wanted to change water to beer (as the Nene Valley is blessed with magnificent breweries) but my wife intervened.

We can all plan what we would like to do, but for all of us, as long as we have our health then we have everything. Whatever you have planned or the intentions you have made to yourself, may you have a great year filled with immense happiness and luck! Stay in good health and achieve greater heights of success. Wishing you a wonderful year ahead!

Cllr Colin Wright
Chairman of East Northamptonshire Council



The Ferrers School named Champion School by NCS

The Ferrers School has been awarded Champion School status by the NCS EM1, the regional provider of the National Citizen Service (NCS), a flagship youth programme for 16 and 17 year olds. The status has been given to those institutions who, like The Ferrers School, have excelled in promoting the programme and recruiting young people to take part over the last academic year.

The award was presented at the NCS EM1 Champion School Awards Ceremony, held at Leicester City Football Club on 6th December. The awards recognise the schools and colleges across Lincolnshire, Leicestershire, Rutland and Northamptonshire, who have excelled in endorsing

and promoting NCS to their students. Sixty-nine other schools and colleges in the EM1 region also received Champion Status at the ceremony.

Angela Smith, The Ferrers School Head Teacher says: "At The Ferrers School, we recognise the markedly positive effect that participation in NCS programmes has had on both our students and the school. We have seen a notable change in pupil wellbeing and engagement with academic work."

"For young people, NCS provides a host of practical and emotional benefits, among them a positive contribution to UCAS personal statements and wider social and personal development. Nationwide nearly three quarters of those who have taken part

in NCS feel more confident about getting a job, and nine in ten feel that it has helped them develop useful skills for the future. They also demonstrate high levels of confidence and resilience, something that we have noted amongst those pupils at The Ferrers School who have graduated from the programme."

NCS is a unique two or three-week full-time programme focused around fun and discovery, plus 30 hours committed to a community project that benefits both young people and society. On this government backed programme, participants build skills for work and life, while taking on new challenges and adventures, making new friends, and contributing to their community.

Wildlife notes

Christmas is behind us now, and so is the shortest day of the winter; "light at the end of the tunnel", maybe, but winter (in a meteorological sense) is by no means over. The weather forecasters class winter as the time from the beginning of December to the end of February, so we, and the animals and birds in our nature reserves and gardens, will be hoping that the sharp (and luckily short) visit of the snow as December came in is not repeated too vigorously.

You will not notice much change in day length yet. Oddly, for a few days after the turning-point both sunrise and sunset times actually move a little later, and mornings will stay dark for a couple of weeks into the new year. Sunset times, though, will become noticeably later, so that as the calendar changes the days will be longer; that is important, because longer days do not necessarily mean higher temperatures. In fact the first two months of the year are historically the coldest period of the year, so food supply remains a serious problem, and longer days give a little more time to be looking

for meals.

Countryside creatures must now fight the weather (which is why some of them choose a winter sleep), but there are already faint signs we and the whole countryside are waiting for. For example, on one sheltered little backwater on the Irthlingborough Lakes reserve a few birds are already thinking about setting up home. A pair of mallard ducks and a couple of coots are regularly in occupation, occasionally joined by a couple of swans. These may well move on before the serious business of family becomes their main thought, but the idea that not everything has completely shut down adds to the hope of later evenings and – even if slowly – warmer temperatures on the way.

A final plea for the last few weeks of winter: we hear and read a lot about saving endangered species, and supplying suitable feed for wildlife is probably most urgent in the next few weeks, so that commoner animals are saved from becoming 'endangered' themselves.

Roy Burrell



What's On
SPRING
2018

CASTLE
THEATRE
Wellingborough

THE CIRCUS OF HORRORS
WEDD
Ages 16+
Thu 25 Jan, 7.30pm
Premium £25 (£21) Standard £22 (£19)

SOMEONE LIKE YOU
THE ADELE SONGBOOK
Sat 27 Jan, 7.30pm
Tickets: £19.50 (£18.50)

Teletubbies LIVE
My first theatre show!
Sat 3 - Sun 4 Feb, 11am & 2pm
£16 (2 for £31, 3 for £45, 4 for £55)

JIMMY OSMOND
AND HIS BAND
AN EVENING WITH
Thu 8 Feb, 7.30pm
Tickets £30 (£27.50)
A TRIBUTE TO **MOON RIVER & ME**

RB Travel
01536 791066

January

Sat 20 Coventry Transport Museum
Wed 24 Seasonal Mystery Tour
Wed 31 Elvis on tour exhibition at 02

February

Mon 5 Leamington Spa & Guide Dogs
Tue 13 Cadbury & Sealife
Wed 14 Man Utd & Trafford Centre
Wed 14 Trafford Centre
Thu 15 London Museums
Tue 20 Melton Mowbray
Wed 21 Seasonal Mystery Tour
Sat 24 Emmerdale Studio Tour
Sat 24 Leeds

March

Thu 1 Lunch & Mamma Mia
Sat 3 Knitting & Stitching Show
Sun 4 Orchids at Kew
Tue 6 Spalding-Market day, Springfields
Wed 7 Seasonal Mystery Tour
Thu 8 Cotswold Tour
Thu 8 Neil Diamond tribute with lunch
Sat 10 National Railway Museum, York
Wed 14 Kia Oval Tour, Afternoon Tea & Beefeater Tour
Fri 16 Jane Austen Museum & Chawton House
Tue 20 Derbyshire & Peak District
Wed 21 St Albans
Fri 23 Ideal Home Show
Tue 27 Saffron Walden
Wed 28 Barnsdale Gardens & Cream Tea
Fri 30 Stratford Upon Avon

Thursford Christmas Spectacular now on sale

NEW day trip brochure out end of January

Call us to book or request a brochure

Check out our website for further days out
www.rbtravel.co.uk

TAURUS
Holidays

February

Mon 19 Bournemouth & New Forest
All Inclusive – 5 days £309

March

Thu 8 Snowdrop Experience, Glasgow
– 5 days £359

Fri 30 Easter in Babbacombe – 4 days £269

April

Mon 23 Dutch Delights – 5 days £479

May

Mon 21 Warner's Littlecote House Hotel
– 5 days £489

Sat 26 Austria & Bavarian Adventure
– 8 days £619

June

Sat 9 Steam & Mooreland, Devon
– 5 days £379

Mon 25 Beautiful Guernsey – 5 days £579

July

Sat 21 Harz Mountains, Piston & Steam
– 8 days £719

Mon 30 Brighton up your week – 5 days £459

August

Sun 19 Summer Mystery – 5 days £335

Mon 20 Warner's Thoresby Hall Hotel
– 5 days £439

September

Thu 13 Cornish Delights, West Looe
– 5 Days £449

* Single-room supplement may apply. Full details in our brochure.

Box Office 01933 270 007

castletheatre.co.uk

FREE PARKING

PAY NO BOOKING FEE

Castle Theatre, Wellingborough

@castle_WEL

CALL NOW ON 01536 791066
TO GET OUR FREE BROCHURE!
taurus@rbtravel.co.uk
www.taurusholidays.co.uk

East Northamptonshire Council helps with Woodford path work

Work to improve access to a popular footpath in Northamptonshire is now complete.

An all-weather, fully accessible route to the East Northamptonshire Greenway (the Greenway) from Woodford is now ready to be enjoyed by all.

The Greenway makes attractive and safer walking and cycling routes available in the heart of the Nene Valley, currently from Rushden to Woodford Lock.

In 2016 East Northamptonshire Council (ENC) awarded Woodford Parish Council (WPC) £21,000 from their Communities Facilities Fund (CFF) to improve the link to the Greenway from the village. The Parish Council also received

funding from Woodford Temperance Charities.

The existing footways did not allow or encourage use by families with pushchairs or disabled users, especially in the winter months.

The improvements, including new kissing gates and stone path, have been made from Church Street to Woodford Mill, giving easy access for all to access Ringstead, Stanwick Lakes and beyond.

Councillors and officers from ENC joined supporters of the project including Peter Bird, Chair of WPC, landowners Stan and Maureen Chalker, and David Stevens who worked closely with the Parish Council as one of the Rights of Way helpers on the Community Plan

group, to officially open the new access.

ENC Chairman, Councillor Colin Wright, who officially opened the upgraded footpath said: "I was delighted to be asked to open the Greenway footpath. This project shows how communities working together can bring rewards and I would like to congratulate all those who worked hard to obtain the funding and those who assisted in bringing it to fruition. A great example of community spirit and togetherness."

Leader of ENC, Councillor Steven North, added: "We set up this fund five years ago using money we receive from central government as new homes are created in the district. It's ploughed straight back into local



communities that want to improve where they live, work and play and projects such as this benefit so many people."

See www.east-northamptonshire.gov.uk/greenway to find out more about the East Northamptonshire Greenway. For more information about the CFF, please visit www.east-northamptonshire.gov.uk/cff

Dedicated Thrapston employee retires after 50 years' service

An employee with a Thrapston company will be shutting his work toolbox for the final time as he retires after nearly 50 years with the company.

Barry Croot has remained loyal to Scotts of Thrapston, a manufacturer of specialist timber products, for nearly five decades after starting as a 16-year-old who was keen to work with a local firm.

The company praised Barry, a Buildings Assembler, for his dedication as fellow workers wished him a fond farewell as he began his retirement.

David Scott, chairman of Scotts of Thrapston, said: "We cannot thank Barry enough for the dedication he has shown as he has devoted his career to our business and he has been a well-respected member of the team."

"Nearly 50 years with one company is an amazing achievement and it is testament to the atmosphere and great working environment we offer here. Barry will be missed by his colleagues and we wish him a very happy retirement."

Barry, who has lived in Thrapston all his life, said he would certainly miss everyone, adding: "Scotts was the first place I applied for a job as it was a local company with a great reputation. I had friends who worked at Scotts too and I wanted to work with them, as any lad would."

Established in 1920, Scotts of Thrapston has a reputation for manufacturing high quality, specialist timber products including summerhouses, stables, pavilions, outbuildings, timber doors, windows, bespoke joinery, roof trusses and education buildings.

Barry added: "My first role was as a labourer helping to move the company from its old factory to a new one. I have mostly

been involved in the Buildings Division over the years, including working on the saw and in the manufacture of dog kennels, rabbit hutches, summerhouses and stables.

"Scotts of Thrapston has been a very good company to work for, and I have never felt the need to move on. I have really enjoyed working here, and my most enjoyable time was developing and manufacturing the variety of summerhouses we have produced over the years – plus the factory is only 10 minutes away from my home."

"I am looking forward to my retirement. I have given myself three months off to take it easy, and will enjoy walking my dog around the local lakes. Then I will work out what I want to do with my retirement, although I do have a lot of decorating to do which will keep me busy for some time."

Scotts of Thrapston employs more than 100 people at its Bridge Street, Thrapston, Northamptonshire headquarters and prides itself on continually looking to recruit bright, young professionals and craftsmen to assist with their continued business growth.



For more information, visit www.scottsofthrapston.co.uk.

No-cook tomato sauce

This versatile, fresh sauce can be stirred through hot pasta, served on griddle bread as a bruschetta or as a topping for fish.

With the excesses and excitement of Christmas now a fading memory, if you're anything like me you crave simple, quick-to-cook, fresh tasting food, that's maybe a little lower in calories, to start the new year off as you mean to go on.

My family love my no-cook fresh tomato sauce. It's almost as easy as it sounds and contains all the goodness of raw extra virgin olive oil, tomatoes, and garlic. It can be stored in the fridge for a couple of days and used in several different ways. My children like it stirred through wholemeal pasta along with cooked sausage slices, or spooned over griddled bread, mozzarella and avocado slices. Halve the olive oil and omit the goats cheese and it's also a great lower calorie sauce, with each serving containing approximately 85 calories (365 calories with an 80g serving of pasta).

To make it mix 1.5 tbsp white wine

vinegar with 4 tbsp extra virgin olive oil, two crushed garlic cloves and a small handful of fresh thyme leaves. Season and set aside to allow the flavours to mingle.

Slit the skin of 6-7 fresh plum tomatoes (approx 500g), place in a heat proof bowl and briefly cover with boiling water.

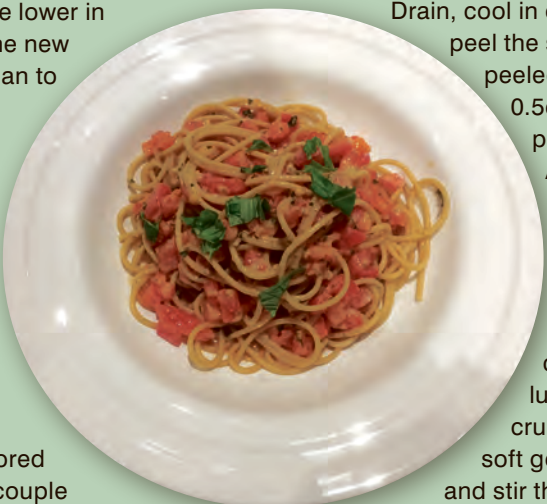
Drain, cool in cold water, then peel the skin off. Dice the peeled tomatoes into

0.5cm pieces and place in a 1L bowl.

Add the vinegar-oil mix and stir well. At this stage you can use the sauce as it is, or for a creamier, more luxurious sauce, crumble 100-150g soft goats cheese over and stir through.

Stir the room temperature sauce through cooked, hot spaghetti. The heat from the pasta will warm the sauce. Serve immediately with a side salad.

By Rachel from CookSmart with Rachel, personalised cookery tuition with a difference in your home or Rachel's. Makes a great gift. Visit www.cooksmartwithrachel.co.uk for more information.





OUNDLE CARPETS & CURTAINS

the elegant way to choose

SALE NOW ON

FANTASTIC REDUCTIONS ACROSS ALL OUR RANGES OF CARPETS, VINYL & WOOD FLOORING

100% Wool Natural Rib One colour only
4 & 5 metre wide Heavy Domestic
Normal Price £19.00 per square metre
SALE PRICE £6.00 per square metre

One Colour ONLY 5 metre wide
Heavy Domestic Wool Twist
Normal Price £22.00 per square metre
SALE PRICE £7.00 per square metre

4 Colours in Heavy Domestic
4 metre wide Polypropylene Twist
Normal price £15.00 per square metre
SALE PRICE £8.00 per square metre

OCW Wool Twist in 4 and 5 metre wide
Heavy Domestic
Normal price £18.00 per square metre
SALE PRICE £14.00 per square metre

Axminster and Wiltons in 90cm,
1.80m 3.65m and 4 metre wide
100% Wool Extra Heavy Domestic
Normal Price from £65.00 per square metre
SALE PRICE £20.00 per square metre

STOCK VINYL 2 and 3 metre wide
All suitable to Heavy domestic areas
Normal price £16.00 per square metre
SALE PRICE £8.00 per square metre

MATTRESSES

In Memory foam Non Turn
90cm, 1.35m & 1.50m wide
SALE PRICES from £79.00

FANTASTIC REDUCTIONS IN ALL OUR RANGES OF CURTAINS, FABRICS, BLINDS AND ALL CURTAIN RAILS

Curtain Fabric from stock
SALE PRICE from just £5.00 per metre

Our Famous Hand Made
Readymade Curtains
In Three Designs in 4 standard sizes
All lined and weighted
Normal Price from £49.00 a pair
SALE PRICE from just £30.00 a pair

Ready Made Curtains lined
Most sizes available including Eyelets
normal prices from £26.00 per pair
SALE PRICE from £19.00 per pair

Quality Roller Blinds from stock
ALL Colours and sizes
Normal Price from £19.00
SALE PRICE from £15.00

Swish the curtain rail of quality
All sizes from stock
Normal Price from £16.00 for a
125cm width
SALE PRICE £12.00 for 125cm width

Cushions in a host of sizes
all ready to take away
SALE PRICE from just £10.00 each

We also have Poles, Venetian and vertical blinds in beautiful designs along with solid wood. And don't forget our handmade, hand sewn service.

01832 275009 (carpets) / 01832 273078 (curtains)

Units 4/8 Eastwood Road, Oundle, Peterborough, PE8 4DF

www.oundlecarpetsandcurtains.co.uk

Open: Mon to Fri 9am – 5pm, Sat 9am – 4pm

Step right up!

East Northamptonshire Council (ENC) and Freedom Leisure (FL) are looking for volunteers to help launch a walking scheme in the district.

Getting active can be difficult, but ENC and FL are here to help. They want to set up a Walking For Health Scheme across East Northamptonshire and are looking for volunteers to help achieve this.

Walking is truly accessible – almost everyone can do it anywhere and at any time. It won't cost you anything and you don't need any fancy equipment to hit the pavement. Walking can have so many positive effects on

your health including helping your heart and lungs to work better, lowering your blood pressure, keeping your weight down, lightening your mood and keeping your joints, muscles and bones strong!

Joe Bailey, Healthy and Active Lifestyles Officer at ENC says: "Our aspiration for East Northamptonshire is to see more residents, being more active, more often through increased participation in sport, physical

activity and active recreation.

"Walking is the most likely way all adults can achieve the recommended levels of physical activity and it's often described as the nearest activity to perfect exercise so that's why we want to set up the scheme. This will allow residents to get outdoors and explore the wonderful district we have, being more active and meeting new people in a fun and social way.

"We need people to lead or assist with walks, develop new routes and provide general support. Full training is provided along with our continued support. So if you would like to join the team and make a difference to your local community, I'd love to hear from you."

For further details on the East Northamptonshire Active Communities Walking For Health Scheme, please contact Joe Bailey on jebailey@east-northamptonshire.gov.uk or 01832 742195.

Men wanted to help raise money for Prostate Cancer UK

Northampton Male Voice Choir (NMVC) is challenging the men of Northamptonshire to join them and the wonderful soprano Emily Haig in a concert on 14th April 2018 to raise money for Prostate Cancer UK.

Two open evenings will be held at the Northampton Saints Rugby Ground, Franklins Gardens on 1st

and 8th February. You'll be invited to learn to sing two songs over an eight-week period with training by Musical Director, Stephen

Bell. At the end of the programme you'll be ready to perform the songs at NMVC's concert in aid of Prostate Cancer UK.

So, if you think you might be interested, why not go along to one of the open evenings and enjoy a free beer while you find out more about this fantastic opportunity and meet the NMVC team (why not bring a friend?). To secure your place at the open evening of your choice just get in touch with the Chairman, John Waller on 07989 387752 or jwaller7@btinternet.com

Fineshade Wood needs you!

Would you like to try something new this year, and at the same time give back to the community? The Forestry Commission is currently recruiting volunteers to work at Fineshade Wood, in the north of the county (postcode NN17

3BB). The two main roles are Welcome volunteers and Woodland Management volunteers, and if either of these interest you, there will be a coffee morning on Saturday 20th January, when you can find out more.

Drop in any time between 10am and 1pm, have coffee and cake and chat about the opportunities. Current volunteers will also be on hand to tell you what it is like to work in this lovely ancient woodland setting. If you can't make that date, please email volunteering.fineshade@forestry.gsi.gov.uk to find out more.

FAMILY LAW ADVICE

We'll help you make the right choices.

- Free initial phone call
- £60 fixed fee, face-to-face consultation
- Divorce and relationship breakdown
- Marriage and relationship planning
- Finances on separation
- Children
- Domestic violence
- Mediation

**NORTHAMPTONSHIRE
LAW SOCIETY
LARGE LAW FIRM
OF THE YEAR
2017**

**THE LEGAL
500
2017**

**Highly rated by
the Legal 500,
a Who's Who
of the legal world.**



01933 697511
enquiries@wilsonbrowne.co.uk
wilsonbrowne.co.uk

wilson browne SOLICITORS
All the help you need

SPORTS AND LEISURE ASSISTANT

Required as soon as possible

**Up to 25 hours per week – casual contract in the first instance
Grade D points 10 - 12 (£8.09 - £8.36 per hour)**

We are seeking to appoint a Sports and Leisure Assistant who will represent the school during community lettings periods. The successful candidate will be reliable and be expected to display a high level of responsibility, organisational and communication skills.

The role will involve working evenings, weekends and school-holiday periods so a flexible approach to working hours is essential. The number of working hours may increase or decrease depending on the number of lettings taking place at the school during community periods.

TEACHING ASSISTANT

Required as soon as possible

18.75 hours per week

**39 weeks per year (school terms plus five training days)
Grade D points 10 - 12 (actual salary £6,767.00)**

Candidates must have the ability to work well within a team, have good interpersonal skills and be able to communicate effectively with staff and students. You will provide support to students with additional needs including learning, behavioural, emotional, social and physical difficulties.

Successful candidates will be expected to work with students having barriers to learning, both in the classroom and in a small group withdrawal situation.

GCSE Grade C or above in English and Maths or Level 2 equivalent qualifications are required.

**Closing date: 9.00am Thursday 18th January 2018
Interview date: Week commencing 22nd January 2018**



**Application form and job description
are available on our website:
www.theferrers.org**

We are committed to safeguarding and promoting the welfare of young people and expect all staff share this commitment. All posts will subject to an enhanced DBS disclosure, medical and reference checks.

Monday 15th January

Nene Valley Astronomical Society Talk – John McEvoy: ‘Out of Chaos Comes Order’.

Chelveston Village Hall, Caldecott Road Chelveston NN9 6AT
8pm, visitors and members welcome £3 per person including tea/coffee and biscuits.
Steve Williams 01933 650331 or email: chilternastro@yahoo.co.uk or Kevin Burton on 01536790787 or kevinburton07@aol.com
John’s talk covers our outer planets – the gas and ice giants their moons.

Wednesday 17th January

dOCs+ : Mountain (PG)
Fletton House, Fletton Way, Glapthorn Road, Oundle PE8 4JA
7.30pm, £8/or £30 for all 5 dOCs+ films
Oundle Festival, 4 West Street, Oundle PE8 4ED.
Tel: 01832 274734
www.oundlefestival.org.uk, information@oundlefestival.org.uk
“...a safari into the sublime, a vertiginous voyage to the top of the world providing astonishing vision of mountaineers, ice climbers...one of the most visceral movies ever made.”

Thursday 18th January

Bob Ruckwood – Drawing Skills

Tansor Village Hall
1.45pm-3.45pm, £4 members, £6 non-members
01832 226495
Bring range of pencils and paper.

Talk: Climate Change – What can be done to reduce carbon emissions and who should we motivate to do it?

The Great Hall, Oundle PE8 4GH
7.45pm
Tickets £8 (£6), £1 off early bird tickets bought before 11th Jan, available from the Oundle Box Office, contact Helen at oundlelifestival@hotmail.co.uk.
Preventing extreme climate change is one of the hardest tasks humans have ever faced, come along and hear some up-to-date information.

RSPB Mid-Nene Local Group Indoor Meeting

Saxon Hall, Raunds
7.30pm, admission £3 including tea or coffee, children free.
Penny 01933 350404
There will be a illustrated talk on ‘I Know an Island’ by Trevor Gunton.

Friday 19th January

Thrapston and District U3A Monthly Meeting

Plaza, Cosy Nook
10am-12 noon
Visitors £2 including refreshments.
www.thrapston.u3a.co.uk or
Tel: 01832 735797
This month our speaker is Philip Saxby – ‘Cider Making’.

Rushden & District History Society

South End Junior School, Wymington Road, Rushden NN10 9JU
7.30pm, admission: members £1.50, non-members £2.50
Tel: 01933 358218
Daniel Williams: ‘Victorian Institutions – Workhouses’.

Saturday 20th January

The Swivel Club Charity presents ABBA Revival with supporting Disco
Rushden Town Bowls Club, Northampton Road NN10 6AT
Doors 7pm, tickets £20 available from The Bowls Club, Rushden Graphics Alfred Street or from hotline 07738080470. Our ABBA tribute acts are always very popular so early booking recommended.

Sunday 21st January

Higham Ferrers Footpath Group
Saffron Road car park Higham Ferrers for car sharing
9am

01933 663603
6 mile walk from Milton Keynes, no stiles.

Whitefriars Church –

Morning Worship

Whitefriars Church at Whitefriars Primary School, Boughton Drive, Rushden NN10 9HX
10.15am
Chris Youngman 01933 551769
An informal church service open to all.

Rushden & Higham Ferrers Churches Together in Prayer and Praise

Highfield Community Baptist Church, Highfield Road, Rushden
7.30pm
Andrew Presland 01933 316927
An informal time of prayer and praise.

Thursday 25th January

Painting a party

Tansor Village Hall
1.45pm-3.45pm, £1.50 members £2.50 non-members
01832 226495
Bring any media and paper.

Archaeological Finds Evening

Sports Pavilion, Vine Hill Drive, Higham Ferrers NN10 8EF
7.30pm, HiFARS members FREE, visitors £1
Olwen Mayes 07904 014750
Bring your finds and objects of interest along for our archaeologist to identify.

Sunday 28th January

Oundle Cinema: Dunkirk (12A)

Stahl Theatre, West Street Oundle Peterborough PE8 4EJ
7.30pm, admission: £6/£3 under 18s
Oundle Festival, 4 West Street, Oundle, PE8 4EA.
Tel: 01832 274734
www.oundlefestival.org.uk, information@oundlefestival.org.uk
“It’s an utterly immersive experience that fulfils Nolan’s promise of creating “virtual reality without the goggles”...see it you must.”

Whitefriars Church – Morning Worship with Holy Communion

Whitefriars Church at Whitefriars Primary School, Boughton Drive, Rushden NN10 9HX
10.15am
Chris Youngman 01933 551769
An informal church service open to all.

By Appointment

Counselling & Listening Service

No 1 St Osyth’s Lane, Oundle, Northants PE8 4BG
These services are free
Marilyn 07936 015965

Housing, benefits and employment advice

No 1 St Osyth’s Lane, Oundle, Northants PE8 4BG
01832 770010/
office@oundlebaptist.org.uk

Half-Term

All-age Touch Typing Club

Mon-Fri, 9.30am-10.30am, learn or refresh your skills, £15 course intro with coffee.
Diane Gifford 07432 123438

Every Monday

Baggypants Yoga Class

Masonic Hall, Wellingborough Road, Rushden
8.30am-9.30am, £5 per class
07873 743256/
carole.wyatt@virginmedia.com

Islip Ladies Choir

Thrapston Church Hall
2pm-3.30pm
Barbara 01536 394431

Yoga Classes

Denford Village Hall
9am-10am, £4 per session
Anita Hackney 01832 733274

Titchmarsh Folk Dance Club

The Club Room, High Street, Titchmarsh NN14 3DF
8pm-10pm, £1 inc tea/coffee
Kev Prigmore 01536 514023/
titchmarshfdc@gmail.com

Oundle Ladies Running Group

Oundle pool car park
6.45pm
Jane Walker 01832 272898/
janewalkercakes@icloud.com

Baggypants Yoga

Masonic Hall, Wellingborough Road, Rushden
10am-11am, £5 per session
01933 382837/07873 743256/
carole.wyatt@virginmedia.com

Spanish Tuition

The Old Town Hall, Market Place, Oundle
9am-8pm, £25 per class
01832 776336/
info@antlerlanguages.co.uk

Every Monday (term time) Praise and Play

St James’ Church Thrapston
1.30-2.45pm, refreshments available
Anita 735443

Aqua Aerobic Classes

Oundle School Swimming Pool, Milton Road, Oundle
8.45-9.30am, £25 for 5 sessions
01832 277208/277195

Every Monday, Friday & Saturday (term time)

Otters Swim School Lessons

Oundle School Swimming Pool, Milton Road, Oundle
Mon 3.55-6.10pm, Fri 3.55-6.10pm,
Sat 8.30am-12noon, block booked in advance (£5.50 per lesson)
01832 277208/277195

1st Monday of the month Oundle Wives

Methodist Church, Oundle
7.45pm, £3 refreshments/raffle
01832 272178

Oundle & District Royal British Legion Meeting

The Talbot Hotel, Oundle
7pm
Les Starks 01832 270073

Finedon Irthlingborough & District Branch Royal British Legion Branch Meeting

Finedon Bowls Club
7.30pm
Peter Eames 07434 328237

Every 2nd Monday (except Jan & Aug)

Thrapston & District Royal British Legion Branch Meeting

The Thrapston Centre, High Street, Thrapston
7.30pm
Veronica McCurdy 01832 735206

2nd Monday of the month Royal British Legion Rushden Branch Monthly Meeting

Rushden Football & Social Club, Hayden Road, Rushden
7.15pm, annual fee £17
Jake Baker 07525 441267

3rd Monday of the month (except Dec)

Oundle Munch Club

Oundle Primary School
Come for a roast lunch and pudding
£4, book your place on 01832 275353

2nd & 4th Monday of the month StitChat

No 1 St Osyth’s Lane, Oundle
1.30pm-3.30pm
01832 770010/
office@oundlebaptist.org.uk

Monday once a month Woodturning Club

Hardwick Village,

nr Wellingborough NN9 5AL
7pm-10pm
Paul Lawman 01933 674260

Every Monday & Thursday

Oundle Bridge Club

Fletton House, Fletton Way, Oundle PE8 4JA
7pm start
01832 273044

Every Tuesday

Pensioners Club – Men Only

Rushden Hall
2pm-4pm
Secretary – David Robinson
01933 313729 or 07391 562772
New members needed. Speakers, bingo and whist, annual Christmas dinner. Also coach outings.

Slimming World Group

Oundle CE Primary School, Cotterstock Road PE8 5HA
5.30pm and 7.30pm, £4.95 plus membership fee. Come along and start your Slimming World journey and be greeted with the warmest welcome and a room full of friends.

Short Mat Bowls

Islip Village Hall
10am-12noon, £3
Barbara Finch 01832 733154

Phoenix Gaming Club (Age 12+)

The Rushden Scouts Hall, Brooke Close behind Orbit Tyres (Skinners Lane, Rushden NN10 OXH)
7pm-11pm, membership £5 pa
Aron 07739 563657/
aron.phoenix@virginmedia.com

Art Classes (10 weeks)

Kruston Hall, Kruston
7pm-9pm, 10 Lessons £100
Jamie 07899 676769

East Northants Classic

Motorcycle Club

New Inn Public House, Wymington
Meet around 7.30pm

Sling Walk

11am, first Tuesday of the month there is Sling Library at 10am prior to the walk. Second Tuesday meet at Rushden CC Hayway instead of Higham Ferrers. 01933 410112

Rushden Mission Training Band

Mission Church, Wellingborough Road, Rushden
7.30pm-8.45pm
Alan Richardson 01933 355302

Short Mat Bowls

Saxon Hall, Raunds
1.45pm-4pm, £3
01933 624545

Yoga Class

Whitefriars Infant School, Boughton Drive, Rushden
7.15pm-8.15pm, £5 per session
Carole 07873 743256/
carole.wyatt@virginmedia.com

Ringstead’s Jolly Good Company

Ringstead Shared Church
10am-11am, £4
Music & Movement for over-55s.

Every Tuesday (term time)

Toddlers’ Drop In

No 1 St Osyth’s Lane, Oundle
9.15am-11.30am, free
01832 770010/
office@oundlebaptist.org.uk

1st Tuesday of every month

Great Companions (singles 55+)

Rushden Bowls Club, Northampton Road
7-9pm, yearly membership £6
Pat Bazeley 07931 964360

2nd Tuesday of the month

Woodford WI Meeting

Woodford Sports and Social Club
7.30pm
Lynn Sortwell 01832 732740

Tea Dance

Pemberton Centre, Rushden



Dancing to ‘Music Box’, 2pm-4pm, £3 including tea/coffee & cake

Higham Ferrers Guided Tour

Groups of 6 minimum. Trained guides. Tea & cakes, optional.
01933 411191

50+ Adventure Club

For further information
01536 505548/www.fiftyplusnorthantsadventureclub.org.uk

Every Tuesday & Thursday

Health Walks Stanwick Lakes

10am-11am, free, car park charges
01933 625522/
www.stanwicklakes.org.uk

Ladies Crochet Group

Irthlingborough
2pm-4pm, £10 per session
Contact Ros 07722593637

Every Tuesday, Thursday & Friday Partner Whist Drive

Rowlett Close, Higham Ferrers (Tuesday & Friday)
Windmill Club, Rushden (Thursday)
7.30pm, £2
01933 313714.

Every Tuesday & Saturday Coffee Mornings

St James Church, Thrapston
10am-12noon
01832 730019

Every Wednesday

Wednesday Morning Yoga Class

Masonic Hall, Rushden
10am-11am, £5 per class
Carole 07873743256
carole.wyatt@virginmedia.com

Yoga classes

Masonic Hall, Rushden
1pm-2.30pm
www.awakenwithyoga.co.uk
Daisy 01536 724113

Ladies Archery Pemberton Maid Marions

The Pemberton Centre, H E Bates Way NN10 9YP
Diane 01933 314032 or
Nicki 01933 395913

Tai Chi

Chelveston Village Hall
2pm-3pm, £5

Dog Training, Socialisation and Ringcraft

Halefield, Woodnewton, nr Oundle
Classes from 6.45pm
01832 293432/oundledogs@aol.com/www.oundledogs.co.uk

Rainbow Cafe for Tots

Stanwick Lakes
10.30am-12noon and 1.30pm (term time only), £2.50 per child – car park charges apply.
01933 625522/
www.stanwicklakes.org.uk

Club Night

Apethorpe Tennis Club
From 6pm

Returners to Work

No.1 St. Osyth’s Lane
10am-12noon
01832 770011

Art & Craft Class

Oundle Rural Mind, 1 Herne Park, East Road, Oundle PE8 4BZ
Irene Issitt 01832 275020

Inflatable Fun Session

Oundle School Swimming Pool, Milton Road Oundle
5pm-6pm (May vary during school holidays), £3 adult & £2.25 child
01832 277208/277195

Cambridge First

Certificate in English

The Old Town Hall, Market Place, Oundle
9.30am-12.30pm, £25 per week
01832 776336/
info@antlerlanguages.co.uk

French Tuition

The Old Town Hall, SFrom 6pm, £25 per week
01832 776336/
info@antlerlanguages.co.uk

Jelly Babes Toddler Group

Rushden Independent Wesleyan Church
9.15am

Every Wednesday (term time) Community ICT Classes

Needham Building, Oundle School SciTec, Glapthorn Road, Oundle
2.30pm-4pm
01832 277267 to enrol

Tiny Tots

Oundle C of E Primary School, Glapthorn Road
1.45pm

660 Club (Age 60+)

Two Acre Club, off Milton Road
2.15pm-3.45pm
Afternoon tea and entertainment hosted by Oundle pupils.

Allegra Singers –

Three-part ladies choir

Music room, Sports Pavilion, Islip
7.30-9.30pm, £3 per session
Veronica 01832 732611/
07753 472225

Every alternate Wednesday

Psychic & Spiritual Awareness

Development Group

Rushden
1pm-3pm or 7.30pm-9.30pm, £7 per session
Renalta Hall 07712 740495

1st Wednesday of the month

Raunds Ladies Group

The Saxon Hall, Raunds
8pm-10pm, Visitors £3.50

Weekly Wildlife Wanders

Meet at Nene Wetlands Visitor Centre
10.30am, £3 per person
katie.king@wildlifebcn.org,
01933 779587. Informal 90-minute

guided walk. (Call Visitor Centre to confirm walk is taking place.)

**1st & 3rd Wednesday of the month
Thrapston Country Dancers**
St Johns Ambulance Hall
2pm-3.30pm
G Hearnden 01933 622827/
ghearnden@tiscali.co.uk

**2nd Wednesday of the month
Coffee Morning**
Raunds Methodist Church
10am-12noon
01933 383378

**2nd & 4th Wednesday of the month
Northants Model Makers**
Windmill Primary School,
Raunds NN9 6LA
Main meeting starts 7.30ish
First couple of meetings free
Bob Humpage 07960 054405/
modelmaker@tiscali.co.uk

**3rd Wednesday of the month
Wellingborough Flower
Arrangement Society**
St Mary's Church Hall, Knox Road,
Wellingborough NN8 1HU
7.30pm, £5
Chairman 01933 222326/
Secretary 01604 870275

Higham and Rushden U3A
Pemberton Centre, Rushden
2pm, visitors always welcome to
attend (£3 charge)
www.highamandrushdenu3a.org.uk

British Korean Veterans
The Old Grammarians Club
Oxford Street, Wellingborough
11.45am
Mary Morby 01933 312476 or
e.m.m@btinternet.com

Raunds & Dist' British Legion
Conservative Club, Raunds
8pm
01933 625333 for more details
You do NOT have to be ex-services.

**4th Wednesday of the month
Rushden Pensioners Forum**
St Peters Church Hall,
Midland Road, Rushden
2pm-4pm
Mary Morby 01933 312476/
e.m.m@btinternet.com

**Wednesday & Thursday
Free Counselling**
No.1 St. Osyth's Lane Oundle
By appointment 0793 6015965

**Wednesday & Saturday
East Northants Athletics Club –
'Getting Kids Into Athletics'**
The Ferrers School, Higham Ferrers
Wed 6-7pm, Sat 9-10am,
£4 per session or Wed & Sat £7
Graham Bufton 07788 698883/
grahambufton.ena@gmail.com

**Wednesday & Sunday
Ferrers & Rushden Tennis Club**
Higham Ferrers Recreation
Ground, off Wharf Road
10am-12noon (Sun); 6.30pm-8.30pm
(Wed). Per club session £2 adults/
£1 junior (youngest aged 10)
Steve Roberts 01933 461028/07960
846092

**Every Thursday
Drop-in Service**
Rushden Council Office,
Newton Road NN10 0PT
1pm-4pm
Amanda 07977 224574
We offer advice and support to
people affected by domestic abuse.

Tai Chi for beginners & improvers
All Saints Church Hall,
Midland Road, Wellingborough
10am-11am, £6
dominicrushmore@live.co.uk
Improve your strength and balance
with these gentle and relaxing
exercise. Suitable for all.

Rushden Folk Dance Club
St Mary's Church Hall, Rushden
8-10pm, first visit free, £2 thereafter
Val 01933 387327

The Silver Fox Woodturning Club
Dale End Scout Headquarters,
Croyland Road, Wellingborough
10am-1pm, £2 all members
Debbie 01604 751019.

Move to Health
No 1 St Osyth's Lane, Oundle
2.15pm-3pm
01832 770010/
office@oundlebaptist.org.uk

Thursday Drop-In
No 1 St Osyth's Lane, Oundle
10am-2pm
01832 770010/
office@oundlebaptist.org.uk

**Little Ducklings Pre-School
Stay & Play 'Tea & Tots' Sessions**
1.30pm-3pm, £1.50 per family.
01832 358085

Short Mat Bowls
Wymington Memorial Hall
1.45pm-4pm, £2 admission
Mrs Smith 01933 355960

Olde and Sequence Dancing
Woodford Sports and Social Club
7.30pm-9.30pm, £2
Dorothy 01832 732534 or
Keith 01832 731896

**Every Thursday (term time)
Music Makers**
Titchmarsh Pavilion
9.30am-10.15am, Joan Strong
Centre, Oundle 11.15am-12noon,
Stanwick Village Hall, 2pm-2.45pm,
£4 per child, £2 for siblings

Naomi Cooper on
musicmakersnorthants@gmail.com

Little Treasures Tots Group
St Laurence's Church, Stanwick
9.30am-11am, donations to cover
costs, Nicki 01933 625658

Community Art Classes
Oundle School Art Department
7.30pm-8.30pm, free classes for
people with a disability.

**Coffee/tea and biscuits
in the Bede House**
St Mary's Church, Higham Ferrers
10am-12noon, no charge just a
donation to cover costs.

Adult & Child Swim Sessions
Oundle School Swimming Pool,
Milton Road Oundle
9.15-9.45am, booked in advance
as a block (£4.75 per lesson)
01832 277208/277195

**3rd Thursday of the month
Painting Class with Nick Baldwin**
Chelveston Village Hall,
10am-4pm, £17 per session
Janet Lowe 01933 389647.

Ise & Nene Valley Turners
Cranford Village Hall, Grafton Road,
Cranford NN14 4JE
7pm, members free, visitors £5
Peter Bond 01933 741835/
peterjbond@btinternet.com

**Thursday Market Day
No.1 Cafe - Free Drop-In**
No.1 St, Osyth's Lane
10am-2pm, 01832 770011

**Every Friday
Over 60s Club Bingo**
Working Men's Club, Higham Ferrers
2-4pm
01933 741286
Come and Enjoy a game of Bingo.

Walk and Chat
Rushden Hall Park, under flagpole
10am
Sue McKay 07739 327022/
sue.mckay@groundwork.org.uk

Music Makers
Nene Centre, Thrapston
12.45-1.30pm & 1.45-2.30pm,
£4 per child, £2 for siblings
Naomi Cooper 07815 293893/
musicmakersnorthants@gmail.com

French Beginners
The Old Town Hall,
Market Place, Oundle
6pm-7.30pm, £25 per class
01832 776336/
info@antlerlanguages.co.uk

**Local Focus 'Explore by bus'
Group (January 2018)**
Link up from a local library.



10am-1pm/3pm, also group
bookings, from £10 per month
including unique booklets
01933 461480,
susanthewalker@hotmail.com
Friendly group for all ages & abilities,
discover more via bus/walking.

**Every Friday (term time)
Over 60s FREE swim**
Oundle School Swimming Pool,
Milton Road, Oundle
3pm-3.45pm
01832 277208/277195

Pre-School Swimming Lessons
Oundle School Swimming Pool,
Milton Road, Oundle
1.55-2.25pm & 2.30-3pm, block book
in advance (£6.75 per lesson)
01832 277208/277195

**Friday Once a Month
Wildlife Trust Little Bugs Club**
Nene Wetlands Visitor Centre,
Rushden Lakes
10-11.30am, £3 per child (intro rate)
Booking essential, 01933 779587
viktorija.marta@wildlifebcn.org

**1st Friday of the month
(Check before travelling)
Craft Cafe**
Stanwick Lakes
10.30am-1pm, modest charge for
some materials – car park charges
01933 625522/
www.stanwicklakes.org.uk

Oundle Evergreen Club
2.30pm in the Victoria Hall for tea
and cakes plus entertainment.
01832 273826/272340

**3rd Friday of the month
Raunds Tea Dance**
Saxon Hall, Raunds
2pm-4.15pm, £3 (50p for raffle)
Mrs Wicks 01933 312623

U3A Meeting
The Plaza, Cosy Nook,
Thrapston NN14 4PS
10am-12noon, £2 (visitors), free for
members, includes refreshments.
Guest Speakers each month.

Former Carers Group
No 1 St Osyth's Lane,
Oundle PE8 4BG
2pm-3.30pm, free
01832 770010/
office@oundlebaptist.org.uk

**3rd Friday of the month
(Check before travelling)
Stanwick Stitchers**
Stanwick Lakes
10.30am, free, car park charges.
01933 625522 or Pauline
on 01933 229817/
www.stanwicklakes.org.uk

**Last Saturday of the Month
(except Dec)
Farmers' Market**
Market Square, Higham Ferrers

9am-1pm
Danielle@highamferrers-tc.gov.uk

**1st Saturday of the month
Coffee Morning**
St Mary's Church, Ringstead
10am-12noon, 01933 624262

Thrapston Farmers' Market
Thrapston High Street
9am-1pm
www.thrapstonfarmersmarket.
moonfruit.com

**2nd Saturday of the month
Coffee 'n' Cakes**
Oundle Methodist Church,
Drummingwell Lane
(behind the Talbot Hotel)
10am-12noon
John Hewitson 01832 272209

WE Watch
Stanwick Lakes
01933 625522/
wewatchstanwick@hotmail.co.uk

Oundle Farmers' Market
Market Place, Oundle
8am-1.30pm
Oundle Town Council 01832 272055

**3rd Saturday of the month
Phoenix Group**
Stanwick Lakes
01933 625522/
wewatchstanwick@hotmail.co.uk

Messy Church
Rushden Salvation Army,
Church Street, Rushden
4pm
George Ellitson 01933 313106

**Every Saturday & Sunday
Coffee & cakes/Sunday worship**
Rushden Independent Wesleyan
Church (Entrance Queen Street)
Saturday coffee & cakes.
10am-11.30am, Sunday worship
10.45am with children's activities
2nd Sunday in the month 4pm.

**Every Sunday
Short & Sweet**
St Mary's Church Rushden
2-3pm
Sue Merrifield 01933 358218
Short worship for people with
additional needs followed by tea,
cake and crafts.

2 Course Sunday Lunch
Rushden Bowls Club
12noon, £10 per head
07850864537 to book.

Sunday Tea
Fotheringhay Village Hall
3pm-5.30pm, £2.50 for tea & cake
Alexandra Mitchell 01832 226440.

Morning Worship
Rushden Mission Church,
Wellingborough Road
10.45am
Alan 01933 355302

Morning Church Service
Rushden Heritage Chapel Hall,
Park Road, Rushden NN10 0RG
10.30am

Church Service
The Heritage Chapel and Halls,
Park Road, Rushden NN10 0RW
10.30am
Cheryl 07969 603958/
cheze49@gmail.com

Ringstead Shared Church
Service for all (Communion first
Sunday each month), 10.30am
Mike Freeman 01933 389796/
rbc-rsc@angeladavis.net

**1st Sunday of the month
Priceless – for young children
and their families**
St Laurence's Church, Stanwick
9.30am-10.15am

**Every 2nd, 4th & 5th Sunday
Pete's Pack (For children 3+)**
St Peter's Church,
Newton Bromswold
Bible based activities, 10am-11am
Helen Lines 07917 001924

**3rd Sunday of the month
All Age Worship**
St Laurence's Church, Stanwick
9.30am

Leisurely, Sociable Strolls
Pub start – if not lunching do not use
pub car park. 10am for 10.30am
start. Guests £2 or join for year £8.
secretary@northamptonshire
shamblers.org.uk

**4th Sunday of the month and
Bank Holidays (except Nov-Jan)
King's Cliffe Heritage Centre**
Bridge Street. (Hanging sign when
we're open). Open 2pm-5pm

**Ongoing
Drawing & Painting Classes**
Ecton Village Hall, Chelveston Village
Hall, Warkton Village Hall &
Kingsthorpe Community Centre
£65 per term
Derek Geater 01933 381848/
dgartweb.sharepoint.com

German Tutorials
Oundle area
Gudrun 07710 189906/
gudvolk@gmail.com

To submit your
event please contact
us via our website in the
following format: Date, event,
place, time, admission
fee (if applicable), contact
information, 15 word
description.



Oundle Cinema 2018

A programme packed with extraordinary films and thought provoking documentaries.

Incredible true stories, entertaining animations, fascinating documentaries and a film version of Mozart's best loved opera are amongst the fantastic films which fill Oundle Cinema's 2018 season.



Local organisations – Willowbrook Kitchens, The Oundle Carriage Company, The Fox Directories, Transition Oundle, Big Bear Outdoors, Welland Flooring and Oundle School's Music Department as well as Oundle Town Council have all lent their support to the programme, demonstrating how much Oundle Cinema is appreciated by those that live and work in the area.

On Sunday 28th January there will be a screening of Dunkirk – Christopher Nolan's epic retelling of the evacuation of British troops from the beaches of war-torn France, starring Mark Rylance, Tom Hardy, Cillian Murphy, Kenneth Branagh and Harry Styles (yes! really!). This will be followed, on Sunday 18th February, by The Party, a hilarious black and white comic satire packed with stars including Timothy Spall, Kristin Scott Thomas and Emily Mortimer – a film which will make its audience laugh and cry. What starts as a celebratory evening descends into chaos, deviating via a shocking announcement en route.

The award winning (and Oscar nominated), heart-warming, curiously named animation My Life As A

Courgette rounds off the February screenings on Sunday 25th. It is a gorgeous tale of gentleness and tenderness about an orphan who relearns how to love and trust amongst peers in his new home.

Other forthcoming films include Victoria and Abdul, Goodbye Christopher Robin, Breathe and Paddington 2. These films will all be shown at the Stahl Theatre, West Street, Oundle PE8 4EJ and, with the exception of My Life As A Courgette and Paddington 2, start at 7.30pm.

The documentary programme, dOCs+, has some incredible films lined up too – these are special interest features, which rarely come to mainstream cinemas. The 2018 season includes, on Wednesday 17th January, Mountain. Described as 'One of the most visceral film essays ever made', it is a sublime journey around the rooftops of the world, showing some of the white-knuckle activities

which people undertake on these gentle giants. On Wednesday 21st February, A Syrian Love Story tells the story of two Syrians and how their protest against the country's repressive regime has affected every aspect of their lives. Other forthcoming documentaries include RiverBlue – about the impact of the manufacture of denim on many of the world's waterways; Cameraperson – detailing the fascinating work of a film journalist; and Our Last Tango – a portrait of this most seductive of dances through the eyes of two of its greatest protagonists.

All dOCs+ screenings are at Fletton House, Glapthorn Road, Oundle PE8 4JA at 7.30pm.

2018 Village Cinema programmes are in the process of being finalised. Keep an eye on the website for up to date details.

Ticket prices are spectacularly low, ensuring that Oundle Cinema provides excellent entertainment which is affordable for everyone.

Trailers and further information can be found on the website www.oundlecinema.org.uk where tickets can be purchased too. Alternatively, drop into the Oundle Box Office, 4 New Street or call 01832 274734.

Email information@oundlefestival.org.uk to receive email updates about forthcoming films, and follow on facebook. com/oundlecinema and @Oundlecinema.

"...probably the most interesting and rewarding volunteering role you could imagine"

People like you are volunteering at their local Citizens Advice

citizens advice Central & East Northamptonshire

Volunteer Hotline
0300 323 9941

Nene Valley news Classifieds

Deadlines for all classifications: 5pm Monday prior to issue date. A complete version of our Terms and Conditions can be found online at www.nenevalleynews.co.uk. Pay by credit/debit card or cheque. All major credit/debit cards accepted. For help and information please call **01522 513515** or visit www.nenevalleynews.co.uk



ACCOUNTANCY

Jon Essam & Co Ltd

Chartered Accountants

- Self Assessment Tax Returns
- Limited Company services
- VAT & CIS Returns
- New Business Start Ups and advice
- Payroll & Auto-enrolment services
- Sage & Xero specialists
- Free initial consultation

Tel: 01832 730280 Fax: 01832 730281
info@essamca.co.uk www.essamca.co.uk

23 Cottingham Way, Thrapston, Kettering, Northants, NN14 4PL



FAYREHAVEN ACCOUNTANCY SERVICES CHARTERED CERTIFIED ACCOUNTANTS

4c Stanwick Rd, Higham Ferrers, NN10 8JG
Tel: 01933 312080 / Mobile: 07905730623

E-Mail: neil.perera@accamail.com / neil.perera777@gmail.com

Book Keeping & Accounts Preparation
Self Assessment & CT returns

Please call me to discuss your business needs. Thanks - Neil Perera



HOLIDAYS

J&MB Travel

Coach Holidays 2018

Date	Destination	Days	Hotel	Inc/Theme	Cost
26 Jan	Bournemouth	3	Suncliff	All Inclusive	115
16 Feb	Bournemouth	4	Suncliff	All Inclusive	180
24 Feb	Folkestone	4	Burstin	France Day Trip	140
2 Mar	Paignton	4	Queens	Cosy Break	170
5 Mar	Newquay	5	Esplanade	All Inclusive	285
12 Mar	Sand Bay	5	Holiday Village	It's the 1960's again	195
19 Mar	Mystery	5	????		270
26 Mar	Eastbourne	5	Alexandra	Spring is Back...	215

Prices are per person when sharing a double or twin room

Call now for our 2018 brochure
01536 202660

To advertise in Nene Valley News call **01522 513515**



BUSINESS SERVICES

Do you need a BUSINESS COACH

To lift financial worries or burnout to fulfil your hopes and dreams?

To make your business strong and growing with our Business Coach to help you every day.

All problems can be solved!

David Hamblin Bsc F.I.M.I
Call 07563536678 (Anytime)
or after 5pm 01933 413268



CARE HOMES

Rose Cottage Residential Care Home Woodford

For the elderly and dementia

We are a small care home with eight residents only. All rooms are single en-suite and ground floor. We provide respite care and day care.

Telephone 01832 735417
www.rosecottagewoodford.co.uk

Follow us on Facebook



HOME IMPROVEMENTS

Jon Spencer Technical Drawing Services

Plans drawn for planning and building regulation applications
01933 316044

CONSERVATORIES

EG VICTORIAN 3500 BY 3500
FULLY INSTALLED INCLUDING
ALL BRICKWORK AND VAT

£7250

ALL OTHER DESIGNS AND SIZES AVAILABLE
UNBEATABLE PRICES
PHONE NICK ALLINGTON ON
(01832) 734070
WWW.CONSERVATORIESBUILT.CO.UK

KitchenDoor Solutions

Replacement doors and kitchen refurbishment
Doors available in solid wood, painted and laminate finishes



Iain Smith

Tel: 01933 311310

Mob: 07583 869741

SPECIALISTS SINCE 1980

The **WOODWORKS** Kitchen service

SPECIALISTS IN ALL ASPECTS OF KITCHEN REFURBISHMENT

Replacement Kitchen doors
Worktops supplied & fitted
Sinks, Taps & Appliances
Wardrobes built & fitted
Made to measure
Bathroom furniture

Update your existing kitchen to give you stunning looks, optimised storage space and Increased accessibility

WWW.WOODWORKS-KITCHENS.CO.UK Call now for a free no obligation quote
Family business est 1999 01933 449239

!!!GET PLASTERED!!!

For all your plastering needs.
No job too small, no fuss, no nonsense!
Reliable and trustworthy service at the best possible price.
Call Steve for free, friendly advice or a free quote.

30 years experience
Qualified tradesman

07703 720138 • 01933 430051

Ashby's Allsorts
Home Improvement & Handyman Services

Free Estimates
No Job Too Small
Inside and Outside Work Undertaken
Public Liability Insurance
Quality Work at Competitive Prices

Tel: 01832 771020
Mobile: 07584 673767
Email: contact@ashbys-allsorts.co.uk
www.ashbys-allsorts.co.uk

Based in Thrapston, we service a radius of 30ish miles

JW CLARK DRIVE IN & COLLECT

Chowns Mill IRTHLINGBOROUGH NN9 5QQ
Behind 'The Old Mill' furniture warehouse

Ballast • Type 1 MOT • Gravel • Sand • Topsoil
All aggregates available for delivery or collection
We also sell firewood & cement!
01933 628273 www.clark-aggregates.co.uk

ALAN TAYLOR
For your local plastering

Boarding, Covering, Rendering
All aspects of plastering. Enquiries welcome.
Call Alan for a free quotation or advice on
01933 430098 or 07977 926717

Debbie Dawson & Son Interior Painters and Decorators

• Free estimates • Over 15 years experience
Tel: 01832 274652 Mobile: 07779 393458

10% DISCOUNT FOR OVER 70's

Simon Vale
Painter & Decorator

High quality • Competitive prices
Free estimates
07568 587367 or 01933 228671



HOME SERVICES

CLEAR THE JUNK
The Rose Clearance Service

Full - Part - Single Items.
Fully Registered and Insured. Est 30 years.
www.rose-clearance-services.co.uk
Tel: 07761 248266/07443 605859

Plumber — local & fast!
RGJ PLUMBING AND HEATING

Plumbing

- Full bathroom installation (inc carpentry & tiling)
- Burst pipes & leaks
- Toilet repair/replace
- Taps, sinks repair/replace
- Showers repair/replace & pumps

Heating

- Full central heating installation
- Boiler servicing/breakdowns
- Landlord safety certificates
- Power flushing
- Radiators & valves
- Pumps & cylinders

No call-out charge!
City & Guilds Qualified
All work guaranteed

01933 588005 or 07921 469471

Part P Registered **A. SEATON ELECTRICAL LTD**

- Rewires, fuse board replacements
- Fault finding, extra sockets & lights
- Testing, inspection & certification
- No job too small, free estimates given

Email: seatonsparky@gmail.com
T: 01933 778504 M: 07952 249885

PGR
Plumbing & Heating
Tel: 01933 698116
24 Hr Emergency Service
Email: pgrplumbing@btinternet.com
Web: www.pgrplumbing.co.uk

Specialists in:
Gas Servicing & Maintenance
Landlords Gas Safety Certificates
Gas Installations
Central Heating Powerflushing
Household Plumbing & Drainage

CLARK COAL SUPPLIES

DELIVERED FREE TO RUSHDEN, HIGHAM FERRERS AND SURROUNDING VILLAGES

MINIMUM DELIVERY 5 BAGS
CASH ON DELIVERY
TELEPHONE 01933 314742

ENSIGN GAS ENGINEERS

**GAS FIRES, GAS COOKERS
INSTALLATION, SERVICE AND REPAIR**

Recommended service agent for:
Focal Point Fires, Superior Fires and Eco Fires

NO CALL OUT CHARGE
Tel: 01933 318327

**COSTUME JEWELLERY AND ALL UNWANTED JEWELLERY
BROKEN OR PERFECT BOUGHT.**
ALSO OLD WATCHES AND COINS.
ANY QUANTITY. JILL WILDING 01832 737803.

DC Heating
SAFE IN OUR HANDS

YOUR LOCAL PROFESSIONAL HEATING AND PLUMBING ENGINEERS YOU CAN TRUST

REPAIRS
SERVICING
INSTALLATIONS

Phone today for a free quotation on
Tel: 01933 392 719
www.dcheatingengineers.co.uk

HANDY HERBERTS
Home & Garden Maintenance

All garden and exterior maintenance work undertaken including professional gutter cleaning, graveling, fencing, external painting and hedge trimming.

01933 563365 or 07725 225214
handyherberts@yahoo.co.uk

Reliable Handyman

35 years experience
No job too small
enquiries welcome

Please ring Andy on
07958 684050 or 01933 713207

Easyflow Plumbing
Plumbing & Heating Services

Bathroom Installations
Heating Systems
General Household Plumbing

Tel: 07840 254 025 or 01604 946896
roberttradford77@gmail.com

PLUMBER

All plumbing work undertaken - No call out charge

Toilet repairs - Dripping overflows - Leaks and bursts
Garden taps installed - Tap repairs and replacements
Radiators supplied and fitted

20 years' experience
Call Tim 01832 358248 or 07957 550660

Greys Painting & Decorating

All Aspects Reliable Clean Professional Service
Competitive Rates
References Available
Free Quotes
Fully Insured
All Small Jobs Welcome

01933 383 505
07734 462 091

DONNO R G TV/AERIAL SERVICES
Est 1981

TV/DVD repairs, servicing at your home if possible.
Full installation service available. Freesat and Freeview digital aerials supplied and installed from £80. All work guaranteed.
No call out charge locally. Free estimates on repairs.

Tel: 01933 356680



PET SERVICES

Country Companions Pet Services

Services include:
Doggy Day Care
Dog Walking
Puppy Visits
Pet Sitting
Cat Visits
Home Boarding

Contact Sarah on:
07766 523292
www.ccpetservices.co.uk
sarah@ccpetservices.co.uk



REMOVALS

David Mallett
REMOVALS & GENERAL HAULAGE

For a **FREE** quotation call
Mob: 0788 996 8064
Tel: 01832 731570

Local Friendly Service

Marty Movers. Man and van removals and delivery service. Northants and surrounding areas. Free quotes. 7 days per week
07830187960.

NENE & WELLAND CALLCONNECT

Serving Oundle,
Peterborough, Stamford,
Thrapston and
surrounding
villages

CallConnect is a unique bus service whose timetable is not fixed but responds to passenger requests. The service runs from 7am - 7pm Monday - Saturday. Routes are different each day depending on the bookings made by passengers. Journey requests can be made by telephone or online. The service is designed to improve transport links in the Oundle & Thrapston areas.

For more information & to book a journey:
0345 2638153
www.wellandcallconnect.co.uk

Follow us on Twitter @CallConnectbus



PUBLIC NOTICES

East Northamptonshire Council

PUBLIC NOTICE

TOWN AND COUNTRY PLANNING ACT 1990 (AMENDED BY THE LOCALISM ACT 2011)
NEIGHBOURHOOD DEVELOPMENT PLANNING (GENERAL) REGULATIONS 2012 (as amended)

SUBMISSION OF THE NEIGHBOURHOOD DEVELOPMENT PLAN FOR THE PARISH OF GLAPHORN (GLAPHORN NEIGHBOURHOOD PLAN 2016-2031): CONSULTATION UNDER REGULATION 16 OF THE NEIGHBOURHOOD PLANNING (GENERAL) REGULATIONS 2012

Notice is given, that on 14 December 2017 Glaphorn Parish Council submitted a draft neighbourhood development plan (Glaphorn Neighbourhood Plan 2016-2031) to East Northamptonshire Council, under Regulation 15 of the Neighbourhood Planning (General) Regulations 2012 (as amended).

The 'plan proposal'

In accordance with Regulation 16, East Northamptonshire Council is now consulting upon the draft Glaphorn Neighbourhood Plan. Comments are invited, regarding whether the 'plan proposal', as submitted under Regulation 15 (the draft Neighbourhood Plan and supporting documentation) fulfils the "basic conditions", as required by paragraph 8 (1) (a) (2) of Schedule 4B to the Town and Country Planning Act 1990 (inserted by the Localism Act 2011). The plan proposal, as submitted, comprises the following documents:

- A map identifying the area to which the proposed neighbourhood development plan relates;
- A consultation statement;
- The proposed neighbourhood development plan;
- A statement (the "Basic Conditions Statement") explaining how the proposed neighbourhood development plan meets the requirements of paragraph 8 of Schedule 4B to the Town and Country Planning Act 1990.

The "basic conditions"

Representations received under Regulation 16 regarding the plan proposal will be forwarded to an appointed examiner, who will assess the Glaphorn Neighbourhood Plan and supporting documents against the "basic conditions". These require that the plan:

- Has regard to national policy and guidance from the Secretary of State;
- Contributes to sustainable development;
- Is in general conformity with the strategic policy of the development plan for the area or any part of that area;
- Doesn't breach or is otherwise compatible with EU obligations – this includes the SEA Directive of 2001/42/EC; and that
- The making of the Neighbourhood Development Plan is not likely to have a significant effect on a European site (as defined in the Conservation of Habitats and Species Regulations 2010(d)), either alone or in combination with other plans or projects.

Submitting representations under Regulation 16

Comments are sought as to whether or not the plan proposal (Glaphorn Neighbourhood Plan and supporting documentation) fulfils the "basic conditions". Further information can be found on the Council's website under the consultation pages at the following link: <http://www.east-northamptonshire.gov.uk/consultation>.

Copies of the plan proposal will be available to view at the following locations, between **Friday, 12 January and Monday, 26 February 2018** inclusive:

- Customer Service Centre, Cedar Drive, Thrapston, NN14 4LZ (8:45am – 5pm Mon, Tues, Thurs, Fri; 9:45am – 5pm Wed)
- Customer Service Centre, Newton Road, Rushden, NN10 0PT (9am – 4:30pm Mon, Tues, Thurs, Fri; 9:45am – 5pm Wed)
- Customer Service Centre, Oundle Library, Glaphorn Road, Oundle, PE8 4JA (10am-1pm, Mon to Fri)
- Thrapston Library, High Street, Thrapston, NN14 4JJ (10am-6pm, Tues to Fri; 10am-2pm, Saturday; 11am-2pm, Sunday)

Comments should be made, in writing, to: Planning Policy and Conservation, East Northamptonshire Council, Cedar Drive, Thrapston, Kettering NN14 4LZ or by e-mail to planningpolicy@east-northamptonshire.gov.uk, no later than **4pm on Monday, 26 February 2018**.

Paul Bland
Head of Planning Services
East Northamptonshire Council

East Northamptonshire Council

EAST NORTHAMPTONSHIRE COUNCIL

TOWN AND COUNTRY PLANNING ACT 1990

TOWN AND COUNTRY PLANNING (GENERAL PERMITTED DEVELOPMENT) (ENGLAND) ORDER 2015

DIRECTION MADE UNDER ARTICLE 4(1)

RELATING TO THE BRIGSTOCK CONSERVATION AREA

NOTICE IS HEREBY GIVEN that East Northamptonshire Council on 9 January 2018 made a Direction under Article 4(1) of the Town and Country Planning (General Permitted Development) (England) Order 2015 which affects certain land in the District of East Northamptonshire.

The Direction applies to development described in the following classes to the Town and Country Planning (General Permitted Development) (England) Order 2015 in respect of the land known as the Brigstock Conservation Area, as shown edged black on the plan attached to the Direction.

SCHEDULE

- The enlargement, improvement or other alteration of a dwelling house being development comprised within Class A, Part 1 of schedule 2 to the Order and not being development comprised within any Class.
- Any other alteration to the roof of a dwellinghouse being development comprised within Class C of Part 1 of Schedule 2 to the Order and not being development comprised within any other Class.
- The erection or construction of a porch outside any external door of a dwellinghouse being development comprised within Class D of Part 1 of Schedule 2 to the Order and not being development comprised within any other Class.
- The installation, alteration or replacement of a chimney, flue or soil and vent pipe on a dwellinghouse being development comprised within Class G of Part 1 of Schedule 2 to the Order and not being development comprised within any other Class.
- The installation, alteration or replacement of a microwave antenna (where 'microwave antenna' has the meaning given in the Order) on a dwellinghouse or within the curtilage of a dwellinghouse being development comprised within Class H of Part 1 of Schedule 2 to the Order and not being development comprised within any other Class.
- The erection, construction, maintenance, improvement or alteration of a gate, fence, wall or other means of enclosure being development comprised within Class A of Part 2 of Schedule 2 to the Order and not being development comprised within any other Class.
- The painting of the exterior of any building or work being development comprised within Class C of Part 2 of Schedule 2 to the Order and not being development comprised within any other Class.

The effect of the Direction is that permission granted by Article 3 of the General permitted Development Order shall not apply to development of the type specified in Schedule to this Notice and that such development shall not be carried out on the Land unless planning permission is granted by the Council on an application made to the Council under Part III of the Town and Country Planning Act 1990 (as amended).

It is intended that the Article 4 Direction will come into force, subject to confirmation by the Council, on 1 June 2018. A copy of the Direction and map showing the extent of the land affected can be viewed online at www.east-northamptonshire.gov.uk/consultations selecting the 'current consultation' link, or alternatively hard copies of the documents can be viewed at East Northamptonshire Council, Cedar Drive, Thrapston, NN14 4LZ during normal office hours.

The start date of the period during which representations may be made to the Council regarding the making of the Article 4 Direction is 15 January 2018. The period for making representations ends on 26 February 2018. Representations should be delivered to Planning Policy at the address above, or sent by e-mail to planningpolicy@east-northamptonshire.gov.uk quoting reference BA42018. Representations should arrive at the Council no later than 5:00 pm on 26 February 2018. The Council will take into account any representations that are received in writing by 26 February 2018 in deciding whether to confirm the making of the Article 4 Direction. Please be aware that all comments received will be available to view online minus your email address, signature, telephone number and address.

Dated: 9 January 2018

Paul Bland
Head of Planning Services
East Northamptonshire Council

NORTHAMPTONSHIRE COUNTY COUNCIL

ROAD TRAFFIC REGULATION ACT 1984 – SECTION 14

THE NORTHAMPTONSHIRE COUNTY COUNCIL (PUBLIC BRIDLEWAY PE21 – PARISH OF WOODFORD & PUBLIC BRIDLEWAY MU11 – PARISH OF DENFORD)

(TEMPORARY CLOSURE) ORDER 2018

NOTICE IS HEREBY GIVEN that Northamptonshire County Council intend, not less than seven days from the date of this Notice, to make an Order the effect of which is to prohibit all equestrians and cyclists from proceeding along those lengths of Public Bridleway PE21 in the Parish of Woodford and Public Bridleway MU11 in the Parish of Denford as specified below. Private access to land or premises adjacent to the said lengths of bridleways is unaffected.

RIGHT OF WAY TO WHICH RESTRICTION APPLIES: The existing route of PE24 to be closed begins at point A at National Grid Reference SP9819 7693. The route travels generally east for approximately 470 metres where it becomes MU11. It continues east for a further 555 metres to point B at NGR SP9916 7688. The route then heads south east for approximately 182 metres to point C at NGR SP9921 7670. The route is shown by a solid black line between points A – B – C. The route remains open to pedestrians between points A – B.

REASONS FOR RESTRICTION: The restriction is required for works to bridges.

PERIOD OF CLOSURE: The Order will come into effect on 9th February 2018 and will continue in force for a period of six months. An application may be made for the approval of the Secretary of State for Transport for this Order to be extended if this proves necessary. However, the restriction specified will have effect only at such times and to such extent as is indicated by the display of notices.

ALTERNATIVE ROUTES: There is no suitable alternative route.

Dated this 13th day of January 2018
QUENTIN BAKER, Director of Law & Governance
PKG/ROW/307

If you require any further information please contact JBA – Bentley Contracts Manager – 07812 086761.

NORTHAMPTONSHIRE COUNTY COUNCIL

ROAD TRAFFIC REGULATION ACT 1984 – SECTION 14

THE NORTHAMPTONSHIRE COUNTY COUNCIL (PUBLIC BRIDLEWAY UG38 (PART) – PARISH OF RAUNDS)

(TEMPORARY CLOSURE) ORDER 2018

NOTICE IS HEREBY GIVEN that Northamptonshire County Council intend, not less than seven days from the date of this Notice, to make an Order the effect of which is to prohibit all pedestrians, equestrians and cyclists from proceeding along that length of Public Bridleway UG38 in the Parish of Raunds as specified below. Private access to land or premises adjacent to the said length of bridleway is unaffected.

RIGHT OF WAY TO WHICH RESTRICTION APPLIES: The existing route to be closed begins at point A at National Grid Reference ('NGR') SP9803 7282. The route travels generally east for 206 metres to point B at NGR SP9824 7283. The route is shown by a solid black line between points A – B.

REASONS FOR RESTRICTION: The restriction is required for construction of an underpass.

PERIOD OF CLOSURE: The Order will come into effect on 6th February 2018 and will continue in force for a period of six months. An application may be made for the approval of the Secretary of State for Transport for this Order to be extended if this proves necessary. However, the restriction specified will have effect only at such times and to such extent as is indicated by the display of notices.

ALTERNATIVE ROUTES: The alternative route starts at point A at NGR SP9803 7282. The route travels generally south east for 137 metres to point C at NGR SP9816 7278. The route then heads north east for 97 metres to point B at NGR SP9824 7283. The alternative route is shown by a broken black line between points A – C – B.

Dated this 13th day of January 2018
QUENTIN BAKER, Director of Law & Governance
PKG/ROW/305

If you require any further information please contact Ken Brown (Roxhill) 01788 538456.



JOBS BOARD

AVERY UK

New Year New Opportunity!

**We currently have a vacancy for a:
Sales & Customer Service Executive**

We are looking for an office based Sales & Customer Service Executive to help us with continued growth in our market. The successful candidate will offer unparalleled customer service and support whilst promoting our position as the "Go To" manufacturer in the market.

As well as a competitive salary, this role offers an extensive range of benefits, including 26 days holiday per annum, pension scheme, private health cover, healthcare cash plan and life assurance.

For a full job description detailing the responsibilities and requirements for the above position please visit our website www.avery.co.uk/jobs if you have the necessary experience and are interested in applying for this role, please email a cover letter and CV to uk.careers@avery.com

Closing date for applications: Friday 26 January 2018
(may close earlier subject to interest)

To advertise in Nene Valley News please call
01522 513515

East Northants Snooker League

Week 11 of the ENSL sponsored by The Pumphouse Café. Despite the Christmas break, Windmill C showed no rustiness as they continued their unbeaten run as they won 4-2 away at Coopers A. The ever-steady James Rawlins beat Steve Biggs 2-0 and Will Manning-Ross put the leaders 3-0 up with a cool break of 45, but Steve Neighbour took the 4th frame. In a clash of the captains, Justin Gaggini and Marc Brett shared the last two frames.

Second placed Windmill Warriors were looking to keep the pressure on as they hosted Higham SAS. Mike Wilson and the in-form Richard Wright shared the opening two frames and a jubilant Paul Lewis looked in fine form with an array of long potting as he dismantled Pete Belg who didn't really get a look in. Dave Tennant took the 5th frame, but Michael Dicks sealed the 4-2 victory with a 31 break in the 6th frame.

A tight match between Windmill Underdogs and Windmill Weapons, although Neal Vaughan got the Underdogs off to the perfect start easing past Sean Britchford 2-0. Neil Darling hit straight back for the Weapons winning his frames against Kevin Freeman with the 4th frame being decided on the black. Steven Williams put the Weapons 3-2 in the 5th frame with near flawless snooker. Despite this, Scott Rose hit

back to make the final score 3-3.

Tony Jupp of Windmill B continued his form as he beat an out of sorts Lee Bunker 2-0. However, Martyn Hatton played some steady match snooker beating Roy Barlow to square the match up at 2-2. Alan Jupp rolled back the years in the final two frames beating a below-par Steven Ridgewell which gave the Windmill B team a 4-2 victory.

Windmill G were looking for back to back wins and Craig Back put them 1-0 up against Windmill Mecca, but Matt Barcock cleared up with a 34 break to pinch the 2nd frame. Darren Fenner then won the 3rd frame but the wily Jay Thomas won the next to set up an intriguing last two frames between Mick Gordon and Wayne Gardner. Wayne ended up being too good for MG as he comfortably won 2-0 with a couple of 29 breaks along the way. The Mecca surge continues.

Windmill C maintain their three point advantage over Windmill Warriors at the top of the table. Stewart Brown remains top of the averages on a 75% win-rate, although he has now been joined by Neal Vaughan following his performance this week.

Results for week 11:
Windmill Warriors 4-2 Higham SAS
Windmill B 4-2 Coopers Ball Bashers

Coopers A 2-4 Windmill C
Windmill G 2-4 Windmill Mecca
Windmill Underdogs 3-3 Windmill Weapons

The winter competitions have been in progress since December. In the Scratch Singles, sponsored by Home Outlet, Dave Tennant, Kevin Freeman and Wayne Gardner each won their matches to advance to the

quarter-finals. In the Handicap Singles, sponsored by Sound Systems, Richard Wright is the first player through to the quarter finals beating Dave Tennant. The Handicap Doubles, sponsored by NJF Plastering, is also now underway. Matt Barcock and Ricky Ellis being the first pairing into the quarter finals. Lots more competition matches to be played throughout January.



East Northants Snooker League - Sponsored by Pumphouse Café Wellingborough

Position	Team	Played	Won	Drawn	Lost	Points
1	Windmill C	11	8	3	0	42
2	Windmill Warriors	11	5	4	2	39
3	Windmill Underdogs	11	5	2	4	37
4	Coopers Ball Bashers	11	5	2	4	34
5	Windmill G	11	5	1	5	33
6	Windmill Mecca	11	4	4	3	33
7	Windmill B	11	4	2	5	30
8	Higham SAS	11	3	1	7	29
9	Coopers A	11	1	4	6	28
10	Windmill Weapons	11	2	3	6	25

If you are interested in joining the League, you can find us via Facebook or Google – East Northants Snooker League. We would welcome more teams.

GARDEN DESIGN | LANDSCAPING | DRIVEWAYS



Matt Bettison
GARDEN DESIGN

Designer Gardens

Matt Bettison is based in Thrapston and serves throughout Northamptonshire and surrounding counties providing Garden Design and Landscaping. Offering expert garden design which is original and affordable, a professional garden designer will work with you to achieve a stunning outdoor space.

In all of our high quality designs we feature full plant specifications and we tailor any of our designs to your full requirements. We are experienced in producing gardens of any size and shape and can meet the needs for your perfect outdoor space.

Our landscaping team is fully qualified and experienced as well as being backed by Northamptonshire County Council as part of their 'Buy With Confidence' scheme. Having not just the construction work but the entire business 'Approved by Trading Standards' gives you peace of mind. Another seal of approval comes from being recognised by Bradstone as part of their Bradstone Assured scheme.

A professionally designed garden will not cost the earth and will last a lifetime.





Matt Bettison BA (Hons) Garden Designer
W: www.MattBettison.com • E: Matt@MattBettison.com • T: 01832 733328 • M: 07743 870420