

Nene Valley

news

Your local independent community newspaper for East Northamptonshire

Telephone:
01522 513515

We want to hear from you,
so please submit your
news story or event at
www.nenevalleynews.co.uk

Inside...



Spotlight on Higham Ferrers

Page 4



Fire service supports new app

Page 13

In Brief

Oundle Christmas Tree 2018

The President of the Oundle Rotary Club has written to the Town Council explaining that with effect from this year they can no longer provide the Town's Christmas tree. Apparently, the Club first helped with the tree many years ago but they now feel that it would be better provided by the Council. Obviously, the ceremony of turning on the lights and the very presence of the tree in the Market Square are beneficial to the Town generally and traders in particular. The Club's President explained that changing circumstances meant that they could no longer be responsible for the erection, maintenance and removal of the tree. She went on to say that they were extremely disappointed to have had to make this decision. Perhaps the Oundle Business Association would be able to step into the breach?

Police raid homes in East Northants as part of Operation Viper

Police officers executed two warrants in East Northants recently as part of Operation Viper, the force's crackdown on serious and organised crime.

The first warrant was executed in Weighbridge Way, Raunds, at an address where concerns had been raised about the occupant, who officers believed to be the subject of cuckooing, a practice which sees gangs take over the property of a vulnerable person in order to deal drugs.

No one was in the property at the time of the warrant, however officers conducted a thorough search of the premises.

The second warrant was executed at a property in Irchester Road,

Rushden, where items including a knuckle duster were recovered.

Speaking on the day of the raids, Detective Chief Inspector Julie Mead, said: "This is the first of our proactive days for Operation Viper. Serious and organised crime is something we need to address and is affecting all of our communities.

"Today we have a series of warrants and part of that warrant process is around safeguarding potential victims of cuckooing.

"The main aim of today was to make sure we safeguarded the person who's inside and to do that with partners, and to make sure they get the support and care that they need so they don't fall foul of cuckooing again."

The force is reliant on public help as part of the Operation. You are encouraged to contact them to report any relevant information.



If you have any concerns or would like to report any information to the police call 101, report a crime online or via independent charity Crimestoppers anonymously on 0800 555 111.



SHOWROOMS: 69-71 WASHBROOK RD • RUSHDEN • NORTHANTS NN10 6UR action2mobility.co.uk



Wet rooms
and easy access
bathrooms
supplied
and fitted

Action²Mobility
THE REGION'S LEADING MOBILITY AID CENTRE

10% OFF

BRING THIS AD WITH YOU
AND GET 10% OFF ANY
INSTORE PURCHASE*

CALL FREE: 0800 698 2588

MON-FRI 8am-4.30pm

FREE PARKING

Stockist of Cosyfeet and Sandpiper shoes

STAIRLIFTS: FULLY GUARANTEED, FREE HOME SURVEY

*MINIMUM PURCHASE £10. OFFER ENDS 22.09.18 (NOT IN CONJUNCTION WITH ANY OTHER OFFER)

Oundle north bridge: Council update

We have received the following comments about the north bridge in Oundle from Northamptonshire County Council: "We continue to develop the design for the width restriction for the self-enforcement of the 3 tonnes weight limit and looking at the signage requirements. We are looking at various options for the width restrictions and their effect upon traffic flows through Oundle. We will then present these to the Oundle Town Council and local parishes working party to discuss our proposals and the consultation process."

"We currently anticipate the width restrictions on the Oundle side of the bridge will have to be positioned on the bridge before the first arch. As the bridge is a listed structure we have contacted East Northamptonshire District Council planning office who have

confirmed we require listed building consent and we will be meeting with East Northamptonshire District Council Planning officers to discuss their requirements.

"We are also looking at the possible use of traffic signals at the Barnwell Road /A605 Oundle bypass junction to facilitate the flow of traffic.

"We have placed a Traffic Regulation Order (TRO) to revoke the 18 tonne amenity weight restriction on Oundle South Bridge. This will follow the same process as the TRO for Oundle North and will go through at the same time as the 3 tonnes weight limit on Oundle North.

"At this stage we are unable to give more information on timescales. Consultation with all affected parties will be undertaken prior to any plans being finalised."

Genealogy jottings

I recently took advantage of the GRO pilot for having a pdf of a certificate emailed to me rather than wait for it to arrive through the post. (Note: this just applies to birth and death certificates, not marriage.)

I had a sister of my great grandmother Millicent disappear into the ether after the 1871 census, when the family had been living in Tunbridge Wells, Kent. By 1881, Millicent and her mother Harriet (plus some siblings but not Alice) were living in Brighton. There was no trace of her in the 1881 census nor could I find a marriage. However, later in 1871 there was a death of a 10-year-old Alice in the Ticehurst registration district. Feeling a bit doubtful that this could be my Alice, I sent for the certificate all the same – and it was the right one! She had died of Scarlatina (Scarlet Fever) at the 'Temporary Hospital, Frant Forest'. This then required some more digging to find out about Frant. It turns out to be a very small village on the edge of Sussex and Kent – so much so that the village straddles both counties – and is also just 2.5 miles from Tunbridge Wells.

By Jan Pearson
Genealogy Specialists, Tracing Our Past, Discovering Our Genes (TOP DOG)
www.genealogy-specialists.com

It seems that Alice was sent to the hospital so that she could be isolated – scarlet fever being extremely contagious. But why 'Temporary Hospital'? This required more digging and so I posted the query on my forum – the link to which is under my name. Within two hours I was given information about a couple of newspaper articles from the time explaining that there was a fever epidemic in Tunbridge Wells, resulting in the need for an isolation hospital and so one was hastily erected in Frant Forest, just along from the cemetery. Also, a contemporary map was found that showed the hospital site. Fantastic lot, those members!

The Ticehurst registration district, although in Sussex, is adjacent to the Tunbridge Wells registration district, so it pays to check those next door!

Want to place an advertisement or submit an article?

If you wish to contribute or have any comments please email news@nenevalleynews.co.uk or call 01522 513515. To advertise, call 01522 513515. Alternatively you can email advertising@nenevalleynews.co.uk

If you are not receiving your copy of Nene Valley News, please email distribution@km-media.co.uk or telephone 01522 513515.

If you would like to receive this publication as a download, Nene Valley News is available online as a pdf at www.nenevalleynews.co.uk.

You can also subscribe to Nene Valley News for £39 per annum.

Nene Valley News is produced by KM Media & Marketing, County House, 9 Checkpoint Court, Sadler Road, Lincoln, LN6 3PW.

Copy dates for Nene Valley News

Publication date: Saturday 25th August
Articles to the editor by: Wednesday 15th August

Publication date: Saturday 8th September
Articles to the editor by: Wednesday 29th August



KM Media & Marketing
Your partner in publishing
ONLINE | IN PRINT | IN DIGITAL

Editor's notes

From the look of most of the parched lawns and gardens in the area, in many of which plants appear to be barely surviving, people are being sensible about how they use water; perhaps this also has something to do with the fact that most of us are on metered supplies. Certainly, we have escaped a hosepipe ban so far, largely because of some rainfall to the north and west of our immediate area, but once again there doesn't appear to be much rain in the weather forecast for the next couple of weeks. If you are concerned about how to save water there are some tips on the Anglian Water website at www.anglianwater.co.uk.

On the subject of meters, the government's policy on installing smart meters to monitor and report electricity consumption seems to be in some disarray. We are all encouraged to have the meters fitted but there are stories of inaccurate readings, increased usage and an inability to use the meter if you switch suppliers. There are also concerns that if you live in an area with poor mobile signal the smart meter won't work and if that isn't a problem many experts have highlighted security fears about the devices, claiming they could be hacked. The government has rolled back from its earlier plan to have a smart meter installed in every home by 2020 and is now only offering the option. While there is an

obvious benefit in having a remote reading so that you don't have to read the meter each month the reported problems are deterring many users.

The BBC recently reported that the investigation into the disappearance of the airman Corrie Mckeague, after a night out in Bury St Edmunds, has cost £2.1m. Suffolk's Police and Crime Commissioner apparently stated that the government had agreed to contribute with a special grant, expected to be about £800,000. While that affair has been desperately sad for the young man and his family, who now appear to have accepted that his body is somewhere in Suffolk's waste disposal system, one cannot fail but to draw an unsentimental comparison with the potential cost of the repairs to the north bridge in Oundle, a problem which will affect a large number of people and businesses; the cost for the latter will be a similar sum but as yet the government remains silent on funding to support the work.

In just three months, on 11th November, we will be commemorating the ending of the First World War. Doubtless, there will be events across the District to mark the occasion and we would like to hear what you might be planning for your town or village; do contact us and let us know so that we can add a little extra publicity to support your efforts.

SCS Packaging 01933 681681
Packaging, Catering and Cleaning Supplies for Commercial, Domestic and Industrial Services

Cake Decorating Supplies
For Amateurs, Professionals and Enthusiasts

From the basics - Sugar Paste, Cake Boxes, Boards and Dummies to Cake Lace, Moulds and Cutters. We have all the Baking and Cake Decorating supplies to complete your Wonderful Creations!

Units 1 & 2 Orchard Road • Finedon • Northants • NN9 5JG
Email sales@scspackaging.co.uk • www.scspackaging.co.uk

Art Classes

Starting September 18th
Full 10 Week Course
Suitable for Beginners and Experienced
Learn Creative Skills
Painting in Various Media
Acrylic, Collage, Watercolour, Drawing.

Raunds Tuesday 10-12pm
Irthlingborough Tuesday 2pm - 4pm
Denford Wednesday 10-12pm

Contact Jamie: 07899 676769
Email: jamie@jamie-poole.com

the modern acupuncture clinic

Are you suffering from:
Stress? Anxiety? Depression?

Let us help

Discreet and compassionate care at the modern acupuncture clinic

Tel: 01933 779 973
Email: contact@modern-acupuncture.co.uk
www.modern-acupuncture.co.uk

the modern acupuncture clinic

Are you in PAIN?

Back pain, frozen shoulder, tendonitis or other musculoskeletal problems?

Let us help

Our approach at The Modern Acupuncture Clinic has a proven track record of bringing relief FAST!

Tel: 01933 779 973
Email: contact@modern-acupuncture.co.uk
www.modern-acupuncture.co.uk

Enjoy Music in Special Places this autumn

Oundle International Festival has revealed its Music in Special Places Autumn 2018 programme, which this year includes a feature Last Night of the Proms with soloist Maureen Brathwaite, the ever popular Rushden Town Band, a special evening of music by Fauré and Elgar and a return visit from The FB Pocket Orchestra.



On Saturday 8th September as a prelude to the world famous BBC Last Night at the Proms, Adele Hudson will lead an early evening 6pm concert with local soloist Maureen Brathwaite and Rushden Town Band in Oundle School's Great Hall, performing true favourites including 'Land of Hope and Glory' and 'Rule, Britannia!' All in time for attendees to get home to watch the traditional Last Night on television.

The following month, on Saturday 27th October, at St. Mary's Church, Titchmarsh, the St. Peter's Singers will commemorate the end of the First

World War with Gabriel Fauré's beautiful 'Requiem' paired with Sir Edward Elgar's 'The Spirit of England', which is dedicated "to the memory of our glorious men".

Concluding the Autumn programme in November, The FB Pocket Orchestra return as Music in Special Places guests to present their contemporary take on popular acoustic music from the late 19th and early 20th

centuries at 7pm on Saturday 24th November at All Saints and Saint James Church, Kings Cliffe.

A spring and autumn bonus of high quality artists, Oundle International Festival's Music in Special Places programme offers the opportunity to listen to wonderfully talented musicians in very special and unique locations outside of the festival's usual July dates.

Further information and tickets are available from Oundle Festival Box Office, 4 New Street, Oundle, PE8 4EA, 01832 274734 or www.oundlefestival.org.uk. If available, tickets will be sold on the door, but advance booking is recommended.

Follow Oundle International Festival and all their events on Facebook: facebook.com/oundleinternationalfestival and on twitter @OundleMusic.

Bowling wheelchair funded by East Northants Council

Oundle Bowling Club was pleased to host East Northants Council for a handover ceremony of a specially adapted wheelchair suitable for disabled bowlers. The wheelchair and an access ramp to the green was funded by the ENC Empowerment grant.

Disabled club member John Cunnington tried out the wheelchair and declared it a great success, as he can now visit the club, see his friends, and bowl whenever he wants.

Purchase of the wheelchair and other items of equipment makes Oundle Bowling Club now fully

inclusive for all abled bodied and disabled players, to join and enjoy the great sport of bowls.

Council members attending the event were, Wendy Brackenbury (Chair of the Council) Jake Vowles, Phillip Stearn and Rupert Reichold who represent Oundle.

DB FACTORY SHOE STORE
LARGEST CHOICE & BEST PRICES
New Styles NOW IN

10% OFF
WITH THIS ADVERT
Quote: NVX1818F
Valid until 15/09/18

Wide feet or foot problems?
WE CAN HELP! Visit our specialist shoe fitting centre (on the same site)
Call 01933 410305
www.widerfitshoes.co.uk
Opening times: Mon - Sat 10am - 4pm

Opening times: Mon - Sat 10am - 5pm.
Sun 10am - 4pm.
www.dbfactoryshop.co.uk
DB Shoes Ltd, 19-21 Irchester Road, Rushden, Northants NN10 9XF

SKECHERS **DUNLOP**
PROTECTIVE FOOTWEAR

FREE ROADSIDE PARKING

Your Dream Bathroom Starts Here

The Bathroom Fitting Co
Professional Bathroom Installation By Experts
FREE PHONE 0800 009 6966
Online Brochure-www.bathroomfitting.co
Email-info@bathroomfitting.co

Roca . Vitra . Grohe . Kudos . Laufen . RAK . Burlington . Aqualisa . Duravit . Ideal Standard

Abbott House Care Home
Glaphorn Road, Oundle, Peterborough PE8 4JA

A bright and happy residential care home located in the market town of Oundle.

Single en-suite rooms with bright communal lounge and dining areas, where residents can socialise. Fresh home cooked food from our in house kitchen. Creative and social activities arranged by our dedicated Activity Champion. Mature secure gardens with access for all residents and families to enjoy outdoor space.

Home Manager: Julie Chinnick
Call: 01832 277 650 Email: AbbottHouse.Manager@Shaw.co.uk

Follow us: @shawhealthcare shawhealthcare www.shaw.co.uk

Spotlight on Higham Ferrers

Higham Eye Care

Higham Eye Care, an independent optician for Higham Ferrers and the surrounding area, opened in January 2018 to continue the tradition of Dr Jonathan Pointer who retired in December 2017 after nearly 30 years of service.

The lead optometrists, Hannah and Tricia, are sisters who each have over 20 years' experience. They will provide high quality eye examinations, professional advice, spectacles and contact lenses with a friendly and welcoming manner.

They have a wide range of frames which should suit all tastes, ages and budgets! Eye examinations are available most days. Please do call to book or pop in to take a look.

Higham Eye Care is situated on the Market Square in Higham Ferrers, with free parking directly opposite. It is easily accessible for elderly and disabled patients with wheelchair access throughout. Hannah and Tricia are fully adaptable to patients with special needs as they have an autistic family member, so they are both very used to adapting their routine. Higham Eye Care will always be happy to discuss how best to make someone's practice visit as relaxed and stress-free as possible. This may mean familiarisation visits, a visual story or just meeting them beforehand. Please ask Higham Eye Care how they can help.

Addingtons – Kitchen and Bathroom Showroom

Come and visit our new stunning showroom for a cappuccino and design chat at 5 Wood Street, Higham Ferrers, across from The Market Square.

At Addingtons, we listen to all your needs and requirements, to design, build and install the perfect bathrooms and kitchens to suit your style.

Not only are we a Costantino Elite showroom but we are also AEG Premier Partners and an exclusive distributor for



Montrose bathroom furniture. We ensure that the products we supply are of supreme quality with impressive design options from bespoke coloured Doccia shower trays, to matching radiators and British made Mackintosh kitchen cabinetry with 15 colour options and over 12 door styles. With so many bespoke options we will certainly create a unique design that works to your taste.

Our teams of exceptional fitters from the plumbers and carpenters, to tilers and decorators are all employed and fully project managed.

See our portfolio of works, testimonials and full list of the services we offer on our websites www.addingtons-bathrooms.co.uk and www.addingtons-kitchens.co.uk

From Canterbury to Oxford, to Kimbolton, to 'the trenches'... to Higham Ferrers.

CS Plumbing and Heating

Higham Ferrers resident and well-known plumber and heating engineer Chris Stocks likes to keep in touch with his roots and serving his local community has become his passion.

Founded in 2009, Chris left his position with British Gas after 10 years to set up Chris Stocks Plumbing and Heating Ltd with a wealth of knowledge and experience to put to use. Gaining confidence and the trust of local letting agents, Chris quickly built



up a good reputation, solely from word of mouth and soon had many clients with good repeat business.

Chris bases his service provision on the proviso that his company is 'big enough to cope' with customer requirements such as the new provision of breakdown and repair cover plans, and at the same time 'small enough to care'. Affordable, honest plumbing advice and service is standard.

"Every job we go to is treated with the same importance, no matter how big or small, every customer matters to us because without them we have no business and by keeping that ethos we've retained customers and welcomed new customers from reputation."

Visit <https://www.csplumbandheat.co.uk> – to see more info or take a look at our advert on page 5.

FAMILY LAW ADVICE

We'll help you make the right choices.

- Free initial phone call
- Divorce and relationship breakdown
- Marriage and relationship planning
- Finances on separation
- Children
- Domestic violence
- Mediation



Highly rated by the Legal 500, a Who's Who of the legal world.



01933 697511
enquiries@wilsonbrowne.co.uk
wilsonbrowne.co.uk

wilson browne SOLICITORS
All the help you need

Higham Eye Care

01933 317000

Call now to book an appointment on:

01933 317000

4a Market Square
Higham Ferrers
NN10 8BP

www.highameyecare.co.uk

Email:
info@highameyecare.co.uk

Hannah & Tricia would like to welcome you to Higham Eye Care, the new independent optician for Higham Ferrers and the surrounding area.

We offer high quality eye examinations, professional advice, contact lenses, and a large range of spectacles for children and adults.

All in a friendly and welcoming environment.

Q: When does your heating and hot water supply fail?

A: Just when you need it the most!

Solution: Invest in a cover plan from your local, trusted heating engineers and **CS Plumbing and Heating Ltd** will come to your rescue
www.csplumbandheat.co.uk

Boiler	*	*	*
Boiler controls	*	*	*
First service	*	*	*
Annual service	*	*	*
Hot water cylinder	*	*	
Radiators	*	*	
Hot pipework	*	*	
Cold pipework	*	*	

Cover Plans from
CS Plumbing and Heating Ltd
Covering the Northamptonshire area

Call today on
03303 112 905

Gold* from £19.50 pm
*most popular product
Silver from £15 pm
Bronze from £12 pm

Bronze

Silver

Gold*



<https://www.csplumbandheat.co.uk/cover-plans-cs-plumbing-heating-ltd/>

Are You Waiting For PHYSIOTHERAPY?

Is the pain affecting your day-to-day life?

**GET YOUR
FREE
CONSULTATION
TODAY**
NORMALLY £48

If you want to take that pain out of your life or your back, you'll want to book Pierre Bonnaud!! I have used his services on a number of occasions when faced with back ache. Each time the issue was resolved in one session. He is an exceptional physiotherapist.

Amanda Ling

**Call 01933 328020
now to book your
FREE consultation!**

It's time to do stop that pain and get on with the rehab exercises you need.

You can get a FREE physiotherapy consultation (normally £48) at The Ashgrove Clinic and make that first step today. Yes, today!

Your 20 minute consultation with our specialist physiotherapist will...

- Assess your current injury and pain level
- Offer bespoke advice on pain management
- Give you 1:1 individual analysis for the best way to treat your pain

And, we'll get started right away.

So if you're in pain, waiting for rehab exercises, trying to improve your sport or having problems walking, why not make the first step to your recovery today?

Osteopathy | Cranial osteopathy | Gait analysis | Podiatry
Hypnotherapy | Acupuncture | CBT
Shoulder treatments Sports injury therapy
Counselling | Rhythmic movement therapy | Injury rehab

**The
Ashgrove
Clinic**

www.osteonorthamptonshire.co.uk | 01933 328 020
13 Lancaster Street, Higham Ferrers, Rushden, Northamptonshire, NN10 8HY

External designs

www.addingtons.net -

See our portfolios and services

Our sister companies have their own specific skilled and employed teams from landscapers to plumbers, carpenters, tilers and decorators.

Addington's

Visit us at our beautiful showroom, off
The Market Square, Higham Ferrers, NN10 8DL
where we can discuss how we can design, build and install your
bespoke bathroom, kitchen or landscape garden.



Looking for an appliance specialist with extensive product knowledge?



20% OFF
any single purchase

01933 355687

www.addingtons-bathrooms.co.uk -

See our portfolios and services

Internal designs



Colemans

The summer holidays are here and that can only mean one thing for students...

Get Ready For The New Term!

Whether it's a new pencil case you need or a student portfolio, look no further for all your Back to School and College requirements than Colemans.

With 11 branches in and around Northamptonshire, Colemans is a family business and is renowned for its fantastic range of products and service that is second to none.

And with 20% Student Discount until 8th September, you can get all your student stationery in one place at super-low prices!

Colemans – your destination store for all your New Term needs.

Ashgrove Clinic

Fantastic news if you're on the waiting list for physiotherapy – The Ashgrove Clinic in Higham now has a highly experienced Chartered Physio on the team! And he's offering FREE 20-minute consultations!

Also, the osteopaths from Rushden Osteopathic Clinic, previously on Bedford Road, have moved to The Ashgrove Clinic, making it one of the biggest centres for aches and pains in this area.

Owner Claire Short says: "The waiting list for physiotherapy in this area is huge. After an injury or surgery, you need to be seen early. Our Chartered Physio means you can get top quality physio straight away."

"Treating pain is what we do! Between the osteopaths, physiotherapist, sports

therapists, acupuncturist and podiatrist we can deal with pain in almost every part of the body!"

Osteopath Ruth Walker says: "Nobody should have to put up with pain or the inability to do activities they love. A simple, cost-effective course of treatment can easily sort out most issues, including back pain, neck pain, infertility issues, osteoarthritis, sprains and sports injuries. Plus, the clinic is recognised as offering one of the UK's top frozen shoulder treatments."

Get in touch on 01933 469043 or email janine@ashgrovehealth.co.uk to take advantage of the free consultation offer.

Wilson Browne Solicitors

William de Ferrers created the Borough over three quarters of a millennium ago, to promote community and prosperity, at the gates of his castle where settlers had begun to trade. A hundred or so years later came Henry Chichele (c. 1364 – 12th April 1443) who was born in Higham Ferrers, became Archbishop of Canterbury and founded All Souls College, Oxford. Later (1523) the town's castle, which had fallen into disrepair, was demolished and the stone used to build Kimbolton Castle.

Such history is befitting of the Wilson Browne Solicitors office, set on the picturesque Market Square in Higham Ferrers. The listed building is steeped in history and full of character – an ideal location to meet with our specialists who can advise on a multitude of legal issues, whether for individuals or businesses.

The Higham Ferrers office is particularly active in Residential Conveyancing and has seen an increase in property sales following the recent opening of Rushden Lakes retail park. With more and more families seeking to move to the idyllic location set by the lakes, its wildlife and easy greenway routes making them more accessible than ever.

Many visitors have been clients of the Higham Ferrers office for generations, with their parents and grandparents seeking advice on Wills and trusts.

Farming and agriculture still plays a key role in the area, with many agricultural companies choosing Wilson Browne to assist with Agricultural Property Matters, tax and estate planning. In fact the Higham Ferrers farmers' market takes place on the market square once a month.

For the last piece of our puzzle, in terms of recent history, historic WWI documents belonging to T G Tailby were unearthed in the strongroom. Tailby, who lived in Stanwick, served in the Canadian Infantry in WWI but unfortunately died just before the end of the war. His family emigrated to Canada shortly after and Partner Nina Wilson thought it befitting to entrust the documents to the safe hands of Stanwick School. The mementoes, which will be 100 years old on 26th September 2018, included the death certificate, the memorial plaque and scroll, as well as a letter from the King himself, George V.

In many ways, the firm and its office are a reflection of the town, with both sharing a considerable history and a varied past with an ample measure of heritage.





Come and visit Coffee Barne!

A family owned coffee shop with a child friendly room, great coffee, teas and our very popular milkshakes. We also do delicious afternoon teas!

2 College Street, NN10 8DZ
01933 314001

NEW TERM AHEAD! STUDENT 20% DOUBLE DISCOUNT

Colemans



£1 Savers
Look out for our Student Essentials at just £1.00 each!

Colour Inkjet Printer

• Compact unit with Scanner & Copier Functions
STUDENT SPECIAL!

£29.99

A4 Refill Pad

• 320 page lined pad
Normal Price ~~£2.49~~
STUDENT 20% DOUBLE DISCOUNT
£1.99

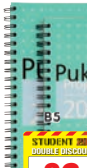
Sharpie Markers

• 24 Pens
Normal Price ~~£19.99~~
STUDENT 20% DOUBLE DISCOUNT
£15.99

Punched Pockets

• A4 size, box of 100
1 Box ~~£2.49~~
STUDENT 20% DOUBLE DISCOUNT
£1.99
2 Boxes ~~£3.98~~
STUDENT 20% DOUBLE DISCOUNT
£3.19

Project Books

A4 ~~£5.99~~
STUDENT 20% DOUBLE DISCOUNT
£4.79

• Spiral-bound lined books
PE Pukka Pad ~~£4.99~~
STUDENT 20% DOUBLE DISCOUNT
£3.99

Tipp-Ex

Mouse ~~£2.49~~
STUDENT 20% DOUBLE DISCOUNT
£1.99

Lamy Fountain Pens

• In a choice of colours
Normal Price ~~£18.90~~
LAMY
STUDENT 20% DOUBLE DISCOUNT
15.12

£1 Savers
Look out in-store for our Student Essentials at just £1.00 each!



USB Drive

• 16 GB
£9.99

Oxford Maths Set

Limited Edition!

STUDENT 20% DOUBLE DISCOUNT
£5.59
Maths Sets from **£1.83**

Name Tape Kit

Normal Price ~~£2.49~~
STUDENT 20% DOUBLE DISCOUNT
£1.99

Ring Binders

Normal Price ~~£1.29~~
STUDENT 20% DOUBLE DISCOUNT
£1.03


Exercise Books

A5 ~~£0.99~~
STUDENT 20% DOUBLE DISCOUNT
£0.79
A4 ~~£1.99~~
STUDENT 20% DOUBLE DISCOUNT
£1.59

Ballpoint Pens

Normal Price ~~£4.99~~
STUDENT 20% DOUBLE DISCOUNT
£3.99

Scientific Calculator


Helix RC2072
• For students who are 11+
RRP ~~£9.99~~
STUDENT 20% DOUBLE DISCOUNT
£7.99

Pencil Cases


From: ~~£2.99~~
STUDENT 20% DOUBLE DISCOUNT
£2.39

Cotman Sets

From: **£10.99**
STUDENT SPECIALS!

Art Studio Set

RRP ~~£45.90~~
STUDENT SPECIAL!
£12.99

Don't forget to ask for yours!

STUDENT 20% OFF DOUBLE DISCOUNT
This card entitles anyone in full-time education to 20% discount off all purchases*. Valid at all Colemans branches from 16th July to 8th September 2018.
Name:
Authorised by:
*Offer excludes some net priced special offer items & printer cartridges

Branches at:- •Bedford •Higham Ferrers •Kettering •Market Harborough •Northampton •Oakham •Oundle •Peterborough •Stamford •Towcester •Wellingborough
Please see:- www.colemans-online.co.uk for full branch details
All Prices include VAT. *Offer excludes some net priced special offer items & printer cartridges.

Keeping East Northamptonshire greener and cleaner with new waste contract

A new waste contract is set to deliver a high level of service and save taxpayers £150k a year.

The appointment of FCC Environment (UK) Limited to provide rubbish, recycling and street cleaning services in the district means that East Northamptonshire residents and businesses can expect excellent service whilst saving £1m over the seven-year contract.

Steven North, Leader of East Northamptonshire Council explains: "This new waste contract will deliver first-rate waste collection and street cleaning services to our residents as well as making significant financial savings.

"We're encouraging residents and businesses to recycle more than ever

to help make East Northamptonshire greener and reminding everyone to keep our district cleaner by making sensible use of bins.

"With opportunities to improve recycling services and investigate more environmentally friendly collection methods, we're confident that the good service we have provided to residents will continue into the new contract."

Residents will continue to receive the same fortnightly recycling and refuse

collections in the same bins as they currently do. A few residents' collection days will change to accommodate all the new houses built in the district and to ensure we are still using the most fuel efficient routes. All of those residents should have received a letter from the waste team to notify them of the changes.

Trade waste will also continue to be collected in the same way and the Garden Waste Club remains open for residents to join to recycle their green waste.

Scheme set up to keep you safe on a date

Are you single and looking to mingle? Arranged a date for this weekend? Well East Northamptonshire Council, working in partnership with Northamptonshire Police and National Pubwatch, has launched a scheme to keep you safer on your first date.

If your date isn't all that they seemed, for example they look nothing like their profile picture, are acting strangely or they simply make you feel uncomfortable, go to the bar and 'Ask for Angela'. The member of staff will see this as a sign that

something isn't right and you need help. This could simply be to keep an eye on you or even take you to a safe room and call a taxi.

The scheme has been taken up by the following businesses in the district:

- Higham Ferrers - The Queen's Head, Joe's Bar, The Carriage House, The Griffin, The Green Dragon
- Rushden - The Rose and Crown, Cheers, The Welcome Inn, Rushden Bowls Club
- Stanwick - Stanwick Club
- Raunds - The World Upside Down, Raunds Town Cricket Club, Snooks, The George and Dragon, The Red Lion, The Globe
- Thrapston - The King's Arms, The Court House
- Islip - The Woolpack Inn

• Oundle - Onkar, The Ship, Brewbabu, The Talbot Hotel, The George Inn
Cllr Steven North, Leader of East Northamptonshire Council says: "This is a great scheme to help keep our residents safer when they are enjoying a night out in East Northamptonshire. To see so many businesses already taking part, it shows that the district is a great place to live, work and have fun. I encourage more pubs and clubs to join us."

So if you're on a date and don't feel safe, go to the bar and 'Ask for Angela'.

PROMOTE YOUR BUSINESS IN IRTHLINGBOROUGH!



KM Media & Marketing are working on behalf of Irthlingborough Town Council to produce a new town guide.

It will be full of information about the local area including places to visit, shopping destinations, attractions, local clubs and much more.

For more details on how to promote your business to this discerning audience contact our sales team on:

T: 01522 513515

E: info@km-media.co.uk

*Let us design
your perfect carpet*

Bespoke carpets at High Street prices



OUNDLE CARPET WEAVERS
Manufacturers of Fine Carpets

**OCW WOOL TWIST
HEAVY DOMESTIC**
in 4 and 5 metre widths

40oz - £20 per Square Metre

50oz - £22 per Square Metre

60oz - £26 per Square Metre

NOW IN STOCK

Now your carpet can be as individual as you are.

WHERE TO FIND US Units 4/6 Eastwood Road, Oundle PE8 4DF T: 01832 275009
OPENING TIMES Monday to Saturday 9am-5.30pm or please book an appointment
ocweavers@gmail.com



Have you got some National Transport Tokens? Time is running out to use them! The scheme will end on the 31st of October 2018.

Volunteer Action Oundle Community Car Service will accept the tokens up to the 24th of October.

So book your drive with VA and use those tokens!

CALL: 01832 275433 • EMAIL: admin@volunteeractionoundle.org.uk



East
Northamptonshire
Council

Notice of planning applications received

Notice is given that the following applications have been received together with the last date for making representations:

Ashton

18/01371/FUL (25/08/2018) (Info)

Removal of asbestos garage and store and replacing with new Annexe building at 4 Elmington Cottages Elmington Oundle PE8 5JZ

Chelveston-cum-Caldecott

18/01359/FUL (25/08/2018) (Info)

Demolition and removal of existing agricultural buildings and hard standing to facilitate the erection of 5 no. dwellings and associated garages and supporting infrastructure at Site 949 Former Quarry Bidwell Lane Caldecott Chelveston

Deene

18/01297/FUL (25/08/2018) (Info)

Erection of new section of 2.0m high close boarded perimeter fence at Horizon Centre Gretton Road Deene NN17 3EZ

Easton-on-the-Hill

18/01290/LBC (01/09/2018) (LBRegs)

Renovation, extension and conversion of 2 existing barns, within the curtilage of a listed asset (Main House at 37 West Street). Works to include:

Front Barn: Windows fitted to reinstated openings to front (East) elevation. Monopitch extension to the rear. One new window opening to rear (West) elevation. One new roof light in roof to rear (West) elevation. Rear Barn: Windows fitted to reinstated / adapted openings to front elevation. Relocate arrow slit window to first floor. Three new roof lights to front roof slope. Single storey extension to side. Adapt existing opening and make new openings for windows to rear elevation. Two new roof lights to rear roof slope. Minor changes to extant consent 17/02022/LBC at 37 West Street Easton On The Hill

18/01380/FUL (25/08/2018) (Info)

Removal of existing conservatory and erection of new orangery to rear of property at 27 Westfields Easton On The Hill PE9 3LY

Higham Ferrers

18/01277/LBC (01/09/2018) (LBRegs)

To erect a blue tourist plaque to the front of the building at 5 Market Square Higham Ferrers NN10 8BP

18/01322/FUL (25/08/2018) (Info)

Erection of 2 no. 3 bedroom dwellings with integral garages at land rear of 10 Windmill Banks Higham Ferrers

Irthlingborough

18/01358/FUL (25/08/2018) (Info)

Demolition of plant at rear, refurbishment of existing buildings (including internal and external alterations) and the erection of contractors compound at Whitworths Site Welingtonborough Road Irthlingborough NN9 5RF

18/01376/ADV (25/08/2018) (Info)

Erection of signage to include: 2 no. freestanding double post illuminated signs at site boundary; 1 no. wall-mounted illuminated sign; 1 no. vinyl Aldi logo applied to glazing; 2 no. illuminated advertising posters; 2 no. low level hoop signs at Land West Of Attley Way Irthlingborough

18/01383/FUL (25/08/2018) (Info)

Front porch extension; dormer window to front elevation and new window to side elevation at second floor to enable loft conversion at 31 Waterloo Way Irthlingborough NN9

18/01389/FUL (01/09/2018) (LB/CA)

Proposed first floor extension to enclose existing balcony at 109 High Street Irthlingborough NN9 5PU

Kings Cliffe

18/01317/FUL (01/09/2018) (LB/CA)

Single storey extension to create entrance porch at Kings Cliffe Memorial Hall Church Walk Kings Cliffe PE8 6XD

18/01411/FUL (01/09/2018) (LB/CA)

Proposed re-roofing of main roofs of 70A and 72 Park Street, proposed front elevation to be Collyweston Slate and rear elevation to be Blue Slate at 70A Park Street Kings Cliffe

Laxton

18/00467/FUL and 18/00468/LBC

(01/09/2018) (LB/CA) (LBRegs)

Construction of new timber clad pool covering complete with 2 conversions from store rooms to 1x seating room and 1x wet room at Stafford Knott House Main Street Laxton

Nassington

18/01332/FUL (25/08/2018) (Info)

Development of site to provide three detached self

contained Eco Lodges for seasonal let only at land opposite Sulehay Cottage Sulehay Road Yarwell PE8 6PA

Newton Bromswold

18/01234/FUL (25/08/2018) (Info)

Change of use of agricultural grazing land to a 25 metre x 50 metre all weather menage surfaced with rubber and sand for the purpose of exercising horses at Manor Farm Rushden Road Newton Bromswold NN10 0SP

Oundle

18/01241/FUL (25/08/2018) (Info)

Erection of new 15m x 10m aluminium framed and cladded demountable building within an existing plant hire yard for storage and maintenance use at 10 Nene Valley Business Park Oundle PE8 4HN

18/01310/FUL (25/08/2018) (Info)

Erection of new workshop building on land adjacent to Oundle Rugby Club at Oundle Rugby Football Club Occupation Road Oundle PE8 4RU

Raunds

18/01192/FUL (25/08/2018) (Info)

Erection of detached triple garage at White House London Road Raunds NN9

Rushden

18/01351/FUL (25/08/2018) (Info)

Demolition of existing garage and erection of new integral garage and side extension, two single storey rear extensions and loft conversion at 174 Bedford Road Rushden NN10

18/01386/FUL (01/09/2018) (LB/CA)

Change of use of ground floor from a mixed use of A1-A2-A3 to form two A1 shop units with new door opening for shop unit 2 and one B8 unit at the rear at 2 High Street Rushden

18/01454/ADV (25/08/2018) (Info)

3 no. box signs to promote the business premises at Land Adjacent Skew Bridge Ski Slope Rushden Lakes Rushden

Stanwick

18/01354/FUL (25/08/2018) (Info)

Two storey and first floor side extension; and single storey rear extension at 14 Hill House Gardens Stanwick NN9 6QH

Stoke Doyle

18/01303/FUL (25/08/2018) (Info)

Erection of a car port (retrospective) at The Mill House Wadenhoe Road Stoke Doyle PE8 5TG

Thrapston

18/01339/FUL (25/08/2018) (Info)

Installation of roof light to front elevation roof slope at 158 Oundle Road Thrapston NN14 4PQ

18/01384/FUL (25/08/2018) (Info)

Ground floor infill extension, first floor side extension and external chimney at 19 Mason Close Thrapston NN14 4UQ

Titchmarsh

18/01326/FUL (01/09/2018) (LB/CA)

Two storey rear extension to dwelling and new garage/woodstore (Retrospective) (revised scheme to 12/01837/FUL) at 6 Church Street Titchmarsh NN14 3DB

The reason for applications being advertised is as follows:

Part3 - Town and Country Planning (General Development Procedure) Order 2015.

Part16 - Town and Country Planning (General Development Procedure) Order 2015.

Info - Non-statutory - included for information only. LB/CA - Planning (Listed Buildings and Conservation Areas Act 1990.

LBRegs - Planning (Listed Buildings and Conservation Areas) Regulations 1990.

**Paul Bland, Head Of Planning Services
Dated 11 August 2018**

Consultation deadlines will differ for each application. Please go to www.east-northamptonshire.gov.uk/planningapplications for details.

From the ENC Chairman

My role as Chair of East Northamptonshire Council takes me all over the district. This week I was fortunate to visit the historic market town of Oundle, in particular its very active and popular bowls club.

I was invited to a ceremony for the handover of a specially adapted wheelchair suitable for disabled bowlers. This very helpful piece of kit was funded by the East Northamptonshire Member Empowerment Fund so we were joined by the three Oundle Ward councillors who had made it possible – Rupert Reichold, Jake Vowles and Phil Stearn.

We were given a demonstration, with one of the Club's members delivering a number of bowls from the chair, which was impressive.

The Club is in the process of applying for the Disability Bowls England Kitemark, which encourages anyone with a disability to play.

On a very warm day, we were especially pleased to be offered a refreshing cup of tea after the handover and to be able to admire the well kept grounds which included a beautiful display of flowers.

From sports to arts, I represented the district at a private exhibition of motorsport art. There were some wonderful

pieces on display that captured the excitement and thrills of motorsport so well. It is always a pleasure to see people's passions come together in such talented ways. The exhibition was rounded off with an afternoon tea and some generous donations were made to my chosen charities for the year – Pancreatic Cancer UK and Northamptonshire Search and Rescue. Many thanks to Councillor Glenvil Greenwood-Smith for organising the afternoon.

*Cllr Wendy
Brackenbury
ENC Chairman*



ENC Chairman, Wendy Brackenbury with Oundle Ward councillors and members of Oundle Bowls Club

Locals enjoy day of fun and fundraising

Ringstead Village Social Club hosted its fourth annual charity event to raise funds for both Teenage Cancer Trust and Cancer Research UK.

The day, organised by local residents Allyson Harrison and Sara Sharman, got off to a great start with a fete and football match on the village recreation ground. This was followed by a barbecue and entertainment in the Club's garden. The fun continued

with evening entertainment, which included a disco and live band, Rusty Spoons.

During the evening's proceedings Mr Pete Newman, a company representative of Mick George, was warmly welcomed and formally thanked for the grant from the Mick George Community Fund which has enabled the Club to install a new kitchen. The facility has brought huge benefits to the Club, in particular on the occasion

of charity events, when catering is required.

Local businesses, friends, family and villagers all donated items for a grand charity auction and magnificent raffle.

The whole day's events proved to be very popular with many families and friends helping to make this a memorable day.

Sara and Allyson would like to thank everyone for their help and support in raising over £3,500 for the two chosen charities.



Neighbourhood planning update: Glapthorn, Rushden and Brigstock

Progress continues to be made with preparing Neighbourhood Plans throughout East Northamptonshire.

Neighbourhood Plans allow communities (led by town and parish councils) to set their own (town/ parish) level planning policies for determining planning applications, adding local direction and distinctiveness to East Northamptonshire Local Plan and national planning policies.

The following Neighbourhood Plans have now reached significant milestones.

- Most recently, the Glapthorn Neighbourhood Plan 2016-2031 was "made" (adopted) by the Council on 30th July 2018, having been passed at referendum on 5th July. The plan was overwhelmingly supported at referendum, with 88% in favour on a record 61% turnout.
- Previously, the Rushden Neighbourhood Plan was "made" by the Council on 4th June 2018, having been passed at referendum on 24th May.
- The Brigstock Neighbourhood Development Plan 2011-2031 is the next Neighbourhood Plan expected to go to referendum. It is currently under examination and the referendum is anticipated to take place late in the autumn. Various other Neighbourhood Plans are expected to come forward during the coming months. The 1st draft Neighbourhood Plan for

King's Cliffe was published for consultation last year and it may be submitted to the Council for independent examination in the autumn. Similarly, the 1st draft Barrowden and Wakerley Neighbourhood Plan consultation took place during April/May 2018 and it may be submitted for examination by early 2019.

Neighbourhood Plans for Barnwell, Ringstead and Warmington are all progressing, with publication of the 1st draft versions of these plans likely during 2019.



The Glapthorn Neighbourhood Plan referendum enjoyed huge local support with a 61% turnout. Thank you to all those who took part

Further information regarding neighbourhood planning is available at www.east-northamptonshire.gov.uk/neighbourhoodplanning or on 01832 742010.

Wildlife news

If you had to name our most easily recognised mammal which would you choose? Almost certainly the final count would be between the badger and the hedgehog, with the fox probably finishing close behind them, and rather strangely those two leaders have opposite fortunes at the moment.

Badgers have been blamed for being involved in the spread of tuberculosis, so killing some of the animals has been allowed; against that the numbers of hedgehogs have decreased drastically, and environmentalists are now looking for ways to stop this decline in the population of a creature so well known that it was christened Mrs Tiggy-Winkle in Beatrix Potter's children's books.

Fifty or more years ago hedgehogs were not hard to find; any short walk in the country would afford a glimpse of one, with a good view of those sharp needle-like spines. They were, of course, the first line of defence; at the first hint of any danger it would literally roll itself into a ball with those spikes pointing in all directions so that it needed a brave

(or hungry and foolish!) fox or badger to risk trying to uncurl the body to attack the animal from underneath (it sounds bloodthirsty, but how would you go about it?). If any inquisitive human should be man enough to try it without some protection, like a pair of stout gloves, he or she would quickly find out just how sharp those spines are. The best thing would be to gently coax it back into any convenient hedge.

Nowadays though the picture is much gloomier for several reasons, including careless methods of pest control in both fields and gardens, blocking of well-used tracks as housing estates spread, and the fact that rolling up in the middle of a main road is no defence whatsoever against motor vehicles. The end result: fewer hedgehogs. So we were pleased when a night-time camera showed a hedgehog ambling through; we had moved from a rural farm (which had very few anyway), hoping that the new address would be more attractive, but it took more than a year to get that sighting – and it hasn't been back yet!



Sacrewell

WILD at Sacrewell

Month long exhibition presented by Blue Tokay, celebrating the natural history of the British Isles throughout September

Exhibition included in general Sacrewell admission, along with access to our outside play areas, Playbarn and animals!

blue tokay
displaying natural history



@Sacrewell @Sacrewell
www.sacrewell.org.uk

Brand new science facilities unveiled at Prince William School in Oundle

Pupils at Prince William School in Oundle can now enjoy science lessons using 21st-century learning facilities, following the opening of the school's new science block.

Work started on the construction of the new building in early 2017 and has been completed ready for the new school year.

The two-storey science block boasts 14 well-equipped laboratories to ensure pupils can benefit from the very best teaching environment.

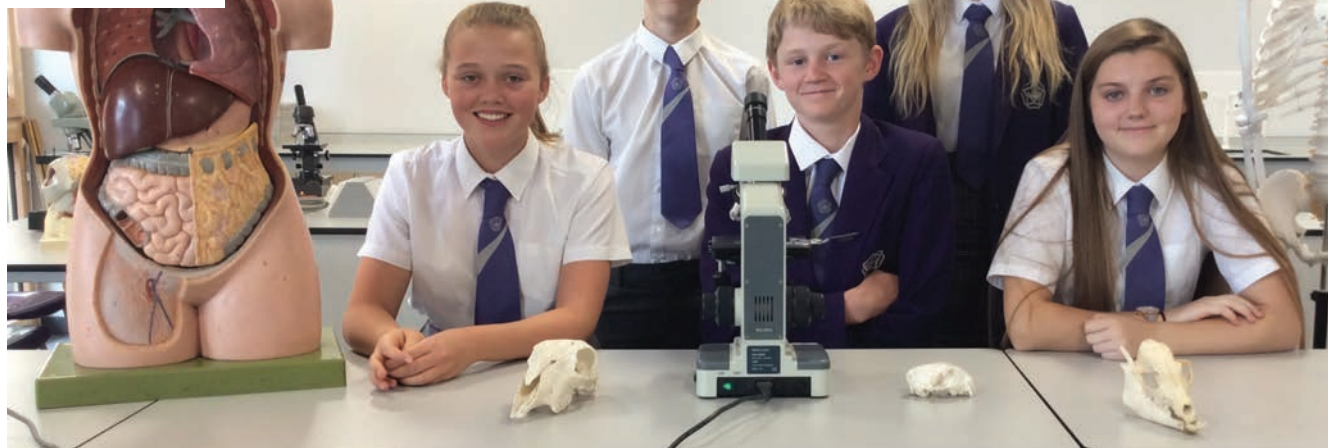
The project is part of an extensive programme of refurbishment works at Prince William School, which is sponsored by the EMLC Academy Trust. The works will include investment in new buildings and redevelopment of existing teaching blocks.

Principal Elizabeth Dormor said: "This is

a very exciting time for Prince William School, our staff, and our students as we carry out a significant refurbishment programme, starting with the opening of the new science block.

"The new teaching spaces feature impressive laboratory facilities and equipment to help our students reach their full potential in the science subjects. I can't wait to see the staff and pupils enjoying the new science block from September."

To mark the completion of the new science block, the school held a special science day for pupils on 16th July, including a visit from interactive science truck Titan II,



which showcases the latest technology and engineering including robotics and virtual reality.

The next phase of development at the school will be the conversion of the former science block into a specialist maths building.

Young business brains take on the Dragons

East Northamptonshire's finest young business brains put their skills to the test at the final of the 12th Business Dragons event, hosted by East Northamptonshire Council (ENC).

The competition held in July and organised by The East Northamptonshire College saw teams of entrepreneurs from four local schools (Rushden Academy, The Ferrers School, Huxlow Science College and Manor School) pitch their ideas and business plans to a panel of local Business Dragons.

The 'Dragons' included Peter Waddup (Director of The Leprosy Mission), Lorna Wiltshire (Personal and Interior Stylist), Mark Carrington (Director of King Vehicle Engineering Limited) and Nikki Roberts (Manager of The Pavilion Youth Club).

The final, which was held at ENC on 13th July, gave the students the opportunity to present their original business ideas to the panel, having considered the design of the product, finance, staffing, manufacture, competition and profitability.

The Dragons then tested the knowledge and professionalism of each team with rigorous questioning about the benefit and effectiveness of their ideas.

The Winning Team Trophy, supplied by East Northamptonshire Council and presented by Cllr Helen Howell, Vice Chairman of ENC, went to Revise Easy Box from Manor School.

Their idea was to produce a simplistic product of revision material which

meets the different techniques suited to how people revise. It's aimed at being an ideal solution for not only students but anyone that has to revise for an exam. The Dragons agreed that the product was an excellent idea that could be mass produced and was presented in a very confident and entertaining manner.

The Best Presentation Trophy, supplied by Manor School, Huxlow Science College and Rushden Academy, was awarded to Cosy Toes from Manor School, for their idea for heated socks, for those that do outdoor activities in the cold weather. The Dragons felt that this presentation was the most detailed, thorough and struggled to think of questions to ask as the presentation covered everything.

Flavoured, from Huxlow Science College, won the Most Commercially Viable Product Trophy, supplied by King Vehicle Engineering Limited. Their idea was for a bottle that has a section for concentrated juice to be stored which can be released in small quantities throughout the day. This would help reduce the need to keep buying bottles of flavoured water and hence reduce plastic waste, which the Dragons felt was incredibly important in helping to protect the environment.

Vice Chairman of East Northamptonshire Council, Helen Howell, said: "Once again the standard of the entries was fantastic and it's great to see such young minds thinking of ideas that could truly revolutionise the way we live. Well done to everyone who took part."



With Home Instead Senior Care, caring for an ageing loved one doesn't have to be a struggle. It's why we offer everything from individualized help around the house to advanced Alzheimer's care - to keep them safe and sound at home, instead of anywhere else.

Tailor made to your individual requirements

- Award winning care
- Companionship services
- Home help services
- Personal care services
- Highly trained CAREGivers



Recruiting Now!

Do you have a warm heart and caring nature? Then you sound perfect for us. We are always recruiting for CAREGivers to work with our lovely clients.

- Excellent training
- Great rates of pay
- Previous experience not necessary

www.homeinstead.co.uk/eastnorthants
01933 678775

Home Instead Senior Care, 3 Regent Park, Booth Drive
Wellingborough, Northants NN8 6GR



/HISCEastNorthants/



HomeinsteadEN

Home Instead
SENIOR CARE
To us, it's personal.

Each Home Instead Senior Care® franchise office is independently owned and operated. Copyright © Home Instead 2017.

Wednesday 15th August
Whitefriars Church – Teddy Bears’ Picnic
Spencer Park, Rushden
10.30am–12.30pm
Emma Croxon 07957 080074
Open to all families and children.

Thursday 16th August
Higham Ferrers Footpath Group
Saffron Road car park Higham Ferrers for car sharing
6.20pm
Free admission
01933 387991
Three-mile walk from Wollaston School.

Tiddlers Group for 0 to 3 year olds
Thrapston Baptist Church
NO Tiddlers this week – Summer break.

Friday 17th August
Fusion for 7 to 11 year olds
Thrapston Baptist Church
NO Fusion this week – Summer break.

Sunday 19th August
Morning Service
Thrapston Baptist Church
10.30am
Preacher: Graham Timson.

Fun Dog Show at Blisworth Canal Festival
More info email nannfunshow@yahoo.co.uk or phone 07921215049

Whitefriars Church – Morning Worship led by the young people
Whitefriars Primary School,
Boughton Drive, Rushden NN10 9HX
10.15am
Chris Youngman 01933 551769
An informal church service open to all.

Higham Ferrers Footpath Group
Saffron Road car park Higham Ferrers for car sharing
9.45am
Free
01933 311538
7.5-mile walk from Yeldon.

Wednesday 22nd August
Whitefriars Church – Sports Day
Meet at Bridge Community Office at Whitefriars Primary School,
Boughton Drive, Rushden NN10 9HX
10.30am–12.30pm
Emma Croxon 07957 080074
Open to all families and children.

Thursday 23 August
Tiddlers Group for 0 to 3 year olds
Thrapston Baptist Church
NO Tiddlers this week – Summer break.

Friday 24th August
Fusion for 7 to 11 year olds
Thrapston Baptist Church
NO Fusion this week – Summer break.

Sunday 26th August
Joint Morning Service with St James's
St. James's Church, Thrapston
10.30am
Preacher: Nolan Robson

By Appointment
Counselling & Listening Service
No 1 St Osyth's Lane, Oundle, Northants PE8 4BG
Free service, Marilyn 07936 015965

Housing, Benefits and Employment Advice
No 1 St Osyth's Lane, Oundle, Northants PE8 4BG
01832 770010/
office@oundlebaptist.org.uk

Half-Term
All-age Touch Typing Club
Mon-Fri, 9.30am-10.30am, learn or refresh skills, £15 course intro with coffee. Diane Gifford 07432 123438

Every Monday
Stanwick Handbell Ringers Group
The Stanwick Village Hall
7pm-9pm, 01933 623855, check out our website for more details. Everyone welcome, come and have a go.

Tai Chi
Stanwick Village Hall
7pm-8pm, £6, Robert 07771 333 369
Learn Tai Chi the ancient Chinese martial and health art for all adults.

Baggypants Yoga Class
Masonic Hall, Wellingborough Road, Rushden
8.30am-9.30am, £5 per class, 07873 743256/carole.wyatt@virginmedia.com

Islip Ladies Choir
Thrapston Church Hall
2pm-3.30pm, Barbara 01536 394431

Yoga Classes
Denford Village Hall
9am-10am, £4 per session
Anita Hackney 01832 733274

Titchmarsh Folk Dance Club
The Club Room, High Street, Titchmarsh NN14 3DF
8pm-10pm, £1 inc tea/coffee, Kev Prigmore 01536 514023/
titchmarshfdc@gmail.com

Oundle Ladies Running Group
Oundle pool car park
6.45pm, Jane Walker 01832 272898/
janewalkercakes@icloud.com

Baggypants Yoga
Masonic Hall,
Wellingborough Road, Rushden
10am-11am, £5 per session, 01933 382837/07873 743256/
carole.wyatt@virginmedia.com

Spanish Tuition
The Old Town Hall,
Market Place, Oundle
9am-8pm, £25 per class, 01832 776336/info@antlerlanguages.co.uk

Every Monday from 4th June
Gentle Dru Yoga (for 6 weeks)
Stanwick Lakes Visitor Centre
10.15am-11.30am, £45 for 6 weeks (inc parking) Diane.eardley.me.com/ 07921 855097. Suitable for all ages/abilities. Great for physical, mental and emotional health and wellbeing.

Every Monday (term time)
Praise and Play
St James’ Church Thrapston
1.30-2.45pm, refreshments available
Anita 735443

Aqua Aerobic Classes
Oundle School Swimming Pool, Milton Road, Oundle
8.45-9.30am, £25 for 5 sessions
01832 277208/277195

Every Monday, Friday & Saturday (term time)
Otters Swim School Lessons
Oundle School Swimming Pool, Milton Road, Oundle
Mon 3.55pm-6.10pm, Fri 3.55pm-6.10pm, Sat 8.30am-12noon, block booked in advance (£5.50 per lesson) 01832 277208/277195

1st Monday of the month
Oundle Wives Group
Methodist Church Hall, Oundle
7.45pm, £3 including refreshments and raffle. 01832 272178

Oundle Wives
Methodist Church, Oundle
7.45pm, £3 refreshments/raffle
01832 272178

Oundle & District Royal British Legion Meeting
The Talbot Hotel, Oundle
7pm, Les Starks 01832 270073

Finedon Irthlingborough & District Branch Royal British Legion Branch Meeting
Finedon Bowls Club
7.30pm, Peter Eames 07434 328237

1st & 3rd Monday of the month
Oundle Rotary
The Ship Inn, West Street, Oundle PE8 4EF
6.15pm, Jane Grant 07712 933574.
Bring your skills, experience,

enthusiasm, give something back to your community.

Every 2nd Monday
Thrapston & District Royal British Legion Branch Meeting
Thrapston Town Council Centre, 77 High Street, Thrapston
7.30pm, 07876 716 478, ibyrnes@britishlegion.org.uk

50+ Adventure Club
For further information
01536 505548/www.fiftyplusnorthantsadventureclub.org.uk

Royal British Legion Rushden Branch Monthly Meeting
Rushden Football & Social Club, Hayden Road, Rushden
7.15pm, annual fee £17
Jake Baker 07525 441267

3rd Monday of the month
Higham Ladies Group
Adult School, Westfield Terrace Higham Ferrers NN10 8BB
2pm-4pm, 01933 387073
Make some new friends and have fun. Interesting speakers. Supported by East Northamptonshire Council.

3rd Monday of the month (not Dec)
Oundle Munch Club
Oundle Primary School
Come for a roast lunch and pudding £4, call 01832 275353 to book.

2nd & 4th Monday of the month
StitChat
No 1 St Osyth’s Lane, Oundle
1.30pm-3.30pm, 01832 770010/
office@oundlebaptist.org.uk

Monday once a month
Woodturning Club
Hardwick Village, nr Wellingborough NN9 5AL
7-10pm, Paul Lawman 01933 674260

Every Monday, Tuesday & Thursday
Yoga for Health and Energy with Jenni Levine
Wollaston Road, Irchester NN29 7DA
6.45pm (Mon), 9.45am (Tue), 6.45pm (Thu), £6, jenni.levine@hotmail.co.uk or 0750865643851

Every Monday & Thursday
Oundle Bridge Club
Fletton House, Fletton Way, Oundle PE8 4JA
7pm start, 01832 273044

Every Tuesday
Pensioners Club
Rushden Hall
2pm-4pm, Secretary David Robinson 01933 313729/07391 562772. Speakers, bingo and whist, annual Christmas dinner. Also coach outings. All welcome.

Phoenix Gaming Club (Age 12+)
The Rushden Scouts Hall, Brooke Close behind Orbit Tyres (Skinners Lane, Rushden NN10 OXH)
7pm-11pm, membership £5pa, Aron 07739 563657/
aron.phoenix@virginmedia.com

Art Classes (10 weeks)
Knuston Hall, Knuston
7pm-9pm, 10 lessons £100, Jamie 07899 676769

East Northants Classic Motorcycle Club
New Inn Public House, Wymington
Meet around 7.30pm

Sling Walk
11am, first Tuesday of the month there is Sling Library at 10am prior to the walk. Second Tuesday meet at Rushden CC Hayway instead of Higham Ferrers. 01933 410112

Rushden Mission Training Band
Mission Church, Wellingborough Road, Rushden
7.30pm-8.45pm, Alan Richardson 01933 355302

Short Mat Bowls
Saxon Hall, Raunds
1.45pm-4pm, £3, 01933 624545



Yoga Class
Whitefriars Infant School, Boughton Drive, Rushden
7.15pm-8.15pm, £5 per session, Carole 07873 743256/
carole.wyatt@virginmedia.com

Ringstead’s Jolly Good Company
Ringstead Shared Church
10am-11am, £4
Music & Movement for over-55s.

Slimming World
Oundle Rugby Club, Occupation Rd
5.30pm and 7.30pm, Nikki 07725 617085. Weekly fee applies. Have fun, make friends and lose weight.

Squidgelets Baby & Toddler Group
Islip Pavilion, Toll Bar Road, Islip
9am-11am, £2 per child, 50p each additional child. Find us on facebook “Squidgelets” or call 07392 756391
Squidgelets is a stay and play session for under 5’s and their parent/carers.

Every Tuesday (term time)
Toddlers’ Drop In
No 1 St Osyth’s Lane, Oundle
9.15am-11.30am, free, 01832 770010/office@oundlebaptist.org.uk

1st Tuesday of every month
Great Companions (singles 55+)
Rushden Bowls Club, Northampton Road
7-9pm, yearly membership £6
Pat Bazeley 07931 964360

2nd Tuesday of the month
Woodford WI Meeting
Woodford Sports and Social Club
7.30pm, Lynn Sortwell 01832 732740

Higham Ferrers Guided Tour
Groups of 6 minimum. Trained guides. Tea & cakes, optional.
01933 411191

Nene Valley Ladies
The Full Gospel Church, Rushden
7.30pm, 01933 355478.
Speakers, entertainment and outings.

3rd Tuesday of the month
Rushden and District Stamp Club
Park Road Baptist Church Hall, Rushden NN10 0RG
7.30pm, Malcolm Whitehead 01933 350646.

Every Tuesday & Thursday
Health Walks Stanwick Lakes
10am-11am, free, car park

charges
01933 625522/
www.stanwicklakes.org.uk

Ladies Crochet Group
Irthlingborough
2pm-4pm, £10 per session
Contact Ros 07722593637

Every Tuesday, Thursday & Friday
Partner Whist Drive
Rowlett Close, Higham Ferrers (Tuesday & Friday), Windmill Club, Rushden (Thursday). 7.30pm, £2, 01933 313714

Every Tuesday & Saturday
Coffee Mornings
St James Church, Thrapston
10am-12noon, 01832 730019

Last Tuesday of the month
Tea with Friends
St Mary’s Church, Ringstead
2pm-4pm, catch up with old friends and to make new ones. Donations to church funds and charities.

Every Wednesday
Tai Chi
Chelveston Village Hall
2pm-3pm, £5, Robert 07771 333369
Learn Tai Chi the ancient Chinese martial and health art for all adults.

New Yoga Class
Masonic Hall
11.20am-12.20pm, £5 a class, 07873743256 or carole.wyatt@virginmedia.com for starting date.

Yoga Classes
Masonic Hall, Rushden
1pm-2.30pm, Daisy 01536 724113/
www.awakenwithyoga.co.uk

Ladies Archery – Pemberton Maid Marions
Pemberton Centre, Rushden NN10 9YP
Diane 01933 314032/
Nicki 01933 395913

Dog Training, Socialisation and Ringcraft
Halefield, Woodnewton, nr Oundle
Classes from 6.45pm, 01832 293432/oundledogs@aol.com/
www.oundledogs.co.uk

Rainbow Cafe for Tots
Stanwick Lakes

10.30am-12noon and 1.30pm (term time only), £2.50 per child – car park charges apply. 01933 625522/www.stanwicklakes.org.uk

Club Night Apethorpe Tennis Club
From 6pm

Returners to Work
No.1 St. Osyth’s Lane
10am-12noon, 01832 770011

Art & Craft Class
Oundle Rural Mind, 1 Herne Park, East Road, Oundle PE8 4BZ
Irene Issitt 01832 275020

Inflatable Fun Session
Oundle School Swimming Pool, Milton Road Oundle
5pm-6pm (May vary during school holidays), £3 adult & £2.25 child
01832 277208/277195

Cambridge First Certificate in English
The Old Town Hall, Market Place, Oundle
9.30am-12.30pm, £25pw, 01832 776336/info@antlerlanguages.co.uk

French Tuition
The Old Town Hall
From 6pm, £25 per week, 01832 776336/info@antlerlanguages.co.uk

Jelly Babes Toddler Group
Rushden Independent Wesleyan Church
9.15am

Playheroes Mixed Heroes 0-4 years
Highgate Hall, Elton
9.30am-10.30am, £6 one off session £16 for 3 sessions £29 for 6 sessions (full-term). playheroesinfo@gmail.com /07380204029. Weekly themed, learn through play, run by 2 teachers.

Equanimity Yoga Classes
Oundle Rugby Club
5.45pm & 7pm, vicky@eqyoga.co.uk/ 07921238701. Hatha Yoga Classes, suitable for all, equipment provided.

Every Wednesday (term time)
Community ICT Classes
Needham Building, Oundle School SciTec, Glapthorn Road, Oundle
2.30pm-4pm, 01832 277267 to enrol.

Tiny Tots

Oundle C of E Primary School,
Glaphthorn Road
1.45pm

660 Club (Age 60+)

Two Acre Club, off Milton Road
2.15pm-3.45pm. Afternoon tea
and entertainment by Oundle
pupils.

**Allegra Singers –
Three-part Ladies Choir**

Music room, Sports Pavilion, Islip
7.30-9.30pm, £3 per session,
Veronica 01832 732611/07753
472225

**Every alternate Wednesday
Psychic & Spiritual Awareness
Development Group**

Rushden
1pm-3pm or 7.30pm-9.30pm, £7
per session, Renalta Hall 07712
740495

**1st Wednesday of the month
Raunds Coffee Afternoon**

Saxon Hall, Raunds
1.30pm-3pm, £1 entry (includes
refreshments). Call 01933 622087
to reserve your seat. Meet new
friends over a cuppa &
entertainment.

Raunds Ladies Group

The Saxon Hall, Raunds
8pm-10pm, Visitors £3.50

Weekly Wildlife Wanders

Meet at Nene Wetlands Visitor
Centre
10.30am, £3 per person, katie.
king@wildlifebcn.org/01933
779587. Informal 90-minute
guided walk. (Call Visitor Centre
to confirm walk is taking place.)

**Home Instead Companionship
Café**

M&S Café (Rushden Lakes)
1pm-3pm (times will change
during school holidays), Marie
01933 678775. No booking
needed.

**1st & 3rd Wednesday of the
month**

Thrapston Country Dancers
St Johns Ambulance Hall
2pm-3.30pm, G Hearnden 01933
622827/ghearnden@tiscali.co.uk

**2nd Wednesday of the month
Coffee Morning**

Raunds Methodist Church
10am-12noon, 01933 383378

**2nd & 4th Wednesday of the
month**

Northants Model Makers
Windmill Primary School,

Raunds NN9 6LA

Main meeting starts 7.30ish. First
couple free. Bob Humpage 07960
054405/modelmaker@tiscali.
co.uk

3rd Wednesday of the month**Raunds Film Afternoon**

Saxon Hall, Raunds
2pm, £1 includes refreshments.
Call 01933 622087 to reserve
your seat. We show a great film
each month, watch press for
details.

**Wellingborough Flower
Arrangement Society**

St Mary's Church Hall, Knox
Road, Wellingborough NN8 1HU
7.30pm, £5, Chairman 01933
222326/Secretary 01604 870275

Higham and Rushden U3A

Pemberton Centre, Rushden
2pm, visitors welcome (£3
charge)
www.highamandrushdenu3a.org.
uk

British Korean Veterans

The Old Grammarians Club,
Oxford Street, Wellingborough
11.45am, Mary Morby 01933
312476/ e.m.m@btinternet.com

Raunds & Dist' British Legion

Conservative Club, Raunds
8pm, 01933 625333 for more
details. You do NOT have to be
ex-services.

**4th Wednesday of the month
Rushden Pensioners Forum**

St Peters Church Hall,
Midland Road, Rushden
2pm-4pm, Mary Morby 01933
312476 or e.m.m@btinternet.com

**Wednesday & Thursday
Free Counselling**

No.1 St. Osyth's Lane Oundle
By appointment 0793 6015965

**Every Wednesday & Thursday
(July and August)****Elton Hall and Gardens open**

Elton PE8 6SH
2pm-5pm, admission £10/£7.50
Gardens only, 01832 280468/
events@eltonhall.com. Guided
tours at regular intervals during
the afternoon.

**Wednesday & Saturday
East Northants Athletics Club**

– ‘Getting Kids Into Athletics’
The Ferrers School, Higham
Ferrers
Wed 6-7pm, Sat 9-10am,
£4 per session or Wed & Sat £7
Graham Bufton 07788 698883/
grahambufton.ena@gmail.com

Wednesday & Sunday**Ferrers & Rushden Tennis Club**

Higham Ferrers Recreation
Ground, off Wharf Road
10am-12noon (Sun); 6.30pm-
8.30pm (Wed). Per club session
£2 adults/
£1 junior (10+), Steve Roberts
01933 461028/07960 846092

Every Thursday**Yoga Class**

Whitefriars Infant School,
Rushden
7pm-8pm, £5 per class, Carole
07873743256. Suitable for
beginners.

Italian Classes

Antler Languages Ltd. The Old
Town Hall, Market Place, Oundle
7.30pm-9.30pm, £25 per class,
info@antlerlanguages.co.uk
Small classes or private tuition.
Professionally qualified teacher.

**Tai Chi for Beginners &
Improvers**

All Saints Church Hall,
Midland Road, Wellingborough
10am-11am, £6,
dominicrushmore@live.co.uk.
Improve your strength and
balance. Suitable for all.

Rushden Folk Dance Club

St Mary's Church Hall, Rushden
8-10pm, first visit free, £2
thereafter
Val 01933 387327

The Silver Fox Woodturning Club

Dale End Scout Headquarters,
Croyland Road, Wellingborough
10am-1pm, £2 all members
Debbie 01604 751019

Move to Health

No 1 St Osyth's Lane, Oundle
2.15pm-3pm, 01832 770010/
office@oundlebaptist.org.uk

Thursday Drop-In

No 1 St Osyth's Lane, Oundle
10am-2pm, 01832 770010/
office@oundlebaptist.org.uk

**Little Ducklings Pre-School
Stay & Play 'Tea & Tots'
Sessions**

1.30pm-3pm, £1.50 per family.
01832 358085

Olde and Sequence Dancing

Woodford Sports and Social Club
7.30pm-9.30pm, £2, Dorothy
01832 732534 or Keith 01832
731896

Equanimity Yoga Classes

Thrapston Plaza
6.10pm & 7.15pm, 07921238701/

vicky@eqyoga.co.uk. Hatha Yoga,
suitable for all, equipment provided.

Every Thursday (term time)**Music Makers**

Titchmarsh Pavilion
9.30am-10.15am, Joan Strong
Centre, Oundle, 11.15am-12noon,
Stanwick Village Hall, 2pm-
2.45pm, £4 per child, £2 for
siblings, Naomi Cooper on
musicmakersnorthants@gmail.
com

Little Treasures Tots Group

St Laurence's Church, Stanwick
9.30am-11am, donations to cover
costs, Nicki 01933 625658

Community Art Classes

Oundle School Art Department
7.30pm-8.30pm, free classes for
people with a disability.

**Coffee/tea and biscuits
in the Bede House**

St Mary's Church, Higham Ferrers
10am-12noon, no charge just a
donation to cover costs.

Adult & Child Swim Sessions

Oundle School Swimming Pool,
Milton Road Oundle
9.15am-9.45am, booked in
advance
as a block (£4.75 per lesson)
01832 277208/277195

Alternate Thursdays**Fettledine Afternoon Club**

Crow Hill Community CTR,
Fettledine Road, Irthlingborough
NN9 5XF
2pm-4pm, £2 all ages welcome
for tea, cake, chat and activities.
Caroline Cross 07527530529

1st Thursday of the month**Royal British Legion Friends &
Companionship Support Group**

Athletics Club, Newton Rd,
Rushden
10am-12noon. Pop in for a chat.

3rd Thursday of the month**Painting Class with Nick**

Baldwin
Chelveston Village Hall
10am-4pm, £17 per session
Janet Lowe 01933 389647

Ise & Nene Valley Turners

Cranford Village Hall, Grafton
Road, Cranford NN14 4JE
7pm, members free, visitors £5,
Peter Bond 01933 741835/
peterjbond@btinternet.com

**1st and 3rd Thursday of the
month****The Fettledine Afternoon Club**

Crow Hill Community Centre,
Irthlingborough
2pm-4pm, £2, Caroline Cross
07527530529. Activities,
speakers, meals out and more.

Thursday Market Day**No.1 Cafe - Free Drop-In**

No.1 St. Osyth's Lane
10am-2pm, 01832 770011

Every Friday**Over 60s Club Bingo**

Working Men's Club, Higham
Ferrers
2-4pm, 01933 741286

Walk and Chat

Rushden Hall Park, under flagpole
10am, Joe Bailey 01832 742195/
jebailey@east-northamptonshire.
gov.uk

Music Makers

Nene Centre, Thrapston
12.45-1.30pm & 1.45-2.30pm,
£4 per child, £2 for siblings,
Naomi Cooper 07815 293893/
musicmakersnorthants@gmail.com

French Beginners

The Old Town Hall,
Market Place, Oundle
6pm-7.30pm, £25 per class,
01832 776336/info@
antlerlanguages.co.uk

Every Friday (term time)**Over 60s FREE swim**

Oundle School Swimming Pool,

Milton Road, Oundle
3pm-3.45pm, 01832
277208/277195

Pre-School Swimming Lessons

Oundle School Swimming Pool,
Milton Road, Oundle
1.55-2.25pm & 2.30-3pm, block
book in advance (£6.75 per
lesson),
01832 277208/277195

Friday Once a Month**Wildlife Trust Little Bugs Club**

Nene Wetlands Visitor Centre,
Rushden Lakes
10-11.30am, £3 per child (intro
rate), booking essential, 01933
779587/
viktorija.marta@wildlifebcn.org

1st Friday of the month**(Check before travelling)****Craft Cafe**

Stanwick Lakes
10.30am-1pm, modest charge for
some materials, car park charges
01933 625522/
www.stanwicklakes.org.uk

Oundle Evergreen Club

2.30pm in the Victoria Hall for tea
and cakes plus entertainment.
01832 273826/272340

3rd Friday of the month**Raunds Tea Dance**

Saxon Hall, Raunds
2pm-4.15pm, £3 (50p for raffle)
Mrs Wicks 01933 312623

U3A Meeting

The Plaza, Cosy Nook,
Thrapston NN14 4PS
10am-12noon, £2 (visitors), free
for members, includes
refreshments. Guest Speakers
each month.

Former Carers Group

No 1 St Osyth's Lane, Oundle
PE8 4BG
2pm-3.30pm, free, 01832 770010/
office@oundlebaptist.org.uk

3rd Friday of the month**(Check before travelling)****Stanwick Stitchers**

Stanwick Lakes
10.30am, free, car park charges.
01933 625522 or Pauline on
01933 229817/www.
stanwicklakes.org.uk

Every Saturday**Slimming World**

Oundle Golf Club, Benefield Road
8.30am, Nikki on 07725 617085.
Weekly fee applies. Have fun,
make friends and lose weight.

**Last Saturday of the Month (not
Dec)****Farmers' Market**

Market Square, Higham Ferrers
9am-1pm
Danielle@highamferrers-tc.gov.uk

1st Saturday of the month**Coffee Morning**

St Mary's Church, Ringstead
10am-12noon, 01933 624262

Thrapston Farmers' Market

Thrapston High Street
9am-1pm, www.thrapstonfarmers
market.moonfruit.com

2nd Saturday of the month**Coffee 'n' Cakes**

Oundle Methodist Church,
Drummingwell Lane
10am-12noon, John Hewitson
01832 272209

WE Watch

Stanwick Lakes
01933 625522/
wewatchstanwick@hotmail.co.uk

Oundle Farmers' Market

Market Place, Oundle
8am-1.30pm, Oundle Town
Council
01832 272055

3rd Saturday of the month**Phoenix Group**

Stanwick Lakes
01933 625522/
wewatchstanwick@hotmail.co.uk

Messy Church

Rushden Salvation Army,
Church Street, Rushden
4pm, George Ellitson 01933
313106

Every Saturday & Sunday**Coffee & cakes/Sunday worship**

Rushden Independent Wesleyan
Church (Entrance Queen Street)
Saturday coffee & cakes.
10am-11.30am, Sunday worship
10.45am with children's activities
2nd Sunday
in the month 4pm.

Every Sunday**Short & Sweet**

St Mary's Church Rushden
2-3pm, Sue Merrifield 01933
358218. Worship for people with
additional needs followed by tea,
cake & crafts.

2 Course Sunday Lunch

Rushden Bowls Club
12noon, £10 per head.
07850 864537 to book.

Sunday Tea

Fotheringhay Village Hall
3pm-5.30pm, £2.50 for tea &
cake.
Alexandra Mitchell 01832 226440

Morning Worship

Rushden Mission Church,
Wellingborough Road
10.45am, Alan 01933 355302

Morning Church Service

Rushden Heritage Chapel Hall,
Park Road, Rushden NN10 ORG
10.30am

Church Service

The Heritage Chapel and Halls,
Park Road, Rushden NN10 ORW
10.30am, Cheryl 07969 603958/
cheze49@gmail.com

Ringstead Shared Church

Service for all (Communion first
Sunday each month), 10.30am
Mike Freeman 01933 389796/
rbc-rsc@angeladavis.net

1st Sunday of the month**Priceless – for young children
and their families**

St Laurence's Church, Stanwick
9.30am-10.15am

Every 2nd, 4th & 5th Sunday**Pete's Pack (For children 3+)**

St Peter's Church, Newton
Bromswold
Bible based activities, 10am-11am
Helen Lines 07917 001924

3rd Sunday of the month**All Age Worship**

St Laurence's Church, Stanwick
9.30am

Leisurely, Sociable Strolls

Pub start – if not lunching do not
use pub car park. 10am for
10.30am start. Guests £2 or join
for year £8.secretary@
northamptonshire shamblers.org.
uk

4th Sunday of the month and**Bank Holidays (not Nov-Jan)****King's Cliffe Heritage Centre**

Bridge Street. (Hanging sign
when we're open). Open
2pm-5pm

**Every Sunday during July,
August and September****Sunday Teas**

Fotheringhay Village Hall
3pm-5.30pm, Tea and cake £2.50
Music in Church on some
Sundays. 01832 226440/www.
fotheringhay.villagehall.co.uk

Ongoing**Drawing & Painting Classes**

Ecton Village Hall, Chelveston
Village Hall, Warkton Village Hall
& Kingsthorpe Community Centre
£65 per term. Derek Geater 01933
381848/dgartweb.sharepoint.com

German Tutorials

Oundle area. Gudrun 07710
189906/
gudvolk@gmail.com



To submit your
event please contact
us via our website in the
following format: Date, event,
place, time, admission
fee (if applicable), contact
information, 15 word
description.

NFRS becomes first fire service in country to support GoodSAM app

A smartphone system which alerts the nearest off-duty first aid trained responders when someone has a cardiac arrest is now being supported by Northamptonshire firefighters.

Northamptonshire Fire and Rescue Service (NFRS) is the first fire service in the country to have signed up in support of the GoodSAM app.

The app triggers alerts to the three closest first aid trained responders when a 999 call is received for an ambulance, in order to deliver quality CPR until the emergency services arrive.

When a 999 call comes through to East Midlands Ambulance Service (EMAS), if the symptoms of the patient are likely to indicate a cardiac arrest, the GoodSAM platform

is automatically notified. The app uses the location of the patient to identify the nearest responders and asks them to assist. An ambulance is still deployed in the usual way.

These off duty, volunteer responders are signed up because they know how to deliver quality CPR as part of their usual work. They typically include doctors, police, nurses and firefighters.

On scene in seconds

Professor Mark Wilson, neurosurgeon and co-founder of GoodSAM said: "If a patient has a

cardiac arrest, it is the first few minutes after the incident that determine the outcome – life, death, or long-term brain injury. In this time frame, we could never employ enough paramedics to be on scene in seconds – hence we need to alert people with the skills in the surrounding few hundred metres.

"GoodSAM can revolutionise our ability to get to the patient immediately and improve outcomes. Harnessing the community for the benefit of the community, this is an entirely voluntary system. GoodSAM

responders can either accept or reject the request, depending on whether they are available at the time. If the request is rejected it will be passed on to the next nearest responder until the ambulance arrives."

The GoodSAM app has been running for three years and EMAS issued 13,000 alerts last year. A GoodSAM responder arrived on scene in 56 per cent of cases (7,280). Of these, 1,500 were cardiac arrests for which CPR could be performed.

Lifesaving expertise

NFRS Group Commander Mick Conlon said: "GoodSAM works by deploying people who are not at work but nevertheless carry around the lifesaving



expertise that could really help someone who has a cardiac arrest.

"How many times have people suffered cardiac arrests and had to wait for CPR to be administered after the arrival of an ambulance crew, when someone in the

next street away may have been qualified to help them?"

"We are busy signing up NFRS responder volunteers to the app as so many firefighters are keen to use their professional medical skills to help save lives, whether on or off duty."

The West End Musicals in Concert

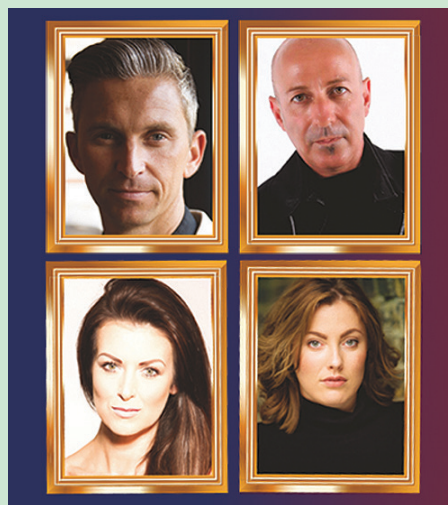
Sunday 30th September, 2.30pm & 6.30pm

Bringing the West End to Wellingborough, The West End Musicals in Concert is truly a must-see for all fans of the musicals! Featuring classic hits from much-loved shows, enjoy an afternoon or evening of special live entertainment at Castle Theatre in Wellingborough this September.

The concert features extracts from Fiddler On the Roof, Evita, The Lion King, Mary Poppins, Oklahoma!, Calamity Jane, Guys and Dolls, The Sound of Music and Les Misérables to name but a few.

Exquisitely performed by a stunning cast, their sheer vocal skills and superb performances bring the characters they are portraying to life with breathtaking effect, making this show so unique.

Sure to leave the audience 'cheering for more', don't miss out on this most magical of shows, starring the award-winning Steve Shappelle, Lisa Kelsey, Jason Lee and Shani Cantor.



Tickets for this celebration of West End musicals are priced at £16 (£13) and can be purchased by calling the Box Office on 01933 270 007 or online at www.castletheatre.co.uk.

Long-term future of outdoor learning centre secured

Children will continue to get a taste for adventure at Longtown Outdoor Learning Centre after an agreement for it to be sold to The Wilson Foundation has secured its future.

Northamptonshire County Council has agreed the sale of Longtown to The Wilson Foundation, who will continue to offer outdoor education opportunities for young people.

The sale of Longtown ensures the continued employment of staff, and is intended to achieve best value for the council and secure the long-term future of the service.

The Wilson Foundation is a charitable youth development organisation for Northamptonshire based in the county. It has invested in Longtown for many years.

The newly established Longtown Outdoor

Learning Trust (LOLT) will continue to operate Longtown as an outdoor education centre and will honour all existing bookings.

As part of the purchase, The Wilson Foundation has committed to invest in significantly improving facilities and making it "a nationally renowned centre of excellence for outdoor education".

Northamptonshire County Council cabinet member for children, families and education, Cllr Victoria Perry said: "It's great to see that these fantastic outdoor activities that Northamptonshire children have enjoyed over decades will continue.

"The memorable experiences which children receive at Longtown not only have an immediate impact on shaping their confidence and life-skills but, by introducing them to

outdoor activities, can go on to have a positive impact on their health and mental wellbeing throughout their lives."

Longtown Outdoor Learning Centre is a 70 bed residential centre for young people in the picturesque surroundings of Brecon Beacons National Park on the Welsh border of Herefordshire.

The facility has two main buildings: The Courthouse, a Grade II listed building and the Monnow Wing, an accommodation block with disabled access together with training rooms, stores and a workshop. The 16-acre site also has a range of activity equipment including a canoe training pool, climbing tower, rope courses and woodland.

The sale is due for completion on 1st September 2018.

Perfect Balance Pilates

'the art of exercise'

Monday

Personal Training 10.30 - 11.30am
Finedon 6.30 - 7.30pm starts 15th Oct
Islip 8 - 9pm starts 17th Sept

Tuesday

Rushden 11.00 - 12noon starts 2nd Oct
Rushden 6.45 - 7.45pm starts 2nd Oct

Wednesday

Yelden 6 - 7pm starts 17th Oct

Thursday

Oundle 9.30 - 10.30am starts 6th Sept
Rushden 11 - 12noon starts 6th Sept
Rushden 6.15 - 7.15pm starts 6th Sept
Rushden 7.30 - 8.30pm starts 6th Sept

Friday

Personal Training 10.30 - 11.30am

07833 373622

info@perfectbalancepilates.com

www.perfectbalancepilates.com

thepilatesprinciple
pilatesbreath

Nene Valley news Classifieds



ACCOUNTANCY

Jon Essam & Co Ltd

Chartered Accountants

- Self Assessment Tax Returns
- Limited Company services
- VAT & CIS Returns
- New Business Start Ups and advice
- Payroll & Auto-enrolment services
- Sage & Xero specialists
- Free initial consultation

Tel: 01832 730280 Fax: 01832 730281
info@essamca.co.uk www.essamca.co.uk

23 Cottingham Way, Thrapston,
Kettering, Northants, NN14 4PL



CARE HOMES

Rose Cottage Residential Care Home Woodford

For the elderly and dementia

We are a small care home with eight residents only.
All rooms are single en-suite and ground floor.
We provide respite care and day care.
Telephone 01832 735417
www.rosecottagewoodford.co.uk

Follow us on Facebook

Kitchen Door Solutions

Replacement doors and kitchen refurbishment

Doors available in solid wood, painted and laminate finishes



Iain Smith

Tel: 01933 311310

Mob: 07583 869741

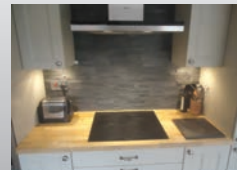
SPECIALISTS

SINCE 1980

The WOODWORKS Kitchen service

SPECIALISTS IN ALL ASPECTS OF KITCHEN REFURBISHMENT

Replacement Kitchen doors
Worktops supplied & fitted
Sinks, Taps & Appliances
Wardrobes built & fitted
Made to measure
Bathroom furniture



Update your existing kitchen to give
you stunning looks, optimised storage
space and Increased accessibility

WWW.WOODWORKS-KITCHENS.CO.UK Call now for a free no obligation quote

Family business est 1999 **01933 449239**

!!!GET PLASTERED!!!

For all your plastering needs.
No job too small, no fuss, no nonsense!
Reliable and trustworthy service
at the best possible price.
Call Steve for free, friendly
advice or a free quote.

07703 720138 • 01933 430051

Ashby's Allsorts

Home Improvement & Handyman Services

Free Estimates

No Job Too Small

Inside and Outside Work Undertaken

Public Liability Insurance

Quality Work at Competitive Prices

Tel: 01832 771020

Mobile: 07584 673767

Email: contact@ashbys-allsorts.co.uk

www.ashbys-allsorts.co.uk

Based in Thrapston, we service a radius of 30ish miles

Simon Vale

Painter & Decorator

High quality • Competitive prices

Free estimates

07568 587367 or 01933 228671

CONSERVATORIES

EG VICTORIAN 3500 BY 3500
FULLY INSTALLED INCLUDING
ALL BRICKWORK AND VAT

£7250

ALL OTHER DESIGNS AND SIZES AVAILABLE

UNBEATABLE PRICES

PHONE NICK ALLINGTON ON

(01832) 734070

WWW.CONSERVATORIESBUILT.CO.UK

ALAN TAYLOR

For your local plastering

Boarding, Covering, Rendering

All aspects of plastering. Enquiries welcome.

Call Alan for a free quotation or advice on

01933 430098 or 07977 926717

MP BUILDER

Home Improvements and Maintenance

Reliable, professional and trustworthy

Extensions • Bathrooms/Wetrooms • Plumbing
Kitchens • UPVC Windows & Doors • Carpentry
Roofing & Guttering • Painting & Decorating

Free Competitive Quotes

Tel: 01933 353508 • Mob: 07710 337071

Email: buildwithmp@gmail.com

Web: www.mpbuilder.co.uk



HOME SERVICES

Plumber — local & fast!

RGJ PLUMBING AND HEATING

Plumbing

- Full bathroom installation (inc carpentry & tiling)
- Burst pipes & leaks
- Toilet repair/replace
- Taps, sinks repair/replace
- Showers repair/replace & pumps

Heating

- Full central heating installation
- Boiler servicing/breakdowns
- Landlord safety certificates
- Power flushing
- Radiators & valves
- Pumps & cylinders



No call-out charge!
City & Guilds Qualified
All work guaranteed



01933 588005 or 07921 469471

Part P Registered A.SEATON ELECTRICAL LTD

- Rewires, fuse board replacements
- Fault finding, extra sockets & lights
- Testing, inspection & certification
- No job too small, free estimates given

Email: seatonsparky@gmail.com

T: 01933 778504 M: 07952 249885

CLEAR THE JUNK

The Rose Clearance Service

Full - Part - Single Items.

Fully Registered and Insured. Est 30 years.

www.rose-clearance-services.co.uk

Tel: 07761 248266/07443 605859

10% OFF

On presentation of
this advert.
Valid until
1/9/2018



SAFE IN OUR HANDS

YOUR LOCAL PROFESSIONAL

HEATING ENGINEERS

YOU CAN TRUST

REPAIRS • SERVICING • INSTALLATIONS

Phone today for a free quotation on

Tel: 01933 392 719

www.dcheatingengineers.co.uk

Which? Trusted trader

safe

Best Buy Which? Worcester Bosch Group Accredited Installer

10 YEAR WARRANTY

COSTUME JEWELLERY AND

ALL UNWANTED JEWELLERY

BROKEN OR PERFECT BOUGHT.

ALSO OLD WATCHES AND COINS.

ANY QUANTITY. JILL WILDING 01832 737803.

Quality Repairs To Windows & Doors

THRAPSTON GLAZING

Est 85 WINDOW & DOOR REPAIRS

FREE QUOTES

FREE GENUINE ADVICE

**QUALITY REPAIRS TO ALL MAKES
OF WINDOWS, DOORS AND
CONSERVATORIES SUPPLIED AND
FITTED BY ANY COMPANY.**

**REPLACEMENT GLASS UNITS,
NEW LOCKS, NEW HINGES, NEW
LETTERBOXES, NEW HANDLES ETC...
WITH COMPLETE FITTING SERVICE**

WE ALSO SERVICE WINDOWS, DOORS
AND PATIO DOORS ADJUSTING AND
LUBRICATING AS WE GO. BADLY
ADJUSTED DOORS ARE THE MAIN
REASON FOR LOCK FAILURE.

WE STOCK AND SOURCE THOUSANDS
OF SPARE PARTS TO SUIT ALL MAKES
OF WINDOWS AND DOORS

OTHER SERVICES INCLUDE, CUT GLASS,
TOUGHENED GLASS AND GREENHOUSE
GLASS ALL DELIVERED TO YOUR DOOR
WITH FITTING SERVICES IF REQUIRED.

ALL OUR FITTING ENGINEERS HAVE
OVER 30 YEARS EXPERIENCE
WORKING FOR US.

PLEASE CALL OR EMAIL US FOR A
FREE QUOTATION

01832 734570

www.thrapstonglazing.co.uk

[windowanddoorrepairs@talktalk.net](mailto>windowanddoorrepairs@talktalk.net)

Free Quotations • No Obligation

HOLIDAYS

J&MB Travel

Coach Holidays 2018

Date	Destination	Days	Hotel	Inc/Theme	Cost
8 Oct	Weymouth	5	Crown		255
15 Oct	St Annes	5	Chadwick	Blackpool Day Trip	275
21 Oct	Scarborough	5	Royal Hotel		270
22 Oct	Sand Bay	5	Holiday Village	It's the 1960s Again	195
26 Oct	Blackpool	3	Park House	Illuminations Weekend	165
29 Oct	Bournemouth	5	Suncliff	All Inclusive	280
5 Nov	Hayling Island	5	Mill Rythe HC	Turkey n Tinsel	225
12 Nov	Isle of Wight	5	Trouville	T&T	265
19 Nov	Bognor Regis	5	Beachcroft	T&T	275
26 Nov	Eastbourne	5	Alexandra	T&T	240
3 Dec	Torquay	5	Howden Court	T&T	260
3 Dec	Corton	5	Warners	T&T	240
23 Dec	Bournemouth	5	Carrington Hotel	Christmas	290
27 Dec	Bournemouth	4	Suncliff	Twixmas	190
30 Dec	Bournemouth	4	Suncliff	New Year	360

OUR HOLIDAYS INCLUDE:

Coach Travel From Rushden, Wellingborough & Northampton
En-suite Accommodation Rooms also have colour TV, tea/coffee tray
Meals Full English breakfast & 3 course evening dinner with tea/coffee
Local Excursions Usually 2 per 5 day holiday
Entertainment in the Hotel Usually 2 nights per 5 day holiday
Prices are Per Person when sharing a Double or Twin Room
Single Room Supplements are charged on some holidays

Call now for our brochure: 01536 202660



HOME IMPROVEMENTS

SKIMMING, ARTEX COVERING,
DRY LINING, RENDERING,
REPAIRS - CLEAN, RELIABLE
& QUALIFIED TRADESMAN



CALL TODAY FOR
A FREE ESTIMATE!

07912302891

safe 222246

PLUMBING PGR anglianwater

Plumbing & Heating
Tel: 01933 698116
24 Hr Emergency Service
Email: pgrplumbing@btinternet.com
Web: www.pgrplumbing.co.uk

Specialists in
Gas Installations
Gas Servicing & Maintenance
Landlords Gas Safety Certificates
Central Heating Powerflushing
Household Plumbing & Drainage

Easyflow Plumbing
Plumbing & Heating Services

Bathroom Installations
Heating Systems
General Household Plumbing

Tel: 07840 254 025 or 01604 946896
robertadford77@gmail.com

DONNO R G
TV/AERIAL SERVICES
Est 1981

TV/DVD repairs, servicing at your home if possible.
Full installation service available. Freesat and Freeview digital
aerials supplied and installed from £80. All work guaranteed.
No call out charge locally. Free estimates on repairs.

Tel: 01933 356680

ENSIGN GAS ENGINEERS
GAS FIRES, GAS COOKERS
INSTALLATION, SERVICE AND REPAIR
Recommended service agent for:
Focal Point Fires, Superior Fires and Eco Fires

NO CALL OUT CHARGE

Tel: 01933 318327

PLUMBER
All plumbing work undertaken - No call out charge
Toilet repairs - Dripping overflows - Leaks and bursts
Garden taps installed - Tap repairs and replacements
Radiators supplied and fitted
20 years' experience
Call Tim 01832 358248 or 07957 550660

HANDY HERBERTS
Home & Garden Maintenance

All garden and exterior maintenance work
undertaken including professional gutter
cleaning, graveling, fencing, patios fitted,
external painting and hedge trimming.

01933 563365 or 07725 225214
handyherberts@yahoo.co.uk

PUBLIC NOTICES

NORTHAMPTONSHIRE COUNTY COUNCIL
ROAD TRAFFIC REGULATION ACT 1984 - SECTION 14

THE NORTHAMPTONSHIRE COUNTY COUNCIL
(PUBLIC BRIDLEWAY FN4 (PART)
- PARISH OF WOODFORD CUM MEMBRIS)

(TEMPORARY CLOSURE) ORDER 2018

NOTICE IS HEREBY GIVEN that Northamptonshire County Council intend, not less than seven days from the date of this Notice, to make an Order the effect of which is to prohibit all pedestrians, equestrians and cyclists from proceeding along that length of Public Bridleway FN4 in the Parish of Woodford Cum Membris as specified below. Private access to land or premises adjacent to the said length of bridleway is unaffected.

RIGHT OF WAY TO WHICH RESTRICTION APPLIES: The existing route to be closed begins at National Grid Reference ('NGR') SP5402 5306. The route travels generally north east for approximately 210 metres to point B at NGR SP5405 5327. The route is shown by a solid black line between points A - B.

REASONS FOR RESTRICTION: The restriction is required due to construction works.

PERIOD OF CLOSURE: The Order will come into effect on 1st September 2018 and will continue in force for a period of six months. An application may be made for the approval of the Secretary of State for Transport for this Order to be extended if this proves necessary. However, the restriction specified will have effect only at such times and to such extent as is indicated by the display of notices.

ALTERNATIVE ROUTES: The alternative route starts at point A at NGR SP5402 5306. The route travels generally west along Byfield Road for approximately 65 metres to point C at NGR SP5396 5308. The route then travels north east along Grant Hill Way for approximately 213 metres to point B at NGR SP5405 5327. The alternative route is shown by a broken black line between points A - C - B.

Dated this 11th day of August 2018
DEBBIE CARTER-HUGHES,
Head of Property & Planning Law

PKG/ROW/321

If you require any further information please call Tommy Buggins on 01295 201050.

NORTHAMPTONSHIRE COUNTY COUNCIL
ROAD TRAFFIC REGULATION ACT 1984 - SECTION 14

THE NORTHAMPTONSHIRE COUNTY COUNCIL
(PUBLIC BRIDLEWAY UG38 (PART) - PARISH OF RAUNDS)

(TEMPORARY CLOSURE) ORDER 2018

NOTICE IS HEREBY GIVEN that the above Order made by Northamptonshire County Council on 25th January 2018 and which came into effect on 6th February 2018 has been extended until the works to which it relates have been completed or until midnight on 6th February 2019 whichever is sooner by the Secretary of State for Transport. Private access to land or premises adjacent to the said bridleway is unaffected.

REASONS FOR RESTRICTION: The restriction is required so that the bridge works may be completed.

Dated this 11th day of August 2018
DEBBIE CARTER-HUGHES,
Head of Property & Planning Law

PKG/ROW/305

To view the map for this Order please visit www.northamptonshire.gov.uk and enter "Temporary Traffic Regulations Orders" in the search box. If you require any further information please contact Ken Brown (Roxhill) on 01788 538456.

SCHEDULE
The existing route to be closed begins at point A at National Grid Reference ('NGR') SP9803 7282. The route travels generally east for 206 metres to point B at NGR SP9824 7283. The route is shown by a solid black line between points A - B.

ALTERNATIVE ROUTES: The alternative route starts at point A at NGR SP9803 7282. The route travels generally south east for 137 metres to point C at NGR SP9816 7278. The route then heads north east for 97 metres to point B at NGR SP9824 7283.

The alternative route is shown by a broken black line between points A - C - B.

NORTHAMPTONSHIRE COUNTY COUNCIL
ROAD TRAFFIC REGULATION ACT 1984

THE NORTHAMPTONSHIRE COUNTY COUNCIL
(EAST NORTHAMPTONSHIRE DISTRICT)
(WAITING AND LOADING RESTRICTIONS AND ON-STREET PARKING PLACES)
(CONSOLIDATION) ORDER 2009
(AMENDMENT No. 15) ORDER 2018

NOTICE IS HEREBY GIVEN that Northamptonshire County Council have made an Order under Sections 1, 2, 3, 4, 5, 32, 35 to 39 and Schedule 9 of the Road Traffic Regulation Act 1984 ("the Act") to amend "The Northamptonshire County Council (East Northamptonshire District) (Waiting and Loading Restrictions and On-Street Parking Places) (Consolidation) Order 2009" as specified in the Schedule below.

A COPY of the Order may be inspected at Northamptonshire Highways, One Angel Square, Angel Street, Northampton, NN1 1ED during normal office hours.

If you wish to question the validity of the Order or of any provisions contained in it on the grounds that it is not within the powers conferred by the Road Traffic Regulation Act 1984, or on the grounds that any requirement of that Act, or of any instrument made under it has not been complied with in relation to the Order, you may, within six weeks from the date of this Notice apply to the High Court for this purpose.

The Order will become effective on the 13th August 2018

Dated this 11th day of August 2018
DEBBIE CARTER-HUGHES,
Head of Property & Planning Law

PKG / 1735

SCHEDULE

NO WAITING AT ANY TIME (DOUBLE YELLOW LINES)
Midland Road, Rushden - Both sides, from the junction of Washbrook Road for 15 metres; Moor Road & Washbrook Road, Rushden - East and South side, from the junction of Washbrook Road for 10 metres, including the section of Washbrook Road between Moor Road and Midland Road; Chichele Street, Higham Ferrers - West side, extension of existing lines from the junction with Kimbolton Road to the Northern boundary of D&E Tyres; Chichele Street, Higham Ferrers - East side, extension of existing lines from the junction with Kimbolton Road to the Northern boundary of D&E Tyres; Wellington Road, Raunds - Southeast side, over the entrance and tactile crossing next to Red Bank Mews; Denford Road, High Street & Raunds Road, Ringstead - Whole junction, including a short section opposite the New Inn on Denford Road; Dolben Avenue & West Street, Stanwick - Whole junction, except for the south side of West Street; West Street, Stanwick - Both sides, extension of the existing lines up to the roundabout (A45) opposite Stanwick Lakes.

CHANGE OF EXISTING 30 MINUTE LIMITED WAITING TO 1 HOUR (NO RETURN WITHIN 30 MINUTES)
High Street, Irthlingborough - Southeast side, existing bay outside No. 49 - 55; High Street, Irthlingborough - Southeast side, existing bay outside No. 39 - 45; High Street, Irthlingborough - Southeast side, existing bay outside the Cemetery.

REMOVALS

David Mallett
REMOVALS & GENERAL HAULAGE

For a **FREE** quotation call
Mob: 07888 996 8064
Tel: 01832 731570

Local Friendly Service

Secured by Design
SBD
Official Police Security Initiative

THE GARAGE DOOR CENTRE

Improve Your Kerb appeal
Call us to discuss your options on a free upgrade to the SWS police approved roller door.

Come and visit our Unique showroom in Wellingborough, with over 126 products for you to look at, touch and try for yourself

Call Us Now on 01933 229135

6-8 Meadow Court, Ise Valley Trading Estate
Finedon Road, Wellingborough, NN8 4BH

Opening Hours: Monday to Friday 08:30 to 17:30, Saturdays from 09:00 to 16:00

Please access us from Finedon on the A510 whilst the bridge near us is being raised

