

Nene Valley

news

Your local independent community newspaper for East Northamptonshire

Telephone:
01522 513515

We want to hear from you,
so please submit your
news story or event at
www.nenevalleynews.co.uk

Inside...



Oundle Ladies through to Cecil Leitch Finals

Page 5



Education – A-level results

Page 8 & 9

Two MPs to spend the day with Northamptonshire Police

Two of Northamptonshire's MPs will spend the day with Northamptonshire Police at the end of August as part of the National Police Chiefs' Council's (NPCC) Give a Day to Policing.

Give a Day to Policing is a day during the summer parliamentary recess where MPs are invited to spend the day with their local police force in order to meet frontline officers and gain an insight into the challenges the police face on a daily basis.

Following the invitation extended to all local MPs in July, Andrew Lewer (MP for Northampton South) and Tom Pursglove (MP for Corby) both accepted and are ready to hit the frontline in their respective constituencies at the end of August.

With Andrew Lewer visiting on Wednesday 29th August and Tom

Pursglove on Thursday 30th August, both MPs will be exposed to a wide range of police activity including listening to calls in the Force Control Room, attending incidents with response officers, patrolling their neighbourhoods with neighbourhood officers and visiting their local custody suite.

Superintendent Emily Vernon, Head of Local Policing at Northamptonshire Police, said: "Give a Day to Policing is a great opportunity to demonstrate to our local MPs the breadth of work that goes on at Northamptonshire Police and the challenges our officers face on a daily basis.

"So much fantastic work happens here every single day of the week – from our call handlers who spend their day calmly dealing with people's emergencies, to our officers on the ground who are exposed to distressing situations on a daily basis, to our detectives conducting complex investigations in

order to bring offenders of crime to justice.

"I hope both MPs find their time with Northamptonshire Police useful and are able to get a better insight into the challenges we face."

Northamptonshire Police and Crime Commissioner Stephen Mold, said: "I am really pleased that our MPs

are taking the opportunity to gain some insight into policing Northamptonshire.

"Police officers and staff work incredibly hard under very difficult circumstances, whether that is on the streets of our towns and villages or behind the scenes tackling cyber-crime or child exploitation.

"I know that our MPs will gain a new insight on the county they represent and I hope that this understanding will be useful when they are back in Westminster."



Give a Day to Policing

In Brief

Irthlingborough Scouts 110th Anniversary

This is a very significant year for Scouting in Irthlingborough.

Way back in 1908 a local group of young men read Baden Powell's recently published 'Scouting for Boys' and started to meet as Scouts under a streetlight by the Cross. They joined in with the world-renowned Movement founded on Brownsea Island in summer 1907.

Among the first 50 or so Troops founded in the world, Scouting continues in strength in Irthlingborough.

With a buoyant number of boys and girls, the present Group is a local leader providing Scouting activities.

Over the weekend of 28-30th September the Group celebrates this special anniversary with an Exhibition of 110 years of photographs and memorabilia at its headquarters, the Harold Bugby Scout Centre, open to the public.

On Saturday 29th September more than 150 present and former Scouts and friends will celebrate at the Town Band Club that evening. All Old Scouts and supporters will be warmly welcomed!

BLETSOES

01832 732188
estateagents@bletsoes.co.uk

49-51 High Street, Thrapston, Northamptonshire, NN14 4JJ



Flying the nest or putting
down new roots?

Bletsoes Estate Agents are
here to help.

Northampton Male Voice Choir annual concert

Northampton Male Voice Choir (NMVC) under the direction of Musical Director, Stephen Bell, is delighted and extremely excited to announce that, at its Annual Concert on 20th October, it will be joined by the fabulous and hugely talented Junction 14, a ladies a cappella chorus from Milton Keynes – winners (with honours) in the Barbershop Chorus class at this year's Milton Keynes Festival of the Arts. NMVC and Junction 14 will be presenting an exciting selection of songs, with something for absolutely everyone – and there may even be one or two surprises!

The concert will be held at The Cripps Theatre, Northampton School for Boys, Billing Road, Northampton, NN1 5RT starting at 7.30pm. Tickets will be available from the Cripps Theatre booking office (Tel: 01604 258666) at www.ticketsource.co.uk/cripps-

hall or from NMVC Concert Secretary, David Walsh, on 01604 831455.

2018 has been an outstanding and very busy year for Northampton Male Voice Choir, in which it has raised £15,500 for Prostate Cancer UK; won the Open Choirs Class at the Northampton Eisteddfod (retaining the Challenge Cup for the 3rd year running) and embarked on a hugely successful recruitment campaign resulting in 40 plus men registering an interest in joining its ranks. With a potential membership of around 90, NMVC will be one of the largest male voice choirs in the country! And, by the end of the year, NMVC will have performed in over 20 concerts and events.

For further details about Northampton Male Voice Choir please check out the NMVC website on www.nmvc.co.uk

Information about Junction 14 may be found at <http://junction14.org>

Genealogy jottings

Picture the scene... your ancestor, Robert Austen, has moved from their sleepy Suffolk village by the sea to the throbbing metropolis in search of work. Coming from a farming background – his father and brothers were 'Ag Labs' – there was not much need to go to school as you didn't read books or write anything out in the fields. This was especially pertinent at harvest time – what's the point of school when there is work to be done! Lodging with Mrs Brown in Southwark (which was in Surrey – the other side of the river!) was fine – he just handed over his half crown a week rent for his room, knowing the value of the coins. All was well until the enumerator called. Mrs Brown was able to read and write and so managed after a fashion to complete the form left. She went round her lodgers, asking where they came from. When she arrived at Robert, his reply was "Dunwich in Suffolk". However, not being fully au fait with the broad Suffolk accent, actually heard, "Dunnijin, Suffolk". Thus, your ancestor's birthplace was recorded as such for posterity. No wonder you cannot find him!

By Jan Pearson
Genealogy Specialists, Tracing Our Past, Discovering Our Genes (TOP DOG)
www.genealogy-specialists.com

Therefore, if you have the chance and your ancestor was still alive 10 years later, it is a good idea to find him in the next census and see what his place of birth is there. As time went on, more people moved around the country and so more place names became known to those outside the area. Also, say what you see out loud. It may help you with some lateral thinking.

But also remember – less is sometimes more when searching the censuses. If you are having problems with specifics, then widen your search. Just entering the county with his name and then scanning down the results could pull up a 'soundalike'. Also, don't forget the use of 'wildcards'. Many websites allow the use of an asterisk. Robert's surname could be Austln or AustEn and so a search of Aust*n could bring forth results.

Want to place an advertisement or submit an article?

If you wish to contribute or have any comments please email news@nenevalleynews.co.uk or call 01522 513515. To advertise, call 01522 513515. Alternatively you can email advertising@nenevalleynews.co.uk

If you are not receiving your copy of Nene Valley News, please email distribution@km-media.co.uk or telephone 01522 513515.

If you would like to receive this publication as a download, Nene Valley News is available online as a pdf at www.nenevalleynews.co.uk.

You can also subscribe to Nene Valley News for £39 per annum.

Nene Valley News is produced by KM Media & Marketing, County House, 9 Checkpoint Court, Sadler Road, Lincoln, LN6 3PW.

Copy dates for Nene Valley News

Publication date: Saturday 8th September
Articles to the editor by: Wednesday 29th August

Publication date: Saturday 22nd September
Articles to the editor by: Wednesday 12th September



KM Media & Marketing
Your partner in publishing
ONLINE | IN PRINT | IN DIGITAL

Editor's notes

The results of the public consultation on central government's plans for changes to the status of Northamptonshire County Council, which ended on 22nd July, have been announced. It appears that the vast majority of people recognised a foregone conclusion when they saw one because fewer than 1% of residents bothered to comment!

There was a wide disparity of views from those who did make the effort but overall just less than two thirds were in favour of a Two Unitary Authority arrangement, albeit most were in favour of a reduction in the number of Councils.

In response to the question about what was most important to them in a new Council, people listed accountability, followed by quality, local identity, access and value for money. It was also apparent that there was concern that a change to a unitary system would not solve the problems generated at 1 Angel Square. More detailed consultations with Focus Groups illustrated that people were 'angry'; once they had become fully aware of the long-term financial issues, many residents were indignant about the apparent lack of accountability by managers, Council members and auditors.

The consequence of the countywide consultation exercise is a proposed submission to central government, jointly drafted by all eight authorities in

Northamptonshire. This will be discussed by District Councillors across the county during the week commencing 27th August; locally, East Northamptonshire Councillors will meet to agree their position on 29th August.

The implementation of the two-authority arrangement will bring major changes to our local governance and one major consideration will be the financing of the new Councils. East Northants is likely to be absorbed in the new North Northants area along with Kettering, Corby and Wellingborough; of these four authorities, ENC residents currently make the lowest contributions to their District Council, so it's not difficult to imagine the impact the change will have on our payments.

East Northamptonshire residents will soon be receiving a form from the local authority seeking confirmation of voter registrations. The Household Enquiry Form (HEF) goes to every home in the district. It's addressed to the occupier and will contain the details of all those in the household who are registered to vote. Residents are being asked to confirm that these details are correct or to advise of any changes. You can respond in less than five minutes by going online or texting; there is also the option to reply by telephone or post. The quickest and cheapest way to reply is online at www.householdresponse.com/eastnorthants but that option won't be live until forms have been sent out.

SCS Packaging 01933 681681
Packaging, Catering and Cleaning Supplies for Commercial, Domestic and Industrial Services

Cake Decorating Supplies
For Amateurs, Professionals and Enthusiasts

From the basics - Sugar Paste, Cake Boxes, Boards and Dummies to Cake Lace, Moulds and Cutters. We have all the Baking and Cake Decorating supplies to complete your Wonderful Creations!

Units 1 & 2 Orchard Road • Finedon • Northants • NN9 5JG
Email sales@scspackaging.co.uk • www.scspackaging.co.uk

the modern acupuncture clinic

Are you suffering from:
Stress? Anxiety? Depression?

Let us help

Discreet and compassionate care at the modern acupuncture clinic

Tel: 01933 779 973
Email: contact@modern-acupuncture.co.uk
www.modern-acupuncture.co.uk

Art Classes

Starting September 18th
Full 10 Week Course
Suitable for Beginners and Experienced

Learn Creative Skills
Painting in Various Media
Acrylic, Collage, Watercolour, Drawing

Raunds Tuesday 10-12pm
Irthlingborough Tuesday 2pm - 4pm
Denford Wednesday 10-12pm

Contact Jamie: 07899 676769
Email: jamie@jamie-poole.com

the modern acupuncture clinic

Are you in PAIN?

Back pain, frozen shoulder, tendonitis or other musculoskeletal problems?

Let us help

Our approach at The Modern Acupuncture Clinic has a proven track record of bringing relief FAST!

Tel: 01933 779 973
Email: contact@modern-acupuncture.co.uk
www.modern-acupuncture.co.uk

Annual festival will return to Nene Valley next month

People across the district are invited to celebrate the rich heritage, wildlife and culture of the Nene Valley as the annual Nene Valley Festival returns this September.

The festival, which will take place from Saturday 15th September to Sunday 23rd September, will offer a whole host of activities that are guaranteed to be fun for all the family. Thanks to a boost in funding from Heritage Lottery through Nenescape, this year's festival will be bigger and better than ever before.

Featuring more than 110 events at key locations across the Nene Valley from Northampton to Peterborough, the festival will deliver an eclectic mix of activities for wildlife and culture lovers of all ages.

Northampton Borough Council will be hosting the

launch event at Becket's Park on Saturday 15th September. Councillor Anna King, cabinet member for Community Engagement, Northampton Borough Council, said: "We are once again very pleased that the Nene Valley Festival will be coming to Northampton and we are delighted to be hosting the first event of what promises to be an action-packed week.

"This year the Festival will be showcasing Becket's Park, which we are very proud of and where the Buddies of Becket's group are doing a fantastic job in bringing back to life this wonderful area of town centre parkland."

Fitness fanatics are invited to test their pedal power at

the Cyclefest taking place at Stanwick Lakes on launch day, and families can learn all about the rich history of the valley at Heritage Family Fun Day, which will be held at Rushden Lakes on Sunday 16th September.

To round off a fun-filled week of activities, the local community is invited to 'come and meet the settlers' at Stanwick Lakes on Saturday 22nd September and join in festivities at Peterborough Family Finale on Sunday 23rd September, at Peterborough Market Square.

The annual festival, which is celebrating its fifth year, is being organised through the Destination Nene Valley project, which aims to



promote the Nene Valley as a competitive, sustainable destination offering wildlife and heritage to local, national and international audiences.

East Northamptonshire Councillor and Board Member for the Destination Nene Valley project, Sarah Peacock, said: "We are delighted to be delivering the Nene Valley Festival once again this year. The event will offer a diverse range of activities, which will inspire people to connect

with the wildlife and heritage of the Nene Valley. We hope that our residents and visitors have a fantastic time celebrating everything that the local area has to offer."

The festival is one of the key projects within the Nenescape Landscape Partnership scheme, a five-year Heritage Lottery funded scheme that works

in partnership with 16 organisations along the River Nene, to celebrate and look after its natural and built history. In total, thanks to National Lottery players, Nenescape will have provided more than £72,000 worth of funding to Nene Valley Festival by 2022, and have been instrumental in the delivery of the event.

Visit www.nenevalley.net and follow @_nenevalley #nenevalley2018 on Twitter to keep up to date with the festival programme.

DB FACTORY SHOE STORE
LARGEST CHOICE & BEST PRICES
New Styles NOW IN

10% OFF
WITH THIS ADVERT
Quote: NVX1818F
Valid until 15/09/18

Wide feet or foot problems?
WE CAN HELP! Visit our specialist shoe fitting centre (on the same site)
Call **01933 410305**
www.widerfitshoes.co.uk
Opening times: Mon - Sat 10am - 4pm

Opening times: Mon - Sat 10am - 5pm.
Sun 10am - 4pm.
www.dbfactoryshop.co.uk
DB Shoes Ltd, 19-21 Irchester Road, Rushden, Northants NN10 9XF

SKECHERS **DUNLOP**
PROTECTIVE FOOTWEAR
FREE ROADSIDE PARKING

ReStrung
Having the fun all over again!

Baby-boomer covers, four-piece acoustic, fun-time band. Music for everyone to enjoy.

Suitable for a wide variety of events but parties a speciality

ReStrung.co.uk
restrungband@gmail.com
Neil 07977 413424 Frank 07928 747840

EAST MIDLANDS MUSIC

Introducing the BNPL Scheme at East Midlands Music Ltd.
Simply pay a deposit then spread the cost over 12 months.
Call us today or visit our Music Shop & Showroom.

01733 788 733
The Stables, Rectory Farm Offices,
Warrington PE8 6UT

IRTHLINGBOROUGH TOWN COUNCIL

NATIONAL LOTTERY FUNDED

Wedding Fair

Sunday 2nd September 11.30-2.30pm

Getting married?
Come along and meet a wide range of wedding suppliers to help make your special day even more magical.

A formal opening will take place at 11.15am by the Mayor and Dist. Cllr. M. Hillson newly refurbished venue.

**Community Centre,
Fettledine Road, Irthlingborough.
NN9 5XF**

For more information please contact –
Email: admin@irthlingborough-tc.gov.uk
northants@ambiencevenuestyling.com

Spotlight on Outdoor Activities



fermywoods
contemporary art

PROJECT SPACE & ARTIST STUDIO LAUNCH

From 5pm-7pm
14 September 2018

The Arches, Fineshade Wood,
Nr Corby, Northants, NN17 3BB

Visit fermywoods.org
more information.

Fermynwoods Contemporary Art

Fermynwoods Contemporary Art is launching The Arches – a project space and artist studio for 'The Forest Is the Museum', a programme of artists in residence at Fineshade Wood.

The Arches has been renovated by the Forestry Commission to celebrate their 100th anniversary and Fermynwoods Contemporary Art's 20th.

Join the free launch celebration, hear Fermynwoods team discuss plans for the space, and view work by the first artist in residence, Edwina FitzPatrick. You can also find Edwina's artworks installed in-situ around the forest.

From 5pm-7pm, 14th September 2018, Fineshade Wood, Nr Corby, Northants, NN17 3BB. Visit fermywoods.org for more information.



The Archive of the Trees
- Edwina Fitzpatrick

Local author wins award

Local children's author Stephanie Awbery from Stanwick has been named as a winner in this year's Wishing Shelf Book Awards, with her second book in the series *The Trouble with School!*

Her storybook, aimed at primary school aged children is intended to encourage

readers to talk about their emotions, to be accepting of others and deal with bullying.

Stephanie is a local primary and senior school teacher and has been fostering children with particularly challenging behaviours for over 18 years. She wanted to write a book that children would be able to relate to, while having some fun.

Stephanie has been able to share her enjoyment from books with the children she works with, and having been a BBC Radio 2 500 Words competition 'Superjudge', she knows children can create amazing stories and they love to share them too.

The Wishing Shelf Book Awards said of her book: 'A delightfully written story. This

could be a classic! A Bronze Medal Winner and highly recommended.'

The Trouble with School! creates an opportunity for children, parents and teachers to have open conversations about bullying and other situations that children may find difficult to deal with. To find out more about the awards, visit thewsa.co.uk



RESIDENTIAL & COMMERCIAL WASTE COLLECTION

Inter County Waste Management are typically **cheaper** than skip hire and are more **flexible**, you only pay for what we take away. Whether you have an old PC, a three piece suite, an old fridge/freezer or just a pile of rubbish.

We provide a **fully licensed 'on demand' eco-friendly** solution for households and businesses looking to dispose of waste, however big or small.

OTHER SERVICES: • Bin Cleaning – Euro & Wheelie Bins • Litter Picking • House Clearance
• End of Tenancy Clear & Clean • Window Cleaning • Grounds Maintenance • Bus Shelter Maintenance
• Garden Waste Removal • Graffiti Removal • WEEE Waste Disposal • Shredding

OFFER **NORTHAMPTONSHIRE RESIDENTIAL BIN CLEANING OFFER:**
£96 for 12 months bin cleaning - up to 4 bins
Receive 10% OFF by quoting 'NENEVALLEY'

Call us today! 01933 315872
Brindley Close, Rushden, Northamptonshire NN10 6EN
For more information visit: www.intercountyltd.co.uk



OUTDOOR LIVING AT ITS VERY BEST



Scotts summerhouses provide the perfect garden hideaway.

Whether you like to entertain friends or to simply escape with a morning paper, Scotts has a building to suit.

Scotts offers a range of octagonal, corner and larger summerhouses or can create a bespoke building, to almost any shape or size, to suit your garden.



Scotts is holding a number of promotional open days in 2018, at its Thrapston showsite, and the next dates are:

7th & 8th September 2018

The showsite will be open from
10am – 3pm.

For further details of our open days or to request a summerhouse brochure, please call Kathryn Morris on
01832 732366

Scotts of Thrapston Ltd. Bridge Street, Thrapston. NN14 4LR

www.scottsofthrapston.co.uk

Oundle Ladies through to Cecil Leitch Finals!

**Cecil Leitch semi-final report:
Oundle v Whittlebury Park at
Brampton Heath Golf Club.**

Well done to the Oundle Ladies Cecil Leitch team who are through to the finals after beating current holders Whittlebury Park by 5 games to 2 at

Brampton Heath. There were very closely contested matches with one going to the 20th, one to the 19th and two finishing on the 18th. A great team effort, with thanks also going to the caddies and supporters. The final will be against Northants County who beat Wellingborough also by 5 games to 2, Wednesday 12th September at Northampton Golf Club, Harleston at 1pm. It is sure to be an exciting final.



Your Health – Holiday injuries

Why is it that so many people end up on our treatment couches after a holiday? Holidays are supposed to be fun and relaxing, but every year we have to help people who are in pain from holiday injuries. And it's not just injuries from lifting heavy luggage – we see problems caused by high speed banana boat falls, volleyball games, swimming, and even from sunbathing!

Here are my thoughts on what you can do to avoid summer injuries:

- 1 If you're going to do something energetic, and you've not exercised for several months do a little warm-up first. Swing your arms around, shrug your shoulders, have a little jog – loosen up your joints and muscles before you get going.
- 2 If you exercise regularly ignore the advice above. You know how to warm up, so just do your normal routine.
- 3 Drink water. Stay hydrated if it's hot.
- 4 Use rolled up towels or mounds of sand to support your body when you're

sunbathing. We see many problems caused by lying face down, so make sunbathing comfortable.

- 5 Lift carefully. Just because you're on holiday, you cannot afford to be lazy about lifting.
- 6 Wear shoes that suit your feet! If flip flops cause you shin pain or heel pain, get some Fit Flops. If summer ballet pumps make your feet ache, wear a sandal that is a bit more supportive. Don't follow the advice of friends and family – listen to your feet. And remember that walking is good for you. In the cooler mornings and evenings go for a walk.

Personally, I'm delighted with the dry weather this year. It means I've not had to use the pesky lawnmower!

Top tip: Rolling your shoulders around during the day is a great way to ease any shoulder and neck aches from overdoing it during the holidays.

Have a lovely holiday if you're going away, and if not, enjoy not having to mow the lawn!

Claire



Claire Short is a Registered Osteopath and runs The Ashgrove Clinic in Higham Ferrers. Send questions to claire@ashgrovehealth.co.uk or @ashgroveclinic

Wildlife News

Slowly the evenings are starting earlier; we have already lost more than a few hours of daylight and the rate of loss will increase for a few more weeks.

For some creatures that may be welcome; the extraordinarily hot summer we have endured, or enjoyed, this year has been fine for many animals, with extra supplies of food for insect-eaters and less danger of the very young dying from sudden cooler spells. The benefit spreads upwards, and seemed very helpful to a group of mammals which many people know about but fewer have seen, certainly at close quarters – bats.

We should really say two groups with different appearances; two species called horseshoe bats have a flap of skin on their faces, with a dozen or so species in the other group. Most of us do not have the chance to see the difference, for they are all 'creatures of the night', not appearing until daylight has almost disappeared. The late awakening is because bats feed on flying insects like the moths which appear round house and street lights and there

have been plenty of those insects around. They are caught in flight, and obviously in very poor light, so bats have developed remarkable abilities, so precise that they can navigate through a web of black thread in darkness without becoming tangled up (in tropical countries much larger fruit bats are equally skilful)

This ability works by sound (or what would be sound if we could hear it!); bats' calls differ from what our ears receive, and their agility outperforms any gymnasts. Technological development has made use of these 'ultrasonic' calls, and anyone can now buy little detectors to convert the bats' 'noise' into a form we can hear, to help identification. There is, of course, a downside for these small creatures (with local names like 'flittermouse' though not related) as their numbers are dropping. One remedy being tried in some areas is to build 'bat boxes' into new houses, as that is considered to be one possible remedy. In case you are worried, be assured, they have no wish to get tangled up in your hair!

By Roy Burrell

QUALITY PETROL LAWMOWERS FROM £169



Mowerman
GARDEN MACHINERY LTD
DOMESTIC & COMMERCIAL

- SERVICE & REPAIR • INHOUSE WORKSHOP
- SUPPLIERS OF STIHL, CUB CADET, ATCO, WOLF TOOLS AND MUCH MORE • PARTS AVAILABLE
- COLLECTION AND DELIVERY SERVICE

MOWERMAN GARDEN MACHINERY LTD
UNIT 120 • LEYLAND TRADING ESTATE • IRTHLINGBOROUGH ROAD
WELLINGBOROUGH • NORTHAMPTONSHIRE NN8 1RT

TELEPHONE 01933 274410

enquiries@mowermanlawnservices.co.uk



Your Dream Bathroom Starts Here



The Bathroom Fitting Co

Professional Bathroom Installation By Experts

Online Brochure-www.bathroomfitting.co

Email-info@bathroomfitting.co

We are a specialist bathroom design & installation company fitting top quality bathrooms for our trade & retail clients.

We can fit your own products or supply all the leading brands at very competitive prices

Call 01933 754 754 or Free Phone 0800 009 6966

Roca . Vitra . Grohe . Kudos . Laufen . RAK . Burlington . Aqualisa . Duravit . Ideal Standard



Notice of planning applications received

Significant applications - All “significant” applications are highlighted in green. These are defined in the 2006 Statement of Community Involvement as those for:

- 100 dwellings and over
- residential development of 3ha or over if number of dwellings not known

- 1000 square metres of floor space or over
- commercial/industrial development of 1ha or over if floor area not known
- would, in the council’s opinion, alter the overall character of the locality by means of scale, use or visual appearance

- would, in the council’s opinion, be sensitive due to substantial demolition in a conservation area
 - would, in the council’s opinion, be sensitive due to development next to a listed building
- For more information on “significant” planning applications, visit www.east-northamptonshire.gov.uk/dcnotification

Notice is given that the following applications have been received together with the last date for making representations:

Brigstock
18/01437/FUL (15/09/2018) (Art8) To erect a new portal frame forage store in a position currently occupied by a static caravan and relocation of static caravan for continued occupation by the applicant at Spinney Hill Paddocks Stanion Road Brigstock NN14 3FF
18/01525/VAR (08/09/2018) (Info) Variation of condition 5ii pursuant to planning application 17/02567/FUL: Erection of a detached dwelling and a detached triple garage dated 07.02.2018 at 1 Hunter Rise Brigstock

Collyweston
18/01485/FUL (08/09/2018) (Info) Replace casement window with a pair of French windows and Juliette balcony at 5 Field Close Collyweston PE9 3QS

Deenethorpe
18/01353/FUL (08/09/2018) (Info) Conversion of farm buildings to a dwelling including formation of garden and parking area at Home Farm Lodge Deenethorpe Airfield Deenethorpe NN17 3AN

Fotheringhay
18/01521/FUL (15/09/2018) (LB/CA) Replacement outbuilding at 25 Main Street Fotheringhay PE8

Glaphthorn
18/01496/FUL (08/09/2018) (Info) Proposed two new cottage style dwellings at land adjacent The Cottage Benefield Road Glaphthorn PE8 5BQ

Higham Ferrers
18/01296/FUL (15/09/2018) (LBRegs) Construction of Memorial Garden at St Marys Parish Church Church Walk Higham Ferrers NN10 8BT

Irthlingborough
18/01305/FUL (15/09/2018) (LB/CA) Retention of A5 use in existing property; two storey extension to existing property to provide A3 floor space to ground floor and offices/storage space plus two, one-bedroom flats to first and second floors at 5A Station Road Irthlingborough NN9 5UQ
18/01476/VAR (08/09/2018) (Info) Variation of condition 3 and 14 to allow amended footpath layout pursuant to planning permission 18/00448/VAR dated 15.5.18 Variation of conditions 3 - Approved drawings and plans, 7 - Lighting Scheme and 14 - Landscaping pursuant to planning application 15/01191/FUL: Development of two buildings to provide an Aldi food retail store (Class A1) and day care centre (Class D1b), new car parking, landscaping, associated servicing and means of access
Condition Number(s): 3 (approved drawings and plans) 14 (landscaping)
Conditions(s) Removal: To adopt a slightly amended footpath layout which avoids using land in separate ownership.
Condition 3 -The list of approved plans to be amended to substitute new drawings as follows: Omit drawing numbers Y11A43-P504 (site plan) and Y11A43-P505 (landscaping) as

approved by 18/00448/VAR Add drawing numbers Y11A43-P604 (site plan) and Y11A43-P605 (landscaping) at Land West Of Attley Way Irthlingborough
18/01523/FUL (08/09/2018) (Info) Two storey rear extension at 10 Elizabeth Way Irthlingborough
18/01554/FUL (08/09/2018) (Info) Two storey rear extension - part retrospective at 11 Premier Way Irthlingborough NN9 5QJ

Islip
18/01391/FUL (08/09/2018) (Info) Crossover and access to provide off road parking to dwelling at 51 Kettering Road Islip NN14 3JT
18/01509/FUL (15/09/2018) (LB/CA) New timber framed building to provide garage with storage/office over and conversion of existing double garage into games room in main house at The Coach House Chapel Hill Islip NN14 3JP
18/01570/FUL (15/09/2018) (LB/CA) Replacement of lead sheet roof covering to the north aisle and vestry at St Nicholas Parish Church High Street Islip NN14 3JS

Kings Cliffe
18/01489/FUL (08/09/2018) (Info) Erection of two storey side extension, a 1.8 metre high fence both the side and rear boundaries and a 5 metre high fence including both pedestrian and vehicular access gates top front boundary at 7 Pine Lane Kings Cliffe PE8 6YR

Nassington
18/01373/FUL (08/09/2018) (Info) Two storey extension at 15 Northfield Lane Nassington PE8 6QJ

Oundle
18/01453/FUL (08/09/2018) (Info) Alterations and extensions to the main house including new doors, windows and over rendering and cladding the entire house. Creation of an annexe from the existing garage and provision on an open sided carport at 35 Bellamy Road Oundle PE8 4NF
18/01455/FUL (15/09/2018) (LB/CA) Outbuilding to the rear garden at 41A West Street Oundle PE8 4EJ
18/01549/LBC (15/09/2018) (LBRegs) Installation of width restriction build outs at both ends of the North Bridge in Oundle. These works are necessary following recommendations by Highway Structural Engineers to enforce a 3 tonne weight limit over the span of the bridge due to the weak arches. The width restriction build outs will be installed within the fabric of the highway and no alterations or demolition of the Grade II listed structure are proposed, these works aim to preserve the structure until funding can be sourced for repairs at North Bridge Station Road Oundle PE8 4DB
18/01556/FUL (15/09/2018) (LB/CA) Erect PVCU conservatory to rear of property at 91 West Street Oundle PE8 4EJ

Pilton
18/01381/FUL (15/09/2018) (LB/CA) Relocation and replacement of LPG tank and replacement windows at Ivy House Main Street Pilton PE8 5SN
18/01382/LBC (15/09/2018) (LBRegs) Replacement of existing cellar ceiling / hall floor, creating a new internal doorway between the hall and home office and replacement windows creating a new internal doorway between the hall and home office at Ivy House Main Street Pilton PE8 5SN

Raunds
18/01314/FUL (08/09/2018) (Info) Erection of 1 dormer bungalow at land at 60 Thorpe Street Raunds

Ringstead
18/01405/FUL (08/09/2018) (Info) Replace all existing brown painted wooden windows and doors with UPVC windows and doors in ‘anthracite grey’ replace existing timber fascia with grey UPVC solid fascia board and tongue and groove effect soffit, replace brown guttering and downpipes with grey coloured guttering and downpipes at 1 Orchard Close Ringstead NN14 4QX

Rushden
18/01364/FUL (15/09/2018) (LB/CA) Two storey rear extension to extend the commercial ground floor and provide an additional one bedroom bedsit above: new roof terrace to provide private amenity space to proposed bedsit and existing flat above existing commercial unit at 33 High Street Rushden NN10
18/01377/FUL (08/09/2018) (Info) First floor side extension over existing single storey element at 2 Millers Close Rushden NN10 9RP
18/01388/FUL (15/09/2018) (Art8) Full planning permission (inc details of access, layout, scale, appearance and landscaping) for 80 dwellings, highways layout, open space and all other associated infrastructure at land east of Brindley Close Northampton Road Rushden

18/01392/FUL (08/09/2018) (Info) Change of use to revert office use back to residential use. No changes externally or internally (retrospective) at 55 North Street Rushden NN10 6BU
18/01439/FUL (08/09/2018) (Info) Change of use from vacant B1 to sui generis use as eleven units (inclusive of a manager’s accommodation) of House in Multiple Occupancy, alterations to the roof and elevations, including new windows and doors and the blocking-up of openings, provision of refuse stores and cycle parking at 42 Victoria Road Rushden NN10 0AS

18/01456/FUL (08/09/2018) (Info) Proposed first floor extension to garage and link. Front facing dormer and additional first floor windows. New boundary fence to highway and timber entrance gates at 134 Northampton Road Rushden NN10 6AN
18/01460/ADV (08/09/2018) (Info) Non illuminated fascia sign at 12 Queen Street Rushden NN10 0AA
18/01484/FUL (08/09/2018) (Info) Erection of rear dormer to allow loft conversion at 52 Wymington Road Rushden NN10 9JX

18/01487/FUL (08/09/2018) (Info) Single storey rear and side extension at 4 St Margarets Avenue Rushden NN10
18/01524/FUL (08/09/2018) (Info) Detached garage and second access from highway at 2 Sandringham Close Rushden NN10 9ER

Tansor
18/01400/LBC (15/09/2018) (LBRegs) Installation of internal secondary glazing to the windows of “Garden Flat” at Tansor Manor Fotheringhay Road Tansor PE8 5HN

Thrapston
18/01438/VAR (15/09/2018) (LB/CA) Variation of condition 2

- to allow development to be carried out using alternative cladding pursuant to application 18/00523/FUL
Replacement of double doors/Sidelights to 2nd floor balcony. Shiplap boarding to top third of glazed gable frames dated 15.05.2018 at 14 Chicheley Cottages Thrapston
18/01451/LBC (15/09/2018) (LBRegs) Internal alterations to units 71-73 and 75 at 71-75 High Street Thrapston
18/01473/FUL (15/09/2018) (LB/CA) Proposed replacement of existing garage with a two storey two bed dwelling and associated site works at 68 Market Road Thrapston NN14 4JU
18/01580/FUL (15/09/2018) (LB/CA) Proposed single storey rear extension at 98 Market Road Thrapston NN14 4JU
18/01582/FUL (15/09/2018) (LB/CA) Proposed single storey rear extension at 100 Market Road Thrapston NN14 4JU

Thurning
18/01522/FUL (08/09/2018) (Info) Single storey rear extension at 21 Main Street Thurning PE8 5RB

Wadenhoe
18/01331/LBC (15/09/2018) (LBRegs) Works to the outbuilding at the rear of the property: Raise the ceiling, fit two conservation roof lights to the rear North West elevation, to replace the windows and doors with similar style and install a shower and toilet in the small room to the south west of the building at 31 Church Street Wadenhoe PE8 5ST

Warmington
18/01149/FUL and 18/01150/LBC (15/09/2018) (LB/CA) (LBRegs) Retrospective - Replacement of existing conservatory glass roof and replacement of existing floor tiles to match existing tiles in adjoining room at The Malt House 61 Church Street Warmington PE8 6TE
18/01511/FUL (08/09/2018) (Info) New oak framed orangery to replace UPVC conservatory at 14 Long Lane Warmington PE8 6TD
18/01537/VAR (08/09/2018) (Info) Variation of condition 8 (landscaping) and condition 11 (approved plans) to allow amended parking arrangements pursuant to 16/01644/FUL: Demolition of existing dwellings and outbuilding and erection of four no. two storey dwellings dated 16.11.2016 at Former 12 Chapel Street

Woodford
18/01385/FUL (08/09/2018) (Info) Two storey rear extension at 28 Mill Road Woodford Kettering NN14 4HH

The reason for applications being advertised is as follows:
Part3 - Town and Country Planning (General Development Procedure) Order 2015.
Part16 - Town and Country Planning (General Development Procedure) Order 2015.
Info - Non-statutory - included for information only.
LB/CA - Planning (Listed Buildings and Conservation Areas Act 1990.
LBRegs - Planning (Listed Buildings and Conservation Areas) Regulations 1990.

Paul Bland, Head Of Planning Services
Dated 25 August 2018

Consultation deadlines will differ for each application. Please go to www.east-northamptonshire.gov.uk/planningapplications for details.

From the ENC Chairman

I’ve always loved the tranquillity and beauty of gardens and the new labyrinth and peace garden at Easton-on-the-Hill is a beautiful place to spend time.

Officially opened by resident Harold Gregory, with a dedication by Bishop John Flack and Rev Philip Davies, the gardens which are part-funded by the East Northamptonshire Council Community Facilities Fund, are the ideal place for contemplation and reflection, particularly as they sit alongside the beautiful village church. Many years of planning and hard work have created a special place for all to sit and enjoy and I thoroughly recommend a visit. To find out more about the gardens and what it took to create them, visit www.eastonlabyrinth.co.uk

From the rural north of the district to our more urban south, a new code word campaign for people feeling unsafe on a date has been launched by East Northamptonshire Council, working in partnership with Northamptonshire Police and

National Pubwatch.

If your date isn’t all that they seemed, for example they look nothing like their profile picture, are acting strangely or they simply make you feel uncomfortable, simply go to the bar and ‘Ask for Angela’. The member of staff will see this as a sign that something isn’t right and you need help. This could simply be to keep an eye on you or even take you to a safe room and call a taxi.

Pubs, clubs and restaurants in East Northants currently signed up to the campaign are:

- Higham Ferrers - The Queen’s Head, Joe’s Bar, The Carriage House, The Griffin, The Green Dragon
- Rushden - The Rose and Crown, Cheers, The Welcome Inn, Rushden Bowls Club



- Stanwick - Stanwick Club
 - Raunds - The World Upside Down, Raunds Town Cricket Club, Snooks, The George and Dragon, The Red Lion, The Globe
 - Thrapston - The King’s Arms, The Court House
 - Islip - The Woolpack Inn
 - Oundle - Onkar, The Ship, Brewbabu, The Talbot Hotel, The George Inn
- So if you’re on a date and don’t feel safe, go to the bar and ‘Ask for Angela’.

Cllr Wendy Brackenbury, ENC Chairman

Group launches fundraising campaign

The Oundle Recreation and Green Spaces Group, a community group set up in 2015 to protect the town's accessible green spaces, has launched a community-wide crowdfunding bid to secure the future of Fletton Field in the centre of Oundle.

In earlier times Fletton Field was an allotment for Oundle's workhouse but latterly it was been the Primary School's playing field. The site was put up for sale by the current land owner, Northamptonshire County Council (NCC); their intention is to sell it for development. NCC had planning permission for housing on this site refused in 2016, with lack of alternative green space given among the reasons. Oundle Town Council recently applied to list Fletton Field as a formal Village Green but were unsuccessful, despite the appointed inspector recognising the extensive use by Oundle residents; the decision accepted NCC's argument that use took place with their express permission and thus dismissed the case for a Village Green. However, East Northamptonshire District Council have listed Fletton Field as an Asset of Community Value allowing the local community the opportunity to raise funds and submit a bid for the land. Connells Estate Agents, acting for NCC, have recently confirmed the deadline for bids as late September 2018, with a decision on preferred bid in mid-October.

There is a growing body of evidence that recognises the immense value of accessible green space within towns for our wider health and wellbeing. A fact recognised by the County

Council's own Health and Wellbeing Strategy. Indeed, a recent study by Fields in Trust found that parks and green spaces are estimated to save the NHS around £111 million per year based solely on a reduction in GP visits and excluding any additional savings from prescribing or referrals. The Wellbeing Value associated with the frequent use of local parks and green spaces is worth £34.2 billion per year to the entire UK adult population.

Oundle already has a lack of accessible green space. Ten times less per person than Raunds, and five times less than Burton Latimer. Losing this field will further reduce Oundle's accessible amenity green space by 40%. The location of Fletton Field makes it particularly important because of the close proximity to local sheltered housing, care homes, Fletton House (the Community Hub centre), the Doctors surgery and the Library; all of this makes the site the most widely accessible green space within the town.

It's worth noting that Fletton Field has never been recommended as a potential development site for inclusion in Oundle's Neighbourhood Plan. NCC's secondary proposal for this site states this field is the only location for extra care elderly living; however there are alternative, redundant buildings in Oundle close by and numerous other development sites proposed in the Neighbourhood Plan.

Local businesses, organisations and individuals are asked to help the campaign by pledging what they can to the land purchase

fund via a crowdfunding website. Eighty percent of the funds towards the bid have been secured. It is hoped this crowdfunding will secure the remaining 20% and you can donate at www.spacehive.com/saveflettonfield. Pledges will only be charged if the bid is successful. The crowdfunding proposal has been verified by the charity Locality, and went live in July. Any and all help from across the community is welcomed, from sharing

the campaign on social media to joining the Charity board.

If you would like to pledge your support for the campaign but would prefer to do so without using the internet then please contact Oundle Town Council at Fletton House or phone 01832 272055. To join the team please email flettonfield@gmail.com. All information for the campaign and contacts can be found at www.saveflettonfield.org.uk

Ada Salter Spinney opens

On Saturday 11th August, Cllr Richard Levell, Mayor of Raunds, welcomed Cllr Catherine Rose, Mayor of Southwark and guests to the official opening of the Ada Salter Spinney and Garden.

Raunds Town Council created the memorial garden in the renamed Ada Salter Spinney to celebrate the life and achievements of Ada Salter. Born in Raunds, Ada was the first female Mayor of a London Borough, becoming Mayor of Bermondsey (now part of the Borough of Southwark) in 1922. She was known for her belief that the beautification of open spaces improves the quality of life.

Cllr Levell said: "With her campaign to 'beautify' urban areas, Ada Salter was a remarkable lady, whose ideas are still relevant in the 21st century. We in Raunds should be very proud of her, and it is entirely

fitting that we have commemorated her in this way. I hope that, while they enjoy sitting in or walking through the garden, the residents of Raunds remember that, without Ada, our towns and cities would probably be a lot less green and look a lot more bleak."



Perfect Balance Pilates

'the art of exercise'

Monday

Personal Training 10.30 - 11.30am
Finedon 6.30 - 7.30pm starts 15th Oct
Islip 8 - 9pm starts 24th Sept

Tuesday

Rushden 11.00 - 12noon starts 2nd Oct
Rushden 6.45 - 7.45pm starts 2nd Oct

Wednesday

Yelden 6 - 7pm starts 17th Oct

Thursday

Oundle 9.30 - 10.30am starts 6th Sept
Rushden 11 - 12noon starts 6th Sept
Rushden 6.15 - 7.15pm starts 6th Sept
Rushden 7.30 - 8.30pm starts 6th Sept

Friday

Personal Training 10.30 - 11.30am

07833 373622

info@perfectbalancepilates.com

www.perfectbalancepilates.com

[thepilatesprinciple](https://www.facebook.com/thepilatesprinciple)
 [pilatesbreath](https://twitter.com/pilatesbreath)

Quality Repairs To Windows & Doors

THRAPSTON GLAZING
Est 85 **WINDOW & DOOR REPAIRS**

FREE QUOTES FREE GENUINE ADVICE

QUALITY REPAIRS TO ALL MAKES OF WINDOWS, DOORS AND CONSERVATORIES SUPPLIED AND FITTED BY ANY COMPANY.

REPLACEMENT GLASS UNITS, NEW LOCKS, NEW HINGES, NEW LETTERBOXES, NEW HANDLES ETC... WITH COMPLETE FITTING SERVICE

WE ALSO SERVICE WINDOWS, DOORS AND PATIO DOORS ADJUSTING AND LUBRICATING AS WE GO, BADLY ADJUSTED DOORS ARE THE MAIN REASON FOR LOCK FAILURE.

WE STOCK AND SOURCE THOUSANDS OF SPARE PARTS TO SUIT ALL MAKES OF WINDOWS AND DOORS

OTHER SERVICES INCLUDE, CUT GLASS, TOUGHENED GLASS AND GREENHOUSE GLASS ALL DELIVERED TO YOUR DOOR WITH FITTING SERVICES IF REQUIRED.

ALL OUR FITTING ENGINEERS HAVE OVER 30 YEARS EXPERIENCE WORKING FOR US.

PLEASE CALL OR EMAIL US FOR A FREE QUOTATION

01832 734570

www.thrapstonglazing.co.uk
windowanddoorrepairs@talktalk.net

Free Quotations • No Obligation

RB Travel
01536 791066

SEPTEMBER

Wed 5 Oxford
Thu 6 Nottingham Cruise & Lunch
Fri 7 Hull
Sat 8 Ludlow or Ludlow Food Festival
Sun 9 Emmerdale Village Tour
Sun 9 Skegness or Wisley Flower Show
Wed 12 Midsomer Murders Tour with lunch
Thu 13 Heartbeat Country
Fri 14 Bristol
Sun 16 Gloucester or Gloucester Quays
Wed 19 Sheringham & Norfolk Railway
Fri 21 Southwold
Sat 22 Stamford Georgian Festival
Sun 23 Great Yarmouth
Tue 25 Moreton & Bourton
Fri 28 Stratford Upon Avon
Sat 29 Bakewell Farmers Market
Sun 30 Malvern Autumn Show
Sun 30 Show Bus International

OCTOBER

Wed 3 Cotswold Tour
Thu 4 RBL Poppy Factory & Lunch
Mon 8 Bath
Tue 9 Gloucestershire & Warwickshire Railway
Thu 11 Phantom of the Opera
Fri 12 De Havilland Aircraft Museum
Sat 13 Boobs & Brass in Lincoln
Sat 13 Bletchley Park Code Breakers
Sat 13 Milton Keynes Shopper
Sun 14 Battle of Britain Memorial Museum
Tue 16 Cambridge
Tue 17 Black Country Museum

Call us to book or request a brochure
Check out our website for further days out
www.rbtravel.co.uk

TAURUS
Holidays

September

Thu 13 Cornish Delights, West Looe
– 5 days £449

October

Thu 18 East Yorkshire –
Kingston Upon Hull – 5 days £329

Sun 28 Autumn Mystery Tour – 5 days
(Only single rooms left) £359

November

Mon 12 Taste of Christmas –
St Anne's on Sea – 5 days £425

December

Fri 7 Valkenburg Christmas Markets
– 4 days £375

Sun 23 Christmas in Lytham
– 5 days £609

Sun 30 New Year in Worthing
– 4 days £459

CALL NOW ON
01536 791066
TO GET OUR FREE BROCHURE!
taurus@rbtravel.co.uk
www.taurusholidays.co.uk

Excellent post-16 results at Huxlow Science College

Students at Huxlow Science College in Irthlingborough celebrate outstanding A-level and BTEC results.

Year on year, Huxlow students achieve exceptional post-16 results in Science and Maths, and this year is no exception.

William Parker achieved three As in Physics, Chemistry and Maths and these outstanding results secure his place at Nottingham University to study Physics. Harley Hadingham also performed exceptionally well in the same subjects, gaining 2 As and a B; he now looks forward to a career in Chemical Engineering with the Navy, where he will complete his degree. Darcy Tiernan was also delighted with her results in Maths, Chemistry and Biology, which have gained her a place to study Biological Sciences (Biochemistry) at Leicester University.

BTEC vocational students performed particularly well in Sport, Applied Science and Health & Social Care. 100% of students who studied Applied Sciences gained the equivalent of B or above. Emily Underwood achieved two Distinctions in Applied Science alongside A-levels in Psychology and Sociology and an excellent A grade in the Extended Project

Qualification, which assures her university entry to study Animal Management and Welfare. Ashleigh Massingham gained two Distinction* and a Distinction in Health & Social Care and is now looking forward to doing Education Studies at De Montfort University. Grace Forton's excellent BTEC results in Health & Social Care (Distinction* and two Distinctions) gained her a place at Reading University to read Language Sciences, after which she intends to pursue a career in Speech Therapy.

Headteacher Steve Gordon said: "These are excellent outcomes for our students who have studied A-levels and BTECs. It is down to the hard work of both students and staff. We have offered high quality careers advice to ensure that all students have studied courses that are well tailored to their talents and aspirations. This has resulted in some prestigious university destinations for our students as well as sought-after apprenticeships, further education and employment prospects.

"We have left no stone unturned in terms of teaching



and learning and we are really proud of our students and the incredible commitment they have shown to their studies. Congratulations to the individuals who have achieved exceptional results which will secure their first choice of university."

This year, the secondary school welcomed its largest

sixth form to date, with the new Sixth Form Centre offering Year 12 and 13 students a dedicated area to pursue their studies and enjoy a thriving community hub. Numbers are due to rise again in September 2018, with more students each year choosing Huxlow for their post-16 studies.

Huxlow Science College, The Ferrers School and

Rushden Academy work together to create a unique post-16 learning community, The East Northamptonshire College (TENC), combining the strengths of the three schools. With a long and excellent tradition of success, TENC offer students from across East Northamptonshire the widest range of courses in the county.

Oundle's A-level results

Oundle School is delighted with another year of strong results in Sixth Form examinations. 22% of grades were at A* level and 58% were A* to A. Over 10% of the pupils in the year group secured at least three A* grades or equivalent, of whom Chingis Idrissov, Rebecca Siddall, Kadi Sun, Arthur Thomson, Samuel To and Kimi Xie achieved four A* or equivalent. Over a third of the year group achieved straight As or better.

The school prepares pupils in 30 different

subjects, 10 of which follow the Cambridge Pre-U programme. 29% of Pre-U entries achieved D1 and D2 grades, the equivalent of A* at A level. D1, which identifies the highest-performing pupils, formed 10% of all Pre-U grades awarded.

Performance was strong across all subjects: notable success came in Chemistry, Greek, History, Italian, Further Mathematics, Latin, Mandarin Chinese, Physics and Russian, where 33% or more of all candidates secured A* grades or equivalent.

Pupils are now celebrating securing their university places, including 18 pupils who have achieved their offers for Cambridge or Oxford entry, as well as those at leading international universities in the United States, Canada, Hong Kong, Europe and South-East Asia.

Head of Oundle School, Sarah Kerr-Dineen commented: "These are impressive results from a strong group of pupils who made the most of everything within and beyond the classroom: I am very proud of them."

Prince William School pupils gain top marks in A-level examinations

Staff and students at Prince William School in Oundle are celebrating after receiving A-level results with 61% A* to C grades, 96% A* to E grades, and an overall average grade C.

Special congratulations go to top performing students Callum Curtis who got A*AA, Isaac Bankart and Bethany Lee who both got AAA, and Zach Normington who got A*A B.

The school, which is sponsored by the

EMLC Academy Trust, is particularly proud of results in Maths, Product Design, History and Dance, in which more than 50% of students achieved grades A* to B.

Principal Elizabeth Dormor said: "My congratulations go to

all our students on their results, who have made significant progress during their time in the sixth form at Prince William School and been supported to reach their full potential.

"I am delighted that so many have got the grades they need in order to progress to university or the next step of their choice.

"My thanks also go to all the staff who have worked so hard to help the students to achieve such great results."

Local students look ahead after another year of 'stunning' results

Despite the significant changes to A-levels this year, Ferrers, Huxlow and Rushden students from The East Northamptonshire College are once again reaching the highest standards with their A-level results.

Amongst the standout achievements were Rushden Academy students Owen Walding, who achieved an A* in English Literature and two A grades in French and German and will take up his place to read Modern Languages at Girton College Cambridge, and Katherine Stretch who gained an amazing A* in English Literature, A in French, A in Mathematics and an A in Further Mathematics. She will be taking her place to read English and French at Warwick University. William Parker from Huxlow Science College was awarded three As in Mathematics, Physics and Chemistry and is off to Nottingham to study Physics and Harley Hadingham, also from Huxlow achieved two A grades in Chemistry and

Physics and a B in Mathematics and is going to study Chemical Engineering at Loughborough University. Lois Gorst from The Ferrers School achieved four A grades in Mathematics, Further Mathematics, Chemistry and History. She is going to Birmingham University to study Maths with Business Management. Chloe Turner, also from Ferrers, achieved three A grades in Geography, History and English Lit/Lang. Chloe will read English at York.

Other high-fliers were Olivia Taylor from Ferrers who achieved three As and a B and is going to study Biological Sciences also at Warwick and another Ferrers student Harry Martin achieved an A* in Mathematics, an A in Further Mathematics, an A in Biology and a C in Chemistry. He

will study mathematics at St Andrews in Scotland. Emily Wilding, from Rushden not only got two A grades in Mathematics and Further Mathematics but also distinction/merit grades in BTEC Performing Arts.

The East Northamptonshire College BTEC results were equally as impressive with a high percentage of students achieving at Distinction* grades, equivalent to A* grades at A-level. Performing Arts were celebrating Cameron Browne gaining a triple distinction and Destiny Kelly D*DD. Bradley Carter and Kyle Denney both achieved D*D in sport. Huxlow students Ashley Massingham achieved D*D*D in Health and Social Care and Grace Forton D*DD, both have gained places at university to study health related subjects. Health and

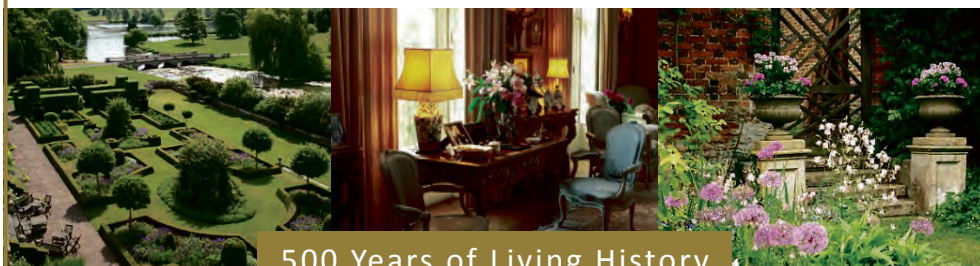


Social Care student Diana Manuel also achieved Health and Social Care D*DD grades and is excited about going to Nottingham University to study Criminology and Social Policy.

Elaine Brooker, Director of the East Northamptonshire College said: "The achievements of these students are stunning. Staff and students from across

the three schools have worked so hard to achieve such impressive results and all that hard work has paid off. We are delighted that all those seeking university places have been successful, the overwhelming majority at their first choice destination. We wish them all continued success in the future."

DEENE PARK HOUSE AND GARDENS



500 Years of Living History

Opening Times

House, Gardens and Tearoom

Sundays and bank holiday Mondays until September 2nd. Wednesdays in September. 12pm-5pm, house opens at 2pm. Last house admission 4pm.

Weekday Gardens and Tearoom

Tuesday to Friday until September 14th. 12pm-4pm. Last admission 3.30pm.

See website for admission prices.



Location

Located off the A43 between Stamford and Corby / Postcode: NN17 3EG

Contact

T: 01780 450278 / E: admin@deenepark.com / W: www.deenepark.com

FAMILY LAW ADVICE

We'll help you make the right choices.

- Free initial phone call
- Divorce and relationship breakdown
- Marriage and relationship planning
- Finances on separation
- Children
- Domestic violence
- Mediation

NORTHAMPTONSHIRE
LAW SOCIETY
LARGE LAW FIRM
OF THE YEAR
2017

THE
LEGAL
500
UNITED KINGDOM
LEADING FIRM
2017

Highly rated by
the Legal 500,
a Who's Who
of the legal world.



01933 697511
enquiries@wilsonbrowne.co.uk
wilsonbrowne.co.uk

wilson browne SOLICITORS
All the help you need

60-mile walk around the Norfolk coast for cure Parkinson's Trust

Tim Daber from Oundle was diagnosed with Parkinson's aged 58. Now he is set to undertake his '60/60' walking challenge – a 60-mile walk round the North Norfolk coastline to raise money for The Cure Parkinson's Trust (CPT) which will also mark his 60th birthday.

Tim will walk the 60 miles over four days, beginning in Sea Palling and following the scenic coastline round to Hunstanton. He has set himself a fundraising target of £100,000, a huge amount which will be directed towards urgently needed research into a cure for Parkinson's. Tim has already collected an incredible £47,000. At diagnosis in 2016,

Tim was told that Parkinson's was an incurable disease. It wasn't until he heard a Professor of Neurology interviewed on the radio that it registered with Tim that a cure for Parkinson's could be found with the right targeted research.

"I was stunned as it had never for a moment occurred to me that a cure hadn't been found due to a lack of funding. I knew

immediately that I had to do something about it."

Tim will be joined on the last day of his walk by best-selling author B A Paris, known for her crime-thriller novels *Behind Closed Doors*, *The Breakdown* and *Bring Me Back*; having met Tim one day in Oundle, she was touched by his 'inspirational' story and decided to lend her support to his fundraising mission to help find a cure for Parkinson's. Tim is not only set to complete the walking challenge this August. Since the launch of the event in February, he has tirelessly planned and executed a series of additional events and fundraising initiatives. The launch party saw funds raised by a successful raffle and auction, while a wine-tasting event, tennis club quiz night and the Oundle Classic Bike Rally are all planned to raise

more funds and awareness for CPT. The Hunstanton Tennis Week, Britain's biggest open tournament, has also agreed to adopt Tim's walk for their charitable cause for this year. Tim's friend Keith has also provided an incredible £15,000 in match funding though his Runcorn based company Axtex.

Congham Hall hotel in rural Norfolk, set within 30 acres of parkland and gardens, will kindly host a reception after the walk to celebrate Tim's incredible achievement, at which he will present his cheque to CPT.

Helen Matthews, Deputy CEO of CPT, said: "Fundraising support is absolutely critical for the charity to enable us to achieve our goal. We aim to cure Parkinson's and the only way we will do this is through the help of all our supporters – it's as simple as that!"

Around 145,000 people in the UK are living with Parkinson's and it's predicted that 1 in 37 people will receive a diagnosis of Parkinson's in their lifetime. The Cure Parkinson's Trust funds innovative research which is dedicated to finding new treatments that can slow, stop or reverse Parkinson's. Tim's fundraising page can be found here: <https://www.justgiving.com/fundraising/tim-daber>

Your annual canvass form is on its way

East Northamptonshire residents are being asked to look out for a form checking who is registered to vote at their address.

The Household Enquiry Form (HEF) will come from East Northamptonshire Council (ENC) and goes to every home in the district. It's addressed to the occupier and will contain the details of all those in the household who are registered to vote. Residents are being asked to confirm that these details are correct.

You can confirm the details are correct in less than five minutes by going online or texting. Alternatively, you can confirm by telephone or post.

If the details on the form are wrong, for example, someone has moved away or moved in, you need to let ENC know by either going online or completing the form and returning it by post.

The quickest and cheapest way to reply is online. Like last year, pre-paid envelopes will not be included with the forms.

The HEF is vital for local

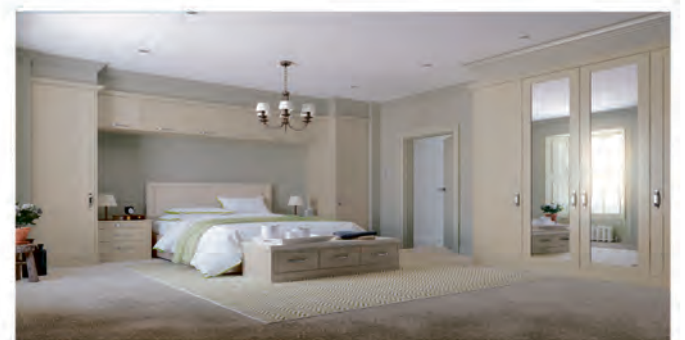
authorities to keep their electoral registers up to date. Not being registered can affect your applications for loans, mortgages and even mobile phone contracts. You will also lose the right to have your say at the ballot box.

The requested information is required by law. Not responding or providing false information on the form can result in a £1,000 fine.

A canvasser will visit the homes of residents who do not reply to collect information on the doorstep from the end of September.

Steven North, Leader of East Northamptonshire Council said: "We urge residents not to ignore the letter when it comes through their door as the annual canvass is an essential part of local democracy. So avoid a knock on the door when you're about to enjoy your evening meal and reply to it straight away."

For more information about the electoral register visit www.gov.uk/electoral-register/overview



Designed by Experts,
Fitted by Craftsmen

25-27 Church Street, Rushden,
NN10 9YU

Find us on 
facebook.com/petercrispltd

PeterCrisp

Design Studio

01933 356 424

www.petercrisp.co.uk

Thursday 30th August

Tiddlers Group for 0-3 year olds
Thrapston Baptist Church
NO Tiddlers this week – Summer break.

Friday 31st August

Fusion for 7-11 year olds
Thrapston Baptist Church
NO Fusion this week – Summer break.

Saturday 1st September

Stanwick Glorun
Stanwick Hall NN9 6QE
6pm for 7.45pm start
£8 for attached runners £10 for unattached runners, Les Marchant email andorrapenguin@gmail.com
Twilight 5k run in aid of charities.

Table Top Sale

St Mary's Church Hall Rushden
10am-12noon
Tables £6 each, entrance fee 50p, refreshments on sale.
Edna Wadsworth 01933 357253.
Proceeds to Church Mission Fund and Recovery House Rushden.

Sunday 2nd September Morning Service

Thrapston Baptist Church
10.30am
Preacher: Mat Hussain
Being Truly Free
Col. 2:8-15

Whitefriars Church – Morning Worship led by The Well Missional Community

Whitefriars Primary School, Boughton Drive, Rushden NN10 9HX
10.15am
Chris Youngman 01933 551769
An informal church service open to all.

Wedding Fair

Community Centre, Fettleline Rd, Irthlingborough NN9 5XF
11.15am-2.30pm, free admission, Irthlingborough Town Council 01933 650866. Come along to meet a wide range of wedding suppliers to help plan your special day.

Higham Ferrers Footpath Group

Saffron Road car park Higham Ferrers for car sharing
9.15am, free, 07981049389.
5.5 mile walk from St Ives.

Flowers for a Country Wedding

Glaphthorn Church
2pm-4.30pm. Flowers for a country wedding in the church and homemade teas in the Village Hall.

Thursday 6th September Tiddlers Group for 0-3 year olds

Thrapston Baptist Church
9.30am-11am. Friendly and welcoming with lots of toys and play equipment for the little ones to enjoy. £1 per carer – as many toddlers as you like!

Friday 7th September

Fusion for 7 to 11 year olds
Thrapston Baptist Church
6.30pm-8pm. Lively and fun group with games, songs and bible based illustrations.

Launch of Sparklers 0-5s Toddler Group

The Bridge Community Office at Whitefriars Primary School, Boughton Drive, Rushden NN10 9HX
9am-11am, £1 per family, Emma Croxon 07957 080074. Organised by Whitefriars Church and providing a safe and friendly place for you and your children.

Whitefriars Church Retireds' Group – a Talk by Rev Chris Youngman

The Bridge Community Office at Whitefriars Primary School, Boughton Drive, Rushden NN10 9HX
1.30pm-3pm, Celia Underwood 01933 676989. A friendly group to which all of retirement age are welcome.

Saturday 8th September Thrapston Community Garage Sale

Thrapston
9am-1pm, £5 registration, 01832 730019. Garages all over will be selling goods. Maps £1 from Plaza, Thrapston 8.30am-10am on the day.

Book signing – The Green Roasting Tin: Vegan and Vegetarian One Dish Dinners

Oundle Bookshop
10.30am-12.30pm. Old Oundelian Rukmini Iyer will be signing copies of her book The Green Roasting Tin.

Sunday 9th September Elton Boat Club Open Day

Warmington Mill
12noon-5pm, free admission and parking. Paul Weetman p.weetman@bopenworld.com. Music from Wansford Ukulele Folk, boat trips, refreshments, barbecue, raffle, tombola and games.

Concert by Rutland Wind Ensemble: 'Music for a Sunday Afternoon'

St Rumbald's Church, Stoke Doyle
3pm, £10, tickets from Liz Doherty on emdoherty@sky.com or 01832 273525. A varied programme of music in aid of church funds (refreshments included).

Whitefriars Church Silver Service

The Bridge Community Office at Whitefriars Junior School, Boughton Drive, Rushden NN10 9HX
10.30am, Melvyn Hunter 01933 222910. A traditional church service open to anyone of any age.

Whitefriars Café Church

Whitefriars Primary School, Boughton Drive, Rushden NN10 9HX
10.15am, free admission, Simon King 01933 356871. A chance to eat, chat, read and listen and to explore the Bible together.

Whitefriars Church, Rushden, Countryside Walk – 'The importance of Milton Ernest'

Meet in the car park at Milton Ernest Garden Centre, MK44 1SH
10.30am, Andrew Presland 01933 316927. A walk of just over three miles in and area Milton Ernest.

Communion Service

Thrapston Baptist Church
10.30am
Preacher: Mat Hussain
Where is our focus?
Col. 3:1-4

By Appointment Counselling & Listening Service

No 1 St Osyth's Lane, Oundle, Northants PE8 4BG
Free service, Marilyn 07936 015965

Housing, Benefits and Employment Advice

No 1 St Osyth's Lane, Oundle, Northants PE8 4BG
01832 770010/
office@oundlebaptist.org.uk

Half-Term

All-age Touch Typing Club
Mon-Fri, 9.30am-10.30am, learn or refresh skills, £15 course intro with coffee. Diane Gifford 07432 123438

Every Monday

Stanwick Handbell Ringers Group
The Stanwick Village Hall
7pm-9pm, 01933 623855, check out our website for more details. Everyone welcome, come and have a go.

Tai Chi

Stanwick Village Hall
7pm-8pm, £6, Robert 07771 333 369
Learn Tai Chi the ancient Chinese martial and health art for all adults.

Baggypants Yoga Class

Masonic Hall, Wellingborough Road, Rushden
8.30am-9.30am, £5 per class, 07873 743256/carole.wyatt@virginmedia.com

Islip Ladies Choir

Thrapston Church Hall
2pm-3.30pm, Barbara 01536 394431

Yoga Classes

Denford Village Hall
9am-10am, £4 per session
Anita Hackney 01832 733274

Titchmarsh Folk Dance Club

The Club Room, High Street, Titchmarsh NN14 3DF
8pm-10pm, £1 inc tea/coffee,

Kev Prigmore 01536 514023/
titchmarshfdc@gmail.com

Oundle Ladies Running Group

Oundle pool car park
6.45pm, Jane Walker 01832 272898/
janewalkercakes@icloud.com

Baggypants Yoga

Masonic Hall,
Wellingborough Road, Rushden
10am-11am, £5 per session,
01933 382837/07873 743256/
carole.wyatt@virginmedia.com

Spanish Tuition

The Old Town Hall,
Market Place, Oundle
9am-8pm, £25 per class, 01832 776336/info@antlerlanguages.co.uk

Every Monday from 4th June Gentle Dru Yoga (for 6 weeks)

Stanwick Lakes Visitor Centre
10.15am-11.30am, £45 for 6 weeks (inc parking) Diane.eardley.me.com/07921 855097. Suitable for all ages/abilities. Great for physical, mental and emotional health and wellbeing.

Every Monday (term time) Praise and Play

St James' Church Thrapston
1.30-2.45pm, refreshments available
Anita 735443

Aqua Aerobic Classes

Oundle School Swimming Pool,
Milton Road, Oundle
8.45-9.30am, £25 for 5 sessions
01832 277208/277195

Every Monday, Friday & Saturday (term time) Otters Swim School Lessons

Oundle School Swimming Pool,
Milton Road, Oundle
Mon 3.55pm-6.10pm, Fri 3.55pm-6.10pm, Sat 8.30am-12noon, block booked in advance (£5.50 per lesson) 01832 277208/277195

1st Monday of the month Oundle Wives Group

Methodist Church Hall, Oundle
7.45pm, £3 including refreshments and raffle. 01832 272178

Oundle Wives

Methodist Church, Oundle
7.45pm, £3 refreshments/raffle
01832 272178

Oundle & District Royal British Legion Meeting

The Talbot Hotel, Oundle
7pm, Les Starks 01832 270073

Finedon Irthlingborough & District Branch Royal British Legion Branch Meeting

Finedon Bowls Club
7.30pm, Peter Eames 07434 328237

1st & 3rd Monday of the month Oundle Rotary

The Ship Inn, West Street, Oundle PE8 4EF
6.15pm, Jane Grant 07712 933574.
Bring your skills, experience, enthusiasm, give something back to your community.

Every 2nd Monday Thrapston & District Royal British Legion Branch Meeting

Thrapston Town Council Centre, 77 High Street, Thrapston
7.30pm, 07876 716 478, ibymes@britishlegion.org.uk

50+ Adventure Club

For further information
01536 505548/www.fiftyplusnorthantsadventureclub.org.uk

Royal British Legion Rushden Branch Monthly Meeting

Rushden Football & Social Club, Hayden Road, Rushden
7.15pm, annual fee £17
Jake Baker 07525 441267

3rd Monday of the month Higham Ladies Group

Adult School, Westfield Terrace Higham Ferrers NN10 8BB
2pm-4pm, 01933 387073
Make some new friends and have fun. Interesting speakers. Supported by East Northamptonshire Council.



3rd Monday of the month (not Dec) Oundle Munch Club

Oundle Primary School
Come for a roast lunch and pudding
£4, call 01832 275353 to book.

2nd & 4th Monday of the month StitChat

No 1 St Osyth's Lane, Oundle
1.30pm-3.30pm, 01832 770010/
office@oundlebaptist.org.uk

Monday once a month Woodturning Club

Hardwick Village, nr Wellingborough
NN9 5AL
7-10pm, Paul Lawman 01933 674260

Every Monday, Tuesday & Thursday Yoga for Health and Energy with Jenni Levine

Wollaston Road, Irchester NN29 7DA
6.45pm (Mon), 9.45am (Tue), 6.45pm (Thu), £6, jenni.levine@hotmail.co.uk or 0750865643851

Every Monday & Thursday Oundle Bridge Club

Fletton House, Fletton Way, Oundle PE8 4JA
7pm start, 01832 273044

Every Tuesday Pensioners Club

Rushden Hall
2pm-4pm, Secretary David Robinson 01933 313729/07391 562772.
Speakers, bingo and whist, annual Christmas dinner. Also coach outings. All welcome.

Phoenix Gaming Club (Age 12 +)

The Rushden Scouts Hall, Brooke Close behind Orbit Tyres (Skinners Lane, Rushden NN10 OXH)
7pm-11pm, membership £5pa, Aron 07739 563657/
aron.phoenix@virginmedia.com

Art Classes (10 weeks)

Knuston Hall, Knuston
7pm-9pm, 10 lessons £100, Jamie 07899 676769

East Northants Classic Motorcycle Club

New Inn Public House, Wymington
Meet around 7.30pm

Sling Walk

11am, first Tuesday of the month there is Sling Library at 10am prior to the walk. Second Tuesday meet at Rushden CC Hayway instead of Higham Ferrers. 01933 410112

Rushden Mission Training Band

Mission Church, Wellingborough Road, Rushden
7.30pm-8.45pm, Alan Richardson 01933 355302

Short Mat Bowls

Saxon Hall, Raunds
1.45pm-4pm, £3, 01933 624545

Yoga Class

Whitefriars Infant School, Boughton Drive, Rushden
7.15pm-8.15pm, £5 per session, Carole 07873 743256/
carole.wyatt@virginmedia.com

Ringstead's Jolly Good Company

Ringstead Shared Church
10am-11am, £4
Music & Movement for over-55s.

Slimming World

Oundle Rugby Club, Occupation Rd
5.30pm and 7.30pm, Nikki 07725 617085. Weekly fee applies. Have fun, make friends and lose weight.

Squidgelets Baby & Toddler Group

Islip Pavilion, Toll Bar Road, Islip
9am-11am, £2 per child, 50p each additional child. Find us on facebook "Squidgelets" or call 07392 756391
Squidgelets is a stay and play session for under 5's and their parent/carers.

Every Tuesday (term time) Toddlers' Drop In

No 1 St Osyth's Lane, Oundle
9.15am-11.30am, free, 01832 770010/
office@oundlebaptist.org.uk

1st Tuesday of every month Great Companions (singles 55+)

Rushden Bowls Club, Northampton Road
7-9pm, yearly membership £6
Pat Bazeley 07931 964360

2nd Tuesday of the month Woodford WI Meeting

Woodford Sports and Social Club
7.30pm, Lynn Sortwell 01832 732740

Higham Ferrers Guided Tour

Groups of 6 minimum. Trained guides. Tea & cakes, optional. 01933 411191

Nene Valley Ladies

The Full Gospel Church, Rushden
7.30pm, 01933 355478.
Speakers, entertainment and outings.

3rd Tuesday of the month Rushden and District Stamp Club

Park Road Baptist Church Hall, Rushden NN10 0RG
7.30pm, Malcolm Whitehead 01933 350646.

Every Tuesday & Thursday Health Walks Stanwick Lakes

10am-11am, free, car park charges 01933 625522/
www.stanwicklakes.org.uk

Ladies Crochet Group

Irthlingborough
2pm-4pm, £10 per session
Contact Ros 07722593637

Every Tuesday, Thursday & Friday Partner Whist Drive

Rowlett Close, Higham Ferrers (Tuesday & Friday), Windmill Club, Rushden (Thursday). 7.30pm, £2, 01933 313714

Every Tuesday & Saturday Coffee Mornings

St James Church, Thrapston
10am-12noon, 01832 730019

Last Tuesday of the month Tea with Friends

St Mary's Church, Ringstead
2pm-4pm, catch up with old friends and to make new ones. Donations to church funds and charities.

Every Wednesday Tai Chi

Chelveston Village Hall
2pm-3pm, £5, Robert 07771 333369
Learn Tai Chi the ancient Chinese martial and health art for all adults.

New Yoga Class

Masonic Hall
11.20am-12.20pm, £5 a class, 07873743256 or carole.wyatt@virginmedia.com for starting date.

Yoga Classes

Masonic Hall, Rushden
1pm-2.30pm, Daisy 01536 724113/
www.awakenwithyoga.co.uk

Ladies Archery – Pemberton Maid Marions

Pemberton Centre, Rushden
NN10 9YP
Diane 01933 314032/
Nicki 01933 395913

Dog Training, Socialisation and Ringcraft

Halefield, Woodnewton, nr Oundle
Classes from 6.45pm,
01832 293432/oundledogs@aol.com/
www.oundledogs.co.uk

Rainbow Cafe for Tots

Stanwick Lakes
10.30am-12noon and 1.30pm (term time only), £2.50 per child – car park charges apply. 01933 625522/
www.stanwicklakes.org.uk

Club Night Apethorpe Tennis Club

From 6pm

Returners to Work

No.1 St. Osyth's Lane
10am-12noon, 01832 770011

Continued on page 12

Continued from page 11

Art & Craft Class

Oundle Rural Mind, 1 Herne Park, East Road, Oundle PE8 4BZ
Irene Issitt 01832 275020

Inflatable Fun Session

Oundle School Swimming Pool, Milton Road, Oundle
5pm-6pm (May vary during school holidays), £3 adult & £2.25 child
01832 277208/277195

Cambridge First Certificate in English

The Old Town Hall, Market Place, Oundle
9.30am-12.30pm, £25pw, 01832 776336/info@antlerlanguages.co.uk

French Tuition

The Old Town Hall
From 6pm, £25 per week, 01832 776336/info@antlerlanguages.co.uk

Jelly Babes Toddler Group

Rushden Independent Wesleyan Church
9.15am

Playheroes Mixed Heroes 0-4 years

Highgate Hall, Elton
9.30am-10.30am, £6 one off session
£16 for 3 sessions £29 for 6 sessions (full-term). playheroesinfo@gmail.com /07380204029. Weekly themed, learn through play, run by 2 teachers.

Equanimity Yoga Classes

Oundle Rugby Club
5.45pm & 7pm, vicky@eqyoga.co.uk/07921238701. Hatha Yoga Classes, suitable for all, equipment provided.

Every Wednesday (term time)

Community ICT Classes
Needham Building, Oundle School SciTec, Glapthorn Road, Oundle
2.30pm-4pm, 01832 277267 to enrol.

Tiny Tots

Oundle C of E Primary School, Glapthorn Road
1.45pm

660 Club (Age 60+)

Two Acre Club, off Milton Road
2.15pm-3.45pm. Afternoon tea and entertainment by Oundle pupils.

Allegra Singers – Three-part Ladies Choir

Music room, Sports Pavilion, Islip
7.30-9.30pm, £3 per session, Veronica
01832 732611/07753 472225

Every alternate Wednesday Psychic & Spiritual Awareness Development Group

Rushden
1pm-3pm or 7.30pm-9.30pm, £7 per session, Renalta Hall 07712 740495

1st Wednesday of the month

Raunds Coffee Afternoon
Saxon Hall, Raunds
1.30pm-3pm, £1 entry (includes refreshments). Call 01933 622087 to reserve your seat. Meet new friends over a cuppa & entertainment.

Raunds Ladies Group

The Saxon Hall, Raunds
8pm-10pm, Visitors £3.50

Weekly Wildlife Wanders

Meet at Nene Wetlands Visitor Centre
10.30am, £3 per person, katie.king@wildlifebcn.org/01933 779587.
Informal 90-minute guided walk. (Call Visitor Centre to confirm walk is taking place.)

Home Instead Companionship Café

M&S Café (Rushden Lakes)
1pm-3pm (times will change during school holidays), Marie 01933 678775. No booking needed.

1st & 3rd Wednesday of the month

Thrapston Country Dancers
St Johns Ambulance Hall
2pm-3.30pm, G Hearnden 01933 622827/ghearnden@tiscali.co.uk

2nd Wednesday of the month

Coffee Morning
Raunds Methodist Church
10am-12noon, 01933 383378

2nd & 4th Wednesday of the month

Northants Model Makers
Windmill Primary School, Raunds NN9 6LA
Main meeting starts 7.30ish. First couple free. Bob Humpage 07960 054405/modelmaker@tiscali.co.uk

3rd Wednesday of the month

Raunds Film Afternoon
Saxon Hall, Raunds
2pm, £1 includes refreshments. Call 01933 622087 to reserve your seat. We show a great film each month, watch press for details.

Wellingborough Flower Arrangement Society

St Mary's Church Hall, Knox Road, Wellingborough NN8 1HU
7.30pm, £5, Chairman 01933 222326/Secretary 01604 870275

Higham and Rushden U3A

Pemberton Centre, Rushden
2pm, visitors welcome (£3 charge)
www.highamandrushdenu3a.org.uk

British Korean Veterans

The Old Grammarians Club, Oxford Street, Wellingborough
11.45am, Mary Morby 01933 312476/e.m.m@btinternet.com

Raunds & Dist' British Legion

Conservative Club, Raunds

8pm, 01933 625333 for more details. You do NOT have to be ex-services.

4th Wednesday of the month

Rushden Pensioners Forum
St Peters Church Hall, Midland Road, Rushden
2pm-4pm, Mary Morby 01933 312476 or e.m.m@btinternet.com

Wednesday & Thursday

Free Counselling

No.1 St. Osyth's Lane Oundle
By appointment 0793 6015965

Every Wednesday & Thursday (July and August)

Elton Hall and Gardens open
Elton PE8 6SH
2pm-5pm, admission £10/£7.50
Gardens only, 01832 280468/events@eltonhall.com. Guided tours at regular intervals during the afternoon.

Wednesday & Saturday

East Northants Athletics Club – 'Getting Kids Into Athletics'

The Ferrers School, Higham Ferrers
Wed 6-7pm, Sat 9-10am,
£4 per session or Wed & Sat £7
Graham Bufton 07788 698883/grahambufton.enaa@gmail.com

Wednesday & Sunday

Ferrers & Rushden Tennis Club

Higham Ferrers Recreation Ground, off Wharf Road
10am-12noon (Sun); 6.30pm-8.30pm (Wed). Per club session £2 adults/£1 junior (10+), Steve Roberts
01933 461028/07960 846092

Every Thursday

Yoga Class

Whitefriars Infant School, Rushden
7pm-8pm, £5 per class, Carole
07873743256. Suitable for beginners.

Italian Classes

Antler Languages Ltd. The Old Town Hall, Market Place, Oundle
7.30pm-9.30pm, £25 per class, info@antlerlanguages.co.uk
Small classes or private tuition. Professionally qualified teacher.

Tai Chi for Beginners & Improvers

All Saints Church Hall, Midland Road, Wellingborough
10am-11am, £6, dominicrushman@live.co.uk. Improve your strength and balance. Suitable for all.

Rushden Folk Dance Club

St Mary's Church Hall, Rushden
8-10pm, first visit free, £2 thereafter
Val 01933 387327

The Silver Fox Woodturning Club

Dale End Scout Headquarters, Croyland Road, Wellingborough
10am-1pm, £2 all members
Debbie 01604 751019

Move to Health

No 1 St Osyth's Lane, Oundle
2.15pm-3pm, 01832 770010/office@oundlebaptist.org.uk

Thursday Drop-In

No 1 St Osyth's Lane, Oundle
10am-2pm, 01832 770010/office@oundlebaptist.org.uk

Little Ducklings Pre-School Stay & Play 'Tea & Tots' Sessions

1.30pm-3pm, £1.50 per family.
01832 358085

Olde and Sequence Dancing

Woodford Sports and Social Club
7.30pm-9.30pm, £2, Dorothy 01832 732534 or Keith 01832 731896

Equanimity Yoga Classes

Thrapston Plaza
6.10pm & 7.15pm, 07921238701/vicky@eqyoga.co.uk. Hatha Yoga, suitable for all, equipment provided.

Every Thursday (term time)

Music Makers

Titchmarsh Pavilion
9.30am-10.15am, Joan Strong Centre, Oundle, 11.15am-12noon, Stanwick Village Hall, 2pm-2.45pm, £4 per child, £2 for siblings, Naomi Cooper on musicmakersnorthants@gmail.com

Little Treasures Tots Group

St Laurence's Church, Stanwick
9.30am-11am, donations to cover costs, Nicki 01933 625658

Community Art Classes

Oundle School Art Department
7.30pm-8.30pm, free classes for people with a disability.

Coffee/tea and biscuits

in the Bede House

St Mary's Church, Higham Ferrers
10am-12noon, no charge just a donation to cover costs.

Adult & Child Swim Sessions

Oundle School Swimming Pool, Milton Road Oundle
9.15am-9.45am, booked in advance as a block (£4.75 per lesson)
01832 277208/277195

Alternate Thursdays

Fettledine Afternoon Club

Crow Hill Community CTR, Fettledine Road, Irthlingborough NN9 5XF
2pm-4pm, £2 all ages welcome for tea, cake, chat and activities.
Caroline Cross 07527530529

1st Thursday of the month

Royal British Legion Friends & Companionship Support Group
Athletics Club, Newton Rd, Rushden
10am-12noon. Pop in for a chat.

3rd Thursday of the month

Painting Class with Nick Baldwin

Chelveston Village Hall
10am-4pm, £17 per session
Janet Lowe 01933 389647

Ise & Nene Valley Turners

Cranford Village Hall, Grafton Road, Cranford NN14 4JE
7pm, members free, visitors £5, Peter Bond 01933 741835/peterjbond@btinternet.com

1st and 3rd Thursday of the month

The Fettledine Afternoon Club

Crow Hill Community Centre, Irthlingborough
2pm-4pm, £2, Caroline Cross
07527530529. Activities, speakers, meals out and more.

Thursday Market Day

No.1 Cafe - Free Drop-In

No.1 St, Osyth's Lane
10am-2pm, 01832 770011

Every Friday

Over 60s Club Bingo

Working Men's Club, Higham Ferrers
2-4pm, 01933 741286

Walk and Chat

Rushden Hall Park, under flagpole
10am, Joe Bailey 01832 742195/jebailey@east-northamptonshire.gov.uk

Music Makers

Nene Centre, Thrapston
12.45-1.30pm & 1.45-2.30pm,

£4 per child, £2 for siblings,
Naomi Cooper 07815 293893/musicmakersnorthants@gmail.com

French Beginners

The Old Town Hall, Market Place, Oundle
6pm-7.30pm, £25 per class, 01832 776336/info@antlerlanguages.co.uk

Every Friday (term time)

Over 60s FREE swim

Oundle School Swimming Pool, Milton Road, Oundle
3pm-3.45pm, 01832 277208/277195

Pre-School Swimming Lessons

Oundle School Swimming Pool, Milton Road, Oundle
1.55-2.25pm & 2.30-3pm, block book in advance (£6.75 per lesson),
01832 277208/277195

Friday Once a Month

Wildlife Trust Little Bugs Club

Nene Wetlands Visitor Centre, Rushden Lakes
10-11.30am, £3 per child (intro rate), booking essential, 01933 779587/viktoria.marta@wildlifebcn.org

1st Friday of the month

(Check before travelling)

Craft Cafe

Stanwick Lakes
10.30am-1pm, modest charge for some materials, car park charges
01933 625522/www.stanwicklakes.org.uk

Oundle Evergreen Club

2.30pm in the Victoria Hall for tea and cakes plus entertainment.
01832 273826/272340

3rd Friday of the month

Raunds Tea Dance

Saxon Hall, Raunds
2pm-4.15pm, £3 (50p for raffle)
Mrs Wicks 01933 312623

U3A Meeting

The Plaza, Cosy Nook, Thrapston NN14 4PS
10am-12noon, £2 (visitors), free for members, includes refreshments. Guest Speakers each month.

Former Carers Group

No 1 St Osyth's Lane, Oundle
PE8 4BG
2pm-3.30pm, free, 01832 770010/office@oundlebaptist.org.uk

3rd Friday of the month

(Check before travelling)

Stanwick Stitches

Stanwick Lakes
10.30am, free, car park charges.
01933 625522 or Pauline on 01933 229817/www.stanwicklakes.org.uk

Every Saturday

Slimming World

Oundle Golf Club, Benefield Road
8.30am, Nikki on 07725 617085. Weekly fee applies. Have fun, make friends and lose weight.

Last Saturday of the Month (not Dec)

Farmers' Market

Market Square, Higham Ferrers
9am-1pm
Danielle@highamferrers-tc.gov.uk

1st Saturday of the month

Coffee Morning

St Mary's Church, Ringstead
10am-12noon, 01933 624262

Thrapston Farmers' Market

Thrapston High Street
9am-1pm, www.thrapstonfarmersmarket.moonfruit.com

2nd Saturday of the month

Coffee 'n' Cakes

Oundle Methodist Church, Drummingwell Lane
10am-12noon, John Hewitson
01832 272209

WE Watch

Stanwick Lakes
01933 625522/wewatchstanwick@hotmail.co.uk

Oundle Farmers' Market

Market Place, Oundle
8am-1.30pm, Oundle Town Council
01832 272055

3rd Saturday of the month

Phoenix Group

Stanwick Lakes
01933 625522/wewatchstanwick@hotmail.co.uk

Messy Church

Rushden Salvation Army, Church Street, Rushden
4pm, George Ellitson 01933 313106

Every Saturday & Sunday

Coffee & cakes/Sunday worship

Rushden Independent Wesleyan Church (Entrance Queen Street)
Saturday coffee & cakes. 10am-11.30am, Sunday worship 10.45am with children's activities 2nd Sunday in the month 4pm.

Every Sunday

Short & Sweet

St Mary's Church Rushden
2-3pm, Sue Merrifield 01933 358218. Worship for people with additional needs followed by tea, cake & crafts.

2 Course Sunday Carvery

Rushden Bowls Club
12noon, £12 per head.
07850 864537 to book.

Sunday Tea

Fotheringhay Village Hall
3pm-5.30pm, £2.50 for tea & cake. Alexandra Mitchell 01832 226440

Morning Worship

Rushden Mission Church, Wellingborough Road
10.45am, Alan 01933 355302

Morning Church Service

Rushden Heritage Chapel Hall, Park Road, Rushden NN10 ORG
10.30am

Church Service

The Heritage Chapel and Halls, Park Road, Rushden NN10 ORW
10.30am, Cheryl 07969 603958/cheze49@gmail.com

Ringstead Shared Church

Service for all (Communion first Sunday each month), 10.30am
Mike Freeman 01933 389796/rbc-rsc@angeladavis.net

1st Sunday of the month

Priceless – for young children and their families

St Laurence's Church, Stanwick
9.30am-10.15am

Every 2nd, 4th & 5th Sunday

Pete's Pack (For children 3+)

St Peter's Church, Newton Bromswold
Bible based activities, 10am-11am
Helen Lines 07917 001924

3rd Sunday of the month

All Age Worship

St Laurence's Church, Stanwick
9.30am

Leisurely, Sociable Strolls

Pub start – if not lunching do not use pub car park. 10am for 10.30am start. Guests £2 or join for year £8. secretary@northamptonshireshamblers.org.uk

4th Sunday of the month and

Bank Holidays (not Nov-Jan)

King's Cliffe Heritage Centre
Bridge Street. (Hanging sign when we're open). Open 2pm-5pm

**Open 7 Days A Week!**

Monday to Saturday: 9.00 to 5.00
 Thursday - Late Night: 9.00 to 8.00
 Sunday: 10.00 to 4.00

6,500 SQ. FEET OF THE LATEST CRAFT & HOBBY SUPPLIES!!

At Rushden, Northants our 6,500 sq. foot warehouse has 1000's of craft, haberdashery & hobby supplies - **all at great prices!** Also, we now **OPEN 7 DAYS A WEEK.**

On the **first Saturday of each month** we hold one of our famous **Big Craft Days**. We have simultaneous craft demonstrations by professional demonstrators which are continuous between 10.00am and 4.00pm. There are lots of **special offers** and **free refreshments**. We open for shopping at 8.30am. Demonstrations start at 10.00am.

Saturday 1st September is Make 'N' Take Day - FREE EVENT!! It's your chance to have-a-go! We supply the materials & tuition, you get to make a project to take home . . .

Make 'N' Take

CHRISTMAS CARD

Imagination Crafts will be helping you to create a beautiful Christmas card using stencils, glitter paste and embellishments.

**CHRISTMAS TREE DECORATION**

Join **Sue** from **DO Crafts** and make a Christmas tree ornament using paint, texture paste & glitter.

FREE EVENT



Both sessions will run concurrently throughout the day from 10.00am – 4.15pm and will last for approximately 30 minutes. All materials are provided. Places will be allocated on a first come, first served basis and need to be booked on arrival at the Craft Warehouse.

Craft workshops

Our Craft Workshops are great value at £5.00 to £70.00 per session!

Unless otherwise stated, this includes refreshments plus all the equipment and materials required for your chosen project.

There are over 50 Workshops to choose from & all are held at the Craft Warehouse in an informal, fun atmosphere.

**NEW WORKSHOP PROGRAM**

To book, check availability or to request a leaflet detailing the dates and content of our workshops please tel: 01933 355530, ask at any Colemans branch or look online at www.colemans-online.co.uk



Unit 6 Brindley Close
 Rushden
 Northants
 NN10 6EN

T: 01933 355530

E: craft@colemansgroup.co.uk

www.colemans-online.co.uk

We offer full disabled access including a passenger lift to our new mezzanine floor



NEW TERM AHEAD!

STUDENT 20% DOUBLE DISCOUNT

Colemans



£1 Savers
 Look out for our **Student Essentials** at just £1.00 each!

Colour Inkjet Printer

- Compact unit with Scanner & Copier Functions

STUDENT SPECIAL!



£29.99

A4 Refill Pad

- 320 page lined pad



Normal Price **£2.49**

STUDENT 20% DOUBLE DISCOUNT
£1.99

Sharpie Markers

- 24 Pens



Normal Price **£19.99**

STUDENT 20% DOUBLE DISCOUNT
£15.99

Punched Pockets

- A4 size, box of 100



1 Box **£2.49**

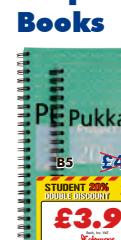
STUDENT 20% DOUBLE DISCOUNT
£1.99

2 Boxes **£3.98**

STUDENT 20% DOUBLE DISCOUNT
£3.19

Project Books

- Spiral-bound lined books



A4 **£5.99**

STUDENT 20% DOUBLE DISCOUNT
£4.79

A5 **£4.99**

STUDENT 20% DOUBLE DISCOUNT
£3.99

Tipp-Ex

- Mouse



Normal Price **£2.49**

STUDENT 20% DOUBLE DISCOUNT
£1.99

Lamy Fountain Pens

- In a choice of colours



Normal Price **£18.90**

STUDENT 20% DOUBLE DISCOUNT
£15.12

£1 Savers

Look out in-store for our **Student Essentials** at just £1.00 each!

**USB Drive**

- 16 GB



Normal Price **£9.99**

STUDENT SPECIAL!

£7.99

Oxford Maths Set

- Limited Edition!



Normal Price **£5.59**

STUDENT 20% DOUBLE DISCOUNT
£4.47

Maths Sets from **£1.83**

Name Tape Kit

- Normal Price



Normal Price **£2.49**

STUDENT 20% DOUBLE DISCOUNT
£1.99

£1.99

Ring Binders

- Normal Price



Normal Price **£1.29**

STUDENT 20% DOUBLE DISCOUNT
£1.03

£1.03

Exercise Books

- A5



Normal Price **£0.99**

STUDENT 20% DOUBLE DISCOUNT
£0.79

£0.79

Ballpoint Pens

- Normal Price



Normal Price **£4.99**

STUDENT 20% DOUBLE DISCOUNT
£3.99

£3.99

Scientific Calculator

- Helix RC2072



For students who are 11+

RRP **£9.99**

STUDENT 20% DOUBLE DISCOUNT
£7.99

£7.99

Pencil Cases

- From



From **£2.99**

STUDENT 20% DOUBLE DISCOUNT
£2.39

£2.39

Cotman Sets

- From



From **£10.99**

STUDENT SPECIALS!

£10.99

Art Studio Set

- 40 pen set

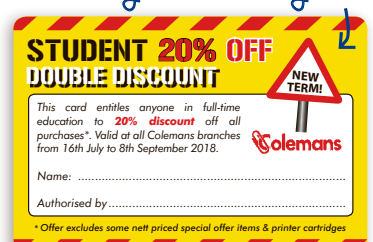


RRP **£45.90**

STUDENT SPECIAL!

£12.99

Don't forget to ask for yours!



Branches at:- **Bedford • Higham Ferrers • Kettering • Market Harborough • Northampton • Oakham • Oundle • Peterborough • Stamford • Towcester • Wellingborough**
 Please see:- www.colemans-online.co.uk for full branch details

All Prices include VAT. *Offer excludes some nett priced special offer items & printer cartridges.

What's On
SUMMER
2018

**CASTLE
THEATRE**
Wellingborough



OPERA BOYS
Sat 1 Sep, 7.30pm
Tickets £18.50

SELL A DOOR
NEW! 12

**GUESS
HOW MUCH
I LOVE YOU**
Based on the book by
Sam McBratney
LIVE ON STAGE

Wed 12 Sep,
1.30pm & 4.30pm
Tickets £12

T★REXTASY
THE 2018 TOUR

Fri 28 Sep, 8pm
Tickets £23.50 (£22.50)

*The West End
Musicals*
— IN CONCERT —
Starring

Lisa Kelsay Jason Lee Steve Shappelle Shani Cantor

Sun 30 Sep, 2.30pm & 6.30pm
Tickets £16 (£13)

Box Office 01933 270 007

castletheatre.co.uk

FREE PARKING

PAY NO BOOKING FEE

Castle Theatre, Wellingborough

@castle_WEL

Regent Wrought Iron Ltd

The Regent Street Wrought Iron Works

180-186 Regent Street, Kettering, Northants NN16 8QH

PHONE 01536 485892

High quality gates and fencing hand made on the premises since 1963



Single gates from £60.00
Side entry from £99.00
Double gates from £120.00



We have 18 styles to choose from. All on show in our showroom. Full fitting & painting service.

Automatic Estate Gates

- Highest quality equipment
- Up to 14' opening
- Flat draped or bow topped
- Fully installed & painted
- **FREE** first year service
- Guaranteed for 2 years
- Full back up & yearly service
- We have been installing automation since 1998
- Full pressure tested and certified to BS 12453



We can automate your existing gates (if suitable) or upgrade old equipment to meet BS 12453 safety regulations



Has your garden wall/fence had it? Replace it with wrought iron!
LASTS A LIFETIME • USUALLY FITTED IN A DAY

BEAT THE BURGLAR – Free security locking bolts fitted to all our side entry gates or full range of mortise locks fitted

Visit our website for our online catalogue www.regentiron.co.uk



ACCOUNTANCY

Jon Essam & Co Ltd

Chartered Accountants

- Self Assessment Tax Returns
- Limited Company services
- VAT & CIS Returns
- New Business Start Ups and advice
- Payroll & Auto-enrolment services
- Sage & Xero specialists
- Free initial consultation

Tel: 01832 730280 Fax: 01832 730281
info@essamca.co.uk www.essamca.co.uk

23 Cottingham Way, Thrapston,
Kettering, Northants, NN14 4PL



FAYREHAVEN ACCOUNTANCY SERVICES CHARTERED CERTIFIED ACCOUNTANTS

4c Stanwick Rd, Higham Ferrers, NN10 8JG
Tel: 01933 312080 / Mobile: 07905730623
E-Mail: neil.perera@accmail.com / neil.perera777@gmail.com

Book Keeping & Accounts Preparation
Self Assessment & CT returns

Please call me to discuss your business needs. Thanks - Neil Perera



CARE HOMES

Rose Cottage Residential Care Home Woodford

For the elderly and dementia

We are a small care home with eight residents only.
All rooms are single en-suite and ground floor.
We provide respite care and day care.
Telephone 01832 735417
www.rosecottagewoodford.co.uk

Follow us on Facebook



HOME IMPROVEMENTS

KitchenDoorSolutions

Replacement doors and kitchen refurbishment

Doors available in solid wood, painted and laminate finishes



Iain Smith

Tel: 01933 311310

Mob: 07583 869741

SPECIALISTS

SINCE 1980

The WOODWORKS

Kitchen service

SPECIALISTS IN ALL ASPECTS OF KITCHEN REFURBISHMENT

Replacement Kitchen doors
Worktops supplied & fitted
Sinks, Taps & Appliances
Wardrobes built & fitted
Made to measure
Bathroom furniture



Update your existing kitchen to give you stunning looks, optimised storage space and increased accessibility

WWW.WOODWORKS-KITCHENS.CO.UK

Family business est 1999

Call now for a free no obligation quote

01933 449239

!!!GET PLASTERED!!!

For all your plastering needs.
No job too small, no fuss, no nonsense!
Reliable and trustworthy service
at the best possible price.
Call Steve for free, friendly
advice or a free quote.

30
years
experience

Qualified
tradesman

07703 720138 • 01933 430051



Debbie Dawson & Son Interior Painters and Decorators

• Free estimates • Over 15 years experience
Tel: 01832 274652 Mobile: 07779 393458

10% DISCOUNT FOR OVER 70's**Ashby's Allsorts**
Home Improvement & Handyman Services

Free Estimates
No Job Too Small
Inside and Outside Work Undertaken
Public Liability Insurance
Quality Work at Competitive Prices

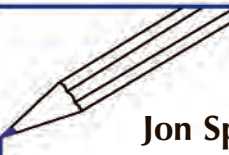
Tel: 01832 771020
Mobile: 07584 673767
Email: contact@ashbys-allsorts.co.uk
www.ashbys-allsorts.co.uk

Based in Thrapston, we service a radius of 30ish miles

Simon Vale**Painter & Decorator**

High quality • Competitive prices
Free estimates

07568 587367 or 01933 228671



Jon Spencer
Technical Drawing Services
Plans drawn for planning and building regulation applications
01933 316044

MP BUILDER
Home Improvements and Maintenance

Reliable, professional and trustworthy

Extensions • Bathrooms/Wetrooms • Plumbing
Kitchens • UPVC Windows & Doors • Carpentry
Roofing & Guttering • Painting & Decorating

Free Competitive Quotes

Tel: 01933 353508 • Mob: 07710 337071
Email: buildwithmp@gmail.com
Web: www.mpbuilder.co.uk

ALAN TAYLOR
For your local plastering

Boarding, Covering, Rendering
All aspects of plastering. Enquiries welcome.
Call Alan for a free quotation or advice on
01933 430098 or 07977 926717

CONSERVATORIES

EG VICTORIAN 3500 BY 3500
FULLY INSTALLED INCLUDING
ALL BRICKWORK AND VAT

£7250

ALL OTHER DESIGNS AND SIZES AVAILABLE
UNBEATABLE PRICES
PHONE NICK ALLINGTON ON
(01832) 734070
WWW.CONSERVATORIESBUILT.CO.UK

**HOME SERVICES***Plumber — local & fast!***RGJ PLUMBING AND HEATING***Plumbing*

- Full bathroom installation (inc carpentry & tiling)
- Burst pipes & leaks
- Toilet repair/replace
- Taps, sinks repair/replace
- Showers repair/replace & pumps

Heating

- Full central heating installation
- Boiler servicing/breakdowns
- Landlord safety certificates
- Power flushing
- Radiators & valves
- Pumps & cylinders




No call-out charge!
City & Guilds Qualified
All work guaranteed



01933 588005 or 07921 469471



PGR Plumbing & Heating
Tel: 01933 698116
24 Hr Emergency Service
Email: pgrplumbing@btinternet.com
Web: www.pgrplumbing.co.uk
Specialists in
Gas Servicing & Maintenance
Landlords Gas Safety Certificates
Central Heating Powerflushing
Household Plumbing & Drainage



A.SEATON ELECTRICAL LTD
Part P Registered
• Rewires, fuse board replacements
• Fault finding, extra sockets & lights
• Testing, inspection & certification
• No job too small, free estimates given
Email: seatonsparky@gmail.com
T: 01933 778504 M: 07952 249885



CLEAR THE JUNK
The Rose Clearance Service
Full - Part - Single Items.
Fully Registered and Insured. Est 30 years.
www.rose-clearance-services.co.uk
Tel: 07761 248266/07443 605859



Easyflow Plumbing
Plumbing & Heating Services
Bathroom Installations
Heating Systems
General Household Plumbing
Tel: 07840 254 025 or 01604 946896
roberttradford77@gmail.com



10% OFF
On presentation of this advert.
Valid until 1/9/2018
DC Heating
SAFE IN OUR HANDS
YOUR LOCAL PROFESSIONAL HEATING ENGINEERS YOU CAN TRUST
REPAIRS • SERVICING • INSTALLATIONS
Phone today for a free quotation on
Tel: 01933 392 719
www.dcheatingengineers.co.uk

DONNO R G TV/AERIAL SERVICES
Est 1981

TV/DVD repairs, servicing at your home if possible.
Full installation service available. Freesat and Freeview digital aerials supplied and installed from £80. All work guaranteed.
No call out charge locally. Free estimates on repairs.

Tel: 01933 356680**ENSIGN GAS ENGINEERS**

GAS FIRES, GAS COOKERS
INSTALLATION, SERVICE AND REPAIR

Recommended service agent for:
Focal Point Fires, Superior Fires and Eco Fires

NO CALL OUT CHARGE**Tel: 01933 318327****PLUMBER**

All plumbing work undertaken - No call out charge

Toilet repairs - Dripping overflows - Leaks and bursts
Garden taps installed - Tap repairs and replacements
Radiators supplied and fitted

20 years' experience

Call Tim 01832 358248 or 07957 550660


COSTUME JEWELLERY AND ALL UNWANTED JEWELLERY
BROKEN OR PERFECT BOUGHT.
ALSO OLD WATCHES AND COINS.
ANY QUANTITY. JILL WILDING 01832 737803.



HANDY HERBERTS
Home & Garden Maintenance
All garden and exterior maintenance work undertaken including professional gutter cleaning, graveling, fencing, patios fitted, external painting and hedge trimming.
01933 563365 or 07725 225214
handyherberts@yahoo.co.uk

**PET SERVICES**


Country Companions Pet Services
Services include:
Doggy Day Care
Dog Walking
Puppy Visits
Pet Sitting
Cat Visits
Home Boarding
Contact Sarah on:
07766 523292
www.ccpetservices.co.uk
sarah@ccpetservices.co.uk

**PUBLIC NOTICES****NORTHAMPTONSHIRE COUNTY COUNCIL****ROAD TRAFFIC REGULATION ACT 1984****THE NORTHAMPTONSHIRE COUNTY COUNCIL (LOWER BENEFIELD / LOWICK / STANWICK) (30 MPH SPEED LIMIT) ORDER 2018**

NOTICE IS HEREBY GIVEN that Northamptonshire County Council have made an Order under Sections 82, 83, 84 and Schedule 9 of the Road Traffic Regulation Act 1984 ("the Act") to prohibit any motor vehicle from travelling at a speed exceeding 30 mph along those lengths of roads as specified in the Schedule below.

A COPY of the Order may be inspected at Northamptonshire Highways, One Angel Square, Angel Street, Northampton, NN1 1ED during normal office hours.

If you wish to question the validity of the Order or of any provisions contained in it on the grounds that it is not within the powers conferred by the Road Traffic Regulation Act 1984, or on the grounds that any requirement of that Act, or of any instrument made under it has not been complied with in relation to the Order, you may, within six weeks from the date of this Notice apply to the High Court for this purpose.

The Order will become effective on the 27th August 2018.

Dated this 25th day of August 2018
DEBBIE CARTER-HUGHES,
Head of Property & Planning Law
PKG / 1638

SCHEDULE

1. **Causin Way, Lower Benefield** – between a point 395 metres west of its junction with the A427 and a point 458 metres west of that junction.
2. **Main Street, Lowick** – between its junction with Aldwincle Road and a point 105 metres south of that junction.
3. **Higham Road, Stanwick** – between a point 120 metres south of its junction with High Street and a point 215 metres south of that junction.

NORTHAMPTONSHIRE COUNTY COUNCIL**ROAD TRAFFIC REGULATION ACT 1984****THE NORTHAMPTONSHIRE COUNTY COUNCIL (VARIOUS ROADS RUSHDEN, EAST NORTHANTS DISTRICT)****(40MPH SPEED LIMIT) (CONSOLIDATION) ORDER 2018**

NOTICE IS HEREBY GIVEN that on 16th August 2018, Northamptonshire County Council, in exercise of their powers under section 84 of the Road Traffic Regulation Act 1984 ("the Act"), have made the above Order ("the new Order") which consolidates the Orders specified in the Schedule below.

The effect of the new Order will be to revoke the Orders specified in the Schedule below, but the speed limits specified in those Orders will remain in force and have the same effect by virtue of the new Order.

A copy of the new Order, which comes into effect on 27th August 2018, may be examined at One Angel Square, Angel Street, Northampton, NN1 1ED.

If you wish to question the validity of the Order or of any provisions contained in it on the grounds that any requirement of the Act, or of any instrument made under it has not been complied with in relation to the Order you may, within six weeks from the date of this Notice, apply to the High Court for this purpose.

Dated this 25th day of August 2018
DEBBIE CARTER-HUGHES, Head of Property & Planning Law
PKG/1770

SCHEDULE

The Northamptonshire County Council (Avenue Road and Newton Road, Rushden) (40mph speed limit) Order, 1990.

The A6 Trunk Road (Rushden, Northamptonshire) (40 Miles Per Hour Speed Limit) Order 1999

The A6 Trunk Road (Rushden – Higham Ferrers Bypass, Northamptonshire) (40 Miles Per Hour Speed Limit) Order 2003

NORTHAMPTONSHIRE COUNTY COUNCIL**ROAD TRAFFIC REGULATION ACT 1984 - SECTION 14****THE NORTHAMPTONSHIRE COUNTY COUNCIL (PUBLIC BRIDLEWAY FN4 (PART) – PARISH OF WOODFORD CUM MEMBRIS)****(TEMPORARY CLOSURE) ORDER 2018**

NOTICE IS HEREBY GIVEN that Northamptonshire County Council have made an Order the effect of which is to prohibit all pedestrians, equestrians and cyclists from proceeding along that length of Public Bridleway FN4 in the Parish of Woodford Cum Membris as specified below. Private access to land or premises adjacent to the said length of bridleway is unaffected.

RIGHT OF WAY TO WHICH RESTRICTION APPLIES:
The existing route to be closed begins at National Grid Reference ('NGR') SP5402 5306. The route travels generally north east for approximately 210 metres to point B at NGR SP5405 5327. The route is shown by a solid black line between points A – B.

REASONS FOR RESTRICTION: The restriction is required due to construction works.

PERIOD OF CLOSURE: The Order will come into effect on 1st September 2018 and will continue in force for a period of six months. An application may be made for the approval of the Secretary of State for Transport for this Order to be extended if this proves necessary. However, the restriction specified will have effect only at such times and to such extent as is indicated by the display of notices.

ALTERNATIVE ROUTES: The alternative route starts at point A at NGR SP5402 5306. The route travels generally west along Byfield Road for approximately 65 metres to point C at NGR SP5396 5308. The route then travels north east along Grant Hill Way for approximately 213 metres to point B at NGR SP5405 5327. The alternative route is shown by a broken black line between points A – C – B.

Dated this 25th day of August 2018
DEBBIE CARTER-HUGHES, Head of Property & Planning Law
PKG/ROW/321

If you require any further information please call Tommy Buggins on 01295 201050.

**REMOVALS****David Mallett**
REMOVALS & GENERAL HAULAGEFor a **FREE** quotation call**Mob: 0788 996 8064****Tel: 01832 731570****Local Friendly Service**

To advertise in
Nene Valley News call
01522 513515

East Northants Snooker League

Week 14 of the ENSL Summer League. So far, 41 matches have been played, 246 frames have been contested and thousands of balls have been potted. But, it now comes down to the final four weeks to see which team will prevail as the 2018 Summer League Champions. Six of the eight teams are still in with a real chance.

Higham SAS took on 8th place Coopers D. Higham's Adam Underwood and Cooper's Justin White got play underway. Adam found some good form and won both frames with balls to spare. Higham captain Pete Beerten won the next frame against fellow captain Aaron Whittemore. The final score was 5-1 to Higham SAS, which boosts them up to 3rd place from 6th.

Windmill C hosted Coopers Troopers. Windmill's Tony Jupp played really well to win his two frames and benefitted from a favourable run of the balls much to his opponent Sean Britchford's frustration. James Rawlins and Dean Coombes then shared the next two frames in a rather low-scoring affair.

The big clash of the night was between current leaders Windmill Warriors and Higham Mecca who have won their last four matches. Both teams were expecting a very tough match. Paul Lewis did enough to beat an out-of-sorts Wayne Gardner in

his two frames. Michael Dicks continued his run of good form as he beat Matt Barcock 2-0 also. Matt fought hard to lay snookers but Dixie managed to make multiple escapes and put the conclusive balls. A 6-0 victory for the Warriors that nobody would've predicted. This now gives them a considerable lead over the rest of the teams. Can they hold on for four more weeks?

Warriors take on the Windmill Underdogs next week, Coopers Ball Bashers play Windmill C and Higham Mecca play Coopers Troopers. Coopers D and Higham SAS both have a BYE.

This week's results:

Windmill Warriors 6-0 Higham Mecca
Windmill C 5-1 Coopers Troopers
Higham SAS 5-1 Coopers D
Windmill Underdogs = BYE
Coopers Ball Bashers = BYE



If you are interested in joining the League, you can find us via Facebook or Google – East Northants Snooker League. We would welcome more teams.

Player Statistics Summer 2018 -

Sponsored by Gardiner Motors Wellingborough

#	Player name	Team	Current H/Cap	New H/Cap	Played	Won	Lost	% Won
1	Kevin Gardiner	Windmill Warriors	48	48	2	2	0	100%
2	Richard Wright	Windmill Warriors	-2	-4	20	15	5	75%
3	Adam Burns	Higham SAS	14	12	22	15	7	68%
4	Wayne Gardner	Higham Mecca	-18	-16	18	12	6	67%
5	Steven Williams	Coopers Ball Bashers	32	32	6	4	2	67%
6	Frank Perkins	Windmill Underdogs	36	36	12	8	4	67%
7	Paul Lewis	Windmill Warriors	14	12	12	8	4	67%
8	James Rawlins	Windmill C	24	24	22	14	8	64%
9	Martyn Hatton	Coopers Ball Bashers	26	26	16	10	6	63%
10	Neal Vaughan	Windmill Underdogs	8	8	16	10	6	63%

East Northants Snooker League -

Sponsored by Expense Reduction Analysts

Position	Team	Played	Won	Drawn	Lost	Points
1	Windmill Warriors	11	6	2	3	42
2	Windmill C	11	7	0	4	37
3	Higham SAS	12	4	1	7	34
4	Higham Mecca	9	6	1	2	31
5	Coopers Ball Bashers	9	4	3	2	30
6	Windmill Underdogs	9	4	2	3	30
7	Coopers Troopers	9	2	3	4	21
8	Coopers D	12	1	2	9	21

External designs

www.addingtons.net -
See our portfolios and services

Our sister companies have their own specific skilled and employed teams from landscapers to plumbers, carpenters, tilers and decorators.



Visit us at our beautiful showroom, off
The Market Square, Higham Ferrers, NN10 8DL
where we can discuss how we can design, build and install your
bespoke bathroom, kitchen or landscape garden.



Looking for an appliance specialist
with extensive product knowledge?



01933 355687

www.addingtons-bathrooms.co.uk -
See our portfolios and services

Internal designs

