

Nene Valley

news

Your local independent community newspaper for East Northamptonshire

Telephone:
01522 513515

We want to hear from you, so please submit your news story or event at www.nenevalleynews.co.uk

Inside...



Spotlight on Raunds

Page 4



Oundle primary school aims for top national sports prize

Page 9

Official unveiling of blue heritage plaques for Higham Ferrers



On Monday 29th October the Higham Ferrers blue heritage plaques were officially unveiled by Cllr Wendy Brackenbury (Chairman, East Northamptonshire Council), Cllr Steven North (Leader, East Northamptonshire Council) and Cllr Jason Smithers (Mayor, Higham Ferrers Town Council). Also pictured is Julie Thorneycroft, Town Manager for Rusden and Higham Ferrers.

The plaques detail an interesting fact about the building or its history. There are now 15 on various buildings which link up with the recently updated Heritage Trail.

This is part of a larger project to promote the heritage of Higham Ferrers and encourage more visitors to the town. In addition, it will enable residents to learn more about their local area.

The plaques have been funded in part by a grant of £3,500 from East Northamptonshire Council Community Facilities Fund and in part by the Town Council. The Town Hall, built in 1808, bears one of the plaques. It served as a local lock-up and courthouse until the 1930s.

Copies of the Heritage Trail are available from the Town Hall and the Library.

In Brief

Members needed

The Millers Entertainment Group urgently need two-to-three men to join the group to commence rehearsals in January 2019. The group's show will be taken 'on the road' to entertain senior citizens etc and to help raise money for churches and charities.

Anyone interested in joining the chorus or as soloists are welcome to contact us. Older people and beginners more than welcome. Call Dana on 01933 315865 or email: fitzpatdc@gmail.com

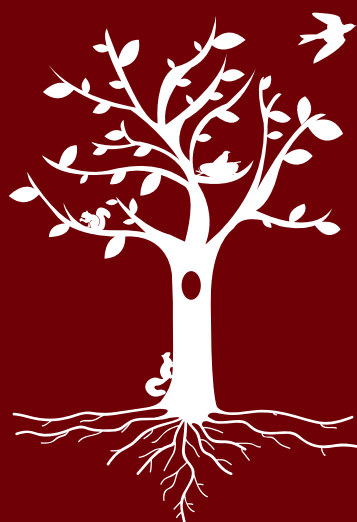
Oundle Fairtrade/Eco Christmas Market returns

Oundle's popular Fairtrade/Eco market will be held again this year in St Peter's church, on Saturday November 10th from 9am-2pm. A wide variety of handmade/recycled crafts, cards, Fairtrade foods and gifts will be on sale. There will also be the opportunity to find about green issues. Come and browse, enjoy a cup of tea or coffee, and do some ethical Christmas shopping.

BLETSOES

01832 732188
estateagents@bletsoes.co.uk

49-51 High Street, Thrapston, Northamptonshire, NN14 4JJ



Flying the nest or putting down new roots?

Bletsoes Estate Agents are here to help.

Letters to the editor

If you would like to submit a letter to the editor please send it to news@nenevalleynews.co.uk for consideration. The maximum word count is 200 words.

Dear editor,
The Bede House 'Tots' group are in desperate need of new, educational toys for the children's morning play group. The group provides much needed stimulation and relaxation for parents, carers and children of pre-school age. All are welcome.

To raise the money for these toys, the 'Tots' group are organising a Winter Wine Roadshow, in conjunction with Amps of

Oundle – a local wine merchant. This is taking place in the Bede House on 23rd November.

The Roadshow will include a Christmas Raffle. We are looking to local businesses and the local community to support us with prizes. Donations of brand-new items/ services of all kinds are sought and we would be really pleased if you would consider supporting us in this way.

Donors will be advertised on the night and in subsequent coverage of the event. Please can you support us in this very important fundraising event.

*The Bede House Tots Group.
Contact Liz on 07902 719554.*

Disclaimer: The views and comments expressed are those of the writer and not necessarily those of the Nene Valley News.

Genealogy jottings

The nights are starting to draw in, the weather is not up to much either and the lawnmowers and gardening tools have been mainly put to rest for the winter months. Time maybe for a bit of pruning – not in the garden but perhaps of the family tree.

Settling down in front of the computer, you power it up and review your tree. Last winter, in your haste to add the family of your second cousin Joe, you see that you have his oldest son as being just 10 years younger than his wife.

Erm... that cannot be correct.... can it? Where did you get the information from? You check your notes (if you have kept some...) and find that it was copied from a tree on the internet. Aha!

It is so very tempting to see something on the interwebby that appears to relate to your tree and copy it blindly. But that is how mistakes occur. I have seen trees on places like Ancestry that have glaring errors but which have been copied willy-nilly from one

By Jan Pearson
Genealogy Specialists, Tracing Our Past, Discovering Our Genes (TOP DOG)
www.genealogy-specialists.com

person to another until the thought is, "If so many have that as a fact, then it must be true!" Yes? No! Always verify what you find and don't take someone else's word for it unless they can provide a source reference.

In the early days of my research using a computer, I recorded a death date for an ancestor on a family tree website but subsequently discovered that it was incorrect. I have changed my records but still have the original death date pop up from time to time on other folks' trees.

This can be amusing when they also have children born to the person several years after they have died... but is pure laziness on the part of the person who has copied the information. Some people are just name collectors, I reckon.

Want to place an advertisement or submit an article?

If you wish to contribute or have any comments please email news@nenevalleynews.co.uk or call 01522 513515. To advertise, call 01522 513515. Alternatively you can email advertising@nenevalleynews.co.uk

If you are not receiving your copy of Nene Valley News, please email distribution@km-media.co.uk or telephone 01522 513515.

If you would like to receive this publication as a download, Nene Valley News is available online as a pdf at www.nenevalleynews.co.uk.

You can also subscribe to Nene Valley News for £39 per annum.

Nene Valley News is produced by KM Media & Marketing, County House, 9 Checkpoint Court, Sadler Road, Lincoln, LN6 3PW.

Copy dates for Nene Valley News

Publication date: Saturday 17th November
Articles to the editor by: Wednesday 7th November

Publication date: Saturday 1st December
Articles to the editor by: Wednesday 21st November

KM
KM Media & Marketing
Your partner in publishing
ONLINE | IN PRINT | IN DIGITAL

Editor's notes

One of the very few retail success stories in our District has been the Rushden Lakes development but at what cost? Some local councils are now resisting further expansion at the Lakes because it will make their own town centres less attractive to both residents and developers. Corby, Kettering, Northampton and Wellingborough Councils have written to the Secretary of State for Local Government James Brokenshire, expressing concerns about the latest application for the shopping centre. They want the Secretary of State to call in the application, currently with East Northants Council, for a decision. Their particular concern is that the proposed scheme for a further 29 small units could unbalance the retail offer, leading to their own towns decaying and becoming dysfunctional. The letter notes an estimation from Rushden Lakes developers LXB that the centre has led to a 17% reduction in shopping turnover in Wellingborough, and goes on to say: "There is now a shift towards smaller units that are in more direct competition to the town centre. In particular the proposed development is targeting local independent producers, a key objective for the town centres." The moral of the story surely is, be careful what you wish for!

There will be an opportunity for shoppers to grab a bonus when the Co-op opens its new store on a former factory site on

Church Street in Irthlingborough at 9am on Wednesday 14th November. After the ribbon cutting there will be a golden ticket giveaway, with an opportunity for the first 50 shoppers to win everything from a 49" Smart LED TV, or a Bluetooth speaker, to gift vouchers. Normally, the store will be open from 7am to 10pm Monday to Saturday and 10am to 4pm on Sunday.

We continue to highlight the work being done to commemorate the centenary of the end of the First World War; there are articles on the knitted poppies distributed in local churches and another reminder about the exhibition in Oundle's Yarrow Gallery. Hopefully, you will be able to attend one of the events we have highlighted over the past few weeks or another which we haven't been able to promote. We do urge you to mark the centenary in some way, not as a means of glorifying war but as a simple act of remembering all those who gave their lives in conflicts.

Some time ago we noted that there was a vast sum in the Government's Dartford Crossing Customer account, in the order of £70m; a further Freedom of Information request has elicited the fact that a staggering £268,419,322.43 sits in the Transport for London Oyster Card account! All this may be 'small beer' when it comes to the national debt, but for the average UK citizen who might be struggling to make ends meet they are indeed incredible sums.

Cake Decorating Supplies
For Amateurs, Professionals and Enthusiasts

Now available
PhotoCake®
Easily add text pictures and finishing touches to personalise your fantastic cake designs!

Plus all the basics - Sugar Paste, Cake Boxes, Boards and Dummies to Cake Lace, Moulds and Cutters. We have all the Baking and Cake Decorating supplies to complete your Wonderful Creations!

SCS Packaging 01933 681681
Packaging, Catering and Cleaning Supplies for Commercial, Domestic and Industrial Services.
Units 1 & 2 Orchard Road • Finedon • Northants • NN9 5JG
Email sales@scspackaging.co.uk • www.scspackaging.co.uk

Happy Feet
the little foot clinic

Foot Care Services
Toe Nail Cutting, Hard Skin and Corn Removals, Diabetic Footcare, Fungal Infections, Cracked Heels, Thickened & Ingrowing Toe Nails.
Charges from £20 to £40 max

At Newton Hall, Opposite Rushden Library
0772 306 0940
Home Visits Available

Quality Repairs To Windows & Doors

THRAPSTON GLAZING
Est 85 **WINDOW & DOOR REPAIRS**

FREE QUOTES FREE GENUINE ADVICE

QUALITY REPAIRS TO ALL MAKES OF WINDOWS, DOORS AND CONSERVATORIES SUPPLIED AND FITTED BY ANY COMPANY.

REPLACEMENT GLASS UNITS, NEW LOCKS, NEW HINGES, NEW LETTERBOXES, NEW HANDLES ETC... WITH COMPLETE FITTING SERVICE

WE ALSO SERVICE WINDOWS, DOORS AND PATIO DOORS ADJUSTING AND LUBRICATING AS WE GO, BADLY ADJUSTED DOORS ARE THE MAIN REASON FOR LOCK FAILURE.

WE STOCK AND SOURCE THOUSANDS OF SPARE PARTS TO SUIT ALL MAKES OF WINDOWS AND DOORS

OTHER SERVICES INCLUDE, CUT GLASS, TOUGHENED GLASS AND GREENHOUSE GLASS ALL DELIVERED TO YOUR DOOR WITH FITTING SERVICES IF REQUIRED.

ALL OUR FITTING ENGINEERS HAVE OVER 30 YEARS EXPERIENCE WORKING FOR US.

PLEASE CALL OR EMAIL US FOR A FREE QUOTATION

01832 734570
www.thrapstonglazing.co.uk
windowanddoorrepairs@talktalk.net

Free Quotations • No Obligation

Locks • Hinges • Glass Units • Adjustments • Servicing • Letterboxes • Handles • Window Locks • Door Locks

Pupils experience what it is like behind bars

Pupils from East Northamptonshire had a unique opportunity to learn about the causes, consequences and penalties of crime with the hope it will inspire them to always remain law-abiding citizens.

Year 9 students from Manor School, Raunds attended the Crime Awareness Day on Thursday 4th October, and were joined by Chairman of East Northamptonshire Council (ENC), Cllr Wendy Brackenbury, Thrapston and Raunds Rotary President, Robert How and Rotarian Mike Clements.

Pupils were divided into groups, and each attended six scenarios, led by an ex-

offender, police officers, ex-prison staff, The Raunds Fire Service and The Red Cross. The scenarios focused on anti-social behaviour, child grooming, harassment and carrying an offensive weapon.

A portable prison cell was brought in to illustrate life being locked away. Anthony, an ex-offender, spoke about his life from being a young boy from a law-abiding family in London to becoming involved in drugs and gangs, which led to 21 years behind bars. He told pupils how he has changed his life by getting an education and is now a full member of society.

Set up by prison officers in 1993, Prison Me!

No Way! is an educational charity that aims to raise awareness among young people about the causes, consequences and penalties of crime, which so far has reached more than 5 million young people.

The Prison Me! No Way! event was sponsored by four councillors from ENC, Cllrs Glenvil Greenwood-Smith, Tony Boto, Lance Jones and Peter Wathen, who provided £950 from the Member Empowerment Fund, which provides councillors with the opportunity to fund a variety of causes to benefit the local community. Two members of Thrapston and Raunds Rotary, Roxhill Properties, Mr and Mrs

Chapple also sponsored the event and were all thanked by Head of Year 9, Matt Sturgess.

Chairman of ENC, Cllr Wendy Brackenbury, said: "The Member Empowerment Fund provides us councillors with the opportunity to support a number of local projects. I am so pleased that funding helped the school to deliver such a fantastic event for students, and provide them with the opportunity to learn about the causes of crime and the consequences it can have."

For more information about Prison Me! No Way! visit <https://www.pmnw.co.uk>

Manor School Open Evening

Manor School Sports College extends a warm invitation to Year 11 students from across East Northamptonshire to its Sixth Form Open Evening on Tuesday 8th January.

This summer saw the school celebrate some of the strongest A Level and BTEC results in its history, with impressive changes in some of the traditionally more challenging subjects such as the sciences. This has resulted in the majority of this year's leavers securing their first-choice place at some of the most prestigious universities in the country, including Cambridge and the University of Nottingham.

Manor School offers an extensive curriculum with a wide range of courses to suit the learning needs of students of all abilities. Smaller class sizes enable teachers to get to know each student as an individual, working with them to enhance

their strengths and improve their weaknesses. Subject lessons may take place in the auditorium, professional kitchen or 3G pitch, with students also having access to several computer suites, the on-site fitness centre and Learning Resource Centre. When students reach the end of their studies they leave the school as passionate, confident and resilient adults.

The Sixth Form Open Evening will enable prospective students to find out more about the courses on offer, speak with subject teachers and current students, and discover how Manor School Sports College can provide the educational and personal development opportunities they need for a successful future.

For more information please visit the school's website or contact the school on 01933 623921.

Students stage wartime play

After just a few short weeks on their course, BTEC Performing Arts students from Rushden Academy were tasked with adapting and perfecting a non-verbal piece, commissioned to be performed at the Bernard Vann VC Memorial day held in Hall Park on Saturday 29th September.

One of the organisers wrote: "These incredible students delivered an amazing piece depicting life in the trenches and returning home after the war. Many people found it both moving and quite emotional, also bringing some to tears."



Wine Tasting Roadshow

Hosted by:

Amps
WINE MERCHANTS
Oundle

Friday 23 November 2018, 7:30pm

The Bede House, St Mary's Church, Higham Ferrers

Christmas Raffle to be drawn on the night

Raising money for much needed new educational toys for the 'Tots' Group at St Mary's Church, Higham Ferrers.

10% of sales on the night go directly to the 'Tots' toy fund.

£10 per person* • Tickets available from 07772 675175

Full bottles and cases available to buy for Christmas delivery.

Ticket only event. Limited to 80 places!

*over 18's ONLY

DB FACTORY SHOE STORE

LARGEST CHOICE & BEST PRICES

New Styles NOW IN

10% OFF

WITH THIS ADVERT

Quote: NVX1836F

Valid until 15/02/19

Wide feet or foot problems?

WE CAN HELP! Visit our specialist shoe fitting centre (on the same site)

Call **01933 410305**

www.widerfitshoes.co.uk

Opening times: Mon - Sat 10am - 4pm

Opening times: Mon - Sat 10am - 5pm.
Sun 10am - 4pm.

www.dbfactoryshop.co.uk

DB Shoes Ltd, 19-21 Irchester Road, Rushden, Northants NN10 9XF

Heavenly Feet

SKECHERS **DUNLOP**

FREE ROADSIDE PARKING

Your Dream Bathroom Starts Here

The Bathroom Fitting Co

Professional Bathroom Installation By Experts

Online Brochure-www.bathroomfitting.co

Email-info@bathroomfitting.co

We are a specialist bathroom design & installation company fitting top quality bathrooms for our trade & retail clients.

We can fit your own products or supply all the leading brands at very competitive prices

Call 01933 754 754 or Free Phone 0800 009 6966

Roca . Vitra . Grohe . Kudos . Laufen . RAK . Burlington . Aqualisa . Duravit . Ideal Standard

10% OFF WINTER SERVICING

Mowerman

GARDEN MACHINERY LTD

DOMESTIC & COMMERCIAL

- SERVICE & REPAIR • INHOUSE WORKSHOP
- SUPPLIERS OF STIHL, CUB CADET, ATCO, WOLF TOOLS AND MUCH MORE • PARTS AVAILABLE
- COLLECTION AND DELIVERY SERVICE

MOWERMAN GARDEN MACHINERY LTD

UNIT 120 • LEYLAND TRADING ESTATE • IRTHLINGBOROUGH ROAD

WELLINGBOROUGH • NORTHAMPTONSHIRE NN8 1RT

TELEPHONE 01933 274410

enquiries@mowermanlawnservices.co.uk

Spotlight on Raunds

Manor School Sports College

Manor School Sports College extends a warm invitation to Year 11 students from across East Northamptonshire to its Sixth Form Open Evening on Tuesday 8th January.

This summer saw the school celebrate some of the strongest A Level and BTEC results in its history, with impressive changes in some of the traditionally more challenging subjects such as the sciences. This has resulted in the majority of this year's leavers securing their first-choice place at some of the most prestigious universities in the country, including Cambridge and the University of Nottingham.

Manor School offers an extensive curriculum with a wide range of courses to suit the learning needs of students of all abilities. Smaller class sizes enable teachers to get to know each student as an individual, working with them to enhance their strengths and improve their weaknesses. Subject lessons may take place in the auditorium, professional kitchen or 3G pitch, with students also having access to several computer suites, the on-site fitness centre and Learning Resource Centre. Its subject provision is underpinned by extensive information, advice and guidance coupled with a wide range of enrichment and community opportunities for all students. When students reach the

end of their studies they leave the school as passionate, confident and resilient adults, fully prepared to face the next stage of their academic or professional journey.

The Sixth Form Open Evening will enable prospective students to find out more about the courses on offer, speak with subject teachers and current students, and discover how Manor School Sports College can provide the educational and personal development opportunities they need for a successful future.

For more information please visit the school's website or contact the school on 01933 623921.

THE SNOOKS Wedding & Party Venue

Large selection of lagers, hand pump bitters, ciders, bottled beers, alcopops and spirits.

We also have a wide selection of wine and champagne by the bottle to suit all budgets.

We regularly have live bands playing, like us on Facebook to get details of all our events. Use our upstairs Limelight's Suite for Wedding Receptions, Birthday Parties, Christenings and Wakes.

Find us on Facebook – The Snooks, The Square, West Street Raunds. Call 01933 626437 for more details.

Raunds Remembers

Raunds has a strong tradition of supporting the armed forces and in particular the

Poppy Appeal. As 2018 marks the Centenary of the end of WW1, this year a series of special events have been arranged.

These commemorations culminate on Remembrance Sunday, this year's parade and service are set to be bigger than ever. The Remembrance Sunday event is run by Raunds Town Council in association with the local branch of the Royal British Legion. The parade leaves the Town Hall at 2.40pm and for the first time in many years the Church Bell at St Peter's will toll as the parade arrives at the Memorial Gardens.

Following the service the parade returns to the Town Hall millennium gates, where a commemorative plaque presented to the Town by the Royal British Legion as a thank you for their on-going support for the poppy appeal, will be unveiled.

The parade will then move on to Saxon Hall, where a roll of honour commissioned by the Town Council, displaying the names of all those who lost their lives in both WW1 and WW2, will also be unveiled by the Mayor and will remain on permanent display. The Town is invited to stay for refreshments in Saxon Hall after the unveilings.

Later that evening, at 7pm, townspeople are invited to join the National Tribute as the Mayor will light a Beacon on the steps of the Town Hall and the names of the fallen will be read out.

Christmas Day at



Starters

Soup – Stilton & Broccoli
Melon
Chicken Breast Fillet Strips (served on salad with sweet chilli sauce)
Prawn Cocktail

Main course

Carvery with Turkey, Pork, Ham and all the trimmings
Vegetarian option

Desserts

Choice of various desserts including
Christmas Pudding and Cheesecake

All served from 1pm. Adults £35, Children under 12 £20,
£10 non-refundable deposit per person required to
book and selection of starter to be given when booking.
Please pop in or telephone 01933 626437 to book.

Christmas Party Night

JOE SCRIPPS ULTIMATE TRIBUTE

WITH FESTIVE BUFFET BROUGHT TO YOUR TABLE



SATURDAY 8 DECEMBER 2018 - FROM 7PM

TICKETS £15 PER PERSON

(£5 per person non-refundable deposit)
Telephone 01933 626437

www.thesnooks.co.uk

The Old Cinema, West Street, Raunds NN9 6HR



MANOR SCHOOL SPORTS COLLEGE

SIXTH FORM OPEN EVENING

TUESDAY 8 JANUARY 2019
From 5pm

Meet sixth form staff ♦ Course information
Application process ♦ Careers programme
Enrichment opportunities

01933 623921
www.manorschool.northants.sch.uk
Mountbatten Way, Raunds, Northants, NN9 6PA

Raunds Christmas Market & Light Switch-On
Sunday 25th November 2018
Entertainment on Raunds Town Square
from 3pm – 6:30pm Lights switched on at 6pm
Santa's Parade leaves the Town Hall at 2:45pm

Live Entertainment
Maximum Robbie
Robbie Williams tribute act

Fair rides
Santa's Grotto

Local Professional Snooker Player
Harvey Chandler

Variety of craft & food stalls
Clarence the Dragon
Mascot of Northampton Town FC

Big Heroes
Little Heroes

Competition winners

Thank you to our sponsors
Champion Pizza

An event organised by

See our website for more details www.raunds-tc.gov.uk or follow us
@RaundsCouncil @RaundsTC raundstowncouncil

Placing the customer at the centre of decisions

Ask most people what marketing is and they will say its function is to support sales. However, as Peter Drucker, the protagonist of modern marketing put it, "Marketing is not only much

broader than selling, it is not a specialist activity at all. It is the whole business seen from the point of view of its final result, that is from the customer's point of view." But what does this actually mean?

There are four trains of thought. Those that believe a company's success is based around sales and revenue. Those that believe products should be the focus of the business. Then we have advertising

orientation, where it is all about the story you tell. And finally, the train of thought known as market orientation or customer centricity, which places the customer, their beliefs and behaviours at the centre of all company decision-making.

A very brief glance at the four attributes and you might say that sales orientation has to be the most successful, but whilst revenue is paramount, this does not always equate to profitability.

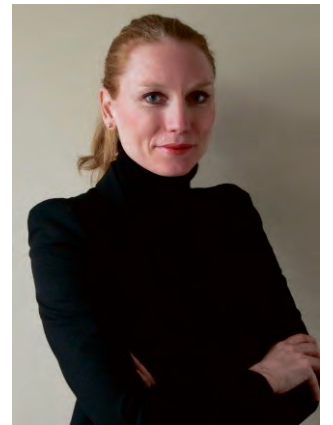
In 2006, Alan Mullaly took over as CEO at Ford. At the time, the company was turning over \$160 billion and owned seven car companies. It all sounds pretty impressive

until you realize that they were making a loss of \$12 billion a year. By the time Mullaly retired in 2015, the company had sold off all but two makes of car, was turning over \$150 billion and making \$7 billion in profit. When asked, Mullaly put the success down to being market-driven and customer focused with everyone inside the company completely understanding the vision.

This powerful example backs up the research around market orientation, which states that customer centric companies enjoy higher profitability, sales growth, customer retention and new product success.

To become market

orientated, CEOs need to get as close as possible to the customer; invite feedback and listen to staff who have daily contact with those customers. Over and above this, staff need to stop working in siloes and instead share information, decision making and blame.



As a marketing strategist and brand builder, I'm fascinated by the seemingly disparate that brings people together. I use research and analysis to find potential customers who share passions with companies' products and services. For further information on the benefits of market orientation, contact Sally-Ann Farrington via LinkedIn

Church poppies on display

Back in the depths of last winter, creative artist Caroline Kisby of Pink House Arts began a community knitting project to commemorate local men who fought in The Great War. Working with 30 volunteers from across the Warmington Benefice and further afield, more than 1,720 poppies and leaves have been knitted to decorate wreaths, creating a lasting memorial to 172 men listed on the Roll of Honour in the five benefice churches of Cotterstock, Fotheringhay, Southwick,

Tansor and Warmington. Each wreath is personalised with an embroidered name label.

Tim Stimpson from Fotheringhay said: "My paternal grandfather was killed in August 1918 in action in France. My father never knew his father, being only 3 at the time. He left a young wife and three children under 9. My mother Joyce, who is 95, has knitted poppies for Fotheringhay to support this wonderful memorial initiative. Some of the knitted poppies have also

been taken by my brother to my grandfather's war grave in France on the anniversary of his death 25th August 1918."

Alison Reid explains that she became involved to do some knitting with her 10-year-old son, "so that he made a connection between the poppies we made and its representation of far too many lives lost... It was fantastic to be involved in this community project." The wreaths will be displayed in the five churches on 11th November.



A special display will be held in Fotheringhay and Warmington churches on 3rd and 4th November between 10am and 5pm. Other times for Warmington: Saturday 12noon to 5pm and Sunday 10am to 3pm.

Oundle Library pop-up shops

Shopping may not be the first thing that springs to mind when you think about your local library but in a new venture Oundle Library will be hosting Pop-up shops

throughout November and December. Each Tuesday and Saturday visitors will be able to browse a selection of gift items from local makers,

including handmade children's clothes, patchwork gifts, skin care, handmade lanterns, soaps, cards, jewellery and much more.

For details visit www.friendsofoundlelibrary.org.uk.

What's On
AUTUMN
20
18

CASTLE
THEATRE
Wellingborough

Halfway To Paradise
The Original Members Of Billy's Band
Fury's Tornadoes & Colin Gold
Thu 15 Nov, 7.30pm
Tickets £21 (£20)

Peppa Pig Adventure!
Sat 17 & Sun 18 Nov*
£17 (£15 under 16s) (£10 6-12 months)
*Times vary, check online

SOUND OF MUSIC
Thu 29 Nov, 7pm
Tickets £15 (£10 Under 16s)

CASTLE Comedy CLUB
Fri 30 Nov, 8pm
Tickets £12.50 (£10.50)

Box Office 01933 270 007

castletheatre.co.uk

FREE PARKING

PAY NO BOOKING FEE

Castle Theatre, Wellingborough

@castle_WEL



Notice of planning applications received

Notice is given that the following applications have been received together with the last date for making representations:

Aldwincle
18/01818/FUL (24/11/2018) (LB/CA) Change of use of Lyveden Manor from dwelling house to visitor attraction including cafe, car park and landscaping at Lyveden Manor Harley Way Oundle PE8 5AT
18/01819/LBC (24/11/2018) (LBRegs) Change of use of Grade 1 Listed Lyveden Manor from dwelling house to visitor attraction including cafe, car park and landscaping at Lyveden Manor Harley Way Oundle
18/01924/FUL (17/11/2018) (Info) Single storey rear extension at 14 Cross Lane Aldwincle NN14 3EG
18/01969/FUL (24/11/2018) (LB/CA) Change of use of existing annexe to separate dwelling with demolition of existing garage, new rear extension and oil tank. New office building to garden of existing house at 50 Main Street Aldwincle NN14 3EL

Barnwell
18/01920/FUL (24/11/2018) (LB/CA) Demolish existing timber porch and replace with new stone porch and reorganise existing toilet area to provide a fully accessible toilet at Princess Alice Centre Church Hill Barnwell

Brigstock
18/01862/FUL (24/11/2018) (LB/CA) Removal of existing cricket net and erection of new two lane cricket net in new location at Playing Field Bridge Street Brigstock NN14 3ET

Fotheringhay
18/01881/FUL (17/11/2018) (Info) Erection of steel portal frame building to house both agricultural machinery and a storage container at Walcot Lodge Woodnewton Road Fotheringhay PE8 5HY

Glaphthorn
18/01934/FUL (17/11/2018) (Info) Demolition of existing rear single storey extension and construct new single storey rear extension at Corner Cottage 2 Main Street Glaphthorn PE8 5BE

Great Addington
18/01926/FUL and 18/01927/LBC (24/11/2018) (LB/CA) (LBRegs) Two-storey side extension, refurbishment of existing barns and internal alterations at Hare And Hounds Inn Main Street Great Addington NN14 4BS

Higham Ferrers
18/01893/FUL (24/11/2018) (LB/CA) Demolition of single storey barn at 15A Westfields Terrace Higham Ferrers NN10

Irthlingborough
18/01860/ADV (24/11/2018) (LB/CA) Erection of two non-illuminated hoarding signs at Council Offices Station Road Irthlingborough NN9 5SN

Kings Cliffe
18/01971/FUL (24/11/2018) (LB/CA) Proposed 2 new dwellings (revised scheme to 18/00586/FUL) at 33 Wood Road Kings Cliffe PE8 6XF

Little Addington
18/01885/FUL (24/11/2018) (LB/CA) Erection of three bay garage/car port at Manor Farm Barn Irthlingborough Road Little Addington NN14 4AS

Lutton
18/01857/FUL (17/11/2018) (Info) Demolition and reconstruction of barn to side of dwelling to form habitable room; single storey rear extension; replacement rear conservatory conservatory at Weston House Washingley Road Lutton PE8 5ND

Nassington
18/02000/FUL (24/11/2018) (LB/CA) Proposed car port at 35 Church Street Nassington

Oundle
18/01791/FUL (24/11/2018) (LBRegs) Refurbishment of the existing Cobthorne Stables and adjacent garage building of Oundle School, replacement of existing stable and barn doors, rainwater goods, windows and rooflights, removal of the existing masonry planters to the front of the Cobthorne building and the construction of new planting beds, dwarf wall and railings, reinstate paving to existing crossovers. All works as detailed in the schedule of works at The Stables Cobthorne 16 West Street Oundle PE8
18/01921/FUL (17/11/2018) (Info) Two storey rear extension, single storey front extension and conversion of garage to habitable room at 13 Millfields Oundle PE8 4LF
18/01998/FUL (17/11/2018) (Info) Single storey front and two storey side extensions (resubmission of 18/01541/FUL) at 8 Whitwell Close Oundle PE8 4HD

Raunds
18/01510/OUT (17/11/2018) (Info) Outline: Demolition of existing building and residential development consisting of 5

No 4-bedroom dwellings with amended access, associated parking and amenity space (all matters reserved except access) at 46 Cartrill Street Raunds NN9 6ER
18/01744/OUT (24/11/2018) (Art8) Outline application for up to 10 dwellings, including access onto Brick Kiln Road at land known as The Poplars Brick Kiln Road Raunds
18/01950/FUL (17/11/2018) (Info) Two storey side and rear extension at 5 Webb Road Raunds
18/01979/VAR (17/11/2018) (Info) Variation of condition 3 (no gates or doors to carport) to allow roller shutter door pursuant to application 16/00801/FUL: Two storey side and single storey rear extension at 19 Hill Street Raunds NN9 6NP
18/02003/VAR (17/11/2018) (Info) Variation of condition 13 to allow altered access and parking pursuant to planning application 16/01488/FUL: Erection of a pair of semi-detached dwellings dated 16.01.2017 at 36 London Road
18/02005/FUL (17/11/2018) (Info) Erection of a single storey detached dwelling (resubmission of 18/00775/FUL) at land adjacent 10 Belmont Gardens Raunds

Ringstead
18/01974/FUL (17/11/2018) (Info) Demolish existing garage and replace with new two storey garage at 35 Gladstone Street Ringstead NN14 4DE

Rushden
18/01813/FUL (17/11/2018) (Info) Open space incorporated into residential curtilage at 45 Aintree Drive Rushden
18/01851/FUL (17/11/2018) (Info) Demolition of existing and construction of two dwellings at 84 Avenue Road Rushden NN10 0SJ
18/01906/FUL (17/11/2018) (Info) Single storey front extension below existing flat roof canopy at 142 Wellingborough Road Rushden NN10 9ST
18/01936/FUL (17/11/2018) (Info) Demolition of existing single storey rear extensions. Erection of new, single storey wrap-around extension with part hipped, part flat roof with roof lights and parapet detail (resubmission of 18/01175/FUL) at 26 Oswald Road Rushden NN10 0HN
18/01940/FUL (17/11/2018) (Info) Two storey side and rear extension at 67 Blinco Road Rushden NN10 0EA
18/01970/FUL (17/11/2018) (Info) Single storey rear extension at 33 Carnegie Street Rushden NN10 9SN

Stanwick
18/01938/FUL (17/11/2018) (Info) First floor extension at the rear of house and alterations to existing rooflights at The Old Gospel Hall Villa Lane Stanwick NN9 6QQ
18/02027/FUL (24/11/2018) (Art8) Erection of an

agricultural building for egg packing and storage on existing free range egg unit at Hollywell Farm Chelveston Road Stanwick NN9 6TZ

Thrapston
18/01900/FUL (24/11/2018) (LB/CA) Proposed replacement of existing garage with a two storey two bed dwelling and associated site works (resubmission of 18/01473/FUL) at 68 Market Road Thrapston NN14 4JU

Woodford
18/01899/VAR (24/11/2018) (LB/CA) Variation of conditions 5 and 7 to vary position of car parking and to vary the boundaries pursuant to planning application 11/01050/FUL: Erection of detached three bedroom dwelling with parking to rear following demolition of existing garage dated 18.11.2011 at 16 Whittlesea Terrace Woodford NN14 4JA
18/01901/FUL (17/11/2018) (Info) Proposed single storey rear and side extensions at 36 Highfield Woodford NN14
18/01904/FUL (24/11/2018) (LB/CA) Erection of new agricultural building for storage of machinery, feed and bedding at SP96399 76662 Addington Road Woodford

Woodnewton
18/01902/OUT (17/11/2018) (Info) Outline Planning Permission for one detached dwelling (all matters reserved except access) at land adjacent 11 Orchard Lane Woodnewton

The reason for applications being advertised is as follows:
Part3 - Town and Country Planning (General Development Procedure) Order 2015.
Part16 - Town and Country Planning (General Development Procedure) Order 2015.
Info - Non-statutory - included for information only.
LB/CA - Planning (Listed Buildings and Conservation Areas Act 1990.
LBRegs - Planning (Listed Buildings and Conservation Areas) Regulations 1990.

Paul Bland, Head Of Planning Services
Dated 3 November 2018

Consultation deadlines will differ for each application. Please go to www.east-northamptonshire.gov.uk/planningapplications for details.

From the Chairman

It has been another busy fortnight with visits across the district as well as civic services in some of our most beautiful churches. The Northamptonshire Court Service was a particular highlight and we have enjoyed some rousing hymns.

Speaking of courts, I had the pleasure of joining Raunds Manor School for their recent Crime Awareness Day where Year 9 students learned all about the causes, consequences and penalties of leading a criminal life. The event was organised by Raunds Rotary and supported by ENC Raunds councillors who used their Member Empowerment Fund to help make the event happen. Prison Me! No Way! Is an educational charity set up by prison officers, that has been going since

1993. It was a great day looking at some thought provoking issues. On to healthy and active lifestyles, I was joined by Irthlingborough Mayor, Matthew Maedge and leader of ENC, Steven North to open a new outdoor gym at the town's recreational ground. The gym was also funded by the ENC Community Facilities Fund which supports community projects and includes equipment suitable for all ages and abilities. The flat, brightly coloured surface is also helpful for those with visual impairments. Our leisure

partners, Freedom Leisure provide a free gym buddy on Monday 10am-11am so pop along and give the outdoor gym a try. A newly installed play area in Barnwell has also come about thanks in part to the ENC Community Facilities Fund. It's based in the grounds of the Montagu Arms but is for all to use and I hope lots of families will make use of and enjoy this wonderful new asset. A big congratulations to all those involved in these community projects. It takes a lot of hard work to make these things happen and seeing people enjoy them is the best reward. As the temperature begins to drop, it was the ideal time for the launch of the Northamptonshire Energy Saving Service (NESS) which I recently attended. It's a



The new Irthlingborough outdoor gym is now open thanks to a team effort

three-year project to tackle fuel poverty so if you're having problems heating your home, get in touch on 01604 623700 for advice and practical help. Or go to the website www.northamptonshireenergysavingservice.org.uk where

you can check energy tariffs, carry out a home energy assessment and sign up for a financial health check and advice on entitlements.

ENC Chairman,
Cllr Wendy Brackenbury

Business support expert scoops Midlands award

A Northamptonshire businesswoman has won the prestigious title of Midlands VA (Virtual Assistant) of the Year Award 2018.

Elizabeth Wright's company Admin and More, based in Northamptonshire, provides a Virtual Assistant service to a range of clients in different industries across the region and the UK.

Judges commended Elizabeth's company as fast growing in the region and their work as innovative, and found that Admin and More was providing clients with outstanding services around the UK. Chairman of the Judges Panel and Founder of bemyva.com, John Palmer said: "Elizabeth has built a solid and efficient business, her work is a demonstration of good practice."

Elizabeth Wright said: "As business owners, both myself and our skilled team of Admin and More Associates, understand the challenges and opportunities facing SMEs in a competitive market. We are here to make businesses'

lives easier, relieving the burden of time-consuming tasks, enabling our clients to focus on the things that are important to them.

"We assist a wide range of businesses, providing bespoke administration and business services to meet each client's needs.

"From board level to basic admin support for sole traders, Admin and More adapt our services for each business. And if we see something that can be achieved more efficiently or effectively, we'll suggest a better way of doing it. But we also provide training on basics such as Mailchimp, Quickbooks and Xero for business owners who want to do it themselves."

Elizabeth will now represent the Midlands in the Finals for the UK at The Business Show at The Excel Centre, London on 15th November.

Children needed at pre-school

Brigstock Pre-School Playgroup has been running for over 40 years but we have a problem this year, a lack of children. On role at the moment we have 11 children but can cater for up to 30. This is due to not having many 2-to-5 year olds in the village and that some parents need the 30 hours or full days which at the moment

we cannot supply, so they have gone elsewhere. This is a serious problem for us but we want to continue. We are open every morning in term time from 9.15am until 12.15pm. We take 2 year olds

upwards. Funding is available for 3 year olds and some 2 year olds. Our staff are dedicated to the EYFS curriculum and achieved 'Good' from the last Ofsted inspection.

If you are interested in joining us or want any more information please contact Sarah during session time on 01536 373197. Mobile 07708977714 or Email: brigstockplaygroup@outlook.com. We look forward to hearing from you.

East Northamptonshire Council adopts Tresham Garden Village Masterplan

Councillors have agreed a set of ambitions for a new garden village on the old Deenethorpe Airfield which will see 1,500 new homes created on a bespoke site that will also boast local employment opportunities and first-rate community facilities.

Leader of ENC, Cllr Steven North, said: "Our ambition is to create a unique new village with high-quality homes, first class schools, local jobs that are easy to access and plenty of green

space and recreational areas, all in an outstanding location. Councillors debated the merits of the masterplan at our full council meeting this week and agreed that this exciting project must move forward. We have secured government funding and have consulted with the local and wider community so now that we have the masterplan approved, we're ready to see this wonderful development take shape."

ENC Councillor Roger Glithero

is Chairman of the Garden Village Project Board which includes representatives of the district, county and parish councils. He added: "It has taken a lot of hard work to reach this stage so I'd like to thank everyone who has worked on developing the masterplan, including residents who took part in the consultation earlier this year. We now look forward to receiving a planning application for the site later this year."

CLOSING DOWN SALE NOW ON



UP TO 70% OFF

PeterCrisp

Design Studio

01933 356 424

www.petercrisp.co.uk
25-27, Church Street, Rushden, NN10 9YU

Have your say on services provided by East Northamptonshire Council

Residents can now give their views on how they think the council is performing via the annual council survey.

It's an opportunity for residents to give their feedback on public services in the district and where they feel improvements could be made.

Leader of East Northamptonshire Council, Steven North, said: "With further reductions in external funding predicted for the next few years, views from across the district will help to shape services and how money is spent so we urge residents to take part in the survey so all views can be considered."

The short survey is available from 5th November until 16th December 2018 on the council's website at www.east-northamptonshire.gov.uk/residentsurvey. Paper copies are also available at council offices and on request on 01832 742265.

Our survey said:

The graphic on the far right is a snapshot of what residents said in last year's survey and how we have responded:

You said... whilst 96% of you are satisfied or better with our leisure centres, you did raise some concerns about cleanliness and poor standards in the changing rooms.

We say... since the survey,

our new contractors, freedom leisure, have settled in and implemented stricter cleaning regimes so we're pleased to report that their recent survey shows that customers are happy to recommend all three leisure centres (Nene, Pemberton and Splash) for their facilities and good hygiene.

You said... you like being active but some of you struggle to access leisure centres due to distance and transport.

We say... with freedom leisure, we've developed an Active Communities programme that includes different activities being hosted at venues across the district. Our Walking for Health scheme is popular in Rushden and Nassington and the outdoor gym sessions at Raunds and Thrapston have seen our freedom leisure buddy help local people enjoy the equipment and get fitter. The programme also includes Family Xplorer sessions, seated exercise, Boccia and Yoga. Go to www.freedom-leisure.co.uk/centres/active-communities/east-northamptonshire/ or call 01933 350324 for details.

You said... that setting up your own business was of interest to 33 of responders.

We say... we provide a business support service with excellent links with the South East Midlands Local Enterprise Partnership

Growth Hub who can help you realise your ambition. This year, we have helped 45 people with setting up and growing their business to date. Find out more at www.east-northamptonshire.gov.uk/enterpriseEN

You said... you love the green space in the district but you want to know more about events that you can enjoy.

We say... we have a very active tourism officer who works with many partners to put on some great events along the Nene Valley from Northampton all the way to Peterborough. You can find out what is happening on twitter @_NeneValley on facebook at Nene Valley or via the website www.nenevalley.net There's also a kiosk at Stanwick Lakes and at Rushden Lakes and we have a gazebo at many local events so look out for the dragonfly and pop over for a chat about what we have planned.

You said... 87% of you are happy with the waste and recycling service that we provide but the opening hours and accessibility of the recycling centres that are run by Northamptonshire County Council don't always suit your needs.

We say... we have shared your feedback with the county council for their planning of future services. In the meantime, check

their website for opening times and accessibility before you set off (or even better, before you load your vehicle) www3.northamptonshire.gov.uk

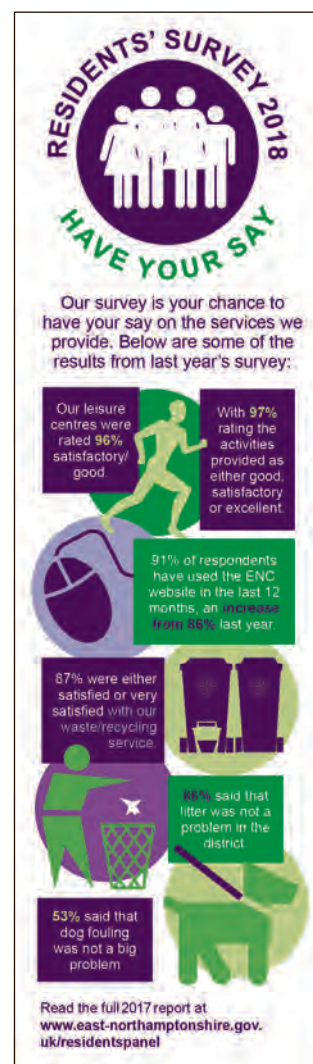
You said... you want to recycle as much as possible but you're sometimes confused by what you can and cannot recycle, especially carrier bags.

We say... thank you for recycling and for being so enthusiastic about it. We're working with the recycling industry and our new waste contractors, FCC to make sure that we're collecting as many recyclables as possible and to make it clearer what can be recycled, particularly as every council does it differently. For now, please check our website for details of what goes in which bin www.east-northamptonshire.gov.uk/recycling and follow us on twitter @ENCouncil for lots of recycling tips. For those not online, we don't recycle plastic bags as many are not recyclable and they

can jam up the sorting machinery which causes big problems.

You said... litter, flytipping and/or dog mess continue to be a problem in some parts of the district.

We say... we've issued over 30 Fixed Penalty Notices this year for these dirty crimes and we will continue to take action where we can – catching people at it is the tricky part but our officers spend a lot of time patrolling trouble hotspots and working with partners and members of the public on detection, prevention and clear up projects. We host regular clear ups and litter picks (and if you want to borrow our equipment, drop us a line) and work with Highways England who are responsible for the major roads and with other landowners to keep our district neat and tidy. Environmental crime takes up a lot of officer time but we're determined to catch those who commit the offences and to keep our district as clean as possible.



For the full analysis of the 2017 report, go to www.east-northamptonshire.gov.uk/residentspanel

To take part in this year's survey go to www.east-northamptonshire.gov.uk/residentsurvey

Sell-out annual concert for male voice choir

On 20th October, Northampton Male Voice Choir (NMVC) under its Musical Director, Stephen Bell, performed to a capacity audience of 400 at The Cripps Theatre, Northampton School for Boys.

The men were superbly supported by their special guests, the award-winning ladies a cappella chorus Junction 14 from Milton Keynes, who performed a brilliantly contrasting selection of songs from their repertoire.

The concert ended with an impromptu finale, with both choirs taking to the stage to give a rousing performance of 'When the Saints Go Marching In' with enthusiastic audience participation.

Having significantly increased its numbers by 35 men following a major recruitment initiative earlier in the year, this concert represents something of a musical watershed for NMVC which, at over 80 strong, is now one of the largest male voice choirs in the country and is entering a significant period of development in which it will expand its repertoire and further improve its very high standards.

For further details about Northampton Male Voice Choir please check out the NMVC website on www.nmvc.co.uk
Information about Junction 14 may be found at <http://junction14.org>

Oundle School commemorates the centenary of 'the end of the Great War'

In commemoration of the centenary of the end of the First World War, Oundle School is hosting an exhibition at the Yarrow Gallery that gives a glimpse into the lives of those living through the Great War.

Through memorials, photographs and diaries, the exhibition details the stories of pupils and staff from the School and the town during this time, giving a unique insight into how Oundle supported the war effort, here and abroad.

Elsbeth Langsdale, Archivist at Oundle School, has ensured the exhibition tells the personal stories of those affected by the War. "The exhibition commemorates the lives and experiences of those who lived in Oundle or



were part of the fabric of the town during the Great War," she explains. "Through the diaries and letters of Oundle staff and pupils, we get a real feeling of how it felt to be part of the war and it brings the Oundle story, during this time, to life."

Special contributions will also feature from the Oundle Museum, St Peter's and the families of those who fought in the War.

The Exhibition will be held from 5th-11th November at the Yarrow Gallery, Oundle.

*They shall grow not old, as we that are left grow old:
Age shall not weary them, nor the years condemn.
At the going down of the sun and in the morning
We will remember them.*

Robert Laurence Binyon (1869-1943)

Huxlow students learn how to 'Restart a Heart'

Tuesday 16th October was national 'Restart a Heart' Day, organised through the joint effort of the Resuscitation Council (UK) and the British Heart Foundation, who donated free training kits to the schools taking part.

115 Huxlow students were taught how to save a life by Community First Responders from the East

Midlands Ambulance Service (EMAS). They were trained in how to perform CPR on someone in cardiac arrest and how to use a defibrillator. In a life-threatening emergency seconds count and chest compressions keep oxygen flowing around the patient's body increasing their chance of survival.

Mick Barnett-Connolly,

Head of Community Response at EMAS said: "If someone suffers a cardiac arrest their chances of survival increases considerably if it happens in front of someone who starts CPR immediately. We are growing the network of lifesavers in the East Midlands by equipping these students with skills they will remember for life."



Oundle primary school aims for top national sports prize

Oundle CE Primary School is now aiming to win the prestigious School Games Platinum Mark in 2019 after securing a Gold Mark for the fourth consecutive academic year.

The School Games Mark is a Government-led award scheme launched in 2012, facilitated by the Youth Sport Trust to reward schools for their commitment to the development of competition across their school and into the community. Some of the school's sporting achievements this year included 100% progress for children who took part in PE interventions while 77% of Key Stage 2 children participated in a sports activity during after-school club. The school has also enjoyed a strong

link with Peterborough United through the Premier League Primary Stars Programme and took part in 20 local inter-school sporting competitions.

"We are extremely proud of our pupils for their dedication to all aspects of school sport and to receive

this award is a well-earned reward for them," said the headteacher at Oundle CE Primary School, Mrs Janet McMurdo. "It is also a tribute to all our young volunteers, teachers and officials who have made our competitions possible."



Volunteer Befrienders needed

Do you have some free time on your hands? Would you like to give back something to isolated, elderly people and feel that you are doing something worthwhile?

Nene Valley Community Action (NVCA) has been running a successful befriending project for some time now. This project, 'HOME @LONE' provides volunteers to visit elderly and frail adults, who may be

isolated from the community, in their own homes giving them something to look forward to, a purpose to get up and dressed and most importantly someone to talk to and interact with.

Our Befrienders tell us that they find it a very rewarding and worthwhile opportunity too and make some lovely friendships out of their visits. It gives them a real opportunity to learn all about somebody else's life journey,

giving them an insight into years gone by. Training and support is provided by NVCA and travel expenses reimbursed.

We are looking for more people to join us as volunteers, so if you think that this might be "up your street" then please give us a call on T: 01933 313526 to arrange an appointment to discuss further.

Peter Crisp Ltd - Announcement

Peter Crisp Ltd has decided to close down the Kitchen, Bedroom & Bathroom Design Studio in Church Street, Rushden at the end of this year.

This tough decision has been based on the current challenging economic climate and my desire to step down from managing the retail operation of Peter Crisp Ltd.

Going forward I will continue to be at the helm of Peter Crisp Ltd as managing

director, concentrating on developing our property interests, which is already an established area of our business portfolio.

It has been the Crisp family's pleasure to have served the local community in Rushden High Street for 59 years. We have been proud to uphold our values of quality and customer

service. I would like to make it clear that Peter Crisp Ltd is not in any financial difficulty and can meet all its commitments.

All customer contracts will be completed by our usual team of expert craftsmen, and our customers will continue to receive the high level of customer service for which we are so well known.

You will be able to contact me on our usual phone number (01933 356424) and email address info@petercrisp.co.uk after the Design Studio has closed.

BOSWORTH'S
Christmas

Christmas events
at BOSWORTH'S

Burton Latimer:

Tea with Santa, Santa's Storytime,
Giant Snowglobe and Santa's Grotto.

Elton:

Breakfast and Tea with Santa, Flight of
Wines Evening on 13th December and
Christmas Party Menu through December.

Real Reindeer at both sites in December,
Burton Latimer 1st and 8th,
Elton 2nd and 9th.

Real Trees and Wreaths in store
from late November.

BOSWORTH'S GARDEN CENTRE
Finedon Road, Burton Latimer NN15 5QA
Tel: 01536 722635

BOSWORTH'S GARDEN CENTRE
Elton, Peterborough PE8 6SH
Tel: 01832 343104

All bookable online at www.bosworthsgc.co.uk

Your Health – Get out of your car!

Walking is easy to do, free, and a great way to lose weight. It also helps you improve many aspects of your health. And yet we still insist on driving everywhere!

What is wrong with us all? We pay for expensive gyms, go to exercise classes, and then drive to the local shop.

According to a report by Public Health England, middle aged men and woman are not getting enough exercise. In fact many adults aged 65 and over spend, on average, 10 hours or more each day sitting or lying down. That means that the kids aren't our most sedentary age group, it's the over 65s! Yet we all moan about the kids of today.

So it's time to get out of your chair and start walking.

Of course, a slow dawdle around the shops isn't

really exercise. You need to walk briskly. If you can talk but can't sing the words to a song, you're probably walking fast enough (though I'll admit that you might just have forgotten the words to the song.)

And you don't have to walk for hours. The Government recommends people undertake at least 150 minutes of activity each week.

How do you make this happen? Here are my thoughts:

- walk part of the way to work
- meet a friend for a walk instead of for a cup of tea
- walk to the local shop
- make a walk part of family gatherings, don't

just focus on a meal

- walk kids and grandchildren to school – they need the exercise as much as you do.

And of course... mow the lawn! Despite my loathing for the lawnmower, I have to concede that mowing is exercise.

Top tip – If you're a bit wobbly on your pins due to age or surgery, or if you don't want to walk alone, the Nordic Walking group that meets at Stanwick Lakes is perfect for you – call Fiona Fiander on 07763 353097

Have a speedy walking week!

Claire

Claire Short is a Registered Osteopath, and runs The Ashgrove Clinic in Higham Ferrers. Send your questions to claire@ashgrovehealth.co.uk or Tweet to @AshgroveClinic

Wildlife News

Recently our area made headline news (in some quarters maybe) not because of problems on the roads or the lack of money for council spending or any other depressing item, but because we were visited by an unusual, and probably lost and homeless, native from another country. No fears this time, though, and no passport difficulties, because this bird delights in the name of rose-coloured starling, and it is sufficiently unusual in our patch of the country to draw visitors from many miles away. I did not see it, but reference books show a bird very similar in outline to the common ones which we all know well, and a diet including many items which our countryside can provide. Yet it does not live here, and it has become known as a rarity not because it is in danger of dying out but because it has found living conditions to satisfy its needs, so it has no reason to force itself to fly hundreds, even thousands, of miles for winter, perhaps risking being blown off course, separated from the rest of the family or flock.

Some dedicated watchers have records of many different species which do undertake quite dangerous journeys and get lost, or even damaged by extreme weather conditions, arriving at completely unscheduled destinations; they are then classified as 'rare', 'uncommon visitor' or

'vagrant' depending on how many birds are seen. Whatever the result, one thing is certain – they will not be something seen when you draw the curtains in the morning; it may be quite exciting for you to imagine a rarity turning up in your back garden, but it is precisely because they are rare that they are given the extra attention of newspaper reports or television and camera pictures. So it is worth remembering that these strangers are not part of the regular population of animal life; our plant cover determines what creatures will do to find their ideal living conditions, and the reserves along the Nene provide us with plenty of chances to see the occasional surprise but the secret is to look after the common plants and animals and just hope for the occasional unexpected visitor.

Roy Burrell



FAMILY LAW ADVICE

We'll help you make the right choices.

- Free initial phone call
- Divorce and relationship breakdown
- Marriage and relationship planning
- Finances on separation
- Children
- Domestic violence
- Mediation

NORTHAMPTONSHIRE
LAW SOCIETY
LARGE LAW FIRM
OF THE YEAR
2017



Highly rated by
the Legal 500,
a Who's Who
of the legal world.



01933 697511
enquiries@wilsonbrowne.co.uk
wilsonbrowne.co.uk

wilson browne SOLICITORS
All the help you need

Waiting for an appointment with a PHYSIOTHERAPIST?

**In pain?
Not sure what exercises to do?**

Wait no more. Our chartered physiotherapist will help you get back to your normal life.

Call us now if

- You've had an operation and you're waiting for a physiotherapy appointment.
- You want to get better at your sport after an injury.
- You need help training for a big event.
- You're not sure if we can help.

Come in for a FREE 20 minute consultation.

Call us now on 01933 328020
and our physiotherapist will find out whether we can help you.

Whether you've just had a joint replacement, groin strain or shoulder injury we're here to help you get better, and better.

Osteopathy | Cranial osteopathy | Gait analysis | Podiatry
Hypnotherapy | Acupuncture | CBT | Physiotherapy
Shoulder treatments | Sports injury therapy
Counselling | Rhythmic movement therapy | Injury rehab

**GET YOUR
FREE
CONSULTATION
TODAY**
NORMALLY £48

The
Ashgrove
Clinic
— Higham Ferrers —
Call 01933 328020

www.ashgrovehealth.co.uk | 01933 328 020

13 Lancaster Street, Higham Ferrers, Rushden, Northamptonshire, NN10 8HY

Thursday 8th November
AFC Rushden & Diamonds
Quiz Night

Rushden Bowls Club, Northampton Road, Rushden NN10 6AN
7.30pm, tickets £3 each – up to 6 people per table. To book a table please contact Glenis 07870 332606. Raffle, retiring bucket, collection for Cransley Hospice.

Saturday 10th November
I-Grow's annual Festival of Remembrance Concert
St Peter's Church, Irthlingborough 4pm-6pm, £5 entrance. 01933 303020 or call in at Blue Moon Mortgages Ltd in the High Street for tickets. Thrapston Town Band, Tracey Barker, school choir, refreshments and raffle.

Sunday 11th November
Whitefriars Church Silver Service
The Bridge Community Office at Whitefriars Junior School, Boughton Drive, Rushden NN10 9HX
10.30am. Melvyn Hunter 01933 222910. A traditional church service open to anyone of any age.

Whitefriars Church, Rushden, Countryside Walk – 'a Hargrave Hobble'
Meet in the lay-by on the B645 between Chelveston and Hargrave. 10.30am. Andrew Presland 01933 316927. A walk on footpaths in the Hargrave area – including two-minute silence at 11am.

Monday 12th November
Oundle U3A Monthly Meeting
Queen Victoria Hall, West Street, Oundle
Doors open 2pm, members £1, non-members £2. 01832 275933. BLESMA – who we are and what we do.

Saturday 17th November
Higham Ferrers Christmas Sparkle
Townwide event
10am-3pm. Continental Market, craft stalls, funfair, live events, street food, refreshments and Father Christmas! This event is organised by the many different bodies, Higham Ferrers Tourism, Business and Community Partnership included.

Advent Fayre
St Mary's Church, Ringstead
10am-1pm. Stalls, gifts, tombola, raffle, crafts and many more. Come and join us!

Sunday 18th November
Fotheringhay Christmas Craft Fair
Fotheringhay Village Hall
11am-4pm, free admission. Caroline Kisby 01832 226268
Gifts for Christmas, refreshments, willow weaving demonstrations, locally handcrafted items.

Higham Ferrers Footpath Group
Saffron Road car park Higham Ferrers for car sharing
9.15am, free. 01933 622895.
6.5-mile walk in Southwick Woods.

Table Top Sale
Rushden Goods Shed
10am (9am for sellers), £5 per table if provided by seller, else £8 for 2m x 1m table. Free admission to the public. To book a table contact administrator @rhts.co.uk. Come and grab a bargain, or clear out your unwanted items.

Thrapston Town WW1 1918 Anniversary Concert
St James Church, Thrapston
5pm, tickets £8 advance, children FREE available from vinedavy@hotmail.com, 01832 733586 or £10 on the door. In association with Thrapston & District Royal British Legion – a commemorative concert of choral music with orchestral accompaniment given by a choir of local singers directed by Vincent Davy. The programme will include the poignant Faure 'Requiem' and the Charpentier 'Te Deum' – thanksgiving canticle.

By Appointment
Counselling & Listening Service
No 1 St Osyth's Lane,

Oundle, Northants PE8 4BG
Free service, Marilyn 07936 015965

Housing, Benefits and Employment Advice
No 1 St Osyth's Lane, Oundle, Northants PE8 4BG
01832 770010/
office@oundlebaptist.org.uk

Half-Term
All-age Touch Typing Club
Mon-Fri, 9.30am-10.30am, learn or refresh skills, £15 course intro with coffee. Diane Gifford 07432 123438

Every Monday
Stanwick Handbell Ringers Group
The Stanwick Village Hall
7pm-9pm, 01933 623855, check out our website for more details. Everyone welcome, come and have a go.

Tai Chi
Stanwick Village Hall
7pm-8pm, £6, Robert 07771 333 369
Learn Tai Chi the ancient Chinese martial and health art for all adults.

Baggypants Yoga Class
Masonic Hall, Wellingborough Road, Rushden
8.30am-9.30am, £5 per class, 07873 743256/carole.wyatt@virginmedia.com

Islip Ladies Choir
Thrapston Church Hall
2pm-3.30pm, Barbara 01536 394431

Yoga Classes
Denford Village Hall
9am-10am, £4 per session
Anita Hackney 01832 733274

Titchmarsh Folk Dance Club
The Club Room, High Street, Titchmarsh NN14 3DF
8pm-10pm, £1 inc tea/coffee, Kev Prigmore 01536 514023/
titchmarshfdc@gmail.com

Oundle Ladies Running Group
Oundle pool car park
6.45pm, Jane Walker 01832 272898/
janewalkercakes@icloud.com

Baggypants Yoga
Masonic Hall, Wellingborough Road, Rushden
10am-11am, £5 per session, 01933 382837/07873 743256/
carole.wyatt@virginmedia.com

Spanish Classes
The Old Town Hall, Market Place, Oundle
11am-9pm, £30 per class, 01832 776336/info@antlerlanguages.co.uk

Every Monday (term time)
Praise and Play
St James' Church Thrapston
1.30-2.45pm, refreshments available
Anita 735443

Aqua Aerobic Classes
Oundle School Swimming Pool, Milton Road, Oundle
8.45-9.30am, £25 for 5 sessions
01832 277208/277195

Every Monday, Friday & Saturday (term time)
Otters Swim School Lessons
Oundle School Swimming Pool, Milton Road, Oundle
Mon 3.55pm-6.10pm, Fri 3.55pm-6.10pm, Sat 8.30am-12noon, block booked in advance (£5.50 per lesson)
01832 277208/277195

1st Monday of the month
Oundle & District Royal British Legion Meeting
The Talbot Hotel, Oundle
7pm, Les Starks 01832 270073

Finedon Irthlingborough & District Branch Royal British Legion Branch Meeting
Finedon Bowls Club
7.30pm, Peter Eames 07434 328237

1st & 3rd Monday of the month
Oundle Rotary
The Ship Inn, West Street, Oundle PE8 4EF
6.15pm, Jane Grant 07712 933574.
Bring your skills, experience, enthusiasm, give something back to your community.

2nd Monday of the month
Thrapston & District Royal British Legion Branch Meeting
Thrapston Town Council Centre, 77 High Street, Thrapston
7.30pm, 07876 716 478, ibymes@britishlegion.org.uk

50+ Adventure Club
For further information 01536 505548/
www.fiftyplus northantsadventureclub.org.uk

Royal British Legion Rushden Branch Monthly Meeting
Rushden Football & Social Club, Hayden Road, Rushden
7.15pm, annual fee £17
Jake Baker 07525 441267

Memory Cafe
10.30-11.30am
£1 per person. Light refreshments included. A session for anyone affected by dementia or memory problems. Socialise, share experiences, sing songs from the 1940s and 50s.

3rd Monday of the month
Higham Ladies Group
Adult School, Westfield Terrace Higham Ferrers NN10 8BB
2pm-4pm, 01933 387073
Make some new friends and have fun. Interesting speakers. Supported by East Northamptonshire Council.

3rd Monday of the month (not Dec)
Oundle Munch Club
Oundle Primary School
Come for a roast lunch and pudding £4, call 01832 275353 to book.

2nd & 4th Monday of the month
StitChat
No 1 St Osyth's Lane, Oundle
1.30pm-3.30pm, 01832 770010/
office@oundlebaptist.org.uk

Monday once a month
Woodturning Club
Hardwick Village, nr Wellingborough NN9 5AL
7-10pm, Paul Lawman 01933 674260

Every Monday, Tuesday & Thursday
Yoga for Health and Energy with Jenni Levine
Wollaston Road, Irchester NN29 7DA
6.45pm (Mon), 9.45am (Tue), 6.45pm (Thu), £6, jenni.levine@hotmail.co.uk or 0750865643851

Every Monday & Thursday
Oundle Bridge Club
Fletton House, Fletton Way, Oundle PE8 4JA
7pm start, 01832 273044

Every Tuesday
Pensioners Club
Rushden Hall
2pm-4pm, Secretary David Robinson 01933 313729. Speakers, bingo and whist. All welcome.

Phoenix Gaming Club (Age 12+)
The Rushden Scouts Hall, Brooke Close behind Orbit Tyres (Skinners Lane, Rushden NN10 0XH)
7pm-11pm, membership £5pa, Aron 07739 563657/
aron.phoenix@virginmedia.com

Art Classes (10 weeks)
Knuston Hall, Knuston
7pm-9pm, 10 lessons £100, Jamie 07899 676769

East Northants Classic Motorcycle Club
New Inn Public House, Wymington
Meet around 7.30pm

Sling Walk
11am, first Tuesday of the month there is Sling Library at 10am prior to the walk. Second Tuesday meet at Rushden CC Hayway instead of Higham Ferrers. 01933 410112

Short Mat Bowls
Saxon Hall, Raunds
1.45pm-4pm, £3, 01933 624545

Yoga Class
Whitefriars Infant School, Boughton Drive, Rushden
7.15pm-8.15pm, £5 per session,



Carole 07873 743256/
carole.wyatt@virginmedia.com

Ringstead's Jolly Good Company
Ringstead Shared Church
10am-11am, £4
Music & Movement for over-55s.

Slimming World
Oundle Rugby Club, Occupation Rd
5.30pm and 7.30pm, Nikki 07725 617085. Weekly fee applies. Have fun, make friends and lose weight.

Squidgelets Baby & Toddler Group
Islip Pavilion, Toll Bar Road, Islip
9am-11am, £2 per child, 50p each additional child. Find us on facebook "Squidgelets" or call 07392 756391
Squidgelets is a stay and play session for under 5's and their parent/carers.

Every Tuesday (term time)
Toddlers' Drop In
No 1 St Osyth's Lane, Oundle
9.15am-11.30am, free, 01832 770010/
office@oundlebaptist.org.uk

1st Tuesday of every month
Great Companions (singles 55+)
Rushden Bowls Club, Northampton Road
7-9pm, yearly membership £6, Pat Bazeley 07931 964360

Northamptonshire MS Society Meeting
Barton Seagrave Village Hall, Bertone Road, Barton Seagrave, Kettering NN15 6WF
2pm, Stella Luck 01536 216135/
northamptonshire@mssociety.org.uk

2nd Tuesday of the month
Woodford WI Meeting
Woodford Sports and Social Club
7.30pm, Lynn Sortwell 01832 732740

Higham Ferrers Guided Tour
Groups of 6 minimum.
Trained guides. Tea & cakes, optional. 01933 411191

Nene Valley Ladies
The Full Gospel Church, Rushden
7.30pm, 01933 355478.
Speakers, entertainment and outings.

3rd Tuesday of the month
Rushden and District Stamp Club
Park Road Baptist Church Hall, Rushden NN10 0RG
7.30pm, Malcolm Whitehead 01933 350646.

Every Tuesday & Thursday
Health Walks Stanwick Lakes
10am-11am, free, car park charges
01933 625522/
www.stanwicklakes.org.uk

Ladies Crochet Group
Irthlingborough
2pm-4pm, £10 per session
Contact Ros 07722593637

Every Tuesday, Thursday & Friday
Partner Whist Drive
Rowlett Close, Higham Ferrers (Tuesday & Friday), Windmill Club, Rushden (Thursday). 7.30pm, £2, 01933 313714

Every Tuesday & Saturday
Coffee Mornings
St James Church, Thrapston
10am-12noon, 01832 730019

Last Tuesday of the month
Tea with Friends
St Mary's Church, Ringstead
2pm-4pm, catch up with old friends and to make new ones. Donations to church funds and charities.

Every Wednesday
Tai Chi
Chelveston Village Hall
2pm-3pm, £5, Robert 07771 333369
Learn Tai Chi the ancient Chinese martial and health art for all adults.

New Yoga Class
Masonic Hall
11.20am-12.20pm, £5 a class, 07873743256 or carole.wyatt@virginmedia.com for starting date.

Yoga Classes
Masonic Hall, Rushden
1pm-2.30pm, Daisy 01536 724113/
www.awakenwithyoga.co.uk

Ladies Archery – Pemberton Maid Marions
Pemberton Centre, Rushden
NN10 9YP, Diane 01933 314032/
Nicki 01933 395913

Dog Training, Socialisation and Ringcraft
Halefield, Woodnewton, nr Oundle
Classes from 6.45pm, 01832 293432/oundledogs@aol.com/
www.oundledogs.co.uk

Rainbow Cafe for Tots
Stanwick Lakes
10.30am-12noon and 1.30pm (term time only), £2.50 per child – car park charges apply. 01933 625522/www.stanwicklakes.org.uk

Club Night Apethorpe Tennis Club
From 6pm

Returners to Work
No.1 St. Osyth's Lane
10am-12noon, 01832 770011

Art & Craft Class
Oundle Rural Mind, 1 Herne Park, East Road, Oundle PE8 4BZ
Irene Issitt 01832 275020

Inflatable Fun Session
Oundle School Swimming Pool, Milton Road, Oundle
5pm-6pm (May vary during school holidays), £3 adult & £2.25 child
01832 277208/277195

Cambridge First Certificate in English
The Old Town Hall, Market Place, Oundle
9.30am-12.30pm, £25pw, 01832 776336/info@antlerlanguages.co.uk

French Tuition
The Old Town Hall
From 6pm, £25 per week, 01832 776336/info@antlerlanguages.co.uk

Jelly Babes Toddler Group
Rushden Independent
Wesleyan Church
9.15am

Playheroes Mixed Heroes 0-4 years
Highgate Hall, Elton
9.30am-10.30am, £6 one off session £16 for 3 sessions £29 for 6 sessions (full-term). playheroesinfo@gmail.com /07380204029. Weekly themed, learn through play, run by 2 teachers.

Equanimity Yoga Classes
Queen Victoria Hall, Oundle
5.45pm & 7pm, £8 per class or £45 per 6 classes. £12 drop-in. Visit eqyoga.co.uk or call 07921238701. All levels welcome, including beginners.

Every Wednesday (term time)
Community ICT Classes
Needham Building, Oundle School
SciTec, Glapthorn Road, Oundle
2.30pm-4pm, 01832 277267 to enrol.

Tiny Tots
Oundle C of E Primary School, Glapthorn Road
1.45pm

660 Club (Age 60+)
Two Acre Club, off Milton Road
2.15pm-3.45pm. Afternoon tea and entertainment by Oundle pupils.

Allegra Singers – Three-part Ladies Choir
Music room, Sports Pavilion, Islip
7.30-9.30pm, £3 per session, Veronica 01832 732611/07753 472225

Every alternate Wednesday
Psychic & Spiritual Awareness Development Group
Rushden
1pm-3pm or 7.30pm-9.30pm, £7 per session, Renalta Hall 07712 740495

1st Wednesday of the month
Raunds Coffee Afternoon
Saxon Hall, Raunds
1.30pm-3pm, £1 entry (includes refreshments). Call 01933 622087 to reserve your seat. Meet new friends over a cuppa & entertainment.

Raunds Ladies Group
The Saxon Hall, Raunds
8pm-10pm, Visitors £3.50

Continued on page 12

Continued from page 11

Weekly Wildlife Wanders

Meet at Nene Wetlands Visitor Centre 10.30am, £3 per person, katie.king@wildlifebcn.org/01933 779587. Informal 90-minute guided walk. (Call Visitor Centre to confirm walk is taking place.)

Home Instead Companionship Café

M&S Café (Rushden Lakes) 1pm-3pm (times will change during school holidays), Marie 01933 678775. No booking needed.

1st & 3rd Wednesday of the month Thrapston Country Dancers

St Johns Ambulance Hall 2pm-3.30pm, G Hearnden 01933 622827/ghearnden@tiscali.co.uk

2nd Wednesday of the month Coffee Morning

Raunds Methodist Church 10am-12noon, 01933 383378

2nd & 4th Wednesday of the month Northants Model Makers

Venue TBC
Main meeting starts 7.30ish. First couple free. Bob Humpage 07960 054405/modelmaker@tiscali.co.uk

3rd Wednesday of the month Raunds Film Afternoon

Saxon Hall, Raunds 2pm, £1 includes refreshments. Call 01933 622087 to reserve your seat. We show a great film each month, watch press for details.

Wellingborough Flower Arrangement Society

St Mary's Church Hall, Knox Road, Wellingborough NN8 1HU 7.30pm, £5, Chairman 01933 222326/ Secretary 01604 870275

Higham and Rushden U3A

Pemberton Centre, Rushden 2pm, visitors welcome (£3 charge) www.highamandrushdenu3a.org.uk

British Korean Veterans

The Old Grammarians Club, Oxford Street, Wellingborough 11.45am, Mary Morby 01933 312476/e.m.m@btinternet.com

Raunds & Dist' British Legion

Conservative Club, Raunds 8pm, 01933 625333 for more details. You do NOT have to be ex-services.

4th Wednesday of the month Rushden Pensioners Forum

St Peters Church Hall, Midland Road, Rushden 2pm-4pm, Mary Morby 01933 312476 or e.m.m@btinternet.com

Wednesday & Thursday Free Counselling

No.1 St. Osyth's Lane Oundle By appointment 0793 6015965

Wednesday & Sunday

Ferrers & Rushden Tennis Club

Higham Ferrers Recreation Ground, off Wharf Road 10am-12noon (Sun); 6.30pm-8.30pm (Wed). Per club session £2 adults/ £1 junior (10+), Steve Roberts 01933 461028/07960 846092

Every Thursday

Yoga Class

Whitefriars Infant School, Rushden 7pm-8pm, £5 per class, Carole 07873743256. Suitable for beginners.

Italian Classes

Antler Languages Ltd. The Old Town Hall, Market Place, Oundle 9am-8pm, £25 per class, info@antlerlanguages.co.uk Small classes or private tuition. Professionally qualified teacher.

Tai Chi for Beginners & Improvers

All Saints Church Hall, Midland Road, Wellingborough 10am-11am, £6, dominicrushmore@live.co.uk. Improve your strength and balance. Suitable for all.

Rushden Folk Dance Club

St Mary's Church Hall, Rushden 8-10pm, first visit free, £2 thereafter Val 01933 387327

The Silver Fox Woodturning Club

Dale End Scout Headquarters, Croyland Road, Wellingborough 10am-1pm, £2 all members Debbie 01604 751019

Move to Health

No 1 St Osyth's Lane, Oundle 2.15pm-3pm, 01832 770010/office@oundlebaptist.org.uk

Thursday Drop-In

No 1 St Osyth's Lane, Oundle 10am-2pm, 01832 770010/office@oundlebaptist.org.uk

Little Ducklings Pre-School

Stay & Play 'Tea & Tots' Sessions 1.30pm-3pm, £1.50 per family. 01832 358085

Olde and Sequence Dancing

Woodford Sports and Social Club 7.30pm-9.30pm, £2, Dorothy 01832 732534 or Keith 01832 731896

Equanimity Yoga Classes

Thrapston Plaza 6.10pm & 7.15pm. £8 per class or £45 6 classes. £12 drop-in. Visit eqyoga.co.uk or call 07921238701. All levels welcome, including beginners.

Every Thursday (term time)

Music Makers

Titchmarsh Pavilion 9.30am-10.15am, Joan Strong Centre, Oundle, 11.15am-12noon, Stanwick Village Hall, 2pm-2.45pm,

£4 per child, £2 for siblings, Naomi Cooper on musickmakersnorthants@gmail.com

Little Treasures Tots Group

St Laurence's Church, Stanwick 9.30am-11am, donations to cover costs, Nicki 01933 625658

Community Art Classes

Oundle School Art Department 7.30pm-8.30pm, free classes for people with a disability.

Coffee/tea and biscuits in the Bede House

St Mary's Church, Higham Ferrers 10am-12noon, no charge just a donation to cover costs.

Adult & Child Swim Sessions

Oundle School Swimming Pool, Milton Road Oundle 9.15am-9.45am, booked in advance as a block (£4.75 per lesson) 01832 277208/277195

Alternate Thursdays

Fettledine Afternoon Club

Crow Hill Community CTR, Fettledine Road, Irthlingborough NN9 5XF 2pm-4pm, £2 all ages welcome for tea, cake, chat and activities. Caroline Cross 07527530529

1st Thursday of the month

Royal British Legion Friends & Companionship Support Group Athletics Club, Newton Rd, Rushden 10am-12noon. Pop in for a chat.

3rd Thursday of the month

Painting Class with Nick Baldwin

Chelveston Village Hall 10am-4pm, £17 per session Janet Lowe 01933 389647

Ise & Nene Valley Turners

Cranford Village Hall, Grafton Road, Cranford NN14 4JE 7pm, members free, visitors £5, Peter Bond 01933 741835/peterjbond@btinternet.com

1st and 3rd Thursday of the month

The Fettledine Afternoon Club

Crow Hill Community Centre, Irthlingborough 2pm-4pm, £2, Caroline Cross 07527530529. Activities, speakers, meals out and more.

Thursday Market Day

No.1 Cafe - Free Drop-In

No.1 St. Osyth's Lane 10am-2pm, 01832 770011

Every Friday

Over 60s Club Bingo

Working Men's Club, Higham Ferrers 2-4pm, 01933 741286

Walk and Chat

Rushden Hall Park, under flagpole 10am, Joe Bailey 01832 742195/jebailey@east-northamptonshire.gov.uk

Music Makers

Nene Centre, Thrapston 12.45-1.30pm & 1.45-2.30pm, £4 per child, £2 for siblings, Naomi Cooper 07815 293893/musickmakersnorthants@gmail.com

French/Cambridge

English Classes

The Old Town Hall, Market Place, Oundle 9am-7pm (Fr), 9am-4pm (Eng), £25 per class, 01832 776336/info@antlerlanguages.co.uk

Exercise Circuit Class

Oundle Library garden 10am-11am, £5 per session Eddie McDonald 07896 524422/mcaldric@aol.com Group exercise in which strength, endurance and cardiovascular exercises combine in one session.

Walk and Chat

Meet at The Black Horse Pub, Nassington PE8 6QU 11am, free, Robert Phipps 01780 782558

Every Friday (term time)

Over 60s FREE swim

Oundle School Swimming Pool, Milton Road, Oundle 3pm-3.45pm, 01832 277208/277195

Pre-School Swimming Lessons

Oundle School Swimming Pool, Milton Road, Oundle 1.55-2.25pm & 2.30-3pm, block book in advance (£6.75 per lesson), 01832 277208/277195

Playheroes: Learning Through Play

Highgate Hall, Elton 11am-12 midday, £5 a session (multiple session discount). 07917100690/playheroesinfo@gmail.com. Two teachers who plan a range of interactive activities, linked to a weekly theme.

Sparklers – a 0-5s toddler group

The Bridge Community Office at Whitefriars Primary School, Rushden NN10 9HX 9am-11am, £1 per family, Emma 07957 080074. A safe and friendly place for parents/carers and for their children to play and make friends.

Friday Once a Month

Wildlife Trust Little Bugs Club

Nene Wetlands Visitor Centre, Rushden Lakes 10-11.30am, £3 per child (intro rate), booking essential, 01933 779587/viktoria.marta@wildlifebcn.org

1st Friday of the month

(Check before travelling)

Craft Cafe

Stanwick Lakes 10.30am-1pm, modest charge for some materials, car park charges 01933 625522/www.stanwicklakes.org.uk

3rd Friday of the month

Raunds Tea Dance

Saxon Hall, Raunds 2pm-4.15pm, £4 (50p for raffle) Mrs Wicks 01933 312623

U3A Meeting

The Plaza, Cosy Nook, Thrapston NN14 4PS 10am-12noon, £2 (visitors), free for members, includes refreshments. Guest Speakers each month.

Former Carers Group

No 1 St Osyth's Lane, Oundle PE8 4BG 2pm-3.30pm, free, 01832 770010/office@oundlebaptist.org.uk

3rd Friday of the month

(Check before travelling)

Stanwick Stitches

Stanwick Lakes 10.30am, free, car park charges. 01933 625522 or Pauline on 01933 229817/www.stanwicklakes.org.uk

Every Saturday

Slimming World

Oundle Golf Club, Benefield Road 8.30am, Nikki on 07725 617085. Weekly fee applies. Have fun, make friends and lose weight.



French Classes

The Old Town Hall, Market Place, Oundle 9am-1pm, £25 per class, 01832 776336/info@antlerlanguages.co.uk

Last Saturday of the Month

(not Dec)

Farmers' Market

Market Square, Higham Ferrers 9am-1pm danielle@highamferrers-tc.gov.uk

1st Saturday of the month

Coffee Morning

St Mary's Church, Ringstead 10am-12noon, 01933 624262

Thrapston Farmers' Market

Thrapston High Street 9am-1pm, www.thrapstonfarmersmarket.moonfruit.com

2nd Saturday of the month

Coffee 'n' Cakes

Oundle Methodist Church, Drummingwell Lane 10am-12noon, John Hewitson 01832 272209

WE Watch

Stanwick Lakes 01933 625522/wewatchstanwick@hotmail.co.uk

Oundle Farmers' Market

Market Place, Oundle, 8am-1.30pm, Oundle Town Council 01832 272055

3rd Saturday of the month

Phoenix Group

Stanwick Lakes 01933 625522/wewatchstanwick@hotmail.co.uk

Messy Church

Rushden Salvation Army, Church Street, Rushden 4pm, George Ellitson 01933 313106

Every Saturday & Sunday

Coffee & cakes/Sunday worship

Rushden Independent Wesleyan Church (Entrance Queen Street) Saturday coffee & cakes. 10am-11.30am, Sunday worship 10.45am with children's activities 2nd Sunday in the month 4pm.

Every Sunday

Short & Sweet

St Mary's Church Rushden 2-3pm, Sue Merrifield 01933 358218. Worship for people with additional needs followed by tea, cake & crafts.

2 Course Sunday Carvery

Rushden Bowls Club 12noon, £12 per head. 07850 864537 to book.

Sunday Tea

Fotheringhay Village Hall 3pm-5.30pm, £2.50 for tea & cake. Alexandra Mitchell 01832 226440

Morning Worship

Rushden Mission Church, Wellingborough Road 10.45am, Alan 01933 355302

Morning Church Service

Rushden Heritage Chapel Hall, Park Road, Rushden NN10 0RG 10.30am

Church Service

The Heritage Chapel and Halls, Park Road, Rushden NN10 0RW 10.30am, Cheryl 07969 603958/cheze49@gmail.com

Ringstead Shared Church

Service for all (Communion first Sunday each month), 10.30am Mike Freeman 01933 389796/rbc-rsc@angeladavis.net

1st Sunday of the month

Priceless – for young children and their families

St Laurence's Church, Stanwick 9.30am-10.15am

Every 2nd, 4th & 5th Sunday

Pete's Pack (For children 3+)

St Peter's Church, Newton Bromswold Bible based activities, 10am-11am Helen Lines 07917 001924

3rd Sunday of the month

All Age Worship

St Laurence's Church, Stanwick 9.30am

Leisurely, Sociable Strolls

Pub start – if not lunching do not use pub car park. 10am for 10.30am start. Guests £2 or join for year £8. secretary@northamptonshireshamblers.org.uk

4th Sunday of the month and

Bank Holidays (not Nov-Jan)

King's Cliffe Heritage Centre Bridge Street (Hanging sign when we're open). Open 2pm-5pm

Every Sunday during September

Sunday Teas

Fotheringhay Village Hall 3pm-5.30pm, Tea and cake £2.50 Music in Church on some Sundays. 01832 226440/www.fotheringhayvillagehall.co.uk

Ongoing

Drawing & Painting Classes

Ecton Village Hall, Chelveston Village Hall, Warkton Village Hall & Kingsthorpe Community Centre £65 per term. Derek Geater 01933 381848/dgartweb.sharepoint.com

German Tutorials

Oundle area. Gudrun 07710 189906/gudvolk@gmail.com

Sociology Tuition Classes

Rushden/Higham area £15 p/h, Sylvia 07950156502



To submit your event please contact us via our website in the following format: Date, event, place, time, admission fee (if applicable), contact information, 15 word description.

Pupils commemorate Wellingborough's war hero

Pupils from local primary schools joined the Mayor of Wellingborough at a special ceremony on Tuesday 30th October to commemorate the town's war hero, Major Edward 'Mick' Mannock, a First World War Fighter Ace.

The Mayor of Wellingborough, Cllr Malcolm Ward, officially unveiled the Victoria Cross Paving Stone at Swanspool Gardens.

Pupils were asked to research a World War One war service man or woman from the local area and add this to a fact sheet to be displayed in Swanspool Gardens, until after Remembrance Sunday. Pupils from the schools taking part joined officers and members from the council, along with dignitaries, in unveiling the commemorative stone and heard about the life of Major Edward 'Mick' Mannock.

To celebrate the centenary of the First World War, the Borough Council of Wellingborough established a World War One Working Party, which commissioned the Victoria Cross Paving Stone at Swanspool Gardens, so that members of the local community can remember the life of Major



Edward 'Mick' Mannock. This monument commemorates war heroes who were awarded the prestigious Victoria Cross, which was awarded to Mannock in recognition of bravery of the first order in Aerial combat from 17th June – 22nd July 1918. Although he was not born in the borough, Major Edward 'Mick' Mannock moved to Wellingborough by the age of 24 where he became an active member of the community.

Cllr Martin Griffiths, Leader of the Borough Council of Wellingborough, said: "Wellingborough is rich in history and culture, making it a place for us all to be proud of. We wish to commemorate the past sacrifices made by brave service men and women and celebrate the present and future of our wonderful borough."

Cllr Jon-Paul Carr, chairman of the World War One Working Party, said: "Communities across the country are coming together to commemorate the centenary of the First World War. The World War One Working Party aims to remember those brave service men and women from our borough, and the Victoria Cross Paving Stone celebrates Major Edward 'Mick' Mannock, who spent much time in our town before heading to war."

Cllr Malcolm Ward, Mayor of Wellingborough, said: "I am honoured to be able to officially unveil the Victoria Cross Paving Stone at Swanspool Gardens and I hope that the pupils enjoyed learning about all of the brave men and women from our borough who fought in the First World War."

Thrill of new play equipment in Higham Ferrers

The Town Council in conjunction with Higham Ferrers Tourism Partnership and East Northamptonshire Council has funded three new items of play equipment at Saffron Road Play Area.

The cableway, rope swing and flymobile were officially opened on Monday 29th October by the Mayor of Higham Ferrers, Councillor Jason Smithers. Joining the Mayor were Councillor Wendy Brackenbury, Chair of East Northamptonshire Council and Steven North, Leader of East Northamptonshire Council. Liz Brown of the Tourism Partnership was also pleased to be in attendance.

The Town Council has a general policy towards improving facilities within the town for the youth. The new items of play equipment improve the range offered with a particular focus on being attractive towards older children. The new equipment is proving a popular addition and children are loving the thrill of the cableway.

East Northamptonshire Council Community Facilities Fund awarded £8,000 towards the project, the Tourism Partnership awarded £1,500, with the Town Council funding the balance of the project. The new equipment has been supplied and installed by Wicksteed Leisure. At the official opening children were delighted to receive Wicksteed goody bags.

Leader of East Northamptonshire Council, Steven North, said: "The play equipment at Saffron Road Play Area looks fantastic and provides a wide range of activities for children of all ages to enjoy. I was honoured to join Cllr Brackenbury and Smithers, and other dignitaries to celebrate the opening of the new equipment and I hope children enjoy this for many years to come."

If you haven't already seen the play equipment then go along to Saffron Road for some fun and active play. It is hoped that children will get great enjoyment from the new items and they become firm favourites.

Come and join us for our...

Christmas Fayre

Saturday 10th November
1:30-4:00pm

St Andrews Methodist Church,
Harlestone Road, Duston
NN5 6AB

RAISING FUNDS IN AID OF THE TALBOT BUTLER EAB APPEAL!

Unique cards & crafts Jewellery Handmade chocolates

Choose the perfect Christmas gift from a wide variety of independent stalls!

and much, much more!

Christmas Games Refreshments Raffle

01604 626 927
greenheart@NHCf.co.uk

Northamptonshire Health Charitable Fund supporting Northampton General Hospital Northamptonshire Healthcare Registered charity no: 1165702

KM

KM Media & Marketing
NEWSPAPERS | MAGAZINES | WEBSITES



To advertise in Nene Valley News please call
01522 513515

Nene Valley news Classifieds



ACCOUNTANCY

Jon Essam & Co Ltd

Chartered Accountants

- Self Assessment Tax Returns
- Limited Company services
- VAT & CIS Returns
- New Business Start Ups and advice
- Payroll & Auto-enrolment services
- Sage & Xero specialists
- Free initial consultation

Tel: 01832 730280 Fax: 01832 730281
info@essamca.co.uk www.essamca.co.uk

23 Cottingham Way, Thrapston,
Kettering, Northants, NN14 4PL



CARE HOMES

Rose Cottage Residential Care Home Woodford

For the elderly and dementia

We are a small care home with eight residents only. All rooms are single en-suite and ground floor. We provide respite care and day care.

Telephone 01832 735417
www.rosecottagewoodford.co.uk

Follow us on Facebook



Five Gables Care Home Ringstead

Are you looking for a home for your relative?
Why not visit our home.

We are small and homely, set in a village with links to the A14, A45 and A6. All rooms are single with toilet and basin. We provide respite care and coffee mornings as well as long term Residential and Nursing Care.



Please call us on 01933 460414



HOLIDAYS

J&MB Travel

Winter Coach Holidays

Date	Destination	Days	Hotel	Inc/Theme	Cost
12 Nov	Isle of Wight	5	Trouville	Tinsel & Turkey	265
26 Nov	Eastbourne	5	Alexandra	T&T	240
3 Dec	Corton	5	Warners	T&T	240
23 Dec	Bournemouth	5	Carrington Hotel	Christmas	290
27 Dec	Bournemouth	4	Suncliff	Twixmas	190
18 Jan	Bournemouth	3	Suncliff	All Inclusive	120
4 Feb	Torquay	5	Victoria		200
15 Feb	Bournemouth	4	Suncliff	All Inclusive	180
23 Feb	Folkestone	4	Burstin	Day Trip to France	140

OUR HOLIDAYS INCLUDE:

Coach Travel From Thrapston – Rushden & Wellingbro
En-suite Accommodation Rooms also have colour TV, tea/coffee tray
Meals Full English Breakfast & 3 course Evening Dinner with Tea/coffee
Local Excursions Usually 2 per 5 day holiday
Entertainment in the Hotel Usually 2 nights per 5 day holiday
Prices are Per Person when sharing a Double or Twin Room
Single Room Supplements are charged on some holidays

Call now for our brochure:
01536 202660



HOME SERVICES

KitchenDoor Solutions

Replacement doors and kitchen refurbishment
Doors available in solid wood, painted and laminate finishes



Iain Smith

Tel: 01933 311310

Mob: 07583 869741

SPECIALISTS
SINCE 1980The
WOODWORKS

Kitchen service

SPECIALISTS IN ALL ASPECTS OF KITCHEN REFURBISHMENT

Replacement Kitchen doors
Worktops supplied & fitted
Sinks, Taps & Appliances
Wardrobes built & fitted
Made to measure
Bathroom furniture



Update your existing kitchen to give
you stunning looks, optimised storage
space and Increased accessibility

WWW.WOODWORKS-KITCHENS.CO.UK Call now for a free no obligation quote
Family business est 1999 01933 449239

Ashby's Allsorts

Home Improvement & Handyman Services

Free Estimates
No Job Too Small
Inside and Outside Work Undertaken
Public Liability Insurance
Quality Work at Competitive Prices

Tel: 01832 771020

Mobile: 07584 673767

Email: contact@ashbys-allsorts.co.ukwww.ashbys-allsorts.co.uk

Based in Thrapston, we service a radius of 30ish miles

MP BUILDER

Home Improvements and Maintenance

Reliable, professional and trustworthy

Extensions • Bathrooms/Wetrooms • Plumbing
Kitchens • UPVC Windows & Doors • Carpentry
Roofing & Guttering • Painting & Decorating

Free Competitive Quotes

Tel: 01933 353508 • Mob: 07710 337071

Email: buildwithmp@gmail.comWeb: www.mpbuilder.co.uk

CONSERVATORIES

EG VICTORIAN 3500 BY 3500
FULLY INSTALLED INCLUDING
ALL BRICKWORK AND VAT

£7250

ALL OTHER DESIGNS AND SIZES AVAILABLE
UNBEATABLE PRICES

PHONE NICK ALLINGTON ON

(01832) 734070

WWW.CONSERVATORIESBUILT.CO.UK

!!!GET PLASTERED!!!

For all your plastering needs.
No job too small, no fuss, no nonsense!
Reliable and trustworthy service
at the best possible price.
Call Steve for free, friendly
advice or a free quote.

07703 720138 • 01933 430051

ALAN TAYLOR

For your local plastering

Boarding, Covering, Rendering
All aspects of plastering. Enquiries welcome.
Call Alan for a free quotation or advice on
01933 430098 or 07977 926717

Get the Job Done
HANDYMAN

SMALL JOB SPECIALIST
✓ Experienced ✓ Professional ✓ Quality work
nenevalleyhandyman@gmail.com

07737 023 330

Simon Vale

Painter & Decorator

High quality • Competitive prices
Free estimates

07568 587367 or 01933 228671



HOME SERVICES

Plumber — local & fast!

RGJ PLUMBING
AND HEATING

Plumbing

- Full bathroom installation (inc carpentry & tiling)
- Burst pipes & leaks
- Toilet repair/replace
- Taps, sinks repair/replace
- Showers repair/replace & pumps

Heating

- Full central heating installation
- Boiler servicing/breakdowns
- Landlord safety certificates
- Power flushing
- Radiators & valves
- Pumps & cylinders



No call-out charge!
City & Guilds Qualified
All work guaranteed



01933 588005 or 07921 469471

Part P
Registered
A. SEATON
ELECTRICAL LTD

- Rewires, fuse board replacements
- Fault finding, extra sockets & lights
- Testing, inspection & certification
- No job too small, free estimates given

Email: seatonsparky@gmail.com
T: 01933 778504 M: 07952 249885

DC Heating

SAFE IN OUR HANDS
YOUR LOCAL
PROFESSIONAL HEATING
ENGINEERS YOU
CAN TRUST

REPAIRS
SERVICING
INSTALLATIONS

Phone today for a free quotation on
Tel: 01933 392 719
www.dcheatingengineers.co.uk



CLEAR THE JUNK

The Rose Clearance Service

Full - Part - Single Items.
Fully Registered and Insured. Est 30 years.
www.rose-clearance-services.co.uk

Tel: 07761 248266/07443 605859



PGR

Plumbing & Heating

Tel: 01933 698116

24 Hr Emergency Service

Email: pgrplumbing@btinternet.comWeb: www.pgrplumbing.co.uk

Specialists in
Gas Installations
Gas Servicing & Maintenance
Landlords Gas Safety Certificates
Central Heating Powerflushing
Household Plumbing & Drainage

ENSIGN GAS ENGINEERS

GAS FIRES, GAS COOKERS
INSTALLATION, SERVICE AND REPAIR

Recommended service agent for:
Focal Point Fires, Superior Fires and Eco Fires

NO CALL OUT CHARGE

Tel: 01933 318327



PLUMBER

All plumbing work undertaken - No call out charge

Toilet repairs - Dripping overflows - Leaks and bursts
Garden taps installed - Tap repairs and replacements
Radiators supplied and fitted

20 years' experience

Call Tim 01832 358248 or 07957 550660



**COSTUME JEWELLERY AND
ALL UNWANTED JEWELLERY
BROKEN OR PERFECT BOUGHT.
BROKEN GOLD ITEMS ALWAYS BOUGHT.
ALSO OLD WATCHES AND COINS.
ANY QUANTITY. JILL WILDING 01832 737803.**

HANDY HERBERTS

Home & Garden Maintenance

All garden and exterior maintenance work
undertaken including professional gutter
cleaning, graveling, fencing, patios fitted,
external painting and hedge trimming.
01933 563365 or 07725 225214
handyherberts@yahoo.co.uk

DONNO R G
TV/AERIAL SERVICES

Est 1981
TV/DVD repairs, servicing at your home if possible.
Full installation service available. Freesat and
Freeview digital aerials supplied and installed
from £80. All work guaranteed. No call out
charge locally. Free estimates on repairs.

Tel: 01933 356680

Easyflow Plumbing

Plumbing & Heating Services

Bathroom Installations
Heating Systems
General Household Plumbing

Tel: 07840 254 025 or 01604 946896

roberttradford77@gmail.comPatsabout Locks 24 Hour
Locksmith

Residential & Commercial Fittings
On Call Maintenance • Fast Response Time
New Locks Fitted on Site • Emergency Door Opening

Patsabout.locks@gmail.com
07415374045 • www.patsaboutlocks.com

JOBS BOARD

OUNDLE

School

We are recruiting for the following roles:

Science Technician

Head Chef

Chef

General Catering Assistant

School Cleaner

Communications & Marketing Officer

Registered Nurse

For full details and to apply visit:
www.oundleschool.org.uk/employment-opportunities
or contact recruitment@oundleschool.org.uk / 01832 277196

The School is committed to safeguarding and promoting the welfare of children and young people and expects all staff and volunteers to share this commitment. The successful applicant will be required to undergo child protection screening appropriate to the post including checks with past employers and the Disclosure and Barring Service.

Get paid to deliver the newspaper

Good rates of pay
£££'s

Distributors required in Oundle & Raunds

Flexible hours (on allocated day)

Must be over 13 years

Telephone 0800 917 4124
or visit www.whistl.co.uk/careers
and see newspaper delivery

whistl
doordrop media



REMOVALS

David Mallett

REMOVALS & GENERAL HAULAGE

For a **FREE** quotation call

Mob: 0788 996 8064

Tel: 01832 731570

Local Friendly Service



Nene Valley news

UPCOMING FEATURES

17th November
Christmas/Good Food

1st December
Thrapston Feature

15th December
Christmas

12th January
Rushden Feature



PUBLIC NOTICES

NORTHAMPTONSHIRE COUNTY COUNCIL
ROAD TRAFFIC REGULATION ACT 1984
– SECTION 14

THE NORTHAMPTONSHIRE COUNTY COUNCIL
(WEST STREET, OUNDLE)

(TEMPORARY PROHIBITION OF THROUGH TRAFFIC) ORDER 2018

NOTICE IS HEREBY GIVEN that Northamptonshire County Council intend, not less than seven days from the date of this Notice, to make an Order the effect of which will be to prohibit traffic from proceeding along that length of West Street, Oundle as set out below.

LENGTH OF ROAD TO WHICH RESTRICTION APPLIES: That length of West Street, Oundle from outside number 81 West Street.

REASONS FOR RESTRICTION: The restriction is required for safety during relaying of pipe for Anglian Water.

PERIOD OF CLOSURE: The proposed Order will come into effect on 26th November 2018 and will continue in force for a period of eighteen months. An application may be made for the approval of the Secretary of State for Transport for the Order to be extended if this proves necessary. However, the restriction specified will have effect only at such times and to such an extent as is indicated by the display of signs prescribed by the Traffic Signs Regulations and General Directions 2016.

EXPECTED DURATION: It is expected that the road will be restricted until 28th November 2018.

ALTERNATIVE ROUTES: Use Stoke Road.

Dated this 3rd day of November 2018
DEBBIE CARTER-HUGHES
Head of Property & Planning Law

PKG/T18/441

If you require any further information please contact Gary Thorp on 01604-883400.

NORTHAMPTONSHIRE COUNTY COUNCIL
ROAD TRAFFIC REGULATION ACT 1984
– SECTION 14

THE NORTHAMPTONSHIRE COUNTY COUNCIL
(SHIP LANE, OUNDLE)

(TEMPORARY PROHIBITION OF THROUGH TRAFFIC) ORDER 2018

NOTICE IS HEREBY GIVEN that Northamptonshire County Council intend, not less than seven days from the date of this Notice, to make an Order the effect of which will be to prohibit traffic from proceeding along that length of Ship Lane, Oundle as set out below.

LENGTH OF ROAD TO WHICH RESTRICTION APPLIES: That length of Ship Lane, Oundle for its entire length.

REASONS FOR RESTRICTION: The restriction is required for safety during sewer connection works.

PERIOD OF CLOSURE: The proposed Order will come into effect on 3rd December 2018 and will continue in force for a period of eighteen months. An application may be made for the approval of the Secretary of State for Transport for the Order to be extended if this proves necessary. However, the restriction specified will have effect only at such times and to such an extent as is indicated by the display of signs prescribed by the Traffic Signs Regulations and General Directions 2016.

EXPECTED DURATION: It is expected that the road will be restricted until 7th December 2018.

Dated this 3rd day of November 2018

DEBBIE CARTER-HUGHES

Head of Property & Planning Law

PKG/T18/424

If you require any further information please contact Gary Thorp on 01604-883400.

NORTHAMPTONSHIRE COUNTY COUNCIL

ROAD TRAFFIC REGULATION ACT 1984
– SECTION 14

THE NORTHAMPTONSHIRE COUNTY COUNCIL
(SEATON ROAD, HARRINGWORTH)

(TEMPORARY PROHIBITION OF THROUGH TRAFFIC) ORDER 2018

NOTICE IS HEREBY GIVEN that Northamptonshire County Council intend, not less than seven days from the date of this Notice, to make an Order the effect of which will be to prohibit traffic from proceeding along that length of Seaton Road, Harringworth as set out below.

LENGTH OF ROAD TO WHICH RESTRICTION APPLIES: That length of Seaton Road, Harringworth from Wakerley Road to St John the Baptist Church.

REASONS FOR RESTRICTION: The restriction is required for safety during installation of new gas connection.

PERIOD OF CLOSURE: The proposed Order will come into effect on 19th November 2018 and will continue in force for a period of eighteen months. An application may be made for the approval of the Secretary of State for Transport for the Order to be extended if this proves necessary. However, the restriction specified will have effect only at such times and to such an extent as is indicated by the display of signs prescribed by the Traffic Signs Regulations and General Directions 2016.

EXPECTED DURATION: It is expected that the road will be restricted until 23rd November 2018.

ALTERNATIVE ROUTES: Use Bottom Road, Red Hill, Seaton Road, Barrowden Road, Morcott Road, Main Street, Wakerley Road, Barrowden Road, Harrington Road and Wakerley Road.

Dated this 3rd day of November 2018

DEBBIE CARTER-HUGHES

Head of Property & Planning Law

PKG/T18/447

If you require any further information please contact Gary Thorp on 01604-883400.

NORTHAMPTONSHIRE COUNTY COUNCIL

ROAD TRAFFIC REGULATION ACT 1984
– SECTION 14

THE NORTHAMPTONSHIRE COUNTY COUNCIL
(SLIPTON LANE, SLIPTON)

(TEMPORARY PROHIBITION OF THROUGH TRAFFIC) ORDER 2018

NOTICE IS HEREBY GIVEN that Northamptonshire County Council intend, not less than seven days from the date of this Notice, to make an Order the effect of which will be to prohibit traffic from proceeding along that length of Slipton Lane, Slipton as set out below.

LENGTH OF ROAD TO WHICH RESTRICTION APPLIES: That length of Slipton Lane, Slipton from High Street to Main Street.

REASONS FOR RESTRICTION: The restriction is required for safety during vegetation works.

PERIOD OF CLOSURE: The proposed Order will come into effect on 28th November 2018 and will continue in force for a period of eighteen months. An application may be made for the approval of the Secretary of State for Transport for the Order to be extended if this proves necessary. However, the restriction specified will have effect only at such times and to such an extent as is indicated by the display of signs prescribed by the Traffic Signs Regulations and General Directions 2016.

EXPECTED DURATION: It is expected that the road will be restricted for one day.

ALTERNATIVE ROUTES: Use High Street, The Green, Lower Street and Kettering Road.

Dated this 3rd day of November 2018

DEBBIE CARTER-HUGHES

Head of Property & Planning Law

PKG/T18/461

If you require any further information please contact Gary Thorp on 01604-883400.

NORTHAMPTONSHIRE COUNTY COUNCIL
ROAD TRAFFIC REGULATION ACT 1984
– SECTION 14

THE NORTHAMPTONSHIRE COUNTY COUNCIL
(NEWTON LANE, SUDBOROUGH)

(TEMPORARY PROHIBITION OF THROUGH TRAFFIC) ORDER 2018

NOTICE IS HEREBY GIVEN that Northamptonshire County Council intend, not less than seven days from the date of this Notice, to make an Order the effect of which will be to prohibit traffic from proceeding along that length of Newton Lane, Sudborough as set out below.

LENGTH OF ROAD TO WHICH RESTRICTION APPLIES: That length of Newton Lane, Sudborough from A6116 to Sudborough Road.

REASONS FOR RESTRICTION: The restriction is required for safety during Anglian Water repairs.

PERIOD OF CLOSURE: The proposed Order will come into effect on 21st November 2018 and will continue in force for a period of eighteen months. An application may be made for the approval of the Secretary of State for Transport for the Order to be extended if this proves necessary. However, the restriction specified will have effect only at such times and to such an extent as is indicated by the display of signs prescribed by the Traffic Signs Regulations and General Directions 2016.

EXPECTED DURATION: It is expected that the road will be restricted for one day.

ALTERNATIVE ROUTES: Use A6116 and Sudborough Road.

Dated this 3rd day of November 2018

DEBBIE CARTER-HUGHES

Head of Property & Planning Law

PKG/T18/442

If you require any further information please contact Gary Thorp on 01604-883400.

NORTHAMPTONSHIRE COUNTY COUNCIL

ROAD TRAFFIC REGULATION ACT 1984
– SECTION 14

THE NORTHAMPTONSHIRE COUNTY COUNCIL
(HIGH STREET, TWYWELL)

(TEMPORARY PROHIBITION OF THROUGH TRAFFIC) ORDER 2018

NOTICE IS HEREBY GIVEN that Northamptonshire County Council intend, not less than seven days from the date of this Notice, to make an Order the effect of which will be to prohibit traffic from proceeding along that length of High Street, Twywell as set out below.

LENGTH OF ROAD TO WHICH RESTRICTION APPLIES: That length of High Street, Twywell from outside Blackwell Barn.

REASONS FOR RESTRICTION: The restriction is required for safety during gas service works.

PERIOD OF CLOSURE: The proposed Order will come into effect on 3rd December 2018 and will continue in force for a period of eighteen months. An application may be made for the approval of the Secretary of State for Transport for the Order to be extended if this proves necessary. However, the restriction specified will have effect only at such times and to such an extent as is indicated by the display of signs prescribed by the Traffic Signs Regulations and General Directions 2016.

EXPECTED DURATION: It is expected that the road will be restricted until 7th December 2018.

ALTERNATIVE ROUTES: Use Slipton Lane, Islip Road, Thrapston Road and Lower Street.

Dated this 3rd day of November 2018

DEBBIE CARTER-HUGHES

Head of Property & Planning Law

PKG/T18/465

If you require any further information please contact Gary Thorp on 01604-883400.

NORTHAMPTONSHIRE COUNTY COUNCIL

ROAD TRAFFIC REGULATION ACT 1984

THE NORTHAMPTONSHIRE COUNTY COUNCIL
(A427 STATION ROAD, OUNDLE) (BRIDGE No. 1093)
(PROHIBITION OF VEHICLES OVER 3 TONNES
MAXIMUM GROSS WEIGHT
& 2.1 METRES WIDTH RESTRICTION, &
REVOCATION OF 18 TONNES RESTRICTION
MILL ROAD, OUNDLE AND BARNWELL ROAD,
BARNWELL) ORDER 2018

NOTICE IS HEREBY GIVEN that Northamptonshire County Council propose to make an Order under Sections 1 to 5 and part IV of Schedule 9 of the Road Traffic Regulation Act 1984 ("the Act") to prohibit any vehicle over 3 tonnes maximum gross weight and 2.1 metres in width from proceeding along that length of the A427 Station Road, Oundle for the full span of Bridge Number 1093 (Oundle North Bridge), which extends between a point 109 metres southwest of the centre line of Laxton Drive, to a point 55 metres north east of the centre line of Riverside Maltings – a distance of 269 metres.

A further effect of the order is the revocation of the existing prohibition of heavy commercial vehicles over 18 tonnes (maximum gross weight) currently in place on Mill Road, Oundle and Barnwell Road, Barnwell.

A COPY of the proposed Order, together with a plan showing the exact lengths of roads to which it relates and a statement of the Council's reasons for proposing to make the Order, may be inspected at Oundle Library during their normal opening hours or at One Angel Square, Angel Street, Northampton, NN1 1ED during normal office hours.

OBJECTIONS to the proposed Order, stating the grounds on which they are made should be sent in writing to the Traffic Orders Section, One Angel Square, Angel Street, Northampton, NN1 1ED by 26th November 2018.

Dated this 3rd day of November 2018

DEBBIE CARTER-HUGHES

Head of Property & Planning Law

PKG/T1755

NORTHAMPTONSHIRE COUNTY COUNCIL

ROAD TRAFFIC REGULATION ACT 1984

THE NORTHAMPTONSHIRE COUNTY COUNCIL
(EAST NORTHAMPTONSHIRE DISTRICT)
(WAITING AND LOADING RESTRICTIONS AND
ON-STREET PARKING PLACES) (CONSOLIDATION)
ORDER 2009
(AMENDMENT No. 16) ORDER 2018

NOTICE IS HEREBY GIVEN that Northamptonshire County Council intends to make an Order under Sections 1 to 5 and Schedule 9 of the Road Traffic Regulation Act 1984 ("the Act") to amend "The Northamptonshire County Council (East Northamptonshire District) (Waiting and Loading Restrictions and On-Street Parking Places) (Consolidation) Order 2009" as specified in the Schedule below.

A COPY of the proposed draft Order, together with plans showing the exact lengths of roads to which it relates and a statement of the Council's reasons for proposing to make the Order, may be inspected at Rushden, Higham Ferrers, Raunds and Oundle Libraries during normal opening times or at One Angel Square, Angel Street, Northampton, NN1 1ED.

OBJECTIONS to the proposed Orders, stating the grounds on which they are made should be sent in writing to the Traffic Orders Section, One Angel Square, Angel Street, Northampton, NN1 1ED by 26th November 2018.

Dated this 3rd day of November 2018

DEBBIE CARTER-HUGHES

Head of Property & Planning Law

PKG / 1773

SCHEDULE

PROPOSED NO WAITING AT ANYTIME
RESTRICTIONS (DOUBLE YELLOW LINES)

High Street South, Rushden – Southwest side, extension of the existing double yellow lines by 10 metres outside No. 126; **Crown Way, Rushden** – Southwest side, from the roundabout of the MCE building to a point outside Signal House; **Crown Way, Rushden** – Northeast side, from the access to Morrison's Distribution Centre to a point outside Signal House, including the turning area; **Market Square, Higham Ferrers** – South, Northeast & West sides, various sections within the Market Square parking area outside Nos. 9 – 12; **Herne Road, Oundle** – Both sides, extension of the existing double yellow lines at the junction by 10 metres; **Midland Road/Kimbolton Road, Higham Ferrers** – Southwest side, around the junction up to the existing zig-zag markings on Kimbolton Road; **Midland Road/Kimbolton Road, Higham Ferrers** – East & South side, around the junction up to a point opposite No.69 & 71 Kimbolton Road; **Hill Street/Brook Street (service road), Raunds** – Northwest & Southwest side, from a point outside Nos.9&11 around the junction into Brookhill Court; **West Street, Stanwick** – North side, between the existing double yellow lines outside Nos. 19 - 21.

EAST NORTHAMPTONSHIRE LOCAL PLAN
PART 2: DRAFT PLAN CONSULTATION

The Local Plan Part 2 is the district-wide site specific statutory development plan, prepared by East Northamptonshire Council to guide the determination of planning applications. It supports the strategic policies of the Local Plan Part 1, the North Northamptonshire Joint Core Strategy 2011-2031. When adopted, the Part 2 Plan will form part of the statutory development plan for East Northamptonshire.

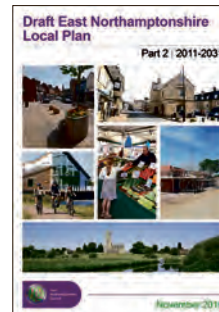
The draft Plan is now published for consultation. This non-statutory consultation provides the first chance for stakeholders (statutory consultees, interest groups and members of the public) to review and comment on the draft Local Plan text; both its policies and supporting text.

In line with the normal statutory requirements, the consultation will take place over six weeks, starting Friday, 2 November 2018 and ending on Monday, 17 December 2018. Consultation documents including an online response form can be found at www.east-northamptonshire.gov.uk/consultation.

Alternatively, paper copies are available to view at:

- Customer Service Centre, Cedar Drive, Thrapston, NN14 4LZ (8.45am – 5pm Mon, Tue, Thu, Fri; 9.45am – 5pm Wed)
- Customer Service Centre, Newton Road, Rushden, NN10 0PT (9am – 4.30pm Mon, Tue, Thu, Fri; 9.45am – 4.30pm Wed)
- Customer Service Centre, Oundle Town Council offices, Fletton House, Glaphthorn Road, Oundle, PE8 4JA (10am-1pm, Mon to Fri)
- Libraries at Oundle, Thrapston, Higham Ferrers, Irthlingborough and Raunds (opening times and other details are available from Northamptonshire County Council)

Representations for the consultation are invited and must be received by 4.30pm on Monday, 17 December 2018. Please state clearly the paragraph or policy to which any comment relates. All comments received by the deadline will be considered. A summary of responses and issues arising from the consultation will be presented to Planning Policy Committee early in 2019.



Please submit your comments in writing using the online form or by posting to Planning Policy Team, East Northamptonshire Council, Cedar Drive, Thrapston, NN14 4LZ

If you have any questions regarding the Local Plan Part 2, please contact the team on 01832 742010 or email planningpolicy@east-northamptonshire.gov.uk.

Paul Bland, Head of Planning Services

3 November 2018

KM
KM Media & Marketing

To advertise in
Nene Valley News call

01522 513515

480 pushchairs recovered in operation to tackle lorry theft

Fourteen people have been arrested and 480 pushchairs recovered during an operation to tackle theft from lorries.

Operation Barric was set up in response to an increase in lorries with canvas sides being attacked at lorry parks and lay-bys across the East Midlands.

The operation

included officers from Northamptonshire, Derbyshire, Nottinghamshire and South Yorkshire. Officers from across all four forces, including Automatic Number Plate Recognition

(ANPR) experts, worked together during the operation last week to share information and intelligence, link crimes to vehicles and track suspect vehicles.

Last week, 480 pushchairs were stolen from a lorry in Northamptonshire. As part of the operation, they were recovered, with five people arrested in connection with their theft. Nine others were arrested during the week for various offences relating to lorry theft.

ANPR Manager, Jamie Culverhouse, said: "Operation Barric was designed to utilise resources from across a number of forces in order

to tackle theft from lorries by organised crime groups.

"Last week saw some fantastic results including the 14 arrests made, the 480 recovered pushchairs,

six vehicles recovered and a number of suspicious vehicles identified and stopped.

"Op Barric is a year-round operation and I look

forward to more success in the coming months as we close in on criminals who think targeting these vehicles is an acceptable way to make money."



Record visitors attend Rushden 1940s weekend

Held over the weekend of 20th/21st October, the annual Rushden 1940s event was held at Rushden Station and organised by Rushden Historical Transport Society. The glorious October weather helped to attract a record number of visitors to the event. Visitors were treated to a whole day of entertainment at the station, attractions

included living history displays from FoxHole44, Ben Pathfinder, and Allied Assortment. The local organisation Family at War provided a demonstration of 1940s cookery and displays of the type of foods available in this period, whilst there were examples of both military and civilian vehicles from the period on display.

Professional 1940s entertainers provided music whilst a vintage

trade fair provided visitors with the opportunity to purchase clothing and household items from times gone by.

A large number of re-enactors, some of whom had travelled several hundred miles to attend the weekend, supported the event.

A considerable amount of monies was raised for the RBL Poppy Appeal and for the Society's funds.


furniture centre

LIVING | DINING | KITCHEN | OFFICE | BEDROOM | BESPOKE | ACCESSORIES | UPHOLSTERY



Visit our showroom! Pytchley Lodge Road, Kettering, NN15 6JQ

www.thefurniturecentre.com | 01536 414121 | sales@thefurniturecentre.com

