

# Nene Valley

## news

YOUR LOCAL INDEPENDENT COMMUNITY  
NEWSPAPER FOR EAST NORTHAMPTONSHIRE

Telephone:  
01522 692542

We want to hear from you,  
so please submit your  
news story or event at  
www.nenevalleynews.co.uk

INSIDE  
this issue



**FLETTON FIELD  
CAMPAIGN REFRESHED  
AS ELECTIONS APPROACH**

**PAGE 07**



**PLANTING  
KINDNESS,  
GROWING  
COMMUNITY**

**PAGE 09**

### NEWS IN BRIEF

#### House prices rise

The Halifax have released the latest findings in their House Price Index with results showing that the average house price in the UK has risen by 1.1% in the last month to £254,606.

In the most recent quarter (January to March 2021) house prices rose by 0.3% compared to the previous quarter (October to December 2020), and have grown by 6.5% since March 2020.

Not only are property prices increasing, but the number of transactions that were completed in February are up too, rising by 23% from January levels to 147,050.

A longer-term increase can also be seen when looking at the most recent quarter (December 2020 to February 2021) and comparing it to the preceding quarter (September to November 2020) and seeing the number of transactions is now 23.3% higher.

The annual increase in transactions is a whopping 56.2% higher than February 2020.

Mortgage approvals fell for the third consecutive month but are still 19.5% higher than twelve months ago.

## RUSHDEN SEA CADETS GET ACTIVE TO FIGHT LOCKDOWN BLUES

Volunteer staff and youngsters from Rushden Sea Cadets have found a great way to keep themselves and their supporters active in a bid to improve their physical and mental wellbeing, while raising essential sponsorship money. Their Tokyo 2021 Olympic Challenge also coincided with World Health Day.

The Olympic Games will be taking place in Tokyo this summer, after being postponed last year due to the coronavirus pandemic, so the Sea Cadets decided to set themselves an incredible challenge.

Together with their supporters, they have been working as a team to walk, cycle, row, swim or run from Rushden to Tokyo – with the aim of getting there before the opening ceremony on 23rd July. That's a total distance of 8,900 miles, travelling (virtually) through 24 countries!

David Pickles, who is Chairman of Rushden Sea Cadets and the challenge

organiser said: "The main purpose of this challenge is to motivate people to get outside and keep active.

"The pandemic is having an impact on everybody's lives and regardless of age, this has been a challenge for many of us, including isolation from friends, being confined to our homes, or worries that family or friends might get sick – and all of this is naturally taking its toll on our wellbeing."

As well as boosting their physical and mental wellbeing, the challenge is also raising sponsorship money to help fund a series of fun activities for the cadets once lockdown restrictions ease.

As with many charities, fundraising opportunities have been extremely limited over the past 12 months and the group relies on donations to be able to keep supporting local youngsters.

They've raised almost £500 so far, but if you'd like to help them out you can visit their JustGiving page online at: [www.justgiving.com/crowdfunding/rushdenscolympicchallenge](http://www.justgiving.com/crowdfunding/rushdenscolympicchallenge)

Rushden Sea Cadets is part of the national Marine Society and Sea Cadets Charity – a youth organisation that provides a wide range of fun activities to over 15,000 youngsters aged



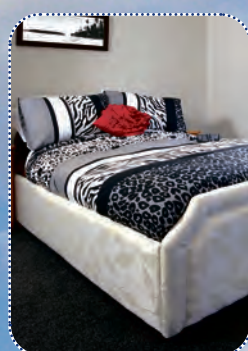
10-18, at almost 400 locations throughout the UK.

There is so much more to Sea Cadets than you'd imagine – as well getting involved in fun and challenging activities, such as sailing,

windsurfing, rowing and power boating, they also learn about aviation, cyber security, catering and many other activities – all whilst gaining confidence and learning skills for life.

**You can learn more about Rushden Sea Cadets by visiting their webpage [www.sea-cadets.org/rushden](http://www.sea-cadets.org/rushden) or find them on Facebook @SeaCadetsRushden or Instagram @SeaCadetsRushden**

SHOWROOMS: 69-71 WASHBROOK RD • RUSHDEN • NORTHANTS NN10 6UR [action2mobility.co.uk](http://action2mobility.co.uk)



Wet rooms  
and easy access  
bathrooms  
supplied  
and fitted

**Action<sup>2</sup>Mobility**  
THE REGION'S LEADING MOBILITY AID CENTRE

Phone us for  
delivery if you're  
shielding\*

Simply make your choice and  
phone through your order to  
**0800 698 2588**

\*Limited to 25 miles radius from our  
showrooms in Rushden

CALL FREE: 0800 698 2588

MON-FRI 8am-4.30pm

FREE PARKING

Stockist of Cosyfeet and Sandpiper shoes

STAIRLIFTS: FULLY GUARANTEED, FREE HOME SURVEY



# WILDLIFE NEWS

WORDS BY  
ROY BURRELL

Combining hobbies sometimes used to mean restricting what we could do; for example it was not easy to photograph birds at night. Nowadays the equipment is easier to use, and often cheaper to purchase, and so we can more easily find out what is happening in 'our own backyards'.

Think of the bright colours we can see during the day; reds and yellows can help find a mate, or provide warning that food is perhaps rather foul-tasting if eaten – or even actually poisonous. New equipment has brought many improvements, such as the use of ultraviolet light, which did not show as visible rays and so gave an added safety feature (not surprisingly creatures of the night already knew about that, so it was not a cure-all system!).

But it reminded us of this "night world" going on all the time without us thinking about it, and this group included one of the largest classes of insect – moths. We all know what we think we mean when we talk about moths, but those which might damage our clothes are a tiny fraction of the huge

number of insect species around; the culprits there are the caterpillars (larvae), because one feature of the lifestyle of insects is that they pass through four distinct phases in their life, though sometimes the steps are not always clear: eggs, caterpillar, pupa (chrysalis) and adult insect (imago). It is a pity from our point of view that while butterflies can show off their brilliance in the day when there is plenty of light, many moths are rarely seen because they live their lives in the dark hours; the intricate patterns on their wings look as if they are a waste of energy but it obviously works.

In colour, moths range from the red-and-black contrast of the tiger moths through to the soft, fluffy-looking white plume moths and those doing much better camouflage jobs, rarely identified if they should end up in our gardens. There are also some which have gone to the length of producing patterns with frightening-looking faces on their wings, but with this vast number of species you will need one more purchase – a suitable identification guide.

# GENEALOGY JOTTINGS

WORDS BY  
JAN PEARSON

In the last Jottings, I mentioned that a memorial to someone might be in the place where the person was born. Well, don't be confused if this is somewhat different to that which is mentioned in a census, for instance.

In a census, it might be that a parent will record that their child was born in one place but, after that child has left home and has to report where they were born, it could be remembered differently. For instance, a child born in Cotterstock might have moved when they were just a few months old to Oundle. The parent will record the place of birth as Cotterstock but the child, upon leaving home, records it as Oundle as it is the only place that they have ever known as home. Confusing!

Oh yes – another thing to look out for in censuses is a change of name, either intentional or accidental. Spelling did not settle down until as late as the beginning of the 20th century so the surname Mascall could also be Maskell,

Maskal etc if you get my drift.

Then there are nicknames. My great Aunt Nell, I found out years later, was actually Florence Mary Helen and appears with her "Sunday name" on the censuses and school records. This brings me on to initials. My father was known as Gerald – or even Gerry. However, his real name was Frederick Gerald and he signed everything with the initials F.G. His entry in the Post Office employment records has him as F.G. and the 1939 Register has him as Frederick G. So, unless you were certain of his surname, you would not easily find him. Mind you, even that was open to spelling variations.

Therefore, keep an open mind when checking the censuses and do not be afraid of asking for a second opinion!

**Genealogy Specialists, Tracing Our Past, Discovering Our Genes (TOP DOG)**  
[www.genealogy-specialists.com](http://www.genealogy-specialists.com)

# EDITOR'S NOTES

Welcome to this issue of Nene Valley News. It has been wonderful to see the re-opening of non-essential shops and hospitality making the most of the, if not warm at least sunny, conditions. It does give a whole new meaning to wrapping up warm to head outside but it takes more than a chill to put people off being able to meet up and socialise with friends once more.

As I was driving home on Monday night it was so heartening to see converted beer gardens, former car parking areas and pavements busy with customers.

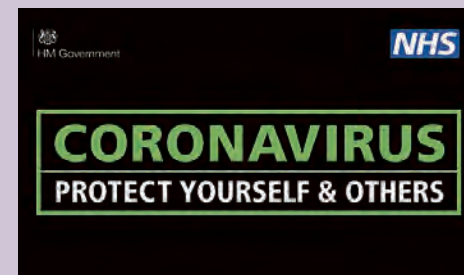
In this issue we have a story about The Willow and Brook in

Apethorpe. Jim and Suzanne Miller took on the business in January 2020 after it had been closed for three years. Needless to say the last 12 months have not been easy for them but their hard work has earned them a cluster of regional and national food and hospitality awards.

They and all the other local businesses in your village or high street now need your support to get back on their feet. Local businesses have done a sterling job in catering for deliveries, takeaways and adapting their services for the pandemic and while restrictions have eased, there are still requirements for us to observe social, travel and

working restrictions for many weeks to come. Supporting local businesses cuts food miles, keeps income within the community and ensures that vital services remain accessible for all.

Finally, as gardens begin to show more of their spring colour we are pleased to include a report on Blooming Oundle, a new initiative to make the town even more attractive. Gardening has been an even greater pastime to distract and comfort people during these last 12 months and this group has certainly gathered plenty of support for their plans this year. Read more on page 9 and have a wonderful rest of the month.



**Nene Valley Dentures**  
Mr Karl Brown Dip CDT RCS (Eng)



**Bespoke Dentures**

Registered Denturist  
Private clinic located in Islip

Repairs, relining, and new dentures provided by appointment only.

Telephone or email for information:

T: 07597 358516

E: [nenevalleydentures@gmail.com](mailto:nenevalleydentures@gmail.com)  
[www.nenevalleydentures.co.uk](http://www.nenevalleydentures.co.uk)

**NICHOLSON ARBORICULTURAL SERVICES**

**All aspects of tree work undertaken**

- FREE QUOTES
- No job too small
- Rushden
- Northants

JAMES NICHOLSON  
TEL: 01933 358079  
MOB: 07495 944880



[JAMESNICHOLSON75@YAHOO.CO.UK](mailto:JAMESNICHOLSON75@YAHOO.CO.UK)

Quality Repairs To Windows & Doors

**THRAPSTON GLAZING**  
Est 85 **WINDOW & DOOR REPAIRS**

FREE QUOTES FREE GENUINE ADVICE

**QUALITY REPAIRS TO ALL MAKES OF WINDOWS, DOORS AND CONSERVATORIES SUPPLIED AND FITTED BY ANY COMPANY.**

\*\*\*  
**REPLACEMENT GLASS UNITS, NEW LOCKS, NEW HINGES, NEW LETTERBOXES, NEW HANDLES ETC... WITH COMPLETE FITTING SERVICE**

\*\*\*  
WE ALSO SERVICE WINDOWS, DOORS AND PATIO DOORS ADJUSTING AND LUBRICATING AS WE GO, BADLY ADJUSTED DOORS ARE THE MAIN REASON FOR LOCK FAILURE.

\*\*\*  
WE STOCK AND SOURCE THOUSANDS OF SPARE PARTS TO SUIT ALL MAKES OF WINDOWS AND DOORS

\*\*\*  
OTHER SERVICES INCLUDE, CUT GLASS, TOUGHENED GLASS AND GREENHOUSE GLASS ALL DELIVERED TO YOUR DOOR WITH FITTING SERVICES IF REQUIRED.

\*\*\*  
ALL OUR FITTING ENGINEERS HAVE OVER 30 YEARS EXPERIENCE WORKING FOR US.

PLEASE CALL OR EMAIL US FOR A FREE QUOTATION

**01832 734570**

[www.thrapstonglazing.co.uk](http://www.thrapstonglazing.co.uk)  
[windowanddoorrepairs@talktalk.net](mailto:windowanddoorrepairs@talktalk.net)

Free Quotations • No Obligation

Locks • Hinges • Glass Units • Adjustments • Servicing • Letterboxes • Handles • Window Locks • Door Locks

Want to place an **advertisement** or submit an **article**?

If you wish to contribute or have any comments please email [news@nenevalleynews.co.uk](mailto:news@nenevalleynews.co.uk) or call 01522 692542. To advertise, call 01522 692542. Alternatively you can email [advertising@nenevalleynews.co.uk](mailto:advertising@nenevalleynews.co.uk)

If you are not receiving your copy of Nene Valley News, please email [distribution@km-media.co.uk](mailto:distribution@km-media.co.uk) or telephone 01522 692542.

If you would like to receive this publication as a download, Nene Valley News is available online as a pdf at [nenevalleynews.co.uk](http://nenevalleynews.co.uk).

You can also subscribe to Nene Valley News for £1.50 per issue.

Nene Valley News is produced by KM Media & Marketing, County House, 9 Checkpoint Court, Sadler Road, Lincoln LN6 3PW.

Copy dates for Nene Valley News

Publication date: Saturday 1st May  
Articles to the editor by: Wednesday 21st April

Publication date: Saturday 15th May  
Articles to the editor by: Wednesday 5th May

**km**  
KM Media & Marketing  
Your partner in publishing



# Northamptonshire among the first areas in England to roll out Moderna vaccine

Northamptonshire's Covid-19 Vaccination Centre has become one of the first sites in England to begin administering the Moderna vaccine to eligible people – including those aged 45 to 49.

The county has been selected as one of a number of locations across the country to use the new vaccine, which was approved for use in the UK by the Medicines and Healthcare products Regulatory Agency (MHRA) in January.

The first doses of Moderna vaccine in Northamptonshire were administered at 8am on Tuesday 13th April at the Vaccination Centre in Moulton Park.

This coincides with the national vaccination programme opening up bookings to people aged 45 to 49 for the first time.

People aged 50 and over and those with health conditions putting them at higher risk from coronavirus who have not yet received their first dose are also being urged to book their jabs today.

Chris Pallot, Director of the Northamptonshire Covid-19

Vaccination Programme, said: "We are delighted to become one of the first areas of England to start using the Moderna vaccine.

"This is a further indication, if it were needed, of the confidence in the vaccination programme in our county.

"It's fantastic news that the third approved Covid-19 vaccine has arrived in our county to provide another method of protecting our communities from coronavirus – and that means we're now able to open up more appointments at the Vaccination Centre for eligible people, including those aged 45 to 49.

"If you currently qualify for the vaccine and you haven't yet received your first dose then now is the time to book your appointment to give yourself the best possible protection against coronavirus.

"People aged 45 and over and those with health conditions which put them at higher risk from coronavirus can book appointments by calling 119 or by visiting the NHS website."

Appointments can be booked online any time at [www.nhs.uk/](http://www.nhs.uk/)

covidvaccination or by calling 119 free of charge between 7am and 11pm, seven days a week.

Further information about the Moderna vaccine is available at [www.gov.uk/government/publications/regulatory-approval-of-covid-19-vaccine-moderna](http://www.gov.uk/government/publications/regulatory-approval-of-covid-19-vaccine-moderna)

## CASTLE THEATRE TO RECEIVE SUPPORT AS PART OF CULTURE RECOVERY FUND

Castle Theatre in Wellingborough will receive part of a grant of £620,000 from the Government's £1.57 billion Culture Recovery Fund awarded to Parkwood Theatres to help the organisation recover and reopen.

More than £300 million has been awarded to thousands of cultural organisations across the country including Castle Theatre in the latest round of support from the Culture Recovery Fund.

Castle Theatre was opened in 1995 as a community resource organisation on the site of Wellingborough's Old Cattle Market and has a main house theatre with 503 seats. The Covid-19 pandemic has had a particularly profound effect on the arts industries and this funding will provide the financial support required to offset the essential costs as the theatre transitions back to true operating capacity. Importantly it will mean Castle Theatre can retain the remaining highly-skilled arts workforce to open the theatre safely and start the recovery.

Over £800 million in grants and loans has already been awarded to support almost 3,800 cinemas, performance venues, museums, heritage sites and other cultural organisations dealing with the immediate challenges of the coronavirus pandemic.

The second round of awards will help organisations to look ahead to the spring and summer and plan for reopening and recovery. After months of closures and cancellations to contain the virus and save lives, this funding will be a much-needed helping hand for organisations transitioning back to normal in the months ahead.

The funding is from a £400 million pot which was held back last year to ensure the Culture Recovery Fund could continue to help organisations in need as the public health picture changed. The funding has been awarded by Arts Council England, as well as Historic England and National Lottery Heritage Fund and the British Film Institute.

**FULLY FITTED  
ROLLER  
GARAGE  
DOORS**

FROM **£895\*** WAS **£1,354** INC VAT

\* Offer Valid For Openings Up To 2.6m Wide & Inc: 2 Remote Controls, 55mm White Slats, Internal Manual Override

**WHATS INCLUDED:**

- ACOUSTIC & THERMAL INSULATION
- TWO REMOTE CONTROLS
- EXPERT MEASURING & FITTING
- 24 COLOURS AVAILABLE

**Made To Measure...  
ROLLER GARAGE DOORS**

Garolla can save a lot of space inside your garage. Rolls up vertically into a box. Takes only 8 inches of head-room! Opens vertically so you can park up close to the door. Remotely open/close the garage even from inside your car.

**CALL US TODAY**

**Phone:**  
**01832 880 015**

**Mobile:**  
**07537 149 128**

**GAROLLA**  
ROLLER SHUTTER DOORS  
[www.garolla.co.uk](http://www.garolla.co.uk)

CE Approved

**NEW STYLES NOW IN**

**DB FACTORY SHOE STORE**

**HUGE CHOICE OF SHOES AT BEST PRICES**

**10% OFF\***  
WITH THIS ADVERT  
QUOTE: NVX2115F  
VALID UNTIL 15/06/21

**DUNLOP SKECHERS MARCO TOZZI**

**www.dbfactoryshop.co.uk** FREE ROADSIDE PARKING **Opening times** Mon - Sat 10am - 5pm. Sun 10am - 4pm.

**DB Shoes Ltd, 19-21 Irchester Rd, Rushden NN10 9XF**

**EXTRA WIDE FEET?** Visit our specialist shoe fitting centre next door!  
Visit [www.widerfitshoes.co.uk](http://www.widerfitshoes.co.uk) or call **01933 410305** to make an appointment

\*10% discount excludes sale items

**KM**

**KM Media & Marketing**  
NEWSPAPERS | MAGAZINES | WEBSITES

To advertise in Nene Valley News call  
**01522 692542**



# Nene Valley News > MOTORING

## > 2021 HONDA CR-V HYBRID INCREASES STYLE, EFFICIENCY AND COMFORT

Honda UK has revised and updated its 2021MY CR-V Hybrid. Available in dealerships now, the mid-sized SUV is solely available as a hybrid, built around Honda's innovative i-MMD system for unparalleled levels of efficiency and refinement. A number of revisions and styling tweaks, inside and out, refresh and align the CR-V more clearly with Honda's

other e:TECHNOLOGY products.

Priced from £30,180, all models of the 2021 CR-V gain blue-ringed H badges and e:HEV nomenclature to highlight their electrified credentials. Other revisions include a new silver finish applied to key visual elements on the centre console, doors cards and dashboard accents. Other updates include a new 18" alloy wheel design for all grades and privacy glass from SE models upwards. The range topping EX grade CR-V also gains wireless

smartphone charging for improved seamless connectivity.

Mechanically, the CR-V retains Honda's responsive and highly efficient advanced hybrid powertrain technology, which is built around two electric motors, an Atkinson-cycle petrol engine, and an innovative fixed-gear transmission.

On the WLTP combined cycle, this fuel-efficient hybrid system produces CO2 emissions of just 151g/km and fuel economy of 42.2mpg on front-

wheel drive models, and 161g/km and 39.2mpg for all-wheel drive models.

Further under skin revisions include tweaks to the suspension that has been retuned for more linear handling responses and to provide increased low longitudinal rigidity for optimised ride compliance. The dual pinion variable-ratio electric power-assisted rack-and-pinion steering has been refined for improved low-speed manoeuvrability.

Ensuring safety for all occupants, the CR-V's platform design incorporates Honda's exclusive next-generation ACE™ (Advanced Compatibility Engineering) body structure design technology.



The  
**Ashgrove**  
Clinic  
Higham Ferrers  
Call 01933 328020

## BADGER US WITH YOUR NECK PAIN!

Badger the Dog, our clinic mascot, says don't put up with a pain in the neck. We have a number of practitioners who can help with different neck pains.

### Call us now if...

- ✓ You are fed up with the pain.
- ✓ You can't do normal activities.
- ✓ You think it's just your age.

### Get back to normal activities!

So, if you're in pain, having difficulty reversing the car, waiting for rehab exercises, or your family are fed up with you complaining, call us today and take the first step to your recovery.

*We're working together to make you better!*

Physiotherapy | Osteopathy | Podiatry | Acupuncture  
Hypnotherapy | Cranial osteopathy | Counselling  
Gait analysis | Shoulder treatments | CBT  
Sports injury therapy | Injury rehab  
Rhythmic movement therapy

[www.ashgrovehealth.co.uk](http://www.ashgrovehealth.co.uk)  
13 Lancaster Street, Higham Ferrers,  
Rushden, Northamptonshire, NN10 8HY

Book a **FREE 20 minute** consultation if you're not sure whether we can help.



Badger the Dog

Can you find  
Badger the  
Dog's  
biscuit?

Book online with  
our simple system,  
or call us on  
01933 328020.

## Spotlight on > BOUNDR

### > TANDEE NURSERY

Tandee Nursery is a family run nursery and plant centre. Established for over 30 years, they grow and sell direct to the public at trade prices, as well as supplying garden designers, landscapers and developers.

"Everything you see at Tandee Nursery is grown and sold on site. It's the perfect plot for growing top quality plants but we also take pride in providing a customer friendly, garden centre set up, so it's really easy for you to find what you are looking for. All areas are clearly signposted, from fruit trees to perennials, with trolleys provided for your convenience."



## Tandee Nursery

**BUY DIRECT FROM THE GROWER**

**Professional landscaping service available**

**Over 60,000 quality plants in stock**

**Save up to 50% on garden centre prices**



Barnwell Road | Thurning  
Peterborough | PE8 5RH

**Tel: 01832 293 755**  
[www.tandeenursery.co.uk](http://www.tandeenursery.co.uk)

Open 7 days a week:  
9am to 5pm BST, 9am to 4pm BWT,  
Sunday: 9am to 4pm



# Awards success despite the toughest of years

Husband and wife Jim and Suzanne Millar opened the doors of the The Willow and Brook under their ownership in January 2020. The pub/restaurant, located in the beautiful village of Apethorpe, had been closed for three years but barely two months later they were required to close the doors for Lockdown 1.

"As you can imagine, it hasn't been the easiest of first years," said Suzanne, "but we are immensely proud of what we have here."

Chef/patron Jim has more than 25 years of kitchen experience and Suzanne heads front of house offering excellent service and warm hospitality. Their hard work throughout 2020, despite the pandemic, has seen them achieve a host of industry awards since last summer.

"This pride in what we do has seen us become finalists in four food and drink awards – one national, one regional and two county," continued Suzanne.

"We first heard about winning the Good Food Award in the Gastro Pubs category in August, but had to keep it a secret until November! We then heard that we had become finalists in The Great Food Club awards. Jim was awarded Bronze in the final of the Weetabix Northamptonshire Food & Drink Awards for Chef of the Year in January



and last month we were awarded Gold in the Weetabix Northamptonshire Food & Drink Awards for Dining Venue of the Year."

The Willow and Brook are now offering outside dining on Fridays, Saturdays and Sundays with bookings only being taken on the day due to the unpredictability of the weather. Tables will be on a first come first served basis.



[thewillowandbrook.co.uk](http://thewillowandbrook.co.uk)

**wilson browne**  
SOLICITORS

Will   
Not won't

Thinking about your Will might feel upsetting, but our caring and knowledgeable team is ready to help. Now is the right time to plan ahead, for everything and everyone you leave behind.

**We're here to help.**

0800 088 6004

[enquiries@wilsonbrowne.co.uk](mailto:enquiries@wilsonbrowne.co.uk)

[wilsonbrowne.co.uk](http://wilsonbrowne.co.uk)

All the help you need.

**RB Travel**  
01536 791066

## APRIL

Sun 18 Great Yarmouth  
Tue 20 Warwick  
Thu 22 Banbury Market  
Sun 25 Skegness

## MAY

Sat 1 Lincoln  
Mon 3 Sheringham  
Wed 5 Bury St Edmunds Market day  
Sat 8 Hunstanton  
Mon 10 Derbyshire & The Peak District  
Tue 11 Mystery Tour—Full day  
Thu 13 Constable Country  
Fri 14 Stamford Market & Grantham  
Sat 15 Clacton  
Tue 18 Springfields or Spalding  
Wed 19 Wye Valley River Cruise with Lunch  
Thu 20 Downton Abbey Country & river cruise  
Fri 21 Savill Gardens  
Sat 22 Biggin Hill Museum & Heritage Hanger  
Sun 23 Camden Market  
Mon 24 Kentish Lady River Cruise & Lunch  
Sun 30 Brighton  
Mon 31 Bakewell Bank Holiday Market  
Mon 31 London Museums or Free Time  
Mon 31 Tower of London

## JUNE

Tue 1 Melton Mowbray  
Tue 1 Trentham Estate & The Monkey Forest  
Wed 2 Family Seaside Mystery  
Thu 3 Cotswold Farm Park - Adam Hensons  
Thu 3 Fakenham & Sheringham  
Fri 4 Concorde at Aerospace Bristol  
Sat 5 Skegness  
Sun 6 Bekonscot Model Village & Railway  
Wed 9 Haworth & Keighley Worth Valley Railway  
Fri 11 Horse Sanctuary & Norwich  
Sat 12 Hunstanton  
Sun 13 Oxford or Oxford Castle  
Thu 17 Nottingham Cruise & Lunch  
Sat 19 Arundel Castle  
Sat 19 Cromer  
Sun 20 Great Yarmouth

**NEW day trip brochure available**  
Please call us to get your copy

Check out our website for further days out  
**[www.rbtravel.co.uk](http://www.rbtravel.co.uk)**

**TAURUS**  
*Holidays*

**WEAVING HISTORY WITH MYSTERY IN THE SCOTTISH BORDERS**  
Departs 7th June, 5 days, £529 per person

New Lanark is an exceptional example of a purpose-built 18th century mill village, set in a picturesque Scottish landscape near the Falls of Clyde, where in the early years of the 19th century, the Utopian idealist Robert Owen (1771-1858) inspired a model industrial community based on textile production and where he formulated his Utopian vision of a society without crime, poverty, and misery. Includes guided tour of Drumlanrig Castle & Country Estate, and many more attractions.

**BOURNEMOUTH AND BEYOND**  
Departs: 14th June 2021  
5 Days, £419 per person

Known as the 'coast with the most', there are acres of space to enjoy outdoor pursuits or mess about on the water. Walk, run or cycle on sandy beaches, through Victorian gardens or along our majestic clifftops. Panoramic sea views and picture-perfect sunsets. Bournemouth is a prosperous town with a wealth of accommodation facilities, visitor attractions, bars and restaurants. Holiday includes entertainment and Dorset river cruise.

**HISTORIC KENT**  
Departs: 20th June 2021,  
5 Days, £465 per person

Chatham located within the Medway was developed around Chatham Dockyard and several Army barracks, together with 19th-century forts which provided a defensive shield for the dockyard. It was established as a Royal Dockyard by Queen Elizabeth I in 1568. Hundreds of vessels were launched there, including HMS Victory. After World War I many submarines were also built in Chatham Dockyard. Holiday includes Entrance to Chatham Docks, Hever Castle and the Kent & East Sussex Railway.

**NEW holidays for 2021 are now on sale**  
Please call us to get your new brochure  
or register your interest in one  
of our many holidays.

**CALL NOW ON**  
**01933 359313**  
**TO GET OUR FREE BROCHURE!**  
[taurus@rbtravel.co.uk](mailto:taurus@rbtravel.co.uk)  
[www.taurusholidays.co.uk](http://www.taurusholidays.co.uk)

\* Single-room supplement may apply. Full details in our brochure.





**North  
Northamptonshire  
Council**

# Notice of planning APPLICATIONS RECEIVED

## Notice is given that the following applications have been received:

### > IRLTHLINGBOROUGH

**NE/21/00421/FUL (11 May 2021) (CA)** Demolition of existing first floor ancillary retail area and erection of two floors containing 8 residential units with associated car and cycle parking and refuse store. 13-19 High Street Irlthlingborough Applicant: Resham PLC

### > BRIGSTOCK

**NE/21/00453/LBC (11 May 2021) (LB)** Minor internal alterations to first floor bathroom. Fermyn Woods Hall Benefield Road Brigstock Applicant: Mr and Mrs J Broadbent

### > OUNDLE

**NE/21/00418/FUL and NE/21/00419/LBC (11 May 2021) (CA) (LB)** Internal and external alterations to guest house; installation of replacement garage, demolition of existing garage, new gate and addition of a shepherd's hut within the garden. Lorne Cottage and Lorne House 38 Market Place Oundle Applicant: Mr and Mrs Read

### > POLEBROOK

**NE/21/00456/FUL (11 May 2021) (CA)** Construction of two storey garage with two dormer windows at first floor level. Highfield Farm House Main Street Polebrook Applicant: Mr Josh and Mrs Sarah Green

### > WOODNEWTON

**NE/21/00245/LBC and NE/21/00244/FUL (11 May 2021) (LB)(CA)** Single storey mono pitch slate roof rear extension; internal and external alterations; repairs to end gable wall and roof; addition of canopy to the side/rear door and removal

of existing lean-to glazed entrance. 31 Main Street Woodnewton Applicant: J. B. Smith

### > POLEBROOK

**NE/21/00401/FUL (11 May 2021) (CA)** New porch, new front door and door step; relocation of garden gate and stone-wall; replace the garage with a smaller garden storage unit and resize the existing drive; replace patio doors with a new window. Blacksmiths Cottage 1 Hemington Road Polebrook Applicant: Mr and Mrs James Breed

### > FOTHERINGHAY

**NE/21/00446/FUL (11 May 2021) (CA)** Single-storey front extension, single-storey rear extension, minor internal alterations and landscape details. Church Barn Main Street Fotheringhay Applicant: Mr and Mrs Mike Ashton

### > TITCHMARSH

**NE/21/00404/FUL (11 May 2021) (CA)** The change of use from Guest House to Dwelling House. The Horseshoes 2 North Street Titchmarsh Applicant: Mr and Mrs Wells

### > DUDDINGTON WITH FINESHADE

**NE/21/00388/FUL (11 May 2021) (CA)(ART15)** Change of Use of Land to a Camping/ Glamping Site and Ancillary Warden's Accommodation. Land South Of Top Lodge Top Lodge Road Fineshade Applicant: Donna Barney

### > COLLYWESTON

**NE/21/00450/FUL (11 May 2021) (CA)** Proposed detached building conversions and extensions to create two residential properties and one new build unit (Revised proposal to 19/01299/FUL). Wood Farm House 11 High Street Collyweston

Applicant: Rutland County Homes Ltd – Mr Winterton

### > RUSHDEN

**NE/21/00396/FUL (11 May 2021) (ART15)** Division of the existing Waitrose branch in Rushden into a smaller Waitrose store and a new sublet unit for a new tenant. There will also be new rooftop plant, a new E-comm Van Compound and new external seating area with alterations to the existing car park and existing facades to suit. New LED lights will replace existing building mounted and car park lighting. Waitrose 1 Crown Way Rushden Applicant: John Lewis and Partners – Mr Gary Kind

## The reason for applications being advertised is as follows:

**Art 15 – Publicity for planning application under Article 15 of the Town and Country Planning (Development Management Procedure) (England) Order 2015 (as amended);**  
**EIA – Publicity for planning application accompanied by an Environmental Statement under Article 15 of the Town and Country Planning (Development Management Procedure) (England) Order 2015 (as amended);**  
**LB – Publicity for listed building consent/planning application affecting the setting of a listed building under regulation 5/5a of the Listed Buildings and Conservation Area Regulations 1990 (as amended);**  
**CA – Publicity for planning application which may affect the character and appearance of a Conservation Area under regulation 5a of the Listed Buildings and Conservation Area Regulations 1990 (as amended).**  
**GPDO – Publicity for prior notification application in accordance with the Town and Country Planning (General Permitted Development) (England) Order 2015 (as amended).**

Only applications required by legislation to be published in a local paper are listed above. You can view the full weekly list of applications received along with application documents, plans and environmental statements on our website. Copies of environmental statements may be purchased from the Council (whilst stocks last) at a cost of £1.51 plus 15p per page.

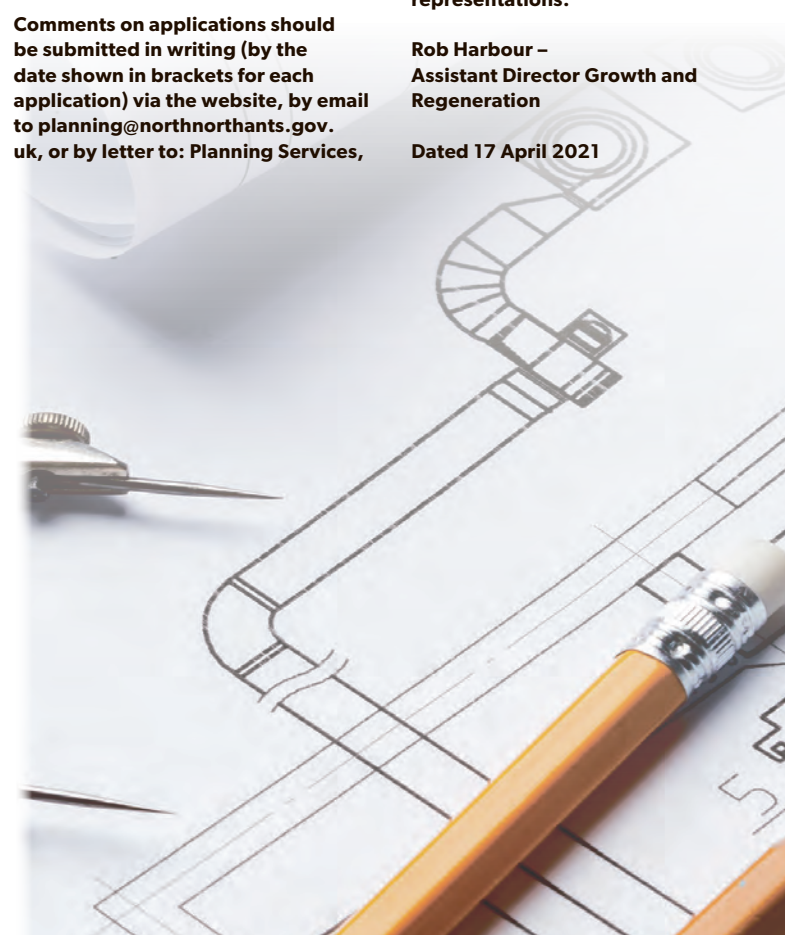
Comments on applications should be submitted in writing (by the date shown in brackets for each application) via the website, by email to [planning@northnorthants.gov.uk](mailto:planning@northnorthants.gov.uk), or by letter to: Planning Services,

Thrapston Offices, Cedar House, Cedar Drive, Thrapston, NN14 4LZ.

Please note: In the case of a householder or minor commercial application, in the event of an appeal proceeding by way of the expedited procedure, any representations made about the application will be passed to the Secretary of State and there will be no opportunity to make further representations.

Rob Harbour – Assistant Director Growth and Regeneration

Dated 17 April 2021



Consultation deadlines will differ for each application. Please go to [www.east-northamptonshire.gov.uk/planningapplications](http://www.east-northamptonshire.gov.uk/planningapplications) for details.

## VOI SUPPORTS COVID-19 VACCINATION PROGRAMME WITH DISCOUNT RIDES TO VACCINATION SITES

Voi Technology, the UK e-scooter operator, has announced that it will be providing users with discounted rides to and from Covid-19 vaccination sites across the UK in the regions where the company operates and locally this includes Northampton.

The initiative aims to support the vaccine rollout and ensure people can easily access vaccines that protect them against the virus.

As of mid-March, more than 25 million people in the UK had received at least one coronavirus vaccine dose. More than 97% of the population lives within 10 miles of a

vaccine service so for cities and towns where Voi is operating, choosing to use an e-scooter to reach the vaccine site can help cut down pollution and traffic.

To claim one of the £8 discounts, users need to have or download the Voi app (available for free from the App Store or Google Play), then click on the bottom left of the Voi app and select 'Free Rides' and click 'Redeem a Voucher' and enter one of the promo codes associated with their region before they start the ride.

Riders will find the promo codes via:

[voiscoters.com/helping-to-vaccinate-the-uk](http://voiscoters.com/helping-to-vaccinate-the-uk).

To be eligible, e-scooter trips must start or end at one of the vaccination sites listed on the NHS website.

There are over 1,500 Covid-19 vaccination sites on the NHS website. The discount will run until the vaccination programme is completed (T&Cs apply).

Voi launched its UK services in selected regions in September 2020, as part of the Department for Transport's e-scooter trial.

It is now operating in 17 UK towns and cities, with more trials soon to be announced.





# Fletton Field campaign refreshed as local elections approach

With North Northamptonshire Council elections in early May, a group which includes representatives of Oundle Town Council, Oundle School and environmental organisation Transition Oundle has reinvigorated the campaign to save Fletton Field from possible sale for development.



The Field is one of Oundle's hidden gems – a precious 0.7 hectares of green space located just off the Glapthorn Road, tucked away behind two residential houses with Abbott House to the north and Oundle School Chapel to the south.

The campaign group firmly believes that this valuable space, which has been recognised as a Local Green Space and registered as an Asset of Community Value, belongs to Oundle.

Historically, Fletton Field is part of land that was sold to the Guardians of the Poor of the Oundle Union by the trustees of the late John William Smith (of John Smith's Brewery) in 1899. Its use has changed with the needs of the town: first for growing food for the poor; then as a hospital garden for the recovery of the sick and more recently as a recreational ground for children.

"Fletton Field was bought by the people of Oundle, for the people of Oundle,"

explained Tony Robinson, Mayor of Oundle. "It is a part of the town's cultural capital and contributes to the promotion and improvement of the social and environmental well-being of our town. It has always been used by the people of Oundle and we must keep this valuable space and manage it for public use."

Surveys of local residents, taken before the pandemic, have shown that people would like the Field to provide the following:

- allotments and/or a community garden
- community orchard/mini forest and wild flower areas
- garden area with seating

and hard pathway to allow for pushchair/wheelchair access

- scout/brownie/multi-use hut
- some open space for small outdoor events and education sessions
- overflow car parking – to be used when larger events are running in the town.

A draft 'vision' for the Field has been drawn up, based on these findings.

"Most of the open space within Oundle's boundaries is privately owned and public access to it is increasingly limited. Compared to other local towns of its size, Oundle has much less publicly accessible green space and

losing Fletton Field would reduce it by a further 40%," said Camilla Sherwin, leader of the campaign.

"The Covid pandemic has reminded us of the value of green space – for exercise and fresh air, for health and well-being, and once it has disappeared, getting it back is nearly impossible. We have created a vision for the Field, based on a public survey, and we want to see it become a reality."

Those running for election to North Northamptonshire Council are being asked to support this opportunity to create an amenity that will benefit local people. Each and every Oundle voter can help to save Fletton Field by voting for the Councillors who support the campaign when they go to the polls on Thursday 6th May.

For further information or updates, contact [fletton.field@gmail.com](mailto:fletton.field@gmail.com)  
[www.flettonfield.org.uk](http://www.flettonfield.org.uk), FB: @SaveFlettonField

## FLETTON FIELD - VISION



## Regent Wrought Iron Ltd

The Regent Street Wrought Iron Works

180-186 Regent Street, Kettering, Northants NN16 8QH

PHONE 01536 485892

High quality gates and fencing hand made on the premises since 1963



Single gates from £60.00  
 Side entry from £99.00  
 Double gates from £120.00

We have 18 styles to choose from. All on show in our showroom. Full fitting & painting service.

### Automatic Estate Gates

- Highest quality equipment
- Up to 14' opening
- Flat draped or bow topped
- Fully installed & painted
- **FREE** first year service
- Guaranteed for 2 years
- Full back up & yearly service
- We have been installing automation since 1998
- Full pressure tested and certified to BS 12453

We can automate your existing gates (if suitable) or upgrade old equipment to meet BS 12453 safety regulations



Has your garden wall/fence had it? Replace it with wrought iron!

**LASTS A LIFETIME • USUALLY FITTED IN A DAY**

**BEAT THE BURGLAR** – Free security locking bolts fitted to all our side entry gates or full range of mortise locks fitted

Visit our website for our online catalogue [www.regentiron.co.uk](http://www.regentiron.co.uk)



# Are you ready to take the Veggie 123 Challenge?

National Vegetarian Week (10th - 16th May) is rapidly approaching, so we've put together a roundup of delicious vegetarian recipes. These recipes will suit everyone from full-time vegetarians to those just looking to go a little more meat-free.

The Vegetarian Society, who have created these recipes, invite you to take their Veggie 123 Challenge and go Veggie for one week, recruit two friends and donate £3 to the Society. Happy cooking.

## > BEETROOT HUMMUS

Serves 4  
Preparation time: 10 minutes

### You'll need:

1 tsp cumin seeds  
300g cooked beetroot, drained  
400g tin chickpeas, drained  
1 garlic clove, peeled and roughly chopped  
1 tsp ground coriander

2 tsp of dill, leaves picked  
2 tbsp extra virgin olive oil  
2 tbsp lemon juice  
Sea salt  
Black pepper

### What to do:

1. Firstly, toast the cumin seeds. Place them in a large frying pan on a medium heat, stirring occasionally until their aromas are released and they start to crackle. Remove from the heat and leave to cool.
2. Place the beetroot, chickpeas, garlic, ground coriander, half the cumin seeds, dill, olive oil and lemon juice into a food processor and blend until

smooth, scraping down the sides as you go.  
3. Add some salt and pepper, whizz again and then check



Beetroot hummus

the seasoning, adding a little more salt, pepper or lemon juice if needed.  
4. Serve the hummus with the rest of the toasted cumin seeds sprinkled on top, with crudité or enjoy it with toast.  
5. The hummus will keep in the fridge for up to 3 days

[www.lovebeetroot.co.uk](http://www.lovebeetroot.co.uk)

## > BRITISH ASPARAGUS, SWEET POTATO AND TOMATO SHAKSHOUKA

This wholesome brunch dish is packed with nutrients and energy thanks to the asparagus and sweet potato. An easy one pot that will keep hungry crowds happy.

Serves: 2  
Preparation time: 10 minutes  
Cooking time: 30 minutes

### You'll need:

2 tsp cumin seeds  
½-1 tsp chilli flakes, to taste  
2 tbsp olive oil  
1 large sweet potato, peeled and cut into 1cm chunks (about 400g total weight)  
2 cloves garlic, chopped  
400g cherry tomatoes, halved  
1 bunch British asparagus, trimmed and chopped into bite size pieces  
2-4 eggs, depending on hunger  
A small handful coriander, chopped  
Salt and freshly ground black pepper

### To serve

A drizzle of extra virgin olive oil  
A dollop of Greek yogurt



British asparagus, sweet potato and tomato shakshouka

### What to do:

1. Add the cumin and chilli to a frying pan and set over a medium-high heat to toast for a couple of minutes. Once the spices are fragrant, pour in the oil and add the sweet potato cubes, stirring well to mix. Reduce the heat to a minimum and cover the pan with a piece of tin foil (or a lid if you have one). Leave to cook for 10 minutes, stirring once or twice, until the sweet potato is just starting to soften.
2. Remove the foil, add the garlic and stir through, then fry for a minute. Turn the heat up a little, add the tomatoes and a little salt and pepper and fry for another 5 minutes, stirring occasionally. Stir through the asparagus, recover loosely with the foil and cook for another 5 minutes.
3. Use a wooden spoon to push the vegetables aside to make 2-4 wells in the asparagus mix, cracking an egg into each. Recover loosely with the foil and leave to cook until the eggs are done to your liking, about 5-8 minutes for a set white and a runny yolk.
4. Season with salt and black pepper, scatter over the coriander, top with a dollop of Greek yogurt and a drizzle of extra virgin olive oil. Serve immediately with plenty of crusty bread.

[www.britishasparagus.com](http://www.britishasparagus.com)

## > CHESTNUT, MUSHROOM & SHALLOT PIE

Serves 4  
Preparation time: 30 minutes  
Cooking time: 55 minutes – 1 hour

### You'll need:

200g cooked chestnuts (such as Merchant Gourmet vacuum packed)  
2 bay leaves  
1 sprig fresh rosemary  
200ml red wine  
300ml vegetable stock  
25g butter  
1 tbsp olive oil  
12 shallots, peeled & left whole  
250g chestnut mushrooms, cut into quarters



Chestnut, mushroom & shallot pie

2 tbsp beurre manié (1 tbsp flour mixed to a paste with 1 tbsp softened butter)  
2 tsp Dijon mustard  
Freshly ground black pepper  
2 tbsp flat leaf parsley, finely chopped  
225g puff pastry

### What to do:

1. Preheat the oven to 200°C/Gas 6.
2. Melt the butter in a frying pan, add the olive oil to stop it burning and fry the onions until slightly browned, about 5 minutes.
3. Add the mushrooms, bay leaves and rosemary and cook for a further 4-5 minutes.
4. Add the chestnuts, red wine and vegetable stock. Bring to the boil and simmer for 20-30 minutes until the onions are soft.
5. Add the beurre manié, stirring constantly until it dissolves, and cook for a further 5 minutes until the sauce is thickened.
6. Stir in the mustard and flat leaf parsley and season to taste with salt and freshly ground black pepper. Spoon the mixture into a pie dish and allow to cool.
7. Roll out the pastry on a floured surface and place on top of filling, crimping the edges to seal the pie. Cut a cross in the top of the pastry to let the steam out during cooking.
8. Bake for about 20 minutes until golden. Serve immediately.

[www.UKShallot.com](http://www.UKShallot.com)



Take the Veggie 123 challenge!  
It's as easy as...

1  
Go veggie  
for one  
week

2  
Nominate  
two people  
to do it too

3  
Donate  
£3 to the  
Vegetarian  
Society

Join in at [nationalvegetarianweek.org](http://nationalvegetarianweek.org)  
#nationalvegetarianweek

Cauldron™

Registered with  
FUNDRAISING  
REGULATOR  
Registered Charity No. 259358  
Registered Company No. 00959115

Vegetarian  
SOCIETY



# Planting kindness, growing community



*Blooming Oundle is a voluntary project that aims to dust off the Covid cobwebs, spruce the place up and give everyone something to enjoy as we move into the summer months.*

The project has been initiated by Oundle Business Association and local environmental organisation, Transition Oundle. It aims to connect more people with what is growing around them, to encourage a 'can do' attitude in the community and to take responsibility for improving the public spaces on their doorstep. Its overarching objectives are to improve the experience and environment for those who visit, live or work in the town.

Based loosely on the achievements of Incredible Edible Todmorden, Blooming Oundle has been kick-started using National Lottery

Community Funding (distributed through the Transition Network) and supported with donations and sponsorship from a number of local companies, including Nene Valley Brewery and The Barn Garden Centre.

Since its launch in January, Blooming Oundle has gathered significant momentum. Volunteers met firstly to assess and agree what needed to be done, and then, grouped by personal interest, they've got stuck in! The project has branched out in several directions, which include:

- Placing more planters/tubs around the town and 'taking over' existing

growing spaces, filling them with flowers, vegetables, fruit plants, herbs and wild flowers.

- Tidying up the town – cleaning the street furniture and litter picking within Oundle and its gateway roads
- Supporting a gardening club at Oundle Library, which is being established for adults who are lonely and socially isolated
- Promoting a Community Seed Swap – a free exchange of growing potential, every seed from which is filled with hope!
- Supporting Oundle Primary School's gardening initiatives, which ties in with the 'food to fork' element of their curriculum
- Updating and rewriting Oundle's Tree Walk – a mapped route around the town that celebrates its arboreal delights
- Reinvigorating Oundle's campaign to Save Fletton Field and keep this precious green space for the town's enjoyment.

Blooming Oundle is also working with Oundle Town Council, and in due course will link with their volunteer Wildflower Wardens.

"The Blooming Oundle project has really ignited a spark in people who want to 'clean up and green up' our beautiful market town" said Paul Eveleigh, Chair of the Oundle Business Association. "We have been delighted by how everyone has got on with the things that needed doing and are so grateful to the volunteers for the many hours they have dedicated to the project. May and June will be busy months for the team – so take a walk around the town and enjoy looking at some of the fruits of their labours."

Every single element of this initiative will make a visible difference to all residents and visitors – whether it's more growing of flowers and plants or a nicer looking local environment. As the saying goes, 'Many hands make light work', so if you'd like to get involved there are plenty of different ways to help. Just offer the time you can spare and choose the things that interest you most! Please email [bloomingoundle@transitionoundle.org.uk](mailto:bloomingoundle@transitionoundle.org.uk) to express your interest.

[www.transitionoundle.org.uk](http://www.transitionoundle.org.uk)  
FB & Insta: @BloomingOundle



Tidying the town



Kids litter-picking



Community spirit



Four musketeers



Laxton House bus shelter



# HELPING OUR BUTTERFLIES HELPS OUR OWN MENTAL HEALTH

*Wildlife charity Butterfly Conservation has launched its Nurture for Nature campaign in a bid to encourage more people to look after themselves by looking after the natural world this spring.*

Spending time in nature is hugely beneficial to our mental health. Just a short amount of time spent in the natural world can alleviate stress and connecting with nature can help us feel happier and more energised. Spending time watching butterflies and moths in flight, for example, can be a wonderful and calming experience. Looking after the natural world will ensure that such benefits continue. This is truly a win-win situation for all of us.

Dr Amir Khan, Butterfly Conservation Ambassador, urged people to join in with the campaign: "As we head into spring again, we must remember how our increased connectedness with nature during the warmer months of

last year really helped us. Like a butterfly that exists as a tiny egg over winter, the promise of spring has been with us during the winter months, and now it's back there's plenty we can do to feel inspired by and part of the wildlife around us."

An increasing number of people have rediscovered nature during the lockdowns. Research undertaken at the University of Cumbria, involving over 700 participants last year, shows that the spring lockdown of 2020 created an increased desire to spend more time outdoors where possible. The number of respondents who reported spending more than one-and-a-half hours per day in nature rose from 27% before lockdown to 45% during the lockdown.

In addition, 67% of

respondents reported actively speaking about nature to friends and family more often during lockdown, while 83% of respondents had specifically taken time to notice butterflies and/or bees. In light of this data Butterfly Conservation is urging people to look after their own corners of the natural world to encourage nature to thrive and so continue to comfort and inspire us.

Nurture for Nature means building a natural world which supports butterflies and moths. This is because, as well as being important pollinators, butterflies and moths also form vital parts of the complex ecosystems which support the birds who sing in our gardens and the mammals who populate our countryside. Their continuing declines are very



worrying for our wildlife as a whole. But there are things that we can do to help boost their numbers.

Dr Kate Dent, Director of Engagement at Butterfly

Conservation said: "As spring finally arrives we can all do our little bit towards helping butterflies, wherever we live, in the knowledge that it's helping our mental health too. Whether

it's caring for herb seedlings in a window box, planting wildflowers in your garden or learning afresh how to breathe and feel the gift of nature in our local green spaces."

**Find out how to look after yourself, your family and nature this spring at [www.butterfly-conservation.org/nurturefornature](http://www.butterfly-conservation.org/nurturefornature) and access your FREE downloadable guide to wellbeing activities and green-fingered ideas.**

## Lockdown lift-off for the London Classic Car Show

- Prime Minister's roadmap plan to end restrictions by 21st June welcomed
- Mid-summer date at Syon Park perfectly timed as protocols terminate
- Capital's premier automotive celebration in pole position to reignite passions and livelihoods
- Advance tickets on sale offering significant savings for those buying now

With the Government planning to lift all Covid-induced protocols in England on 21st June, the timing is perfect for The London Classic Car Show which takes place in the

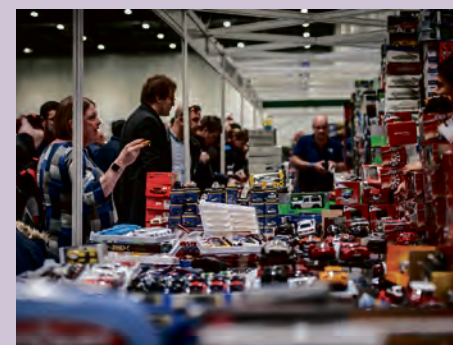
grounds of the capital's picturesque Syon Park (photo above) between 25th-27th June.

Come June, The London Classic Car Show will be celebrating the entire 135 years of automotive innovation under its evocative central theme of 'The Evolution of Design'. This will take visitors on a magical journey through the full spectrum of motoring history, from the earliest horseless carriages right up to the latest supercars. A series of specially curated displays will be enhanced by insightful interviews staged in the show's central

Theatre where experts and enthusiasts will share their passions and experiences on the history of car design.

With confirmation of the lifting of lockdown, visitors can now buy tickets with added confidence. As in 2020, adult admission is available in advance from £25 (£30 on the day) with a limited number of Premium upgrades also on offer.

Providing further reassurance for all ticket buyers, full refunds (excluding booking and transaction fees) will still be offered should the show be cancelled as a result of Covid-19.





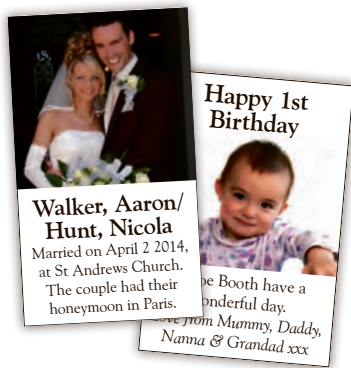
# Nene Valley news

## CLASSIFIEDS

Deadlines for all classifications:  
5pm Monday prior to issue date.  
A complete version of our Terms and Conditions can be found online at [www.nenevalleynews.co.uk](http://www.nenevalleynews.co.uk).  
Pay by credit/debit card or cheque.  
All major credit/debit cards accepted.  
For help and information please call 01522 692542 or visit [www.nenevalleynews.co.uk](http://www.nenevalleynews.co.uk)

## Family NOTICES

Nene Valley News can help you make those important family announcements.



For help and information to place your notice please call 01522 692542 or visit [www.nenevalleynews.co.uk](http://www.nenevalleynews.co.uk)

## ACCOUNTANCY

### Jon Essam & Co Ltd

Chartered Accountants

- Free initial consultation, business advice and quotation
- Tax return, Landlord, Sole Trader, Partnerships and Limited Company clients supported
- Bookkeeping and VAT/MTD submissions
- Payroll bureau, CIS processing and Auto-enrolment services
- All accountancy software brands supported

Email to arrange a free consultation with a chartered accountant: [info@essamca.co.uk](mailto:info@essamca.co.uk)  
Tel: 01832 730280

New website: [www.essamca.co.uk](http://www.essamca.co.uk)  
Follow us for updates:  
[www.facebook.com/jon.essam.accountant](https://www.facebook.com/jon.essam.accountant)

23 Cottingham Way, Thrapston, Kettering, Northants, NN14 4PL

## HOME IMPROVEMENTS

**!!!GET PLASTERED!!!**

For all your plastering needs.  
No job too small, no fuss, no nonsense!  
Reliable and trustworthy service at the best possible price.  
Call Steve for free, friendly advice or a free quote.

30 years' experience  
Qualified tradesman

07703 720138 • 01933 430051

### Kitchen Door Solutions

Replacement doors and kitchen refurbishment  
Doors available in solid wood, painted and laminate finishes



Iain Smith  
Tel: 01933 358436 SPECIALISTS  
Mob: 07583 869741 SINCE 1980

Jon Spencer  
Technical Drawing Services  
Plans drawn for planning and building regulation applications  
01933 316044

Simon Vale  
Painter & Decorator  
High quality • Competitive prices  
Free estimates  
07568 587367 or 01933 228671

## HOME SERVICES

**PGR**  
Plumbing & Heating  
Tel: 01933 698116  
24 Hr Emergency Service  
Email: [pgrplumbing@btinternet.com](mailto:pgrplumbing@btinternet.com)  
Web: [www.pgrplumbing.co.uk](http://www.pgrplumbing.co.uk)  
Specialists in Gas Installations  
Gas Servicing & Maintenance Landlords Gas Safety Certificates  
Central Heating Powerflushing Household Plumbing & Drainage

Domestic and Commercial work  
ELECSA Part P Approved Contractor  
A. Seaton Electrical Ltd.  
m: 07952 249885 t: 01234 708115 e: [seatonsparky@gmail.com](mailto:seatonsparky@gmail.com)

- Rewires
- Garden electrics
- Fault finding
- Testing and inspection
- Landlords reports
- Fuse board / Consumer unit changes
- Extra sockets and lighting
- Smoke alarms

**ENSIGN GAS ENGINEERS**  
We are a FAMILY-RUN LOCAL COMPANY offering installation, service and repair of gas cookers, hobs and pipework  
NO CALL OUT CHARGE  
Tel: 01933 318327

**10% OFF**  
On presentation of this advert.  
Valid until 30/6/21

**DC Heating**  
SAFE IN OUR HANDS  
THE LOCAL PROFESSIONAL HEATING ENGINEERS YOU CAN TRUST  
REPAIRS • SERVICING INSTALLATIONS  
WARM AIR INSTALLATION, SERVICING & REPAIR

Phone today for a free quotation on  
T: 01933 392719 • M: 07909 232107  
[www.dcheatingengineers.co.uk](http://www.dcheatingengineers.co.uk)  
MC Heating Services Ltd Trading as DC Heating

*Plumber — local & fast!*  
**RGJ PLUMBING AND HEATING**  
*Plumbing*  
• Full bathroom installation (inc carpentry & tiling)  
• Burst pipes & leaks  
• Toilet repair/replace  
• Taps, sinks repair/replace  
• Showers repair/replace & pumps

*Heating*  
• Full central heating installation  
• Boiler servicing/breakdowns  
• Landlord safety certificates  
• Power flushing  
• Radiators & valves  
• Pumps & cylinders

No call-out charge!  
City & Guilds Qualified  
All work guaranteed  
rgjplumbing@outlook.com  
01933 588005 or 07921 469471

## PUBLIC NOTICES

### NORTH NORTHAMPTONSHIRE COUNCIL ROAD TRAFFIC REGULATION ACT 1984 – SECTION 14 NORTH NORTHAMPTONSHIRE COUNCIL (PUBLIC BRIDLEWAY ML9 – PARISH OF BULWICK) (TEMPORARY CLOSURE) ORDER 2021

NOTICE IS HEREBY GIVEN that North Northamptonshire Council have made an Order the effect of which is to prohibit pedestrians, equestrians and cyclists along that length of Public Bridleway ML9 in the Parish of Bulwick as specified below. Private access to land or premises adjacent to the said length of bridleway are unaffected.

**RIGHT OF WAY TO WHICH RESTRICTION APPLIES:** The existing route ML9 to be closed begins at National Grid Reference ('NGR') SP9578 9281. The route travels generally east for approximately 1726 metres to point B at NGR SP9745 9267. The route then heads north east for approximately 438 metres to point C at NGR SP 9770 9302. The route is shown by a solid black line between points A – B – C.

**REASONS FOR RESTRICTION:** The restriction is required for health and safety.

**PERIOD OF CLOSURE:** The Order will come into effect on 28th April 2021 and will continue in force for a period of six months. An application may be made for the approval of the Secretary of State for Transport for this Order to be extended if this proves necessary. However, the restriction specified will have effect only at such times and to such extent as is indicated by the display of notices.

**ALTERNATIVE ROUTES:** There is no suitable alternative route. The route remains open to pedestrians between points B – C.

Dated this 17th day of April 2021  
DEBBIE CARTER-HUGHES,  
Executive Director LGSS Law Ltd  
PKG/ROW/001-N

If you require any further information please contact Sarah Cureton on 01604 883400.

### NORTH NORTHAMPTONSHIRE COUNCIL ROAD TRAFFIC REGULATION ACT 1984 – SECTION 14 NORTH NORTHAMPTONSHIRE COUNCIL (CHANCERY LANE, THRAPSTON) (TEMPORARY PROHIBITION OF THROUGH TRAFFIC) ORDER 2021

NOTICE IS HEREBY GIVEN that North Northamptonshire Council have made an Order the effect of which is to prohibit traffic from proceeding along that length of Chancery Lane, Thrapston as set out below.

**LENGTH OF ROAD TO WHICH RESTRICTION APPLIES:** That length of Chancery Lane, Thrapston from High Street for 30 metres northbound.

**REASON FOR RESTRICTION:** The restriction is required for safety during installation of new water connection.

**PERIOD OF CLOSURE:** The proposed Order will come into effect on 28th April 2021 and will continue in force for a period of eighteen months. An application may be made for the approval of the Secretary of State for Transport for the Order to be extended if this proves necessary. However, the restriction specified will have effect only at such times and to such an extent as is indicated by the display of signs prescribed by the Traffic Signs Regulations and General Directions 2016.

**EXPECTED DURATION:** It is expected that the road will be restricted until 30th April 2021.

**ALTERNATIVE ROUTES:** use High Street, Oundle Road and De Vere Road.

Dated this 17th day of April 2021  
DEBBIE CARTER-HUGHES  
Executive Director LGSS Law Ltd  
PKG/T21/127

If you require any further information please contact Gary Thorp ref:- 20/21 – N573 on 01604-651072.

### NORTH NORTHAMPTONSHIRE COUNCIL ROAD TRAFFIC REGULATION ACT 1984 – SECTION 14

### NORTH NORTHAMPTONSHIRE COUNCIL (HARGRAVE ROAD, RAUNDS) (TEMPORARY PROHIBITION OF THROUGH TRAFFIC) ORDER 2021

NOTICE IS HEREBY GIVEN that North Northamptonshire Council have made an Order the effect of which is to prohibit traffic from proceeding along that length of Hargrave Road, Raunds as set out below.

**LENGTH OF ROAD TO WHICH RESTRICTION APPLIES:** That length of Hargrave Road, Raunds from Station Road to Church Road.

**REASON FOR RESTRICTION:** The restriction is required for safety during overhead works.

**PERIOD OF CLOSURE:** The proposed Order will come into effect on 17th April 2021 and will continue in force for a period of eighteen months. An application may be made for the approval of the Secretary of State for Transport for the Order to be extended if this proves necessary. However, the restriction specified will have effect only at such times and to such an extent as is indicated by the display of signs prescribed by the Traffic Signs Regulations and General Directions 2016.

**EXPECTED DURATION:** It is expected that the road will be restricted for one day.

**ALTERNATIVE ROUTES:** use Church Road, Church Street, Chelveston Road, Wellington Street, Grove Street, Brook Street and Midland Road.

Dated this 17th day of April 2021  
DEBBIE CARTER-HUGHES  
Executive Director LGSS Law Ltd  
PKG/T21/104

If you require any further information please contact Gary Thorp ref:- 20/21 – N557 on 01604-651072.

### NORTH NORTHAMPTONSHIRE COUNCIL ROAD TRAFFIC REGULATION ACT 1984 – SECTION 14 NORTH NORTHAMPTONSHIRE COUNCIL (BACK LANE, LITTLE ADDINGTON) (TEMPORARY PROHIBITION OF THROUGH TRAFFIC) ORDER 2021

NOTICE IS HEREBY GIVEN that North Northamptonshire Council have made an Order the effect of which is to prohibit traffic from proceeding along that length of Back Lane, Little Addington as set out below.

**LENGTH OF ROAD TO WHICH RESTRICTION APPLIES:** That length of Back Lane, Little Addington from High Street to Bakehouse Hill.

**REASON FOR RESTRICTION:** The restriction is required for safety during repairs to leaking fire hydrant.

**PERIOD OF CLOSURE:** The proposed Order will come into effect on 26th April 2021 and will continue in force for a period of eighteen months. An application may be made for the approval of the Secretary of State for Transport for the Order to be extended if this proves necessary. However, the restriction specified will have effect only at such times and to such an extent as is indicated by the display of signs prescribed by the Traffic Signs Regulations and General Directions 2016.

**EXPECTED DURATION:** It is expected that the road will be restricted until 28th April 2021.

**ALTERNATIVE ROUTES:** use High Street and The Green.

Dated this 17th day of April 2021  
DEBBIE CARTER-HUGHES  
Executive Director LGSS Law Ltd  
PKG/T21/123

If you require any further information please contact Gary Thorp ref:- 20/21 – N570 on 01604-651072.



### TOWN AND COUNTRY PLANNING ACT 1990, AND TOWN AND COUNTRY PLANNING (ENVIRONMENTAL IMPACT ASSESSMENT) REGULATIONS 2017

THIS IS TO LET YOU KNOW THAT PLANNING PERMISSION APPLICATION REFERENCE 19/01781/FUL HAS BEEN DECIDED.

Description and location of 'Hybrid' application over 2 sites.

**Site 1.** Federal Estates land, off Newton Road, Higham Ferrers NN10 8HW: demolition of industrial buildings and redevelopment to create 120 dwellings with highway works, battery storage area, landscaping, acoustic fencing and bunding (Full planning permission).

**Site 2.** Phased development of land at the Chelveston Renewable Energy Park, NN9 6AU with: (2a) 10,000m2 of replacement employment space - six buildings in B2/B8 Use Class - and a 4,900m2 building for vertical farming in horticultural/agricultural use with highway works, and landscaping (Full planning permission); and

(2b) Development of up to 18,000m2 of employment space - B1/B2/B8 Use Classes - with a maximum of 2,000m2 of B1 Use and provision of a primary substation (Outline planning permission all matters reserved except Access).

The application was supported by an Environmental Impact Assessment. A copy of the decision notice is available on [www.northnorthants.gov.uk](http://www.northnorthants.gov.uk), via Planning and Building Control (scroll down to view and comment on an application). Please enter the Case Reference No. 19/01781/FUL

We would like to thank those of you who wrote to us; all comments were reported to Councillors. As the case has now been decided, we are letting you know the outcome but not inviting comments. If you have any queries or require assistance, please contact the Case Officer gordon.smith@northnorthants.gov.uk

Rob Harbour, Assistant Director - Growth & Regeneration Planning Services, Thrapston Offices, Cedar House, Cedar Drive, Thrapston, Northamptonshire, NN14 4LZ.



# DELIVERING A BETTER FUTURE FOR YOUNG PEOPLE THROUGH SPORT

As grassroots sport once again begins its phased return across the UK, it is now essential we use the power of sport to build back better for our young people, who have been blighted by this pandemic.

Sport is a vital tool to help young people develop and overcome social issues such as mental health, fight crime and anti-social behaviour, increase employment skills and pathways and to bring communities together.

As the UK begins to plan for a post-pandemic future, sport and community clubs need to play a vital role in the recovery.

It is estimated that sport returns £4 for every £1 spent on reductions in spending on crime, truancy and ill health. Young people who are physically active thanks to their local sports clubs and organisations can show up to seven times better levels of teamwork, six times better levels of resilience and five times better communication skills.

Research also conducted by Newton for Made By Sport revealed that before the pandemic, over 40% of local community sports clubs were either in deficit or just breaking even. The pandemic has put over 25% of community clubs at risk of permanent closure.

With sport returning, now is the time to invest in grassroots sports and give our young people the best opportunity to thrive. That's why community foundations have been working



**#ClubsInCrisis Fund opens on 12 April**

**made by sport**

Visit [madebysport.com/clubsincrisis](http://madebysport.com/clubsincrisis) for more information



**#ClubsInCrisis Fund opens on 12 April**

**made by sport**

Visit [madebysport.com/clubsincrisis](http://madebysport.com/clubsincrisis) for more information

hard behind the scenes with Made By Sport to create something which will leave a long-lasting, positive legacy for the future of our young people.

The Made By Sport #ClubsInCrisis fund, supported by the Cash4Clubs scheme, is now open to funding applications from community sports clubs and organisations across the UK.

Unrestricted grants of up to £2,021 will be

made available for those groups who do so much to use sport as a vehicle for social good for young people in the local area and allow them to develop a range of life skills and knowledge that bring a benefit to not only the individual but also to their local community.

This money is needed now and that's why Northamptonshire Community Foundation are thrilled to support this fund alongside Made By Sport, the leading organisation that raises awareness of the power of sport and raises funds for sports clubs and organisations.

**Find out more about the #ClubsInCrisis fund and how your club can secure a grant at:**  
<http://www.ncf.uk.com/grants/grant-finder/made-by-sport--clubsincrisis-fund>



**RESIDENTIAL & COMMERCIAL WASTE COLLECTION**

## SINGLE BULKY ITEMS OR FULL HOUSE CLEARANCES

If you have any cardboard, paper, furniture, electrical waste, pallets, garden waste etc please give us a call for a very competitive price!

We can normally clear the waste in 72 hours from the point of order, but we also provide an emergency service, so please give us a call should you have a requirement!

- Fully Licensed
- Diverted from Landfill
- WEEE Waste
- Reliable & Friendly Staff
- Single Bulky Items
- Full house clearances
- Residential & Commercial Services

## OUR SERVICES:

- Declutter Service
- Property Clearance
- Garden Clearance
- Loft Clearance
- Office Clearance
- Sharps Removal
- Window Cleaning
- Extreme Cleaning
- Biohazard Cleaning
- End of Tenancy Cleaning
- Decontamination Cleaning
- COVID-19 Fogging
- Carpet Cleaning
- Void Property Cleaning
- Wheelie Bin Cleaning
- Hazardous Waste Removal
- WEEE Electrical Waste
- Graffiti Removal
- Skip & Grab Hire
- Confidential Shredding
- Jet Washing Service
- Touch Point Cleaning



**BIN CLEANING from £3.50**

**Call us today!**

**01933 315872**

Brindley Close, Rushden,  
Northamptonshire NN10 6EN

For more information visit:  
[www.intercountyltd.co.uk](http://www.intercountyltd.co.uk)