

Nene Valley

news

YOUR LOCAL INDEPENDENT COMMUNITY
NEWSPAPER FOR EAST NORTHAMPTONSHIRE

Telephone:
01522 692542

We want to hear from you,
so please submit your
news story or event at
www.nenevalleynews.co.uk

INSIDE
this issue

YOUR HEALTH –
SACRED JOINTS

PAGE 04

STUDENT AWARDED
FIRST PRIZE IN NATIONAL
STONE CARVING
COMPETITION

PAGE 08

NEWS IN BRIEF

Drop-in vaccine clinics open to 16- and 17-year-olds

Nearly every drop-in Covid-19 vaccination clinic in Northamptonshire is now open for people aged 16 and 17 to get their first jab and protect themselves against coronavirus.

Drop-in sessions for 16- and 17-year-olds are being held at several locations across the county over the coming days – including in Corby, Kettering, Northampton, Wellingborough and south Northamptonshire – for those who don't already have an appointment booked via their GP.

Alongside these drop-in sessions, a number of GP practices around Northamptonshire are contacting their patients in the 16 and 17 age group with details of how they can book a vaccine appointment.

Meanwhile, 17-year-olds who are within three months of their 18th birthday can opt to book their appointments online at nhs.uk/coronavirus-vaccine or by calling 119.

A Higham doctor remembered

The continuing Covid-19 pandemic has produced many expressions of appreciation for NHS workers. In Higham Ferrers church members and friends have also remembered a local doctor who died while working to save patients during a cholera epidemic 150 years ago.



Cholera was rife in this part of Northamptonshire in the early 1870s and Dr Richard Hacon, an assistant surgeon, put his own life at risk by treating his patients before succumbing to the disease himself. He was 29 years old when he died on 14th August 1871.

The townsfolk of Higham wanted to mark his sacrificial duty and 1,157 ordinary men and women subscribed to a fund to erect a granite obelisk in the churchyard.

The citation reads: 'This memorial was erected by the voluntary contributions of 1157 subscribers, chiefly of the working classes, in grateful acknowledgement of the careful skill and unremitting zeal in the discharge of the laborious duties of his calling and of his unwearingly self-denial on their behalf.'



duties of his calling and of his unwearingly self-denial on their behalf.'

A generous donation from the Duchy of Lancaster's Benevolent Fund has enabled a facelift for the memorial and surrounding railings. A small group of volunteers – The Holy Handymen! – have spent several months cleaning and repainting the monument.

On Sunday 15th August the church congregation joined Vicar, The Reverend Michelle

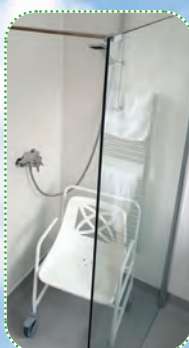


Dalliston, at the memorial for an act of remembrance and rededication.

Rev Dalliston said: "The 150th anniversary of Dr Hacon's death coincided with our Patronal Festival on the Feast of St Mary the Virgin.

"The rededication offered a timely reminder of the unstinting and selfless work of so many in caring for our health and wellbeing, not least during this long Covid pandemic."

SHOWROOMS: 69-71 WASHBROOK RD • RUSHDEN • NORTHANTS NN10 6UR [action2mobility.co.uk](https://www.action2mobility.co.uk)



Wet rooms
and easy access
bathrooms
supplied
and fitted

Action²Mobility
THE REGION'S LEADING MOBILITY AID CENTRE

Phone us for
delivery if you're
shielding*

Simply make your choice and
phone through your order to
0800 698 2588

*Limited to 25 miles radius from our
showrooms in Rushden

CALL FREE: 0800 698 2588 MON-FRI 8am-4.30pm FREE PARKING

Stockist of Cosyfeet and Sandpiper shoes

STAIRLIFTS: FULLY GUARANTEED, FREE HOME SURVEY

WILDLIFE NEWS

WORDS BY
ROY BURRELL

One of the commonest 'weeds' (remembering that a weed is basically a plant which finds itself in the wrong place) at this time of year is the rosebay willowherb, possibly smothering other plants with its reddish flowers, followed by the masses of feathery seeds (which is why it spreads so quickly). But this is also when other country dwellers will in effect be organising their "coming of age" as they finish their life cycle – which for insects, especially our moths and butterflies, can be simplified to "seed, hatch, eat, change, make seed" or something very similar.

At least one of those stages (the eating bit!) is where the caterpillars are important, because that is where damage, to crops and garden plants, is caused as the growing caterpillar satisfies its hunger. A recent visitor to our garden was an elephant hawkmoth. Recent night-camera clips had shown that night time activity outside included large moths but here was identification; hawkmoths generally are large, and recognition points include a peculiar 'horn' at the tail end.

This family has a Latin name, Sphingidae. The caterpillar may be seen rearing up into a threatening position, but many of this insect family have other markings intended to protect them from being eaten themselves. This is not one of the "clothes moth" types; these caterpillars are out for suitable food, and luckily for us all this comes from willowherb plants growing so rapidly. Many of the fields along the valley are the worked-out soils left after mining, which do not always make for good growing soils but the strong growth of the willowherb gives it an advantage over many other species.

If you should wish to pick up one of these caterpillars – not recommended, though it would not harm you – you might be surprised by both the weight of the creature and its strength; if you should be fortunate enough to come across one of these animals, it's a friendly fellow, and although it will add other items to its menu it means that some control is being given over a weedy invader – for which all gardeners should be grateful.

COUNCIL LEADER OFFERS CONGRATULATIONS TO WORLD-BEATING PARALYMPIAN

Leader of North Northamptonshire Council, Cllr Jason Smithers, has offered his congratulations to world-beating Paralympic swimmer Maisie Summers-Newton.

Nineteen-year-old Maisie from Wollaston in North Northants took Gold in the SM6 women's 200m individual medley at the Tokyo Aquatics Centre yesterday.

She finished strongly in a World Record time of 2m 56.68 seconds – 0.22sec inside the previous mark. Her hero, Ellie Simmonds,

finished fifth.

Cllr Smithers said: "This is a world-beating performance in every sense and I'm delighted for Maisie and all she has achieved."

"The dedication which is needed to make it to the Paralympics is extraordinary in itself but to win a Gold – and in world record time – is truly remarkable."

"Performances such as this are not only important for those involved but they act as an inspiration for others."

"For some this might be about achieving excellence while for others it might be about finding something they love to do and that brings a positive impact to their lives."

GENEALOGY JOTTINGS

WORDS BY
JAN PEARSON

It is so tempting to think that the answers to all genealogy questions can be found on the internet, but not so. Use whichever resources that you can find to add flavour to those lives of the past.

Okay, so using the internet can be helpful as a starting point; if you pop the name of a town or village where your family once lived into the search box along with the word 'history' many websites can appear. The ones that relate to local family history societies are particularly useful as they often have books for sale or recommend books and other resources that you can use.

This is what I did for the book 'Reuben's Corner' that I mentioned last time. This particular branch of my family came from a small village called Bartlow Hamlet in Essex. It straddles the county border with Cambridgeshire, which does make choosing which archives in which to search rather interesting! A mile down the road is Ashdon, another family stronghold, and using the same technique, I found not only the

book 'The Annals of Ashdon' that took me back through time in the village, but also 'Five Miles from Bunkum'. "Bunkum" was Ashdon's name for Saffron Walden and the book paints a fantastic picture of life at the beginning of the 20th century. In turn, these books led me on to 'The Empty Fields', a book about the Agricultural Labourers' Strike of 1914 in which one of my great grandfathers was involved.

As my family came from different parts of the bottom right-hand corner of England (apart from my Irish grandfather) I have books from each of the towns and counties. Books of photographs, of which some date from the mid 1800s, are particularly interesting, although it can be heartbreaking looking at some of the living conditions that there were. However, some also show fields and woods lost forever where houses now exist.

Genealogy Specialists, Tracing Our Past, Discovering Our Genes (TOP DOG)
www.genealogy-specialists.com



NICHOLSON ARBORICULTURAL SERVICES

All aspects of tree work undertaken

- FREE QUOTES
- No job too small
- Rushden
- Northants

JAMES NICHOLSON
TEL: 01933 358079
MOB: 07495 944880



JAMESNICHOLSON75@YAHOO.CO.UK

Want to place an advertisement or submit an article?

If you wish to contribute or have any comments please email news@nenevalleynews.co.uk or call 01522 692542. To advertise, call 01522 692542. Alternatively you can email advertising@nenevalleynews.co.uk

If you are not receiving your copy of Nene Valley News, please email distribution@km-media.co.uk or telephone 01522 692542.

If you would like to receive this publication as a download, Nene Valley News is available online as a pdf at nenevalleynews.co.uk.

You can also subscribe to Nene Valley News for £1.50 per issue.

Nene Valley News is produced by KM Media & Marketing, County House, 9 Checkpoint Court, Sadler Road, Lincoln LN6 3PW.

Copy dates for Nene Valley News

Publication date: Saturday 18th September
Articles to the editor by: Wednesday 8th September

Publication date: Saturday 2nd October
Articles to the editor by: Wednesday 22nd September

KM
KM Media & Marketing
Your partner in publishing

Do your feet need some special care?

Call Dyna today on 07940 401691



Are you suffering from pain or discomfort with your feet, toenails or both? If yes, then give me a call to see if I can help. I take the health of your feet seriously and I offer a wide range of professional foot care treatments to keep your feet healthy.

PerfectFeet
Mobile Foot Health Practitioner

I offer a friendly, discreet and professional service in the comfort of your own home. Home visits based on COVID-19 compliance. Please contact me for advice on your foot health or to book an appointment.

Quality Repairs To Windows & Doors

THRAPSTON GLAZING
Est 85 **WINDOW & DOOR REPAIRS**

FREE QUOTES **FREE GENUINE ADVICE**

QUALITY REPAIRS TO ALL MAKES OF WINDOWS, DOORS AND CONSERVATORIES SUPPLIED AND FITTED BY ANY COMPANY.

REPLACEMENT GLASS UNITS, NEW LOCKS, NEW HINGES, NEW LETTERBOXES, NEW HANDLES ETC... WITH COMPLETE FITTING SERVICE

WE ALSO SERVICE WINDOWS, DOORS AND PATIO DOORS ADJUSTING AND LUBRICATING AS WE GO, BADLY ADJUSTED DOORS ARE THE MAIN REASON FOR LOCK FAILURE.

WE STOCK AND SOURCE THOUSANDS OF SPARE PARTS TO SUIT ALL MAKES OF WINDOWS AND DOORS

OTHER SERVICES INCLUDE, CUT GLASS, TOUGHENED GLASS AND GREENHOUSE GLASS ALL DELIVERED TO YOUR DOOR WITH FITTING SERVICES IF REQUIRED.

ALL OUR FITTING ENGINEERS HAVE OVER 30 YEARS EXPERIENCE WORKING FOR US.

PLEASE CALL OR EMAIL US FOR A FREE QUOTATION

01832 734570

www.thrapstonglazing.co.uk
windowanddoorrepairs@talktalk.net

Free Quotations • No Obligation

Locks • Hinges • Glass Units • Adjustments • Servicing • Letterboxes • Handles • Window Locks • Door Locks

EXECUTIVE PLEDGES CONTINUED SUPPORT FOR BUS OPERATORS IN NORTH NORTHANTS

North Northamptonshire Council's Executive has pledged to continue support to bus operators in the area as the social and economic recovery from the Covid-19 pandemic continues.

At a meeting this afternoon, it was agreed that payments made to bus operators for the concessionary fares scheme would continue to be made at the same level as before the pandemic – up until March 2022.

The sector has been hit hard by the Covid-19 pandemic and whilst fare paying passengers have now returned to around 85 per cent of pre-Covid levels, travel by concessionary pass holders has not recovered as well, being only around half of when coronavirus first emerged.

This means that many services are still not generating enough revenue to be commercially viable.

Cllr Graham Lawman, the council's Executive Member for Highways, Travel and Assets, said: "An effective bus network

is essential in North Northants for both social and economic reasons and I'm delighted that we have been able to and can continue to support operators at what has been an extraordinarily difficult time for them.

"These payments will provide some much needed certainty as we continue to recover from Covid and with funding being continued until the end of this financial year, will allow us to link with the important work we will be doing on our bus strategy."

Cllr Jason Smithers, Leader of the Council, said: "This is an example of the public and private sectors working well together to deliver the best services for the people of North Northants."

"Building such resilience allows us to keep communities connected and help the economy recover."

Under the concessionary fares scheme, the council is responsible for reimbursing operators for concessionary bus travel by eligible older or disabled people.

Reimbursement is for journeys starting in the authority's area and is at a proportion of the normal fare to adjust for trips generated by free travel, so that the operator is no better or worse off.

As the majority of bus services operate commercially, the loss of patronage with the onset of Covid and Government discouragement to travel from March 2020 would have made services unviable had not Government stepped in with funding in order to maintain reasonable service levels.

Government also asked local authorities to continue to reimburse concessionary fares at pre-pandemic levels and recently extended that request to March 2022.

The decision on the matter was included in the Executive paper on Budget Forecast 2021/22.

National Bus Strategy

Alongside these developments the Government has announced plans in the National Bus

Strategy to considerably enhance bus services and increase bus patronage.

The council has committed to publishing a Bus Service Improvement Plan by October

2021 and forming an Enhanced Partnership with bus operators by April 2022.

Strategy for tackling litter and fly-tipping agreed at Executive Committee

Members of North Northants Council's Executive Committee recently agreed to adopt a strategy which aims to tackle the issue of littering and fly-tipping throughout the north of the county.

Members agreed that litter and fly-tipping has a detrimental impact on the community and the council is committed to improving the local environment, making North Northamptonshire a pleasant place to live, work and visit.

The strategy has been developed to ensure there is a comprehensive approach to tackling litter and fly-tipping and uses a number of intervention actions to tackle the issue, including providing support to local groups who undertake regular litter picks throughout the county and educating the public of the detrimental effects of litter.

Executive Member for Highways, Travel and Assets, Cllr Graham Lawman, said: "This was a welcome item to yesterday's Executive meeting and I was pleased to support and agree the adoption of this strategy. Littering and fly-tipping is a blight on the community and we are fully committed to creating a safer and cleaner place for all of our residents. We intend to build on the prevention and deterrent schemes already in place and, in particular, work with the various Womble groups, whose efforts to clear up their areas are greatly appreciated."

Leader of North Northants Council, Cllr Jason Smithers, said: "This is a great strategy for North Northants Council to adopt and further shows our commitment to tackling this issue. Thank you to those local groups who already support us by carrying out regular litter picks."

To see the full report taken to the Executive Committee, please visit <http://ow.ly/r6Fh50FYLdd> where a link to the pdf document can be found.

Bosworth's Garden Centre



Plant Centre

Our Plant Centre is bursting with plants to enhance your outside space. Our knowledgeable team is on hand to help you choose the perfect plant.

Mulberry Café

Mulberry Café

Offering an exciting menu in a relaxed setting overlooking our Plant Centre. Breakfasts, Light Snacks, Main Meals, Cakes and Afternoon Teas

Elton, Peterborough, PE8 6SH

Tel: 01832 343104

www.bosworthsgc.co.uk

BOSWORTH'S
Garden Centre

RB Travel
01536 791066

SEPTEMBER

Wed 1 Kensington Palace & Knightsbridge
Sun 5 Skegness
Tue 7 Springfield or Spalding
Thu 9 Kew Palace & Gardens
Sat 11 Ludlow or Ludlow Food Festival
Mon 13 James Herriot Museum
Wed 15 Sheringham & the NNRW
Thu 16 Nottingham Cruise & Lunch
Fri 17 Southwold
Sat 18 Scarborough
Tue 21 Moreton & Bourton
Thu 23 Manchester Open Top Bus
Thu 23 Manchester
Fri 24 Stratford
Fri 24 Stratford Gin & Cruise
Sat 25 Bakewell Farmers Market
Sun 26 Malvern Autumn Show
Tue 28 Royal Airforce Museum - Hendon
Wed 29 Derbyshire Lunch, Cruise & Ashbourne
Thu 30 Cotswold Tour - New route

OCTOBER

Sat 2 Bletchley Park Code Breakers
Sat 2 Milton Keynes shopping
Wed 6 Shrewsbury Cruise & British Iron Works
Sat 9 Knitting & Stitching Show
Sun 10 Skegness
Tue 12 Cambridge
Sat 16 Blackpool Illuminations
Sat 16 Westonbirt Colours of Autumn
Tue 26 Dinosaur Adventure Park
Thu 28 Black Country Museum or Dudley Zoo
Fri 29 London Museums or Free Time
Fri 29 London Transport Museum

NOVEMBER

Sat 6 Silverstone Experience
Sun 14 Nottingham Christmas Market
Wed 17 Pretty Woman the musical
Fri 19 Chatsworth at Christmas
Sat 20 Birmingham Christmas Market
Sat 20 Harrogate Christmas Market
Sun 21 Festive Gift Fair
Sun 21 Blenheim Palace Christmas Market

Check out our website for further days out
www.rbtravel.co.uk

TAURUS
Holidays

CHESHIRE & THE WIRRAL PENINSULA
Departs: 17th October 2021, 5 Days,
£449 per person

With its bewitching beauty and unique atmosphere Chester is one of Britain's most popular places for an unforgettable short break. Each chapter of Chester's history is etched into the very fabric of the city. Well, you are walking where Roman Legionnaires marched to war, Viking raiders wreaked havoc and Norman invaders conquered Anglo Saxons. Chester has the most complete city walls, the oldest racecourse, largest Roman Amphitheatre in Britain, a 1000 year old Cathedral and the 700 year old Rows galleries where shopping is a double delight. You'll find stores galore offering the hottest fashion in Chester all set against a background of unique treasures of antiquity and a vibrant cafe culture where outdoor dining and people watching go hand in hand. This holiday includes a river cruise.

NOVEMBER

26th-29th - GERMAN CHRISTMAS MARKET
Hotel Weiland, 3 nights bed & breakfast,
inc excursions £299pp.

29th-3rd Dec - A TASTE OF CHRISTMAS
Clifton Park Hotel, St Annes on Sea,
4 nights full board, inc excursions £459pp.

DECEMBER

22nd-3rd Jan - CHRISTMAS &
NEW YEAR IN SPAIN

Hotel Volga, 13 days with included excursions,
half board £1019pp

23rd-27th - CHRISTMAS IN WARWICKSHIRE
Walton Hall Hotel & Spa, 4 nights half board,
inc excursions £579pp

30th-2nd Jan - NEW YEAR IN BOURNEMOUTH
Trouville Hotel, 3 nights half board. Inc excursions £449pp

* Single-room supplement may apply. Full details in our brochure.

2022 holidays are now available to book
please call us for a full list of our trips.

CALL NOW ON
01933 359313
TO GET OUR FREE BROCHURE!
taurus@rbtravel.co.uk
www.taurusholidays.co.uk

WELLINGBOROUGH HEALTH AND WELLBEING FESTIVAL 2021: BRINGING WELLNESS BACK TO THE BOROUGH

This September will see the launch of the first ever Wellingborough Health and Wellbeing Festival, a week-long celebration of health and wellbeing, from 6th-12th September.

North Northamptonshire Council has organised the festival in conjunction with local wellness experts, sports clubs, partners and organisations. The aim is to encourage residents to take care of their own health and wellbeing, gain inspiration, and seek advice to improve their lifestyles. All sessions are free-of-charge.

This feel-good festival has been designed to cater for a wide range of age groups and abilities, with a firm focus on both physical health and mental wellbeing.

The weekday programme will feature low-impact exercise sessions: guided walks and running for beginners, and high energy exercise sessions: under 18s basketball, adults' rugby training and high-impact gym workouts. These will run alongside therapeutic pursuits such as mindfulness, arts and crafts and creative writing.

Saturday 11th September kicks off with the Irchester Country Park Run at 9am. A pop-up wellness centre in Swansgate Shopping Centre

will be the main attraction from 12 noon until 3pm. Residents are invited to have a walk-in health MOT by qualified professionals, to watch the healthy food preparation demonstrations, and to make their own fruit smoothie on the 'smoothie bike'.

For budding firefighters, a fire engine will be stationed outside the shopping centre. In the afternoon, Redwell Leisure Centre will be offering 30-minute racquet sport taster sessions, including badminton, table tennis, short tennis and squash.

On Sunday 12th September, the festival will culminate in full day of team sporting activities. In the morning there will be a children's rugby training session (for 7 to 16 year-olds) at Wellingborough Rugby Club and a recreational walking basketball session (for people of all ages) at Redwell Leisure Centre. In the afternoon, the pool at Waendel Leisure Centre will be available for a leisurely swim.

Councillor Helen Harrison, Executive

Member for Adults, Health and Wellbeing said: "As a Chartered Physiotherapist and health care professional, I deeply understand how important it is for us all to take the time to take care of our health and wellbeing. This is especially important after a challenging 18-month period which has affected us all in different ways.

"The Wellingborough Health and Wellbeing Festival offers a balanced timetable of talks, activities and taster sessions to help improve physical health and mental wellbeing.

"The festival provides a great opportunity for residents to connect with Wellingborough's expert health and wellbeing community."

Councillor Jason Smithers, Leader of North Northamptonshire Council said: "Following the hugely successful Health and Wellbeing

Festivals in Kettering and Corby this summer, we are delighted to be able to deliver the event in Wellingborough in September.

"As the name suggests, Wellingborough was a 17th-century spa town with holy wells and healing springs.

"We are looking forward to bringing wellness back into the borough; to encourage residents to take care of their own health and wellbeing, to seek advice and draw inspiration from the sessions. Best of all it's free and easy to join in with.

"I am extremely thankful to all the organisations involved for joining forces with us to make this event possible, as we adapt to the new normal after lockdown.

"Preparations are underway for a similar style event in East Northants this October."

For further details visit <https://www.northnorthants.gov.uk/health-leisure-and-parks/wellingborough-health-and-wellbeing-festival-2021-timetable>

YOUR HEALTH – SACRED JOINTS

**WORDS BY
CLAIRE SHORT**

Well, they're not really sacred, they're sacro-iliac, but what's a typo between friends?

The sacro-iliac joints are where your spine joins your pelvis. If you've got sacro-iliac pain you'll normally describe it as lower back pain to one side. And you'll always point to the bumpy bit at the bottom of your back to the left or right.

The sacro-iliac joints are rather big joints and the complicating thing about them is that they are a very unusual shape and that they don't move much. In fact, a lot of people will tell you that they are fused and don't move at all. But they can still cause terrible, and frightening, pain.

I'm not going to get into the debate about whether these joints move or not. I run dissection courses for practitioners and have seen enough cadavers to have my



own opinion. The important thing is that we know pain can be localised to this area.

Some of the things we recommend to help sacro-iliac pain are:

- 1 Knee hugs when lying on your bed (a rocking movement, not stretches)
 - 2 Gluteal stretches – pulling one leg to the opposite shoulder
 - 3 Keeping moving
- Three things we don't

recommend if you've got sacro-iliac pain are:

- 1 Changing bed linen
- 2 Hoovering
- 3 Mowing the lawn

Please do be careful if you've got low back pain that is only on one side. It's very easy to aggravate it and end up with a few weeks of serious pain. Please do get it checked if it's bad.

Have an easy sacral week!
Claire

Claire Short, Registered Osteopath, runs The Ashgrove Clinic in Higham Ferrers. Send your questions to claire@ashgrovehealth.co.uk or Tweet to @AshgroveClinic

Waiting for an appointment with a PHYSIOTHERAPIST?

**In pain?
Not sure what exercises to do?**

Our Chartered Physiotherapist can see you face-to-face and help you get back to your normal life.

Call us now if

- You've had an operation and you're waiting for a physiotherapy appointment.
- You want to get better at your sport after an injury.
- You are suffering with Chronic Pain.
- You're not sure if we can help.

**Come in for a
FREE 20 minute consultation.**

Call us now on 01933 328020
and our physiotherapist will find out whether we can help you.

Whether you've got chronic pains, pains from aging, or sports injuries we're here to help you get better and better.

Physiotherapy | Osteopathy | Cranial osteopathy
Gait analysis | Podiatry | Hypnotherapy | Acupuncture
CBT | Shoulder treatments | Sports injury therapy
Counselling | Rhythmic movement therapy | Injury rehab

**GET YOUR
FREE
CONSULTATION
TODAY**

The
Ashgrove
Clinic
— Higham Ferrers —
Call 01933 328020

www.ashgrovehealth.co.uk | 01933 328 020

13 Lancaster Street, Higham Ferrers, Rushden, Northamptonshire, NN10 8HY



North Northamptonshire Council

Notice is given that the following applications have been received by North Northamptonshire Council – Thrapston Office together with the last date for making representations:

> DEENE

Reserved matters: access, appearance, landscape, layout and scale in respect of the creation of two key phase 4 substations including: access, parking area and drainage, pursuant to 19/01219/OUT "Application for outline planning permission with all matters reserved except for means of access in relation to the highway access from the A43 and means of access and landscaping in respect of the causeway crossing from Zone 1, for the development of a mixed use urban extension to include: residential development of up to 3,500 dwellings (C3), up to 1,000m2 of A1-A5, D1 and D2 uses within two local centres, up to 1,000m2 of D1/D2 (community building/changing rooms uses), two primary schools (D1), a 0.5 hectare reserve site in Zone 3 for flexible land use (education or informal open space), green infrastructure

including formal and informal open space, wildlife corridors, landscaping, allotments/orchards and play areas, primary street and pedestrian and cycle network including diversions to existing PROWs, connections to the surrounding highway, sustainable urban drainage network, utilities and transport infrastructure and any necessary groundworks and demolition, and extension to Local Wildlife Sites" at Priors Hall Site Kirby Lane Deene NN17 3EJ (Part3) (Info) NE/21/01205/REM (28 September 2021)

> COTTERSTOCK

Erection of external linking structure and alterations (new openings and fenestration) to an existing ancillary domestic barn to allow for the change of use of an agricultural building and associated land to a dwelling and garden at Church Farm Buildings Main Street Cotterstock PE8 5HD (LBRegs) (Info) NE/21/01253/LBC (28 September 2021)

> OUNDLE

Change of use to residential property (Class C3) and alterations to internal arrangement of No 20 at 20 West

Street Oundle (LBRegs)LB/CA (Info) NE/21/01212/LBC and NE/21/01211/FUL (28 September 2021)

> KINGS CLIFFE

To build a single bay Oak Framed garage with Double hip roof. To be clad in soft oak with the roof in Cedar shingle. To be mounted to a concrete base at Two Hoots Church Walk Kings Cliffe PE8 6XD (Info) (LB/CA) (Info) NE/21/01247/FUL (28 September 2021)

> BULWICK

Variation of condition 3 to allow for an increased opening period between 1st March and 23rd December inclusive, pursuant to application 12/01519/FUL: New touring caravan park and the conversion of disused cattle sheds for its ancillary facilities at New Lodge Farm Laxton Road Bulwick NN17 3DU (Info) NE/21/01027/VAR (28 September 2021)

> COTTERSTOCK

Demolition of existing barn; Change of use of an agricultural building and associated land to a dwelling and garden; Erection of a new garage building, greenhouse and

NOTICE OF PLANNING APPLICATIONS RECEIVED

external linking structure; Alterations to an existing ancillary domestic barn including new openings and fenestration at Church Farm Buildings Main Street Cotterstock PE8 5HD (Info) (LB/CA) (Info) NE/21/01252/FUL (28 September 2021)

> KINGS CLIFFE

New build chalet style single family dwelling with attached garage at 45B West Street Kings Cliffe PE8 6XB (LB/CA) (Info) (Info) NE/21/01152/FUL (10 October 2021)

The reason for applications being advertised is as follows:

Part3 - Town and Country

Planning (General Development Procedure) Order 2015.

Part16 - Town and Country Planning (General Development Procedure) Order 2015.

Info - Non-statutory - included for information only.

LB/CA - Planning (Listed Buildings and Conservation Areas Act 1990.

LBRegs - Planning Rob Harbour, Assistant Director Growth And Regeneration

Dated 4 September 2021

Consultation deadlines will differ for each application.

You can see details of these applications at www.east-northamptonshire.gov.uk/planningapplications.

For details of how we treat your data, please see our Privacy Statement: www.northnorthants.gov.uk/privacynotices (Listed Buildings and Conservation Areas) Regulations 1990.

Consultation deadlines will differ for each application. Please go to www.east-northamptonshire.gov.uk/planningapplications for details.

Internal Designs
www.addingtons-bathrooms.co.uk



External Designs
www.addingtons.net

Visit Our Higham Ferrers Kitchen & Bathroom Showroom



First Class Design & Supply | Design & Installation

Expect more, receive more...

- Designs to Inspire
- First Class Installation
- 10 Year Warranty
- No Subcontractors
- Supply Only Option
- Employed Craftsmen

**5 Wood Street, Higham Ferrers
off the Market Square**

01933 355687



DOVE GROUP

FAMILY-OWNED BUSINESS GROUP ESTABLISHED 1986

Quality front & garage doors

Exquisite outdoor living

Security solutions



SHOWROOM BY APPOINTMENT

With 35 years of valuable experience in the industry, The Garage Door Centre specialises in bespoke garage doors, side doors and front entrance doors.

Samson offers luxury outdoor living products for your home and garden, as well as physical security solutions to keep your property safe.

Our Showroom will be open if the pandemic rules permit it. To keep everyone safe during your visit, please wear a face covering and maintain a 2m distance at all times.

6-8 Meadow Close, Finedon Road,
Wellingborough, Northants NN8 4BH



Nene Valley News - EVENTS

> RAUNDS MAYOR'S SHOW

Sunday 19th September
12 noon-5pm

Bassfords Recreation Ground, Raunds. Free entry. info@raunds-tc.gov.uk. Good old fashioned fun for all the family, Live music, Joker Squad, Fair Ground and lots lots more.

> RAUNDS AUTUMN LITTER PICK

Saturday 25th September
10am-12 noon

Meet at Saxon Hall
All equipment provided.

> GET OWT (OUT WITH TODDLERS) HALL PARK, RUSHDEN NEAR THE PLAY AREA

Every Friday 9.30am-10.30am

No booking needed: parents/carers and toddlers are welcome to just come along and collect an activity pack. Details from Emma Croxon at emma@whitefriarschurch.org.uk or 07957 080074. Organised by Whitefriars Church, Rushden, and open to all.

> MORNING WORSHIP

Sundays 5th and 12th September,
10.30am

Whitefriars Primary School, Boughton Drive, Rushden NN10 9HX. No need to book. Online service also available - details on www.whitefriarschurch.org.uk and from office@whitefriarschurch.org.uk

> HIGHAM DEANERY (CHURCH OF ENGLAND) BEER & HYMNS EVENT

Wednesday 8th September, 7.30-9pm

The Swan, Newton Bromswold
All welcome, free admission.

> RIDE & STRIDE SPONSORED WALK/CYCLE/HORSE RIDE

Saturday 11th September, 10am-6pm

This annual event is the foremost annual fundraising event to help preserve churches and chapels and keep them active in our communities as well as a great day out discovering England's churches. More details are available at www.nhct.org.uk/index.php/bicycle_ride or from Liz Doherty on 07713396130, emdoherty@sky.com. Individuals and churches can also support the work of the Northamptonshire Historic Churches Trust by becoming a Friend. More details are available at www.nhct.org.uk/index.php/membership

> COUNTRYSIDE WALK

Sunday 12th September

Circular walk of about four miles near Keysoe and Little Staughton, starting at Keysoe at 10.30am. Please contact Andrew Presland at andrew.presland.harborough58@gmail.com or 01933 316927 for more details. Organised by Whitefriars Church, Rushden, and open to all.

To submit your event please contact us via our website www.nenevalleynews.co.uk or call 01522 692542. Please supply in the following format: Date, event, place, time, admission fee (if applicable), contact information, 15 word description.

Last Night at the Proms

On Saturday 25th September 2021 at 7.30pm the award-winning Northampton Male Voice Choir (NMVC) together with the GUS Band and special guest soprano soloist Emily Haig will present its annual concert 'The Last Night of the Proms' conducted by its charismatic musical director, Stephen Bell. Watch out! When Stephen's about, absolutely anything can (and often does) happen!

With a mixture of Last Night favourites for you to sing along to NMVC bring you a fantastic range of music from Ron Goodwin's '633 Squadron' to a rousing selection of songs from NMVC and a Last Night sing-a-long with Emily Haig including favourites such as 'Jerusalem', 'Rule Britannia' and 'Land of Hope and Glory'. Audience participation will be essential.

A night simply bursting with music. Not to be missed! The concert venue is the Spinney Theatre, Spinney Hill Road, Northampton NN3 6DG.

Tickets are available from choir members, online from www.ticketsource.co.uk/nmvc/t-gqlllk or from David Walsh on 01604 831455.

NMVC website: <https://www.nmvc.co.uk>

NMVC YouTube channel: <https://www.youtube.com/channel/UCWCKnjss8p1LrOINonSf0KQ>

Follow NMVC on Facebook, Twitter and Instagram

For Emily Haig see www.emilyhaigsoprano.co.uk

For the Gus Band see www.thegusband.com

QUALITY PETROL LAWMOWERS FROM £169

Mowerman

GARDEN MACHINERY LTD

DOMESTIC & COMMERCIAL

- SERVICE & REPAIR
- INHOUSE WORKSHOP
- SUPPLIERS OF STIHL, CUB CADET, ATCO, WOLF TOOLS AND MUCH MORE
- PARTS AVAILABLE
- COLLECTION AND DELIVERY SERVICE



MOWERMAN GARDEN MACHINERY LTD
 UNIT 120 • LEYLAND TRADING ESTATE • IRTHLINGBOROUGH ROAD
 WELLINGBOROUGH • NORTHAMPTONSHIRE NN8 1RT
 TELEPHONE 01933 274410
enquiries@mowermanlawnservices.co.uk



Nene Valley news

CLASSIFIEDS

Deadlines for all classifications: 5pm Monday prior to issue date. A complete version of our Terms and Conditions can be found online at www.nenevalleynews.co.uk. Pay by credit/debit card or cheque. All major credit/debit cards accepted. For help and information please call 01522 692542 or visit www.nenevalleynews.co.uk

ACCOUNTANCY

Jon Essam & Co Ltd

Chartered Accountants

- Free initial consultation, business advice and quotation
- Tax return, Landlord, Sole Trader, Partnerships and Limited Company clients supported
- Bookkeeping, VAT/MTD submissions
- Payroll bureau, CIS processing and Auto-enrolment services
- All accountancy software brands supported

Email to arrange a free consultation with a chartered accountant: info@essamca.co.uk
 Tel: 01832 730280

New website: www.essamca.co.uk

Follow us for updates:

www.facebook.com/jon.essam.accountant

23 Cottingham Way, Thrapston, Kettering, Northants, NN14 4PL

HOME IMPROVEMENTS

!!!GET PLASTERED!!!

For all your plastering needs.
 No job too small, no fuss, no nonsense!
 Reliable and trustworthy service at the best possible price.
 Call Steve for free, friendly advice or a free quote.
 07703 720138 • 01933 430051

Simon Vale

Painter & Decorator

High quality • Competitive prices
 Free estimates

07568 587367 or 01933 228671

HOME SERVICES

ENSIGN GAS ENGINEERS

We are a FAMILY-RUN LOCAL COMPANY offering installation, service and repair of gas cookers, hobs and pipework

NO CALL OUT CHARGE

Tel: 01933 318327

Domestic and Commercial work
 ELECSA Part P Approved Contractor

- Rewires
- Garden electrics
- Fault finding
- Testing and inspection
- Landlords reports
- Fuse board / Consumer unit changes
- Extra sockets and lighting
- Smoke alarms

A. Seaton Electrical Ltd.
 m: 07952 249885 t: 01234 708115 e: seatonsparky@gmail.com

PGR Plumbing & Heating
 Tel: 01933 698116
 24 Hr Emergency Service
 Email: pgrplumbing@btinternet.com
 Web: www.pgrplumbing.co.uk

Specialists in Gas Installations

Gas Servicing & Maintenance
 Landlords Gas Safety Certificates

Central Heating Powerflushing
 Household Plumbing & Drainage

DC Heating
 SAFE IN OUR HANDS

THE LOCAL PROFESSIONAL HEATING ENGINEERS YOU CAN TRUST

REPAIRS • SERVICING
 INSTALLATIONS

WARM AIR INSTALLATION, SERVICING & REPAIR

Phone today for a free quotation on
 T: 01933 392719 • M: 07909 232107
www.dcheatingengineers.co.uk
 MC Heating Services Ltd Trading as DC Heating

Plumber — local & fast!
RGJ PLUMBING AND HEATING

Plumbing

- Full bathroom installation (inc carpentry & tiling)
- Burst pipes & leaks
- Toilet repair/replace
- Taps, sinks repair/replace
- Showers repair/replace & pumps

Heating

- Full central heating installation
- Boiler servicing/breakdowns
- Landlord safety certificates
- Power flushing
- Radiators & valves
- Pumps & cylinders

No call-out charge!
 City & Guilds Qualified
 All work guaranteed

rgjplumbing@outlook.com
 01933 588005 or 07921 469471

PET SERVICES

Country Companions Pet Services

Services include:

- Doggy Day Care
- Dog Walking
- Puppy Visits
- Pet Sitting
- Cat Visits
- Home Boarding

Contact Sarah on:
 07766 523292
www.ccpetservices.co.uk
sarah@ccpetservices.co.uk

PUBLIC NOTICES

NORTH NORTHAMPTONSHIRE COUNCIL

ROAD TRAFFIC REGULATION ACT 1984 - SECTION 14

NORTH NORTHAMPTONSHIRE COUNCIL (CRANFORD ROAD, GREAT ADDINGTON)

(TEMPORARY PROHIBITION OF THROUGH TRAFFIC) ORDER 2021

NOTICE IS HEREBY GIVEN that North Northamptonshire Council have made an Order the effect of which is to prohibit traffic from proceeding along that length of Cranford Road, Great Addington as set out below.

LENGTH OF ROAD TO WHICH RESTRICTION APPLIES: That length of Cranford Road, Great Addington from right of way MA3 to Fallowfields.

REASON FOR RESTRICTION: The restriction is required for safety during installation of fire hydrant.

PERIOD OF CLOSURE: The proposed Order will come into effect on 8th September 2021 and will continue in force for a period of eighteen months. An application may be made for the approval of the Secretary of State for Transport for the Order to be extended if this proves necessary. However, the restriction specified will have effect only at such times and to such an extent as is indicated by the display of signs prescribed by the Traffic Signs Regulations and General Directions 2016.

EXPECTED DURATION: It is expected that the road will be restricted for three days.

ALTERNATIVE ROUTES: use Cranford Road, Thrapston Road, Woodford Road, Mill Road, High Street, Addington Road and Woodford Road.

Dated this 4th day of September 2021
 DEBBIE CARTER-HUGHES
 Executive Director LGSS Law Ltd

PKG/T21/314

If you require any further information please contact Gary Thorp ref:- 21/22 – N147 on 01604 651072.

KM Media & Marketing
 NEWSPAPERS | MAGAZINES | WEBSITES



To advertise in Nene Valley News please call 01522 692542

Family NOTICES

Nene Valley News can help you make those important family announcements.



Walker, Aaron/
 Hunt, Nicola
 Married on April 2 2014,
 at St Andrews Church.
 The couple had their
 honeymoon in Paris.



Chloe Booth have a
 wonderful day.
 Love from Mummy, Daddy,
 Nanna & Grandad xxx

For help and information to place your notice please call 01522 692542 or visit www.nenevalleynews.co.uk

Student awarded first prize in national stone carving competition

Freya Morris, Level 2 Stonemasonry student at Moulton College, has been awarded first prize in the stone carving category of the Grinling Gibbons national stone and wood carving competition. As part of her award, Freya will take up a residential course at the Prince's Foundation Summer School in Scotland, as well as receiving a substantial cash prize.

The Grinling Gibbons Society, set up in memory of the legendary artist, sculptor and artisan, ran this year's competition to mark the 300th anniversary of his death.

The Grinling Gibbons Tercentenary Award celebrates the talents of emerging craftspeople and carvers, championing the preservation of traditional skills.

Freya said: "I can't quite believe I was awarded first prize in the stone carving category. I am overwhelmed and so proud that my piece has been recognised in a national competition."

"My aim was to draw upon the complexity of Gibbons' compositions, referencing some of his motifs to produce a carving that responds to Covid-19. The piece reflects my concerns over the political handling of the pandemic in the UK and I am so pleased that the judges felt that I had managed to achieve this."

After making it through the initial stages, Freya was one of 11 finalists

assigned a personal mentor, a master carver who provided expert advice on approach to the judging. An independent panel including leading sculptors and artists, gallery directors, patrons and collectors led the judging process on 2nd August.

Freya's piece is currently on display at Bonhams, New Bond Street in London, where it will remain until mid-September. The piece will then move to Compton Verney Art Gallery and Park in Warwickshire.

The celebrations for Moulton College's stonemasonry department continue following the unveiling of a series of intricate animal sculptures in Wellingborough. Staff and students at the College carved the sculptures as part of an educational project recognising the history of Croyland



Moulton College student Freya Morris working in the College's stonemasonry workshop

Gardens, formerly Wellingborough Zoo. The sculptures represent some of the animals previously kept at the zoo including an elephant, polar bear, chimpanzee, lion and a waddle of penguins.

Moulton
COLLEGE



Freya Morris's carving



RESIDENTIAL & COMMERCIAL WASTE COLLECTION

Call us today!

01933 315872

Brindley Close, Rushden,
Northamptonshire NN10 6EN

For more information visit:
www.intercountyltd.co.uk

SINGLE BULKY ITEMS OR FULL HOUSE CLEARANCES

If you have any cardboard, paper, furniture, electrical waste, pallets, garden waste etc please give us a call for a very competitive price!

We can normally clear the waste in 72 hours from the point of order, but we also provide an emergency service, so please give us a call should you have a requirement!

- Fully Licensed
- Diverted from Landfill
- WEEE Waste
- Reliable & Friendly Staff
- Single Bulky Items
- Full house clearances
- Residential & Commercial Services

OUR SERVICES:

- Declutter Service
- Property Clearance
- Garden Clearance
- Loft Clearance
- Office Clearance
- Sharps Removal
- Window Cleaning
- Extreme Cleaning
- Biohazard Cleaning
- End of Tenancy Cleaning
- Decontamination Cleaning
- COVID-19 Fogging
- Carpet Cleaning
- Void Property Cleaning
- Wheelie Bin Cleaning
- Hazardous Waste Removal
- WEEE Electrical Waste
- Graffiti Removal
- Skip & Grab Hire
- Confidential Shredding
- Jet Washing Service
- Touch Point Cleaning



BIN CLEANING from £3.50

Regent Wrought Iron Ltd

The Regent Street Wrought Iron Works

180-186 Regent Street, Kettering, Northants NN16 8QH

PHONE 01536 485892

High quality gates and fencing hand made on the premises since 1963



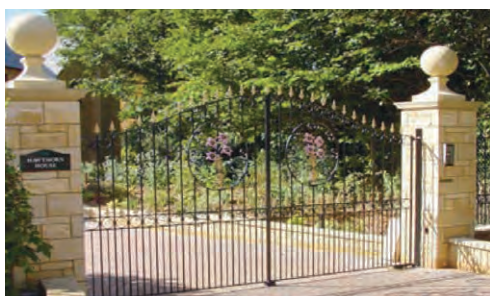
Single gates from £60.00
Side entry from £99.00
Double gates from £120.00



We have 18 styles to choose from. All on show in our showroom. Full fitting & painting service.

Automatic Estate Gates

- Highest quality equipment
- Up to 14' opening
- Flat draped or bow topped
- Fully installed & painted
- **FREE** first year service
- Guaranteed for 2 years
- Full back up & yearly service
- We have been installing automation since 1998
- Full pressure tested and certified to BS 12453



We can automate your existing gates (if suitable) or upgrade old equipment to meet BS 12453 safety regulations



Has your garden wall/fence had it? Replace it with wrought iron!

LASTS A LIFETIME • USUALLY FITTED IN A DAY

BEAT THE BURGLAR – Free security locking bolts fitted to all our side entry gates or full range of mortise locks fitted

Visit our website for our online catalogue www.regentiron.co.uk

wilson browne
SOLICITORS

Will  
Not won't 

Thinking about your Will might feel upsetting, but our caring and knowledgeable team is ready to help. Now is the right time to plan ahead, for everything and everyone you leave behind.

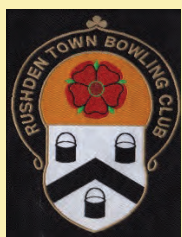
We're here to help.

0800 088 6004

enquiries@wilsonbrowne.co.uk

wilsonbrowne.co.uk

All the help you need.



RUSHDEN TOWN BOWLING CLUB

144 Northampton Road, Rushden, Northants NN10 6AN

01933 312680 • rtibc@tiscali.co.uk

www.rushdentownbowlsclub.co.uk



OPEN DAY

on Sunday 12th September from 1pm to 4pm

(Plus 4 free follow up sessions – 2 hours each)

Want to try out bowls for **FREE**? Then come and join us.
Please email or telephone for more information.

We are a members club renowned throughout the county for its first class greens inside and out.

Open to all, young and old...
our members' ages range from 8 to 98.

Learn to bowl from the age of 8. We have a good junior section. We have the facilities for all disabilities to play.



THEATRE IS BACK!

AUTUMN 2021 HIGHLIGHTS

For full listings, visit castletheatre.co.uk

CASTLE THEATRE

Wellingborough



Fri 3 Sep, 7.30pm



Thu 9 Sep, 7.30pm



Fri 10 Sep, 7.30pm



Mon 20 Sep, 7.30pm



Thu 30 Sep, 7.30pm



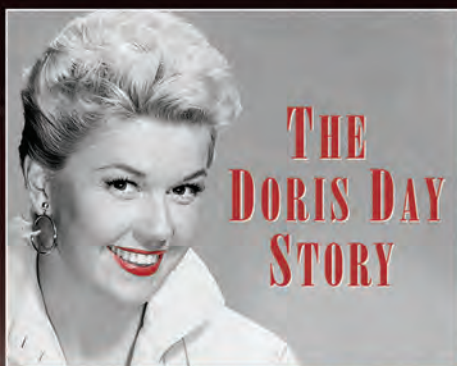
Fri 1 Oct, 7.30pm



Sat 2 Oct, 7.30pm



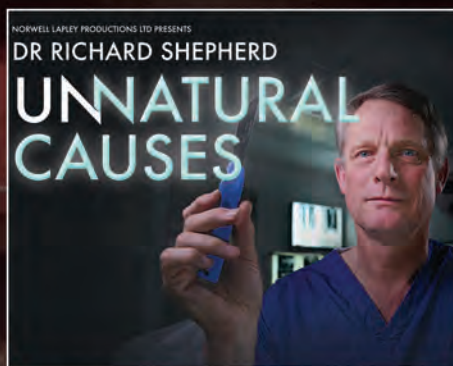
Fri 8 Oct, 7.30pm



Tue 12 Oct, 7.30pm



Wed 20 Oct, 7.30pm



Fri 22 Oct, 7.30pm



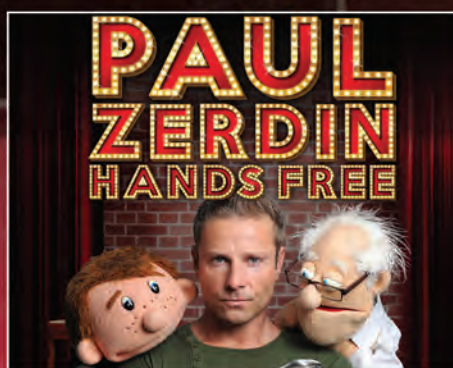
Fri 29 - Sun 31 Oct



Wed 17 Nov, 8pm



Thu 18 Nov, 7.30pm



Sat 20 Nov, 7.30pm



when you visit
castletheatre.co.uk

Box Office 01933 270 007

www.castletheatre.co.uk