

Nene Valley

news

YOUR LOCAL INDEPENDENT COMMUNITY
NEWSPAPER FOR EAST NORTHAMPTONSHIRE

Telephone:
01522 692542

We want to hear from you,
so please submit your
news story or event at
www.nenevalleynews.co.uk

INSIDE
this issue



**SPOTLIGHT ON
HOMES AND
GARDENS**

PAGE 04



**SU POLLARD
STARS IN HARPY AT
CASTLE THEATRE**

PAGE 10

NEWS IN BRIEF

**Donate a gift for a
patient in hospital
this Christmas**

Northamptonshire Health Charity is looking for Christmas gifts to give to people in hospital on Christmas Day. The charity supports Kettering General and Northampton General Hospitals and the community and mental health hospitals across the county at Berrywood, Isebrook, Corby, and St Mary's.

Suitable items are puzzle books, slippers and socks, toiletries, lip balms and dominoes for elderly patients and toys, games and activities for the children's wards and short break centres. For infection control, only new items can be accepted in the original packaging and not gift wrapped. You can drop your items into the charity office which is in the Springfield building next door to the Urgent Care Centre, a short walk from A&E at Northampton General Hospital. Or, if you would prefer to drop donations to KGH please call the charity office on 01536 491569 to arrange. Alternatively, you can make a donation.

For more information, call 01604 626927, email greenheart@nhcf.co.uk or visit www.northamptonshirehealthcharity.co.uk

Northants man conquers London Marathon for deaf children

Rushden resident Russell Shachar completed the London Marathon on Sunday 3rd October in support of the National Deaf Children's Society.

Russell finished the marathon distance of 26.2 miles in a time of 5 hours, 35 minutes and 15 seconds. So far he has raised over £2,200 for the charity, which supports the UK's 50,000 deaf children and their families. He hopes to exceed £3,000.

Russell chose to run for the National Deaf Children's Society as his son Kobe was born with moderate to severe hearing loss and wears two hearing aids. He was identified as deaf by the newborn hearing screening programme.

Russell (31) is a Sales Manager and lives in Rushden, Northants, with his wife Carrie (30) and children Kobe (4) and Mylo (2).

Russell said: "When you cross over the start line, the huge sense of pride and adrenaline is overwhelming and the crowds around Tower Bridge and down to the Mall are truly electrifying. It's an out of this world experience, where the crowds make you go from average Joe to a sporting hero. The achievement and gratification when you cross the line can never be forgotten. If you've never done it, I highly recommend you give it a go."

"My family experienced at first hand the huge difference the National Deaf Children's Society makes in young families' lives with love, care and attentiveness. Carrie and I can wholly agree that without

the charity's support, Kobe wouldn't be as happy or as confident as he is today. We all thank them so much for what they've done."

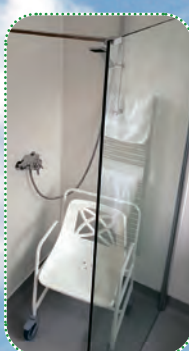
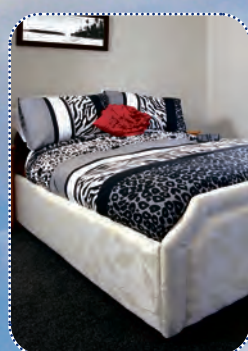
Elle Billinge, who supports fundraisers for the National Deaf Children's Society, said: "I want to say a huge thank you to Russell for taking on this epic challenge for us. Conquering a marathon is a truly awe-inspiring achievement, and we're so grateful."

"The National Deaf Children's Society is dedicated to supporting the UK's 50,000 deaf children and their families. The efforts of selfless fundraisers like Russell will help us to keep on doing our vital work, now and into the future."



Russell Shachar going the distance for National Deaf Children's Society

SHOWROOMS: 69-71 WASHBROOK RD • RUSHDEN • NORTHANTS NN10 6UR action2mobility.co.uk



Wet rooms
and easy access
bathrooms
supplied
and fitted

Action²Mobility
THE REGION'S LEADING MOBILITY AID CENTRE

Phone us for
delivery if you're
shielding*

Simply make your choice and
phone through your order to
0800 698 2588

*Limited to 25 miles radius from our
showrooms in Rushden

CALL FREE: 0800 698 2588

MON-FRI 8am-4.30pm

FREE PARKING

Stockist of Cosyfeet and Sandpiper shoes

STAIRLIFTS: FULLY GUARANTEED, FREE HOME SURVEY

WILDLIFE NEWS

WORDS BY
ROY BURRELL

For obvious reasons our farming industry (for that's what it is) and our natural wildlife are very closely linked. In recent weeks they have been following similar production targets as far as the weather allows, with different but linked hopes.

This is the season of harvest; the timing of collecting crops seems to come steadily earlier every year, though the wild harvest (like nuts and seeds), with no unnatural interference to disturb their inborn timing, shows at the same time each year (depending on the weather). All our plants and animals need to replace 'natural losses' with the means to start again next year.

But there will be changes in numbers; some will prosper and increase populations, while others may have a "bad year", with extreme examples causing losses – complete extinction in the worst cases.

Naturalists studying specialist areas will analyse, looking for ways to improve yields, or pest/disease resistance, but without specialist equipment we rely on what we can see "with the naked eye", so we make our own judgements about whether any particular animal or plant has done better or worse than

expected. In recent years some of my judgements (hampered by restricted mobility) included not seeing swallows or martins, or hearing the screeching swifts (all noted for speed and manoeuvrability when chasing insects).

One insect, a hunter itself, I saw late in the summer season. For its size it is an impressive creature, found in many of our watery reserves, seen in silhouette against the bright afternoon sun making identification a little uncertain. It was one of our family of dragonfly/damselfly species, probably a ruddy darter – though the whole list is impressive.

Our insects, of course, are under a death sentence. Their flimsy bodies cannot carry them through winter's nights. In the next week or two they will "shut up shop" (normally die). There is still plenty to find, however, if we do venture out in the colder months. For many this will include reviewing the year's photos, while for others (like me) there will be our mental pictures (like that ruddy darter). And think of the natural break of this year's end, as the geese now flying in from Europe are telling us.

GENEALOGY JOTTINGS

WORDS BY
JAN PEARSON

Have you ever searched for an ancestor in one area, only to find them somewhere else – where you would never have thought of looking?

The years between 1760 and 1840 were those of the Industrial Revolution. Factories were springing up all over the country, mechanisation was taking over from cottage industries and large scale manufacturing was coming on board.

From working out in the fields in all weathers and not being paid very well, the bright lights of the cities called folk like moths to a flame. Housing was more substantial and wages were higher. However, housing proved to be cramped and even longer hours were worked than before in many cases. I had an ancestor who walked from Leiston in Suffolk to Luton in Bedfordshire – over 100 miles – in order to seek his fortune.

I was researching a tree for someone recently and discovered that one chap moved from Suffolk, where he was born, over to Bath in Somerset and then back east to Dover in Kent, where he spent the rest of his life working as a boot and shoe

maker. Luckily, he had an uncommon name and so was able to be tracked successfully, but a lot more investigation is needed if your ancestor was John Smith or similar!

However, it may be that your ancestor undertook an apprenticeship and some of the Apprenticeship Agreements still exist. They are scattered far and wide: some are with the London Metropolitan Archives, others are held by the Guildhall Library in London but a few are also held in the County Archives. However, the indexes of Apprentices and Masters can be viewed at the National Archives at Kew. Check out the TNA Research Guides on their website. The building is now open and so, if you have any trips planned to London, you may wish to visit, but don't forget to book! See their website at: www.nationalarchives.gov.uk

Genealogy Specialists, Tracing Our Past, Discovering Our Genes (TOP DOG)
www.genealogy-specialists.com

NORTH NORTHAMPTONSHIRE COUNCIL TO PAY REAL LIVING WAGE

North Northamptonshire Council has underlined its commitment to its staff, announcing that it will pay the real living wage.

At present, some employees are paid the national living wage which is currently £8.91 for those aged over 23.

North Northamptonshire Council, under the direction of its political leadership, has been holding productive discussions with unions and staff in order to move to a fairer approach.

The real living wage is currently £9.50 per hour in the UK (excluding London). It is considered by many organisations, including North Northamptonshire Council, to be a fairer rate of pay because it better reflects the cost of living.

Councillor Jason Smithers, Leader of the Council said: "I am delighted to announce

that North Northamptonshire Council will be paying the real living wage. The real living wage will provide a fairer pay rate for our dedicated and hardworking staff and I believe this is a major step in the right direction. We will be looking to implement this minimum pay rate as soon as we practically can and will be backdating it to the 1st April 2021."

Councillor Helen Harrison, Executive Member for Adults, Health and Wellbeing said: "This is without a doubt a significant commitment and one we are proud to make. Implementing the higher real living wage rate will benefit many of our care staff who currently earn the lower national living wage.

"We hope this will go some way in helping show our appreciation for the work that they do but also help us more effectively attract and retain

staff working in adult social care and in other areas of the council."

Yolande Morgan, UNISON Lead Convenor, North Northamptonshire Council said: "The Trade Unions have been working closely with North Northants Council on the introduction of the real living wage and welcome this announcement.

"Local Government staff, particularly care staff, have been at the front line throughout the pandemic. Paying the real living wage will really help low paid staff to pay their bills and buy food.

"It is also an investment in council services and in North Northamptonshire. It means that people are more likely to work for their local council, to stay living locally and spend their income locally.

"This is a good news story for North Northamptonshire."

KM Media & Marketing
NEWSPAPERS | MAGAZINES | WEBSITES



To advertise in
Nene Valley News
please call
01522 692542

Quality Repairs To Windows & Doors

THRAPSTON GLAZING
Est 85 **WINDOW & DOOR REPAIRS**

FREE QUOTES **FREE GENUINE ADVICE**

QUALITY REPAIRS TO ALL MAKES OF WINDOWS, DOORS AND CONSERVATORIES SUPPLIED AND FITTED BY ANY COMPANY.

REPLACEMENT GLASS UNITS, NEW LOCKS, NEW HINGES, NEW LETTERBOXES, NEW HANDLES ETC... WITH COMPLETE FITTING SERVICE

WE ALSO SERVICE WINDOWS, DOORS AND PATIO DOORS ADJUSTING AND LUBRICATING AS WE GO, BADLY ADJUSTED DOORS ARE THE MAIN REASON FOR LOCK FAILURE.

WE STOCK AND SOURCE THOUSANDS OF SPARE PARTS TO SUIT ALL MAKES OF WINDOWS AND DOORS

OTHER SERVICES INCLUDE, CUT GLASS, TOUGHENED GLASS AND GREENHOUSE GLASS ALL DELIVERED TO YOUR DOOR WITH FITTING SERVICES IF REQUIRED.

ALL OUR FITTING ENGINEERS HAVE OVER 30 YEARS EXPERIENCE WORKING FOR US.

PLEASE CALL OR EMAIL US FOR A FREE QUOTATION

01832 734570
www.thrapstonglazing.co.uk
windowanddoorrepairs@talktalk.net

Free Quotations • No Obligation

Locks • Hinges • Glass Units • Adjustments • Servicing • Letterboxes • Handles • Window Locks • Door Locks

Want to place an advertisement or submit an article?

If you wish to contribute or have any comments please email news@nenevalleynews.co.uk or call 01522 692542. To advertise, call 01522 692542. Alternatively you can email advertising@nenevalleynews.co.uk

If you are not receiving your copy of Nene Valley News, please email distribution@km-media.co.uk or telephone 01522 692542.

If you would like to receive this publication as a download, Nene Valley News is available online as a pdf at nenevalleynews.co.uk.

You can also subscribe to Nene Valley News for £1.50 per issue.

Nene Valley News is produced by KM Media & Marketing, County House, 9 Checkpoint Court, Sadler Road, Lincoln LN6 3PW.

Copy dates for Nene Valley News

Publication date: Saturday 30th October
Articles to the editor by: Wednesday 20th October

Publication date: Saturday 13th November
Articles to the editor by: Wednesday 3rd November

KM Media & Marketing
Your partner in publishing

Appeal to support older and vulnerable people over the winter months

Northamptonshire Community Foundation has launched its annual appeal to support older and vulnerable residents throughout the winter period.

The Foundation is the leading independent grant-making charity in the county and its annual Winter Well-being appeal has raised £235,000 since 2010 to protect some of the most vulnerable members of our communities.

Winter can be a lonely and worrying time. With many older and vulnerable people living alone in addition to the ongoing public health crisis, many people are still cautious about leaving their homes. The uncertainty of the coming winter months will lead to increased social isolation again this year.

This year, the appeal needs the help of the local community more than

ever. The fuel crisis is set to take hold of the nation and one in 10 households in Northamptonshire currently lives in fuel poverty, meaning that they spend more than 10% of their income on fuel.

Victoria Miles DL, CEO of Northamptonshire Community Foundation, said: "Fuel poverty has always been an issue and the Foundation has stepped up and raised annual funds in the past for the most vulnerable in our communities who need help and support during the cold winter months. This year will see fuel prices rocket and we will unfortunately see more people having to choose whether to heat their homes or cook a hot meal. We are pleading with those who can to give generously to our Winter Well-being appeal so we can make sure the funds reach people in need this winter."

Money raised will be awarded in the form of grants to local community groups and small charities whose activities protect and help older and vulnerable people in supported environments.

The campaign has had a great start, with the Foundation's Deputy CEO and Grants Director, Rachel McGrath taking on the mighty Thames Path Challenge to raise vital funds for the appeal. Over the course of two days, Rachel walked 100 kilometres along the River Thames and raised over £1,600 to kick off this year's appeal. Waitrose Rushden have also generously donated £333 from their Community Matters green coin scheme.

If you'd like to learn more and donate to the appeal, please visit www.ncf.uk.com/give/winter-wellbeing



NEW STYLES NOW IN

DB FACTORY SHOE STORE

HUGE CHOICE OF SHOES AT BEST PRICES

10% OFF*
WITH THIS ADVERT
QUOTE: NVX2141F
VALID UNTIL 15/01/22

DUNLOP SKECHERS MARCO TOZZI

www.dbfactoryshop.co.uk **FREE ROADSIDE PARKING** **Opening Mon - Sat 10am - 5pm.**
DB Shoes Ltd, 19-21 Irchester Rd, Rushden NN10 9XF **times Sun 10am - 4pm.**

EXTRA WIDE FEET? Visit our specialist shoe fitting centre next door!
Visit **www.widerfitshoes.co.uk** or call **01933 410305** to make an appointment

*10% discount excludes sale items

wilson browne
SOLICITORS

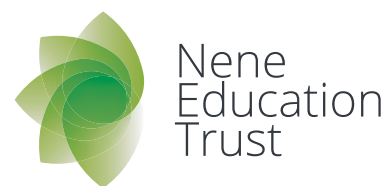
Will  
Not won't 

Thinking about your Will might feel upsetting, but our caring and knowledgeable team is ready to help. Now is the right time to plan ahead, for everything and everyone you leave behind.

We're here to help.

0800 088 6004
enquiries@wilsonbrowne.co.uk
wilsonbrowne.co.uk

All the help you need.



Nene Education Trust's
focus is raising aspirations
and developing character
in a positive environment.

The Nene Education Trust is a local network of schools based within East Northants & Wellingborough.

Scan the QR code to visit our website and find out more about the Nene Education Trust and our schools.



Who we are



Spotlight on > HOMES AND GARDENS



Addington's Associates



Addington's Associates



Addington's Associates

> ADDINGTON'S ASSOCIATES

"At Addingtons, we listen to all of your needs and requirements. We design, build and install the perfect bathrooms, kitchens and landscaped gardens to suit your style."

"We have sister companies that allow us to have exceptional craftsmen for each project, specialising in their field. Not only are we a Costantino Elite showroom but we are also AEG Premier Partners and an exclusive distributor for Montrose bathroom furniture."

"We ensure that the products we supply are of supreme quality with impressive design options, from bespoke coloured Doccia shower trays, Millboard composite decking and anti-fade astroturf to British made Mackintosh kitchen cabinetry!"

"We will certainly create a unique design that works to your taste and home, and with over 20 years' experience and a 10-year guarantee your space will stay as stunning long after we have left."

"Our teams of brilliant fitters – from plumbers, carpenters and landscapers to tilers, plasterers and decorators – are all employed and fully project managed. They

are experienced in their fields with the right qualifications to ensure a superb finish. See our portfolio of works, testimonials and full list of services on our websites."

Visit www.addingtons.net, www.addingtons.co.uk, and www.addingtons-kitchens.co.uk

> HIGH-QUALITY GARDEN MACHINERY AT AFFORDABLE PRICES IN WELLINGBOROUGH

Reduce the time and effort required to maintain your garden by equipping yourself with quality garden machinery. Mowerman's extensive range of garden machinery includes lawnmowers, hedge trimmers, brush cutters and more by leading manufacturers in the industry.

"Whether you're looking for a basic petrol-fuelled model or electrical cordless equipment, rest assured we stock them all."

"In addition to the sale of garden and agricultural machinery, we also provide equipment repair and maintenance and ground maintenance solutions. We also sell second-hand machinery by top brands to give you the opportunity to get high-end



Mowerman

machinery by top brands at discounted prices. Our second-hand machinery is professionally serviced to ensure efficiency and optimum performance."

"We source our products from leading manufacturers and reliable tradesmen. We sell brands from many different top manufacturers including: Aspen Fuels, Cobra, Wolf Garten, Echo Power Products, Cub Cadet, Lawnflite, Stihl and Bulldog Tools."

"We also offer expert grounds maintenance services including: lawn care and maintenance; hedge maintenance and shrub trimming; grass cutting, strimming and weed control, and site clearance."

Visit www.gardenmachinerynorthants.co.uk or call 01933 274 410.

> BESTBUYS – THE GREAT OUTDOOR STORE (HOT TUBS)

"At Bestbuys, we can help you discover your own personal oasis of calm – which could be just across your garden in your very own Hot Tub!"

"You can relax in the knowledge that with over 1,000 Hot Tubs installed locally by our award-winning engineers and over 19 years of experience servicing them, we can provide you with expert after sales service / advice and can help answer any questions you may have."

Internal Designs
www.addingtons-bathrooms.co.uk



External Designs
www.addingtons.net

Visit Our Higham Ferrers Kitchen & Bathroom Showroom



First Class Design & Supply | Design & Installation

Expect more, receive more...

- Designs to Inspire
- First Class Installation
- 10 Year Warranty
- No Subcontractors
- Supply Only Option
- Employed Craftsmen

5 Wood Street, Higham Ferrers
off the Market Square

01933 355687

"Being immersed, buoyant or massaged in water can help enhance your ability to relax and relieve the body in a variety of different ways, including: Relief from pain, swelling and stiffness; Joint mobilisation; Cardiovascular fitness; Muscle strengthening, maintenance and restoration and Improved circulation.

"Our range of Hot Tubs will leave you feeling relaxed and revitalised, with jet formations to target each muscle group and

features such as, LED Mood Lighting, Water Fountains and Bluetooth Sound Systems. Most of our Hot Tubs are currently in stock, so you could be enjoying a new Hot Tub sooner than you think.

"Visit our showroom in Wellingborough to see our range of Hot Tubs and other garden items including Garden Furniture and Barbecues to help you create your own special garden oasis."



10% OFF WINTER SERVICING

Mowerman

GARDEN MACHINERY LTD

DOMESTIC & COMMERCIAL

- SERVICE & REPAIR
- INHOUSE WORKSHOP
- SUPPLIERS OF STIHL, CUB CADET, ATCO, WOLF TOOLS AND MUCH MORE
- PARTS AVAILABLE
- COLLECTION AND DELIVERY SERVICE



MOWERMAN GARDEN MACHINERY LTD
 UNIT 120 • LEYLAND TRADING ESTATE • IRTHLINGBOROUGH ROAD
 WELLINGBOROUGH • NORTHAMPTONSHIRE NN8 1RT
 TELEPHONE 01933 274410
enquiries@mowermanlawnservices.co.uk



Enhance your lifestyle with a Hot Tub from...

BESTBUYS



Auckland - £6695

- 2 Seats + 1 Lounger
- 42 Jets (inc. 1 x 7" Power Jet)
- LED Lighting
- Bluetooth Sound System

Palm Cove - £6695

- 5 Seats + 1 Lounger
- 56 Jets (inc. 1 x 7" Power Jet)
- LED Lighting
- Bluetooth Sound System



Melbourne - £7295

- 5 Seats + 1 Lounger
- 55 Jets (inc. 2 x 7" Power Jets)
- LED Lighting
- Bluetooth Sound System

Sydney - £7995

- 5 Seats + 1 Lounger
- 62 Jets (inc. 2 x 7" Power Jets)
- LED Lighting
- Bluetooth Sound System
- Touch Screen Control Panel



Why buy your Hot Tub from Bestbuys?

- Over 1,000 Hot Tubs sold and installed locally by our Award Winning Engineers
- Most Hot Tub models available from stock
- Over 19 years' experience servicing our customers' Hot Tubs
- Expert after sales service
- Advice on your Hot Tub and Chemicals

*Prices do not include Standard Delivery and Installation. Please ask in store for more details.

01933 272699 www.best-buys.co.uk

BESTBUYS, NENE COURT, THE EMBANKMENT, WELLINGBOROUGH NN8 1LD

Normal Opening Hours: Mon-Sat 9:30am-6pm | Sunday 10am-4pm

All offers are subject to availability. Images are for illustrative purposes only. The management reserve the right to remove any offers without prior notice. Errors and omissions excepted. *Standard delivery is subject to installation access and pre-supplied appropriate power supply and base. Please ask a member of staff for more details.



**North
Northamptonshire
Council**

Notice of planning APPLICATIONS RECEIVED

Notice is given that the following applications have been received by North Northamptonshire Council – Thrapston Office, together with the last date for making representations:

>KINGS CLIFFE

Replacement of lounge patio doors with window and smaller existing window to be blocked up at 4A Forest Approach Kings Cliffe Northamptonshire PE8 6XG (Info) (LB/CA) (Info) NE/21/01438/FUL (9 November 2021)

Replacement of front door and frame at 4A Forest Approach Kings Cliffe Northamptonshire PE8 6XG (Info) (LB/CA) (Info) NE/21/01437/FUL (9 November 2021)

Restoration of outbuilding to be used as garage with habitable space above, ancillary to main dwelling, including a new roof, rebuilding of deteriorating walls, and the making good of the existing interior, windows and doors at 22 West Street Kings Cliffe

Peterborough Northamptonshire PE8 6XA (Info) (LB/CA) (Info) NE/21/01441/FUL (9 November 2021) (LBRegs) (Info) NE/21/01442/LBC (9 November 2021)

>DEENE

Replacement of north aisle and vestry roofs in terne-coated stainless steel; internal and external repair works at St Peters Church Deene Park Deene Corby Northamptonshire NN17 3EW (LBRegs) (Info) NE/21/01444/LBC (9 November 2021)

>RUSHDEN

Changes to fenestration including widening of kitchen window, addition of new window to dining room, and replacement windows and doors at Higham Park Barn Higham Park Road Rushden Northamptonshire NN10 0SL (LBRegs) (Info) NE/21/01086/LBC (9 November 2021)

>NASSINGTON

Single storey stone rear extension; replacement of two french doors/brick pier with bi-fold doors to the existing

rear extension and two new windows to the existing side elevation (reception room) at 65 Church Street Nassington Peterborough Northamptonshire PE8 6QG (Info) (LB/CA) (Info) NE/21/01449/FUL (9 November 2021)

>PILTON

Replacement oak-framed garden room at The Coach House Main Street Pilton Peterborough Northamptonshire PE8 5SN (Info) (LB/CA) (Info) NE/21/01452/FUL (9 November 2021)

The reason for applications being advertised is as follows:
Part3 - Town and Country Planning (General Development Procedure) Order 2015.

Part16 - Town and Country Planning (General Development Procedure) Order 2015.

Info - Non-statutory - included for information only.

LB/CA - Planning (Listed Buildings and Conservation Areas Act 1990. LBRegs - Planning (Listed Buildings and Conservation Areas) Regulations 1990.

**Rob Harbour, Assistant Director
Growth and Regeneration**

Dated 16 October 2021

Consultation deadlines will differ for each application. You can see details of these applications at www.east-northamptonshire.gov.uk/planningapplications.

For details of how we treat your data, please see our Privacy Statement: www.northnorthants.gov.uk/privacynotices

Consultation deadlines will differ for each application. Please go to www.east-northamptonshire.gov.uk/planningapplications for details.

**The
Ashgrove
Clinic**
Higham Ferrers
Call 01933 328020

**Book a FREE 20 minute
consultation if you're not sure
whether we can help.**



Badger the Dog

BADGER US WITH YOUR SHOULDERS!

Badger the Dog, our clinic mascot, says you don't need to have shoulder pain. Many of our practitioners have done specialist shoulder training and want to show you how to get out of pain.

Call us now if...

- ✓ Pain stops you moving your arms,
- ✓ Shoulder pain keeps you awake at night,
- ✓ You're not sure if you have 'frozen shoulder,'
- ✓ You require advanced shoulder techniques.

Get back to normal activities!

So, if you're in pain, waiting for rehab exercises, trying to improve your sport, or having problems lifting kids or other weights, call us today and take the first step to your recovery.

Physiotherapy | Osteopathy | Podiatry | Acupuncture
Hypnotherapy | Cranial osteopathy | Counselling
Gait analysis | Shoulder treatments | CBT
Sports injury therapy | Injury rehab
Rhythmic movement therapy

**Book online
with our simple
system, or call us on
01933 328020.**

www.ashgrovehealth.co.uk
BOOK ONLINE

Regent Wrought Iron Ltd

The Regent Street Wrought Iron Works

180-186 Regent Street, Kettering, Northants NN16 8QH

PHONE 01536 485892

High quality gates and fencing hand made on the premises since 1963



Single gates from £60.00
Side entry from £99.00
Double gates from £120.00



We have 18 styles to choose from. All on show in our showroom. Full fitting & painting service.

Automatic Estate Gates

- Highest quality equipment
- Up to 14' opening
- Flat draped or bow topped
- Fully installed & painted
- **FREE** first year service
- Guaranteed for 2 years
- Full back up & yearly service
- We have been installing automation since 1998
- Full pressure tested and certified to BS 12453

We can automate your existing gates (if suitable) or upgrade old equipment to meet BS 12453 safety regulations



Has your garden wall/fence had it? Replace it with wrought iron!

LASTS A LIFETIME • USUALLY FITTED IN A DAY

BEAT THE BURGLAR – Free security locking bolts fitted to all our side entry gates or full range of mortise locks fitted

Visit our website for our online catalogue www.regentiron.co.uk

NORTH NORTHANTS SMALL GRANTS CAN HELP TRANSFORM COMMUNITIES

Details on how North Northamptonshire Council will provide small grants to community groups was discussed at a meeting of the authority's executive recently.

The Community Funding Policy will provide a consistent approach to the distribution of funding up to £25,000 across the North Northants area.

The Policy will also allow external organisations to help in the delivery of the council's strategic objectives and priorities.

Previously, these small grants were managed by the former boroughs and district councils in North Northants and were awarded in areas such as sport, health, reducing poverty and environmental improvements.

Cllr Andy Mercer, the council's Executive Member for Housing and Communities, said: "Community groups make a massive difference in the areas in which they are located and are essential for community cohesion.

"We are extremely grateful for all of the work they do and are committed to providing the appropriate funding, where we can, to ensure they can continue to carry out their good work.

"Having a unified policy for the distribution of grants is important for fairness and to make sure it is done in a

targeted way."

Cllr Jason Smithers, Leader of the council said: "As a council we are committed to building strong sustainable communities and this policy is a vital building block in making sure that becomes a reality in North Northants."

For the remainder of this financial year, existing budgets from the former borough and district authorities will be used to issue grants up to £5,000 from a total pot of £195,000.

After this transition year – in financial year 2022/2023 – the budgets will be consolidated.

PUPILS ELIGIBLE FOR FREE SCHOOL MEALS TO GET SUPPORT DURING OCTOBER HALF-TERM AND CHRISTMAS

North Northamptonshire pupils who are eligible for benefits related Free School Meals will receive support during the October half-term and Christmas holidays.

North Northamptonshire Council will provide shopping vouchers for families with children who are eligible for benefits related Free School Meals with vouchers being distributed to the families by their schools.

Cllr Jason Smithers, Leader of the council, said: "While thankfully we're moving in a more positive direction with

regards to the pandemic, we are not out the woods yet. So I'm delighted that we can provide this additional support for the families and pupils who are in most need of our help.

"I hope this reassures our residents in North Northamptonshire that we will always help when and where we can."

Cllr Scott Edwards, the

council's Executive Member for Children, Families, Education and Skills, said: "This scheme has already made a big difference for many pupils and I'm pleased that we are able to keep offering this support.

"Christmas can be an expensive time for families and I'm proud that North Northamptonshire Council can provide a helping hand."



Christmas Gifts for Patients

Donate a gift for a patient in hospital on Christmas Day

Visit our website to purchase a gift from our **Amazon Wishlist** or make a **monetary donation** and we will purchase a gift for you.

www.northamptonshirehealthcharity.co.uk

greenheart@nhcf.co.uk

We can only accept new items in their original packaging. Unwrapped gifts only please.



NORTHAMPTONSHIRE

Health Charity

Supporting local NHS hospitals & community services

01604 626927

01536 491569



OCTOBER 2021

Tue 26 Dinosaur Adventure Park
Thu 28 Black Country Museum or Dudley Zoo
Fri 29 London Museums or Free Time
Fri 29 London Transport Museum

NOVEMBER 2021

Sat 6 Silverstone Experience
Sun 14 Nottingham Christmas Market
Wed 17 Pretty Woman the musical
Fri 19 Chatsworth at Christmas
Sat 20 Birmingham Christmas Market
Sat 20 Harrogate Christmas Market
Sun 21 Festive Gift Fair
Sun 21 Blenheim Palace Christmas Market
Wed 24 Cheltenham Christmas Market
Thu 25 Tina Turner the musical
Fri 26 Thursford
Sat 27 Bath Christmas Market
Sat 27 Cadbury World at Christmas
Sun 28 Bury St Edmunds
Mon 29 Thursford

DECEMBER 2021

Wed 1 Thursford
Fri 3 Worcester Christmas Market
Sat 4 Melton Mowbray Victorian Christmas
Sun 5 Windsor or Windsor Castle
Thu 9 Christmas Lunch River Cruise
Fri 10 Stratford Upon Avon Victorian Christmas
Sat 11 Nottingham Christmas Market
Sat 11 Oxford Christmas Market
Sun 12 Hyde Park Winter Wonderland
Wed 15 Thursford

JANUARY 2022

Sat 8 Boundary Mills Grantham
Wed 19 Seasonal Mystery Trip
Thu 27 Royal Courts of Justice

FEBRUARY 2022

Sat 5 Warwick & Leamington Spa
Tue 8 Batsford Arboretum Snowdrops
Wed 9 St Albans Market Day
Thu 17 London Museums or Free Time
Fri 18 Aylesbury Market Day
Tue 22 Melton Mowbray
Wed 23 Seasonal Mystery Trip
Thu 24 Ely
Sun 27 Orchids at Kew Gardens

MARCH 2022

Thu 3 Cotswold Tour - New route
Tue 8 Springfield or Spalding
Thu 10 Seasonal Mystery Trip
Sat 12 National Railway Museum or York
Sat 12 Jorvik Viking Centre, York
Tue 15 Derbyshire & Peak District

Check out our website for further days out
www.rbtravel.co.uk



NOVEMBER

29th-3rd Dec - A TASTE OF CHRISTMAS

Clifton Park Hotel, St Annes on Sea, 4 nights full board, inc excursions £459pp. St Annes on Sea gives the gentle feel of a bygone age. Blackpool promenade and Tower is minutes away, with lots to offer people of all ages.

DECEMBER

23rd-27th - CHRISTMAS IN WARWICKSHIRE

Walton Hall Hotel & Spa, 4 nights half board, inc excursions £579pp

30th-2nd Jan - NEW YEAR IN BOURNEMOUTH

Trouville Hotel, 3 nights half board. inc excursions £449pp

JANUARY

24th-28th - WINTER MYSTERY

5 days with included excursions & half board £419pp

FEBRUARY

7th-11th - TASTE OF CORNWALL

Fistral Beach Hotel, Newquay, Included excursions & half board £409pp

APRIL

1st-5th - VICTORIAN STEAM BREAK

At Winnock Hotel Dryman. All inclusive includes excursions £499pp

2022 holidays are now available to book please call us for a full list of our trips.

CALL NOW ON
01933 359313
TO GET OUR FREE BROCHURE!
taurus@rbtravel.co.uk
www.taurusholidays.co.uk

Nene Valley News **events**



Re opening
Friday 17th September 2021
EVERYONE WELCOME
 Fridays 9:00am to 11:15am

We offer a safe and friendly place for you and your children under 5 to play and make friends.

£1.00 per family Snacks and refreshments included
 Whitefriars Church, The Bridge, Boughton Drive, Rushden NN10 9HX
 at the top of Whitefriars Primary School carpark

For more information contact Em Croxon via emma@whitefriarschurch.org.uk or 07957080074

Whitefriars Church, Rushden, is delighted to say that it is able to start its Retireds' Group meetings again. We will be meeting as before, on the 1st Friday of each month from 1.30 to 3.30pm in The Bridge, in the car park of Whitefriars Primary School, Boughton Drive, Rushden NN10 9HX. We are very much aware that Covid hasn't gone away and would like to assure you that your safety is our priority, so we are complying with government guidelines. Everywhere will be thoroughly cleaned before you arrive. Chairs will be set up with at least one metre between them. Hand sanitiser will be provided and we ask that you wear a face covering unless exempt. Refreshments will be served, but please bring your own mug/cup and take it home to wash up. Cakes will be provided, individually wrapped, but no homemade ones yet. We are looking forward to meeting up with old friends and making new ones, so everyone will be assured of a friendly welcome. For more information, please ring Celia Underwood on 07929 567268.

Get OWT (out with toddlers) Hall Park, Rushden near the play area. Every Friday 9.30am to 10.30am: no booking needed, parents/carers and toddlers are welcome to just come along and collect an activity pack. Details from Emma Croxon at emma@whitefriarschurch.org.uk or 07957 080074. Organised by Whitefriars Church, Rushden, and open to all.

Sundays 17th, 24th and 31st October, 10.15am: Morning Worship at Whitefriars Primary School, Boughton Drive, Rushden NN10 9HX. No need to book. More details from office@whitefriarschurch.org.uk

Sunday 17th October, 9.40am
 Higham Ferrers Footpath Group
 Saffron Road car park Higham Ferrers for car sharing. 6 mile walk from Ringstead. Admission Fee: Free, Contact information: 07552 993777.

RSPB Mid-Nene Local Group
 The next indoor meeting will be on Thursday

21st October at 7.30pm at Saxon Hall in Raunds. There will be an illustrated talk on Reclaiming South Georgia by Tony Martin. Meeting is open to everyone, admission £3. Children free. More details are available from Penny 01933 350404.

Sunday 31st October, 10am
 Event: Higham Ferrers Footpath Group
 Saffron Road car park, Higham Ferrers. 12 mile walk from Higham Ferrers, bring packed lunch. Admission Fee: Free. Contact information: 01933 386839.

Saturday 6th November, 10am-3pm
 Seasonal Craft Fayre
 Irthlingborough Library
 Local crafts and artisans, refreshments, children's craft bags.

Sunday 7th November, 9.30am
 Higham Ferrers Footpath Group
 Saffron Road car park Higham Ferrers for car sharing. 5.5 mile walk from Harrold Country Park. Admission Fee: Free. Contact information: 07462 422097.

Fairtrade/Eco Market returns to Oundle...
 Plans are afoot for the return of Oundle's popular Fairtrade/Eco Market, to be held in St Peter's Parish Church on Saturday 13th November, from 9am-2pm. There will be stalls selling a wide variety of goods, from bamboo socks to hand-crafted products and Fairtrade foods, as well as the opportunity to find out about local green initiatives. Fairtrade refreshments will be on sale too. Come and do some ethical Christmas shopping in beautiful surroundings!

Friday 19th November, 7.30pm
 Rushden & District History Society
 Whitefriars Primary School, Boughton Drive, Rushden NN10 9HX. Admission Fee: Members £1.50, non-members £2.50. Terry Whenham - Commonwealth War Graves Commission. Contact information: Tel 01933 358218 for more information.

To submit your event please contact us via our website www.nenevalleynews.co.uk or call 01522 692542. Please supply in the following format: Date, event, place, time, admission fee (if applicable), contact information, 15 word description.

NMVC concert **hailed as a triumph**

On Saturday 25th September Northampton Male Voice Choir (NMVC) together with the world famous GUS Band and fabulous soprano soloist Emily Haig thoroughly entertained an enthusiastic, near capacity audience at Northampton's Spinney Theatre with a 'Last Night of the Proms' concert conducted and MC'd in his inimitable flamboyant style by NMVC Musical Director, Stephen Bell.

The choir performed a selection from the 15 new songs they had learned during the Covid lockdown, including 'Irving', an original work by Alan Simmons, one of the most highly regarded choral leaders and composers in the UK. Now living in France and unable to attend the concert, Alan has since contacted NMVC to say that, having listened to the live recording of the choir's performance of 'Irving', "considering recording a live performance with a live audience is not the easiest thing to do, I think it's a triumph. Well done!"

After the concert, NMVC Chairman, Mark York, said: "I know that I speak for all involved in NMVC when I say that finally getting out and performing in such a wonderful endeavour has lifted everyone's spirits!"

Dave Elliot-Smith, Chairman of the GUS Band said: "The band were still buzzing the day after. We loved it!"

The concert was held in support of Prostate Cancer UK. Five magnificent men, who had signed up to join the choir in raising money for the charity and, in doing so, learn to sing, took to the stage to perform alongside NMVC, which tirelessly raises money for great causes.

After the concert a 'bucket collection' on the door raised an amazing amount in excess of £700. This, together with other fundraising efforts, including MD Stephen running in this year's London Marathon, means the charity is likely to receive over £6,000 this year from the choir's efforts.

NMVC was also delighted to be presented during the concert with a cheque for £5,000 from its generous sponsors, Hollowells Funeral Directors.

NMVC website: www.nmvc.co.uk
NMVC YouTube Channel:
www.youtube.com/channel/UCWCKnjss8p1LrO1NonSf0KQ
Follow NMVC on Facebook, Twitter and Instagram

The festive season starts with the **Sleeping Beauty Panto Launch**

It's never too early for panto... Oh no it certainly wasn't when the stars of Castle Theatre's 2021 pantomime Sleeping Beauty launched the festive season early at the Tithe Barn.

Joined by invited guests, they gave a sneak peek at the magic to come in the Wellingborough venue's pantomime, which runs from 4th December until Sunday 2nd January 2022.

Attending the launch were Alice Ellen Wright, who will play Princess Aurora; Mark Lamb, who will take on the role of Prince Charming; Ria Turner and Stuart Ash, who will be this year's evil Queen Carabosse and sidekick Herman; Sarah Hooper, who will bring the magic as Fairy Marge; and Adam Borzone, who will be playing Nurse Nelly, this year's hilarious Dame. Will Frazer, who will be leading the laughter in the comedic role of Jingles, was unable to attend.



Hosted at the beautiful Tithe Barn in Wellingborough, guests were introduced to the cast before having the opportunity for photos and festive fun! Guests were also treated to delicious refreshments served by Puds 'n' Guds.

Castle Theatre would like to thank their Panto Launch partners North Northants Council, Wellingborough Norse and Puds 'n' Guds for helping to create a perfect event.

Get ready to experience the pantomime of your dreams! Tickets for Sleeping Beauty range from £10-£24; book your tickets by calling the Box Office on 01933 270 007 or online at www.castletheatre.co.uk.

YARWELL & NASSINGTON **BRITANNIA BAND NOTICE**

NEW DATE: Friday 19th November at 7.45pm.
"We have had a number of confirmed outbreaks of Covid within the band so, at such short notice, we felt it was not responsible or practical to go ahead with the concert on 15th October.

"However, we are determined not to disappoint too much and to waste all the hard work that has gone into preparing for the concert. We are therefore looking to reschedule the date to Friday 19th November at 7.45pm.

"We know as keen band followers you will already have bought your tickets. No worries. Your tickets will be valid for the new date. However if you are no longer able to attend please return your tickets to where you bought them and they will be refunded.

"We do hope you will still be able to join us on the new date. With an extra few weeks' practice, it will be even better!

"We are in difficult and changing times but as they say, 'the band will play on'.

THEATRE IS BACK!

AUTUMN 2021 HIGHLIGHTS

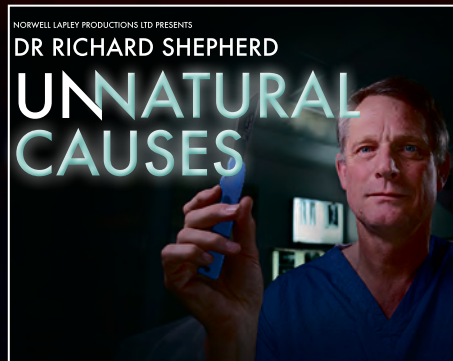
For full listings, visit castletheatre.co.uk

CASTLE THEATRE

Wellingborough



Thu 21 Oct, 7.30pm



Fri 22 Oct, 7.30pm



Sat 23 Oct, 7.30pm



Sun 24 Oct, 7.30pm



Fri 29 - Sun 31 Oct



Sat 30 Oct



Fri 5 Nov, 7.30pm



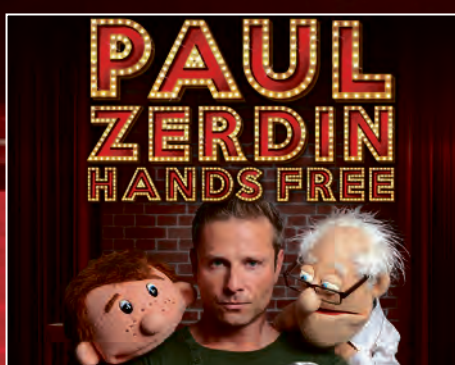
Sat 6 Nov, 7.30pm



Sun 7 Nov, 2.30pm



Thu 18 Nov, 7.30pm



Sat 20 Nov, 7.30pm



Sat 27 Nov, 7.30pm



Box Office 01933 270 007

www.castletheatre.co.uk

Su Pollard stars in Harpy at Castle Theatre

National treasure Su Pollard (Hi-de-Hi, You Rang, M'Lord?) gives a one-woman tour-de-force performance this autumn in *Harpy*. This razor-sharp and bittersweet dark drama from Fringe First award winner Philip Meeks (Kiss Me Honey, Honey!, Murder, Margaret and Me) will be performed live at Castle Theatre, Wellingborough on Wednesday 20th October 7.30pm.

Birdie's a hoarder. The neighbours call her a harridan and a harpy, although most have never even met her. They see her hoard as a hazard for house prices. But it isn't rubbish. It's her life's work and it exists because years ago something deeply cherished was stolen from her; Birdie's not been able to give up anything since.

She'll do anything to get this priceless thing back. Anything at all.

Harpy – Interview with Su Pollard

How would you describe the show to someone who hasn't seen it?

Harpy tells a funny and tragic

story about one woman's lifelong battle to find a treasured possession she once lost. It makes you think about the idea of mental health and how it's dealt with.

Birdie has mental health issues, but she also has a different way of looking at things that's wiser than many of the characters she encounters. The play makes you wonder if some people are diagnosed as suffering from certain conditions just because they don't quite fit in with society's expectations of normal behaviour.

What was it that initially drew you to the play?

Firstly, the big attraction was having a play written for me. That has never happened, so I was mega excited! Secondly, when I read the script I was immediately struck by how real, sincere, poignant and funny it was. A piece well worth doing.

You previously created the role as your Edinburgh Fringe debut in 2018 and were meant to tour in 2020. What excites you most about returning to this character

and has your relationship with her changed?

I was very gratified to play Birdie, so I am thrilled to be revisiting her. The author, Philip Meeks, has added more to the piece since Edinburgh, enabling her to show more sides of her character and have more layers, bringing out more of her quirks.

How does it feel to be back on stage after all we've gone through over the last year?

It's absolutely wonderful to be getting back on stage and creating entertainment after all this time! I can't wait to see people in a theatre again and engage with an audience. There's such a buzz from live theatre, and it has been greatly missed.

While you've not been able to perform during the pandemic, what's been keeping you busy?

As I'm quite a sociable person I have to admit the lockdown hit me hard. I remember after we had to stop doing Harpy

we travelled back into London which was like a ghost town. It felt like the end of the world.

For the first week or so I had a clear out at home. Then I was considering having another clear out. I could have been left with an empty house, but Philip Meeks sent me a load of books. I've not had much time for reading in the past, but I became obsessed. I started reading for hours and hours a day!

In the second lockdown of course, I was rehearsing for MasterChef. I must have cooked each dish I did about 20 times. I'd taken portions round to my neighbours and they'd tell me if I'd improved. I think they were glad I didn't make it to the finals, or they might have had to move.

Do you think modern discussions of mental health are inclusive of an older generation, or do we focus too much on the millennials?

Mental health is now thankfully on the agenda and people are able to talk openly about it. But

only a few decades ago it was still a taboo subject. People were told to pull their bootstraps up and get on with things.

There must be thousands of older people who've lived their lives with illnesses like chronic depression but have never been able to say how they feel, and I think their voices and experiences are unheard.

It's also an issue that someone like Birdie, who had an extreme and more obvious mental illness, will have been through so many shifts in medication over the last few years. Mental health drugs

are developing at a high rate. In the play she's stopped taking her pills and I can't say I blame her.

What are you most looking forward to while on tour?

After the last 18 months I am really looking forward to travelling across the country, revisiting theatres I have played before and playing new venues. It is always exciting to enter a new stage door.

I am hoping, too, to catch up with mates because some don't live in London, so it is great to have a drink and a catch up.



Tickets for this evening of drama cost £17 and can be purchased by calling the Box Office on 01933 270 007 or online at www.castletheatre.co.uk. Harpy is suitable for ages 12 and over.

OPEN EVENT

Higham Ferrers Campus

Saturday 13 November 2021,
8.30am – 12noon



Discover your perfect career route



Take a tour of our excellent facilities



Meet our tutors



Find out about our transport service

Interested in Business, Equine Studies, Food & Nutrition, Land-based Studies, Sport & Uniformed Public Services, Supported Learning?

Visit our Moulton Campus Open Event also taking place at the same time!

Moulton
COLLEGE

HIGHAM FERRERS CAMPUS
Chelveston Road, Higham Ferrers,
Northamptonshire NN10 8HN

MOULTON CAMPUS
Gate 3, Moulton College,
Pitsford Road, Moulton,
Northampton, NN3 7SX



Pre-register at moulton.ac.uk

ANIMAL
BRICKLAYING
CARPENTRY
PLUMBING



Nene Valley news CLASSIFIEDS

ACCOUNTANCY

Jon Essam & Co Ltd

Chartered Accountants

- Free initial consultation, business advice and quotation
- Tax return, Landlord, Sole Trader, Partnerships and Limited Company clients supported
- Bookkeeping, VAT/MTD submissions
- Payroll bureau, CIS processing and Auto-enrolment services
- All accountancy software brands supported

Email to arrange a free consultation with a chartered accountant: info@essamca.co.uk
Tel: 01832 730280

New website: www.essamca.co.uk
Follow us for updates:
www.facebook.com/jon.essam.accountant

23 Cottingham Way, Thrapston, Kettering,
Northants, NN14 4PL

HOME IMPROVEMENTS

Simon Vale

Painter & Decorator

High quality • Competitive prices
Free estimates

07568 587367 or 01933 228671

!!!GET PLASTERED!!!

30 years experience **For all your plastering needs.**
No job too small, no fuss, no nonsense!
Reliable and trustworthy service
at the best possible price.
Call Steve for free, friendly
advice or a free quote.
07703 720138 • 01933 430051

HOME SERVICES

DC Heating
SAFE IN OUR HANDS

THE LOCAL PROFESSIONAL
HEATING ENGINEERS
YOU CAN TRUST

REPAIRS • SERVICING
INSTALLATIONS

WARM AIR INSTALLATION, SERVICING & REPAIR

Phone today for a free quotation on
T: 01933 392719 • M: 07909 232107
www.dcheatingengineers.co.uk
MC Heating Services Ltd Trading as DC Heating

PGR
Plumbing & Heating
Tel: 01933 698116
24 Hr Emergency Service
Email: pgrplumbing@btinternet.com
Web: www.pgrplumbing.co.uk

Specialists in
Gas Installations

Gas Servicing & Maintenance
Landlords Gas Safety Certificates

Central Heating Powerflushing
Household Plumbing & Drainage

A. Seaton
Electrical Ltd.

Domestic and Commercial work
ELECSA Part P Approved Contractor

- Rewires
- Garden electrics
- Fault finding
- Testing and inspection
- Landlords reports
- Fuse board / Consumer unit changes
- Extra sockets and lighting
- Smoke alarms

m: 07952 249885 t: 01234 708115 e: seatonsparky@gmail.com

Plumber — local & fast!

RGJ PLUMBING AND HEATING

Plumbing

- Full bathroom installation (inc carpentry & tiling)
- Burst pipes & leaks
- Toilet repair/replace
- Taps, sinks repair/replace
- Showers repair/replace & pumps

Heating

- Full central heating installation
- Boiler servicing/breakdowns
- Landlord safety certificates
- Power flushing
- Radiators & valves
- Pumps & cylinders



No call-out charge!
City & Guilds Qualified
All work guaranteed



rgjplumbing@outlook.com
01933 588005 or 07921 469471

PET SERVICES

Country Companions Pet Services

Services include:

- Doggy Day Care
- Dog Walking
- Puppy Visits
- Pet Sitting
- Cat Visits
- Home Boarding

Contact Sarah on:
07766 523292
www.ccpetservices.co.uk
sarah@ccpetservices.co.uk

PUBLIC NOTICES

BEDFORD BOROUGH COUNCIL

PUBLIC NOTICE

BEDFORD BOROUGH COUNCIL PROPOSE TO REDUCE THE SPEED LIMIT ON WYMLINGTON LANE, RUSHDEN/ WYMLINGTON

Reasons for Proposal:
Bedford Borough Council propose to reduce the speed limit from the National Speed Limit to 40mph on Wymington Lane, Rushden/Wymington. The volume of HGV traffic using this road has increased over the years to such a degree that it is now felt that a 40mph limit is more appropriate in this location in order to help ensure a safer road network for all highway users.

Please note that although part of the road is in Northamptonshire, this proposal is made with West Northamptonshire Council's agreement.

Effect of the Order:
1. To reduce the speed limit from the National Speed Limit to 40mph on the following lengths of road:

A	Wymington Lane, Rushden
(i)	From a point approximately 150 metres west of the A6 Rushden Road to Wymington Lane, Wymington.

B	Wymington Lane, Wymington
(i)	From Wymington Lane, Rushden to a point approximately 358 metres east of the centre of Church Lane, Wymington.

A copy of this Notice, a draft Order, a plan, and a statement of reasons for proposing to make the Order may be examined during normal office hours at Borough Hall, Cauldwell Street, Bedford, MK42 9AP, and will be placed on deposit until 6 weeks after the Order is made or until it is decided not to continue with the proposal. These documents can also be viewed on our website at www.bedford.gov.uk/proposedtro. For further information please contact Jason Holdsworth at Bedford Borough Council on 01234 276691.

Comments supporting or objecting to the proposal should be put in writing, stating the grounds on which they are made, and emailed to the council via highway.consultations@bedford.gov.uk, or posted to Highway Consultations, Bedford Borough Council, Room 436, Borough Hall, Cauldwell Street, Bedford, MK42 9AP, to reach us no later than 7th November 2021.

Order Title if made will be:

1. Bedford Borough Council (40mph Speed Limit) (Wymington Lane, Rushden/Wymington) Order 20**

Dated 16th October 2021

Craig Austin, Director of Environment, Borough Hall,
Cauldwell Street, Bedford, MK42 9AP

NORTH NORTHAMPTONSHIRE COUNCIL

ROAD TRAFFIC REGULATION ACT 1984 - SECTION 14

NORTH NORTHAMPTONSHIRE COUNCIL (HIGH STREET, COLLYWESTON)

(TEMPORARY PROHIBITION OF THROUGH TRAFFIC) ORDER 2021

NOTICE IS HEREBY GIVEN that North Northamptonshire Council have made an Order the effect of which is to prohibit traffic from proceeding along that length of High Street, Collyweston as set out below.

LENGTH OF ROAD TO WHICH RESTRICTION APPLIES: That length of High Street, Collyweston from New Road to outside number 30 High Street.

REASON FOR RESTRICTION: The restriction is required for safety during installation of new gas connection.

PERIOD OF CLOSURE: The proposed Order will come into effect on 25th October 2021 and will continue in force for a period of eighteen months. An application may be made for the approval of the Secretary of State for Transport for the Order to be extended if this proves necessary. However, the restriction specified will have effect only at such times and to such an extent as is indicated by the display of signs prescribed by the Traffic Signs Regulations and General Directions 2016.

EXPECTED DURATION: It is expected that the road will be restricted until 29th October 2021.

ALTERNATIVE ROUTES: use New Road, Back Lane and A43.

Dated this 16th day of October 2021
DEBBIE CARTER-HUGHES
Executive Director LGSS Law Ltd
PKG/T21/333

If you require any further information please contact Gary Thorp ref:- 21/22 – N199 on 01604 651072.

NORTH NORTHAMPTONSHIRE COUNCIL

ROAD TRAFFIC REGULATION ACT 1984 - SECTION 14

NORTH NORTHAMPTONSHIRE COUNCIL (SCHOOL LANE, HIGHAM FERRERS)

(TEMPORARY PROHIBITION OF THROUGH TRAFFIC) ORDER 2021

NOTICE IS HEREBY GIVEN that North Northamptonshire Council have made an Order the effect of which is to prohibit traffic from proceeding along that length of School Lane, Higham Ferrers as set out below.

LENGTH OF ROAD TO WHICH RESTRICTION APPLIES: That length of School Lane, Higham Ferrers from the junction of School Lane to Patenhall Way.

REASON FOR RESTRICTION: The restriction is required for safety during use of a crane.

PERIOD OF CLOSURE: The proposed Order will come into effect on 27th October 2021 and will continue in force for a period of eighteen months. An application may be made for the approval of the Secretary of State for Transport for the Order to be extended if this proves necessary. However, the restriction specified will have effect only at such times and to such an extent as is indicated by the display of signs prescribed by the Traffic Signs Regulations and General Directions 2016.

EXPECTED DURATION: It is expected that the road will be restricted for four days.

ALTERNATIVE ROUTES: use Patenhall Way and School Lane.

Dated this 16th day of October 2021
DEBBIE CARTER-HUGHES
Executive Director LGSS Law Ltd
PKG/T21/377

If you require any further information please contact Gary Thorp ref:- 21/22 – N257 on 01604 651072.

NORTH NORTHAMPTONSHIRE COUNCIL

ROAD TRAFFIC REGULATION ACT 1984 - SECTION 14

NORTH NORTHAMPTONSHIRE COUNCIL (BURY CLOSE, HIGHAM FERRERS)

(TEMPORARY FOOTPATH CLOSURE) ORDER 2021

NOTICE IS HEREBY GIVEN that North Northamptonshire Council have made an Order the effect of which is to prohibit pedestrians from proceeding along that length of Bury Close, Higham Ferrers as set out below.

LENGTH OF FOOTPATH TO WHICH RESTRICTION APPLIES: That length of Bury Close, Higham Ferrers from Kimbolton Road southbound to junction with Bury Close.

REASON FOR RESTRICTION: The restriction is required for safety during installation of new chamber and ducting.

PERIOD OF CLOSURE: The proposed Order will come into effect on 30th October 2021 and will continue in force for a period of six months. An application may be made for the approval of the Secretary of State for Transport for the Order to be extended if this proves necessary. However, the restriction specified will have effect only at such times and to such an extent as is indicated by the display of signs prescribed by the Traffic Signs Regulations and General Directions 2016.

EXPECTED DURATION: It is expected that the footpath will be restricted until 5th November 2021.

ALTERNATIVE ROUTES: use Kimbolton Road and Bury Close.

Dated this 16th day of October 2021
DEBBIE CARTER-HUGHES
Executive Director LGSS Law Ltd
PKG/T21/386

If you require any further information please contact Gary Thorp ref:- 21/22 – N274 on 01604 651072.

NORTH NORTHAMPTONSHIRE COUNCIL

ROAD TRAFFIC REGULATION ACT 1984 - SECTION 14

NORTH NORTHAMPTONSHIRE COUNCIL (A6 STATION ROAD & STATION ROAD, IRLINGBOROUGH & HIGHAM FERRERS)

(TEMPORARY PROHIBITION OF MOTOR VEHICLES, TEMPORARY NO RIGHT TURN & TEMPORARY NO LEFT TURN) ORDER 2021

NOTICE IS HEREBY GIVEN that North Northamptonshire Council have made an Order the effect of which is to prohibit traffic from proceeding along, turning right and turning left along those lengths of A6 Station Road and Station Road, Irthlingborough and Higham Ferrers as specified in the Schedule below.

REASON FOR RESTRICTION: The restriction is required for safety during Chowns Mill roundabout major scheme.

PERIOD OF CLOSURE: The proposed Order will come into effect on 20th October 2021 and will continue in force for a period of eighteen months. An application may be made for the approval of the Secretary of State for Transport for the Order to be extended if this proves necessary. However, the restriction specified will have effect only at such times and to such an extent as is indicated by the display of signs prescribed by the Traffic Signs Regulations and General Directions 2016.

EXPECTED DURATION: It is expected that the roads will be restricted until 31st December 2021.

ALTERNATIVE ROUTES: use next roundabout to change direction.

Dated this 16th day of October 2021
DEBBIE CARTER-HUGHES
Executive Director LGSS Law Ltd
PKG/T21/371

If you require any further information please contact Gary Thorp ref:- 19/20 – N546 on 01604 651072.

SCHEDULE

Temporary Prohibition of Motor Vehicles

Road Name	Termination Points
Station Road, Irthlingborough/Higham Ferrers	50m north of bridge structure extending 200m southwards

Temporary Prohibition of Left Turn

Road Name	Termination Points
A6 Station Road, Higham Ferrers	Onto Station Road
Station Road, Irthlingborough	Onto A6

Temporary Prohibition of Right Turn

Road Name	Termination Points
A6 Station Road, Irthlingborough	Onto Station Road
Station Road, Higham Ferrers	Onto A6

NORTH NORTHAMPTONSHIRE COUNCIL

ROAD TRAFFIC REGULATION ACT 1984 - SECTION 14

NORTH NORTHAMPTONSHIRE COUNCIL (PUBLIC FOOTPATH VC3 (PART) – HIGHAM FERRERS)

(TEMPORARY CLOSURE) ORDER 2021

NOTICE IS HEREBY GIVEN that North Northamptonshire Council have made an Order the effect of which is to prohibit pedestrians from proceeding along that length of Public Footpath VC3 (Part) in Higham Ferrers as specified below. Private access to land or premises adjacent to the said length of footpath are unaffected.

RIGHT OF WAY TO WHICH RESTRICTION APPLIES: The route commences at point A at the start of Public Footpath VC3 off Kimbolton Road at NGR SP9641 6882. It then proceeds west of south for 258 metres to point B at the junction with Bury Close at NGR SP9633 6857.

The route to be closed is shown by a solid black line between points A – B.

REASONS FOR RESTRICTION: The restriction is required to build new changers and lay duct in the footway.

PERIOD OF CLOSURE: The Order will come into effect on 25th October 2021 and will continue in force for a period of six months. An application may be made for the approval of the Secretary of State for Transport for this Order to be extended if this proves necessary. However, the restriction specified will have effect only at such times and to such extent as is indicated by the display of notices.

ALTERNATIVE ROUTE: The alternative route starts at point A at NGR SP9641 6882. The route travels west along the footway of Kimbolton Road for 59 metres to point C at NGR SP9635 6882. The route then proceeds west of south along the footway of Bury Close for 223 metres to point D at NGR SP9627 6862. The route then continues along the footway travelling generally south east for 75 metres to terminate at point B at NGR SP9633 6857 at the junction with Public Footpath VC3. The alternative route is shown by a broken black line between points A-C-D-B.

Dated this 16th day of October 2021

DEBBIE CARTER-HUGHES
Executive Director LGSS Law Ltd
PKG/ROW/018

If you require any further information please contact Martin Rodgers on 07484034252.

Classifieds continued on page 12

KM
KM Media & Marketing

To advertise in
Nene Valley News call
01522 692542

Classifieds continued from page 11

PUBLIC NOTICES

**NORTH NORTHAMPTONSHIRE COUNCIL
ROAD TRAFFIC REGULATION ACT 1984 -
SECTION 14****NORTH NORTHAMPTONSHIRE COUNCIL
(PUBLIC BYWAY NM32 - NASSINGTON)****(TEMPORARY CLOSURE) ORDER 2021**

NOTICE IS HEREBY GIVEN that North Northamptonshire Council have made an Order the effect of which is to prohibit pedestrians, equestrians, cyclists and all motorised vehicles from proceeding along that length of Public Byway NM32 in Nassington as specified below. Private access to land or premises adjacent to the said length of byway are unaffected.

RIGHT OF WAY TO WHICH RESTRICTION APPLIES: The existing route to be closed begins at National Grid Reference [NGR] TL 0508 9669 (Order Plan Point A) at its junction with Apethorpe Road and extends in a generally northerly direction for 650 metres to NGR TL 0529 9730 (Order Plan Point B) where it joins unaffected BOAT PG14 Yarwell. The route is shown by a solid black line between points A and B.

REASONS FOR RESTRICTION: The restriction is required to allow reinstatement works to be carried out on the byway and to allow the works to bed in following completion of works.

PERIOD OF CLOSURE: The Order will come into effect on 22nd October 2021 and will continue in force for a period of six months. An application may be made for the approval of the Secretary of State for Transport for this Order to be extended if this proves necessary. However, the restriction specified will have effect only at such times and to such extent as is indicated by the display of notices.

ALTERNATIVE ROUTE: There is no alternative route.

Dated this 16th day of October 2021

DEBBIE CARTER-HUGHES
Executive Director LGSS Law Ltd
PKG/ROW/022

If you require any further information please contact Sarah Cureton on 01604 883400.

**NORTH NORTHAMPTONSHIRE COUNCIL
ROAD TRAFFIC REGULATION ACT 1984 -
SECTION 14****NORTH NORTHAMPTONSHIRE COUNCIL
(PUBLIC FOOTPATH MF12 (PART) - BARNWELL)****(TEMPORARY CLOSURE) ORDER 2021**

NOTICE IS HEREBY GIVEN that North Northamptonshire Council have made an Order the effect of which is to prohibit pedestrians from proceeding along that length of Public Footpath MF12 (Part) in Barnwell as specified below. Private access to land or premises adjacent to the said length of footpath are unaffected.

RIGHT OF WAY TO WHICH RESTRICTION APPLIES: The existing route of MF12 (Part) to be closed begins at National Grid Reference ('NGR') TL0419 8738. The route travels generally south east then south west for approximately 25 metres to point B at NGR TL0418 8736. The route is shown by a solid black line between points A - B.

REASONS FOR RESTRICTION: The restriction is required for essential maintenance works.

PERIOD OF CLOSURE: The Order will come into effect on 1st November 2021 and will continue in force for a period of six months. An application may be made for the approval of the Secretary of State for Transport for this Order to be extended if this proves necessary. However, the restriction specified will have effect only at such times and to such extent as is indicated by the display of notices.

ALTERNATIVE ROUTE: The alternative route starts at point A at NGR TL0419 8738. The route travels south west for approximately 18 metres to point C at NGR TL0417 8737. The route then heads south east for approximately 11 metres to point B at NGR TL0418 8736.

Dated this 16th day of October 2021

DEBBIE CARTER-HUGHES
Executive Director LGSS Law Ltd
PKG/ROW/014

If you require any further information please contact Ben Fabian on 07943 054557.



Deadlines for all classifications: 5pm Monday prior to issue date. A complete version of our Terms and Conditions can be found online at www.nenevalleynews.co.uk. Pay by credit/debit card or cheque. All major credit/debit cards accepted. For help and information please call 01522 692542 or visit www.nenevalleynews.co.uk

**ARE YOU
A FEW FEET
FROM GOLD?**

**Selling part of your garden
for development, could be
your best move ever.**

J MAD
PLANNING & DEVELOPMENT

Do you have the space in your garden to build a house? If yes, then all you need is planning consent and you can sell the plot and pocket the equity it would generate - Tax Free!

How do you go about it? This is where I can help you.

My name is Jenny McIntee from J MAD Planning & Development. With over 30 years experience in architectural design and planning we have successfully gained planning consent for hundreds of clients.

For the right development opportunity we can work together on a **"no win no fee"** basis where you pay little or nothing upfront, meaning there is no cost to you unless and until we secure planning consent.

Call me on **07921 003 153**
or email jennym@jmadarch.co.uk



**INTER COUNTY
Waste Management**

RESIDENTIAL & COMMERCIAL WASTE COLLECTION

Call us today!
01933 315872

Brindley Close, Rushden,
Northamptonshire NN10 6EN

For more information visit:
www.intercountyltd.co.uk

SINGLE BULKY ITEMS OR FULL HOUSE CLEARANCES

If you have any cardboard, paper, furniture, electrical waste, pallets, garden waste etc please give us a call for a very competitive price!

We can normally clear the waste in 72 hours from the point of order, but we also provide an emergency service, so please give us a call should you have a requirement!

- Fully Licensed
- Diverted from Landfill
- WEEE Waste
- Reliable & Friendly Staff
- Single Bulky Items
- Full house clearances
- Residential & Commercial Services

OUR SERVICES:

- Declutter Service
- Property Clearance
- Garden Clearance
- Loft Clearance
- Office Clearance
- Sharps Removal
- Window Cleaning
- Extreme Cleaning
- Biohazard Cleaning
- End of Tenancy Cleaning
- Decontamination Cleaning
- COVID-19 Fogging
- Carpet Cleaning
- Void Property Cleaning
- Wheelie Bin Cleaning
- Hazardous Waste Removal
- WEEE Electrical Waste
- Graffiti Removal
- Skip & Grab Hire
- Confidential Shredding
- Jet Washing Service
- Touch Point Cleaning



BIN CLEANING from £3.50