

Nene Valley

news

YOUR LOCAL INDEPENDENT COMMUNITY
NEWSPAPER FOR EAST NORTHAMPTONSHIRE

Telephone:
01522 692542

We want to hear from you,
so please submit your
news story or event at
www.nenevalleynews.co.uk

INSIDE
this issue



**EXECUTIVE SETS OUT
FUTURE FUNDING
ARRANGEMENTS FOR
MAINTAINED NURSERIES**

PAGE 03



**ARTS, CRAFTS
AND COURSES
AT COLEMANS**

PAGE 07

NEWS IN BRIEF

Enjoy cowslips and fritillaries

Get out and about this
Easter weekend with a
visit to St Peter's Church,
Newton Bromswold.

The churchyard is in
full bloom with cowslips
and fritillaries and you can
enjoy this colourful carpet
between 2pm and 4pm on
Sunday 17th and Monday
18th April. Afternoon teas
are being served so there
are welcome refreshments.
Further details: 01933
315864.

Easter adventures at Lyveden

Over the bank holiday
weekend you can join
Lyveden's Easter trail, with
a special chocolate surprise
at the end (cost £3).

Enjoy a game of 'Springol!'
by listening out for the
many sounds of wildlife and
nature on your adventure
and ticking them off one by
one. Until Monday 18th April
(10am-5pm, last entry 4pm).

Take part in the Spring
Haiku Trail – search for
poetry clues to see if you can
identify the 10 animals that
make Lyveden their home.
Until Sunday 24th April.

Visitors can bring a picnic
or stop by The Manor café.
For more information about
Lyveden visit nationaltrust.org.uk/Lyveden

INCREDIBLE RESPONSE TO APPEAL FOR UKRAINE SUPPORT

*£23,000 has already been donated to a local appeal
which is aiming to help those fleeing war-torn Ukraine
start building a new life in Northamptonshire.*

The appeal has been co-ordinated
by the Northamptonshire
Community Foundation (NCF)
which was set up to support
disadvantaged people and
communities.

NCF Deputy CEO, Rachel
McGrath, who is co-ordinating the
newly launched appeal said: "We
welcome the care, concern and
generosity of local people and
donors at this time.

"These funds are so urgently and
desperately needed to support the
resettlement response on the ground
and enable charities to provide a
safety net in resettlement.

"We have been working with
community foundation colleagues
across Europe, including [in] Ukraine.

"We have seen the response on the
ground by community foundations in

Ukraine, Poland, Hungary, Slovakia,
and Romania and how they have
mobilised volunteers and collected
funds to provide immediate relief and
to aid refugees.

"Community foundations in the
UK are also playing their part in that
emergency response and that is why
we are launching our Welcome Fund
appeal to ensure community groups
and charities preparing to welcome
Ukrainian refugees have access
to funds and resources, to ensure
families and individuals fleeing the
conflict and violence are made to
feel welcome, safe and well."

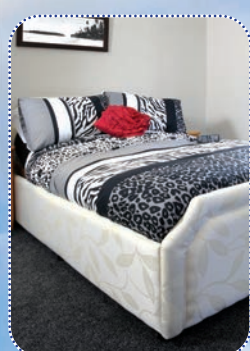
Cllr Jason Smithers, Leader of
North Northamptonshire Council
said: "We've all seen the images
on the news of the devastation and
chaos which is being wreaked on

Continued on page 2



Marina fundraising success: White Mills Marina on the River Nene in Earls Barton has raised a terrific £1,100 for the DEC Ukraine Humanitarian Appeal. The cash was raised by hosting an online auction which included a luxury picnic on the River Nene, a weekend camping at the marina's Certificated Camping and Caravanning Club Site and a weekend for two in nearby Mary's Shepherd's hut. The total was boosted further after the Friends of the River Nene, who have established a close working relationship with the marina, donated a fabulous £500 for the appeal. Commenting on the result, marina Office Manager Kay Elderkin added, "We have all been totally rocked by the Ukraine disaster and felt we wanted to do our little bit to help in any way we could. We are delighted with the amount we raised and would like to thank everyone for their generosity and helping us to achieve such a great result." Pictured: Gary Butcher, White Mills Marina Operations Manager and Kay Elderkin. Further information is available from info@whitemillsmarina.co.uk

SHOWROOMS: 69-71 WASHBROOK RD • RUSHDEN • NORTHANTS NN10 6UR action2mobility.co.uk



Wet rooms
and easy access
bathrooms
supplied
and fitted

Action²Mobility
THE REGION'S LEADING MOBILITY AID CENTRE

Phone us for
delivery if you're
shielding*

Simply make your choice and
phone through your order to
0800 698 2588

*Limited to 25 miles radius from our
showrooms in Rushden

CALL FREE: 0800 698 2588

MON-FRI 8am-4.30pm

FREE PARKING

Stockist of Cosyfeet and Sandpiper shoes

STAIRLIFTS: FULLY GUARANTEED, FREE HOME SURVEY

WILDLIFE NEWS

WORDS BY
ROY BURRELL

Miniature CCTV cameras are increasingly popular and often limited by cost more than suitability. They can be put to a wide range of uses, especially in the natural world, allowing access to inconvenient areas or those not able to be reached without disturbing the subject.

Some countryside activity would not have been visible, and part of the delight (and at times frustration!) is examining sites which would otherwise not be open to us. For example, CCTV confirmed that there is still a hedgehog visiting our garden, even if not yet as frequently as last year.

Yet things can go wrong and we wish we had done a little more. That hedgehog visitor was first caught in a lean-to shed with limited lighting. The same camera was a reminder that the black-and-white picture had a limited range, as one other visitor proved harder to identify. After several re-runs it was judged to be a newt. It was captured on a garage floor, with not even a persistent puddle to supply a water source – a problem because these are ‘amphibians’, meaning

that water is needed for at least part of their life cycle. The more familiar frogs and toads, and their colourless eggs with a black dot in the middle are familiar sights of the season (but unfortunately less often found compared to decades ago). Newts produce similar looking eggs, but may have some protection, as the female folds the eggs into a little parcel.

The absence of colour was a problem because the male great crested newt can show bright orange areas underneath – not only a welcome patch of colour in what might be a dull area, but also a great help in deciding what we had caught. Other species are not quite as cheerfully decorated. Surprisingly the final identification came from a shadow; as the name suggests this newt has a ridge along its spine, and the animal luckily passed the light source, and at one point the shadow clearly showed that outline. The encouraging point for a species in some danger is that our river valley can still meet the conditions needed to give hope for the future.

GENEALOGY JOTTINGS

WORDS BY
JAN PEARSON

Although I know that some of you have been following this column since I started writing it back in 2015, there are also folk who move in and out of the area who might not have thought about starting research into their family's history. Hello to you!

This is not just a hobby (or obsession) for older people, but children of all ages can also find it fascinating. I even had the privilege of helping one student who decided that she would like to research a branch of her family as part of her Duke of Edinburgh award. I have been interested in my own family since I was aged about 4 and my Gran used to tell me stories about her 12 brothers and sisters to keep me (a hyper-active nightmare) occupied!

But... never believe all that you are told! Those of us who have been lucky enough to have relatives who remember events from way back and listen to their stories – always get a second opinion! Memories can become mangled over time, stories are embellished – especially if they are passed from

person to person – remember Chinese whispers? Maybe you have great expectations as a result of these tales. What is your reason for wanting to trace your family history? If it is because you are hoping that you are related to famous people in the past, then chances are that most of us will not be. It is more likely that we will find line upon line of agricultural labourers – the 1851 census records 1,460,896 people working in that field (pardon the pun!) the largest single occupational group. By 1871, the largest group of employees were working as domestic servants.

If you find a name that is ‘famous’ you might want to find a connection, but beware of trying to find one where none exists. Remember: family history should be more than just a list of names and dates. Try to find out as much as possible about the individuals – put some flesh on those skeletons!

Genealogy Specialists, Tracing Our Past, Discovering Our Genes (TOP DOG)
www.genealogy-specialists.com

Continued from page 1

Ukraine, so it's only right that we do what we can to support people seeking solace here in the UK.

“In times such as these the people of North Northants show tremendous generosity and kindness and the people from Ukraine will be made to feel very welcome.”

Local authorities have been tasked with co-ordinating the Government's activity, particularly around the Homes for Ukraine scheme.

Council staff in North Northamptonshire are in the process of contacting sponsors, who will be hosting Ukrainian visitors, about necessary property and security checks.

The council is currently:

- Training staff to carry out initial property and suitability checks
- Seeking to establish a resettlement and refugee support team to help Ukrainians and their households access services and navigate systems
- Setting up a dedicated Disclosure and Barring Service (DBS) process to carry out the necessary security checks

If you would like further information about how to sign up for the Homes for Ukraine scheme, you are advised to visit the Government's website in the first instance.

PARKING RESTRICTIONS BEGIN AT ON-STREET CHARGING BAYS

Parking restrictions and enforcement are being introduced at the new on-street electric vehicle charging bays in North Northants.

In January 2022, on-street electric vehicle charging points were installed at seven locations across North Northants as part of the council's partnership with the Virgin Park and Charge (VPACH2) project.

Each location has four parking bays. To minimise the impact on parking availability in the short term, two bays are for electric vehicles (including hybrid) only while two bays can accommodate either electric or non-electric vehicles.

The enforcement will be for the electric only

bays – marked ‘Electric Vehicles Only’ – effective from 8th April:

- Wellingborough, Castle Road
- Wellingborough, Knox Road
- Thrapston, Highfield Road
- Kettering, Telford Way
- Kettering, Linnell Way

From 18th April

- Higham Ferrers, Newman Street
- Rushden, York Road

To give residents time to adjust to the new parking arrangements, drivers who flout the parking restrictions during the first two weeks following enforcement will be issued with warning notices, rather than a Penalty Charge Notice.

NEW STYLES NOW IN

DB FACTORY SHOE STORE

HUGE CHOICE OF SHOES AT BEST PRICES

DUNLOP SKECHERS MARCO TOZZI

10% OFF*

WITH THIS ADVERT
QUOTE: NVX2215M
VALID UNTIL
15/07/22

www.dbfactoryshop.co.uk FREE ROADSIDE PARKING

DB Shoes Ltd, 19-21 Irchester Rd, Rushden NN10 9XF

Opening times
Mon - Sat 10am - 5pm.

EXTRA WIDE FEET? Visit our specialist shoe fitting centre next door!
Visit www.widerfitshoes.co.uk or call **01933 410305** to make an appointment

*10% discount excludes sale items

Want to place an advertisement or submit an article?

If you wish to contribute or have any comments please email news@nenevalleynews.co.uk or call 01522 692542. To advertise, call 01522 692542. Alternatively you can email advertising@nenevalleynews.co.uk

If you are not receiving your copy of Nene Valley News, please email distribution@km-media.co.uk or telephone 01522 692542.

If you would like to receive this publication as a download, Nene Valley News is available online as a pdf at nenevalleynews.co.uk.

You can also subscribe to Nene Valley News for £1.50 per issue.

Nene Valley News is produced by KM Media & Marketing, County House, 9 Checkpoint Court, Sadler Road, Lincoln LN6 3PW.

Copy dates for Nene Valley News

Publication date: Saturday 30th April
Articles to the editor by: Wednesday 20th April

Publication date: Saturday 14th May
Articles to the editor by: Wednesday 4th May

km
KM Media & Marketing
Your partner in publishing

km
KM Media & Marketing
NEWSPAPERS | MAGAZINES | WEBSITES

To advertise in
Nene Valley News call
01522 692542

CRAFT & GIFT FAIR

IN AID OF
SAVE THE CHILDREN
— FREE ENTRY —

Queen Victoria Hall
7 West Street
Oundle
PE8 4EJ

14th May
10am - 3pm

Browse a wide selection of handmade crafts and unique gifts not found on the High Street

FREE ENTRY with a donation to Save the Children appreciated.

Stallholders email: coulterlyons@yahoo.co.uk
or Telephone: 01832 611140



EXECUTIVE SETS OUT FUTURE FUNDING ARRANGEMENTS FOR MAINTAINED NURSERIES

North Northamptonshire Council's Executive met recently with representatives of maintained nurseries to consider the options for the distribution of supplementary funding for 2022/23.

The options considered at the meeting were consulted on with the four maintained nurseries in North Northamptonshire: Highfield, Croyland, Ronald Tree and Pen Green. Full consideration has also been given to the options in consultation with the North Northamptonshire Schools' Forum as a statutory consultee.

The meeting was very well attended by those who represent the maintained nurseries and there were a significant number of public speakers who addressed the meeting.

At the conclusion of the meeting, the Executive recommended to the Council that, for 2022/23 only, a one-off grant funding of

£650,000 from the Council's Contingency Budget will be awarded to the four maintained nurseries. They also recommended that £350,000 is awarded to Pen Green Nursery and £100,000 to each of the other three maintained nurseries. The funding, if approved by the Council, will be subject to specific grant agreement and conditions.

The above temporary funding will allow the nurseries time to adapt whilst the Council moves towards a participation-based funding model as set out in Option Two of the report to the Executive.

Councillor Jason Smithers, the Leader of the Council said: "We have seen and heard passion and commitment from all of our nurseries and their advocates. I thank

everyone for their contribution and attendance today. We also actively debated this within the Executive and I fully understand the strength of feeling regarding the funding for our maintained nursery schools in North Northamptonshire.

"For me, it is essential that we ensure all four of our nursery schools are funded fairly from the resources available so that they can provide the support for children in their formative early years.

"Listening to all of the debate, it is clear that we do need to review the maintained nursery funding and provision, as set out in the recommendations, especially as the overall level of grant funding has reduced from



previous years.

"I am committed to supporting all four nurseries through the proposed funding changes over the next year whilst the Scrutiny Review takes place."

Councillor Scott Edwards, Executive Member for Children, Families, Education and Skills said: "All four

nurseries do exceptional work but if the current arrangements continue as they are it will most likely lead to the closure of some of these nurseries.

"The equality of funding is vitally important to ensure fair and equal opportunities are provided to all our local children, regardless of where they live. When making this

difficult decision, we have kept in mind the core purpose of the nurseries, ensuring that they are focussed on the children. The recommendation to the Council to provide transitional funding is the best way forward and gives everyone the time they need to adapt during what are difficult financial times for all."

Bosworth's Garden Centre



Plant Centre

Our Plant Centre is bursting with plants to enhance your outside space. Our knowledgeable team is on hand to help you choose the perfect plant.

Mulberry Café

Mulberry Café

Offering an exciting menu in a relaxed setting overlooking our Plant Centre. Breakfasts, Light Snacks, Main Meals, Cakes and Afternoon Teas

Elton, Peterborough, PE8 6SH

Tel: 01832 343104

www.bosworthsgc.co.uk

BOSWORTH'S
Garden Centre



RB Travel
01536 791066

APRIL

Tue 19 Warwick
Thu 21 Banbury Market
Sat 23 Belvoir Castle & Gardens
Sun 24 Skegness
Wed 27 Audley End House & Gardens
Thur 28 Southwold & Suffolk Tour
Sat 30 Oxford or Oxford Castle

MAY

Sun 1 Melton Mowbray Cheese Fair
Mon 2 Bakewell Bank Holiday Market
Mon 2 Llandudno Victorian Extravaganza
Wed 4 Bury St Edmunds Market Day
Sat 7 Lincoln
Sat 7 Malvern Spring Show
Mon 9 Derbyshire & Peak District
Wed 11 Lion King or Only Fools & Horses
Fri 13 Stamford Market & Grantham
Sat 14 Hunstanton
Sat 14 Keighley & Worth Valley Railway
Sat 14 Springfields or Spalding
Wed 18 Wye Valley River Cruise with Lunch
Thur 19 London Museums or free time
Fri 20 Savill Gardens
Sat 21 Clacton
Sun 22 Camden Market
Tue 24 Mystery Tour - Full day
Thu 26 Constable Country & Essex
Sun 29 Brighton
Mon 30 Cotswold Farm Park - Adam Hensons
Tue 31 Family Seaside Mystery

JUNE

Thu 2 Trooping the Colour, Queen's Jubilee
Fri 3 Royal Navy Submarine Museum, Gosport
Sat 4 Skegness
Sun 5 Jubilee Pageant for Queen's Jubilee
Tue 7 Melton Mowbray Market Day
Wed 8 Sheringham & NNRW
Thu 9 Horse Sanctuary & Norwich
Sat 11 Hunstanton
Sun 12 Great Yarmouth
Tue 14 Hyde Hall Gardens & Cream Tea
Wed 15 Nottingham Cruise & Lunch
Sat 18 Cromer
Sun 19 Gardeners World & Good Food Show
Tue 21 Salisbury Market Day
Fri 24 National Arboretum & Lichfield
Fri 24 National Arboretum
Sun 26 Coronation Street Tour
Tue 26 Swanage
Tue 28 Windsor Luxury Afternoon Tea Cruise

Check out our website for further days out
www.rbtravel.co.uk



JUNE

5th-9th - HISTORY WITH MYSTERY IN THE SCOTTISH BORDERS

New Lanark Mill Hotel, Half Board, includes excursions £539pp. New Lanark is an exceptional example of a purpose-built 18th century mill village, set in a picturesque Scottish landscape near the Falls of Clyde, where in the early 19th century the Utopian idealist Robert Owen (1771-1858) inspired a model industrial community based on textile production and formulated his Utopian vision of a society without crime, poverty, and misery. Includes guided tour of Drumlanrig Castle & Country Estate, and many more attractions.

12th-18th - RAIL & SAIL IN THE WESTERN HIGHLANDS

The Winnock Hotel, Drymen. Half Board, includes excursions £629pp. In the Trossachs and the Queen Elizabeth Forest Park you will enjoy a 2-hour cruise on Loch Katrine. We visit the iconic Falkirk Wheel for a boat trip on wheel and canal, the heritage Bo'ness & Kinneil steam railway, the most scenic rail journey in the world and a day exploring Loch Lomond for shopping, followed by a 2 hour cruise on the loch.

AUGUST

8th-12th - EDINBURGH TATTOO

The Winnock Hotel, Drymen. All Inclusive, includes Excursions £589pp. Located in the beautiful Loch Lomond and Trossachs National Park. The park consists of 40 mountains ranging from 2500ft to over 3000ft, 22 lochs, 50 rivers and two forest parks, The Argyll Forest Park and the Queen Elizabeth Forest Park. The Campsie Fells hills to the west are a range of volcanic hills which hosts a variety of farmland, open moors, steep-flanked glens, attractive woodland and sparkling burns. This holiday includes evening entertainment and entrance to the Edinburgh Tattoo and lunch.

All 2022 holidays are available to book please call us for a copy of our brochure.

CALL NOW ON
01536 791066
TO GET OUR FREE BROCHURE!
taurus@rbtravel.co.uk
www.taurusholidays.co.uk

Learn in the **great outdoors**

Whether you are looking for adventurous activities or environmental education, Nene Park in Peterborough offers a huge range of opportunities for outdoor learning, where young people can try different activities, develop new skills and most importantly have fun!



> ENVIRONMENTAL EDUCATION

Our education team offers a range of environmental education activities designed to tie in with national curriculum requirements at all levels. Teachers can choose from a selection of themed days

developed to target specific curriculum areas or, with the help of our knowledgeable staff, can select from a wide range of activities to create a day tailored to individual requirements.

> OUTDOORS ADVENTUROUS ACTIVITIES

From our base at Nene Outdoors Watersports and Activity Centre, our team offers a safe and fun environment to encourage personal development and group cohesion through a wide range of land and water-based adventure activities. Our qualified staff will discuss your learning outcomes with you, and offer advice on selecting a range of activities to meet your learning requirements, curriculum links and the needs of your pupils.

The Nene Outdoors team can also visit your school and run various education and adventurous activities on site.



> RESIDENTIAL VISITS

With stunning lake views, our campsites are discreetly tucked away from the bustle of the rest of the Park. Facilities include a shelter, benches, campfire, a fixed barbeque stand, wash area and cold water tap. Access to the toilet and shower facilities at Nene Outdoors is available 24 hours a day. Choose from our Lakeview Bell Tent

campsite or pitch your own tents on The Glade campsite.

> FOREST SCHOOL

Our Forest School activities provide pupils of all ages regular opportunities for hands-on learning experiences in a woodland setting. We offer a range of experiences, from Forest School taster days to full length Forest School courses.

To find out more please visit www.nenepark.org.uk/education

School visits to Nene Park

The region's favourite place to get outdoors and enjoy nature.



- Adventurous activities on water & land
- Environmental education days and activities
- Residential camping trips
- Outreach visits to your school
 - Forest school
 - Teacher training

 Nene Park

@neneparkpboro
www.nenepark.org.uk/education

 nene
OUTDOORS

Stunning
Lakeside Wedding
Venue in East
Northamptonshire

Berryfields
Wedding & Glamping Venue

— 01780 784828 —
berrylfieldsevents@gmail.com



KM

KM Media & Marketing
NEWSPAPERS | MAGAZINES | WEBSITES

To advertise in Nene Valley News
please call **01522 692542**

INITIATIVE OFFERS 'TEXTS THAT TEMPT'

There's been a successful start to the Nene Reading Challenge, with more than £1,000 already pledged to help buy books that get children reading.

Nene Education Trust, a multi-academy trust of eight schools in East Northamptonshire, launched the initiative earlier this year, with the aim of raising £10,000 to provide each school with a set of 'texts that tempt', to get readers of all ages to pick up books. The collection has been specially chosen to appeal across the entire school age range, and to give children access to books that will inspire and challenge them.

The appeal is being spearheaded by Julie Bloor, Secondary School Improvement Partner at Nene Education Trust, who said: "The response to the challenge has been very positive and we've already raised £1,147. We started the challenge with a Zoom assembly for KS2 Students with the author Jen Carney in February – it was a real success and the students loved it.

"When children read, no matter what it is they are reading, they improve their chances of doing well at school."

As the Challenge continues, children at the Trust's schools have been showing just how important reading is to them by taking part in the charity Read For Good's national

Readathon.

The Readathon involves pupils choosing what they want to read, from comics to the classics, and asking family and friends to sponsor them per book or per minute spent reading. The money raised is used by Read For Good to buy books for children's hospitals.

Julie Bloor added: "We're still looking for businesses or organisations in the area who feel they can help, either covering the cost of one school or making a contribution to the overall total."



Any businesses that can help with the Nene Reading Challenge can contact Nene Education Trust via the website www.neneeducationtrust.co.uk

Your Health – Back braces

**WORDS BY
CLAIRE SHORT**

You've got back pain and your friend has offered you their back brace. What do you do? Do they work? Do they make your muscles weak? Do you become dependent on them?

As you can imagine, some of the answers to these questions will include the words "it depends," but here are my thoughts:

It's unlikely you'll become dependent on a back brace. Back braces aren't usually very comfortable to wear for long periods of time, and they tend to slip after a while. It would be hard to get one to stay in place long enough for you to become dependent on it.

The same goes for it causing your muscles to become weak. Wearing a brace doesn't stop your muscles working as you move around. It's just not possible. Imagine a lawnmower that has loose screws holding the engine in place. It won't suddenly stop working if you put a big strap around the

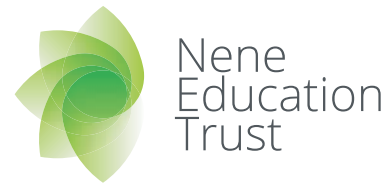
engine to stabilise it. It will just be more stable.

So, is it worth using a brace? Well, it depends (I did warn you!). Mostly, it depends on the underlying cause of your pain. On the whole I would say that yes, a back brace can usually help stabilise your back while you are in acute pain. A brace is also helpful if you're lifting heavy objects.

The problem is that the brace will not uncover the cause of your problem. Nor will it prevent the problem recurring. I used my own lumbar brace when we were lifting and unpacking boxes when we moved the clinic to Market Square in Higham. I combined this with treatment and exercises that are appropriate for my body though.

If you're not sure whether to use a brace, ask a professional. While you're there, get some appropriate exercises for long-term pain relief. You wouldn't leave your lawnmower with loose engine screws, so don't leave your body if it's not working properly. Have a bracing week!

Claire Short, Registered Osteopath, runs The Ashgrove Clinic in Higham Ferrers. Send your questions to claire@ashgrovehealth.co.uk or Tweet to @AshgroveClinic



Nene Education Trust's focus is raising aspirations and developing character in a positive environment.

The Nene Education Trust is a local network of schools based within East Northants & Wellingborough.

Scan the QR code to visit our website and find out more about the Nene Education Trust and our schools.

Who we are



Regent Wrought Iron Ltd

The Regent Street Wrought Iron Works

180-186 Regent Street, Kettering, Northants NN16 8QH

PHONE 01536 485892

High quality gates and fencing hand made on the premises since 1963



Single gates from £60.00
Side entry from £99.00
Double gates from £120.00



We have 18 styles to choose from. All on show in our showroom. Full fitting & painting service.

Automatic Estate Gates

- Highest quality equipment
- Up to 14' opening
- Flat draped or bow topped
- Fully installed & painted
- **FREE** first year service
- **Guaranteed for 2 years**
- **Full back up & yearly service**
- **We have been installing automation since 1998**
- **Full pressure tested and certified to BS 12453**



We can automate your existing gates (if suitable) or upgrade old equipment to meet BS 12453 safety regulations



Has your garden wall/fence had it? Replace it with wrought iron!
LASTS A LIFETIME • USUALLY FITTED IN A DAY

BEAT THE BURGLAR – Free security locking bolts fitted to all our side entry gates or full range of mortise locks fitted

Visit our website for our online catalogue www.regentiron.co.uk



**North
Northamptonshire
Council**

Notice of planning APPLICATIONS RECEIVED

Notice is given that the following applications have been received by North Northamptonshire Council – Thrapston Office together with the last date for making representations:

> HARRINGWORTH

Variation of condition 3 to allow for shortened single storey rear extension which is now part 2 storey; Rear elevation amendment; Use of Attic Roof space; New Air Source Heat Pumps to side of Kitchen; Solar Panels added to rear roof face; Omission of Swimming Pool and associated ASHP's pursuant to NE/21/01067/FUL - Remodelling existing property with 2 storey extension to west; Removal of front entrance porch; Two storey front gable roof extension; Single storey extensions to east and south; Replacement front entrance gates and stone boundary wall; Demolition of existing garage; Swimming pool to rear. At Maystone House Gretton Road Harringworth NN17 3AD (Info) (LB/CA) (Info) NE/22/00400/VAR (10 May 2022)

> LAXTON

Single storey side extension to replace existing conservatory, rendering of existing dwelling and garage, and new vehicular access. At Mandaley Main Street Laxton NN17 3AT (Info) (LB/CA) (Info) NE/22/00281/FUL (10 May 2022)

> KINGS CLIFFE

Installation of new projecting signage at 68 West Street Kings Cliffe PE8 6XA (LBRegs) (Info) NE/22/00371/LBC NE/22/00383/ADV (10 May 2022)

> NASSINGTON

Replacement of existing rear annexe with a larger extension to provide additional space for dining and garden room at 25

Church Street Nassington PE8 6QG (Info) (LB/CA) (Info) NE/22/00411/FUL (10 May 2022)

> RUSHDEN

Open timber porch and semi cellar (part retrospective) at 87 High Street South Rushden NN10 0RA (Info) (LB/CA) (Info) NE/21/00484/FUL (10 May 2022)

> FOTHERINGHAY

Single storey front porch extension, addition of render to the brickwork, new windows and doors and external staircase to side elevation of existing garage at Willowbrook House Nassington Road Fotheringhay PE8 5JF (Info) (LB/CA) (Info) NE/22/00350/FUL (10 May 2022)

> WARMINGTON

Construction of a new wet room, shower and WC, and entrance lobby at 22 Church Street Warmington PE8 6TE (LBRegs) (Info) NE/22/00414/LBC (10 May 2022)

> TITCHMARSH

Installation of 18 solar panels on the roof of the existing dwelling at The Dairy 8 Manor Farm Court Titchmarsh NN14 3EJ (Info) (LB/CA) (Info) NE/22/00377/FUL (10 May 2022)

> NASSINGTON

The retention of four static caravans and the stationing of six additional caravans for occupation by seasonal agricultural workers and the installation of a package treatment plant at Lyveden Farm Fotheringhay Road Nassington PE8 6QX (Info) (Part3) (Info) NE/22/00306/FUL (10 May 2022)

> KINGS CLIFFE

Replace 3 no. ground floor front windows; Replace 1 no. top floor, side

window; Replace 3 no. rear windows (1 x top floor, 2 x middle floor); Replace 2 no. below ground cellar windows at 42 West Street Kings Cliffe PE8 6XA (Info) (LB/CA) (Info) NE/22/00381/FUL (10 May 2022)

> RAUNDS

Variation of condition 1 to allow for amendment to highway link between the housing and commercial areas in the northwest part of the site, and landscape plan pursuant to 14/01082/REM 'Reserved matters: For appearance, landscaping, layout and scale pursuant to 12/01889/VAR, pursuant to 09/01626/OUT: Outline application: Proposed sustainable urban addition to Raunds comprising residential (Use Class C3); residential care facilities (Use Class C2); business (Use Class B1); storage and distribution (Use Class B8); new vehicular and pedestrian access and associated road infrastructure, public open space, landscaping (including flood alleviation measures), and conversion of existing buildings to provide residential (Use Class C3) and/or community facilities (Use Class D1) (All matters reserved except for access)'. At Land North Of Raunds Fronting Brick Kiln Road North Street Brooks Road And Midland Road Raunds (Info) (Part3) (Info) NE/22/00392/VAR (10 May 2022)

> WOODNEWTON

Conversion of existing steel framed barn into dwelling (previously approved under app: NE/21/00058/PDU, but with addition of rear balcony and garden room). At Barn Rear Of 17 Main Street Woodnewton PE8 5EB (Info) (LB/CA) (Info) NE/22/00409/FUL (10 May 2022)

> OUNDLE

Single storey rear extension, replacement

windows, replacement rainwater goods at 35 North Street Oundle PE8 4AL (LBRegs) (Info) NE/22/00393/LBC (10 May 2022)

> BRIGSTOCK

Remove the wall to right side at back of property and replace it with large farm style gate allowing vehicle and pedestrian access at 20 High Street Kettering NN14 3HA (Info) (LB/CA) (Info) NE/22/00045/FUL (10 May 2022)

The reason for applications being advertised is as follows :

Part3 - Town and Country Planning (General Development Procedure) Order 2015.

Part16 - Town and Country Planning (General Development Procedure) Order 2015.

Info - Non-statutory - included for information only.

LB/CA - Planning (Listed Buildings and Conservation Areas Act 1990.

LBRegs - Planning (Listed Buildings and Conservation Areas) Regulations 1990.

**Rob Harbour, Assistant Director
Growth And Regeneration**

Dated 16 April 2022

Consultation deadlines will differ for each application.

You can see details of these applications at www.east-northamptonshire.gov.uk/planningapplications.

For details of how we treat your data, please see our Privacy Statement: www.northnorthants.gov.uk/privacynotices

Consultation deadlines will differ for each application. Please go to www.east-northamptonshire.gov.uk/planningapplications for details.

NORTH NORTHAMPTONSHIRE COUNCIL IS CHANGING THE WAY IT DELIVERS ITS HOUSING OPTIONS SERVICE

Important changes have been made to North Northamptonshire's Housing Options service effective from 1st April 2022.

Midland Heart Housing Association previously delivered the Housing Options function on behalf of the council in the former East Northamptonshire area. This includes its statutory homelessness and housing allocations functions. In order for us to bring our services in-line across North Northamptonshire as one

council, we have brought this function in-house and will be providing it directly as of 1st April.

Please be assured that your Keyways housing application or any homelessness application that you may currently have registered will not be affected by the changes. You do not need to reapply. Your application(s)

will continue from the original date. You do not need to do anything.

However, the office at 50 High Street South, Rushden has been closed. The service will now be delivered from North Northamptonshire's other offices such as in Wellingborough, from the Tithe Barn offices, where Housing Options officers are

already based. Some offices will only be open to the public by appointment, so please contact the Housing Options service by email or phone in the first instance.

All future correspondence you will receive about your case will be from North Northamptonshire Council.

Portfolio Holder for Housing and Community, Cllr Andy Mercer, said: "It's important to us to serve the people of North Northamptonshire to the very best of our ability,



**North
Northamptonshire
Council**

and by bringing the Housing Options service in house we can ensure this continues to happen. Customers can rest assured that the change will not affect existing applications and they do not need to re-submit or change their application."

Leader of North Northants Council, Cllr Jason Smithers,

said: "We have done our utmost to ensure this change has minimal impact on the service customers have previously received. If customers do have any questions, please do not hesitate to contact our Keyways and Housing Options teams who will be happy to help."

Arts, crafts and courses at Colemans

Colemans Craft Warehouse is an Aladdin's Cave of Art, Craft and Hobby products, which is open to the public 7 days a week. With over 15,000 products in stock covering papercraft, home décor, haberdashery, floral craft, fine art, jewellery making and so much more, if you love crafting then you will be sure to fall in love with this place.

They also have a full workshop programme with courses in everything from crochet to cardmaking and felting to fine art. There is free parking right outside and the store is fully accessible for wheelchairs. There is also a lovely café serving tea,

coffee and cake. You can get a delicious Cream Tea for just £3!

On the first Saturday of each month they have fantastic event days. Entry is free and you'll get to experience live demonstrations, incredible offers and you can even have a

go at some crafting yourself!

Head down to Colemans Craft Warehouse on 7th May for a fun filled 'Art For All' day. They will be running Watercolour For Beginners classes with the wonderful Melanie Henson. Give them a call on 01933 355530 to

book your spot on either the morning (10am-12pm) or afternoon (1pm-3pm) session. The class will cost just £15 and all your materials will be

included.

They are located just 2 minutes from Rushden Lakes on Brindley Close which is opposite Lidl, and next door

to Screwfix. You'll be greeted by a friendly team who are on hand to give expert help and advice with any projects that you might be working on.



50 YEARS OF SHAPE DANCE CELEBRATIONS

North Northants Council along with Shape dancers, The National Heritage Lottery Fund and other guests rounded off 50 Years of Shape Dance celebrations on Saturday 26th March.

Over the last three years, thanks to National Lottery players and funding from The National Lottery Heritage Fund, Shape Dance, a scheme which has been running in Corby for over 50 years and which provides weekly dance lessons for over 300 children aged four and above, has been commemorating the milestone of turning 50 with a number of projects and events.

In March, they held one final event, a formal

gathering at the Holiday Inn which was the perfect opportunity to thank North Northants Council, the Heritage Fund, Shape dancers and teachers and everyone who has been involved with the scheme over the last five decades.

A Shape Dance Celebrating 50 Years documentary was filmed throughout the project and helped pull together the story and highlight the impact that this important scheme has had on the lives of so many people over the years. The documentary saw its official debut over the weekend and will be shared over the coming weeks with the wider community.

Art for All

**Saturday
7th May
9am-5pm**



Bring this voucher for a **FREE** cup of tea or coffee and a lovely slice of cake!



Watercolour for Complete Beginners with Melanie Henson

10am-12pm or 1pm-3pm
£15 with all materials included

Call 01933 355530
to book your spot

Debbie Brown
demonstrating
Achievable
Acrylic Art

**Free
Entry**

Local Artist
Exhibition

3 for 2 on all Winsor & Newton Paint
Discounted 'Beginners Bundles'
and so many more amazing deals...

Unit 6, Brindley Close, Rushden, NN10 6EN - 2 MINUTES FROM RUSHDEN LAKES !
T: 01933 355530 E: craft@colemangroup.co.uk W: colemanscraftwarehouse.co.uk

Nene Valley News - Events

- Sunday 17th April 10.15am: Easter Sunday Morning Worship with Holy Communion at Whitefriars Primary School, Boughton Drive, Rushden NN10 9HX. More details from office@whitefriarschurch.org.uk
- Wednesday 20th April 7.15pm: The Alpha Course at Oundle Baptist Church, No 1 St Osyths Lane, Oundle PE8 4BG. The Alpha Course explores the Christian faith in an open-minded and welcoming environment. Call 07491 685438 for more info.
- Saturday 23rd April 10am-4.30pm: Bird Festival, Elton Methodist Chapel, near Oundle. Excellent speakers lined up for the day from the RSPB; Waterfowl and Wetlands Trust; Peterborough Museum's Natural History Unit, and authors David Stroud, a world expert on migration, plus photographer and shoreline birds specialist Richard Chandler. Entry is free and there will be ample refreshments. There will be birdsong, bird books, walks (weather permitting), quizzes, a stunning photo display, stalls and a bird feeder-making session and other activities for children. Further information tel: 07532 062679.
- Sunday 24th April 10.15am: Morning Worship with Holy Communion at Whitefriars Primary School, Rushden NN10 9HX. More details from office@whitefriarschurch.org.uk
- 25th April (2pm), 4th May (2pm) and 11th June (11am): Homes for Ukraine Support Network, Irthlingborough Library. Socialise with those who are applying to house families from Ukraine.
- Wednesday 27th April 7.30pm: Peterborough Diocesan Evangelical Fellowship AGM at St James' Church, Thrapston, following home-cooked chilli with jacket potatoes and salad from 6.45pm and to be followed by a talk by Bishop Keith Sinclair, former Bishop of Birkenhead on 'Looking Ahead: Challenges and opportunities - where will Living in Love and Faith leave evangelicals in 2023?' All are welcome. Please contact Andrew Presland (andrew.presland.harborough58@gmail.com or on 01933 316927) by 8pm on Sunday 24th April if you wish to book a meal.
- Sunday 1st May 9.30am: Higham Ferrers Footpath Group, at Saffron Road Car Park for car sharing. Contact Daphne 01933 386839. 6.5-mile walk in Little Odell area.
- Sunday 15th May 8.50am: Higham Ferrers Footpath Group, at Saffron Road Car Park for car sharing. Contact Mark 07462422097 by 12noon on 14th May if walking. 6.2-mile linear walk, Stoke Bruerne to Gayton, Leg 4 of the Northampton round.
- Wednesday 18th May 6.15pm: Higham Ferrers Footpath Group, at Place Saffron Road Car park for car sharing. Contact Marion 07754810902. 3.6-mile walk in the Chelveston area.
- Sunday 29th May 9.40am: Higham Ferrers Footpath Group, at Place Saffron Road Car Park for car sharing. Contact Daphne 01933 386839. 10-mile walk, Wollaston/Summer Leys/Irchester. Bring a packed lunch.
- Friday 17th June 7.30pm: Rushden & District History Society. 'Film Archive Trust: The changing face of Northampton Racecourse - Royal Welch Fusiliers and Rushden Connections'. Whitefriars Primary School, Boughton Drive, Rushden NN10 9HX. Members £1.50, non-members £2.50. Tel. 01536 238320 for more information.

JONATHAN DRORI: AROUND THE WORLD IN 80 PLANTS

Thursday 28th April, 7.45pm - St Peter's Church, North Street, Oundle PE8 4AL

In this lavishly illustrated talk, Jonathan Drori will bring to life the science of trees and plants by revealing how their worlds are intricately entwined with our own history, culture and folklore. From the seemingly familiar to the downright bizarre, each story is full of surprises.

This latest publication by Jonathan is an inspirational and beautifully illustrated book that tells the stories of 80 plants from around the globe.

From the seemingly familiar tomato and dandelion to the eerie mandrake and Spanish 'moss' of Louisiana, each of these stories is unique. There is even a plant, and this is hard to believe, that seeks out telephone wires and severs them. Some have a troubling past, while others have ignited human creativity or enabled whole civilizations to flourish. With a colourful cast of characters all brought to life by illustrator Lucille Clerc, this

is a botanical journey of beauty and brilliance. Please come along and enjoy this botanical extravaganza.

Jonathan Drori CBE is an author and Trustee of The Eden Project and Cambridge University Botanic Garden, Ambassador for The Woodland Trust and the WWF, and Honorary Professor at Birmingham University's Institute of Forest research. Previously he was a Trustee of the Royal Botanic Gardens, Kew and Executive Producer of more than 50 popular BBC TV science series. His TED talks on botany have been seen by millions, and his book Around the World in 80 Trees is a worldwide bestseller in many languages.

<https://jondrori.co.uk/>
"Brings to life what is all around us if we'd only learn to see. Every page feels like being introduced to an old friend invested with new stories to light up the next few years of comradeship" - Sir Tim



Smit, Founder, The Eden Project
"Beautiful to behold and to read" - The Sunday Times
"An arboreal odyssey" - Nature

This event has been kindly sponsored by The Barn Garden Centre, Oundle. <https://www.thebargardencentre.co.uk/>
Tickets £10 (£8), £1 off early bird tickets bought before 21st April, available from the Oundle Box Office. Phone line open 10am-1pm, Mon to Fri. Tel. 01832 279086.

**Online at <https://oundlelitfest.org.uk/events/>
Enquiries contact oundlelitfestival@hotmail.co.uk**

Festival success for NMVC-Lite

On Saturday 2nd April, at this year's Oundle Festival of Music and Drama, Northampton Male Voice Choir-Lite was delighted to be awarded the Ray Sharp Memorial Cup for its performance in the Male Voice-Part Songs Class. In presenting the trophy, the Festival's Adjudicator commented that the choir had given "an extremely musical and well prepared performance" and one worthy of a "Distinction".

NMVC-Lite performed under its Musical Director, Stephen Bell, accompanied on piano by Sue Rayment.

As part of its current recruitment drive to attract more singers, NMVC will be holding another "open evening" from 7pm on Tuesday 19th April at Moulton College, The Barn, The Social Centre, Gate 1, West Street, Moulton NN3 7RR.

Why not go along and meet the choir and music team and find out all about them?

If you're interested please contact Marc Bentley on 07999

942390 or marc.bentley23@gmail.com.

And the following Saturday, 23rd April, NMVC will be singing from its exciting current repertoire of songs in the Weston Favell shopping centre from 11.30am to 12.30pm. A further great opportunity for anyone interested in joining the choir to watch it performing and ask questions about what's involved.

**NMVC website: <https://www.nmvc.co.uk>
NMVC YouTube channel: <https://www.youtube.com/channel/UCWCKnjss8p1LrO1NonSf0KQ>
Follow NMVC on Facebook, Twitter and Instagram**

150 Years of Childhood

Take a trip down memory lane at a fantastic

EXHIBITION OF CHILDHOOD MEMORABILIA

spanning over 150 years

Toys, games, books, comics, christening items, clothing, shoes, nursery furniture, crockery, and general childhood memorabilia from Victorian times to the 1980s

ST. ANDREW'S CHURCH
Cotterstock PE8 5HD

Saturday 30th April to Monday 2nd May 2022
11.00 a.m. to 5.00 p.m.

Admission £5
free goody bag whilst stocks last
accompanied children free

DRINKS and CAKES

Featuring Market Deeping Model Railway Club layouts with trains running every day

All proceeds to St Andrew's Church

[Find us on Facebook](#)

THURNING VILLAGE FAIRY TRAIL

The village of Thurning (near Oundle PE8 5RE) will be hosting its first ever Fairy Trail on Saturday 14th and Sunday 15th May, 12 noon-5pm.

The trail itself will be held in the area known as Thurning Spinney, which is situated next to the main 'Feast' field. There are over 30 beautiful and imaginative fairy houses to see, sculpted mushrooms, giant flowers and lots more to discover inside the trail.

On the main field will be mini fair rides, face painting, food and refreshments with children's activities in the tents. Picnics are welcome but there will be food and refreshments available on the day.

Admission is £5 per person. Under 3yrs free. Tickets are available through Oundle Box Office, Victoria Hall, open 10am-2pm. Tel 01832 279086, email: www.creative.oundle.co.uk. Alternatively, pay at the field booth upon arrival. All proceeds will be shared between St James' Church and Thurning Village Hall with a donation being given to Ukraine.

Please do not bring dogs to this event. Unfortunately, the Fairy Trail is unsuitable for wheelchairs because of uneven ground and narrow walkways. For further information please email Alison Pilkington: alisonajp@aol.com or tel. Sandy Capp on 01832 293330.

We've Moved!

11 Market Square in Higham Ferrers

Book a FREE 20 minute consultation
if you're not sure whether we can help.

Sports injuries, rehab, back pain, frozen shoulder, knee pains, foot problems, headaches - if you can't do your normal daily activities, or if you have a sports injury -
let us help you!

Physiotherapy | Osteopathy

Injury rehab | Sports injury therapy

Cranial osteopathy | Gait analysis

Shoulder treatments

Podiatry | Acupuncture

Hypnotherapy | Counselling

Rhythmic movement therapy

Book online...
www.ashgrovehealth.co.uk

01933 328020

The
Ashgrove
Clinic

Excellent person centred care, professional staff and immaculately clean well presented rooms. I would definitely recommend a visit if you're suffering, consultation free. Nothing to lose apart from your aches and pains. After only one session I have had amazing results and I am pain free most days now.

K Greenwood

FAMILIES MOST IN NEED TO BENEFIT FROM OVER £500,000 SUPPORT FROM NORTH NORTHAMPTONSHIRE COUNCIL

With the cost of living on the increase, the most vulnerable in North Northamptonshire are being given a helping hand. The authority will use a grant provided by the Department for Work and Pensions (DWP) for these one-off payments.

North Northamptonshire Council will be providing those eligible families, most in need with financial help, a payment in the form of vouchers that can be redeemed against shopping costs in a range of supermarkets. This extra support relates to families with children already on the School Holidays Meal Support Scheme who will receive a voucher, to the value of £50, to offset household costs and

maximise budgets.

In addition, the council is providing residents who are already approved applicants of the Household Support Fund Fuel Bank with a pre-payment meter voucher of up to £80 to assist with offsetting the increase in utility costs.

While the vouchers for families can be used at most major supermarkets they must be redeemed by 30th April, 2022. All eligible recipients will receive a notification together with the voucher,

there is no requirement to apply.

Cllr Jason Smithers, Leader of North Northamptonshire Council, said: "With inflation at the highest rate for decades and heating prices rocketing, many people are struggling to make ends meet with balancing their household finances.

"I'm delighted that we're able to offer this support to the most vulnerable in North Northants to help see them through this difficult time."



Higham Ferrers Farmers' Market is held in the historic Market Square between 9am and 1pm on the last Saturday of each month except December when it is usually the last available Saturday before Christmas.



Market Day




► Our Farmers' Market is a very successful monthly market which is accredited to the FARMA Association. With around 20 stalls providing a great variety of local produce and many award winning traders. Some produce varies depending on the season and farming schedules but always includes a great range of meat, poultry, fish, cheese, cakes, honey, chutney, pies, hot drinks, bread, fruit, vegetables and much more.

Buying from local producers means you can ask them direct questions about their products and get advice or even recipe ideas from these friendly and helpful traders.

The market creates a lovely atmosphere in the town throughout the year and there are often extras such as craft stalls, charity stalls and a Christmas Band in December.



Follow us on 

Care Home Fees and financial assessments

The majority of people when they enter permanent residential care are described as 'self-funders', meaning they fund 100% of their care placement.

However, when their assets fall to £23,250 the Local Authority has a duty to step in and assist with those fees. The Local Authority will need to carry out a care needs assessment and a financial assessment to decide how much you will need to contribute and whether your current care placement is suitable.

There is always a risk, following these assessments, that the Local Authority will decide that you or your loved one needs to move to an alternative care placement. This is normally due to the home's fees being too high and the Local Authority not being able to meet the level of funding

required. Usually in this situation the Local Authority will find an alternative care placement, which they are able to fund.

However, it is important to ensure that the care planning for any individual has been done correctly. All care planning should be person-centred and must meet the needs of the person while also considering their wishes and feelings. In addition to this, the Local Authority should not set arbitrary upper limits on costs that they are willing to pay,

as this does not support the person-centred approach to care planning for an individual. Each decision must be made based on the individual's circumstances and the chosen option must deliver the best outcome for the individual.

If you do not feel that the outcome of the assessment is the best option for you or that the assessments were not completed with you or your loved one's best interests in mind, then you can ask for the decision to be reconsidered.



If you would like assistance with requesting a reconsideration of their decision, Wilson Browne Solicitors have an experienced team who would be able to assist. Call 0800 088 6004.

We're not
NEW *... and we've never been ...*
NORMAL

We've been around a long time and pride ourselves on a service that stands out from the crowd.

0800 088 6004 | enquiries@wilsonbrowne.co.uk | wilsonbrowne.co.uk

wilson browne SOLICITORS

Quality Repairs To Windows & Doors

THRAPSTON GLAZING

Est 85 WINDOW & DOOR REPAIRS

FREE QUOTES FREE GENUINE ADVICE

QUALITY REPAIRS TO ALL MAKES OF WINDOWS, DOORS AND CONSERVATORIES SUPPLIED AND FITTED BY ANY COMPANY.

REPLACEMENT GLASS UNITS, NEW LOCKS, NEW HINGES, NEW LETTERBOXES, NEW HANDLES ETC... WITH COMPLETE FITTING SERVICE

WE ALSO SERVICE WINDOWS, DOORS AND PATIO DOORS ADJUSTING AND LUBRICATING AS WE GO, BADLY ADJUSTED DOORS ARE THE MAIN REASON FOR LOCK FAILURE.

WE STOCK AND SOURCE THOUSANDS OF SPARE PARTS TO SUIT ALL MAKES OF WINDOWS AND DOORS

OTHER SERVICES INCLUDE, CUT GLASS, TOUGHENED GLASS AND GREENHOUSE GLASS ALL DELIVERED TO YOUR DOOR WITH FITTING SERVICES IF REQUIRED.

ALL OUR FITTING ENGINEERS HAVE OVER 30 YEARS EXPERIENCE WORKING FOR US.

PLEASE CALL OR EMAIL US FOR A FREE QUOTATION

01832 734570

www.thrapstonglazing.co.uk
[windowanddoorrepairs@talktalk.net](mailto>windowanddoorrepairs@talktalk.net)

Free Quotations • No Obligation

Locks • Hinges • Glass Units • Adjustments • Servicing • Letterboxes • Handles • Window Locks • Door Locks

Nene Valley news

CLASSIFIEDS

Deadlines for all classifications:
 5pm Monday prior to issue date. A complete version of our Terms and Conditions can be found online at www.nenevalleynews.co.uk. Pay by credit/debit card or cheque. All major credit/debit cards accepted. For help and information please call 01522 692542 or visit www.nenevalleynews.co.uk

Family NOTICES

Nene Valley News can help you make those important family announcements.

For help and information to place your notice please call **01522 692542** or visit www.nenevalleynews.co.uk

ACCOUNTANCY

Jon Essam & Co Ltd

Chartered Accountants

- Free initial consultation with fixed fee quotation
- Proactive accountancy and tax service for landlords, sole traders, partnerships and limited companies
- Tax planning and advice
- Registered auditor
- Bookkeeping, management accounts and VAT submissions
- Making tax digital (MTD) submissions
- Support packages available for all leading accountancy software systems
- QuickBooks Platinum ProAdvisor Partner with Xero and Sage
- Payroll, auto enrolment and CIS bureau service

Email or visit our website to arrange a free initial consultation
 23 Cottingham Way, Thrapston, Kettering, Northants NN14 4PL (behind the fire station)
info@essamca.co.uk | www.essamca.co.uk | 01832 730280

HOME IMPROVEMENTS

Simon Vale

Painter & Decorator

High quality • Competitive prices
 Free estimates

07568 587367 or 01933 228671

CONSERVATORIES

EG VICTORIAN 3500 BY 3500
 FULLY INSTALLED INCLUDING
 ALL BRICKWORK AND VAT

£7250

ALL OTHER DESIGNS AND SIZES AVAILABLE
 UNBEATABLE PRICES
 PHONE NICK ALLINGTON ON
 (01832) 734070
WWW.CONSERVATORIESBUILT.CO.UK

Jon Spencer
Technical Drawing
Services

Plans drawn for planning and building regulation applications
01933 316044

HOME SERVICES

DC Heating
 SAFE IN OUR HANDS

THE LOCAL PROFESSIONAL HEATING ENGINEERS YOU CAN TRUST

REPAIRS • SERVICING
 INSTALLATIONS

WARM AIR INSTALLATION, SERVICING & REPAIR

Phone today for a free quotation on
T: 01933 392719 • M: 07909 232107
www.dcheatingengineers.co.uk
 MC Heating Services Ltd Trading as DC Heating

Plumber — local & fast!

RGJ PLUMBING AND HEATING

Plumbing

- Full bathroom installation (inc carpentry & tiling)
- Burst pipes & leaks
- Toilet repair/replace
- Taps, sinks repair/replace
- Showers repair/replace & pumps

Heating

- Full central heating installation
- Boiler servicing/breakdowns
- Landlord safety certificates
- Power flushing
- Radiators & valves
- Pumps & cylinders

No call-out charge!
 City & Guilds Qualified
 All work guaranteed

rgjplumbing@outlook.com
01933 588005 or 07921 469471

PGR
 Plumbing & Heating
 Tel: 01933 698116

Email: pgrplumbing@btinternet.com
 Web: www.pgrplumbing.co.uk

Specialists in
 Gas Installations

Gas Servicing & Maintenance
 Landlords Gas Safety Certificates

Central Heating Powerflushing
 Household Plumbing & Drainage

ENSIGN GAS ENGINEERS

We are a FAMILY-RUN LOCAL COMPANY offering installation, service and repair of gas cookers, hobs and pipework

NO CALL OUT CHARGE

Tel: 01933 318327

Rose Clearance Service

Specialists in probate clearances
 Full or part clearance
 Domestic or commercial
 Est 30 yrs

www.rose-clearance-services.co.uk
 Tel: Clive Spencer 07761248266

PUBLIC NOTICES

NORTH NORTHAMPTONSHIRE COUNCIL

ROAD TRAFFIC REGULATION ACT 1984
 (EAST NORTHANTS) (ELECTRIC VEHICLE PARKING PLACES) ORDER 2022
 (FORMERLY KNOWN AS THE (EAST NORTHAMPTONSHIRE DISTRICT)
 (ELECTRIC VEHICLE PARKING PLACES) ORDER 2020)

NOTICE IS HEREBY GIVEN that North Northamptonshire Council has made the above Order under Sections 1 to 5, 32, 35 to 39 and 45 to 55 and Part IV of Schedule 9 of the Road Traffic Regulation Act 1984 ("the Act") and all other enabling powers. The effect of the Order is to designate parking places restricting use at all times for electric vehicles only i.e. solely battery powered or hybrid – connected to and using charging equipment located adjacent to the parking place on the highway and as specified in the Schedule below.

A COPY of the Order may be inspected at Northamptonshire Highways, Brixworth Depot, Old Harborough Road, Brixworth, Northants, NN6 9BX at a time and date specified by appointment only by calling 01604 883445. A copy of the Order can also be obtained on request by emailing pgill@kierwsp.co.uk

If you wish to question the validity of the Order or of any provisions contained in it on the grounds that it is not within the powers conferred by the Road Traffic Regulation Act 1984, or on the grounds that any requirement of that Act, or of any instrument made under it has not been complied with in relation to the Order, you may, within six weeks from the date of this Notice apply to the High Court for this purpose.

The Order will become effective on 18th April 2022.

Dated this 16th day of April 2022

DEBBIE CARTER-HUGHES,

Executive Director, Pathfinder Legal Services Ltd

P/1857

SCHEDULE 1

VEHICLE RECHARGING ONLY PARKING PLACES '8AM - 6PM

4 HOURS NO RETURN WITHIN 1 HOUR' AND 'ELECTRIC VEHICLE RECHARGING ONLY AT ALL OTHER TIMES'

Road Name	Location
Highfield Road, Thrapston	West side, adjacent to No. 132
Newman Street, Higham Ferrers	East side, near No. 14 for 11 metres
York Road, Rushden	Southeast side, opposite the Baptist Church for 11 metres

NORTH NORTHAMPTONSHIRE COUNCIL

ROAD TRAFFIC REGULATION ACT 1984 – SECTION 14
 (VARIOUS ROADS, WOODFORD, GREAT ADDINGTON, RINGSTEAD,
 DENFORD, THRAPSTON & ISLIP)

(TEMPORARY PROHIBITION OF THROUGH TRAFFIC) ORDER 2022

NOTICE IS HEREBY GIVEN that North Northamptonshire Council intend, not less than seven days from the date of this Notice, to make an Order the effect of which will be to prohibit traffic from proceeding along that length of Thrapston Road, Woodford as set out below.

LENGTH OF ROAD TO WHICH RESTRICTION APPLIES: That length of Thrapston Road, Woodford from the junction with Alledge Drive to the junction with Kettering Road, Islip.

REASON FOR RESTRICTION: The restriction is required for safety during new water connection.

PERIOD OF CLOSURE: The proposed Order will come into effect on 3rd May 2022 and will continue in force for a period of eighteen months. An application may be made for the approval of the Secretary of State for Transport for the Order to be extended if this proves necessary. However, the restriction specified will have effect only at such times and to such an extent as is indicated by the display of signs prescribed by the Traffic Signs Regulations and General Directions 2016.

EXPECTED DURATION: It is expected that the road will be restricted until 5th May 2022.

ALTERNATIVE ROUTES: use Thrapston Road, High Street, Addington Road, Woodford; Woodford Road, Main Street and Ringstead Road, Great Addington; Addington Road, Station Road, Church Street and Denford Road, Ringstead; Ringstead Road, High Street, Thrapston Road and Midland Road, Denford; Midland Road and Bridge Street, Thrapston; Kettering Road, Islip.

If you require any further information please contact Gary Thorp ref:- 21/22 – N535 on 01604 651072. PKG/T22/190

ROAD TRAFFIC REGULATION ACT 1984 – SECTION 14

(COTTERSTOCK ROAD, GLAPTHORN)

(TEMPORARY PROHIBITION OF THROUGH TRAFFIC) ORDER 2022

NOTICE IS HEREBY GIVEN that North Northamptonshire Council have made an Order the effect of which is to prohibit traffic from proceeding along that length of Cotterstock Road, Glapthorn as set out below.

LENGTH OF ROAD TO WHICH RESTRICTION APPLIES: That length of Cotterstock Road, Glapthorn from Glapthorn Road to Cotterstock Road.

REASON FOR RESTRICTION: The restriction is required for safety due to a collapsed road.

PERIOD OF CLOSURE: The proposed Order will come into effect on 18th April 2022 and will continue in force for a period of eighteen months. An application may be made for the approval of the Secretary of State for Transport for the Order to be extended if this proves necessary. However, the restriction specified will have effect only at such times and to such an extent as is indicated by the display of signs prescribed by the Traffic Signs Regulations and General Directions 2016.

EXPECTED DURATION: It is expected that the road will be restricted for 18 months.

ALTERNATIVE ROUTES: use Glapthorn Road and Cotterstock Road.

If you require any further information please contact Gary Thorp ref:- 21/22 – N573 on 01604 651072. PKG/T22/255

Dated this 16th day of April 2022

DEBBIE CARTER-HUGHES,

Executive Director, Pathfinder Legal Services Ltd

KM
 KM Media & Marketing

To advertise in
 Nene Valley News call
01522 692542

Tandee Nursery

BUY DIRECT FROM THE GROWER

Professional landscaping service available

Over 60,000 quality plants in stock

Save up to 50% on garden centre prices

Barnwell Road | Thurning
 Peterborough | PE8 5RH
Tel: 01832 293 755
www.tandeenursery.co.uk

Open 7 days a week:
 9am to 5pm BST, 9am to 4pm BWT,
 Sunday: 9am to 4pm

DOWNLOAD THE 'DISCOVERNN' APP AND START EXPLORING

From culture, green spaces, theme parks and water activities to shopping, local eateries, health, beauty and business services, what's the best way to discover all that's happening across North Northamptonshire?

DiscoverNN is the answer, a brand-new mobile app launched by North Northamptonshire Council, powered by technology provider buhtown and funded by the Government's Welcome Back Fund, awarded to local

authorities across the country last year during the Covid-19 pandemic.

With the key aim of supporting local businesses and encouraging people to shop local, DiscoverNN features offers and tailor-made promotions for

customers, geo-targeted events and activities, and is free to download.

The app is simple to use and available now for local residents and visitors to the area to help them see what's on, find shopping opportunities, plan

days out, make reservations, buy products, book services, plus much more!

Councillor Helen Howell, Deputy Leader of North Northamptonshire Council and Executive Member for Sport, Leisure, Culture and Tourism said: "We are really excited to be launching DiscoverNN, especially in the spring when the weather is improving, school holidays are approaching and people are making plans to get out and about to explore. It is a great way to bring everything together in one place, making it easy for people to discover North Northamptonshire from the palm of their hand.

"There is a wonderful range of tourist attractions in the area which are featured on the app and website including the Chester House Estate, Wicksteed Park, and our beautiful country parks, to name a few.

"DiscoverNN is for everyone, and we hope that residents and visitors will download the app and start using it to explore places they've never been to before to discover everything North Northamptonshire has to offer, which includes some real hidden treasures!"

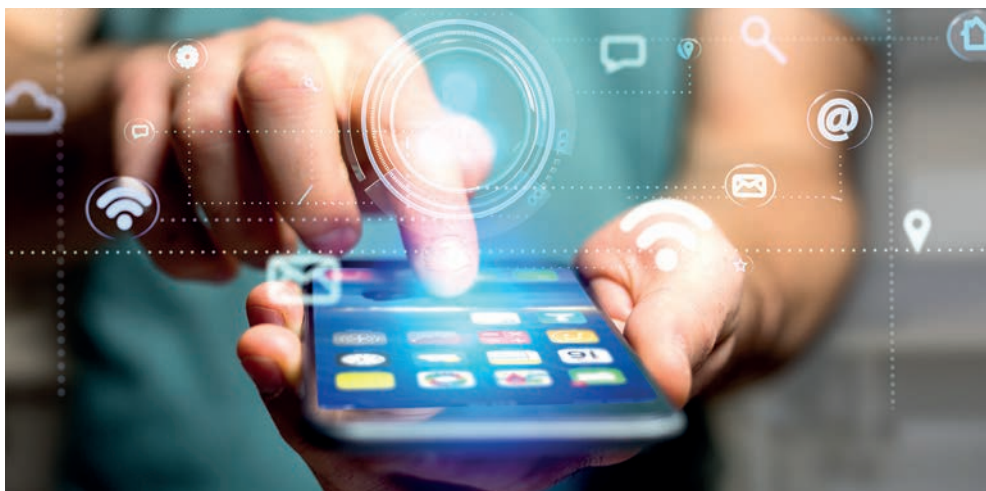
Councillor Jason Smithers, Leader of North Northamptonshire Council said: "Covid-19 has hit businesses hard, and the launch of DiscoverNN is just one of the ways we are supporting them to take steps forward, especially now everyday life is returning to

how it was before the pandemic.

"We are working closely with a wide range of local businesses across the whole area to help them join this exciting new digital platform at no cost to them, so they can start promoting their offers and services directly to new and existing customers.

"We have over 60 businesses on board so far and anticipate that this will continue to grow as more and more people hear about and start using DiscoverNN. We are proud of this app and are looking forward to seeing it build!"

DiscoverNN is available now on iPhone and Android app stores, people can search 'DiscoverNN' on their preferred store, or visit the website at www.northnorthants.gov.uk/discovernn to use the direct download links.



There's still time for local businesses to sign up to be part of DiscoverNN. It's simple, quick and free to join, and there's support available. Businesses are invited to visit <https://join.discovernn.co.uk> to get signed up.







RESIDENTIAL & COMMERCIAL WASTE COLLECTION

Brindley Close, Rushden,
Northamptonshire NN10 6EN

Call us today!
01933 315872

For more information visit:
www.intercountyltd.co.uk

SINGLE BULKY ITEMS OR FULL HOUSE CLEARANCES

If you have any cardboard, paper, furniture, electrical waste, pallets, garden waste etc please give us a call for a very competitive price!

We can normally clear the waste in 72 hours from the point of order, but we also provide an emergency service, so please give us a call should you have a requirement!

- Fully Licensed
- Single Bulky Items
- Diverted from Landfill
- Full house clearances
- WEEE Waste
- Residential & Commercial Services
- Reliable & Friendly Staff

OUR SERVICES:

- Declutter Service
- COVID-19 Fogging
- Property Clearance
- Carpet Cleaning
- Garden Clearance
- Void Property Cleaning
- Loft Clearance
- Wheelie Bin Cleaning
- Office Clearance
- Hazardous Waste Removal
- Sharps Removal
- WEEE Electrical Waste
- Window Cleaning
- Graffiti Removal
- Extreme Cleaning
- Skip & Grab Hire
- Biohazard Cleaning
- Confidential Shredding
- End of Tenancy Cleaning
- Jet Washing Service
- Decontamination Cleaning
- Touch Point Cleaning



BIN CLEANING from £3.50