

Nene Valley news

YOUR LOCAL INDEPENDENT COMMUNITY NEWSPAPER FOR EAST NORTHAMPTONSHIRE

Telephone:
01522 692542

We want to hear from you,
so please submit your
news story or event at
www.nenevalleynews.co.uk

INSIDE
this issue



**12 DAYS OF LOCAL
CHRISTMAS SHOPPING:
SUPPORT LOCAL BUSINESSES
THIS FESTIVE SEASON**

PAGE 03



**EQUALITY CELEBRATED AT
PRINCE WILLIAM SCHOOL
WITH INTERNATIONAL
ACCOLADE**

PAGE 09

NEWS IN BRIEF

Visit country parks... virtually

A new project from North Northamptonshire Council, using funding from Public Health, will help make green spaces across the local area more accessible.

The Country Parks and Woodlands team have just taken delivery of new virtual reality headsets which show footage filmed over the last year, throughout the seasons, in five country parks across North Northamptonshire and Corby woodlands.

From the morning mist and sunrise at Sywell Country Park, to strolling through the woods in Corby, users will be able to virtually experience all aspects of the council's five country parks - Barnwell Country Park, East Carlton Countryside Park, Fermyn Woods Country Park, Irchester Country Park and Sywell Country Park, alongside the ancient woodlands in Corby.

Using the footage and the new headsets, the team will now work with community groups to hopefully increase participation and confidence to visit any green space. The team also plan to work with groups who may be unable to visit the parks.

More information about country parks across North Northamptonshire is available on the council's website.

Escape the Christmas stress and find peace in the nation's forests

Step away from the whirl of present shopping, wrapping gifts, preparing food, decorating your home and the busy rush of Christmas with some self-care in Forestry England's Fineshade Wood this festive season. Much as we may love the chance to connect and celebrate with loved ones, Christmas can leave us tired and feeling overwhelmed.

Fineshade Wood offers the perfect escape, whether it's for a solo winter walk among the trees, an activity to connect with others or to restore wellbeing. Time among trees delivers powerful health benefits, from lowering blood pressure to boosting your immune system. This Christmas, give yourself the gift of forest time. Here's how you can explore the wonderful wellbeing activities on offer:

- **A winter wellbeing walk** - Winter in the forest is a magical time. Life slows down and without the

leaves rustling in the wind, the forest falls quiet. Leave the headphones at home and tune in to the sights and sounds all around you on a forest wander on one of the waymarked walking trails.

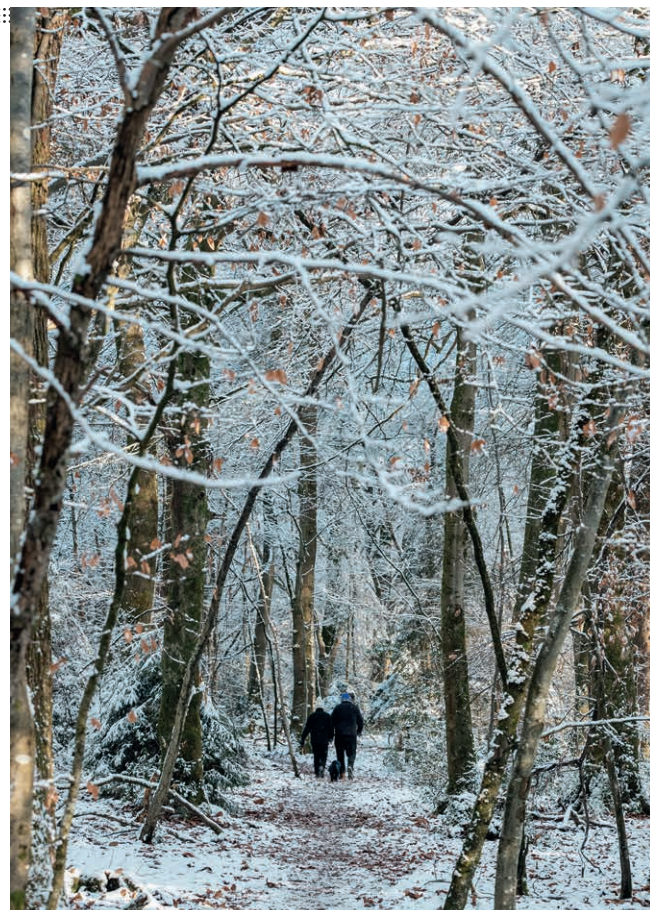
• **Winter forest bathing**

- The hushed quiet of a winter woodland is the perfect time of year for forest bathing - the Japanese practice of relaxing in the forest. Known in Japan as shinrin yoku, being calm and quiet amongst the trees, observing nature around you whilst breathing deeply

can help boost health and wellbeing naturally. Read Forestry England's guide to start forest bathing and try forest bathing on your own in Fineshade Wood.

- **Wellbeing trail** - This self-led trail winds through the trees and encourages you to pause, unplug and mindfully reconnect with nature as you walk. These sensitively designed trails have themed panels, and the beautiful silhouettes of bare-branched trees make a peaceful woodland backdrop for a mindful walk.

Continued on page 02



SHOWROOMS: 69-71 WASHBROOK RD • RUSHDEN • NORTHANTS NN10 6UR action2mobility.co.uk



Wet rooms
and easy access
bathrooms
supplied
and fitted

Action²Mobility
THE REGION'S LEADING MOBILITY AID CENTRE

Phone us for
delivery if you're
shielding*

Simply make your choice and
phone through your order to
0800 698 2588

*Limited to 25 miles radius from our
showrooms in Rushden

CALL FREE: 0800 698 2588

MON-FRI 8am-4.30pm

FREE PARKING

Stockist of Cosyfeet and Sandpiper shoes

STAIRLIFTS: FULLY GUARANTEED, FREE HOME SURVEY

Continued from page 01

• **Winter wildlife walks** - Winter months are an excellent time to get to know mammals in the forest. You may not meet an animal face to face, but you can read the tracks and signs they leave behind.

Prints in the mud or snow can show the journeys animals in the forest have made before you. You can quickly learn the difference between fox, badger and deer prints.

You can also enjoy a bit of tree identification on your walk. Broadleaved trees become ghosts of the forest in winter, leaving their skeletons on show. Each species is built differently, with the silhouette of oak being round and stocky with low branches, and birch standing tall and slender with trailing branches.

• **Low-cost family get-together** - Wrap the kids up warm, pull on your boots and fill the flask. The forest is a perfect natural playground. Let the kids run wild and burn off that excitement for Santa with a family or friends forest get-together.

Car parking charges apply when you visit the nation's forests. Forestry England membership offers free parking where charges apply and is a wonderful way to explore hundreds of forests across England while supporting Forestry England's work caring for these beautiful places.



GENEALOGY JOTTINGS

WORDS BY
JAN PEARSON

Where do you do your research? Do you have a dedicated area or do you set things up on the kitchen table when everyone else is busy elsewhere? If you live alone in a large, clutter-free house with plenty of space, then there are many family historians who envy you! I am lucky in that I have a spare room in which I have set up my "office". However, there are many of us who live in houses with multiple functions where you have to vie for space with partners, children, ironing, piles of junk and pet animals.

The key is to be organised. The very minimum is to be able to have a large enough surface on which you can work with open folders, plus spread out documents and family trees. You should also have a bookshelf or cupboard in which to store everything. But do make sure that your work is easily accessible. There is nothing worse than having to make a foray into the loft whenever you need to check something, or clamber over the Hoover or Christmas decorations in order to get to it. Talking of which, the compliments of the season to you all!

Having your computer close to your documents and notebooks is also very handy.

But, not everyone has a computer at home and could be using one elsewhere, such as in the Library. Now, I would not suggest that you tote all of your family history with you when you visit, but just take with you what you need. Start making a list of what you are taking a couple of days before you visit – it could well change as you think of something else.

I remember visiting the Essex Archives in Colchester on one occasion. To my horror, I realised that I had forgotten the notes on one branch of my family and so my visit was much shorter than anticipated as I had to work from memory. A 140-mile round trip was nearly wasted!



Genealogy Specialists, Tracing Our Past, Discovering Our Genes (TOP DOG)
www.genealogy-specialists.com

Library roof replacement project moves into next phase

Planning permission and listed building consent have been granted to replace the Grade 2 listed library and art gallery roof on Cornerstone in Kettering.

Whilst the applications have been going through the planning process, North Northamptonshire Council has also been going through a full tender process for the works through the Gov.uk contract finder.

Now that permissions have been granted, approval is being sought from Natural England to confirm that the bat protection measures are appropriate.

A contractor is expected to be appointed in early 2025 and physical work will be able to begin on site, using the Collyweston slate that has been agreed (following discussions with conservation experts and advice from Historic England).

As well as the launch of a new website, a video on the project was recently published which takes viewers behind the scenes, including a look at the slate mining process and interviews with members of the team.

Cllr Helen Howell, the council's Deputy Leader and Executive Member for Sport, Leisure, Culture and Tourism, said: "This is a huge milestone for the roof replacement project, now we have the correct planning permission

in place, which met the qualifying criteria to be granted under the Council's scheme of delegation. This means that once a contractor has been appointed through a thorough and compliant tender process, physical work can start on site as soon as possible. With the contractor appointed, we will work with them to produce a full timeline for the works and residents can be assured that that timeline will be published, once it is agreed.

"In the meantime, we remain committed to being as transparent as possible and, as I have said previously, we are going through a full procurement exercise to ensure that the most suitable contractor completes the work for well within the budget we have set aside - a budget which is very much a worst-case scenario and includes a 20% contingency."

Due to the works and scaffolding that will be required internally to ensure the safety of all concerned, the library services will continue to be temporarily relocated into the upper floor of the modern extension of Cornerstone for the foreseeable future. The library team are offering a full range of services and group activities, whilst the Cornerstone team are continuing to run a range of outreach activities across Kettering with details and information available on the Cornerstone website and social media channels.

The planning decision notices for the works can be found on the council's planning portal under application numbers NK/2024/0376 and NK/2024/0377.

PURPLE MONDAY

20% off Wills in February.*

Make this the year you make (or update) your Will.

"Purple Monday" is our annual drive to encourage people to have a professionally-drafted Will, to ensure that your wishes are carried out. This could include your assets, guardianship of your children and any specific gifts you wish to make.

It can also help to reduce your dependants' liability for Inheritance Tax. If you need to update your Will ask about our free Will health check.

*Appointments must be booked on Monday 3 February 2025 for an appointment within 28 days. Other terms apply – see wilsonbrowne.co.uk/terms or call for details.

Quote PM1 when calling.
wilsonbrowne.co.uk
0800 088 6004



wilson browne
SOLICITORS

Want to place an advertisement or submit an article?

If you wish to contribute or have any comments please email news@nenevalleynews.co.uk or call 01522 692542. To advertise, call 01522 692542. Alternatively you can email advertising@nenevalleynews.co.uk

If you are not receiving your copy of Nene Valley News, please email distribution@km-media.co.uk or telephone 01522 692542.

If you would like to receive this publication as a download, Nene Valley News is available online as a pdf at nenevalleynews.co.uk.

You can also subscribe to Nene Valley News for £1.50 per issue.

Nene Valley News is produced by KM Media & Marketing, County House, 9 Checkpoint Court, Sadler Road, Lincoln LN6 3PW.

Copy dates for Nene Valley News

Publication date: Saturday 18th January
Articles to the editor by: Wednesday 8th January

Publication date: Saturday 1st February
Articles to the editor by: Wednesday 22nd January

km
KM Media & Marketing
Your partner in publishing

12 Days of Local Christmas Shopping: support local businesses this festive season

Rushden Town Council celebrates local traders with a festive twist on the '12 Days of Christmas'

This Christmas, Rushden has brought festive cheer to the community with the 12 Days of Christmas Shopping Showcase. Since 11th December, Rushden Town Council has

showcased 12 local businesses, spotlighting their festive offerings on social media.

Each day, a different local trader has been featured in the spirit of the classic "12 Days of

Christmas" rhyme. The campaign kicked off with T. E. Brown Butchers and has continued daily, introducing a new local business and their distinctive products.

To add a creative touch to the campaign, Rushden Town Council has presented each business's offerings in the form of a playful short poem inspired by the famous Christmas carol.

> A DAILY CELEBRATION OF LOCAL TALENT

In addition to the poetic spotlight, each post has been accompanied by vivid graphics and eye-catching photos, bringing the products to life.

> T. E. BROWN BUTCHERS TAKES CENTRE STAGE

The campaign's first

spotlight shone on T. E. Brown Butchers, a cherished name in the community known for its high-quality meats and holiday specialties.

> WHY SHOP LOCAL THIS CHRISTMAS?

Supporting local businesses strengthens the community,

promotes sustainability, and ensures that shoppers discover one-of-a-kind gifts and products that large retailers simply can't match. By shopping locally this Christmas, customers can give back to their community while enjoying a richer, more personal shopping experience.



For more information about the "12 Days of Local Christmas Shopping" campaign, visit www.rushdentowncouncil.gov.uk

Visit our magical Christmas displays. Our Singing Reindeer are back again!

www.bosworthsgc.co.uk

Santa's Grotto

Book online now - scan the QR code

Scan QR code

Real Christmas Trees in stock from the end of November. (Delivery available)

RB Travel
01536 791066

DECEMBER
Sat 28 Skegness

JANUARY
Fri 3 London's Christmas Lights & Fish n Chips
Sat 4 Boundary Mills, Grantham
Sun 5 Birmingham January Sales & Primark
Wed 15 Seasonal Surprise
Sat 18 Strictly Come Dancing

FEBRUARY
Sat 1 York's Ice Trail - free event in the town
Wed 5 St Albans Market Day
Sat 8 Warwick & Leamington Spa
Sun 9 Birmingham International Tattoo
Wed 12 Boston Market & Baytree Garden Centre
Sat 15 Houses of Parliament
Sat 15 London Museums OR Free Time
Tue 18 Melton Mowbray
Wed 19 Seasonal Mystery Tour
Thu 20 Ely
Fri 21 Cotswold Farm Park - Adam Henson
Sun 23 Orchids at Kew Gardens
Tue 25 Barnsdale Gardens Snow Drops

MARCH
Tue 4 Springfield
Tue 4 Spalding
Thu 6 Cotswold Tour
Sat 8 York OR Jorvik Viking Centre
Sat 8 National Railway Museum
Tue 11 Derbyshire & Peak District
Sat 15 Saffron Walden a Cosmopolitan Market
Wed 19 Seasonal Mystery
Fri 21 Ideal Home Show
Fri 21 Royal Mews & Free Time
Sat 22 Thriplow Daffodil & Country Fair
Tue 27 Canterbury OR Canterbury Cathedral
Fri 28 Stratford Upon Avon
Sat 29 Hever Castle & Gardens - Anne Boleyn

MAY
Sat 10 Andre Rieu

SEP
Thu 4 Riverdance Show

Check out our website for further days out
www.rbtravel.co.uk

FEBRUARY
10-14 FEBRUARY 2025 SEASIDE MYSTERY - £359.00pp
Half Board including Excursions, £359pp. On the way to our chosen hotel we stop usually for morning refreshments and somewhere for lunch and arrive at our 'mystery' hotel in plenty of time before dinner. On the 2 - 4 day, after a leisurely breakfast and usually much discussion about what the day might have in store, we depart for a full day excursion. On the final day, we make our way home via another place of interest. A different experience every time.

MARCH
9-12 MARCH 2025 FLOATING ON THE RIVER SEINE IN PARIS - UPPER DECK £609PP/MAIN DECK £599.00pp
Full Board including Excursions. The MS Renoir floating hotel is a premier ship that sails on the Seine, a historic and authentic river with breathtaking views. On the deck there are comfortable sun lounges and a large shaded area. Paris is one of the world's great cities with attractions such as the Eiffel Tower, Notre Dame and the Louvre to name just a few. Paris is also famous for its rich history, beautiful architecture and cultural diversity. Entertainment includes a Cabaret Show on one night and dancing on another.

10-14 MARCH POTTERS FIVE LAKES ALL INCLUSIVE MID WEEK BREAK £579.00pp
The fantastic Potters Five Lakes resort is the UK's newest all inclusive resort that is packed with countryside charm and character. Their award-winning resort combines peaceful countryside surroundings, exclusive activities and amazing all inclusive value. Come and experience their second five-star destination for a break you won't forget. Set in 320 acres of glorious Essex countryside, it is the perfect place to unwind. There is an excellent variety of activities, first class West End quality entertainment, delicious food & drink and everything is included in the price!

23-27 MARCH A TOUCH OF CLASS £659.00pp
The Belmont Hotel, Half Board including Excursions. Sidmouth sits in the middle of East Devon and is an Area of Outstanding Natural Beauty. It is surrounded by spectacular scenery and vistas. The landscape is a wonderful mix of wooded areas, heathland and hilltops. Along the front in Sidmouth is the Millennium Walkway which stretches the length of the beach providing the perfect background for an afternoon stroll. Take some time to explore the town centre, rich in royal and architectural history, as well as discovering a great range of shops, cafe's and restaurants.

CALL NOW ON 01536 791066 TO GET OUR FREE BROCHURE!
taurus@rbtravel.co.uk
www.taurusholidays.co.uk

Vital services protected as North Northants budget tackles the challenges of a tough economic climate and increasing demand for services

Protecting and investing in our local frontline services against a backdrop of continued national financial uncertainty is the focus of North Northamptonshire Council's budget proposals for the next financial year (2025/2026).



A report at Executive on 19th December proposed a balanced revenue budget for 2025/2026 as well as outlining the medium-term financial plan for the following three years.

The proposed net revenue budget for 2025/2026 is £400.93 million, excluding the Dedicated Schools Grant. This money provides a range of services to residents and businesses across the area including care to vulnerable adults and children, education, the disposal and collection of waste, highways maintenance, economic development, housing and support for those that are homeless.

A commitment to maintain vital service provision has seen the Council invest an additional £51.9 million into services, including £29.2 million into adult social care and £6.2 million into children's services

to protect the most vulnerable in our communities and address growing demand for these vital services.

These pressures are, in part, offset by savings, efficiencies and further income of £26.3 million. Taken together with an improvement in funding expected from business rates, Council Tax and government grants, the Council has been able to set a balanced budget for 2025/2026.

Council fees and charges have been reviewed for 2025-2026 and set in accordance with the Council's constitution.

The Council will also be proposing a programme of capital investment totalling £180.4m over the four-year period 2025-2029 across a number of schemes including investing over £43.6m into highways, £36.6m for continued investment into our Housing Stock, £27.9m for

investment into schools, £8.1m to support facilities for those with disabilities, £8.2m in improving digital infrastructure and £2.6m for Electrical Vehicle infrastructure.

Cllr Lloyd Bunday, the Council's Executive Member for Finance and Transformation, said: "I'm proud to be presenting Executive with a balanced budget which maintains service provision for the residents of North Northamptonshire, which is quite an achievement in the current economic climate."

"I'd like to thank all of those who have been involved in bringing this report and medium-term plan forward and for building the financial stability required so we can operate efficiently and effectively."

Jason Smithers, Leader of the Council, said: "The financial challenges of recent years

continue to persist against an ongoing background of global economic uncertainty. What we're presenting to Executive is a prudent budget for the next financial year which represents financial stability for the residents of North Northamptonshire."

"I'm delighted that we're able to present a balanced budget with no service cuts."

"The budget is not just about how to manage within available resources but also where funding should be invested. There is a balance to be maintained between encouraging growth, providing high quality universal services and protecting those that are the most vulnerable."

Council Tax

Government has permitted local authorities such as North Northamptonshire Council to increase the Council Tax rate



The Hawthorns
NORTHAMPTON

MOMENTS THAT MATTER

Enjoy a worry-free and active retirement at the Hawthorns, where community living is at our heart.

The Hawthorns' Well-being Co-ordinators provide a daily programme of stimulating and engaging activities, social events, trips out, exercise classes and interest clubs to keep your mind and body active and support you in staying healthy.

Studio, 1-bed or 2-bed apartments available for single occupancy or couples.

01604 358133 | hawthornsretirement.co.uk

by 4.99%, including 2% for the adult social care precept, in recognition of the difficult financial climate.

The authority is proposing an increase allowed by Government in council tax of 4.99%.

This increase would contribute around an additional £11m per year towards inflationary and demand led pressures, to enable services to be maintained and would represent a Band D level of Council Tax for North Northamptonshire Council of £1,827.06 for 2025/2026. This means that North Northamptonshire Council's Council Tax rate will be in the lower third for unitary councils.

This is an annual increase of £86.84 (equivalent to £1.67 per week) from the Band D Council Tax level set in 2024/2025.

Increasing Council Tax has the advantage of providing stable funding for the future, helping to further protect services, and will provide the Council with a degree of certainty around funding. This is important as there will be a review of how government grants are distributed from 2026/2027.

This Band D figure does not include the Council Tax for individual Town and Parish Councils or the Council Tax set for Fire and Police by the Northamptonshire Police, Fire and Crime Commissioner.

There is no change to the Local Council Tax Support Scheme, which will continue at 25%.

Housing Revenue Account

The Housing Revenue Account (HRA) is a separate ring-fenced account within the Council for the income and expenditure associated with its housing stock.

The HRA does not directly impact on the Council's wider general fund budget or on

the level of council tax. Income to the HRA is primarily received through the rents and other charges paid by tenants and leaseholders.

This year's Draft Budget for the HRA is in a balanced position while crucially the medium-term is also showing a balanced position.

There is also a proposed rent increase of 2.7% for the next financial year, which accords with the Government's rent setting policy for 2025/2026. Any funding received by the HRA is retained within the HRA and will be used to support investment into the Council's housing stock through improvements and maintenance.

Dedicated Schools Grant

The Dedicated Schools Grant (DSG) is a ring-fenced grant from Government to support education-related services.

The allocation is driven by a number of factors, but predominantly relates to pupil numbers. For 2025/2026 the indicative settlement is £414.5m covering the schools block, high needs block, early years block and the central schools' services block.

Councils across the country are generally seeing significant pressures within services funded through the high needs block, which supports children and young people with special educational needs and disabilities from 0 to under 25 years of age.

Next steps

Once approved, a consultation on the proposals will start, running until midnight on 24th January 2025.

The Executive will then meet on 6th February, to consider final budget proposals for recommendation to Full Council on 20th February 2025.

MAJOR MILESTONE REACHED
FOR MULTI-MILLION-POUND
ISHAM BYPASS SCHEME

Plans to build a dual carriageway bypass for the village of Isham have taken an important step forward.

North Northamptonshire Council has now submitted an Outline Business Case (OBC) to the Department for Transport.

Submitting an OBC is a routine stage for a major highways scheme and is done so the Government can check the project is still financially viable.

The submission also seeks funding of £4.346m which will be matched by £2.172m from the Council to give a total of £6.518m to get the scheme to the stage where it is ready to start construction.

This covers the detailed scheme design, progressing land purchase negotiations and compulsory purchase procedures as well as seeking tenders to build the road.

Late last year, the previous Government announced that it would fully fund the build costs of the 3.75km road, which will not only alleviate congestion in Isham but also help unlock economic growth in the area.

The next stage would be to submit a Full Business Case to Government for the £116 million required to build the road.

Subject to planning permission – expected to go to committee early in 2025 – construction is currently programmed to start in April 2027 with

the scheme opening in March 2029.

The Isham Bypass forms the first part of a strategy to dual the whole A509 between the A14 south of Kettering and the A45 at Wellingborough.

Cllr Matt Binley, the Council's Executive Member for Highways, Travel and Assets said: "Submitting an Outline Business Case is an important milestone to reach for this project and I'm delighted to announce that we've made our submission to Government.

"This scheme has been wanted by local residents for a very long time and we're determined to make this a reality for them.

"The project has so many benefits, not just for the local residents but more widely in unlocking the potential for growth and the associated economic spin-offs from that."

Jason Smithers, Leader of the Council said: "In my previous role as lead Member for Highways at the former county council, this was a key project for me and one I was determined to move forward.

"I'm thrilled to see it reach this stage - this project is one of our major priorities as a council and I'm determined that we see it through to completion."

OUNDL CARPETS
& FLOORING

3 stores all in one place:
OUNDL

THE WINTER SALE

STARTS WEDNESDAY 1ST JANUARY 2025

FANTASTIC REDUCTIONS ON ALL OUR
RANGES OF CARPETS & LVT

OVER 100 ROLL ENDS OF CARPET UP
TO 70% OFF NORMAL PRICE

2m x 5m Wool Twist Heavy Domestic
Was £150.00 **NOW £75.00**

3.2m x 4m Wool Axminster Extra Heavy Domestic
Was £256.00 **NOW £129.00**

4.25m x 4.35m Wool Twist Heavy Domestic
Was £277.00 **NOW £139.00**

4.15m x 4.60m 100% Wool Rib Heavy Domestic
Was £344.00 **NOW £172.00**

4.65m x 3.90m 100% Wool Rib Heavy Domestic
Was £454.00 **NOW £226.00**

40oz & 50oz Wool Twist

Brockway Carpets in 4 & 5 metre wide
Normal price from £45.00 per sq m **SALE PRICES from £15.00 per m²**

Heavy Domestic Polyprop

Twist Pile 4 metre wide
Normal price £22.00 per sq m **SALE PRICES from £12.00 per m²**

Luxury Vinyl Tiles

All suitable for heavy domestic areas
Normal Price £24.00 per sq m **SALE PRICES from £18.00 per m**

Oundle Carpets & Flooring
01832 275009

Units 4/6 Eastwood Road, Oundle, Peterborough, PE8 4DF

E: sales@oundlecarpets.co.uk
www.oundlecarpets.co.uk

Open: Monday to Friday 8.30am to 5.30pm, Saturday 10am to 4pm

NENE VALLEY NEWS - EVENTS

> SUNDAY 22ND DECEMBER, 10.15AM

Whitefriars Church Carols and Communion

- Whitefriars Primary School, Boughton Drive, Rushden NN10 9HX

Other Whitefriars Events:

Christmas Eve, 4pm: Children's Nativity Service in Whitefriars School Hall

Christmas Day, 10.15am: Christmas Day Celebration in Whitefriars School Hall.

> MONDAY 30TH DECEMBER, 10.30-11.15AM

Crimbo Limbo Magic Show including free balloon model

- Raunds Community Library, High Street, Raunds NN9 6HT. It is a FREE event

but entry tickets need to be obtained from the library to monitor numbers attending. Contact Ann Rooney 07561 073898.

> SUNDAY 5TH JANUARY, 3PM

Christingle Celebration - Whitefriars School Hall.

> FRIDAY 17TH JANUARY, 2-3PM

Dickens of a Genius - Steve Dimmer's one man show talking about the Life of Victorian writer Charles Dickens. £5 per person including refreshments. Raunds Community Library, High Street, Raunds NN9 6HT. Contact 01933 623747.

THE ARTFUL DUCK

60+ Artisan makers & Artists from local & beyond.

Art, Handcrafted, Vintage.
Picture Framing.



Always
something
new to
see.

42 Brook Street, Raunds NN9 6LP

www.theartfulduck.co.uk

Peterborough Choral Society

Invites you to a

Choral Workshop

with

Bradley Smith

Renowned international tenor & inspirational voice coach

www.bradleysmith-tenor.co.uk

**Tips & techniques to make the most of your voice
AND keep it in good shape**

'Bradley is totally inspiring and his enthusiasm is infectious.'

'knows exactly how to bring out the best in any of us using a variety of techniques.'

'explains how to get the best out of our voices, gives us lots of information and makes us laugh.'

At: St Andrew's Church, Netherton
Peterborough PE3 7RF

On: Saturday January 25th 2025
10am – 1.15pm

Cost: £30 includes music & refreshments



See website for booking details: www.peterboroughchoral.com

Charity No. 1006609




furniture centre
stylish home furniture

LIVING & DINING - BEDROOM - BEDS & MATTRESSES - SOFAS & CHAIRS - RUGS & FLOORING - OCCASIONAL



La-Z-Boy recliners.

Living & dining.

Hand made to order sofas and chairs.

Pytchley Lodge Road, Kettering NN15 6JQ
sales@thefurniturecentre.com 01536 414121

Your Health - Christmas Injuries

WORDS BY
CLAIRE SHORT

The festive season is supposed to be filled with joy, but it's a time when many of us push our bodies more than we should. Here are some of the injuries I've helped over the years:

Lifting Christmas trees

- One of the most common issues we osteopaths see is back pain, and it often starts with something as simple as lifting the Christmas tree. The tree doesn't have to be heavy, sometimes the injury is due to the angle you carry it, or the way you lift it. Remember to ask for help if you need it - rather than end up in agony in the build-up to Christmas.

Over-enthusiastic decorating - Getting the decorations up can mean reaching, stretching, and balancing on ladders. This can lead to shoulder strains, neck pain, or even a fall. It's important to get down and move the



ladder so you don't have to reach a long way.

Gift-wrapping agony - For many of us, wrapping presents is possibly one of the best parts of Christmas. And you wouldn't think it could injure you! The problem is that we often wrap things on the floor. Bending over for long periods, or sitting in uncomfortable positions, can quickly trigger lower back and neck pain. A top tip? Set up a comfortable wrapping station on a table instead. Or use an ironing board if you want to stand.

Post-Christmas stiffness
- The days after Christmas

often bring post-party stiffness. Slumping on the couch, overeating, poor posture during the day, they can all aggravate aches and pains. One of the best ways to counter this is to go for that famous Christmas walk. We're incredibly lucky to have the lakes and Irchester Country Park for walks. Make the most of them!

And if you're sore before Christmas starts, make sure you get a massage, physio or osteopathy treatment in so you can enjoy a pain-free Christmas. Have a great Christmas!

Claire Short is a Registered Osteopath and runs The Ashgrove Clinic in Higham Ferrers. Send questions to claire@ashgrovehealth.co.uk

LOW BACK PAIN? NECK PAIN? CURRENT TREATMENTS NOT WORKING?

Do you suffer from...?

- ☐ Herniated or Bulging Discs
- ☐ Degenerative Disc Disease
- ☐ Posterior Facet Syndrome
- ☐ Sciatica
- ☐ Spinal Stenosis
- ☐ Spinal Arthritis
- ☐ Acute or chronic back pain



Find out if you are a candidate for **IDD Therapy®**

A comfortable, non-invasive back pain treatment with success rates reaching 92%.



01933 469043

www.ashgrovehealth.co.uk
reception@ashgrovehealth.co.uk

The Ashgrove Clinic, 11 Market Square,
Higham Ferrers, NN10 8BT



 **Hermitage House**
A Country Court Care Home

Bi-weekly Coffee Mornings

Every other Wednesday 10am - 12noon
*Starting from 15th January 2025

We warmly welcome our local community to enjoy a complimentary selection of teas, coffees, and homemade cakes. It's a perfect opportunity to meet new friends and share good company.

No need to book - just pop in on the day!

To learn more or to reserve a table, please contact Jess, our Customer Relations Manager on 01832 430 084.

Kingfisher Road, Thrapston, Kettering, NN14 4GN

www.countrycourtcare.com



THE REWILDING WINNING WAYS OF HIGHAM FERRERS – AND GOING FOR GOLD PAYS OFF

For six years, The Friends of St Mary's Church in Higham Ferrers have dedicated themselves to improving the habitat for wildlife in the churchyard.

To gain the gold, candidates were assessed against a range of criteria, which were grouped into different aspects related to supporting wildlife in the churchyard.

The groupings were: grassland and meadow plants; trees, shrubs and herbs; management, education and public relations as well as the variety of habitats.

They had to meet all the requirements of the silver award, plus scoring 40 points, including at least five from each section.

"We also had to provide evidence of an ongoing programme of monitoring and recording wildlife. We met all requirements apart from having a water butt, which we cannot install on Grade 1 listed buildings. There are a total of 49 points available and we got 48," explained Carol Fitzgerald, the secretary.

Katherine Banham, a Wildlife Trust conservation officer, who attended the celebration with Lisa Rowley, said there had been "wonderful community involvement" in the churchyard.

There had also been good interpretation of what The Friends had been doing and "letting people know what was happening and why it was happening."

The gold award plaque will now be placed next to the silver award on the gatepost by the WW1 memorial in the churchyard.

Pictures: Robert Barnatt



That really takes the cake: Local resident Alison Wilkinson (daughter of Liz Brown, a trustee of the Friends) did The Friends of St Mary's proud with the special celebration cake

Now their hard work and dedication have paid off with not just one award, but two.

And their efforts went "way beyond" what even the judges of the prestigious regional Wildlife Trust's gold award were expecting.

"They have done an amazing job. The judges were very impressed," said Lisa Rowley, the administrator and conservation officer of the regional Wildlife Trust.

Winning the gold award put The Friends of St Mary's in line for the solid oak trophy for Best Churchyard of the Year – and they clinched that title too.

They will remain the Gold Award winners for three years while the Best Churchyard of the

Year is theirs for 12 months.

The gold award followed the silver award which they won three years ago.

The Friends and everyone who had helped in the churchyard over the years marked their double awards with a special celebration in the churchyard's Bede House, where they enjoyed refreshments and a slice of the special cake.

Brenda Lofthouse, chairperson of The Friends, recalled finding a "magnificent set of criteria" developed by the Wildlife Trust for the Friends to follow to gain the silver award.

"That gave us a schedule to follow and gradually we worked towards the ultimate – the gold," she recalled.



Simply the best: There was a lot to celebrate for The Friends of St Mary's in Higham Ferrers and their guests when they met up in the Bede House in the churchyard. From left to right: Carol Fitzgerald, secretary, Brenda Lofthouse, chairperson, Mayor Vijay Paul, Brian Behagg, treasurer, Lisa Rowley and Katherine Banham of the Bedfordshire Cambridgeshire and Northamptonshire Wildlife Trust

ACCOUNTANCY

Jon Essam & Co Ltd
Chartered Accountants

- Free initial consultation with fixed fee quotation
- Proactive accountancy and tax service for landlords, sole traders, partnerships and limited companies
- Tax planning and advice
- Registered auditor
- Bookkeeping, management accounts and VAT submissions
- Making tax digital (MTD) submissions
- QuickBooks Platinum ProAdvisor, Partner with Xero and Sage
- Payroll, auto enrolment and CIS bureau service

ICAEW CHARTERED ACCOUNTANTS | www.essamca.co.uk | 01832 730280

Email or visit our website to arrange a free consultation
23 Cottingham Way, Thrapston, Kettering, Northants NN14 4PL (behind the fire station)
info@essamca.co.uk | www.essamca.co.uk | 01832 730280

CHRISTMAS GREETINGS

Merry Christmas
From Bosworth's

B

Wishing our customers a
Merry Christmas
and a Happy New Year!

01536 722635 | bosworthsgc.co.uk

PUBLIC NOTICES

NORTH NORTHAMPTONSHIRE COUNCIL

ROAD TRAFFIC REGULATION ACT 1984 – SECTION 14 (CHURCH STREET, STANWICK)
(TEMPORARY PROHIBITION OF THROUGH TRAFFIC) ORDER 2024
NOTICE IS HEREBY GIVEN that North Northamptonshire Council have made an Order the effect of which is to prohibit traffic from proceeding along that length of Church Street, Stanwick as set out below.
LENGTH OF ROAD TO WHICH RESTRICTION APPLIES: That length of Church Street, Stanwick – between no.17 to no.41.
REASON FOR RESTRICTION: The restriction is required for safety during gas connection works.
PERIOD OF CLOSURE: The proposed Order will come into effect on 4th January 2025 and will continue in force for a period of eighteen months. An application may be made for the approval of the Secretary of State for Transport for the Order to be extended if this proves necessary. However, the restriction specified will have effect only at such times and to such an extent as is indicated by the display of signs prescribed by the Traffic Signs Regulations and General Directions 2016.
EXPECTED DURATION: It is expected that the road will be restricted for up to 2 days.
ALTERNATIVE ROUTES: use Raunds Road, Chelveston Road and The Avenue.
If you require any further information please contact Steve Fowler
ref:- 24/25 – N621 Steve.Fowler@northnorthants.gov.uk PKG/T24/745

ROAD TRAFFIC REGULATION ACT 1984 – SECTION 14 (GRAFTON ROAD, BRIGSTOCK)
(TEMPORARY PROHIBITION OF THROUGH TRAFFIC) ORDER 2024
NOTICE IS HEREBY GIVEN that North Northamptonshire Council have made an Order the effect of which is to prohibit traffic from proceeding along that length of Grafton Road, Brigstock as set out below.
LENGTH OF ROAD TO WHICH RESTRICTION APPLIES: That length of Grafton Road, Brigstock by entrance of the sewage works.
REASON FOR RESTRICTION: The restriction is required for safety during new connection works.
PERIOD OF CLOSURE: The proposed Order will come into effect on 14th January 2025 and will continue in force for a period of eighteen months. An application may be made for the approval of the Secretary of State for Transport for the Order to be extended if this proves necessary. However, the restriction specified will have effect only at such times and to such an extent as is indicated by the display of signs prescribed by the Traffic Signs Regulations and General Directions 2016.
EXPECTED DURATION: It is expected that the road will be restricted for up to 3 days.
ALTERNATIVE ROUTES: use A6116, Slipton Road and Brigstock Road.
If you require any further information please contact Steve Fowler
ref:- 24/25 – N642 Steve.Fowler@northnorthants.gov.uk PKG/T24/751

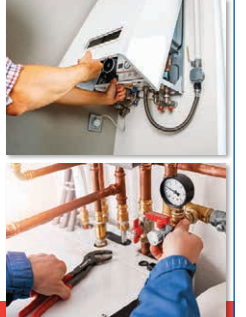
ROAD TRAFFIC REGULATION ACT 1984 – SECTION 14 (HAUTBOY LANE, WARMINGTON)
(TEMPORARY PROHIBITION OF THROUGH TRAFFIC) ORDER 2024
NOTICE IS HEREBY GIVEN that North Northamptonshire Council have made an Order the effect of which is to prohibit traffic from proceeding along that length of Hautboy Lane, Warmington as set out below.
LENGTH OF ROAD TO WHICH RESTRICTION APPLIES: That length of Hautboy Lane, Warmington from junction of Church Lane to junction with Chapel Street.
REASON FOR RESTRICTION: The restriction is required for safety during fibre works.
PERIOD OF CLOSURE: The proposed Order will come into effect on 6th January 2025 and will continue in force for a period of eighteen months. An application may be made for the approval of the Secretary of State for Transport for the Order to be extended if this proves necessary. However, the restriction specified will have effect only at such times and to such an extent as is indicated by the display of signs prescribed by the Traffic Signs Regulations and General Directions 2016.
EXPECTED DURATION: It is expected that the road will be restricted for up to 16 days.
ALTERNATIVE ROUTES: use Chapel Street, Orchard Close and School Lane.
If you require any further information please contact Steve Fowler
ref:- 24/25 – N647 Steve.Fowler@northnorthants.gov.uk PKG/T24/755

HOME IMPROVEMENTS

HILLERY & SONS
(Established 1984)
Property Solutions - we do it ALL.

PLUMBING & HEATING

New Boilers & Servicing
Full Heating Systems
Gas Safe Registered
Landlord Certificates
Inspections
Cylinders • Pumps • Valves
System Flushes
Inhibitors
Showers • Toilets
Basins • Taps



Call HILLERY & SONS
01536 791914
enquiries@mjhillery.com • www.mjhillery.com

FINANCE AVAILABLE

TAURUS
Holidays
r. b. travel

Wishing all of our customers a Happy Christmas and a peaceful New Year.
Looking forward to seeing you all in 2025.

Tel: 01536 791066
www.rbtravel.co.uk



ROAD TRAFFIC REGULATION ACT 1984 – SECTION 14 (CHAPEL LANE & FREEMANS LANE, DENFORD)
(TEMPORARY PROHIBITION OF THROUGH TRAFFIC) ORDER 2024
NOTICE IS HEREBY GIVEN that North Northamptonshire Council have made an Order the effect of which is to prohibit traffic from proceeding along those lengths of Chapel Lane and Freemans Lane, Denford as set out below.
LENGTHS OF ROADS TO WHICH RESTRICTION APPLIES: Chapel Lane – from junction with Spinney Rise to Duck End and Freemans Lane – from junction with High Street to junction with Duck End.
REASON FOR RESTRICTION: The restriction is required for safety during fibre installation works.
PERIOD OF CLOSURE: The proposed Order will come into effect on 6th January 2025 and will continue in force for a period of eighteen months. An application may be made for the approval of the Secretary of State for Transport for the Order to be extended if this proves necessary. However, the restriction specified will have effect only at such times and to such an extent as is indicated by the display of signs prescribed by the Traffic Signs Regulations and General Directions 2016.
EXPECTED DURATION: It is expected that the road will be restricted for up to 10 days.
ALTERNATIVE ROUTES: use Peg's Lane and Freemans Lane.
If you require any further information please contact Steve Fowler
ref:- 24/25 – N650 Steve.Fowler@northnorthants.gov.uk PKG/T24/764

ROAD TRAFFIC REGULATION ACT 1984 – SECTION 14 (SCHOOL LANE & CHURCH LANE, DENFORD)
(TEMPORARY PROHIBITION OF THROUGH TRAFFIC) ORDER 2024
NOTICE IS HEREBY GIVEN that North Northamptonshire Council have made an Order the effect of which is to prohibit traffic from proceeding along those lengths of School Lane and Church Lane, Denford as set out below.
LENGTHS OF ROADS TO WHICH RESTRICTION APPLIES: School Lane – from junction with Ringstead Road to Church Lane and Church Lane – from High Street to School Lane.
REASON FOR RESTRICTION: The restriction is required for safety during ducting for fibre installation.
PERIOD OF CLOSURE: The proposed Order will come into effect on 20th January 2025 and will continue in force for a period of eighteen months. An application may be made for the approval of the Secretary of State for Transport for the Order to be extended if this proves necessary. However, the restriction specified will have effect only at such times and to such an extent as is indicated by the display of signs prescribed by the Traffic Signs Regulations and General Directions 2016.
EXPECTED DURATION: It is expected that the road will be restricted for up to 11 days.
ALTERNATIVE ROUTES: use Ringstead Road.
If you require any further information please contact Steve Fowler
ref:- 24/25 – N651 Steve.Fowler@northnorthants.gov.uk PKG/T24/765

ROAD TRAFFIC REGULATION ACT 1984 – SECTION 14 (MAIN STREET, BULWICK)
(TEMPORARY PROHIBITION OF THROUGH TRAFFIC) ORDER 2024
NOTICE IS HEREBY GIVEN that North Northamptonshire Council have made an Order the effect of which is to prohibit traffic from proceeding along that length of Main Street, Bulwick as set out below.
LENGTH OF ROAD TO WHICH RESTRICTION APPLIES: That length of Main Street, Bulwick from outside Village Stores.
REASON FOR RESTRICTION: The restriction is required for safety during communication pipe repairs.
PERIOD OF CLOSURE: The proposed Order will come into effect on 17th January 2025 and will continue in force for a period of eighteen months. An application may be made for the approval of the Secretary of State for Transport for the Order to be extended if this proves necessary. However, the restriction specified will have effect only at such times and to such an extent as is indicated by the display of signs prescribed by the Traffic Signs Regulations and General Directions 2016.
EXPECTED DURATION: It is expected that the road will be restricted for one day.
ALTERNATIVE ROUTES: use Main Street and A43.
If you require any further information please contact Steve Fowler
ref:- 24/25 – N684 Steve.Fowler@northnorthants.gov.uk PKG/T24/793

Dated this 21st day of December 2024
SANJIT SULL
Director of Law & Governance (Monitoring Officer) (Interim)

Equality celebrated at Prince William School with international accolade

Prince William School in Oundle has been recognised for its commitment to diversity and inclusion with a national charter mark.

The school, part of East Midlands Academy Trust, has been awarded the RACE Charter Mark bronze

award. Developed by SSAT (the Schools, Students and Teachers network) and Fig Tree International,

the Race and Conscious Equality (RACE) Charter Mark is awarded to schools who demonstrate their

commitment to race equality.

Prince William School was praised for its 'strong stand against discrimination and bullying, promoting a fair, supportive, and inclusive environment for all members of the school community'.

To achieve the charter mark, the school completed a comprehensive package of training for governors, senior leaders and middle leaders, and submitted an evaluation detailing its work towards equality so far and an action plan pledging its ongoing commitment to inclusion.

Headteacher Anna Hewes said: "Prince William School is a truly inclusive school and respect is one of our three core values, inspiring our students to be respectful of themselves, each other, staff and the wider community.

"Our school population is diverse, with students and staff reflecting a broad range of nationalities, beliefs and demographics – which is why inclusion and quality is at the core of everything we do.

"I'm thrilled that our commitment to race equality has been recognised with this national accreditation and we are committed to further embedding this ethos throughout the school community."

The school has an action plan to develop its work around race equality further, which will be reviewed by SSAT and Fig Tree International next year.

Angelina Idun, Director of Education at SSAT, said: "I am delighted that Prince William School has been awarded the bronze RACE Charter Mark. Their application and

action plan clearly show a positive ethos and culture which champions and strives for conscious equality and inclusivity throughout the school community.

"We look forward to continuing to work with the school to see their strategic vision fully realised."



Find out why Serve home care is the best in the East Midlands

Treating your loved one like one of our family is just the beginning

8 West Street, Rushden NN10 0RT

Tel: 01933 315555

info@serve.org.uk • www.serve.org.uk

Charity Number: 1043321

